



**Road Traffic**  
Management Corporation

# ROAD TRAFFIC CALENDER REPORT

31 DECEMBER 2011



**transport**

Department:  
Transport  
REPUBLIC OF SOUTH AFRICA



# Index

Section	Topic	Page
<b>1</b>	<b>Executive Summary</b>	<b>8</b>
1.1	Vehicle Population	8
1.2	Driver Population	8
1.3	Fatal Road Traffic Crashes and Fatalities	8
1.4	Measuring Progress towards Achieving Target to Reduce Fatalities by 50% by 2015	9
<b>2</b>	<b>Vehicle Population</b>	<b>12</b>
2.1	Number of Registered Vehicles	12
2.2	Human Population and Mobility	15
2.3	Unroadworthy and Unlicensed Vehicles	20
2.3.1	General	20
2.3.2	Number of Unroadworthy Vehicles	22
2.3.3	Number of Unlicensed Vehicles	25
<b>3</b>	<b>Driver Population</b>	<b>28</b>
3.1	Learner's Licences	28
3.2	Driving Licences Issued and Expired	29
3.3	Professional Driving Permits (PrDPs) Issued and Expired	31
<b>4</b>	<b>Fatal Road Traffic Crashes and Fatalities</b>	<b>33</b>
4.1	Number of Fatal Crashes	33
4.2	Number of Fatalities	36
4.3	Number of Fatalities per Road User Group	39
4.4	Severity of Fatal Crashes	44
4.5	Crash and Fatality Rates and Trends per 10,000 Vehicles	46
4.6	Fatalities per 100,000 Human Population	50
<b>5</b>	<b>Fatalities per Day-Of-Week &amp; Time-Of-Day</b>	<b>52</b>
5.1	Fatal Crashes Per Day Week	52
5.2	Number of crashes per Time of Day	53
5.3	Fatalities per Age Group	54

<b>6</b>	<b>Major Accidents Investigated</b>	<b>55</b>
6.1	Number of Major Accidents Investigated	55
6.2	Crash types	56
6.3	Contributory Factors	56
6.3.1	Human Factors	56
6.3.2	Vehicle Factors	57
6.3.3	Road Factors	58

**Annexures**

A	Vehicle Population per Province(Registered Vehicles)	ii
B-1	Number of Unroadworthy vehicles	iii
B-2	Number of Unlicenced vehicles	iv
B-3	No. of Unroadworthy and Unlicenced Vehicles	v
C-1	Number of Learner's Licences issued	vi
C-2	Number of Driving Licences issued	vii
C-3	Number of PrDPs issued	viii
D	Monthly Number of Fatal Crashes per Province: 2008-2011	ix
E	Monthly Number of Fatalities per Province: 2008-2011	x
F	Number of Road User Group Fatalities per Province	xi

## Preamble

### Data Sources

The Road Traffic Management Corporation (RTMC) as the lead agency on road traffic safety and management, gathers road crash data from the South African Police Service (SAPS), Provincial Traffic Authorities, and Metropolitan Municipalities through Accident Report and the Quick Response forms.

The Accident Report forms are used to record data for all crash types (all injury types and damage only) while the Quick Response forms are mainly used to record fatal crashes and are captured only by the Corporation. Upon receipt of the Accident Report Forms some Metropolitan Municipalities, Provincial Traffic Authorities and the Corporation capture the data recorded on the forms.

For the purpose of compiling this report, other data sources were considered in order to provide a wide-ranging report. The former mentioned data sources are as follows:

- SAPS, for the Culpable Homicide case information, CAS Analysis Report,
- National Traffic Information System (eNatis), for vehicle and driver information,
- Statistics South Africa (Stats SA), for human population and labour force data,

## Limitations

The CAS Analysis Report received from the SAPS assists with data validation of the data already received from the various Police Stations regarding fatal crashes only.

In the reporting and capturing of road crash data it sometimes happens that crashes are duplicated. The verification of data is a lengthy and time consuming manual process, which amongst other things involves the comparison of the initial data received from various police stations at the time of the crash with that received from the central SAPS database. The process also involves the identification and elimination of duplicated reports; as well as follow-ups on the unconfirmed crash data.

Other limitation:

- Consolidated inputs from provinces not received on time.

## Road Traffic in 2011

The year 2011 has seen several projects that continued from the year 2010 and impacted road traffic in South Africa. These include in the most, the Gauteng Highway Improvement Project by South Africa National Roads Agency(SANRAL), the continued operation and introduction of new stations of the Gautrain and continued operation of the Bus Rapid Transit System, in some provinces and plan to roll out some of the projects in other provinces and cities, etc.

### Observed Changes in 2011:

A reduction has been observed for variables for the period under review:

- Crashes Fatalities (0.09%) from 13 967 to 13 954
- Unroadworthy vehicles (4.64%) from 428 714 to 408 815
- Number of fatal crashes per 10000 motorised vehicles (0.18%) from 12.29 to 12.27
- Number of fatalities per 10000 motorised vehicles (3.75%) from 15, 84 to 15,25

The down-ward trend of the variables above may be attributed to the following programmes undertaken by RTMC for the period under review:

National Rolling Enforcement Plan: Approved and signed off. The activities were conducted in collaboration with the provincial and municipal traffic departments.

The following achievements were recorded:

- Number of vehicles stopped and screened = 13 245 449
- Number of notices issued = 5 082 109
- Number of vehicles discontinued / suspended / impounded = 52 975
- Number of people arrested for all road traffic offences including driving whilst under the influence, dangerous driving, fraudulent public passenger transport documentation and other serious offences = 65 903.

### Road Safety Education projects:

- Scholar Patrol programme in all nine provinces: 19 660 learners participating
- Road Safety schools Debates: 35 learners participated.
- Participatory Educational Techniques: 70 learners in 7 schools participated.

### Road Traffic Law Enforcement

- Effective and efficient co-ordination of road traffic law enforcement across the three tiers of government as per the National Rolling Enforcement Plan(NREP)
- Identification of and greater focus on critical offences as per the major crash investigation
- Target of stopping and checking million vehicles per month, nationwide.
- Inclusion of special enforcement blitzes
- Greater media awareness of traffic law enforcement activities and interventions

### National Traffic Police

The Corporation established the National Traffic Police (NTP) which operates on a 24/7 basis. 221 Traffic Police and Superintendents and a National Chief of Traffic Police were appointed to capacitate the unit.

The following is progress on the unit's operations during the 3<sup>rd</sup> and 4<sup>th</sup> quarter of the year: 436 operations conducted which included some of the following:

- 52 joint operations (roadblocks),
- 312 Roadside check points
- 04 Learner transport checks
- 30 Drunk driving checks
- 08 Public Transport checks and
- 12 Crime prevention operations.

The output thereof was:

- 33568 prosecutions (citation or prosecution)
- 480 vehicles discontinued
- 9330 infringements written



## 1. Executive Summary

<b>1.1</b>		<b>Vehicle Population</b>
	1.1.1	The number of registered vehicles increased by 363 650. (3.70 %) from 9 829 400 on 31 December 2010 to 10 193 050 vehicles on 31 December 2011.
	1.1.2	On a percentage basis the biggest change was for heavy trailers which increased by 4.41% to 157 140, followed by motorcars which increased by 4.21% to 5 832 078.
<b>1.2</b>		<b>Driver Population</b>
	1.2.1	The number of learner driving licences issued decreased by 607, 00 (0.05%) from 1,341,450 on 31 December 2010 to 1,340,843 on 31 December 2011.
	1.2.2	The number of driving licences issued increased by 445,098 (4.82%) from 9,237,354 on 31 December 2010 to 9,682,452 on 31 December 2011.
	1.2.3	The number of Professional Driving Permits (PrDPs) issued increased by 55,091 (6.68%) from 824,817 on 31 December 2010 to 879,908 on 31 December 2011.
<b>1.3</b>		<b>Fatal Crashes and Fatalities</b>
	1.3.1	Over the 12 months period from 1 January 2011 to 31 December 2011 the number of fatal crashes increased by 391 (3.61%) from 10,837 crashes over the same period the previous year (2010) to 11,229.
	1.3.2	Over the 12month period from 1 January 2011 to 31 December 2011 the number of fatalities decreased by 13 (0.09%) from 13 967 fatalities over the same period the previous year to 13 954.
	1.3.3	The driver fatalities increased by 83 (2.03%) from 4,106 in 2010 to 4,189 in 2011. Passenger fatalities decreased by 466 (8.86%) from 5,253 to 4,787 and pedestrian fatalities increased by 369 (8.01%) from 4,609 to 4,978 over the 12-month period from 1 January 2011 to 31 December 2011.
	1.3.4	The severity of fatal crashes decreased by 0.05 (3.57%) from 1.29 during 2010 to 1.24 during 2011.
	1.3.5	The number of fatal crashes per 10 000 registered motorised vehicles decreased by 0.02 (0.18%) from 12.29 during 2010 to 12.27 during 2011.
	1.3.6	The number of fatalities per 10 000 registered motorised vehicles decreased by 0.59 (3.75%) from 15.84 during 2010 to 15.25 during 2011.
	1.3.7	The national number of fatalities per 100 000 human population decreased by 0.36 (1.27%) from 27.94 during 2010 to 27.58 during 2011.

## 1.4 Measuring Progress towards Achieving Target to Reduce Fatalities by 50% by 2015

Based on the 2006 Millennium Development Goals, one of the goals of the 2015 Road Traffic Safety Management Plan is to reduce the rate of accident fatalities arising from road and other transport by 2015 by half. The current report will be focusing on the road fatalities, while other transport reporting will be reported on by relevant lead agencies.

In the development of the 2015 Plan it was agreed that the number of all transport fatalities for the year 2007 would be used as the benchmark on which the 50% reduction would be based. Using this benchmark and the 50% target reduction, the maximum allowable number of road fatalities per quarter per province up to the end of 2015 was calculated as continuous reduced target figures over the 8 year period. These set targets for the indicated quarters for each province and the RSA total, are shown in Table 1 below, shown as "Target" figures or maximum allowable number of fatalities.

**Table 1: Rolling 12 months number of road fatalities per province**

Month	Item	GA	KZ	WC	EC	FS	MP	NW	LI	NC	RSA
Dec '10	Target	2 677	2 022	1 346	1 336	917	1 454	1 022	1 120	310	12 201
	Actual	2 181	2 788	1 323	1 784	1 169	1 591	1 159	1 528	446	13 967
	Difference	-496	766	-23	448	253	137	137	407	136	1 766
	% Diff	-18.53	37.87	-1.71	33.57	27.58	9.43	13.43	36.35	44.03	14.47
Mar '11	Target	2 625	1 983	1 320	1 310	899	1 426	1 002	1 099	304	11 968
	Actual	2 326	2 741	1 258	1 827	1 074	1 594	1 093	1 522	376	13 810
	Difference	-300	758	-62	516	176	168	91	423	72	1 842
	% Diff	-11.42	38.20	-4.71	39.40	19.52	11.80	9.10	38.49	23.63	15.39
Jun '11	Target	2 575	1 945	1 295	1 285	882	1 399	983	1 078	298	12 422
	Actual	2 574	2 741	1 177	1 698	1 054	1 620	1 103	1 582	354	13 904
	Difference	-1	796	-118	413	172	222	120	504	56	2 164
	% Diff	-0.04	40.92	-9.11	32.13	19.56	15.84	12.18	46.78	18.77	17.42
Sept '11	Target	2 526	1 908	1 270	1 261	865	1 372	964	1 057	292	11 515
	Actual	2 624	2 758	1 177	1 580	1 014	1 581	1 069	1 612	355	13 770
	Difference	98	850	-92	319	149	209	105	555	62	2 254
	% Diff	3.89	44.52	-7.28	25.29	17.18	15.26	10.91	52.47	21.34	19.58
Dec '11	Target	2 478	1 872	1 246	1 237	848	1 346	946	1 037	287	10 833
	Actual	2 725	2 752	1 185	1 653	1 016	1 639	1 018	1 673	295	13 954
	Difference	247	880	-60	416	167	293	72	635	8	2 659
	% Diff	9.97	47.00	-4.83	33.66	19.72	21.77	7.66	61.27	2.74	24.54

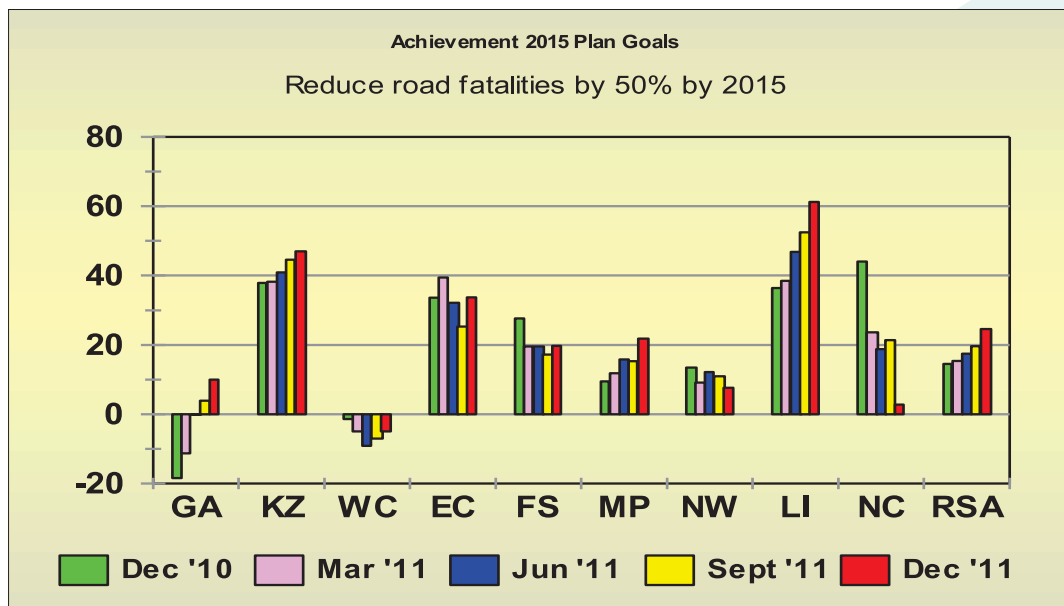
Source: South African Police Service and Road Traffic Management Corporation

Also shown in the table 1 are the Actual figures, which reflect the real number of road fatalities recorded per province for the respective quarters as indicated. Both the Target and Actual figures represent the 12 month rolling total fatality figures per province and the RSA on a national basis.

The differences as well as the percentage difference(%) figures in the table show the difference between the set Target and Actual number of road fatalities. A difference of "0" indicates that the set target of reducing the number of fatalities was met. Differences smaller than "0" (<0) shows achievements better than what is expected or required and differences larger than"0" (>0) shows that the required targets were not achieved and reflects inadequate performance towards reaching the desired goal per quarter and ultimately the 2015 goal.

The % difference in meeting the set targets per province is also reflected in the figure below:

**Figure 1: % Difference for rolling 12 months number of road fatalities per province**



The information in Table 1 and Figure 1 above shows that the better performing provinces (differences less than"0") that are well on track towards achieving the goal of reducing road fatalities by 50% by the year 2015, amongst others are:

- Western Cape: showing a continuous improvement in performance from -1.71% in December 2010 to -4.83% in December 2011.

The provinces that are not performing as required, (differences larger than “0”) are the following:

- **Gauteng:** has shown a gradual increase from its best level of 18.53% in December 2010 to above with 9.97% in December 2011.
- **Limpopo:** overall the worst performing province, with even a continuous increase in the quarterly number of road fatalities that exceed the set quarterly targets for the province – ranging from 36.35% in December 2010 to 61.27% in December 2011. This province was the biggest contributor to the national fatalities, on a national basis not achieving its set target towards the end of the review period.
- **KwaZulu-Natal:** made no contribution towards achieving the 2015 goals. Over the review period the performance of this province worsened from 37.87% in December 2010 to 47.00% in December 2011.
- The third least performing province is the Eastern Cape which also didn't add any contribution towards achieving the 2015 goals. Over the period under review performance ranged from 33.57% from December 2010 to 33.66% in December 2011.
- National - RSA: over the review period the national figures range from 14.47% in December 2010 to 24.54% in December 2011.

The country's performance towards the reduction of fatalities by 50% for the assessed period is deteriorating. The worst performing provinces listed above, contributed to this non-achieving trend, with the biggest negative influence from Limpopo, KwaZulu-Natal and Eastern Cape.

With performance towards achieving the targets deteriorating, this necessitates tightened interventions and special focus in those areas especially within law enforcement and continued education campaigns.

## 2. Vehicle Population

### 2.1 Number of Registered Vehicles

The number of registered vehicles increased by 363 650 (3,70%) from 9 829 400 in 2010 to 10 193 050 vehicles in 2011. Detail per type of vehicle is given in table below:

**Table 2: Number of registered vehicles per type/category: 2010-2011**

Vehicle Category	Number registered 2010	Number registered 2011	Change	% Change	% of Group 2011	% of Total 2011
<b>Motorised Vehicles</b>						
Motorcars	5 596 343	5 832 078	235 735	4.21	63.73	57.22
Minibuses	285 983	284 184	-1 799	-0.63	3.11	2.79
Buses	47 341	49 253	1 912	4.04	0.54	0.48
Motorcycles	327 275	339 913	12 638	3.86	3.71	3.33
LDV's - Bakkies	2 000 827	2 074 363	73 536	3.68	22.67	20.35
Trucks	324 997	333 245	8 248	2.54	3.64	3.27
Other & Unknown	233 600	237 769	4 170	1.78	2.60	2.33
<b>Total Motorised</b>	<b>8 816 366</b>	<b>9 150 805</b>	<b>334 440</b>	<b>3.79</b>	<b>100.00</b>	<b>89.77</b>
<b>Towed Vehicles</b>						
Caravans	105 251	104 825	-426	-0.40	10.06	1.03
Heavy Trailers	150 496	157 140	6 644	4.41	15.08	1.54
Light Trailers	740 443	763 461	23 018	3.11	73.25	7.49
Other & Unknown	16 845	16 819	-26	-0.15	1.61	0.17
<b>Total Towed</b>	<b>1 013 035</b>	<b>1 042 245</b>	<b>29 211</b>	<b>2.88</b>	<b>100.00</b>	<b>10.23</b>
<b>All Vehicles</b>	<b>9 829 400</b>	<b>10 193 050</b>	<b>363 650</b>	<b>3.70</b>		<b>100.00</b>

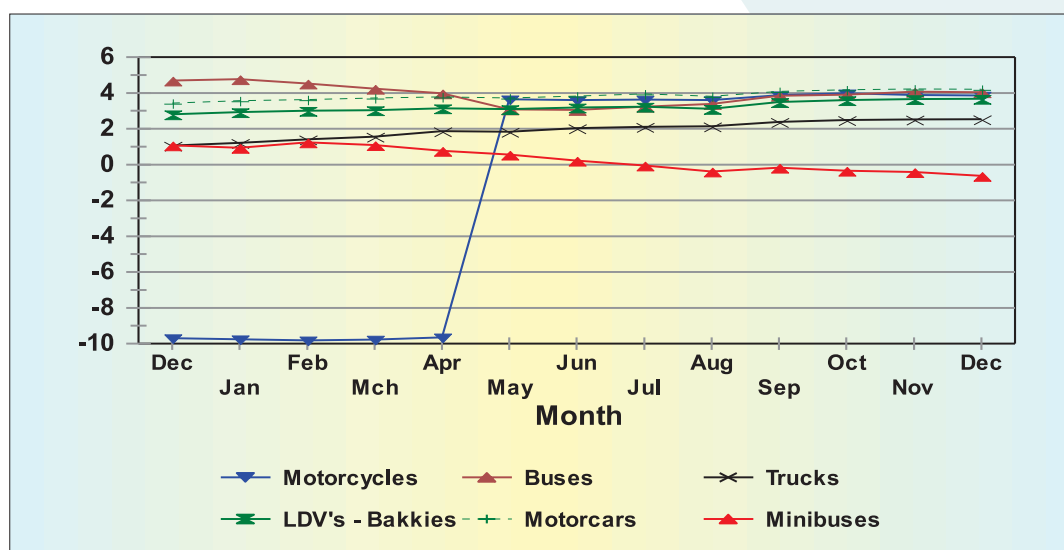
**Source: National Traffic Information System (NaTiS)**

The information in table 2 shows that on a percentage basis the biggest change was for registered heavy trailers which increased by 4.41% to 157 140 in 2011 compared to growth seen in buses in 2010, followed by motorcars which increased by 4.21% to 5 832 078. Buses increased by 4.04% to 49 253.

The monthly percentage change over the past year for specific types of vehicles; as well as motorised and towed vehicles, is shown in figure 2.

**Table 3: Number of registered vehicles per Province: 2010-2011**

Provinces	Number registered Dec 2010	Number registered Dec 2011	Change	% Change	% of Total Dec 2011
Gauteng	3 817 291	3 960 078	142 787	3.74	38.85
KwaZulu-Natal	1 334 316	1 381 721	47 405	3.55	13.56
Western Cape	1 594 785	1 640 723	45 938	2.88	16.10
Eastern Cape	677 597	694 821	17 224	2.54	6.82
Free State	548 098	563 594	15 496	2.83	5.53
Mpumalanga	635 718	672 481	36 763	5.78	6.60
North West	511 092	527 402	16 310	3.19	5.17
Limpopo	490 843	523 452	32 609	6.64	5.14
Northern Cape	219 660	228 778	9 118	4.15	2.24
<b>RSA</b>	<b>9 829 400</b>	<b>10 193 050</b>	<b>363 650</b>	<b>3.70</b>	<b>100</b>

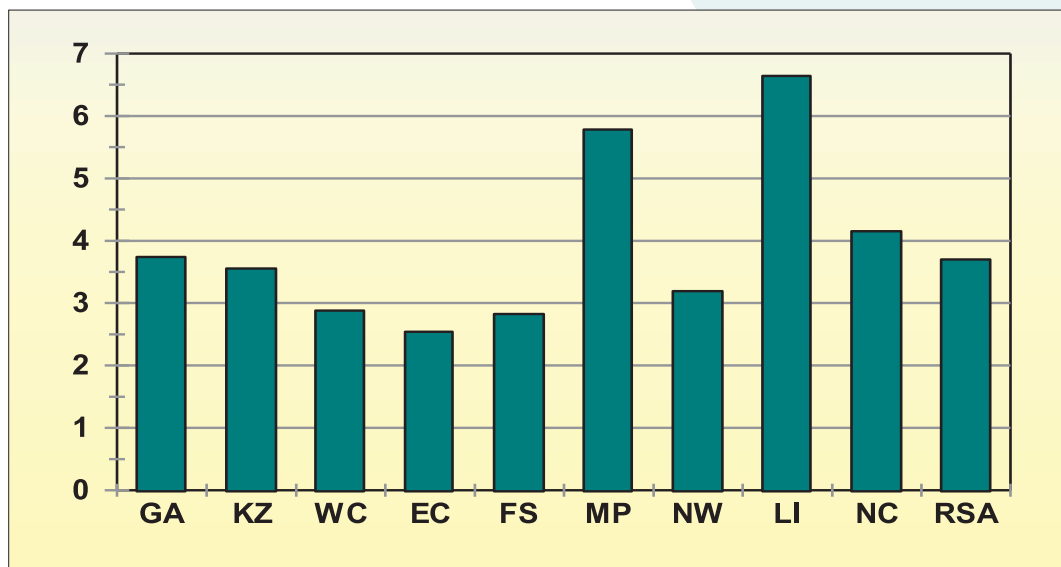
**Figure 2: Percentage monthly change in registered Motorised vehicles: 2010-2011**

The total motor vehicle population per province for the years 2010 and 2011 respectively is given in table 4 and reflected in figure 3.

**Table 4: Annual number of registered vehicles per province: 2010-2011**

Provinces	Number registered Dec 2010	Number registered Dec 2011	Change	% Change	% of Total Dec 2011
Gauteng	3,817,291	3,960,078	142,787	3.74	38.85
KwaZulu-Natal	1,334,316	1,381,721	47,405	3.55	13.56
Western Cape	1,594,785	1,640,723	45,938	2.88	16.10
Eastern Cape	677,597	694,821	17,224	2.54	6.82
Free State	548,098	563,594	15,496	2.83	5.53
Mpumalanga	635,718	672,481	36,763	5.78	6.60
North West	511,092	527,402	16,310	3.19	5.17
Limpopo	490,843	523,452	32,609	6.64	5.14
Northern Cape	219,660	228,778	9,118	4.15	2.24
<b>RSA</b>	<b>9,829,400</b>	<b>10,193,050</b>	<b>363,650</b>	<b>3.70</b>	<b>100</b>

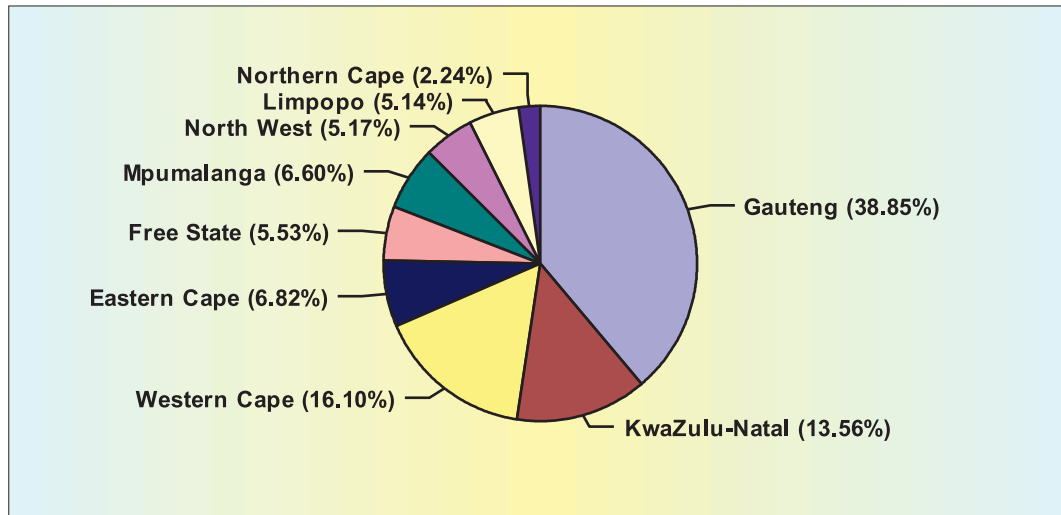
The figure below shows the growth in registered vehicles population per province extracted from Table 3 above. It clearly indicates that between the year 2010 and 2011 Limpopo had the highest growth of 6.64% while Eastern Cape shows the lowest growth of 2,54 from 2010-2011 as shown by Figure 3 below:

**Figure 3: Percentage annual growth in vehicle population per province (2010/2011)**

Source: National Traffic Information System (NaTiS)

The percentage vehicles registered per province in 2011 is reflected in figure 4.

**Figure 4: Percentage of registered vehicles per province: 2011**



The information in the graph above shows that 38.85% of all vehicles in South Africa are registered in Gauteng followed by Western Cape with 16.10%, and KwaZulu-Natal with 13.56%. The other provinces range between 6.82% and 2.24%.

## 2.2 Human Population and Mobility

The estimated human population on 31 December of each year from 2008 to 2011 is given in Table 5 below. (These figures are estimates from the mid-year estimates released annually by Statistics South Africa).

**Table 5: Estimated human population per province – millions: 2008-2011**

Year	GA	KZ	WC	EC	FS	MP	NW	LI	NC	Total RSA
2008	10.49	10.28	5.31	6.61	2.89	3.60	3.44	5.25	1.14	49.00
2009	10.86	10.55	5.29	6.70	2.86	3.61	3.33	5.33	1.13	49.66
2010	11.26	10.73	5.26	6.79	2.79	3.64	3.23	5.50	1.10	50.29
2011	11.54	10.91	5.27	6.88	2.73	3.67	3.21	5.64	1.08	50.93

Source: Statistics South Africa (StatsSA)



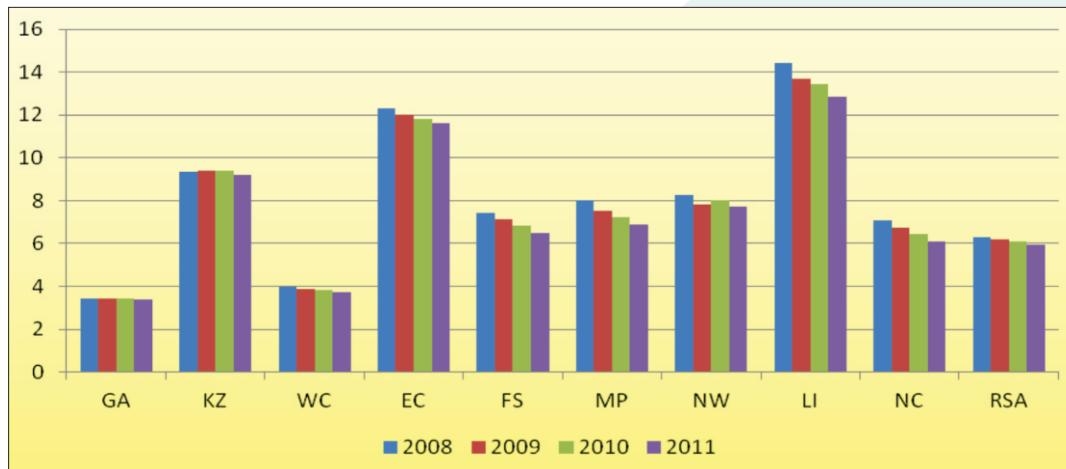
Based on the information on human and vehicle populations, the average number of persons per vehicle per province (excluding trucks, towed vehicles and "other" and "unknown" vehicles) at the end of December 2008, 2009, 2010 and 2011 is shown in Table 6 and figure 5 below:

**Table 6: Average number of persons per vehicle (excluding trucks, other and towed vehicles):2008-2011**

Year	GA	KZ	WC	EC	FS	MP	NW	LI	NC	RSA
2008	3.42	9.37	3.96	12.29	7.42	8.01	8.27	14.44	7.07	6.27
2009	3.45	9.42	3.90	12.02	7.14	7.51	7.81	13.70	6.75	6.17
2010	3.45	9.38	3.81	11.81	6.85	7.24	8.03	13.42	6.44	6.09
2011	3.40	9.19	3.72	11.62	6.47	6.90	7.71	12.84	6.09	5.94

Source: Road Traffic Management Corporation

**Figure 5: Average number of persons per vehicle (excluding trucks, other and towed vehicles) 2008-2011**

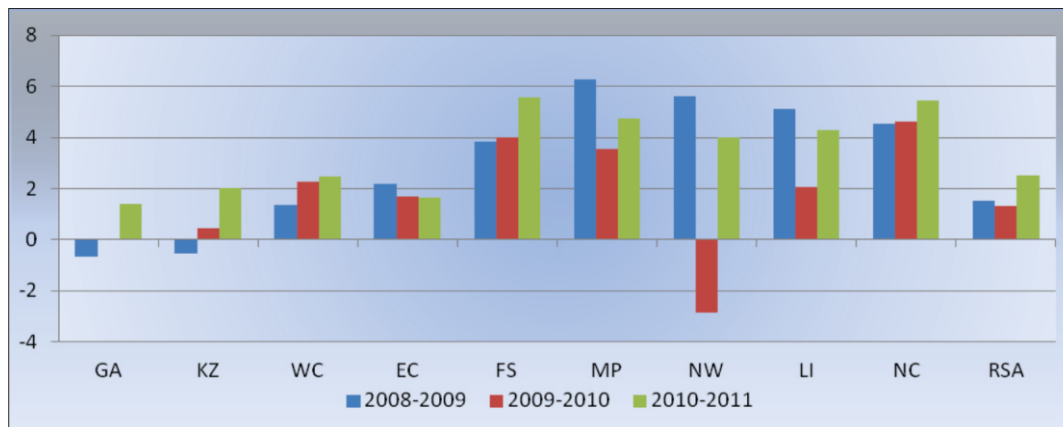


The % annual change in human mobility per province is reflected in Table 7 below:

**Table 7: % Change in mobility per province: 2008-2011**

Year	GA	KZ	WC	EC	FS	MP	NW	LI	NC	Total
2008-2009	-0.67	-0.56	1.37	2.18	3.83	6.26	5.60	5.12	4.53	1.54
2009-2010	0.05	0.46	2.28	1.68	3.98	3.56	-2.84	2.07	4.61	1.30
2010-2011	1.38	2.01	2.46	1.66	5.55	4.73	4.01	4.29	5.46	2.53

Source: Road Traffic Management Corporation

**Figure 6: % Change in mobility of persons: 2008-2011**

The information in Tables 6 and 7 and in figure 6, shows that nationally the general overall mobility in terms of the number of persons per road vehicle (vehicles that can reasonably transport passengers – motorcars, minibuses, buses, motorcycles and LDV's "bakkies"), improved by 1.54% from a national average of 6,27 persons per vehicle at the end of December 2008 to 6,17 persons per vehicle at the end of December 2009. From the end of December 2010 to December 2011 the improvement shows a decrease of 2.53%, from 6,09 to 5.94 persons per vehicle.

Although they do show some improvement, the "least mobile" provinces remain Limpopo with 12.84 persons per vehicle; followed by the Eastern Cape with 11,62 persons per vehicle at the end of December 2011. The "most mobile" provinces are Gauteng and the Western Cape with an average of 3,40 and 3,72 persons per vehicle respectively at the end of December 2011. One (1) out of the nine (9) provinces experienced a decline in mobility; Eastern Cape with a slight decrease of 0.02%.

The provinces with the best improvements in this regard are:

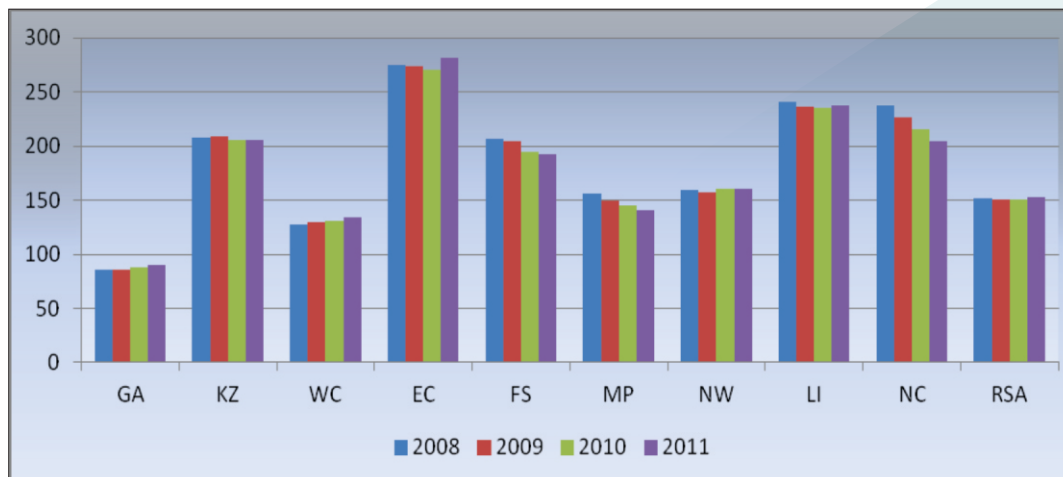
- Limpopo : 4.29% improvement from 13.42 to 12.84 persons per vehicle;
- Eastern Cape: 1.66% improvement from 11.81 to 11.62; and
- KwaZulu-Natal: 2.01% improvement from 9.38 to 9.19 persons per vehicle

The average number of persons per "heavy" road passenger transport vehicle (buses and minibuses) is shown in Table 8 and figure 7 .

**Table 8: Average number of persons per "Heavy" road passenger transport vehicle (buses and minibuses):2008-2011**

Month	GA	KZ	WC	EC	FS	MP	NW	LI	NC	RSA
2008	86	208	128	275	207	156	159	241	238	152
2009	86	209	130	274	204	149	157	236	227	151
2010	88	206	131	271	195	145	161	235	215	151
2011	90	206	134	282	192	141	161	237	205	153

Source: National Traffic Information System (NaTiS)

**Figure 7: Average number of persons per "Heavy" vehicle: 2008-2011**

The % annual change or improvement in the number of persons per "heavy" road transport vehicle per province is reflected in Table 9 below:

**Table 9: Percentage (%) Change in Average Number of Persons per "Heavy" Passenger Transport Vehicle (Buses and minibuses):2008-2011**

Month	GA	KZ	WC	EC	FS	MP	NW	LI	NC	Total RSA
2008-2009	-0.99	-0.81	-2.07	0.22	1.47	4.57	1.68	2.08	4.83	0.30
2009-2010	-1.73	1.58	-0.54	1.13	4.06	2.98	-2.63	0.44	4.94	0.29
2010-2011	-2.99	0.26	-2.51	-4.03	1.77	2.77	-0.28	-0.94	4.61	-1.24

Source: National Traffic Information System (NaTiS)

**Figure 8: Percentage change in persons per Heavy Vehicle**

The information in Tables 8 and 9 and figure 7 and 8 show that, after a previous year-on-year improvement, the national overall mobility and quality of public road transport in terms of the average number of persons per “heavy” passenger road transport vehicle from December 2010 to December 2011 decreased by 1,24% from about 151 persons per vehicle in 2010 to 153 persons per vehicle in 2011.

On a provincial percentage basis the biggest improvement was in the Northern Cape where the average number of persons per vehicle changed by 4.61% from about 215 persons per vehicle in December 2010 to 205 persons per vehicle at the end of December 2011. In Mpumalanga the improvement was 2,77% from 145 to 141 persons per vehicle.

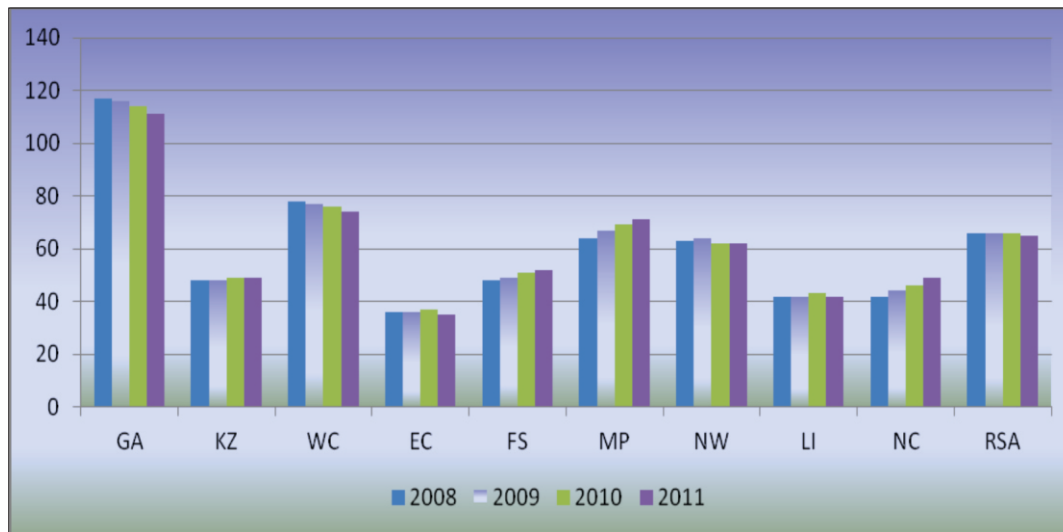
The biggest decrease in the quality of public passenger transport services was recorded in the Eastern Cape with a decrease of 4.03% from 271 to 282 persons per “heavy” public transport vehicle; followed by Gauteng with a decrease of 2.99% from 88 to 90.

The average number of “heavy” road passenger transport vehicle (buses and minibuses) per 10 000 human population per province is shown in Table 10 and reflected in the graph below:

**Table 10: Average Number of Public Transport Vehicles (buses and minibuses) per 10,000 Human Population**

Month	GA	KZ	WC	EC	FS	MP	NW	LI	NC	RSA
2008	117	48	78	36	48	64	63	42	42	66
2009	116	48	77	36	49	67	64	42	44	66
2010	114	49	76	37	51	69	62	43	46	66
2011	111	49	74	35	52	71	62	42	49	65

Source: National Traffic Information System (NaTiS) & Statistics South Africa (StatsSA)

**Figure 9: Percentage change in persons per Heavy Vehicle**

## 2.3. Unroadworthy and Unlicensed Vehicles

### 2.3.1. General

Unroadworthy vehicles are defined as those of which the owners failed to submit the vehicles for compulsory annual roadworthy tests (including buses, minibus taxis and freight transport vehicles) or on change of ownership. Unlicensed vehicles are those of which the owners failed to renew the vehicle licences within the time frame allowed.

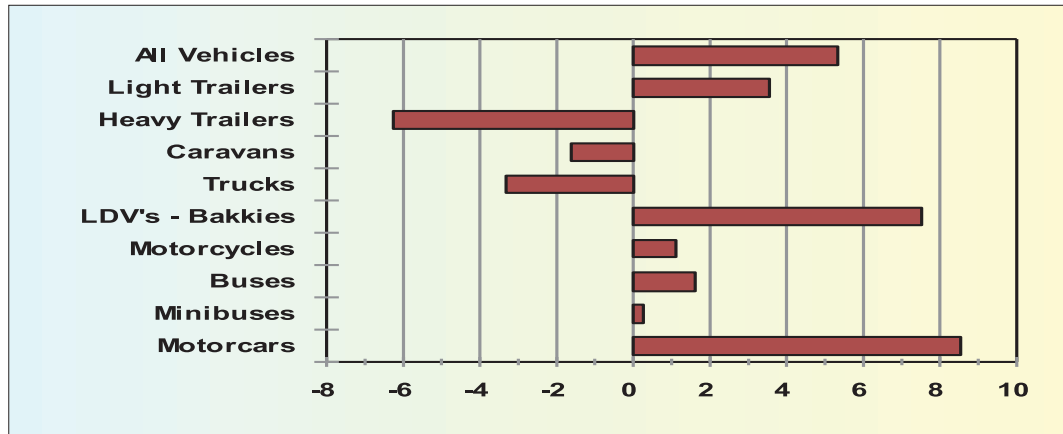
Nationally the total number of vehicles that are either Unroadworthy, Unlicensed or both increased by 40 441 (5.32%) from 760 628 vehicles on 31 December 2010 to 801 069 vehicles on 31 December 2011.

Detail in this regard per type of vehicle is provided in Table 11 and the percentage (%) change from 2009 to 2010 reflected in figure 10.

**Table 11: Number of Unroadworthy, Unlicensed Vehicles or Both**

Vehicle Type	Dec 2010	Dec 2011	Change	% Change
<b>Motorcars</b>	375,006	406,907	31,901	8.51
<b>Minibuses</b>	53,631	53,753	122	0.23
<b>Buses</b>	6,663	6,768	105	1.58
<b>Motorcycles</b>	57,085	57,718	633	1.11
<b>LDV's - Bakkies</b>	123,267	132,570	9,303	7.55
<b>Trucks</b>	57,545	55,635	-1,910	-3.32
<b>Caravans</b>	6,317	6,215	-102	-1.61
<b>Heavy Trailers</b>	21,574	20,223	-1,351	-6.26
<b>Light Trailers</b>	40,220	41,654	1,434	3.57
<b>Unknown</b>	19,320	19,626	306	1.58
<b>All Vehicles</b>	<b>760,628</b>	<b>801,069</b>	<b>40,441</b>	<b>5.32</b>

**Figure 10: Percentage change in number of vehicles Unroadworthy OR Unlicenced OR Both per Vehicle Type**



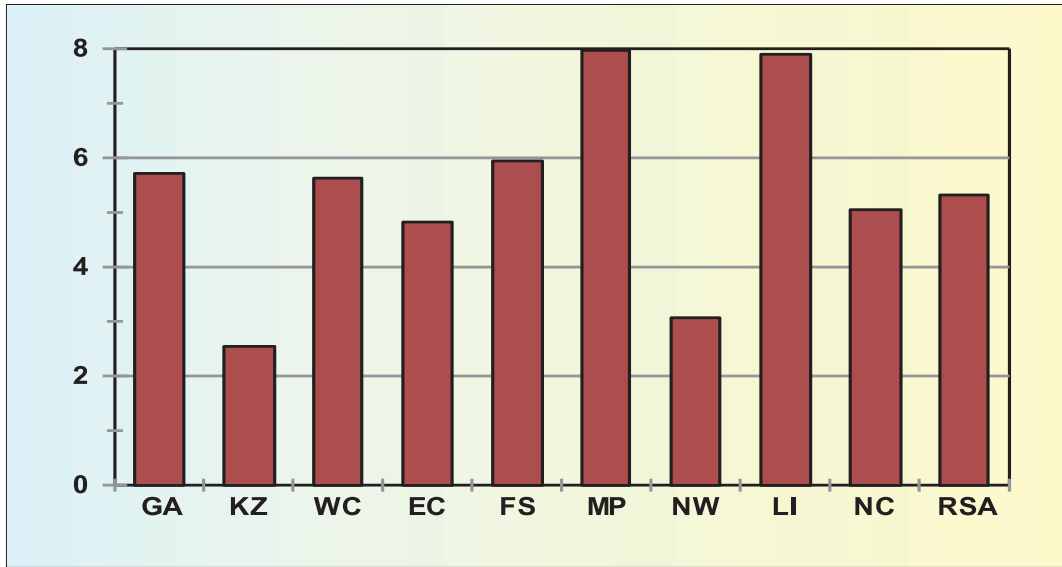
With the exception of Heavy Trailers, Caravans and Trucks, increases were recorded for most types of vehicles in this regard. The biggest increase was recorded for Motorcars, and the biggest decrease was recorded for Heavy Trailers.

Detail on the number of vehicles that are either unroadworthy, unlicensed or both per province is provided in Table 12 and the percentage (%) change from 2010 to 2011 reflected in figure 11.

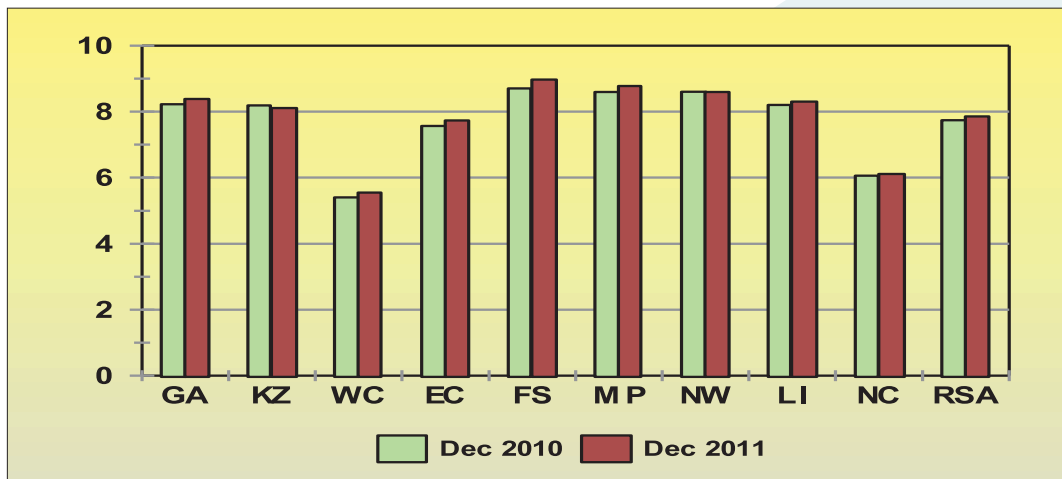
**Table 12: Number of Vehicles that are Unroadworthy OR Unlicenced OR Both**

Year	GA	KZ	WC	EC	FS	MP	NW	LI	NC	RSA
Dec 2010	313,976	109,269	86,171	51,255	47,723	54,664	43,978	40,286	13,306	760,628
Dec 2011	331,925	112,046	91,019	53,728	50,558	59,019	45,328	43,468	13,978	801,069
Change	17,949	2,777	4,848	2,473	2,835	4,355	1,350	3,182	672	40,441
% Change	5.72	2.54	5.63	4.82	5.94	7.97	3.07	7.90	5.05	5.32

**Figure 11: Percentage change in number of vehicles Unroadworthy OR Unlicenced OR Both**



**Figure 12: Percentage change in number of vehicles Unroadworthy**



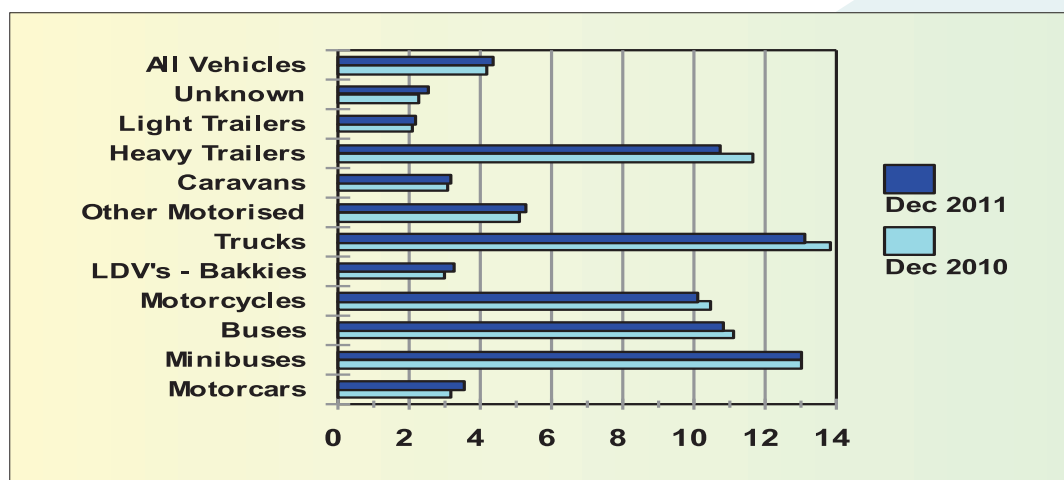
The information in table 12 and figure 11 shows that all provinces recorded an increase in the number of vehicles that are Unroadworthy or Unlicenced or both. Provincially the biggest increase was recorded in Mpumalanga where the number of vehicles in this regard increased by 4 355 (7.97%), followed by Limpopo with 7.90%.

**2.3.2 Number of Unroadworthy Vehicles**

The number of vehicles that are Unroadworthy unroadworthy (but licensed) increased by 34 925 (8.54%) from 408 815 vehicles on 31 December 2010 to 443 740 vehicles on 31 December 2011. Detail in this regard is given in Table 13 and the percentage of Unroadworthy vehicles per type of vehicle, as a percentage of the number registered, is reflected in figure 13.

**Table 13: Number of Unroadworthy Vehicles**

Vehicle Type	Dec 2010	Dec 2011	Change	% Change
Motorcars	179,497	206,180	26,683	14.87
Minibuses	37,106	36,937	-169	-0.46
Buses	5,272	5,355	83	1.57
Motorcycles	34,146	34,283	137	0.40
LDV's - Bakkies	59,889	67,747	7,858	13.12
Trucks	44,939	43,739	-1,200	-2.67
Caravans	3,259	3,380	121	3.71
Heavy Trailers	17,569	16,840	-729	-4.15
Light Trailers	15,397	16,701	1,304	8.47
Unknown	11,741	12,578	837	7.13
<b>All Vehicles</b>	<b>408,815</b>	<b>443,740</b>	<b>34,925</b>	<b>8.54</b>

**Figure 13: Percentage of Unroadworthy Vehicles**

The information in the table 13 shows that with the exception of minibuses, trucks and heavy trailers all provinces recorded an increase in the number of vehicles that are unroadworthy with the numbers showing 26 683 (14.87%) from 179 497 at the end of December 2010 to 206 180 Unroadworthy at the end of December 2011.

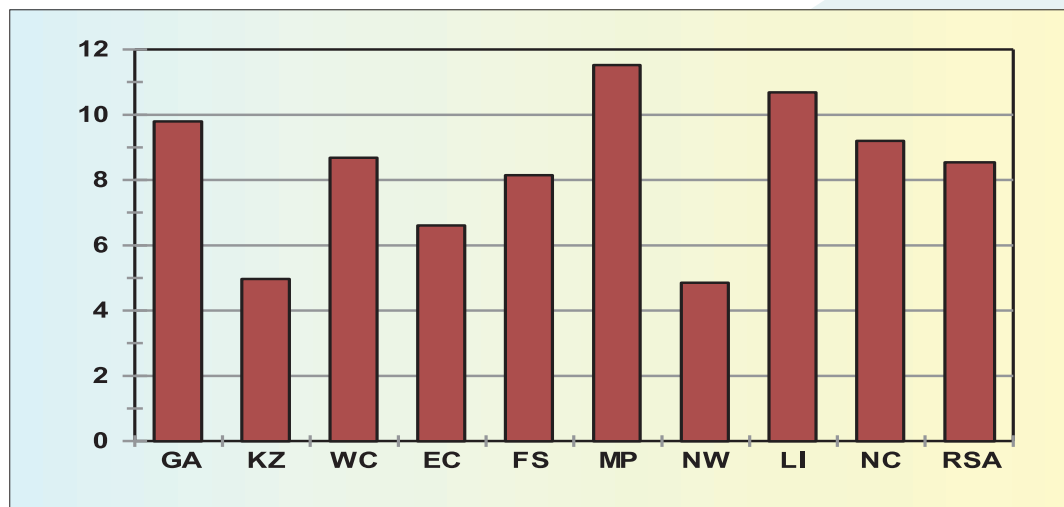


Details on the number of vehicles that are Unroadworthy per province are provided in Table 14 and the percentage (%) change from 2010 to 2011 reflected in figure 14.

**Table 14: Number of Unroadworthy Vehicles**

Year	GA	KZ	WC	EC	FS	MP	NW	LI	NC	RSA
Dec 2010	172,282	61,669	44,690	23,647	26,942	30,560	22,442	20,104	6,479	408,815
Dec 2011	189,152	64,733	48,570	25,209	29,137	34,081	23,531	22,252	7,075	443,740
Change	16,870	3,064	3,880	1,562	2,195	3,521	1,089	2,148	596	34,925
% Change	9.79	4.97	8.68	6.61	8.15	11.52	4.85	10.68	9.20	8.54

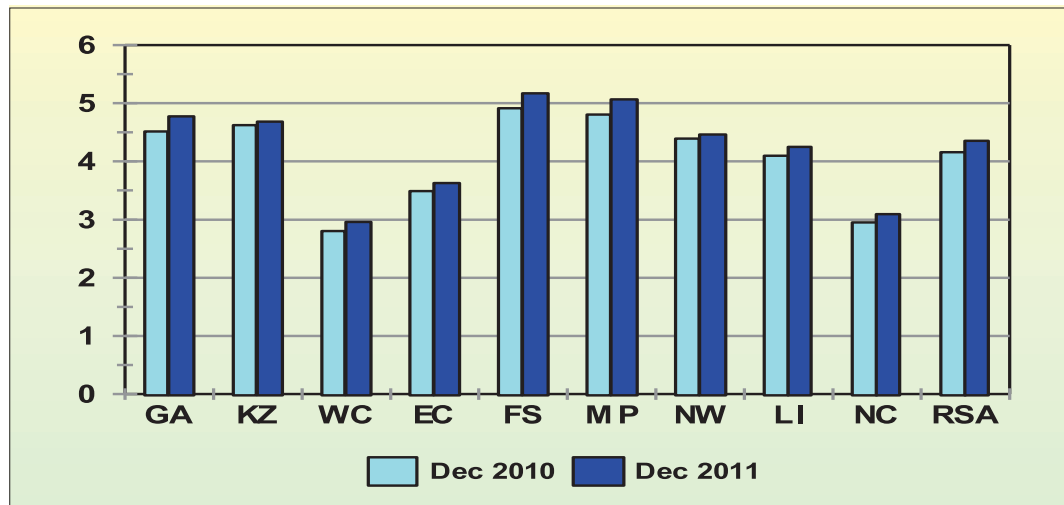
**Figure 14: Percentage in number of Vehicles that are Unroadworthy per Province**



The information in table 14 and figure 14 shows that all provinces recorded an increase in the number of Unroadworthy vehicles. On a percentage basis the biggest increase was recorded in Mpumalanga where the number of Unroadworthy vehicles increased by 3 521 (11.52%) from 30 560 in 2010 to 34 081 at the end of December 2011. Other large increases in this regard are: Limpopo where the number of Unroadworthy vehicles increased by 2 148 (10.68%) from 20 104 in 2010 to 22 252 at the end of December 2011, followed by Gauteng with an increase of 9.79% followed by Northern Cape with an increase of 9.20%.

The percentage of Unroadworthy vehicles per province, expressed as a percentage of the total number of vehicles registered per province, is shown in Figure 15.

Figure 15: Percentage of Unroadworthy Vehicles



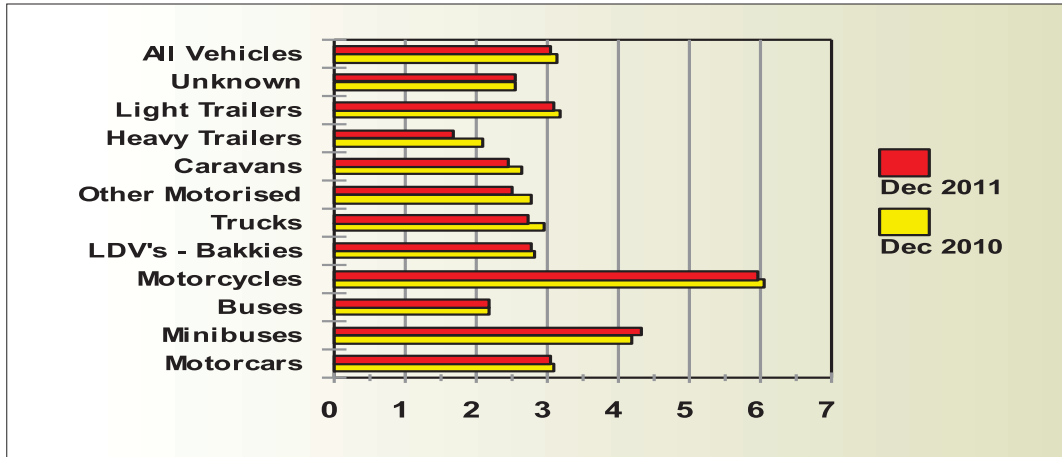
### 2.3.3 Number of Unlicensed Vehicles

On a national basis the number of Unlicensed vehicles increased by 4 168 (1.35%) from 307 656 vehicles on 31 December 2010 to 311 824 vehicles on 31 December 2011. Detail per type of vehicle in this regard is given in Table 15 and the percentage of unlicensed vehicles per type of vehicle, as a percentage of the number registered, is reflected in figure 16.

**Table 15: Number of Unlicensed Vehicles**

Vehicle Type	Dec 2010	Dec 2011	Change	% Change
Motorcars	172,537	176,695	4,158	2.41
Minibuses	12,027	12,329	302	2.51
Buses	1,040	1,077	37	3.56
Motorcycles	19,802	20,266	464	2.34
LDV's - Bakkies	56,414	57,217	803	1.42
Trucks	9,590	9,064	-526	-5.48
Caravans	2,781	2,585	-196	-7.05
Heavy Trailers	3,165	2,675	-490	-15.48
Light Trailers	23,495	23,505	10	0.04
Unknown	6,805	6,411	-394	-5.79
<b>All Vehicles</b>	<b>307,656</b>	<b>311,824</b>	<b>4,168</b>	<b>1.35</b>

**Figure 16: percentage of Unlicensed Vehicles**

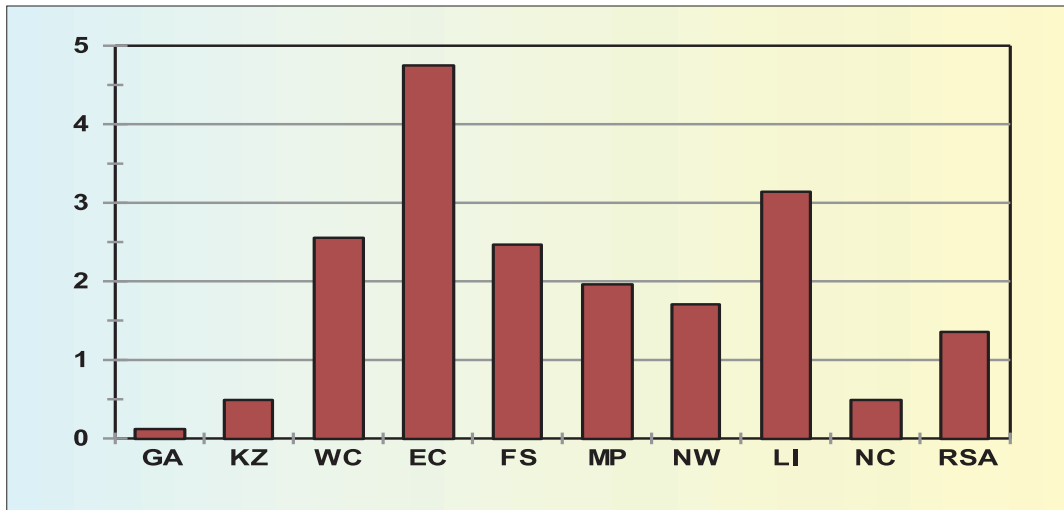


The information in the table and graph above shows that with exception of Trucks, Caravans and heavy trailers all other vehicle types recorded an increase in the number of unlicensed vehicles. On a percentage basis the biggest increase was recorded for buses with 3.56% from 1 040 down to 1 077.

Detail on the number of vehicles that are Unlicensed per province is provided in Table 16 and the percentage (%) change from 2010 to 2011 reflected in figure 17.

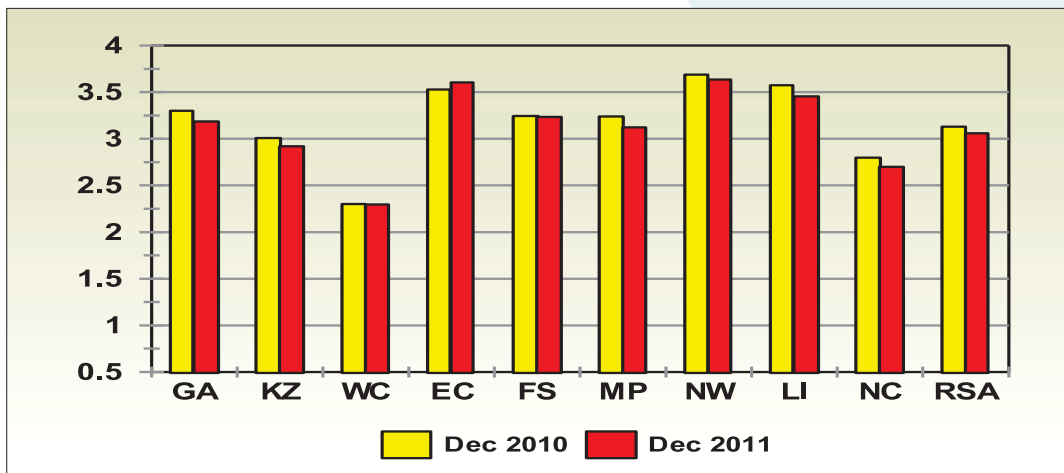
**Table 16: Number of Unlicensed Vehicles**

Year	GA	KZ	WC	EC	FS	MP	NW	LI	NC	RSA
<b>Dec 2010</b>	125,985	40,137	36,709	23,915	17,781	20,597	18,849	17,539	6,144	<b>307,656</b>
<b>Dec 2011</b>	126,136	40,334	37,647	25,051	18,220	21,001	19,171	18,090	6,174	<b>311,824</b>
<b>Change</b>	151	197	938	1,136	439	404	322	551	30	<b>4,168</b>
<b>% Change</b>	0.12	0.49	2.56	4.75	2.47	1.96	1.71	3.14	0.49	<b>1.35</b>

**Figure 17: Percentage change in number of Vehicles that are Unlicensed per Province**

The information in the table and graph above show that the biggest increase in the number of Unlicensed vehicles were recorded in Eastern Cape (4.75%), followed by Limpopo and Western Cape with 3.14% and 2.56% respectively.

The percentage of unlicensed vehicles per type of vehicle, as a percentage of the number registered per province, is reflected in figure 18.

**Figure 18: Percentage of Unlicensed Vehicles**

Detailed information on the number of Unroadworthy and Unlicensed vehicles per type of vehicle per province is provided in the tables under **Annexure B**

### 3. DRIVER POPULATION

#### 3.1. Learner's Licences

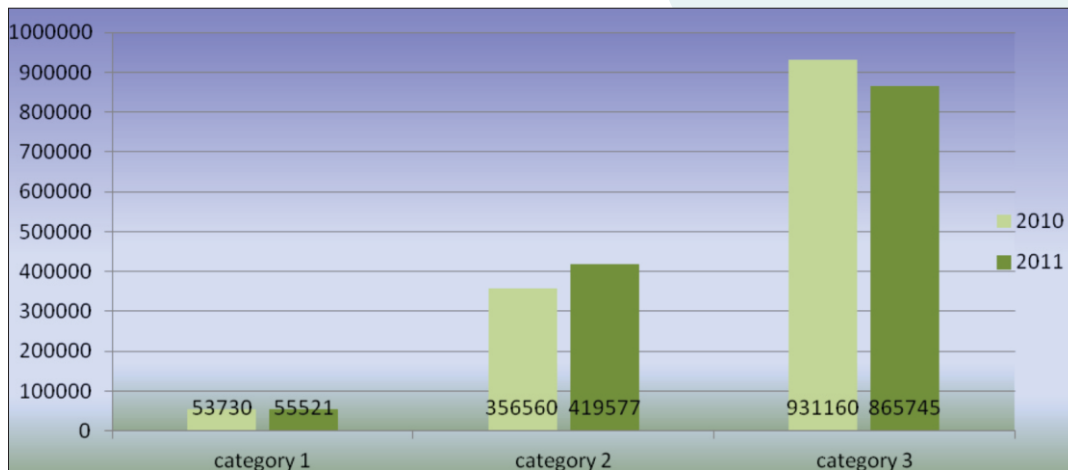
The number of learner's licences issued decreased by 607 (0,05%) from 1 341450 on 31 December 2010 to 1340 843 on 31 December 2011. Details on the number of learner driving licences issued per category (Category1: motorcycle, Category2: light motor vehicle, Category3: heavy motor vehicle) is given in Table 17 and graphically reflected in the Figure 19 below:

**Table 17: Number of Learner Licenses issued**

Category	2010	2011	Change	% Change
1	53730	55521	1791	3.33
2	356560	419577	63017	17.67
3	931160	865745	-65415	-7.03
<b>Total</b>	<b>1341450</b>	<b>1340843</b>	<b>-607</b>	<b>-0.05</b>

Source: National Traffic Information System (NaTIS)

**Figure 19: Number of Learner Driving Licences Issued**



Provincial information in this regard is given in Table 18 and the percentage change per province over the 12 month period is reflected in figure 20.

**Table 18: Number of Learners Licences Issued per Province: 2010-2011**

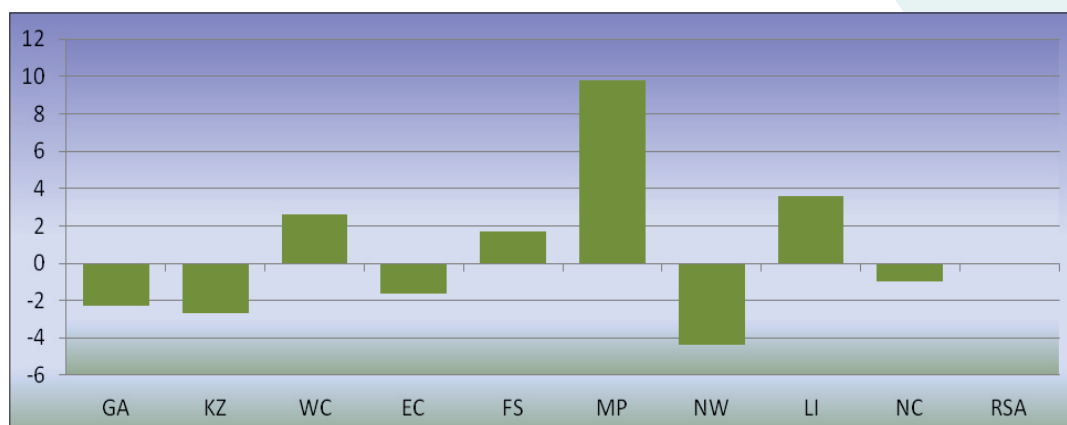
Year	GA	KZ	WC	EC	FS	MP	NW	LI	NC	RSA
2010	426 646	199 024	203 164	119 867	79 601	97 656	76 637	109 448	29 407	1 341 450
2011	416 838	193 642	208 495	117 935	80 950	107 215	73 268	113 380	29 120	1 340 843
Change	-9 808	-5 382	5 331	-1 932	1 349	9 559	-3 369	3 932	-287	-607
% Change	-2.30	-2.70	2.62	-1.61	1.69	9.79	-4.40	3.59	-0.98	-0.05

Source: National Traffic Information System (NaTIS)

Provincially, the North West and Northern Cape has reported a decline in the number of learner's licence issued in 2011, with -4.40% and -0.98%, respectively. The same trend was reported between 2009 and 2010; however, compared to the current period assessed, it is a significant improvement. The decline for both provinces was at -9.96% for North West, and -4.18% for the Northern Cape between 2009 and 2010.

Other provinces that experienced an increase between 2009 and 2010 have reported a decline between 2010 and 2011. These provinces are:

- Western Cape: 8,27% (2009-2010) to 2.62%(2010-2011);
- Eastern Cape: 8.25% (2009-2010) to -1.61%(2010-2011);
- KwaZulu-Natal: 7.04%(2009-2010) to -2.70%(2010-2011), and with the exception of; and
- Mpumalanga which experienced an increase from 5.64% (2009-2010) to 9.79%(2010-2011).

**Figure 20: Percentage change in Learner Licences Issued**

The overall issuing of learner's licences in RSA has decreased slightly.

### 3.2. Driving Licences Issued

The number of driving licences issued increased by 445 098 (4,82%) from 9 237, 354 on 2010 to 9 682, 452 on 2011. Details on the number of driving licences issued per category are given in table 19 and figure 21 below:

**Table 19: Number of Driving Licences Issued**

Category	Description	2010	2011	Change	% Change
A	Motorcycle > 125 cub.cm	423 023	429 872	6 849	1.62
A1	Motorcycle < 125 cub.cm	122 897	123 272	375	0.31
B	Motor vehicle < 3,5000 kg	1 787 976	1 961 788	173 812	9.72
C	Motorvehicle > 16,000 kg	15 881	16 822	941	5.93
C1	Motor vehicle 3,500 - 16,000 kg	1 773 858	2 022 779	248 921	14.03
EB	Articulated motor vehicle <16,000 kg	3 624 088	3 628 141	4 053	0.11
EC	Articulated vehicle > 16,000 kg	885 165	896 723	11 558	1.31
EC1	Articulated vehicle 3,500 - 16,000 kg	604 466	603 055	-1 411	-0.23
<b>Total</b>		<b>9 237 354</b>	<b>9 682 452</b>	<b>445 098</b>	<b>4.82</b>

Source: National Traffic Information System (NaTIS)

**Figure 21: Number of Driving Licences Issued**

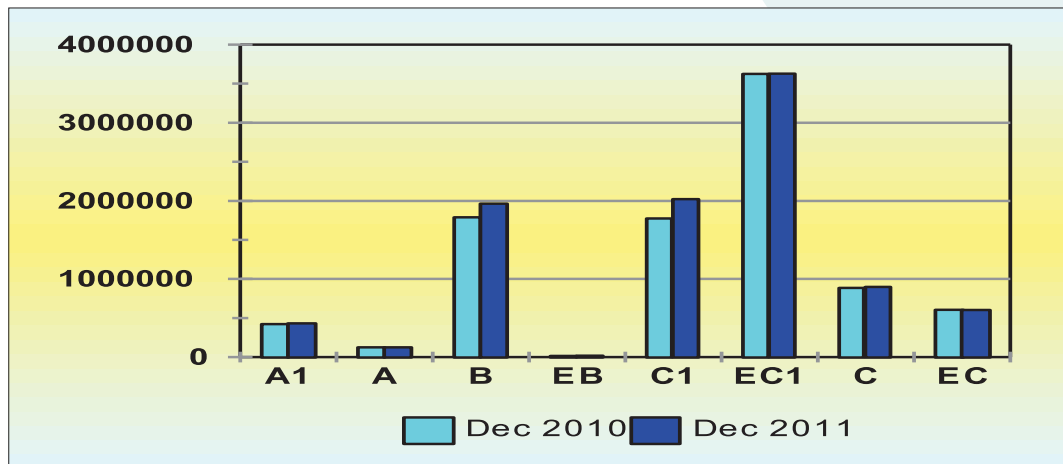


Figure 21 above illustrates the number of driver's licences issued categorically, for the period between 2010 and 2011. This shows that EC1 (articulated vehicle 3500-16000) remains the highest in numbers and is the most preferred driving licence while the preference of EC (articulated vehicle >16000) driving licence issued has decreased.

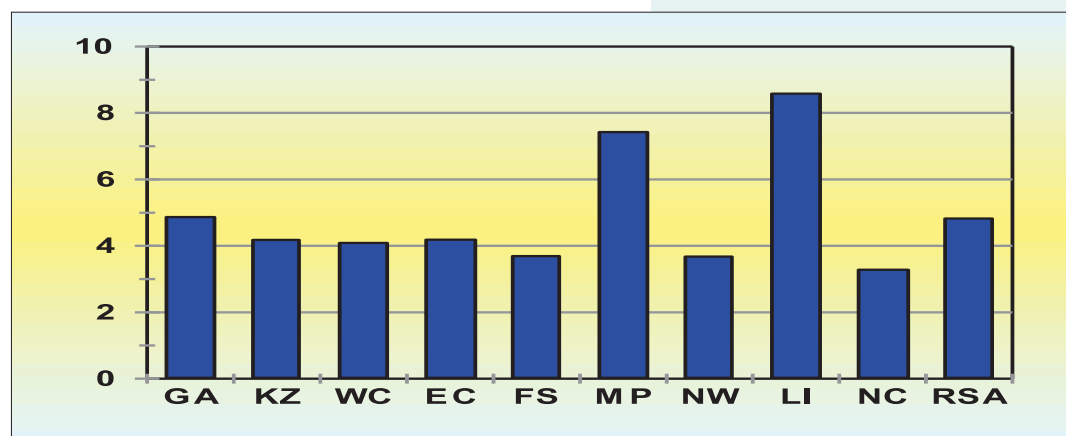
Provincial information in this regard is given in table 20 and the percentage change with regard to all licences issued per province is reflected in figure 22.

**Table 20: Number of Driving Licences Issued per Province**

Year	GA	KZ	WC	EC	FS	MP	NW	LI	NC	RSA
2010	3 262 916	1 476 979	1 519 127	678 516	506 962	577 264	452 595	583 685	179 310	9 237 354
2011	3 421 668	1 538 708	1 581 157	706 922	525 664	620 130	469 228	633 787	185 188	9 682 452
Change	158 752	61 729	62 030	28 406	18 702	42 866	16 633	50 102	5 878	445 098
% Change	4.87	4.18	4.08	4.19	3.69	7.43	3.68	8.58	3.28	4.82

Source: National Traffic Information System (NaTIS)

**Figure 22: Percentage change in Driving Licences Issued per province**



The overall change in driving licences issued shows a positive growth in all provinces. Limpopo is the leading province followed by Mpumalanga, while Northern Cape is the lowest followed by North West.

### 3.3. Professional Driving Permits Issued

The number of Professional Driving Permits (PrDPs) issued increased by 55 091 (6,68%) from 824 817 in 2010 to 879908 in 2011. Detail on the number of PrDPs issued per category is given in Table 21 and graphically reflected in figure 23.

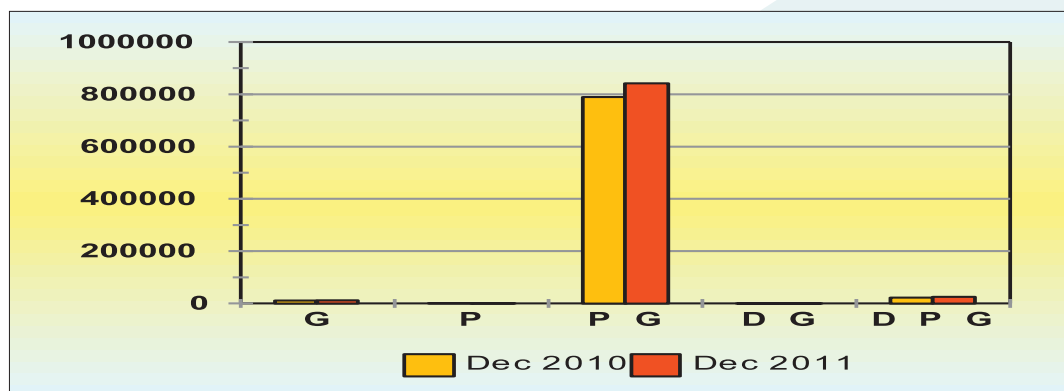


**Table 21: Number of PrDPs Issued per Annum**

Category	2010	2011	Change	% Change
Goods	11 182	11 670	488	4.36
Passengers	1 840	730	-1 110	-60.33
Passengers and Goods	789 771	842 316	52 545	6.65
Dangerous Goods	138	121	-17	-12.32
Dangerous Goods, Passengers, Goods	21 886	25 071	3 185	14.55
<b>Total</b>	<b>824 817</b>	<b>879 908</b>	<b>55 091</b>	<b>6.68</b>

Source: National Traffic Information System (NaTIS)

The Table 21 above shows an overall increase PrDPs, while two categories recorded declines in their numbers. The passenger's category reported a decline of -60.33% while dangerous goods category also reported a decline of -12.32%. The dangerous goods, passengers and goods category reported an increase of 14.55%.

**Figure 23: Number of PrDPs Issued**

Provincial information in this regard is given in table 22 and the percentage change with regard to all categories of PrDPs issued per Province is reflected in figure 24 below:

**Table 22: Number of Professional Driving Permits (PrDPs) Issued per Province**

Year	GA	KZ	WC	EC	FS	MP	NW	LI	NC	RSA
2010	227 325	139 423	116 060	64 736	52 140	74 908	46 339	83 603	20 283	824 817
2011	243 063	147 838	123 809	68 231	55 467	81 855	47 535	90 929	21 181	879 908
Change	15 738	8 415	7 749	3 495	3 327	6 947	1 196	7 326	898	55 091
% Change	6.92	6.04	6.68	5.40	6.38	9.27	2.58	8.76	4.43	6.68

Source: National Traffic Information System (NaTIS)

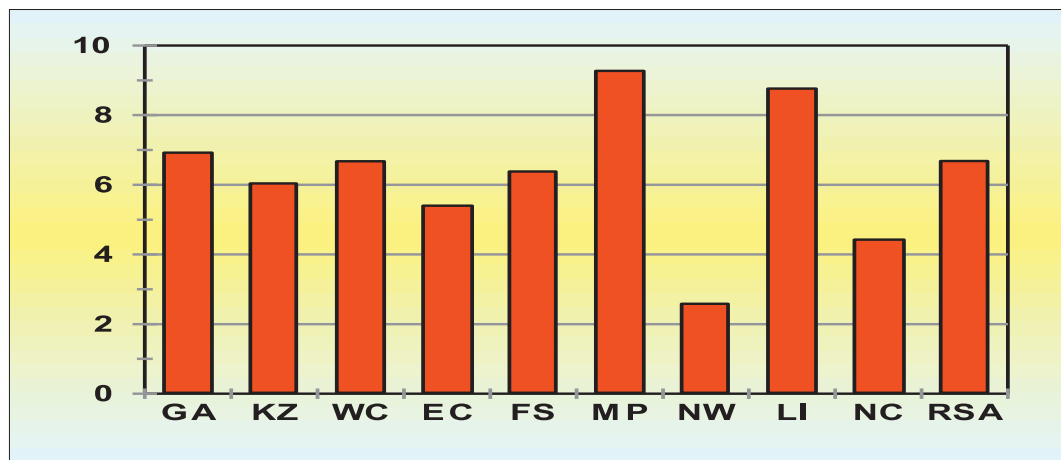
**Figure 24: Percentage change in PrDPs Issued per province**

Figure 24 represents a significant increase in the issuing of PrDPs provincially with Mpumalanga having the highest increase of 9.27% followed by Limpopo with 8,76 while North West has the lowest increase of 2,58%.

## 4. FATAL ROAD TRAFFIC CRASHES AND FATALITIES

### 4.1. Number of Fatal Crashes

Over the 12 months period from 1 January 2011 to 31 December 2011 the number of fatal crashes increased by 391 (3.61%) from 10,837 crashes over the same period the previous year (2010) to 11,228 in 2011. Provincial detail in this regard is given in Table 23 below:

**Table 23: Number of Fatal Crashes per Province over 12-month Period**

Year	GA	KZ	WC	EC	FS	MP	NW	LI	NC	RSA
2010	1,959	2,249	1,029	1,272	823	1,188	869	1,160	288	10,837
2011	2,321	2,281	1,039	1,312	813	1,132	844	1,224	262	11,228
Change	362	32	10	40	-10	-56	-25	64	-26	391
% change	18.48	1.42	0.97	3.14	-1.22	-4.71	-2.88	5.52	-9.03	3.61

Source: South African Police Service and Road Traffic Management Corporation

Decreases in the number of fatal crashes were recorded in the following four provinces:

- Free State a decrease of 10 (1.22%) from 823 to 813;
- Mpumalanga a decrease of 56 (4.71%) from 1,188 to 1,132;
- North West a decrease of 25 (2.88%) from 869 to 844; and
- Northern Cape a decrease of 26 (9.03%) from 288 to 262.

Increases over the 12 month period from 1 January 2011 to 31 December 2011 were recorded under the following five provinces:

- Gauteng : an increase of 362 (18,48%) from 1,959 to 2,321;
- KwaZulu-Natal : an increase of 32 (1,42%) from 2,249 to 2,281;
- Western Cape : an increase of 10 (0,97%) from 1,029 to 1,039;
- Eastern Cape : an increase of 40 (3,14%) from 1,272 to 1,312; and
- Limpopo: an increase of 64 (5.52%) from 1,160 to 1,224.

Table 24 and figure 25 shows the different averages of fatal crashes per province, per month and per day. This information shows that an average of 1204 crashes occurred in each province during 2010 and 1248 during 2011.

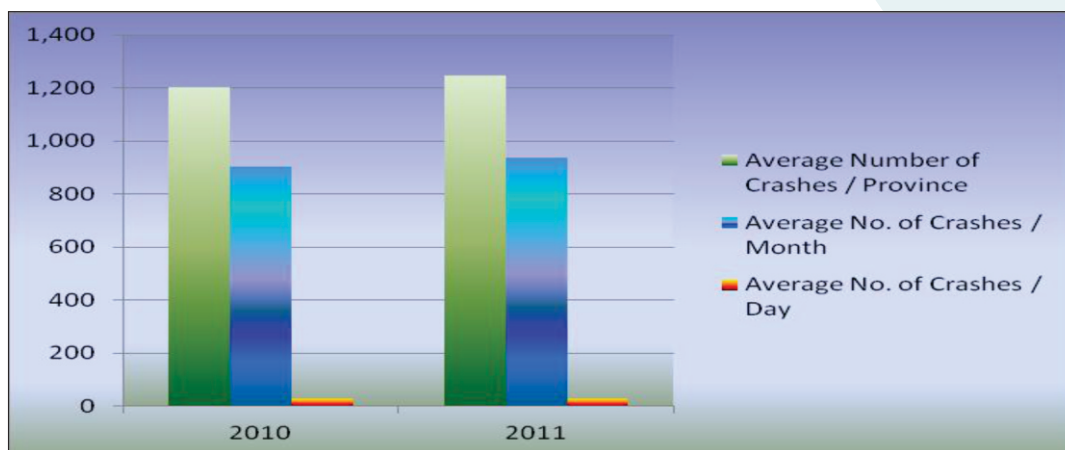
On average 903 crashes occurred per month during 2010 and 936 per month during 2011. The average number of fatal crashes per day increased from 30 during 2010 to 31 during 2011.

**Table 24: Average number of Crashes**

	2010	2011	Change	% Change
<b>Total number of fatal crashes</b>	10,837	11,228	391	3.61
<b>Average Number of Crashes / Province</b>	1,204	1,248	44	3.65
<b>Average No. of Crashes / Month</b>	903	936	30	3.32
<b>Average No. of Crashes / Day</b>	30	31	1	3.37

*Source: South African Police Service and Road Traffic Management Corporation*

**Figure 25: Average number of Fatal Crashes**



The monthly number of fatal crashes over the two comparative years are given in table 25 and graphically reflected in figure 26.

**Table 25: Number of Fatal Crashes per month**

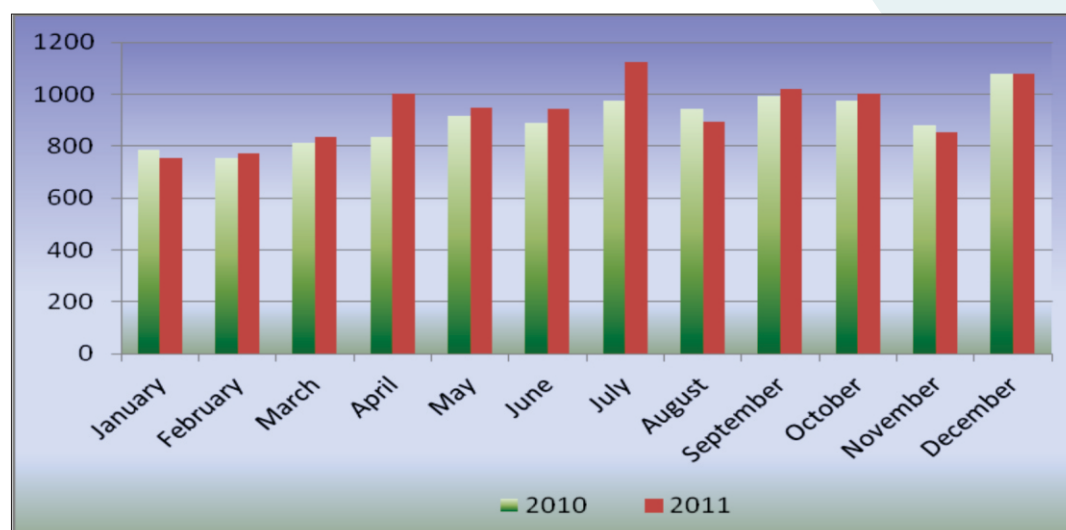
Month	2010	2011	Change	% change
January	785	753	-32	-4.08
February	754	771	17	2.25
March	812	835	23	2.83
April	834	1,002	168	20.14
May	916	947	31	3.38
June	887	944	57	6.43
July	976	1,126	150	15.37
August	942	893	-49	-5.20
September	995	1,021	26	2.61
October	976	1,004	28	2.87
November	882	852	-30	-3.40
December	1,078	1,080	2	0.19
<b>Total</b>	<b>10,837</b>	<b>11,228</b>	<b>391</b>	<b>3.61</b>

*Source: South African Police Service and Road Traffic Management Corporation*

The figures given in table 19 and reflected in figure 26 show that the months with the highest number of fatal crashes during 2011 were the following:

- April : 1002 crashes, 168 more than April 2010;
- July : 1126 crashes, 150 more than July 2010;
- September : 1021 crashes, 26 more than September 2010;
- October : 1004 crashes; 28 more than October 2010; and
- December : 1080 crashes (2 more than December 2010).

**Figure 26: Number of Fatal Crashes per month**



The number of fatal crashes per month per province is given in **Annexure D**.

#### 4.2. Number of Fatalities

Over the 12 month period from 1 January 2010 to 31 December 2011 the number of fatalities decreased by 13 (0.09%) from 13,967 fatalities over the same period the previous year to 13,954. Provincial detail in this regard is given in Table 26 below:

**Table 26: Provincial Number of Fatalities**

Year	GA	KZ	WC	EC	FS	MP	NW	LI	NC	RSA
2010	2,181	2,788	1,323	1,784	1,169	1,591	1,159	1,528	446	13,967
2011	2,717	2,752	1,187	1,653	1,017	1,637	1,019	1,676	296	13,954
Change	536	-36	-136	-131	-152	46	-140	148	-150	-13
% change	24.60	-1.28	-10.25	-7.36	-13.02	2.91	-12.06	9.71	-33.64	-0.09

**Source: South African Police Service and Road Traffic Management Corporation**

Decreases were recorded in the following six provinces:

- KwaZulu-Natal : a decrease of 36 (1,28%) from 2788 to 2752;
- Western Cape : a decrease of 136 (10,25%) from 1323 to 1187;
- Eastern Cape : a decrease of 131 (7,36%) from 1784 to 1653;
- Free State : a decrease of 152 (13,02%) from 1169 to 1017;
- North West : a decrease of 140 (12,06%) from 1159 to 1019; and
- Northern Cape: a decrease of 150 (33.64%) from 446 to 296.

Increases in fatalities were recorded in the following three provinces:

- Gauteng: an increase of 536 (24.60%) from 2181 to 2717;
- Mpumalanga : an increase of 46 (2.91%) from 1591 to 1637; and
- Limpopo: an increase of 148 (9.71%) from 1,528 to 1,676.

The national monthly number of fatalities per month over the 12-month period are given in table 27 and graphically reflected in figure 27.

**Table 27: Number of Fatalities per month**

Months	2010	2011	Change	% change
January	971	871	-100	-10.29
February	1,015	985	-30	-2.94
March	1,088	1,055	-33	-3.06
April	1,099	1,248	149	13.53
May	1,179	1,103	-76	-6.42
June	1,174	1,197	23	1.97
July	1,322	1,325	3	0.26
August	1,213	1,024	-189	-15.57
September	1,282	1,333	51	3.98
October	1,177	1,193	16	1.35
November	1,083	1,105	22	2.07
December	1,365	1,515	150	10.96
<b>Total</b>	<b>13,967</b>	<b>13,954</b>	<b>-13</b>	<b>-0.09</b>

**Source: South African Police Service and Road Traffic Management Corporation**

The figures given in the table above and reflected in the graph below show that the months with the highest number of fatalities during 2011 were the following:

- April : 1248 fatalities, 149 more than April 2010;
- July : 1325 fatalities, 3 more than July 2010;
- September : 1333 fatalities, 51 more than September 2010; and
- December: 1515 fatalities; 150 more than December 2010.

**Figure 27: Number of fatalities per month**



The percentage change in the number of fatal crashes and fatalities over the 12 month period from 1 January to 31 December for 2011 in comparison with the same period during 2010 per province is reflected in figure 28 extracted from tables 23 and 26.

**Figure 28: Percentage change in Crashes and Fatalities**



Figure 28 above indicates that there is a significant increase in both fatal crashes and fatalities in Gauteng, and the highest decrease in both fatal crashes and fatalities were recorded in Northern Cape

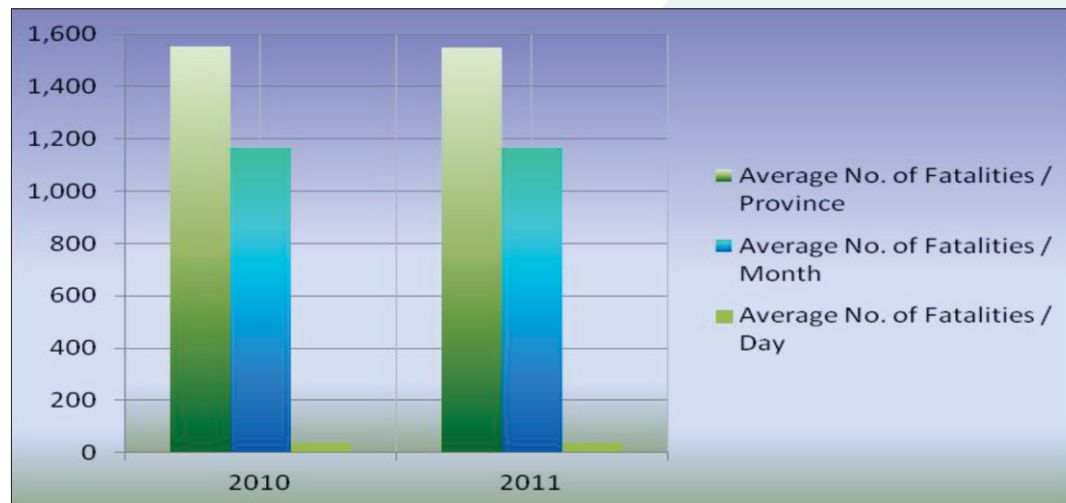
Table 28 and figure 29 shows the different averages of fatalities per province, per month and per day. The information shows that an average of 1552 fatalities were recorded per province during 2010 and 1550 during 2011. The average number of fatalities per day remains at 38 for both years.

**Table 28: Average number of Fatalities**

	2010	2011	Change	% Change
<b>Total number of fatalities</b>	13,967	13,954	-13	-0.09
<b>Average No. of Fatalities / Province</b>	1,552	1,550	-2	-0.13
<b>Average No. of Fatalities / Month</b>	1,164	1,163	-2	-0.17
<b>Average No. of Fatalities / Day</b>	38	38	0	0.00

**Source: South African Police Service and Road Traffic Management Corporation**

**Figure 29: Average number of fatalities: 2010-2011**



#### 4.3. Number of Fatalities per Road User Group

The information in Table 29 below shows that driver fatalities increased by 83 (2.03%) from 4106 in 2010 to 4189 in 2011. Passenger fatalities decreased by 466 (8.86%) from 5253 to 4787, and pedestrian fatalities increased by 369 (8.01%) from 4609 to 4978 over the 12month period from 1 January 2011 to 31 December 2011.



**Table 29 Number of Fatalities per Road User Group**

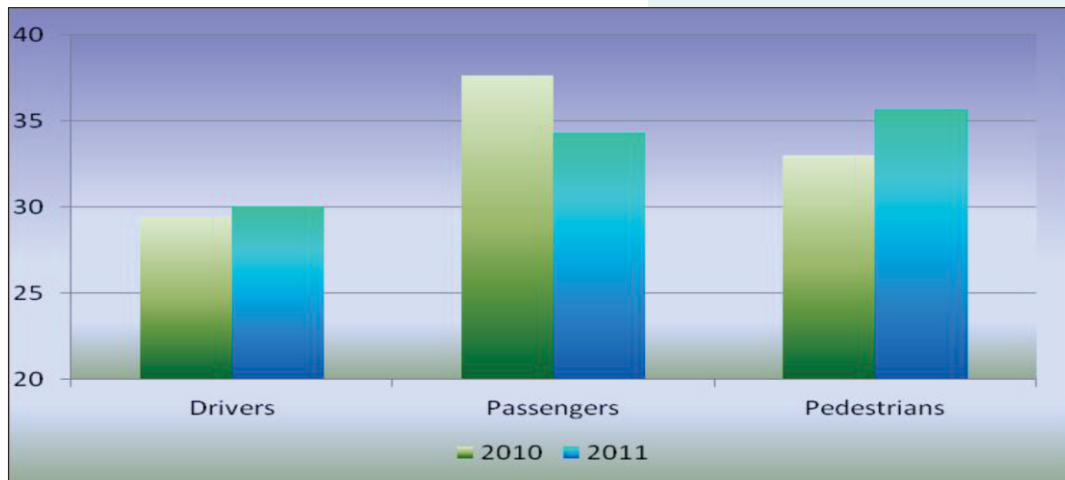
User Group	2010	% 2010	2011	%2011	Change	% change
Drivers	4,106	29,40	4,189	30,02	83	2.03
Passengers	5,253	37,60	4,787	34,31	-466	8.86
Pedestrians	4,609	33,00	4,978	35,67	369	8.01
<b>Total</b>	<b>13,967</b>	<b>100</b>	<b>13,954</b>	<b>100</b>	<b>-13</b>	<b>0.09</b>

**Source: South African Police Service and Road Traffic Management Corporation**

The percentage of fatalities per road user group for the two comparative years are reflected in figure 30 during 2010 and 2011.

- Driver fatalities were 29.40% and 30.02% respectively;
- Passengers 37.60% and 34.37%; and
- Pedestrians 33.00% and 35.67%.

The percentages above indicate a decrease in passenger and an increase in pedestrian fatalities from 2010 to 2011.

**Figure 30: Percentage fatalities per Road User Group: 2010-2011**

The percentage change in all fatalities per province is shown in table 30 below, reflecting an increase of 24.60% in Gauteng and a decrease of 33.64% in the Northern Cape.

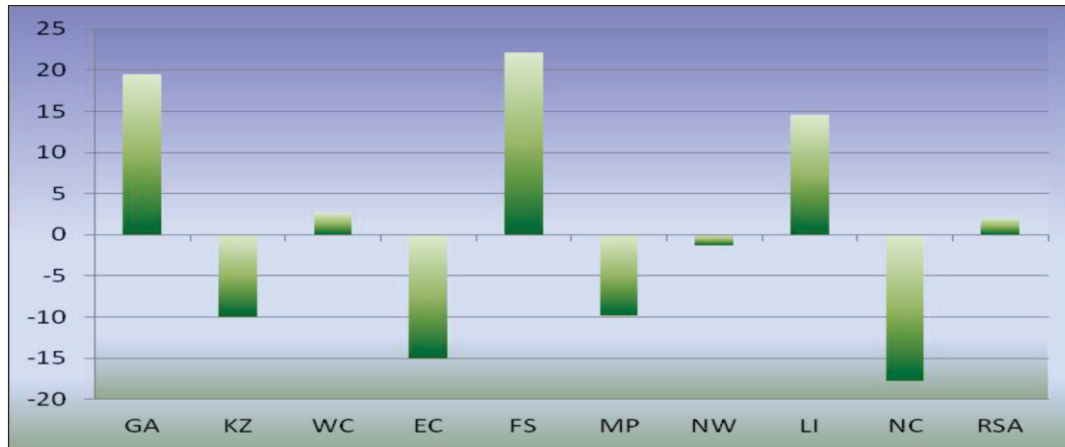
**Table 30: Number of Fatalities per Road User Group over 12 Month Period**

Year	User Group	GA	KZ	WC	EC	FS	MP	NW	LI	NC	RSA
2010	Drivers	747	712	383	429	376	540	378	414	128	4,106
	Passengers	441	890	493	846	560	655	459	652	256	5,253
	Pedestrians	993	1,186	447	509	233	395	321	462	62	4,609
	<b>Total</b>	<b>2,181</b>	<b>2,788</b>	<b>1,323</b>	<b>1,784</b>	<b>1,169</b>	<b>1,591</b>	<b>1,159</b>	<b>1,528</b>	<b>446</b>	<b>13,967</b>
2011	Drivers	892	641	393	365	459	487	373	474	105	4,189
	Passengers	698	863	285	614	351	752	331	769	124	4,787
	Pedestrians	1,127	1,248	509	674	207	398	315	433	67	4,978
	<b>Total</b>	<b>2,717</b>	<b>2,752</b>	<b>1,187</b>	<b>1,653</b>	<b>1,017</b>	<b>1,637</b>	<b>1,019</b>	<b>1,676</b>	<b>296</b>	<b>13,954</b>
Change	Drivers	145	-71	10	-64	83	-53	-5	60	-23	83
	Passengers	257	-27	-208	-232	-209	97	-128	117	-132	-466
	Pedestrians	134	62	62	165	-26	3	-6	-29	5	369
	<b>Total</b>	<b>5.36</b>	<b>-36</b>	<b>-136</b>	<b>-131</b>	<b>-152</b>	<b>46</b>	<b>-140</b>	<b>148</b>	<b>-150</b>	<b>-13</b>
% change	Drivers	19.45	-9.99	2.64	-14.92	22.16	-9.80	-1.34	14.62	-17.77	2.03
	Passengers	58.45	-2.98	-42.16	-27.46	-37.35	14.72	-27.94	17.87	-51.53	-8.86
	Pedestrians	13.46	5.23	13.90	32.47	-11.24	0.68	-1.97	-6.21	7.22	8.01
	<b>Total</b>	<b>24.60</b>	<b>-1.28</b>	<b>-10.25</b>	<b>-7.36</b>	<b>-13.02</b>	<b>2.91</b>	<b>-12.06</b>	<b>9.71</b>	<b>-33.64</b>	<b>-0.09</b>

**Figure 31: Percentage Change in all fatalities:2010-2011**



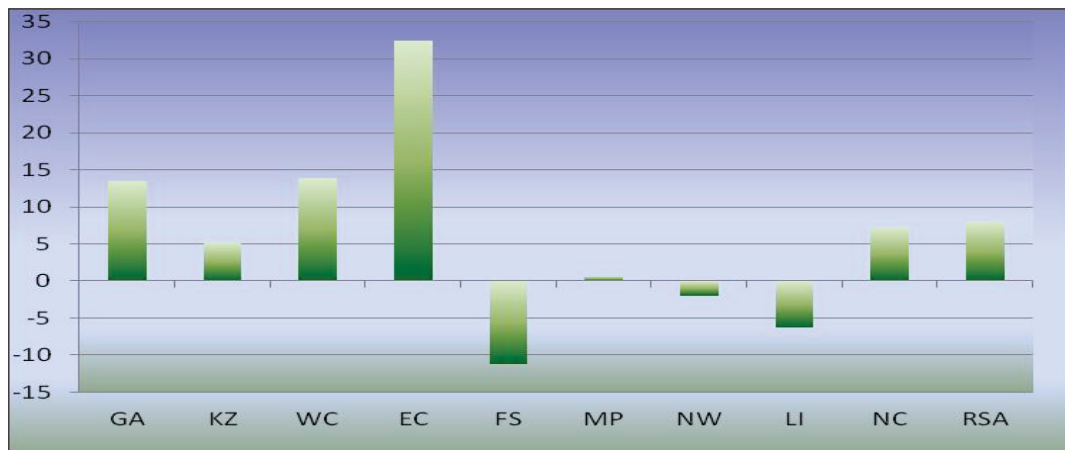
The percentage (%) changes in all fatalities per specific road user group from 2010 to 2011 per province are also reflected in figure 31 above.

**Figure 32: Percentage Change in driver fatalities:2010-2011**

The information in figure 32 on driver fatalities shows that the biggest increase in the number of driver fatalities was recorded in the Free State with 22,16%, followed by Gauteng with an increase of 19,45%. The biggest decrease in driver fatalities was recorded in the Northern Cape (17.77%).

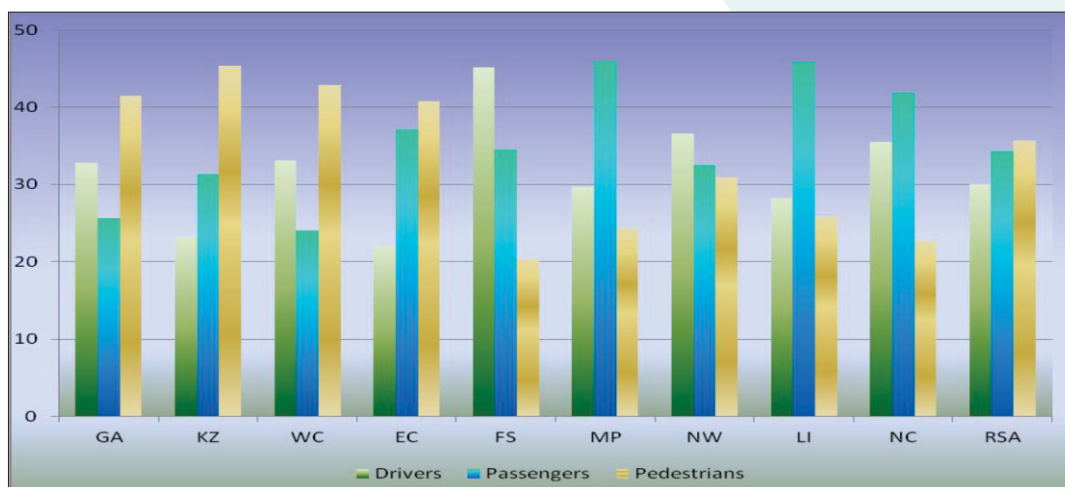
**Figure 33: Percentage Change in passenger fatalities:2010-2011**

The information in figure 33 above on the change in passenger fatalities shows that the biggest increase in the number of passenger fatalities was recorded in Gauteng with an increase of 58,45%, followed by Limpopo with an increase of 17,87%. The biggest decrease was recorded in the Northern Cape with a decrease of 51, 53 %, followed by the Western Cape with a decrease of 42, 16% and the Free State with a decrease of 37, 35%.

**Figure 34: Percentage Change in pedestrian fatalities:2011**

The information in figure 34 shows that, on a percentage basis, the biggest increase in the number of pedestrian fatalities was recorded in the Eastern Cape with an increase of 32,47% followed by the Western Cape with 13,90% and Gauteng with 13,46%. A decrease of 11,24% in pedestrian fatalities was recorded in the Free State and 6, 21% in Limpopo.

The combined percentages of road user group fatalities (drivers, passengers and pedestrians) per province for 2011 is also reflected in figure 35.

**Figure 35: Percentage fatalities per road user group: 2011**

The information in figure 35 shows that in Gauteng, KwaZulu-Natal the Western Cape and the Eastern Cape, the main fatality groups were pedestrians – varying between 40,77% and 45,35% of all fatalities. Driver fatalities were prominent in the Free State (45,13%) and in North West (36,60%). In the remaining three provinces passenger fatalities were the highest, namely 45,94% in Mpumalanga; 45,88% in Limpopo and 41,89% in the Northern Cape.

More detail on the number of fatalities per road user group per month per province for 2010 and 2011 is given in the table attached under **Annexure F-1**.

#### 4.4. Severity Of Fatal Crashes

The severity of fatal crashes decreased by 0, 05 (3, 57%) from 1, 29 during 2010 to 1, 24 during 2011. The individual provincial severity rates are shown in Table 31.

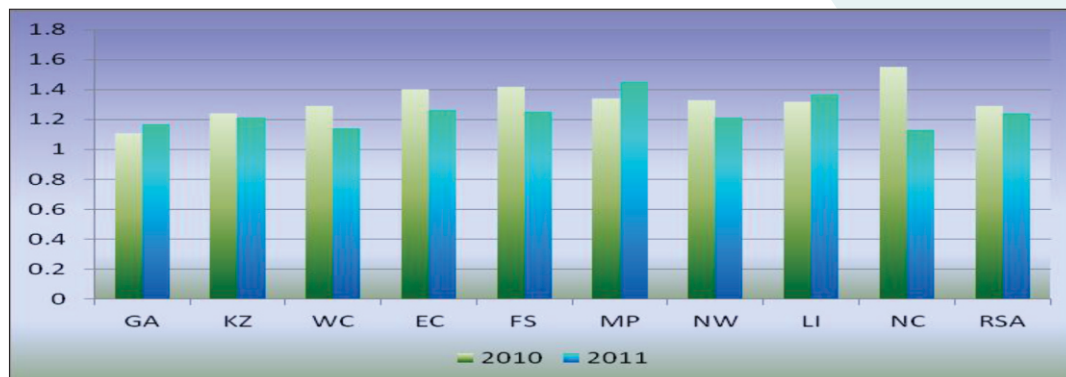
**Table 31: Crash severity (persons killed/Crash)**

Year	GA	KZ	WC	EC	FS	MP	NW	LI	NC	RSA
2010	1.11	1.24	1.29	1.40	1.42	1.34	1.33	1.32	1.55	1.29
2011	1.17	1.21	1.14	1.26	1.25	1.45	1.21	1.37	1.13	1.24
Change	0.06	-0.03	-0.14	-0.14	-0.17	0.11	-0.13	0.05	-0.42	-0.05
% change	5.17	-2.66	-11.11	-10.18	-11.95	8.00	-9.45	3.98	-27.05	-3.57

**Source: South African Police Service and Road Traffic Management Corporation**

The information in table 25 shows that the largest decrease in the severity rate was in the Northern Cape, where the rate decreased by 0.42 (27.05%) from 1.55 to 1.13; followed by the Free State with a decrease of 11.95%. The rates increased in: Gauteng, (5.17%); Mpumalanga, (8.00%) and Limpopo 3.98%. The provincial rates for the two comparative years in this regard are also reflected in figure 36.

**Figure 36: Crash Severity (persons killed/crash) per province:2010-2011**



The severity rate per month is given in Table 32 and also reflected figure 37.

**Table 32: Monthly crash severity**

Month	2010	2011	Change	% change
January	1.24	1.16	-0.08	-6.47
February	1.35	1.28	-0.07	-5.08
March	1.34	1.26	-0.08	-5.73
April	1.32	1.25	-0.07	-5.50
May	1.29	1.16	-0.12	-9.49
June	1.32	1.27	-0.06	-4.18
July	1.35	1.18	-0.18	-13.09
August	1.29	1.15	-0.14	-10.94
September	1.29	1.31	0.02	1.33
October	1.21	1.19	-0.02	-1.48
November	1.23	1.30	0.07	5.67
December	1.27	1.40	0.14	10.75
<b>RSA</b>	<b>1.29</b>	<b>1.24</b>	<b>-0.05</b>	<b>-3.57</b>

**Figure 37: Crash Severity (persons killed/crash) per month**

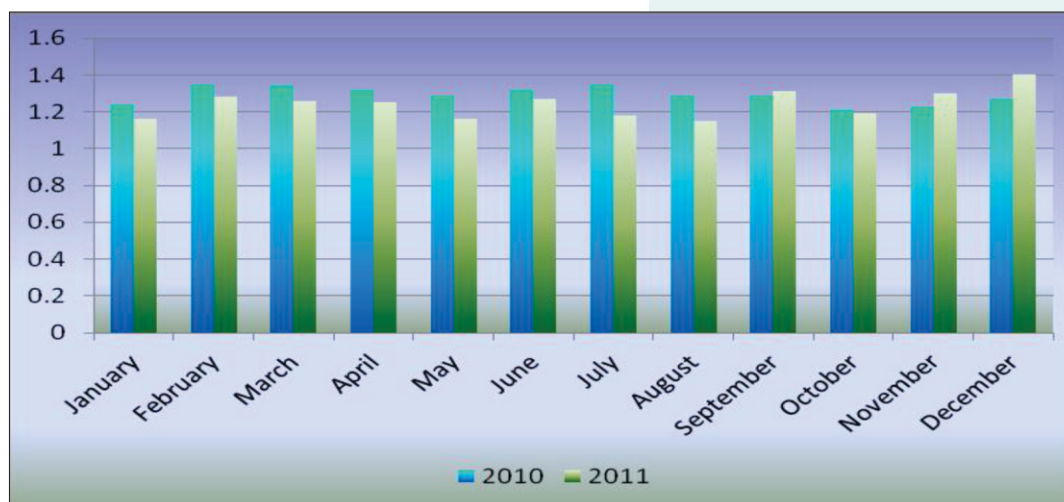


Figure 37 shows that the months during 2011 with the highest severity rates were September with a rate of 1.31; November with a 1.30 rate and December with a rate of 1.40. (These high rates could be attributed to a large number of high occupancy vehicles, buses and minibuses, involved in fatal crashes).

The biggest rate increase was recorded in December 2011 with an increase of 10, 75%. The biggest decrease was recorded for July (13, 09%) when the rate decreased from 1, 35 in 2010 to a rate of 1,18 in 2011.

#### 4.5. Crash and Fatality Rates and Trends per 10 000 Vehicles

The number of fatal crashes per 10 000 registered motorised vehicles decreased by 0.02 (0.18%) from 12.29 during 2010 to 12.27 during 2011. Provincial detail in this regard is given in Table 33 and graphically reflected in figure 38.

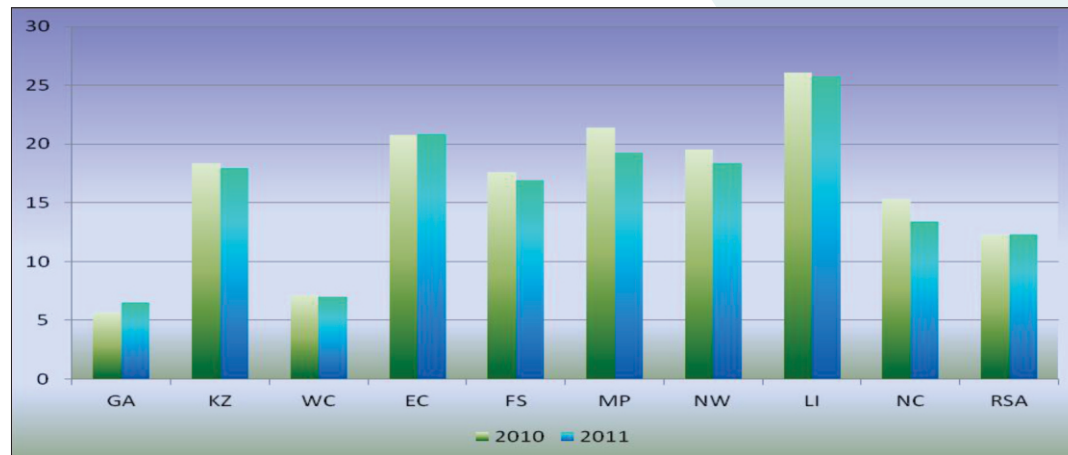
**Table 33 : Number of Fatal Crashes per 10 000 motorised vehicles per Province**

Year	GA	KZ	WC	EC	FS	MP	NW	LI	NC	RSA
<b>2010</b>	5.71	18.34	7.11	20.76	17.64	21.40	19.51	26.07	15.32	<b>12.29</b>
<b>2011</b>	6.51	17.95	6.99	20.83	16.92	19.26	18.35	25.74	13.38	<b>12.27</b>
<b>Change</b>	0.80	-0.39	-0.13	0.07	-0.72	-2.14	-1.16	-0.34	-1.94	<b>-0.02</b>
<b>% change</b>	14.05	-2.11	-1.78	0.34	-4.09	-9.99	-5.94	-1.29	-12.65	<b>-0.18</b>

**Source: South African Police Service and Road Traffic Management Corporation**

The figures in table 33 indicate that the highest rates in 2011 were recorded in Limpopo and the Eastern Cape with rates of 25.74 and 20.83 respectively.

**Figure 38: Crashes per 10 000 motorised vehicles per province**



With the exception of Gauteng and the Eastern Cape, all other provinces recorded decreases in this regard. In Gauteng the rate increased by 0.80 (14.05%) from 5.71 in 2010 to 6.51 in 2011. In the Eastern Cape the rate increased by 0.07 (0.34%) from 20.76 in 2010 to 20.83 in 2011.

On a provincial percentage basis the biggest decreases were recorded as follows:

- Northern Cape : 12,65%;
- Mpumalanga : 9,99%; and
- North West: 5, 94%.

The number of fatal crashes per 10000 registered motorised vehicles per month for the two respective years 2010 and 2011 are shown in table 28 and figure 39

**Table 34 : Number of Fatal Crashes per 10 000 motorised vehicles per month**

Month	2010	2011	Change	% change
January	0.91	0.85	-0.06	-6.54
February	0.87	0.87	-0.00	-0.44
March	0.93	0.94	0.00	0.06
April	0.96	1.12	0.16	16.83
May	1.06	1.06	0.00	0.05
June	1.02	1.05	0.03	2.91
July	1.12	1.25	0.13	11.47
August	1.08	0.99	-0.09	-8.29
September	1.13	1.12	-0.01	-1.02
October	1.11	1.10	-0.01	-0.85
November	1.00	0.93	-0.07	-6.94
December	1.22	1.18	-0.04	-3.48

Source: South African Police Service and Road Traffic Management Corporation

**Figure39: Crashes per 10 000 motorised vehicles per month**

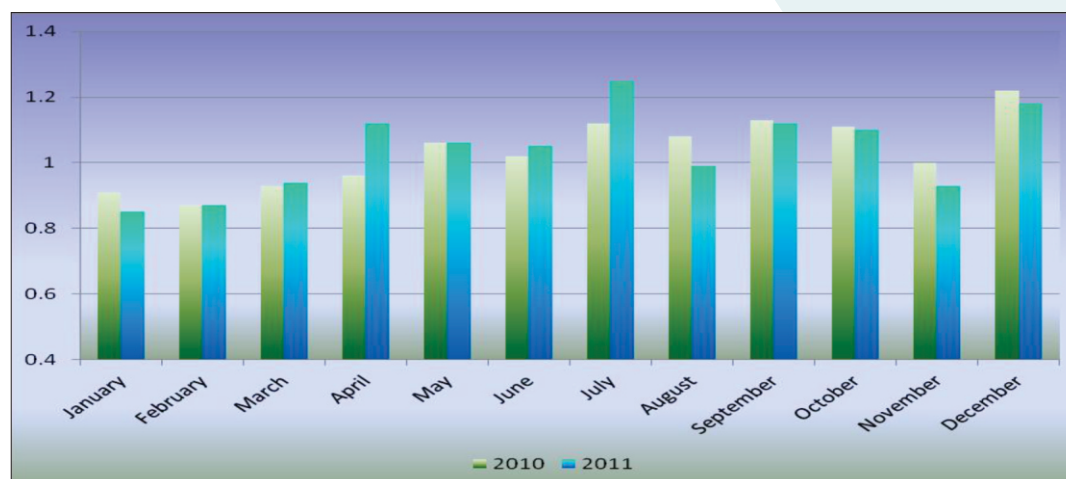


Figure 39 above shows that the number of crashes per 10 000 registered motorised vehicles decreased during the first 2 months and the last five months of 2011 in comparison with 2010. The biggest increases were recorded for the months of April and July 2011. The rate for April increased by 16, 83% from 0.96 to 1.12 and for July the rate increased by 11.47% from 1.12 to 1.25. The highest rate for 2011 was recorded for July.



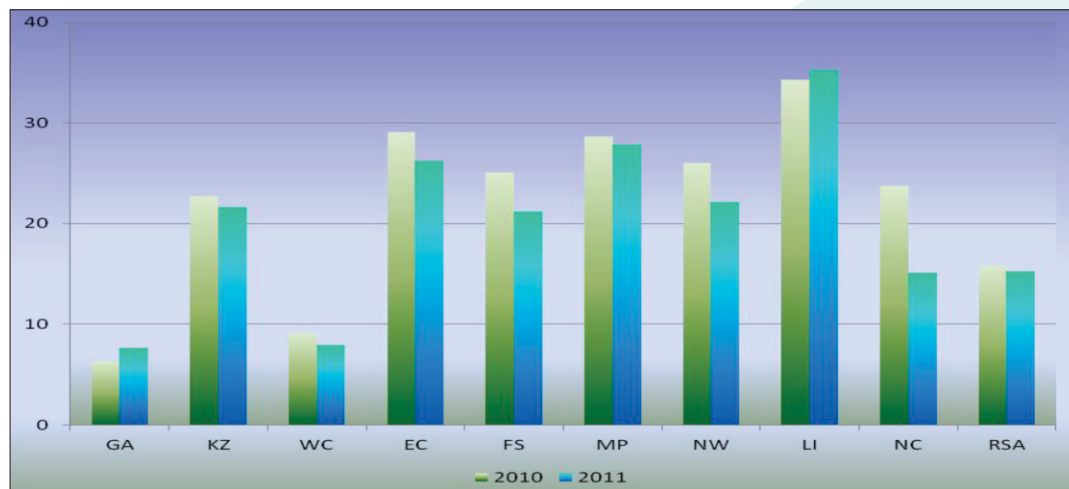
The number of fatalities per 10 000 registered motorised vehicles decreased by 0.59 (3.75%) from 15.84 during 2010 to 15.25 during 2011. Provincial detail in this regard is given in Table 35 and graphically reflected in figure 40.

**Table 35 : Number of Fatalities per 10 000 motorised vehicles per Province**

Year	GA	KZ	WC	EC	FS	MP	NW	LI	NC	RSA
2010	6.36	22.73	9.14	29.12	25.06	28.65	26.02	34.33	23.73	15.84
2011	7.62	21.66	7.98	26.25	21.16	27.85	22.16	35.24	15.12	15.25
Change	1.27	-1.07	-1.16	-2.88	-3.90	-0.80	-3.86	0.91	-8.61	-0.59
% change	19.95	-4.71	-12.69	-9.88	-15.55	-2.79	-14.84	2.64	-36.27	-3.75

Source: South African Police Service and Road Traffic Management Corporation

**Figure 40: Fatalities per 10 000 motorised vehicles per province**



With the exception of Gauteng and Limpopo, all other provinces recorded decreases in the number of fatalities per 10,000 vehicles. The biggest decrease were recorded as follows:

- Northern Cape : decreased by 8.61 (36.27%) from 23.73 to 15.12; and
- Free State: decreased by 3.90 (15.55%) from 25.06 to 21.6.

The highest increase were recorded as follows:

- Gauteng : rate increased by 1.27 (19.95%) from 6.36 to 7.62; and
- Limpopo: rate increased by 0.91 (2.64%) from 34.33 to 35.24.

The number of fatalities per 10,000 registered motorised vehicles per month for the two 12 month periods is shown in table 36 and figure 41.

**Table 36: Number of Fatalities per 10 000 motorised vehicles per month**

Month	2010	2011	Change	% change
January	1.12	0.98	-0.14	-12.59
February	1.17	1.11	-0.06	-5.49
March	1.25	1.18	-0.07	-5.67
April	1.26	1.39	0.13	10.40
May	1.36	1.23	-0.13	-9.44
June	1.35	1.33	-0.02	-1.40
July	1.52	1.47	-0.05	-3.12
August	1.39	1.13	-0.25	-18.33
September	1.46	1.47	0.00	0.30
October	1.34	1.31	-0.03	-2.32
November	1.23	1.21	-0.02	-1.67
December	1.55	1.66	0.11	6.90

Source: South African Police Service and Road Traffic Management Corporation

**Figure 41: Fatalities per 10 000 motorised vehicles per month**

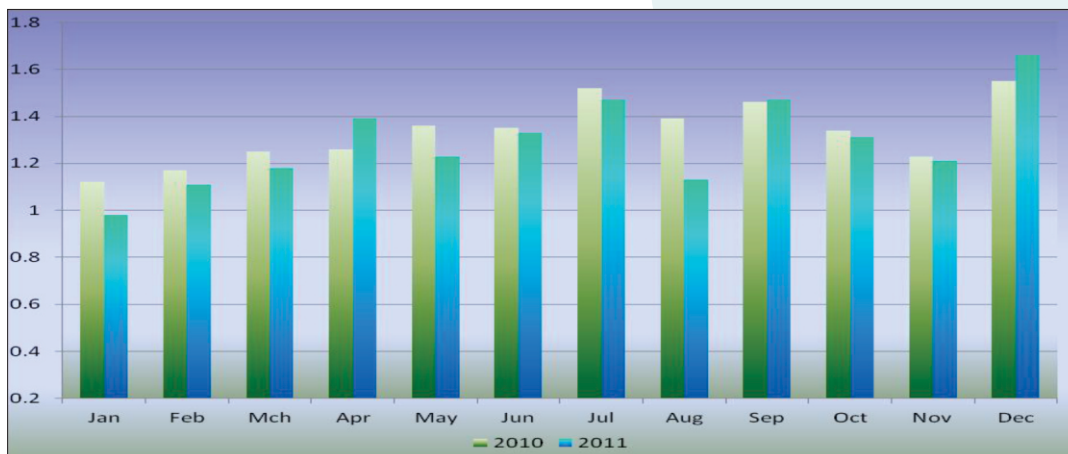


Figure 41 indicates increases in the number of fatalities per 10 000 motorised vehicles for the months of April, September and December. On a percentage basis, April experienced the biggest increase in the order of 10.40%, from a rate of 1.26 to 1.39.

The months with the highest rates during 2011 were the following :

- April, with a rate of 1.39;
- July, with a rate of 1.47;
- September, with a rate of 1.47; and
- December, with a rate of 1.66.

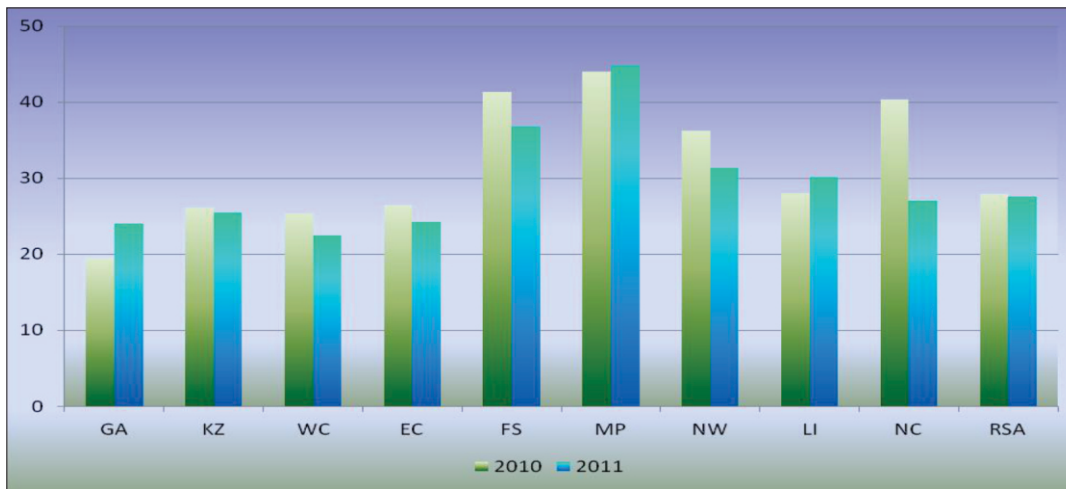
#### 4.6. Number of Fatalities per 100 000 Human Population

The national number of fatalities per 100000 human population decreased by 0.36 (1.27%) from 27.94 during 2010 to 27.58 during 2011. Provincial detail in this regard is given in Table 37 and schematically reflected in figure 42 below:

**Table 37: Number of Fatalities per 100 000 human population per Province**

Year	GA	KZ	WC	EC	FS	MP	NW	LI	NC	RSA
2010	19.48	26.19	25.32	26.46	41.40	43.97	36.20	28.08	40.40	27.94
2011	23.98	25.44	22.45	24.20	36.85	44.76	31.32	30.17	26.99	27.58
Change	4.50	-0.75	-2.87	-2.26	-4.54	0.79	-4.88	2.09	-13.41	-0.36
% change	23.10	-2.86	-11.33	-8.53	-10.98	1.80	-13.48	7.44	-33.20	-1.27

**Source: South African Police Service and Road Traffic Management Corporation**

**Figure 42: Fatalities per 100 000 human population per province**

With the exception of Gauteng, Mpumalanga and Limpopo, all provinces recorded decreases in this regard. On a provincial percentage basis the biggest increases were recorded as follows:

- Gauteng : an increase of 4.50 (23.10%) from 19.48 to a rate of 23.98;
- Mpumalanga : an increase of 0.79 (1.80%) from 43.97 to a rate of 44.76; and
- Limpopo: an increase of 2.09 (7.44%) from 28.08 to a rate of 30.17.

The biggest decreases per province were as follows :

- Northern Cape : a decrease of 33.20% to a rate of 26.99;
- North West : a decrease of 13.48% to a rate of 31.32;
- Western Cape : a decrease of 11.33% to a rate of 22.45; and
- Free State: a decrease of 10.98% to a rate of 36.85.

The provinces with the highest recorded rates during 2011 in terms of number of fatalities per 100000 human population were the following :

- Mpumalanga : rate of 44.76;
- Free State : rate of 36.85;
- North West : rate of 31.32; and
- Limpopo : rate of 30.17.

## 5. Fatal Crashes per Day-of-Week & Time-of-Day

### 5.1. Fatal Crashes per Day of Week

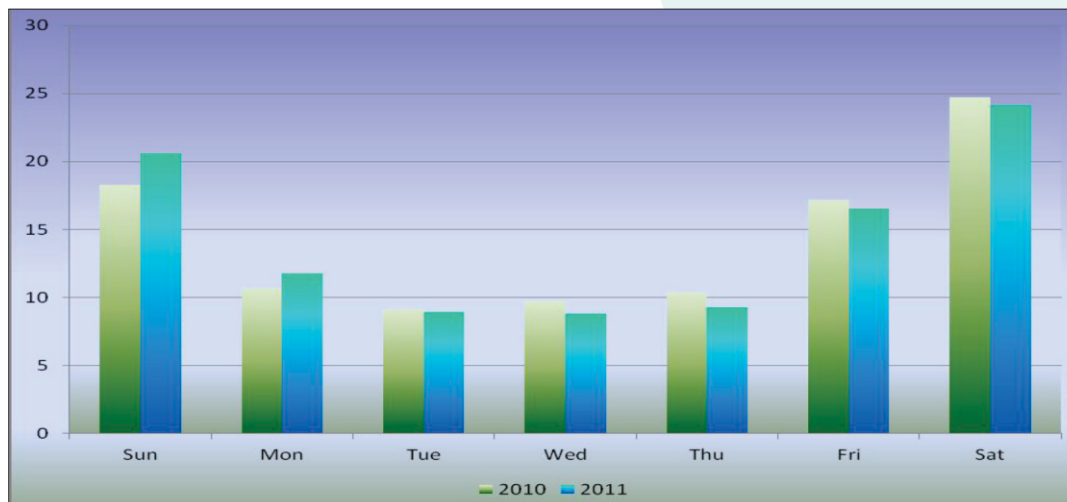
The percentage of fatal crashes per day of the week for 2010 and 2011 is given in Table 38 and graphically reflected in figure 43.

**Table 38: Percentage of fatal crashes per day of week for 2010-2011**

Year	Sun	Mon	Tue	Wed	Thu	Fri	Sat
2010	18.26	10.66	9.14	9.71	10.36	17.15	24.72
2011	20.60	11.74	8.94	8.80	9.25	16.51	24.16
Change	2.34	1.08	-0.20	-0.91	-1.11	-0.64	-0.56

Source: South African Police Service and Road Traffic Management Corporation

**Figure 43: Percentage of crashes per day of week for 2010 - 2011**

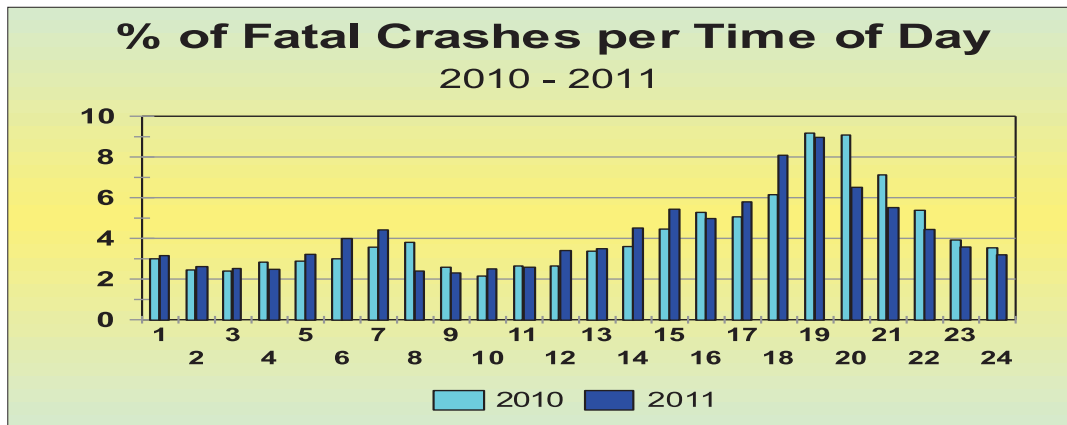


The information in figure 43 shows that during 2011 almost one quarter (24.16%) of the weekly crashes happened on a Saturday, and 61.27% of all weekly fatal crashes happened over weekends from Friday to Sunday. The graph above reflects the comparison of day-of-week crashes between 2010 and 2011 which indicates, amongst others, an increase in crashes that happened on Sundays and Mondays, 2.34% and 1.08% respectively. Slight decreases were recorded in crashes that happened on Fridays and Saturdays, which were 0, 64% and 0, 56% respectively.

## 5.2. Number of Crashes per Time of Day

The percentage of fatal crashes per time of day during 2010 and 2011 is reflected in figure 44.

**Figure 44: Percentage of fatal crashes per time of day 2010-2011**



The information in figure 44 shows that:

On a daily average the highest number of fatal crashes during the morning happens between 05:00 and 08:00 (3.99% of daily total). The percentages for these hours increased from 2010 by 1.00% and 0.85% respectively.

The highest number of fatal crashes in the afternoon and evening happens between 17:00 and 22:00 (8.09% of daily total); 18:00 and 19:00 (8.96% of daily total) and between 19:00 and 20:00 (6.51% of daily total).

The 6-hour grouped number of crashes per day is shown in table 39 below:

**Table 39: Percentage of crashes per time of day for 2010-2011**

Year	00:00 - 06:00	06:00 - 12:00	12:00 - 18:00	18:00 - 24:00
2010	16.54	17.38	27.89	38.19
2011	17.97	17.57	32.28	32.18
Change	1.43	0.19	4.39	-6.01

**Source: South African Police Service and Road Traffic Management Corporation**

The above information shows the following percentage of crashes for the respective grouped hours of the day during 2011 and the percent change from 2010:

- From 00:00 to 06:00 : 17.97%, increased by 1.43%;
- From 06:00 to 12:00 : 17.57%, increased by 0.19%;
- From 12:00 to 18:00 : 32.28%, increased by 4.39%; and
- From 18:00 to 00:00 : 32.18%, decreased by 6.01%.

### 5.3. Fatalities per Age Group and Gender

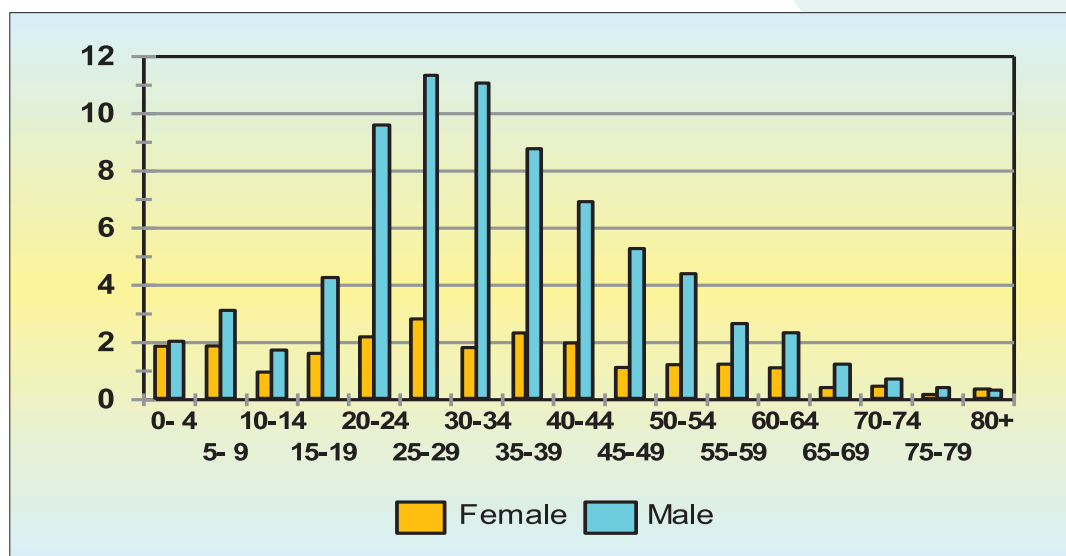
The percentage of fatalities per age group and gender for the year 2011 (only for the cases where this information is available) are given in Table 40 and reflected in figure 41.

**Table 40: Percentage Road User Fatalities per Age and Gender Groups**

Age group	Driver		Passenger		Pedestrian		Total		Total
	Female	Male	Female	Male	Female	Male	Female	Male	
0-4	0.00	0.00	2.55	1.88	2.89	4.03	1.87	2.04	3.91
5-9	0.08	0.00	1.67	2.93	3.70	6.13	1.88	3.13	5.00
10-14	0.00	0.81	1.18	1.57	1.61	2.74	0.96	1.74	2.70
15-19	0.00	2.72	3.14	5.13	1.61	4.84	1.62	4.27	5.90
20-24	0.65	9.28	5.01	9.84	0.87	9.68	2.20	9.61	11.81
25-29	0.65	13.42	5.60	10.47	2.08	10.32	2.82	11.34	14.16
30-34	0.57	15.13	3.34	9.42	1.48	9.03	1.82	11.07	12.90
35-39	1.22	12.61	3.34	7.95	2.35	6.13	2.33	8.78	11.11
40-44	0.73	10.59	3.34	4.19	1.81	6.29	1.99	6.93	8.92
45-49	0.33	9.28	2.06	2.20	0.94	4.68	1.13	5.28	6.41
50-54	0.57	8.17	1.57	1.88	1.48	3.47	1.23	4.41	5.63
55-59	0.41	4.54	2.26	1.26	1.01	2.34	1.24	2.66	3.90
60-64	0.57	3.43	1.96	1.26	0.81	2.42	1.12	2.34	3.47
65-69	0.24	1.51	0.39	0.63	0.60	1.61	0.42	1.25	1.67
70-74	0.08	1.21	0.69	0.10	0.60	0.89	0.47	0.72	1.19
75-79	0.00	0.61	0.39	0.21	0.13	0.48	0.18	0.43	0.61
80+	0.08	0.50	0.49	0.10	0.54	0.40	0.38	0.33	0.71
<b>Total</b>	<b>6.19</b>	<b>93.81</b>	<b>38.98</b>	<b>61.02</b>	<b>24.53</b>	<b>75.47</b>	<b>23.66</b>	<b>76.34</b>	<b>100.00</b>

Source: Road Traffic Management Corporation

**Figure 45: Percentage Road User Fatalities per Age Groups per Gender**



Source: Road Traffic Management Corporation

The above information shows that in the order of 76.34% fatalities during 2011 were male and 23.66% females. 93.81% of all drivers killed in crashes were male and 6.19% female.

## 6. Major Crashes Investigated

### 6.1 Number of major crashes

The information below shows that there were one hundred and thirty-four (134) major crashes that were investigated by the Corporation for the period 1 of January to 31 December 2011. The abovementioned major crashes refer to crashes that meet the following criteria, as set by the Corporation:

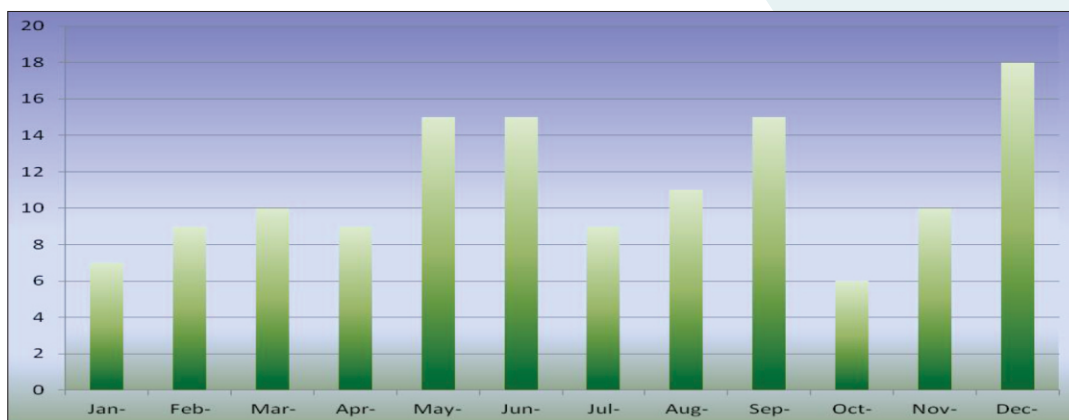
- Crashes in which five (5) or more persons are killed;
- Fatal crashes in which four (4) or more vehicles are involved;
- Fatal crashes in which vehicles carrying hazardous substances are involved; or
- Any high profile crash that the Corporation feels necessary to investigate.

Table 41 and figure 46 below show the number of major crashes investigated per month, with December having had the most major crash investigations that accounted to 18, followed by 15 crashes per month in May, June, August and September. .

**Table 41: Number and Percentage Contribution of Major Crashes per month: 2011**

Month	Jan	Feb	Mar	Apr	May	Jun	Jul	Aug	Sep	Oct	Nov	Dec	Totals
Number of Crashes	7	9	10	9	15	15	9	11	15	6	10	18	134
% Contribution per Month	5%	7%	7%	7%	11%	11%	7%	8%	11%	4%	7%	13%	100%

**Figure 46: Number Contribution of Major Crashes per month**

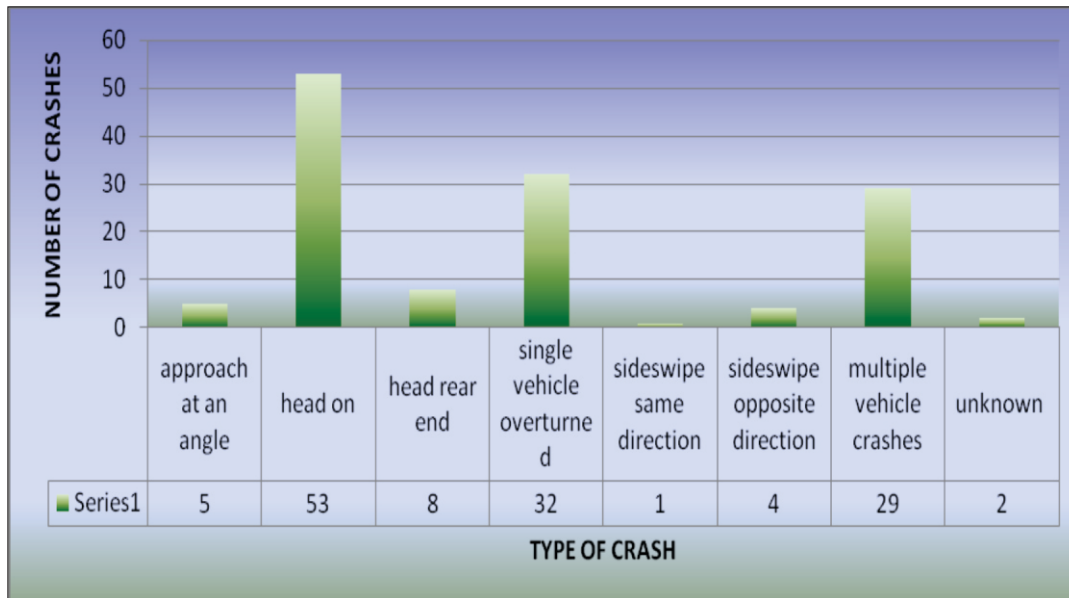




## 6.2 Crash Types

Figure 47 shows the crash types with most major crashes occurring as a result of head on collision and single vehicle overturned.

**Figure 47: Type of Crash**

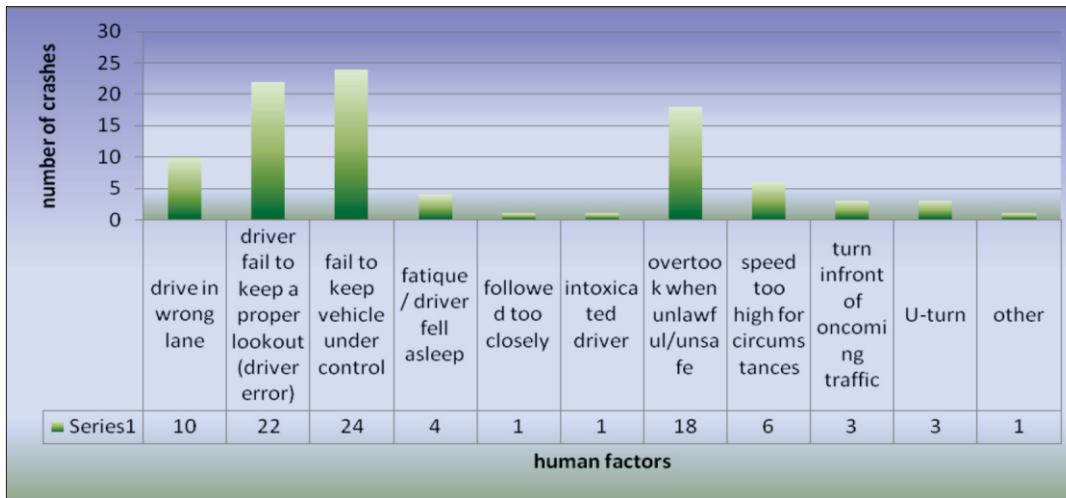


## 6.3 . Contributory Factors

All crashes are known to have happened due to several contributory factors, and these have been grouped according to three things that are involved during a vehicle’s travel on the road: human, vehicle and road environment. These factors were taken into consideration during the investigation in order to provide a clearer picture of causes of crashes.

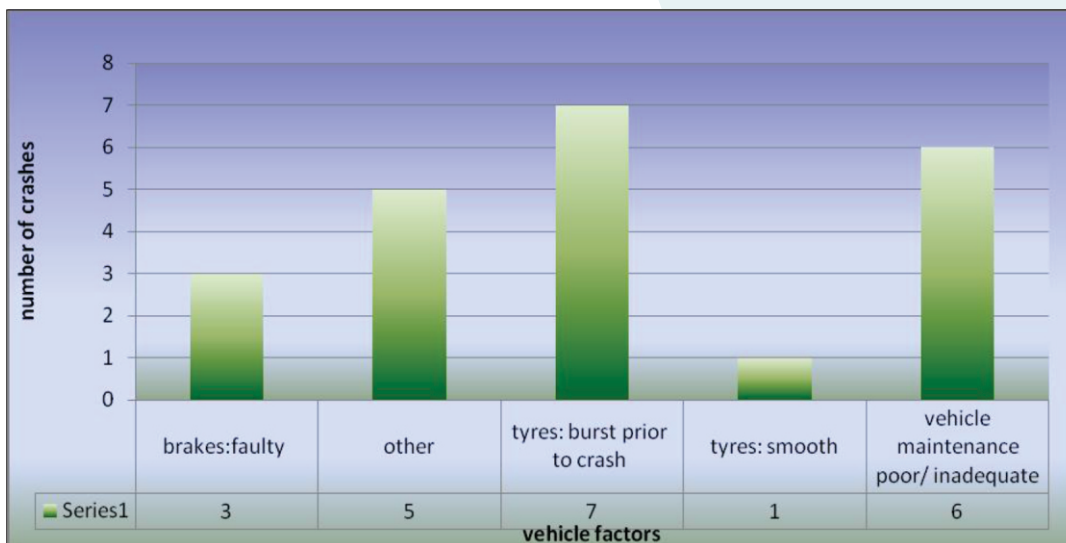
### 6.3.1. Human Factor

Figure 48 shows 93 crashes in which human behaviour was found to be part, if not the major, of the contributory factors that led to a crash occurring. The main human contributory factor was found to be the failure or inability of the drivers to control the vehicles, closely followed by the drivers’ failure to keep a proper lookout, and the third one being drivers’ illegally overtaking other vehicles.

**Figure 48: Contributory Human Factors**

### 6.3.2. Vehicle Factor

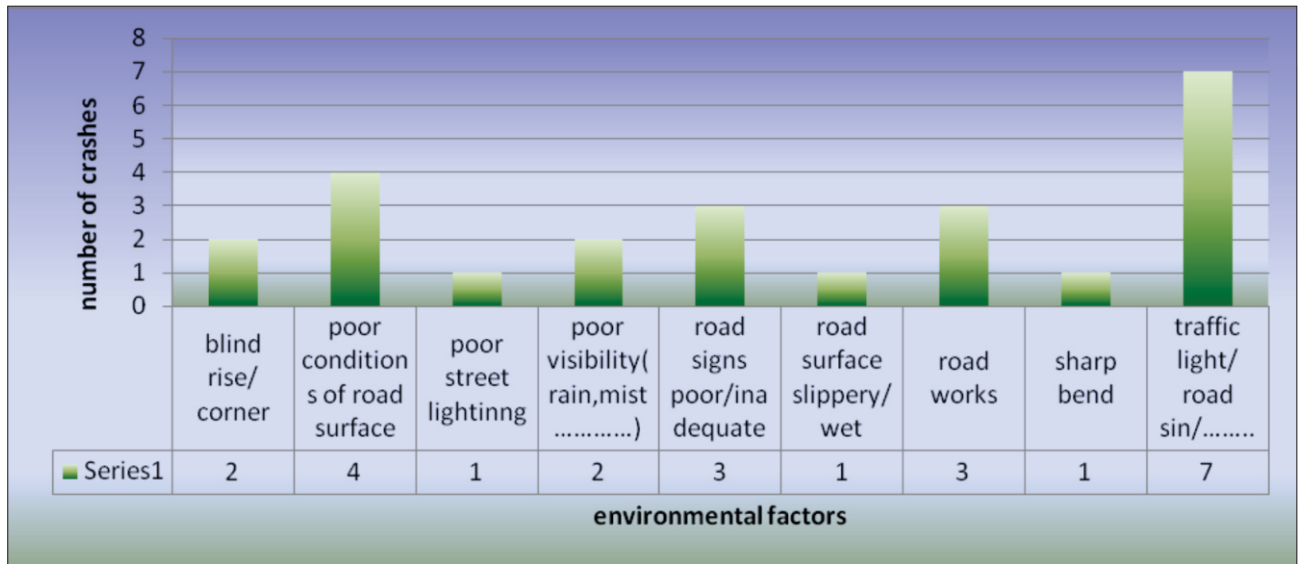
Figure 49 show that there were 22 crashes in which the vehicle(s) involved had defects that contributed to the occurrence of a crash. Tyre burst was found to be leading, followed by poor or inadequate maintenance of a vehicle and a combination of other vehicle factors.

**Figure 49: Contributory Vehicle Factors**

### 6.3.3. Road Factor

The road and/or the environment were found to have contributed to the occurrence of 24 crashes. Figure 50 shows that the leading factor to that regard was found to be related to the road infrastructure such as traffic lights or road signage, followed by poor road surface conditions and equally by poor or inadequate road signage and road works.

**Figure 50: Contributory Environment Factors**



**ANNEXURES**

<b>A</b>	Number of registered vehicles per province	<b>ii</b>
<b>B-1</b>	Number of unroadworthy vehicles	<b>iii</b>
<b>B-2</b>	Number of unlicensed vehicles	<b>iv</b>
<b>B-3</b>	Number of unroadworthy and unlicensed vehicles	<b>v</b>
<b>C-1</b>	Number of learner's licences issued	<b>vi</b>
<b>C-2</b>	Number of driver's licences issued	<b>vii</b>
<b>C-3</b>	Number of PrDPs issued	<b>viii</b>
<b>D</b>	Monthly number of fatal crashes per province	<b>ix</b>
<b>E</b>	Monthly number of fatalities per province	<b>x</b>
<b>F</b>	Number of road user group fatalities per province	<b>xi</b>

## Annexure A (Number of Registered Vehicles)

Dec 2010	Number of Registered Vehicles per Province									Total RSA
	GA	KZ	WC	EC	FS	MP	NW	LI	NC	
<b>Motorised Vehicles</b>										
Motorcars	2,357,660	772,648	992,656	359,842	260,573	299,306	242,864	215,194	95,600	<b>5,596,343</b>
Minibuses	111,934	45,253	35,024	21,186	12,196	20,366	16,914	19,226	3,884	<b>285,983</b>
Buses	16,228	6,803	5,061	3,856	2,093	4,739	3,138	4,198	1,225	<b>47,341</b>
Motorcycles	130,168	31,224	72,739	22,931	19,942	18,613	14,766	9,269	7,623	<b>327,275</b>
LDV's - Bakkies	651,811	288,439	273,256	166,616	112,667	159,400	124,339	161,710	62,589	<b>2,000,827</b>
Trucks	123,995	50,209	34,429	24,023	19,665	26,401	17,157	20,179	8,939	<b>324,997</b>
Other & Unkwn	38,574	31,855	33,634	14,255	39,494	26,392	26,130	15,141	8,125	<b>233,600</b>
<b>Sub-Total</b>	<b>3,430,370</b>	<b>1,226,431</b>	<b>1,446,799</b>	<b>612,709</b>	<b>466,630</b>	<b>555,217</b>	<b>445,308</b>	<b>444,917</b>	<b>187,985</b>	<b>8,816,366</b>
<b>Towed Vehicles</b>										
Caravans	41,468	8,481	16,448	5,687	8,059	9,941	6,997	5,198	2,972	<b>105,251</b>
Heavy Trailers	51,799	25,609	12,225	10,143	14,111	15,619	9,828	6,528	4,634	<b>150,496</b>
Light Trailers	290,903	72,186	116,980	47,789	57,206	52,759	46,375	32,852	23,393	<b>740,443</b>
Unknown	2,751	1,610	2,333	1,269	2,092	2,182	2,584	1,348	676	<b>16,845</b>
<b>Sub-Total</b>	<b>386,921</b>	<b>107,886</b>	<b>147,986</b>	<b>64,888</b>	<b>81,468</b>	<b>80,501</b>	<b>65,784</b>	<b>45,926</b>	<b>31,675</b>	<b>1,013,035</b>
<b>All Vehicles</b>	<b>3,817,291</b>	<b>1,334,316</b>	<b>1,594,785</b>	<b>677,597</b>	<b>548,098</b>	<b>635,718</b>	<b>511,092</b>	<b>490,843</b>	<b>219,660</b>	<b>9,829,400</b>
<b>Dec 2011</b>										
Dec 2011	Number of Registered Vehicles per Province									Total RSA
	GA	KZ	WC	EC	FS	MP	NW	LI	NC	
<b>Motorised Vehicles</b>										
Motorcars	2,454,845	803,715	1,024,987	372,898	270,198	318,766	252,859	233,869	99,941	<b>5,832,078</b>
Minibuses	110,763	46,320	33,887	20,688	11,932	20,732	16,617	19,279	3,966	<b>284,184</b>
Buses	16,779	6,753	5,329	3,700	2,266	5,320	3,260	4,533	1,313	<b>49,253</b>
Motorcycles	136,109	32,346	75,869	23,296	20,327	19,313	15,016	9,672	7,965	<b>339,913</b>
LDV's - Bakkies	677,470	298,431	277,560	171,219	116,368	167,972	128,562	171,766	65,015	<b>2,074,363</b>
Trucks	127,840	50,678	35,450	23,196	19,941	28,713	17,313	20,911	9,203	<b>333,245</b>
Other & Unkwn	39,622	32,398	34,222	14,828	39,598	26,973	26,203	15,559	8,368	<b>237,769</b>
<b>Sub-Total</b>	<b>3,563,428</b>	<b>1,270,641</b>	<b>1,487,304</b>	<b>629,825</b>	<b>480,630</b>	<b>587,789</b>	<b>459,830</b>	<b>475,589</b>	<b>195,771</b>	<b>9,150,805</b>
<b>Towed Vehicles</b>										
Caravans	41,091	8,354	16,564	5,616	7,967	10,034	6,904	5,295	3,000	<b>104,825</b>
Heavy Trailers	53,554	26,504	13,874	9,054	14,628	17,385	10,414	6,706	5,021	<b>157,140</b>
Light Trailers	299,256	74,565	120,696	49,030	58,284	55,112	47,710	34,497	24,311	<b>763,461</b>
Unknown	2,750	1,657	2,286	1,296	2,085	2,161	2,544	1,366	676	<b>16,819</b>
<b>Sub-Total</b>	<b>396,651</b>	<b>111,080</b>	<b>153,420</b>	<b>64,996</b>	<b>82,964</b>	<b>84,692</b>	<b>67,572</b>	<b>47,864</b>	<b>33,008</b>	<b>1,042,245</b>
<b>All Vehicles</b>	<b>3,960,078</b>	<b>1,381,721</b>	<b>1,640,723</b>	<b>694,821</b>	<b>563,594</b>	<b>672,481</b>	<b>527,402</b>	<b>523,452</b>	<b>228,778</b>	<b>10,193,050</b>
<b>% Change 2010-2011</b>										
% Change 2010-2011	Number of Registered Vehicles per Province									Total RSA
	GA	KZ	WC	EC	FS	MP	NW	LI	NC	
<b>Motorised Vehicles</b>										
Motorcars	4.12	4.02	3.26	3.63	3.69	6.50	4.12	8.68	4.54	<b>4.21</b>
Minibuses	-1.05	2.36	-3.25	-2.35	-2.16	1.80	-1.76	0.28	2.11	<b>-0.63</b>
Buses	3.40	-0.73	5.30	-4.05	8.27	12.26	3.89	7.98	7.18	<b>4.04</b>
Motorcycles	4.56	3.59	4.30	1.59	1.93	3.76	1.69	4.35	4.49	<b>3.86</b>
LDV's - Bakkies	3.94	3.46	1.58	2.76	3.28	5.38	3.40	6.22	3.88	<b>3.68</b>
Trucks	3.10	0.93	2.97	-3.44	1.40	8.76	0.91	3.63	2.95	<b>2.54</b>
Other & Unkwn	2.72	1.71	1.75	4.02	0.26	2.20	0.28	2.76	2.98	<b>1.78</b>
<b>Sub-Total</b>	<b>3.88</b>	<b>3.60</b>	<b>2.80</b>	<b>2.79</b>	<b>3.00</b>	<b>5.87</b>	<b>3.26</b>	<b>6.89</b>	<b>4.14</b>	<b>3.79</b>
<b>Towed Vehicles</b>										
Caravans	-0.91	-1.50	0.71	-1.25	-1.14	0.94	-1.33	1.87	0.94	<b>-0.40</b>
Heavy Trailers	3.39	3.49	13.49	-10.74	3.66	11.31	5.96	2.73	8.35	<b>4.41</b>
Light Trailers	2.87	3.30	3.18	2.60	1.88	4.46	2.88	5.01	3.92	<b>3.11</b>
Unknown	-0.05	2.95	-2.04	2.13	-0.33	-0.96	-1.55	1.30	-0.07	<b>-0.15</b>
<b>Sub-Total</b>	<b>2.51</b>	<b>2.96</b>	<b>3.67</b>	<b>0.17</b>	<b>1.84</b>	<b>5.21</b>	<b>2.72</b>	<b>4.22</b>	<b>4.21</b>	<b>2.88</b>
<b>All Vehicles</b>	<b>3.74</b>	<b>3.55</b>	<b>2.88</b>	<b>2.54</b>	<b>2.83</b>	<b>5.78</b>	<b>3.19</b>	<b>6.64</b>	<b>4.15</b>	<b>3.70</b>

Source: National Traffic Information System (NaTIS)

## Annexure B-1 (Number of Vehicles that are Unroadworthy )

Number of Unroadworthy Vehicles										
Dec 2010	GA	KZ	WC	EC	FS	MP	NW	LI	NC	RSA
<b>Motorised Vehicles</b>										
Motorcars	83,360	26,049	23,216	9,534	10,450	10,618	8,162	6,403	1,705	179,497
Minibuses	16,661	6,395	2,955	2,368	1,524	2,352	2,163	2,319	369	37,106
Buses	1,928	776	529	430	223	487	286	430	183	5,272
Motorcycles	16,574	3,530	3,924	1,355	2,016	2,941	1,997	1,294	515	34,146
LDV's - Bakkies	22,686	10,706	6,111	4,341	3,308	4,706	3,301	3,693	1,037	59,889
Trucks	15,662	7,223	3,443	3,010	3,578	4,466	2,891	3,126	1,540	44,939
Other & Unkwn	2,168	1,736	707	561	1,988	1,358	1,209	947	294	10,968
<b>Sub-Total</b>	<b>159,039</b>	<b>56,415</b>	<b>40,885</b>	<b>21,599</b>	<b>23,087</b>	<b>26,928</b>	<b>20,009</b>	<b>18,212</b>	<b>5,643</b>	<b>371,817</b>
<b>Towed Vehicles</b>										
Caravans	1,155	348	369	153	291	395	262	202	84	3,259
Heavy Trailers	6,276	2,779	1,318	1,029	1,879	1,921	1,064	828	475	17,569
Light Trailers	5,634	2,021	2,051	816	1,605	1,200	1,009	810	251	15,397
Unknown	178	106	67	50	80	116	98	52	26	773
<b>Sub-Total</b>	<b>13,243</b>	<b>5,254</b>	<b>3,805</b>	<b>2,048</b>	<b>3,855</b>	<b>3,632</b>	<b>2,433</b>	<b>1,892</b>	<b>836</b>	<b>36,998</b>
<b>All Vehicles</b>	<b>172,282</b>	<b>61,669</b>	<b>44,690</b>	<b>23,647</b>	<b>26,942</b>	<b>30,560</b>	<b>22,442</b>	<b>20,104</b>	<b>6,479</b>	<b>408,815</b>
Dec 2011	GA	KZ	WC	EC	FS	MP	NW	LI	NC	RSA
<b>Motorised Vehicles</b>										
Motorcars	96,583	28,517	26,554	10,766	11,747	12,712	9,447	7,807	2,047	206,180
Minibuses	16,578	6,698	2,827	2,340	1,519	2,429	1,990	2,196	360	36,937
Buses	1,952	756	467	481	238	584	273	435	169	5,355
Motorcycles	16,543	3,349	4,157	1,380	2,034	2,997	1,921	1,341	561	34,283
LDV's - Bakkies	26,245	11,464	6,792	4,676	3,855	5,522	3,546	4,444	1,203	67,747
Trucks	15,624	6,770	3,190	3,035	3,563	4,436	2,575	2,990	1,556	43,739
Other & Unkwn	2,254	1,792	741	645	2,148	1,562	1,217	1,032	334	11,725
<b>Sub-Total</b>	<b>175,779</b>	<b>59,346</b>	<b>44,728</b>	<b>23,323</b>	<b>25,104</b>	<b>30,242</b>	<b>20,969</b>	<b>20,245</b>	<b>6,230</b>	<b>405,966</b>
<b>Towed Vehicles</b>										
Caravans	1,307	357	384	140	274	377	247	213	81	3,380
Heavy Trailers	5,700	2,712	1,154	841	2,033	2,000	1,111	827	462	16,840
Light Trailers	6,155	2,176	2,241	853	1,646	1,334	1,101	918	277	16,701
Unknown	211	142	63	52	80	128	103	49	25	853
<b>Sub-Total</b>	<b>13,373</b>	<b>5,387</b>	<b>3,842</b>	<b>1,886</b>	<b>4,033</b>	<b>3,839</b>	<b>2,562</b>	<b>2,007</b>	<b>845</b>	<b>37,774</b>
<b>All Vehicles</b>	<b>189,152</b>	<b>64,733</b>	<b>48,570</b>	<b>25,209</b>	<b>29,137</b>	<b>34,081</b>	<b>23,531</b>	<b>22,252</b>	<b>7,075</b>	<b>443,740</b>
% Change	GA	KZ	WC	EC	FS	MP	NW	LI	NC	RSA
<b>Motorised Vehicles</b>										
Motorcars	15.86	9.47	14.38	12.92	12.41	19.72	15.74	21.93	20.06	14.87
Minibuses	-0.50	4.74	-4.33	-1.18	-0.33	3.27	-8.00	-5.30	-2.44	-0.46
Buses	1.24	-2.58	-11.72	11.86	6.73	19.92	-4.55	1.16	-7.65	1.57
Motorcycles	-0.19	-5.13	5.94	1.85	0.89	1.90	-3.81	3.63	8.93	0.40
LDV's - Bakkies	15.69	7.08	11.14	7.72	16.54	17.34	7.42	20.34	16.01	13.12
Trucks	-0.24	-6.27	-7.35	0.83	-0.42	-0.67	-10.93	-4.35	1.04	-2.67
Other & Unkwn	3.97	3.23	4.81	14.97	8.05	15.02	0.66	8.98	13.61	6.90
<b>Sub-Total</b>	<b>10.53</b>	<b>5.20</b>	<b>9.40</b>	<b>7.98</b>	<b>8.74</b>	<b>12.31</b>	<b>4.80</b>	<b>11.16</b>	<b>10.40</b>	<b>9.18</b>
<b>Towed Vehicles</b>										
Caravans	13.16	2.59	4.07	-8.50	-5.84	-4.56	-5.73	5.45	-3.57	3.71
Heavy Trailers	-9.18	-2.41	-12.44	-18.27	8.20	4.11	4.42	-0.12	-2.74	-4.15
Light Trailers	9.25	7.67	9.26	4.53	2.55	11.17	9.12	13.33	10.36	8.47
Unknown	18.54	33.96	-5.97	4.00	0.00	10.34	5.10	-5.77	-3.85	10.35
<b>Sub-Total</b>	<b>0.98</b>	<b>2.53</b>	<b>0.97</b>	<b>-7.91</b>	<b>4.62</b>	<b>5.70</b>	<b>5.30</b>	<b>6.08</b>	<b>1.08</b>	<b>2.10</b>
<b>All Vehicles</b>	<b>9.79</b>	<b>4.97</b>	<b>8.68</b>	<b>6.61</b>	<b>8.15</b>	<b>11.52</b>	<b>4.85</b>	<b>10.68</b>	<b>9.20</b>	<b>8.54</b>

Source: National Traffic Information System (NaTIS)

## Annexure B-2 (Number of Unlicensed Vehicles)

Number of Unlicensed Vehicles										
Dec 2010	GA	KZ	WC	EC	FS	MP	NW	LI	NC	RSA
<b>Motorised Vehicles</b>										
Motorcars	76,669	21,545	21,709	12,324	9,324	10,608	9,097	8,340	2,921	172,537
Minibuses	5,511	1,710	1,031	1,026	427	649	793	712	168	12,027
Buses	298	192	78	151	48	84	77	93	19	1,040
Motorcycles	8,328	1,976	3,758	1,427	1,262	1,081	971	621	378	19,802
LDV's - Bakkies	18,286	8,501	5,397	5,784	3,137	4,647	4,154	5,008	1,500	56,414
Trucks	3,422	1,683	720	833	486	834	625	773	214	9,590
Other & Unkwn	998	963	523	368	922	561	930	508	182	5,955
<b>Sub-Total</b>	<b>113,512</b>	<b>36,570</b>	<b>33,216</b>	<b>21,913</b>	<b>15,606</b>	<b>18,464</b>	<b>16,647</b>	<b>16,055</b>	<b>5,382</b>	<b>277,365</b>
<b>Towed Vehicles</b>										
Caravans	1,143	271	294	148	216	259	229	163	58	2,781
Heavy Trailers	1,029	623	214	306	223	286	233	162	89	3,165
Light Trailers	10,125	2,585	2,892	1,504	1,627	1,495	1,577	1,106	584	23,495
Unknown	176	88	93	44	109	93	163	53	31	850
<b>Sub-Total</b>	<b>12,473</b>	<b>3,567</b>	<b>3,493</b>	<b>2,002</b>	<b>2,175</b>	<b>2,133</b>	<b>2,202</b>	<b>1,484</b>	<b>762</b>	<b>30,291</b>
<b>All Vehicles</b>	<b>125,985</b>	<b>40,137</b>	<b>36,709</b>	<b>23,915</b>	<b>17,781</b>	<b>20,597</b>	<b>18,849</b>	<b>17,539</b>	<b>6,144</b>	<b>307,656</b>
Dec 2011	GA	KZ	WC	EC	FS	MP	NW	LI	NC	RSA
<b>Motorised Vehicles</b>										
Motorcars	77,600	22,166	22,346	12,981	9,859	10,654	9,393	8,747	2,949	176,695
Minibuses	5,724	1,821	985	1,010	470	666	794	704	155	12,329
Buses	343	145	69	204	36	91	73	93	23	1,077
Motorcycles	8,371	1,879	4,122	1,432	1,229	1,199	1,048	615	371	20,266
LDV's - Bakkies	18,151	8,662	5,440	6,133	3,350	4,731	4,032	5,240	1,478	57,217
Trucks	3,214	1,324	671	808	532	871	580	841	223	9,064
Other & Unkwn	854	871	513	420	787	600	865	446	192	5,548
<b>Sub-Total</b>	<b>114,257</b>	<b>36,868</b>	<b>34,146</b>	<b>22,988</b>	<b>16,263</b>	<b>18,812</b>	<b>16,785</b>	<b>16,686</b>	<b>5,391</b>	<b>282,196</b>
<b>Towed Vehicles</b>										
Caravans	1,046	224	284	129	209	246	209	159	79	2,585
Heavy Trailers	924	441	156	204	208	320	244	121	57	2,675
Light Trailers	9,769	2,721	2,960	1,648	1,437	1,530	1,746	1,067	627	23,505
Unknown	140	80	101	82	103	93	187	57	20	863
<b>Sub-Total</b>	<b>11,879</b>	<b>3,466</b>	<b>3,501</b>	<b>2,063</b>	<b>1,957</b>	<b>2,189</b>	<b>2,386</b>	<b>1,404</b>	<b>783</b>	<b>29,628</b>
<b>All Vehicles</b>	<b>126,136</b>	<b>40,334</b>	<b>37,647</b>	<b>25,051</b>	<b>18,220</b>	<b>21,001</b>	<b>19,171</b>	<b>18,090</b>	<b>6,174</b>	<b>311,824</b>
% Change	GA	KZ	WC	EC	FS	MP	NW	LI	NC	RSA
<b>Motorised Vehicles</b>										
Motorcars	1.21	2.88	2.93	5.33	5.74	0.43	3.25	4.88	0.96	2.41
Minibuses	3.86	6.49	-4.46	-1.56	10.07	2.62	0.13	-1.12	-7.74	2.51
Buses	15.10	-24.48	-11.54	35.10	-25.00	8.33	-5.19	0.00	21.05	3.56
Motorcycles	0.52	-4.91	9.69	0.35	-2.61	10.92	7.93	-0.97	-1.85	2.34
LDV's - Bakkies	-0.74	1.89	0.80	6.03	6.79	1.81	-2.94	4.63	-1.47	1.42
Trucks	-6.08	-21.33	-6.81	-3.00	9.47	4.44	-7.20	8.80	4.21	-5.48
Other & Unkwn	-14.43	-9.55	-1.91	14.13	-14.64	6.95	-6.99	-12.20	5.49	-6.83
<b>Sub-Total</b>	<b>0.66</b>	<b>0.81</b>	<b>2.80</b>	<b>4.91</b>	<b>4.21</b>	<b>1.88</b>	<b>0.83</b>	<b>3.93</b>	<b>0.17</b>	<b>1.74</b>
<b>Towed Vehicles</b>										
Caravans	-8.49	-17.34	-3.40	-12.84	-3.24	-5.02	-8.73	-2.45	36.21	-7.05
Heavy Trailers	-10.20	-29.21	-27.10	-33.33	-6.73	11.89	4.72	-25.31	-35.96	-15.48
Light Trailers	-3.52	5.26	2.35	9.57	-11.68	2.34	10.72	-3.53	7.36	0.04
Unknown	-20.45	-9.09	8.60	86.36	-5.50	0.00	14.72	7.55	-35.48	1.53
<b>Sub-Total</b>	<b>-4.76</b>	<b>-2.83</b>	<b>0.23</b>	<b>3.05</b>	<b>-10.02</b>	<b>2.63</b>	<b>8.36</b>	<b>-5.39</b>	<b>2.76</b>	<b>-2.19</b>
<b>All Vehicles</b>	<b>0.12</b>	<b>0.49</b>	<b>2.56</b>	<b>4.75</b>	<b>2.47</b>	<b>1.96</b>	<b>1.71</b>	<b>3.14</b>	<b>0.49</b>	<b>1.35</b>

Source: National Traffic Information System (NaTIS)

## Annexure B-3 (Number of Vehicles that are unroadworthy, Unlicenced or Both)

Number of Both Unroadworthy & Unlicenced Vehicles										
Dec 2010	GA	KZ	WC	EC	FS	MP	NW	LI	NC	RSA
<b>Motorised Vehicles</b>										
Motorcars	8,297	3,711	2,858	1,963	1,726	1,729	1,195	1,195	298	22,972
Minibuses	2,008	768	292	361	165	255	309	289	51	4,498
Buses	89	93	27	39	23	30	19	22	9	351
Motorcycles	1,489	373	391	152	206	229	162	94	41	3,137
LDV's - Bakkies	1,877	1,409	674	718	415	706	469	555	141	6,964
Trucks	919	601	199	235	196	291	213	282	80	3,016
Other & Unkwn	143	126	43	39	91	72	107	69	15	705
<b>Sub-Total</b>	<b>14,822</b>	<b>7,081</b>	<b>4,484</b>	<b>3,507</b>	<b>2,822</b>	<b>3,312</b>	<b>2,474</b>	<b>2,506</b>	<b>635</b>	<b>41,643</b>
<b>Towed Vehicles</b>										
Caravans	88	31	35	8	26	33	28	23	5	277
Heavy Trailers	245	173	93	88	49	58	65	41	28	840
Light Trailers	540	168	153	87	93	98	104	71	14	1,328
Unknown	14	10	7	3	10	6	16	2	1	69
<b>Sub-Total</b>	<b>887</b>	<b>382</b>	<b>288</b>	<b>186</b>	<b>178</b>	<b>195</b>	<b>213</b>	<b>137</b>	<b>48</b>	<b>2,514</b>
<b>All Vehicles</b>	<b>15,709</b>	<b>7,463</b>	<b>4,772</b>	<b>3,693</b>	<b>3,000</b>	<b>3,507</b>	<b>2,687</b>	<b>2,643</b>	<b>683</b>	<b>44,157</b>
Dec 2011	GA	KZ	WC	EC	FS	MP	NW	LI	NC	RSA
<b>Motorised Vehicles</b>										
Motorcars	8,934	3,614	2,901	1,747	1,861	1,896	1,285	1,483	311	24,032
Minibuses	2,130	722	285	320	172	282	253	274	49	4,487
Buses	113	46	24	52	13	26	22	31	9	336
Motorcycles	1,483	327	398	154	212	267	180	112	36	3,169
LDV's - Bakkies	2,061	1,393	738	753	459	839	442	755	166	7,606
Trucks	893	451	185	210	224	328	170	272	99	2,832
Other & Unkwn	118	98	33	52	71	63	80	53	16	584
<b>Sub-Total</b>	<b>15,732</b>	<b>6,651</b>	<b>4,564</b>	<b>3,288</b>	<b>3,012</b>	<b>3,701</b>	<b>2,432</b>	<b>2,980</b>	<b>686</b>	<b>43,046</b>
<b>Towed Vehicles</b>										
Caravans	88	24	25	5	15	35	24	28	6	250
Heavy Trailers	192	122	40	77	69	95	64	34	15	708
Light Trailers	610	173	170	92	101	96	103	81	22	1,448
Unknown	15	9	3	6	4	10	3	3	0	53
<b>Sub-Total</b>	<b>905</b>	<b>328</b>	<b>238</b>	<b>180</b>	<b>189</b>	<b>236</b>	<b>194</b>	<b>146</b>	<b>43</b>	<b>2,459</b>
<b>All Vehicles</b>	<b>16,637</b>	<b>6,979</b>	<b>4,802</b>	<b>3,468</b>	<b>3,201</b>	<b>3,937</b>	<b>2,626</b>	<b>3,126</b>	<b>729</b>	<b>45,505</b>
% Change	GA	KZ	WC	EC	FS	MP	NW	LI	NC	RSA
<b>Motorised Vehicles</b>										
Motorcars	7.68	-2.61	1.50	-11.00	7.82	9.66	7.53	24.10	4.36	4.61
Minibuses	6.08	-5.99	-2.40	-11.36	4.24	10.59	-18.12	-5.19	-3.92	-0.24
Buses	26.97	-50.54	-11.11	33.33	-43.48	-13.33	15.79	40.91	0.00	-4.27
Motorcycles	-0.40	-12.33	1.79	1.32	2.91	16.59	11.11	19.15	-12.20	1.02
LDV's - Bakkies	9.80	-1.14	9.50	4.87	10.60	18.84	-5.76	36.04	17.73	9.22
Trucks	-2.83	-24.96	-7.04	-10.64	14.29	12.71	-20.19	-3.55	23.75	-6.10
Other & Unkwn	-17.48	-22.22	-23.26	33.33	-21.98	-12.50	-25.23	-23.19	6.67	-17.16
<b>Sub-Total</b>	<b>6.14</b>	<b>-6.07</b>	<b>1.78</b>	<b>-6.24</b>	<b>6.73</b>	<b>11.75</b>	<b>-1.70</b>	<b>18.91</b>	<b>8.03</b>	<b>3.37</b>
<b>Towed Vehicles</b>										
Caravans	0.00	-22.58	-28.57	-37.50	-42.31	6.06	-14.29	21.74	20.00	-9.75
Heavy Trailers	-21.63	-29.48	-56.99	-12.50	40.82	63.79	-1.54	-17.07	-46.43	-15.71
Light Trailers	12.96	2.98	11.11	5.75	8.60	-2.04	-0.96	14.08	57.14	9.04
Unknown	7.14	-10.00	-57.14	100.00	-60.00	66.67	-81.25	50.00	-100.00	-23.19
<b>Sub-Total</b>	<b>2.03</b>	<b>-14.14</b>	<b>-17.36</b>	<b>-3.23</b>	<b>6.18</b>	<b>21.03</b>	<b>-8.92</b>	<b>6.57</b>	<b>-10.42</b>	<b>-2.19</b>
<b>All Vehicles</b>	<b>5.91</b>	<b>-6.49</b>	<b>0.63</b>	<b>-6.09</b>	<b>6.70</b>	<b>12.26</b>	<b>-2.27</b>	<b>18.27</b>	<b>6.73</b>	<b>3.05</b>

Source: National Traffic Information System (NaTIS)



**Annexure C-1 (Number of Learner Licences Issued)**

<b>Dec 2010</b>	<b>Number of Learners Licences Issued per Province</b>									
<b>Category</b>	<b>GA</b>	<b>KZ</b>	<b>WC</b>	<b>EC</b>	<b>FS</b>	<b>MP</b>	<b>NW</b>	<b>LI</b>	<b>NC</b>	<b>RSA</b>
1	19,807	4,515	15,294	3,619	2,981	2,708	2,159	1,371	1,276	53,730
2	106,787	45,872	102,089	40,319	19,253	11,691	14,645	8,338	7,566	356,560
3	300,052	148,637	85,781	75,929	57,367	83,257	59,833	99,739	20,565	931,160
<b>Total</b>	<b>426,646</b>	<b>199,024</b>	<b>203,164</b>	<b>119,867</b>	<b>79,601</b>	<b>97,656</b>	<b>76,637</b>	<b>109,448</b>	<b>29,407</b>	<b>1,341,450</b>
<b>Dec 2011</b>	<b>Number of Learners Licences Issued per Province</b>									
<b>Category</b>	<b>GA</b>	<b>KZ</b>	<b>WC</b>	<b>EC</b>	<b>FS</b>	<b>MP</b>	<b>NW</b>	<b>LI</b>	<b>NC</b>	<b>RSA</b>
1	20,222	5,047	15,834	3,565	3,011	2,791	2,265	1,507	1,279	55,521
2	129,012	55,745	110,182	46,391	24,485	14,807	18,736	11,223	8,996	419,577
3	267,604	132,850	82,479	67,979	53,454	89,617	52,267	100,650	18,845	865,745
<b>Total</b>	<b>416,838</b>	<b>193,642</b>	<b>208,495</b>	<b>117,935</b>	<b>80,950</b>	<b>107,215</b>	<b>73,268</b>	<b>113,380</b>	<b>29,120</b>	<b>1,340,843</b>
<b>Change</b>	<b>Number of Learners Licences Issued per Province</b>									
<b>Category</b>	<b>GA</b>	<b>KZ</b>	<b>WC</b>	<b>EC</b>	<b>FS</b>	<b>MP</b>	<b>NW</b>	<b>LI</b>	<b>NC</b>	<b>RSA</b>
1	415	532	540	-54	30	83	106	136	3	1,791
2	22,225	9,873	8,093	6,072	5,232	3,116	4,091	2,885	1,430	63,017
3	-32,448	-15,787	-3,302	-7,950	-3,913	6,360	-7,566	911	-1,720	-65,415
<b>Total</b>	<b>-9,808</b>	<b>-5,382</b>	<b>5,331</b>	<b>-1,932</b>	<b>1,349</b>	<b>9,559</b>	<b>-3,369</b>	<b>3,932</b>	<b>-287</b>	<b>-607</b>
<b>% change</b>	<b>Number of Learners Licences Issued per Province</b>									
<b>Category</b>	<b>GA</b>	<b>KZ</b>	<b>WC</b>	<b>EC</b>	<b>FS</b>	<b>MP</b>	<b>NW</b>	<b>LI</b>	<b>NC</b>	<b>RSA</b>
1	2.10	11.78	3.53	-1.49	1.01	3.06	4.91	9.92	0.24	3.33
2	20.81	21.52	7.93	15.06	27.17	26.65	27.93	34.60	18.90	17.67
3	-10.81	-10.62	-3.85	-10.47	-6.82	7.64	-12.65	0.91	-8.36	-7.03
<b>Total</b>	<b>-2.30</b>	<b>-2.70</b>	<b>2.62</b>	<b>-1.61</b>	<b>1.69</b>	<b>9.79</b>	<b>-4.40</b>	<b>3.59</b>	<b>-0.98</b>	<b>-0.05</b>

Source: National Traffic Information System (NaTIS)

**Learner Licences:**

Category 1: Motorcycle;

Category 2: Light Motor Vehicle; and

Category 3: Heavy Motor Vehicle.

## Annexure C-2 (Number of Driving Licences Issued)

2010	Number of Driving Licences Issued per Province									
Category	GA	KZ	WC	EC	FS	MP	NW	LI	NC	RSA
A1	158,140	55,554	90,945	31,658	25,109	21,118	18,666	13,164	8,669	423,023
A	45,225	13,026	26,217	9,155	9,268	6,888	6,731	3,908	2,479	122,897
B	619,577	313,527	365,313	145,195	96,993	81,028	83,887	48,246	34,210	1,787,976
EB	3,163	4,595	2,787	789	407	969	1,557	1,274	340	15,881
C1	605,322	301,188	112,483	77,896	91,301	168,869	110,219	271,463	35,117	1,773,858
EC1	1,323,748	578,084	762,532	307,494	176,830	161,365	143,201	106,407	64,427	3,624,088
C	271,036	140,311	107,013	61,102	71,008	84,805	50,491	76,479	22,920	885,165
EC	236,705	70,694	51,837	45,227	36,046	52,222	37,843	62,744	11,148	604,466
<b>Total</b>	<b>3,262,916</b>	<b>1,476,979</b>	<b>1,519,127</b>	<b>678,516</b>	<b>506,962</b>	<b>577,264</b>	<b>452,595</b>	<b>583,685</b>	<b>179,310</b>	<b>9,237,354</b>
2011	Number of Driving Licences Issued per Province									
Category	GA	KZ	WC	EC	FS	MP	NW	LI	NC	RSA
A1	160,347	56,157	93,821	31,960	25,322	21,332	18,777	13,382	8,774	429,872
A	45,161	13,066	26,639	9,179	9,224	6,841	6,741	3,949	2,472	123,272
B	693,241	334,196	402,031	157,786	105,266	89,361	89,046	54,520	36,341	1,961,788
EB	3,390	4,668	2,955	862	426	1,230	1,572	1,367	352	16,822
C1	690,472	339,403	127,452	91,920	100,759	201,060	121,343	312,183	38,187	2,022,779
EC1	1,321,769	577,835	768,045	307,803	176,535	161,402	143,079	107,109	64,564	3,628,141
C	272,500	142,769	108,639	62,015	72,185	86,582	50,843	77,927	23,263	896,723
EC	234,788	70,614	51,575	45,397	35,947	52,322	37,827	63,350	11,235	603,055
<b>Total</b>	<b>3,421,668</b>	<b>1,538,708</b>	<b>1,581,157</b>	<b>706,922</b>	<b>525,664</b>	<b>620,130</b>	<b>469,228</b>	<b>633,787</b>	<b>185,188</b>	<b>9,682,452</b>
Change	Number of Driving Licences Issued per Province									
Category	GA	KZ	WC	EC	FS	MP	NW	LI	NC	RSA
A1	2,207	603	2,876	302	213	214	111	218	105	6,849
A	-64	40	422	24	-44	-47	10	41	-7	375
B	73,664	20,669	36,718	12,591	8,273	8,333	5,159	6,274	2,131	173,812
EB	227	73	168	73	19	261	15	93	12	941
C1	85,150	38,215	14,969	14,024	9,458	32,191	11,124	40,720	3,070	248,921
EC1	-1,979	-249	5,513	309	-295	37	-122	702	137	4,053
C	1,464	2,458	1,626	913	1,177	1,777	352	1,448	343	11,558
EC	-1,917	-80	-262	170	-99	100	-16	606	87	-1,411
<b>Total</b>	<b>158,752</b>	<b>61,729</b>	<b>62,030</b>	<b>28,406</b>	<b>18,702</b>	<b>42,866</b>	<b>16,633</b>	<b>50,102</b>	<b>5,878</b>	<b>445,098</b>
% change	Number of Driving Licences Issued per Province									
Category	GA	KZ	WC	EC	FS	MP	NW	LI	NC	RSA
A1	1.40	1.09	3.16	0.95	0.85	1.01	0.59	1.66	1.21	1.62
A	-0.14	0.31	1.61	0.26	-0.47	-0.68	0.15	1.05	-0.28	0.31
B	11.89	6.59	10.05	8.67	8.53	10.28	6.15	13.00	6.23	9.72
EB	7.18	1.59	6.03	9.25	4.67	26.93	0.96	7.30	3.53	5.93
C1	14.07	12.69	13.31	18.00	10.36	19.06	10.09	15.00	8.74	14.03
EC1	-0.15	-0.04	0.72	0.10	-0.17	0.02	-0.09	0.66	0.21	0.11
C	0.54	1.75	1.52	1.49	1.66	2.10	0.70	1.89	1.50	1.31
EC	-0.81	-0.11	-0.51	0.38	-0.27	0.19	-0.04	0.97	0.78	-0.23
<b>Total</b>	<b>4.87</b>	<b>4.18</b>	<b>4.08</b>	<b>4.19</b>	<b>3.69</b>	<b>7.43</b>	<b>3.68</b>	<b>8.58</b>	<b>3.28</b>	<b>4.82</b>

Source: National Traffic Information System (NaTIS)

### Driving licences:

<b>A</b>	Motorcycle > 125 cub.cm	<b>A1</b>	Motorcycle < 125 cub.cm	<b>B</b>	Motor vehicle < 3,5000 kg
<b>C</b>	Motorvehicle > 16,000 kg	<b>C1</b>	Motor vehicle 3,500 – 16,000 kg	<b>EB</b>	Articulated motor vehicle <16,000 kg
		<b>EC</b>	Articulated vehicle > 16,000 kg	<b>EC1</b>	Articulated vehicle 3,500 – 16,000 kg

**Annexure C-3 (Number of Professional Driving Permits (PrDPs) Issued)**

2010	Number of Professional Driving Permits (PrDPs) Issued per Province									
Category	GA	KZ	WC	EC	FS	MP	NW	LI	NC	RSA
G	1,841	2,275	2,109	791	942	1,131	519	1,143	431	11,182
P	251	152	714	180	163	152	56	120	52	1,840
P G	217,868	131,429	110,918	62,661	49,285	71,937	44,889	81,363	19,421	789,771
D G	35	6	31	2	15	17	19	13		138
D P G	7,330	5,561	2,288	1,102	1,735	1,671	856	964	379	21,886
Total	227,325	139,423	116,060	64,736	52,140	74,908	46,339	83,603	20,283	824,817
2011	Number of Professional Driving Permits (PrDPs) Issued per Province									
Category	GA	KZ	WC	EC	FS	MP	NW	LI	NC	RSA
G	2,032	2,266	2,165	848	1,018	1,317	498	1,113	413	11,670
P	148	52	212	62	72	91	23	40	30	730
P G	232,584	138,924	118,862	66,078	52,341	78,475	46,090	88,678	20,284	842,316
D G	36	16	10	2	13	14	19	10	1	121
D P G	8,263	6,580	2,560	1,241	2,023	1,958	905	1,088	453	25,071
Total	243,063	147,838	123,809	68,231	55,467	81,855	47,535	90,929	21,181	879,908
Change	Number of Professional Driving Permits (PrDPs) Issued per Province									
Category	GA	KZ	WC	EC	FS	MP	NW	LI	NC	RSA
G	191	-9	56	57	76	186	-21	-30	-18	488
P	-103	-100	-502	-118	-91	-61	-33	-80	-22	-1,110
P G	14,716	7,495	7,944	3,417	3,056	6,538	1,201	7,315	863	52,545
D G	1	10	-21	0	-2	-3	0	-3	1	-17
D P G	933	1,019	272	139	288	287	49	124	74	3,185
Total	15,738	8,415	7,749	3,495	3,327	6,947	1,196	7,326	898	55,091
% change	Number of Professional Driving Permits (PrDPs) Issued per Province									
Category	GA	KZ	WC	EC	FS	MP	NW	LI	NC	RSA
G	10.37	-0.40	2.66	7.21	8.07	16.45	-4.05	-2.62	-4.18	4.36
P	-41.04	-65.79	-70.31	-65.56	-55.83	-40.13	-58.93	-66.67	-42.31	-60.33
P G	6.75	5.70	7.16	5.45	6.20	9.09	2.68	8.99	4.44	6.65
D G	2.86	166.67	-67.74	0.00	-13.33	-17.65	0.00	-23.08		-12.32
D P G	12.73	18.32	11.89	12.61	16.60	17.18	5.72	12.86	19.53	14.55
Total	6.92	6.04	6.68	5.40	6.38	9.27	2.58	8.76	4.43	6.68

Source: National Traffic Information System (NaTIS)

**Professional Driving Permits (PrDPs)**

G: Goods;

P: Passengers; and

D: Dangerous goods.

## Annexure D (Monthly Number of Fatal Crashes per Province: 2008 - 2011)

Year	Number of Fatal Crashes per Province per Month										
	Month	GA	KZ	WC	EC	FS	MP	NW	LI	NC	RSA
2008	Jan	141	131	80	89	51	65	59	75	20	711
	Feb	205	135	106	71	40	75	45	63	23	763
	Mch	211	176	100	99	48	99	85	91	21	930
	Apr	203	138	120	69	56	90	87	89	24	876
	May	232	172	114	96	63	62	77	91	10	917
	Jun	162	233	107	94	65	115	78	107	27	988
	Jul	240	220	157	87	62	103	82	86	23	1,060
	Aug	250	193	131	102	19	126	70	92	6	989
	Sep	216	172	94	91	51	109	71	90	19	913
	Oct	176	195	80	82	55	102	61	74	13	838
	Nov	69	157	97	69	57	111	72	90	23	745
	Dec	206	195	104	118	83	130	82	133	24	1,075
2009	Jan	172	154	87	89	46	86	50	76	19	779
	Feb	136	135	65	64	56	68	51	70	16	661
	Mch	166	189	103	60	65	84	52	83	18	820
	Apr	208	208	83	96	49	105	87	103	17	956
	May	194	223	109	44	69	125	79	109	18	970
	Jun	155	194	107	82	49	123	74	102	17	903
	Jul	206	203	75	101	62	114	89	113	19	982
	Aug	169	212	74	107	63	121	82	104	24	956
	Sep	185	169	88	102	65	101	66	98	22	896
	Oct	181	156	86	84	71	112	82	94	26	892
	Nov	205	187	94	89	69	102	94	89	19	948
	Dec	219	184	105	137	79	116	78	132	44	1,094
2010	Jan	121	152	89	92	70	97	65	76	23	785
	Feb	171	164	82	41	52	81	65	80	18	754
	Mch	139	164	93	94	64	80	79	81	18	812
	Apr	95	205	94	117	59	94	54	95	21	834
	May	197	170	94	105	60	102	66	94	28	916
	Jun	125	209	75	116	74	105	66	94	23	887
	Jul	176	195	93	107	78	116	76	115	20	976
	Aug	166	217	71	114	60	105	88	98	23	942
	Sep	214	206	81	119	64	103	82	108	18	995
	Oct	207	184	78	119	79	106	73	102	28	976
	Nov	181	187	69	107	65	96	71	90	16	882
	Dec	167	196	110	141	98	103	84	127	52	1,078
2011	Jan	140	146	82	89	56	78	62	78	22	753
	Feb	162	148	91	96	46	93	55	67	13	771
	Mch	178	184	88	77	60	78	54	97	19	835
	Apr	210	214	88	105	71	106	71	114	23	1,002
	May	198	197	84	132	62	77	77	106	14	947
	Jun	193	217	89	89	66	100	68	102	20	944
	Jul	214	221	98	142	84	121	81	137	28	1,126
	Aug	197	183	81	102	59	76	89	89	17	893
	Sep	234	192	78	108	77	114	84	106	28	1,021
	Oct	213	196	76	125	69	105	68	127	25	1,004
	Nov	200	156	77	112	73	75	57	81	21	852
	Dec	182	227	107	135	90	109	78	120	32	1,080

## Annexure E (Monthly Number of Fatalities per Province: 2008 – 2011)

Year	Number of Fatalities per Province per Month										
	Month	GA	KZ	WC	EC	FS	MP	NW	LI	NC	RSA
2008	Jan	162	156	102	120	80	86	70	100	26	900
	Feb	237	173	125	81	45	94	54	93	54	955
	Mch	231	223	134	140	67	160	118	123	36	1,231
	Apr	225	172	155	99	67	136	105	102	31	1,093
	May	274	200	118	155	72	94	98	105	10	1,125
	Jun	190	268	118	147	96	166	110	123	37	1,255
	Jul	272	300	191	117	83	168	98	101	33	1,363
	Aug	278	229	133	125	23	192	104	103	9	1,196
	Sep	232	231	110	138	72	119	95	131	23	1,151
	Oct	188	243	106	121	86	252	110	82	26	1,213
	Nov	88	198	106	101	83	227	98	136	23	1,058
	Dec	232	249	124	146	107	160	107	175	33	1,333
2009	Jan	208	173	127	122	67	104	89	95	27	1,013
	Feb	153	158	75	95	50	98	64	77	18	787
	Mch	168	351	118	100	58	116	54	110	45	1,119
	Apr	237	246	80	118	81	140	111	133	21	1,165
	May	236	300	128	62	79	159	98	124	23	1,208
	Jun	155	226	112	99	66	146	104	148	17	1,072
	Jul	223	234	124	115	92	147	123	151	19	1,227
	Aug	192	283	88	170	82	147	123	123	26	1,235
	Sep	209	266	106	199	98	165	74	131	30	1,279
	Oct	204	190	88	131	101	161	82	146	28	1,132
	Nov	252	191	114	132	87	130	112	93	22	1,133
	Dec	248	237	125	200	106	161	97	162	61	1,398
2010	Jan	135	213	97	109	101	105	83	102	26	971
	Feb	181	235	105	60	66	99	70	127	72	1,015
	Mch	154	176	140	121	139	91	128	114	25	1,088
	Apr	100	274	98	195	106	117	65	121	23	1,099
	May	212	188	175	151	77	122	107	111	36	1,179
	Jun	136	266	89	180	98	144	88	130	43	1,174
	Jul	228	261	111	174	95	158	121	151	23	1,322
	Aug	178	252	98	174	89	131	114	149	28	1,213
	Sep	243	227	92	159	102	184	105	147	24	1,282
	Oct	226	236	98	153	91	127	87	114	45	1,177
	Nov	202	211	75	140	83	147	91	112	22	1,083
	Dec	186	248	144	168	123	166	100	151	79	1,365
2011	Jan	150	170	88	111	77	83	78	94	20	871
	Feb	235	171	94	137	58	108	67	102	13	985
	Mch	222	236	96	84	77	106	71	144	19	1,055
	Apr	240	254	96	119	118	163	88	137	33	1,248
	May	220	220	90	167	66	89	97	134	20	1,103
	Jun	238	255	94	112	78	156	85	151	28	1,197
	Jul	217	261	118	167	88	155	99	192	28	1,325
	Aug	203	210	101	113	67	98	97	114	21	1,024
	Sep	278	287	83	108	88	182	109	170	28	1,333
	Oct	222	235	79	175	69	157	73	158	25	1,193
	Nov	290	177	93	171	92	80	64	112	26	1,105
	Dec	202	276	155	189	139	260	91	168	35	1,515

## Annexure F-1

2010		Number of Fatalities per Road User Group									
Month	User Group	GA	KZ	WC	EC	FS	MP	NW	LI	NC	RSA
Jan	Drivers	44	54	27	25	33	32	35	23	11	284
	Passengers	34	91	25	46	48	43	28	53	7	373
	Pedestrians	57	68	45	38	20	30	20	26	8	313
	<b>Total</b>	<b>135</b>	<b>213</b>	<b>97</b>	<b>109</b>	<b>101</b>	<b>105</b>	<b>83</b>	<b>102</b>	<b>26</b>	<b>971</b>
Feb	Drivers	62	80	39	13	30	37	10	30	12	314
	Passengers	30	66	32	30	23	31	26	63	54	356
	Pedestrians	89	89	34	17	13	31	34	33	6	345
	<b>Total</b>	<b>181</b>	<b>235</b>	<b>105</b>	<b>60</b>	<b>66</b>	<b>99</b>	<b>70</b>	<b>127</b>	<b>72</b>	<b>1,015</b>
Mch	Drivers	55	46	47	40	43	21	36	41	7	337
	Passengers	15	30	51	47	81	37	63	45	14	383
	Pedestrians	84	99	42	34	15	34	28	28	4	368
	<b>Total</b>	<b>154</b>	<b>176</b>	<b>140</b>	<b>121</b>	<b>139</b>	<b>91</b>	<b>128</b>	<b>114</b>	<b>25</b>	<b>1,088</b>
Apr	Drivers	38	60	35	30	22	41	28	40	6	299
	Passengers	15	120	18	117	65	41	11	47	8	440
	Pedestrians	48	94	45	48	20	36	26	34	10	360
	<b>Total</b>	<b>100</b>	<b>274</b>	<b>98</b>	<b>195</b>	<b>106</b>	<b>117</b>	<b>65</b>	<b>121</b>	<b>23</b>	<b>1,099</b>
May	Drivers	55	39	27	25	20	40	30	31	20	287
	Passengers	40	50	101	88	41	37	61	42	16	477
	Pedestrians	117	99	47	38	16	45	16	39	0	415
	<b>Total</b>	<b>212</b>	<b>188</b>	<b>175</b>	<b>151</b>	<b>77</b>	<b>122</b>	<b>107</b>	<b>111</b>	<b>36</b>	<b>1,179</b>
Jun	Drivers	43	78	20	52	37	45	35	23	13	346
	Passengers	32	83	35	110	46	54	41	64	30	494
	Pedestrians	61	105	35	17	15	45	13	43	0	333
	<b>Total</b>	<b>136</b>	<b>266</b>	<b>89</b>	<b>180</b>	<b>98</b>	<b>144</b>	<b>88</b>	<b>130</b>	<b>43</b>	<b>1,174</b>
Jul	Drivers	69	66	40	40	23	68	41	45	7	399
	Passengers	73	91	28	85	38	71	48	53	10	496
	Pedestrians	86	104	43	49	34	19	31	53	7	426
	<b>Total</b>	<b>228</b>	<b>261</b>	<b>111</b>	<b>174</b>	<b>95</b>	<b>158</b>	<b>121</b>	<b>151</b>	<b>23</b>	<b>1,322</b>
Aug	Drivers	62	75	28	47	29	60	46	33	11	391
	Passengers	28	79	40	77	40	34	40	77	12	428
	Pedestrians	88	98	30	50	20	37	28	38	5	394
	<b>Total</b>	<b>178</b>	<b>252</b>	<b>98</b>	<b>174</b>	<b>89</b>	<b>131</b>	<b>114</b>	<b>149</b>	<b>28</b>	<b>1,213</b>
Sep	Drivers	106	52	33	47	29	43	35	37	6	388
	Passengers	48	55	37	65	52	108	39	76	12	493
	Pedestrians	89	119	22	47	20	33	31	34	6	400
	<b>Total</b>	<b>243</b>	<b>227</b>	<b>92</b>	<b>159</b>	<b>102</b>	<b>184</b>	<b>105</b>	<b>147</b>	<b>24</b>	<b>1,282</b>
Oct	Drivers	78	59	27	32	32	43	30	31	8	340
	Passengers	31	84	35	72	38	45	34	38	34	410
	Pedestrians	118	93	37	49	20	39	24	45	3	427
	<b>Total</b>	<b>226</b>	<b>236</b>	<b>98</b>	<b>153</b>	<b>91</b>	<b>127</b>	<b>87</b>	<b>114</b>	<b>45</b>	<b>1,177</b>
Nov	Drivers	80	50	25	54	38	63	24	37	7	379
	Passengers	49	43	23	40	28	66	29	45	11	333
	Pedestrians	73	118	27	47	18	18	38	29	4	371
	<b>Total</b>	<b>202</b>	<b>211</b>	<b>75</b>	<b>140</b>	<b>83</b>	<b>147</b>	<b>91</b>	<b>112</b>	<b>22</b>	<b>1,083</b>
Dec	Drivers	55	51	34	24	40	47	28	42	20	341
	Passengers	46	97	70	69	60	90	40	49	48	569
	Pedestrians	85	100	40	76	23	29	32	59	11	456
	<b>Total</b>	<b>186</b>	<b>248</b>	<b>144</b>	<b>168</b>	<b>123</b>	<b>166</b>	<b>100</b>	<b>151</b>	<b>79</b>	<b>1,365</b>
Year Total	Drivers	747	712	383	429	376	540	378	414	128	4,106
	Passengers	441	890	493	846	560	655	459	652	256	5,253
	Pedestrians	993	1,186	447	509	233	395	321	462	62	4,609
	<b>Total</b>	<b>2,181</b>	<b>2,788</b>	<b>1,323</b>	<b>1,784</b>	<b>1,169</b>	<b>1,591</b>	<b>1,159</b>	<b>1,528</b>	<b>446</b>	<b>13,967</b>

## Annexure F-2

2011		Number of Fatalities per Road User Group									
Month	User Group	GA	KZ	WC	EC	FS	MP	NW	LI	NC	RSA
Jan	Drivers	48	33	29	15	31	12	31	29	11	239
	Passengers	34	72	21	59	31	37	31	41	6	332
	Pedestrians	68	65	38	37	15	34	16	24	3	300
	<b>Total</b>	<b>150</b>	<b>170</b>	<b>88</b>	<b>111</b>	<b>77</b>	<b>83</b>	<b>78</b>	<b>94</b>	<b>20</b>	<b>871</b>
Feb	Drivers	85	25	34	27	23	23	19	37	0	273
	Passengers	93	63	17	41	12	51	24	51	0	352
	Pedestrians	57	83	43	69	23	34	24	14	13	360
	<b>Total</b>	<b>235</b>	<b>171</b>	<b>94</b>	<b>137</b>	<b>58</b>	<b>108</b>	<b>67</b>	<b>102</b>	<b>13</b>	<b>985</b>
Mch	Drivers	48	68	31	28	20	46	17	25	19	302
	Passengers	78	85	16	7	40	43	27	85	0	381
	Pedestrians	96	83	49	49	17	17	27	34	0	372
	<b>Total</b>	<b>222</b>	<b>236</b>	<b>96</b>	<b>84</b>	<b>77</b>	<b>106</b>	<b>71</b>	<b>144</b>	<b>19</b>	<b>1,055</b>
Apr	Drivers	89	57	31	26	51	35	36	31	7	363
	Passengers	59	78	21	38	45	89	28	48	23	429
	Pedestrians	92	119	44	55	22	39	24	58	3	456
	<b>Total</b>	<b>240</b>	<b>254</b>	<b>96</b>	<b>119</b>	<b>118</b>	<b>163</b>	<b>88</b>	<b>137</b>	<b>33</b>	<b>1,248</b>
May	Drivers	66	54	34	35	27	33	28	40	0	317
	Passengers	57	37	13	74	12	27	28	47	17	312
	Pedestrians	97	129	43	58	27	29	41	47	3	474
	<b>Total</b>	<b>220</b>	<b>220</b>	<b>90</b>	<b>167</b>	<b>66</b>	<b>89</b>	<b>97</b>	<b>134</b>	<b>20</b>	<b>1,103</b>
Jun	Drivers	76	67	37	31	35	43	35	45	5	374
	Passengers	76	67	14	25	25	85	23	74	18	407
	Pedestrians	86	121	43	56	18	28	27	32	5	416
	<b>Total</b>	<b>238</b>	<b>255</b>	<b>94</b>	<b>112</b>	<b>78</b>	<b>156</b>	<b>85</b>	<b>151</b>	<b>28</b>	<b>1,197</b>
Jul	Drivers	92	58	32	57	28	44	37	59	19	426
	Passengers	20	66	25	64	16	61	35	90	3	380
	Pedestrians	105	137	61	46	44	50	27	43	6	519
	<b>Total</b>	<b>217</b>	<b>261</b>	<b>118</b>	<b>167</b>	<b>88</b>	<b>155</b>	<b>99</b>	<b>192</b>	<b>28</b>	<b>1,325</b>
Aug	Drivers	76	59	30	30	34	32	39	40	7	347
	Passengers	32	51	27	30	25	41	27	44	14	291
	Pedestrians	95	100	44	53	8	25	31	30	0	386
	<b>Total</b>	<b>203</b>	<b>210</b>	<b>101</b>	<b>113</b>	<b>67</b>	<b>98</b>	<b>97</b>	<b>114</b>	<b>21</b>	<b>1,024</b>
Sep	Drivers	87	43	32	18	44	53	32	41	19	369
	Passengers	39	134	11	18	11	87	47	96	9	452
	Pedestrians	152	110	40	72	33	42	30	33	0	512
	<b>Total</b>	<b>278</b>	<b>287</b>	<b>83</b>	<b>108</b>	<b>88</b>	<b>182</b>	<b>109</b>	<b>170</b>	<b>28</b>	<b>1,333</b>
Oct	Drivers	90	64	30	17	69	61	42	52	0	425
	Passengers	28	64	12	100	0	70	10	60	5	349
	Pedestrians	104	107	37	58	0	26	21	46	20	419
	<b>Total</b>	<b>222</b>	<b>235</b>	<b>79</b>	<b>175</b>	<b>69</b>	<b>157</b>	<b>73</b>	<b>158</b>	<b>25</b>	<b>1,193</b>
Nov	Drivers	95	45	34	35	55	38	22	36	13	373
	Passengers	111	57	25	71	37	4	25	49	13	392
	Pedestrians	84	75	34	65	0	38	17	27	0	340
	<b>Total</b>	<b>290</b>	<b>177</b>	<b>93</b>	<b>171</b>	<b>92</b>	<b>80</b>	<b>64</b>	<b>112</b>	<b>26</b>	<b>1,105</b>
Dec	Drivers	40	68	39	46	42	67	35	39	5	381
	Passengers	71	89	83	87	97	157	26	84	16	710
	Pedestrians	91	119	33	56	0	36	30	45	14	424
	<b>Total</b>	<b>202</b>	<b>276</b>	<b>155</b>	<b>189</b>	<b>139</b>	<b>260</b>	<b>91</b>	<b>168</b>	<b>35</b>	<b>1,515</b>
Year Total	Drivers	892	641	393	365	459	487	373	474	105	4,189
	Passengers	698	863	285	614	351	752	331	769	124	4,787
	Pedestrians	1,127	1,248	509	674	207	398	315	433	67	4,978
	<b>Total</b>	<b>2,717</b>	<b>2,752</b>	<b>1,187</b>	<b>1,653</b>	<b>1,017</b>	<b>1,637</b>	<b>1,019</b>	<b>1,676</b>	<b>296</b>	<b>13,954</b>



**Road Traffic**  
Management Corporation

# ROAD TRAFFIC CALENDER REPORT

31 DECEMBER 2011





## Road Traffic Management Corporation

### **Physical Address**

Boardwalk Office Park, Boardwalk Boulevard  
Faerie Glen, 0043

### **Postal Address**

Private Bag X147, Pretoria, 0001

### **Telephone Number**

012 999 5200

### **Website Address**

[www.rtmc.co.za](http://www.rtmc.co.za)