



Road Traffic Management Corporation



Road Traffic Calendar Report 31 December 2012



transport

Department:
Transport
REPUBLIC OF SOUTH AFRICA



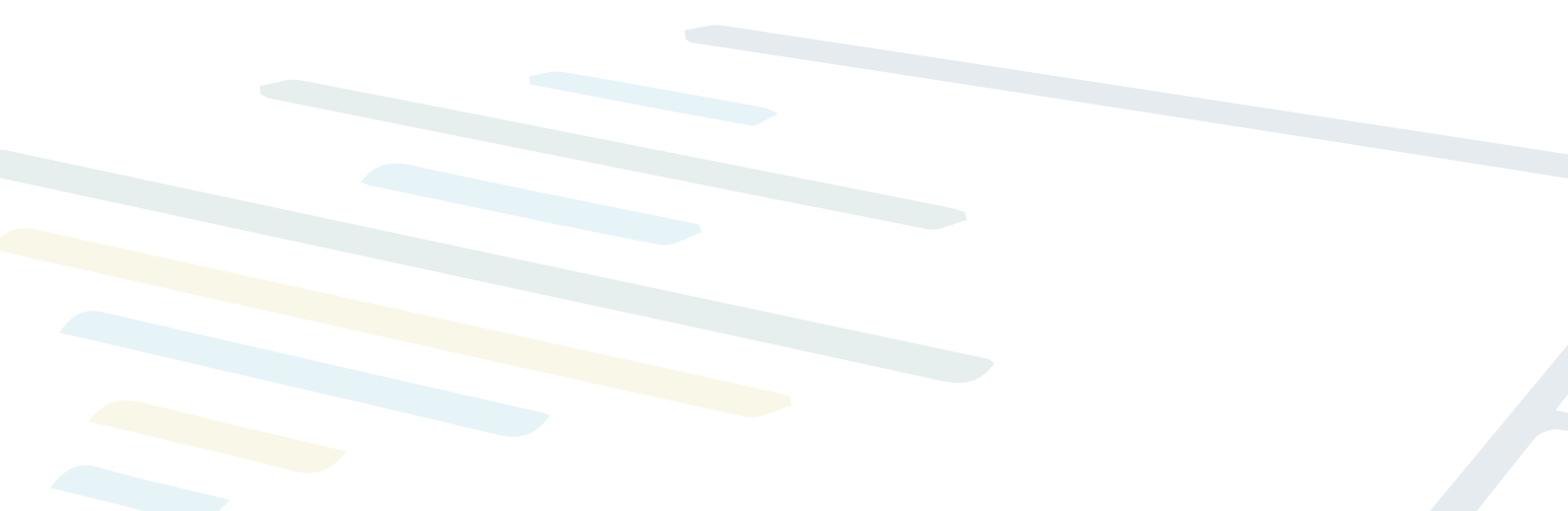
Index

Section	Topic	Page
1	Executive Summary	1
1.1	Vehicle Population	3
1.2	Driver Population	3
1.3	Fatal Crashes and Fatalities	3
1.4	Measuring Progress towards Achieving Target to Reduce Fatalities by 50% by 2015	3
2	Vehicle Population	6
2.1	Number of Registered Vehicles	6
2.2	Unroadworthy and Unlicenced Vehicles	10
2.2.1	General	10
2.2.2	Number of Unroadworthy Vehicles	13
2.2.3	Number of Unlicenced Vehicles	16
3	Driver Population	19
3.1	Number of Learner's Licences	19
3.2	Number of Driving Licences Issued and Expired	21
3.2.1	Number of Driving Licences Issued	21
3.2.2	Number of Drivers Licence cards expired	23
3.2.2	Number of Professional Driving Permits (PrDPs) Issued and Expired	24
3.3.1	Number of Professional Driving Permits (PrDPs) Issued	24
3.3.2	Number of Professional Driving Permits (PrDPs) Expired	26
4	Fatal Road Traffic Crashes and Fatalities	27
4.1	Number of Fatal Crashes	27
4.2	Number of Fatalities	30
4.3	Number of Fatalities per Road User Group	33
4.4	Severity of Fatal Crashes	37
4.5	Crash and Fatality Rates and Trends per 10 000 Vehicles	40
4.6	Fatalities per 100000 Human Population	43

5	Fatalities per Day-Of-Week, Time-Of-Day & Age-Group	45
5.1	Crashes Per Day week	45
5.2	Number of crashes per time of day	46
5.3	Fatalities per Age Group	47
6	Major Accidents Investigated	48
6.1	Number of Major Accidents Investigated	48
6.2	Crash types	49
6.3	Contributory Factors	50
6.3.1	Vehicles Factors	50
6.3.2	Road Factors	51
6.3.3	Human Factors	52

Annexures

A	Number of registered vehicles per province	ii
B-1	Number of Unroadworthy vehicles	iii
B-2	Number of Unlicenced vehicles	iv
B-3	Number of Unroadworthy and Unlicenced vehicles	v
C-1	Number of learners licences issued	vi
C-2	Number of driving licences issued	vii
C-3	Number of PrDPs issued	viii
D	Monthly number of fatal crashes per province	ix
E	Monthly number of fatalities per province	x
F	Number of fatalities per Road User Group	xi



1. Executive Summary

1.1		Vehicle Population
	1.1.1	The number of registered vehicles increased by 417,621 (4.10%) from 10,193,050 on 31 December 2011 to 10,610,671 vehicles on 31 December 2012.
	1.1.2	On a percentage basis the biggest change was for heavy trailers which increased by 4.94% to 164,908, followed by buses which increased by 4.94% to 51,686. Motorcars increased by 4.77 % to 278,478.
	1.1.3	The number of vehicles that are either unroadworthy, Unlicenced or both the total number of vehicles that are either unroadworthy, Unlicenced or both increased by 85,485 (10.67%) from 801,069 vehicles on 31 December 2011 to 886,554 vehicles on 31 December 2012.
	1.1.4	The number of Unlicenced vehicles increased by 34,004 (10.90%) from 311,824 vehicles on 31 December 2011 to 345,828 vehicles on 31 December 2012.
1.2		Driver Population
	1.2.1	The number of learner driving licences issued decreased by 28,847(2.15%) from 1,340,843 on 31 December 2011 to 1,311,996 on 31 December 2012.
	1.2.2	The number of driving licences issued increased by 472,713 (4.82%) from 9,682,452 on 31 December 2011 to 10,155,165 on 31 December 2012.
	1.2.3	The number of Professional Driving Permits (PrDPs) issued increased by 55,598 (6.77%) from 879,908 on 31 December 2011 to 939,506 on 31 December 2012.
1.3		Fatal Crashes and Fatalities
	1.3.1	Over the 12 months period from 1 January 2012 to 31 December 2012 the number of fatal crashes decreased by 252(2.24%) from 11,228 crashes over the same period the previous year 2011 to 10,977 in 2012.
	1.3.2	Over the 12-month period from 1 January 2012 to 31 December 2012 the number of fatalities decreased by 426 (3.05%) from 13954 fatalities over the same period the previous year to 13.528.

1.3.3	The driver fatalities decreased by 3861 (7.82%) from 4189 to 3861; passenger fatalities remain constant by 0.01 (0.001%) from 4787 to 4787 and pedestrian fatalities decreased by 98 (1.97%) from 4978 to 4880 over the 12 month period from 1 January 2012 to 31 December 2012.
1.3.4	During 2011 and 2012 : <ul style="list-style-type: none"> ■ driver fatalities were 30.02% and 28.54% respectively; ■ passengers 34.31% and 35.38%; and ■ pedestrians 35.67% and 36.07%.
1.3.5	The severity of fatal crashes decreased by 0.01 (0.78%) from 1.24 during 2011 to 1, 23 during 2012.
1.3.6	The number of fatal crashes per 10 000 registered motorised vehicles decreased by 0.77 (6.15%) from 12.48 during 2011 to 11.71 during 2012.
1.3.7	The number of fatalities per 10 000 registered motorised vehicles decreased by 1.07 (6.88%) from 15.50 during 2011 to 14.43 during 2012.
1.3.8	The number of fatalities per 100 000 human population decreased by 1.18 (4.27%) from 27.56 during 2011 to 26.39 during 2012.

1.4 Measuring Progress towards Achieving Target to Reduce Fatalities by 50% By 2015

Based on the 2006 Millennium Development Goals, one of the goals of the 2015 Road Traffic Safety Management Plan is to reduce the rate of accident fatalities arising from road and other transport by half by 2015. The current report will be focusing on the road fatalities, while other transport reporting will be reported on by relevant lead agencies.

In the development of the 2015 Plan it was agreed that the number of all transport fatalities for the year 2007 would be used as the benchmark on which the 50% reduction would be based. Using this benchmark and the 50% target reduction, the maximum allowable number of road fatalities per quarter per province up to the end of 2015 was calculated as continuous reduced target figures over the 8 year period. These set targets for the indicated quarters for each province and the National total, are shown in Table 1 below, shown as "Target" figures or maximum allowable number of fatalities.

Table 1: Rolling 12 months number of road fatalities per province

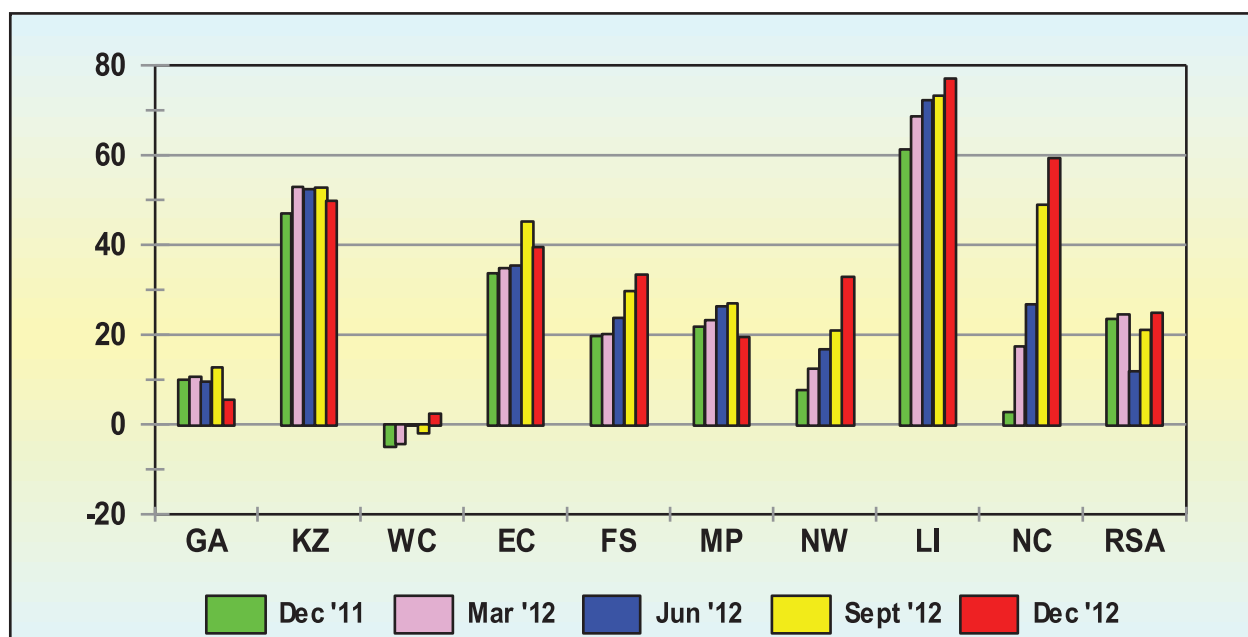
Achievement of 2015 Plan Goal to Reduce Road Fatalities by 50% by 2015											
Rolling 12 month Number of Road Fatalities per Province											
Month	Item	GA	KZ	WC	EC	FS	MP	NW	LI	NC	RSA
Dec '11	Target	2,478	1,872	1,246	1,237	848	1,346	946	1,037	287	11,295
	Actual	2,725	2,752	1,185	1,653	1,016	1,639	1,018	1,673	295	13,954
	Difference	247	880	-60	416	167	293	72	635	8	2,659
	% Diff	9.98	47.00	-4.83	33.66	19.72	21.77	7.66	61.27	2.74	23.54
Mar '12	Target	2,426	1,833	1,220	1,211	831	1,318	926	1,016	281	11,062
	Actual	2,685	2,802	1,170	1,633	998	1,624	1,041	1,713	330	13,996
	Difference	258	969	-50	422	167	306	115	697	49	2,934
	% Diff	10.65	52.88	-4.11	34.81	20.15	23.25	12.45	68.62	17.39	26.52
Jun '12	Target	2,376	1,795	1,195	1,186	814	1,291	907	995	275	10,833
	Actual	2,603	2,736	1,191	1,606	1,007	1,630	1,058	1,713	349	13,893
	Difference	227	941	-4	420	193	340	152	718	74	3,061
	% Diff	9.54	52.44	-0.32	35.39	23.73	26.34	16.71	72.22	26.79	28.25
Sept '12	Target	2,327	1,758	1,170	1,161	797	1,264	888	974	269	10,609
	Actual	2,622	2,686	1,149	1,687	1,034	1,605	1,074	1,687	401	13,945
	Difference	295	928	-21	525	237	341	186	713	132	3,336
	% Diff	12.69	52.79	-1.80	45.24	29.71	27.00	20.92	73.23	48.94	31.45
Dec '12	Target	2,279	1,722	1,146	1,137	780	1,238	870	954	264	10,389
	Actual	2,404	2,579	1,173	1,587	1,041	1,479	1,156	1,689	420	13,528
	Difference	125	858	27	450	261	241	286	735	156	3,139
	% Diff	5.50	49.82	2.39	39.52	33.39	19.47	32.89	77.01	59.35	30.21

Also shown in table 1 are the “Actual” figures, which reflect the real number of road fatalities recorded per province for the respective quarters as indicated. Both the Target and Actual figures represent the 12 month rolling total fatality figures per province and on a national basis.

The difference as well as the percentage difference figures in the table shows the difference between the set Target and Actual number of road fatalities. A difference of “0” indicates that the set target of reducing the number of fatalities was met. Differences smaller than “0” (<0) shows achievements better than what is expected or required and differences larger than “0” (>0) shows that the required targets were not achieved and reflects inadequate performance towards reaching the desired goal per quarter and ultimately the 2015 goal.

The % difference in meeting the set targets per province is also reflected in the figure below:

Figure 1: % Difference for rolling 12 months number of road fatalities per province



The information in Table 1 and Figure 1 above shows that the better performing province (differences less than “0”) that is well on track towards achieving the goal of reducing road fatalities by 50% by the year 2015, amongst others is:

- Western Cape: showing a continuous improvement in performance from -1.71% in December 2010 to -4.83% in December 2011.

The provinces that are not performing as required, (differences larger than “0”) are the following:

- Western Cape: has shown a gradual increase from its best level of – 4.83% in December 2011 to above 0, at 2, and 39% in December 2012.
- Northern Cape: overall the worst performing province, with even a continuous increase in the quarterly number of road fatalities that exceed the set quarterly targets for the province – ranging from 2% in December 2011 to 59.35% in December 2012. This province was the biggest contributor to the RSA fatalities, on a national basis not achieving its set target towards the end of the review period.
- Limpopo: made no contribution towards achieving the 2015 goals. Over the review period the performance of this province worsened from 61.27% in December 2011 to 77, and 1% in December 2012.
- National: over the review period the national figures range from 23.54% in December 2011 to 28, and 81% in December 2012.

The country’s performance towards the reduction of fatalities by 50% for the assessed period is deteriorating. The worst performing provinces listed above, contributed to this non-achieving trend, with the biggest negative influence from Northern Cape, KwaZulu-Natal, Eastern Cape and Limpopo.

With performance towards achieving the targets deteriorating, this necessitates tightened interventions and special focus in those areas especially within law enforcement and continued education campaigns.

2. Vehicle Population

2.1 Number of Registered Vehicles

The number of registered vehicles increased by 417 621 (4, 10%) from 10 193 050 on 31 December 2011 to 10 610 671 vehicles on 31 December 2012. Detail per type of vehicle is given in Table 2 below:

Table 2: Number of Registered Vehicles

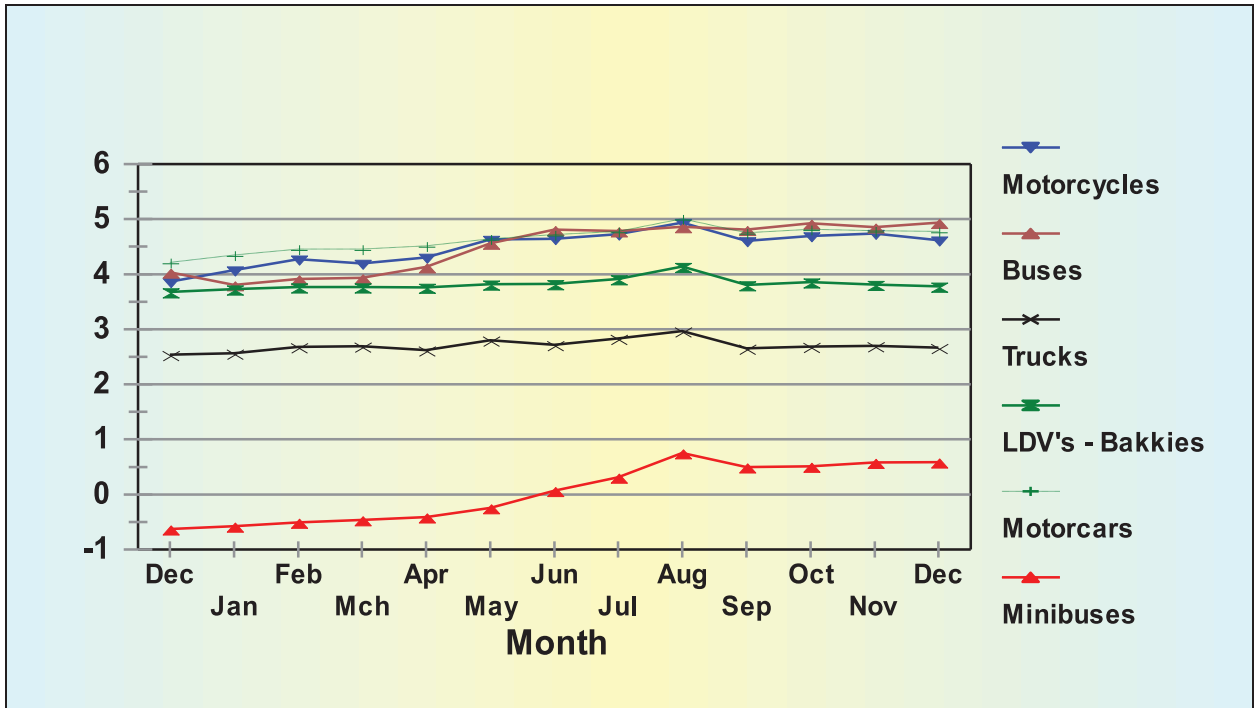
Motorised Vehicles	Number registered Dec 2011	Number registered Dec 2012	Change	% Change	% of Group Dec 2012	% of Total Dec 2012
Motorcars	5,832,078	6,110,556	278,478	4.77	64.05	57.59
Minibuses	284,184	285,855	1,671	0.59	3.00	2.69
Buses	49,253	51,686	2,433	4.94	0.54	0.49
Motorcycles	339,913	355,616	15,703	4.62	3.73	3.35
LDV's - Bakkies	2,074,363	2,152,713	78,350	3.78	22.57	20.29
Trucks	333,245	342,122	8,877	2.66	3.59	3.22
Other & Unknown	237,769	241,067	3,298	1.39	2.53	2.27
Total Motorised	9,150,805	9,539,615	388,810	4.25	100.00	89.91
Towed Vehicles						
Caravans	104,825	104,845	20	0.02	9.79	0.99
Heavy Trailers	157,140	164,908	7,768	4.94	15.40	1.55
Light Trailers	763,461	784,484	21,023	2.75	73.24	7.39
Other & Unknown	16,819	16,819	0	0.00	1.57	0.16
Total Towed	1,042,245	1,071,056	28,811	2.76	100.00	10.09
All Vehicles	10,193,050	10,610,671	417,621	4.10		100.00

The table above shows that on a percentage basis the biggest change was for buses and heavy trailers which both increased by 4.94% from 49,253 to 51 686 and 157,140 to 164,908 respectively, followed by motorcars which increased by 4.77% to 6 110 556.



The monthly percentage change over the past year for specific types of vehicles; as well as motorised and towed vehicles, is shown in the figures below:

Figure 2: Percentage monthly change in registered Motorised vehicles

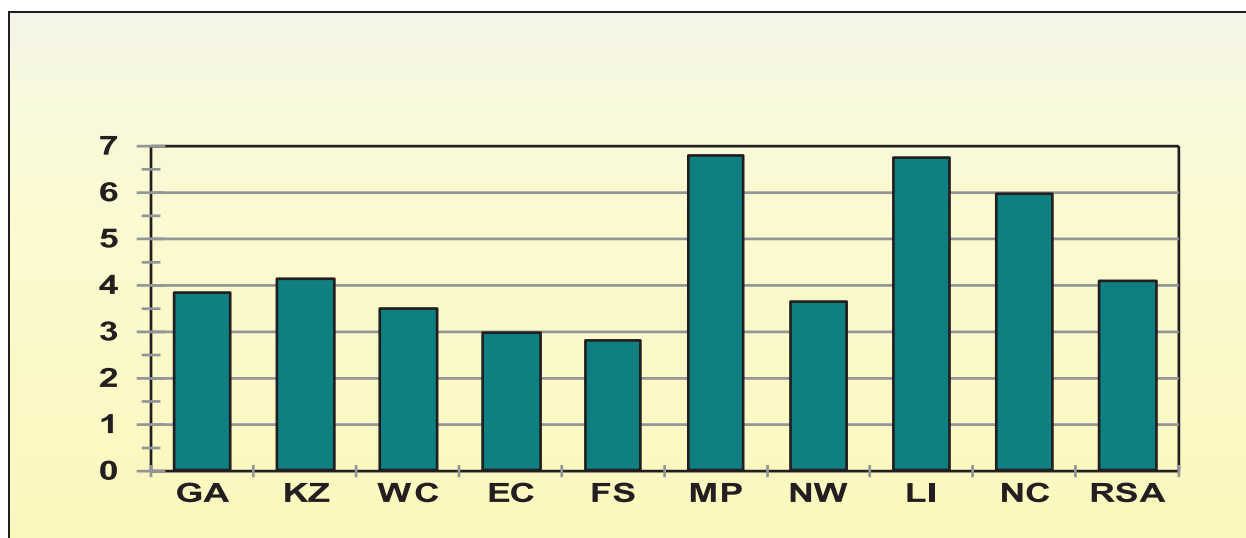


The total motor vehicle population per province for December 2011 and December 2012 respectively, is given in table 3 below; and is reflected in the graph below:

Table 3: Number of Registered Vehicles per Province

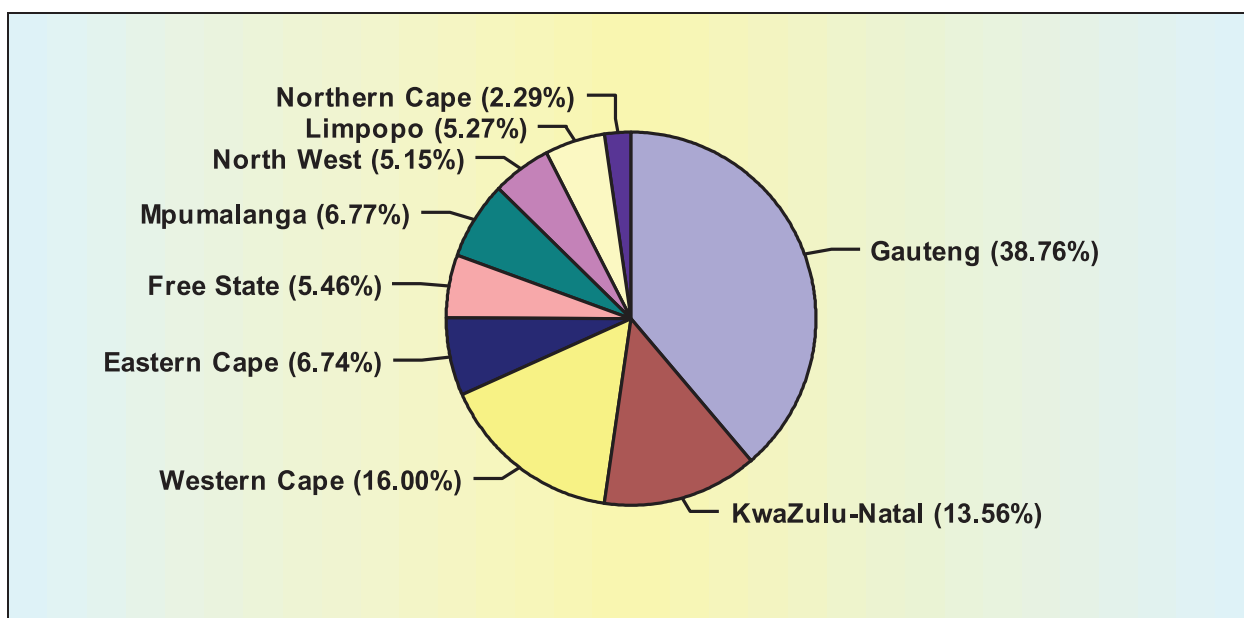
Province	Number registered Dec 2011	Number registered Dec 2012	Change	% Change	% of Total Dec 2012
Gauteng	3,960,078	4,112,343	152,265	3.85	38.76
KwaZulu-Natal	1,381,721	1,438,997	57,276	4.15	13.56
Western Cape	1,640,723	1,698,173	57,450	3.50	16.00
Eastern Cape	694,821	715,548	20,727	2.98	6.74
Free State	563,594	579,461	15,867	2.82	5.46
Mpumalanga	672,481	718,213	45,732	6.80	6.77
North West	527,402	546,669	19,267	3.65	5.15
Limpopo	523,452	558,813	35,361	6.76	5.27
Northern Cape	228,778	242,454	13,676	5.98	2.29
RSA	10,193,050	10,610,671	417,621	4.10	100

Figure 3: Percentage annual growth in vehicle population per province (2011/2012)



The percentage vehicles registered per province on 31 December 2012 is reflected in the graph below:

Figure 4: Percentage of registered vehicles per province



The information in the graph above shows that 38.76% of all vehicles are registered in Gauteng, 16, 00% in Western Cape and 13, 56% in KwaZulu-Natal.

More detailed information on the number of vehicles per type registered per province for December 2011 and December 2012 is given in the table under **Annexure A**.



2.2 Unroadworthy and Unlicenced Vehicles

2.2.1 General

Unroadworthy vehicles are defined as those of which the owners failed to submit the vehicles for compulsory annual roadworthy tests (including buses, minibus taxis and freight transport vehicles) or on change of ownership. Unlicenced vehicles are those of which the owners failed to renew the vehicle licences within the time frame allowed.

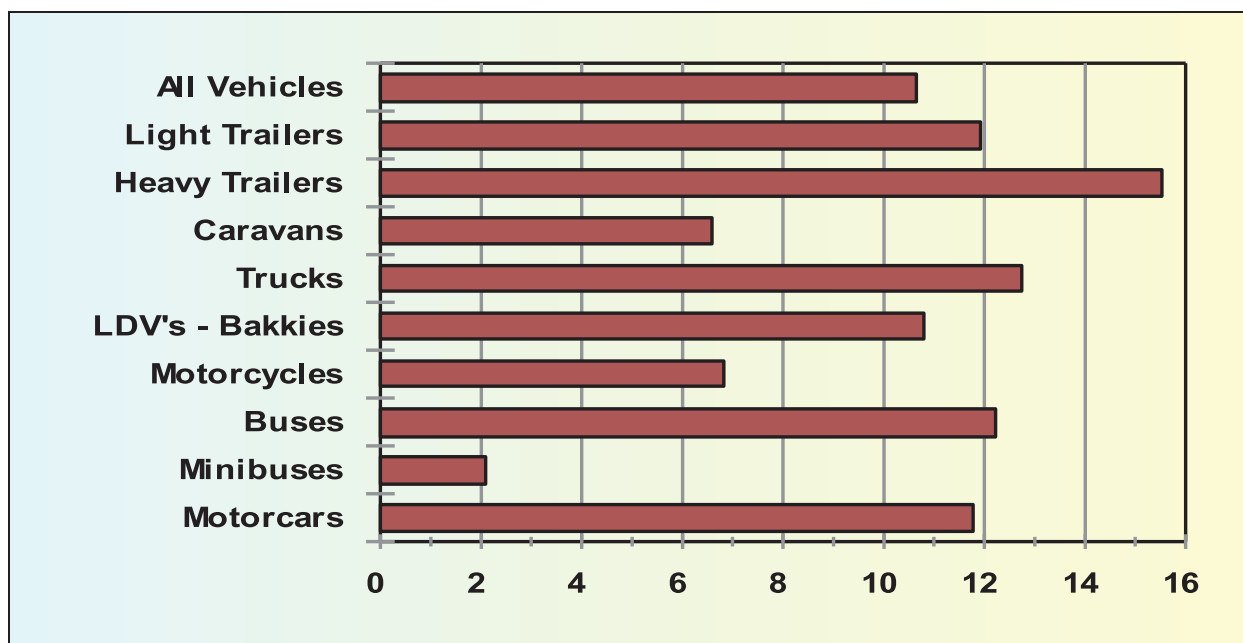
On a national basis the total number of vehicles that are either unroadworthy, Unlicenced or both increased by 85,485 (10.67%) from 801,069 vehicles on 31 December 2011 to 886,554 vehicles on 31 December 2012.

Detail in this regard per type of vehicle is provided in Table 10 and the percentage (%) change from 2011 to 2012 reflected in the graph below:

Table 4: Number of Unroadworthy, Unlicenced Vehicles or Both

Vehicle Type	Dec 2011	Dec 2012	Change	% Change
Motorcars	406,907	454,668	47,761	11.74
Minibuses	53,753	54,871	1,118	2.08
Buses	6,768	7,596	828	12.23
Motorcycles	57,718	61,646	3,928	6.81
LDV's - Bakkies	132,570	146,897	14,327	10.81
Trucks	55,635	62,731	7,096	12.75
Caravans	6,215	6,625	410	6.60
Heavy Trailers	20,223	23,368	3,145	15.55
Light Trailers	41,654	46,618	4,964	11.92
Unknown	19,626	21,534	1,908	9.72
All Vehicles	801,069	886,554	85,485	10.67

Figure 5: Percentage Change in Number of Vehicles Unroadworthy OR Unlicensed OR Both



Increases were recorded for all types of vehicles in this regard. The biggest increase was recorded for Heavy Trailers, and no decrease was recorded for Unroadworthy, Unlicensed or both.

Details on the number of vehicles that are either Unroadworthy, Unlicensed or both per province is provided in Table 5 and the percentage (%) change from 2011 to 2012 reflected in the graph below:

Table 5: Number of Vehicles that is Unroadworthy OR Unlicensed OR Both

Year	GA	KZ	WC	EC	FS	MP	NW	LI	NC	RSA
Dec 2011	331,925	112,046	91,019	53,728	50,558	59,019	45,328	43,468	13,978	801,069
Dec 2012	367,434	122,018	100,357	59,792	54,853	67,655	48,518	49,798	16,129	886,554
Change	35,509	9,972	9,338	6,064	4,295	8,636	3,190	6,330	2,151	85,485
% Change	10.70	8.90	10.26	11.29	8.50	14.63	7.04	14.56	15.39	10.67

Figure 6: Percentage Change in Number of Vehicles Unroadworthy OR Unlicensed OR Both

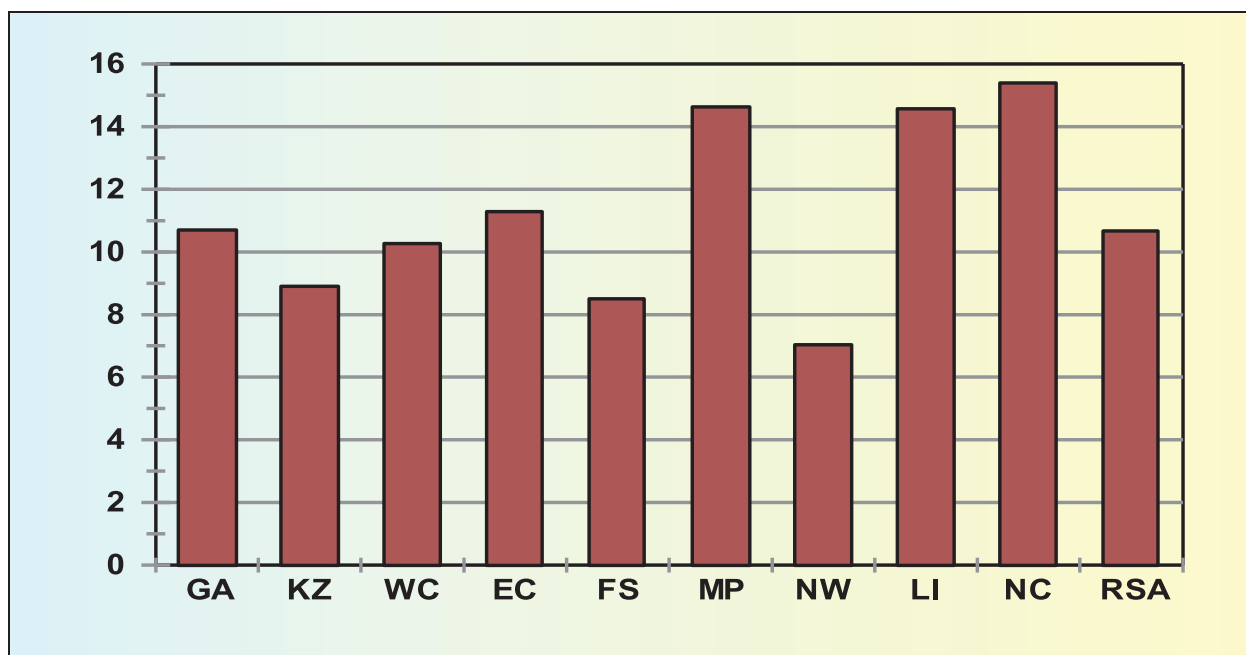
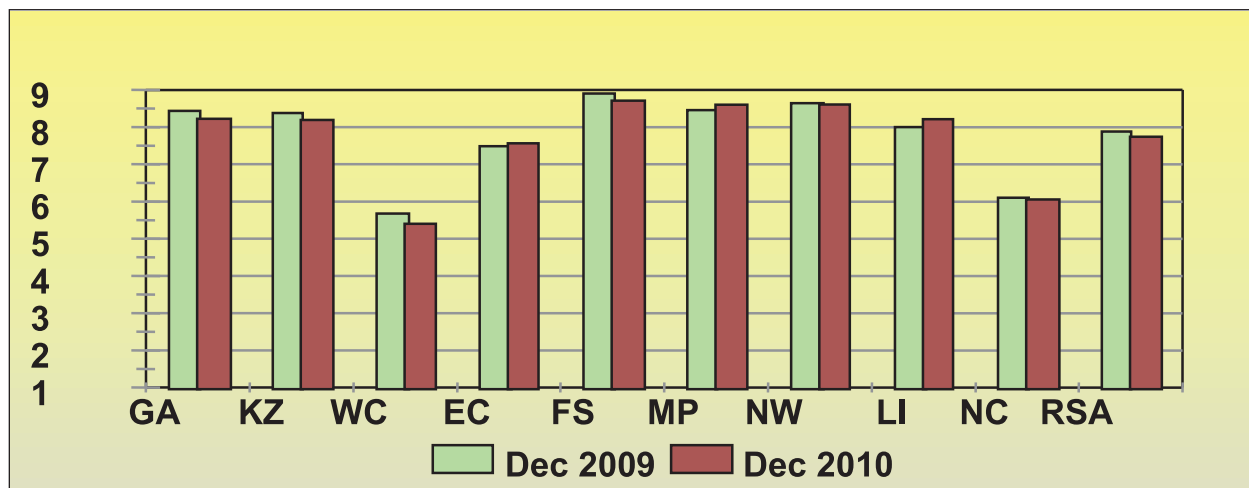


Figure 7: Percentage of Unroadworthy & Unlicensed Vehicles



All other provinces recorded an increase in this regard for the period 2011 to 2012 for the number of vehicle that are unroadworthy and unlicensed. On a provincial percentage basis the biggest increase was recorded in Northern Cape with 2151 (15.39) from 13978 to 16129 follow by Limpopo with 6330 (14.56) from 43468 to 49798.

2.2.2 Number of Unroadworthy Vehicles

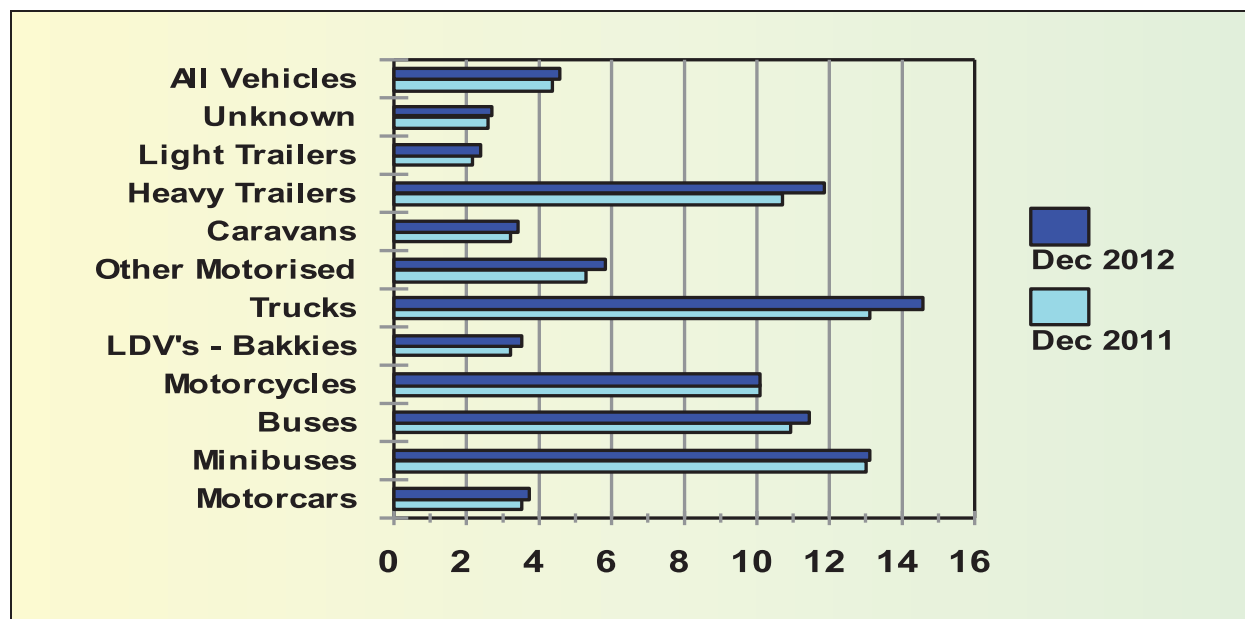
The number of vehicles that are unroadworthy (but licenced) increased by 45,636 (10.28%) from 443,740 vehicles on 31 December 2011 to 489,376 vehicles on 31 December 2012. Detail in this regard is given in Table below and the percentage of un-roadworthy vehicles per type of vehicle, as a percentage of the number registered, is reflected in the graph below:

Table 6: Number of Unroadworthy Vehicles

Vehicle Type	Dec 2011	Dec 2012	Change	% Change
Motorcars	206,180	229,416	23,236	11.27
Minibuses	36,937	37,473	536	1.45
Buses	5,355	5,904	549	10.25
Motorcycles	34,283	35,832	1,549	4.52
LDV's - Bakkies	67,747	75,223	7,476	11.04
Trucks	43,739	49,916	6,177	14.12
Caravans	3,380	3,625	245	7.25
Heavy Trailers	16,840	19,609	2,769	16.44
Light Trailers	16,701	18,373	1,672	10.01
Unknown	12,578	14,005	1,427	11.35
All Vehicles	443,740	489,376	45,636	10.28



Figure 8: Percentage of Unroadworthy Vehicles



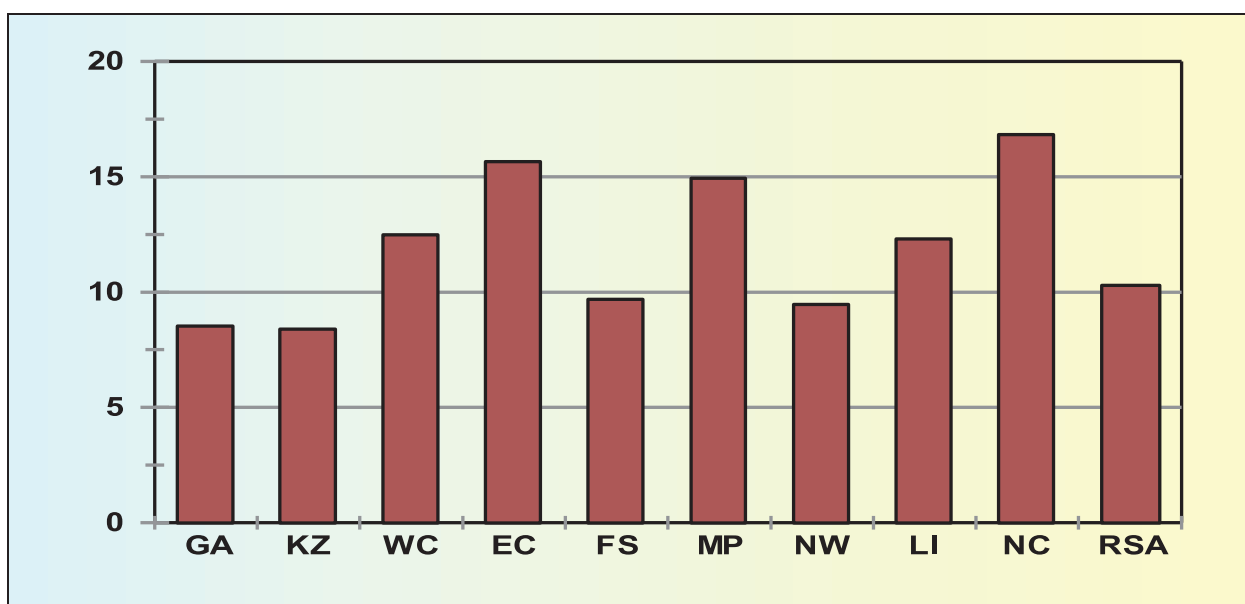
The information in the table and graph above shows that all vehicle types experienced increases in this regard. The biggest increase was recorded for Heavy Trailers which increased 2,769 (16.44%) from 16 840 at the end of December 2011 to 19 609 unroadworthy at the end of December 2012.

Detail on the number of vehicles that are unroadworthy per province is provided in Table 7 and the percentage (%) change from 2011 to 2012 reflected in the graph below:

Table 7: Number of Unroadworthy Vehicles

Year	GA	KZ	WC	EC	FS	MP	NW	LI	NC	RSA
Dec 2011	189,152	64,733	48,570	25,209	29,137	34,081	23,531	22,252	7,075	443,740
Dec 2012	205,280	70,166	54,634	29,155	31,959	39,168	25,759	24,989	8,266	489,376
Change	16,128	5,433	6,064	3,946	2,822	5,087	2,228	2,737	1,191	45,636
% Change	8.53	8.39	12.49	15.65	9.69	14.93	9.47	12.30	16.83	10.28

Figure 9: Percentage Change in Number of Vehicles that are Unroadworthy per Province

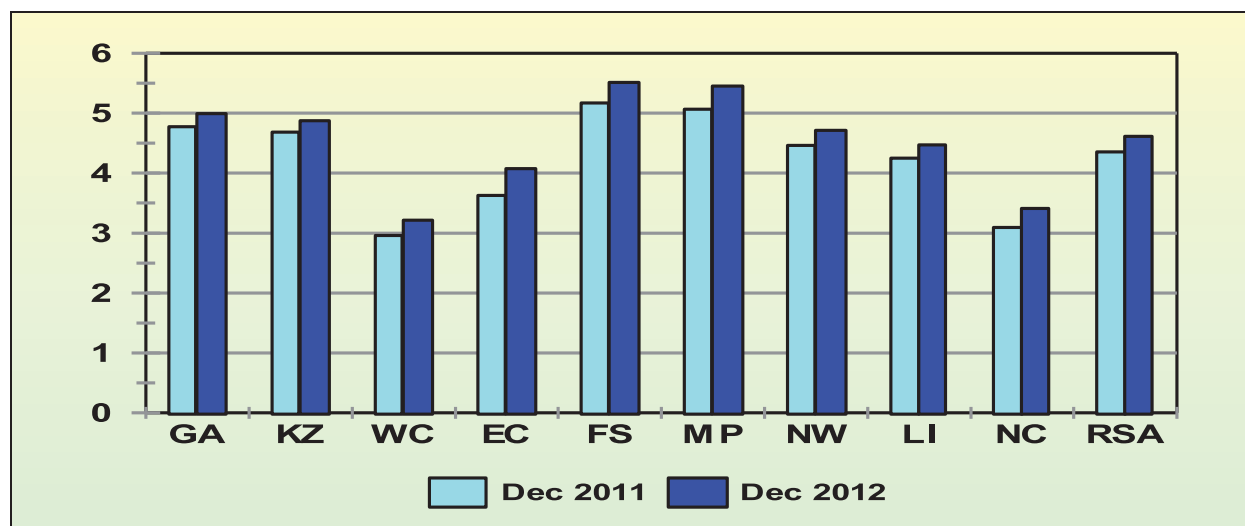


The information in the table and graph above shows that all provinces recorded an increase in the number of unroadworthy vehicles. On a percentage basis the biggest increase was recorded in North Cape where the number of unroadworthy vehicles increased by 1191 (16.83%) from 7075 in 2011 to 8 266 at the end of December 2012. Other large increases in this regard are: Eastern Cape where the number of unroadworthy vehicles increased by 3 946 (15.65%) from 25209 in 2011 to 29155 at the end of December 2012, followed by Western Cape with an increase of 12.49% followed by Mpumalanga with an increase of 14.93%.



The percentage of unroadworthy vehicles per province, expressed as a percentage of the total number of vehicles registered per province, is shown in the graph below:

Figure 10: Percentage of Unroadworthy Vehicles



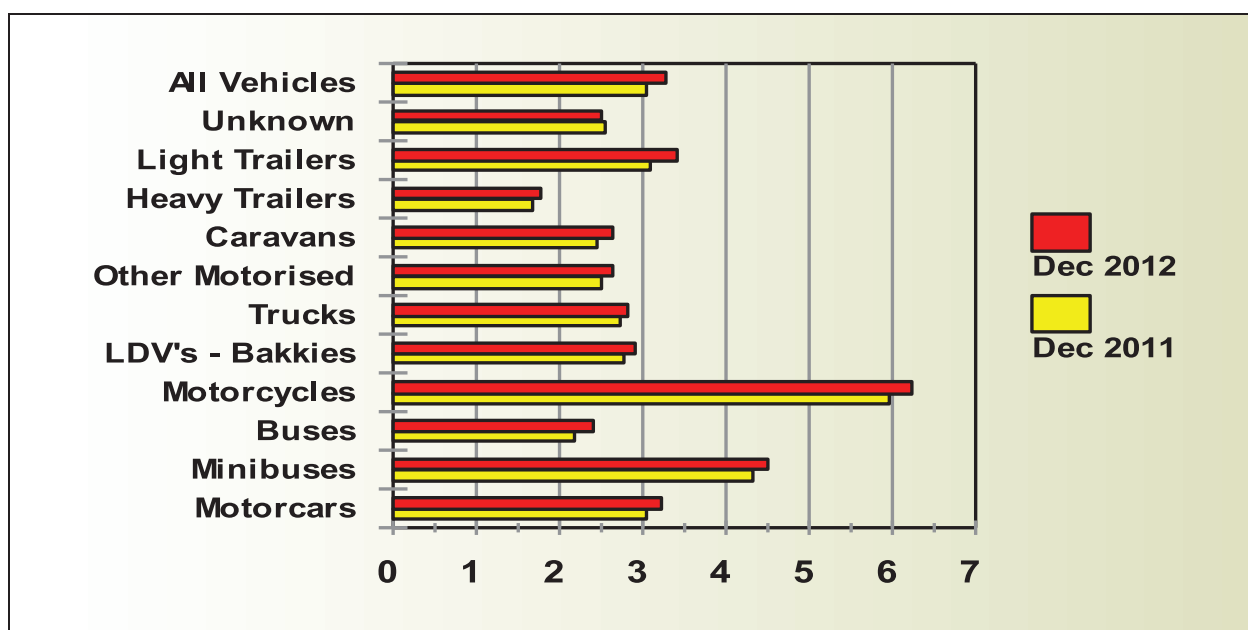
2.2.3 Number of Unlicensed Vehicles

On a national basis the number of Unlicensed vehicles increased by 34004 (10.90%) from 311824 vehicles on 31 December 2011 to 345,828 vehicles on 31 December 2012. Detail per type of vehicle in this regard is given in Table 8 and the percentage of unlicensed vehicles per type of vehicle, as a percentage of the number registered, is reflected in figure 11.

Table 8: Number of Unlicensed Vehicles

Vehicle Type	Dec 2011	Dec 2012	Change	% Change
Motorcars	176,695	197,905	21,210	12.00
Minibuses	12,329	12,873	544	4.41
Buses	1,077	1,253	176	16.34
Motorcycles	20,266	22,152	1,886	9.31
LDV's - Bakkies	57,217	62,813	5,596	9.78
Trucks	9,064	9,654	590	6.51
Caravans	2,585	2,764	179	6.92
Heavy Trailers	2,675	2,957	282	10.54
Light Trailers	23,505	26,700	3,195	13.59
Unknown	6,411	6,757	346	5.40
All Vehicles	311,824	345,828	34,004	10.90

Figure 11: Percentage of Unlicensed Vehicles



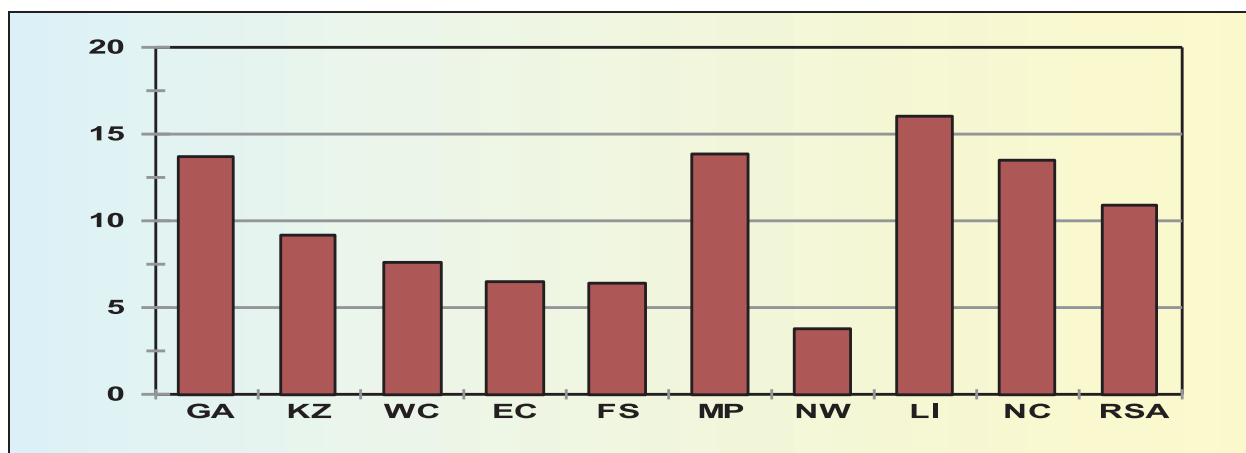
The information in the table and graph above shows that all vehicle types recorded an increase in the number of unlicensed vehicles. On a percentage basis the biggest increase was recorded for buses with 16.34% from 1,077 up to 1,253.

Detail on the number of vehicles that are Unlicensed per province is provided in Table 9 and the percentage (%) change from 2011 to 2012 reflected in the graph below:

Table 9: Number of Unlicensed Vehicles

Year	GA	KZ	WC	EC	FS	MP	NW	LI	NC	RSA
Dec 2011	126,136	40,334	37,647	25,051	18,220	21,001	19,171	18,090	6,174	311,824
Dec 2012	143,421	44,034	40,510	26,677	19,387	23,909	19,894	20,989	7,007	345,828
Change	17,285	3,700	2,863	1,626	1,167	2,908	723	2,899	833	34,004
% Change	13.70	9.17	7.60	6.49	6.41	13.85	3.77	16.03	13.49	10.90

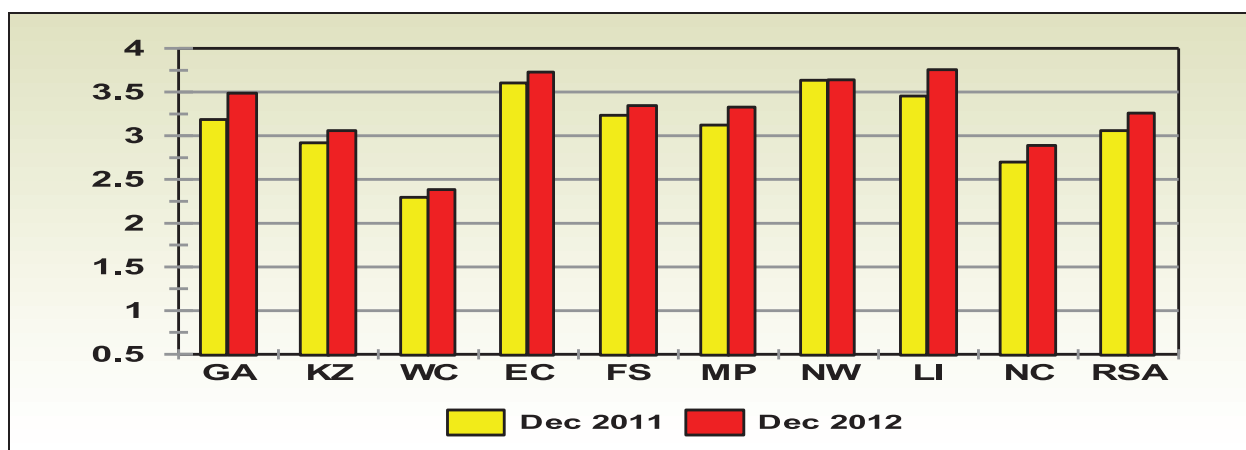
Figure 12: Percentage Change in Number of Vehicles that are Unlicensed per Province



The information in the table and graph above shows that the biggest increase in the number of Unlicensed vehicles were recorded in Gauteng (13.70%), followed by Northern Cape and Kwazulu-Natal with 13.49% and 9.17% respectively.

The percentage of unlicensed vehicles per type of vehicle, as a percentage of the number registered per province, is reflected in the graph below:

Figure 13: Percentage of Unlicensed Vehicles



Detailed information on the number of unroadworthy and unlicensed vehicles per type of vehicle per province is provided in the tables under **Annexure B**.

3. Driver Population

3.1 Number of Learner's Licences

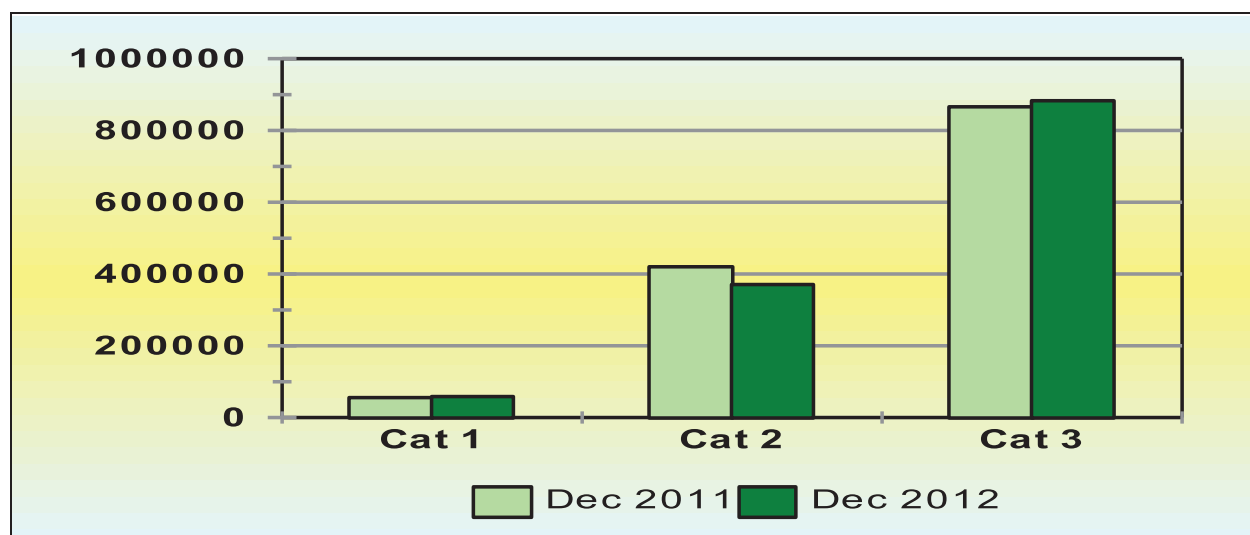
The number of learner driving licences issued decreased by 28847 (2.15%) from 1340843 on 31 December 2011 to 1311996 on 31 December 2012. Detail on the number of learner driving licences issued per category is given in Table 10 and graphically reflected in the figure below:

Table 10: Number of Learner Licences Issued

Category	Dec 2011	Dec 2012	Change	% Change
1	55,521	58,484	2,963	5.34
2	419,577	370,815	-48,762	-11.62
3	865,745	882,697	16,952	1.96
Total	1,340,843	1,311,996	-28,847	-2.15

Source: National Traffic Information System (NaTiS)

Figure 14: Number of Learner's Licences Issued



Source: National Traffic Information System (NaTiS)

Provincial information in this regard is given in Table 11 and the percentage change per province over the 12 month period is reflected in the graph below

Table 11: Number of Learner Licences Issued per Province

Year	GA	KZ	WC	EC	FS	MP	NW	LI	NC	RSA
Dec 2011	416,838	193,642	208,495	117,935	80,950	107,215	73,268	113,380	29,120	1,340,843
Dec 2012	423,756	193,916	195,059	112,136	71,472	103,341	68,866	113,940	29,510	1,311,996
Change	6,918	274	-13,436	-5,799	-9,478	-3,874	-4,402	560	390	-28,847
% Change	1.66	0.14	-6.44	-4.92	-11.71	-3.61	-6.01	0.49	1.34	-2.15

Source: National Traffic Information System (NaTIS)



3.2 Driving Licences Issued and Expired

3.2.1 Number of Driving Licences Issued

The number of driving licences issued increased by 472,713 (4.88%) from 9682452 on 31 December 2011 to 10,155,165 on 31 December 2012. Detail on the number of driving licences issued per category is given in Table 12 and graphically reflected in the figure below:

Table 12: Number of Driving Licences Issued

Category	Dec 2011	Dec 2012	Change	% Change
A	429,872	437,914	8,042	1.87
A1	123,272	123,356	84	0.07
B	1,961,788	2,135,130	173,342	8.84
C	16,822	18,001	1,179	7.01
C1	2,022,779	2,296,011	273,232	13.51
EB	3,628,141	3,632,643	4,502	0.12
EC	896,723	910,885	14,162	1.58
EC1	603,055	601,225	(1,830)	-0.30
Total	9,682,452	10,155,165	472,713	4.88



The number and percentage (%) of driving licences issued per category at the end of December 2012 is reflected in Table 13 below:

Table 13: Number and % of Driving Licences Issued per Category

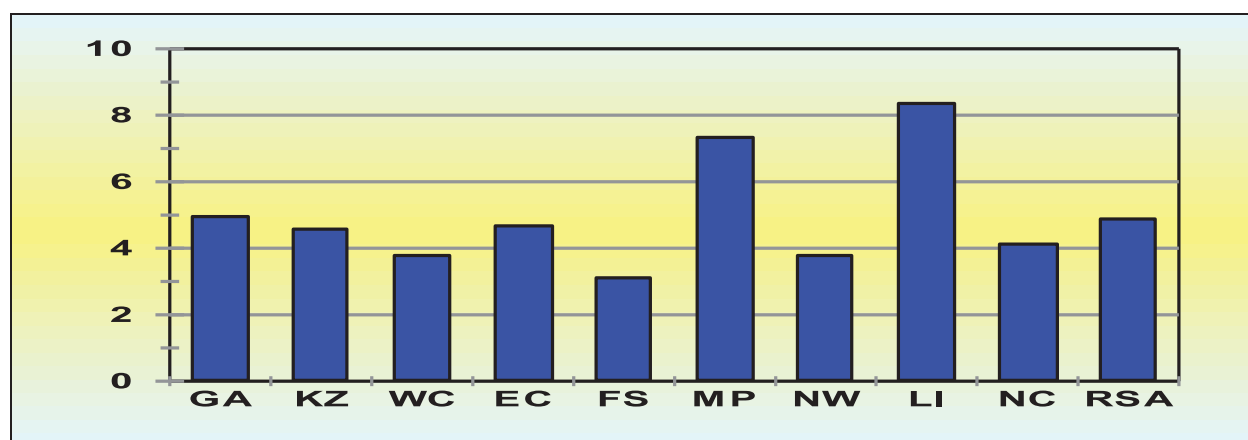
Category	Description	Number	%
A	Motorcycle < 125 cub.cm	437,914	4.31
A1	Motorcycle > 125 cub.cm	123,356	1.21
B	Motor vehicle < 3,5000 kg	2,135,130	21.03
C	Articulated motor vehicle <16,000 kg	18,001	0.18
C1	Motor vehicle 3,500 - 16,000 kg	2,296,011	22.61
EB	Articulated vehicle 3,500 - 16,000 kg	3,632,643	35.77
EC	Motorvehicle > 16,000 kg	910,885	8.97
EC1	Articulated vehicle > 16,000 kg	601,225	5.92
Total		10,155,165	100

Provincial information in this regard is given in Table 14 and the percentage change with regard to all licences issued per Province is reflected in the graph below:

Table 14: Number of Driving Licences Issued per Province

Year	GA	KZ	WC	EC	FS	MP	NW	LI	NC	RSA
Dec 2011	3,421,668	1,538,708	1,581,157	706,922	525,664	620,130	469,228	633,787	185,188	9,682,452
Dec 2012	3,591,029	1,609,119	1,640,888	739,954	542,029	665,598	486,976	686,745	192,827	10,155,165
Change	169,361	70,411	59,731	33,032	16,365	45,468	17,748	52,958	7,639	472,713
% Change	4.95	4.58	3.78	4.67	3.11	7.33	3.78	8.36	4.12	4.88

Figure 15: Percentage Change in Driving Licences Issued



3.2.2 Number of Driving Licence Cards Expired

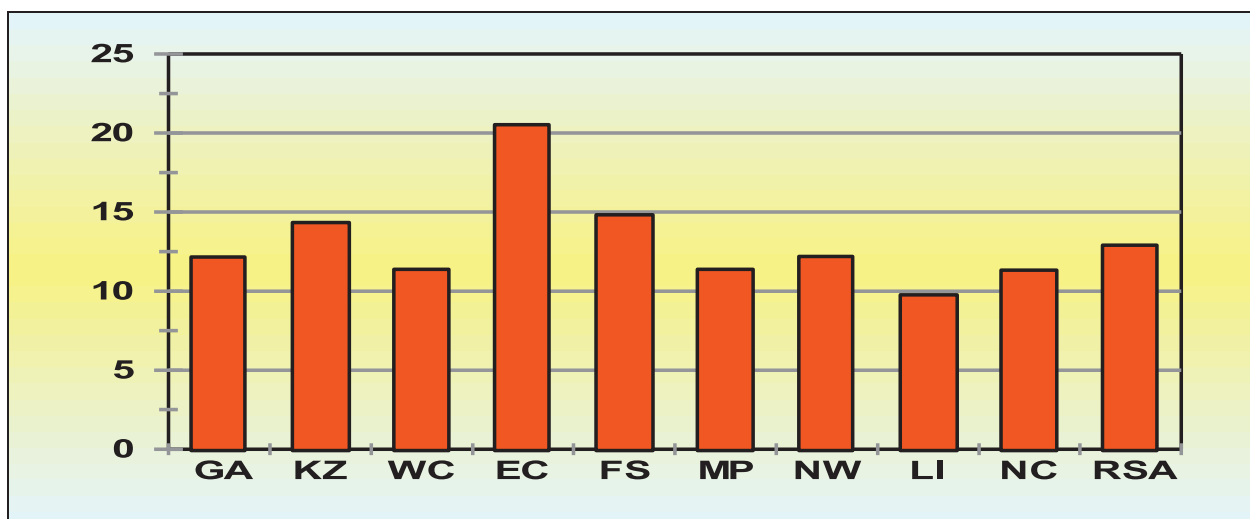
The information in Table below shows that on 31 December 2012 there were a total of 1,310,442 expired driving licence cards recorded on the National Traffic Information System (NaTIS).

This figure represents 12.90% of all driving licences issued. This information is also reflected in the graph below:

Table 15: Number of Driving Licence Cards Issued and Expired per Province

Category	GA	KZ	WC	EC	FS	MP	NW	LI	NC	RSA
On system	3,591,029	1,609,119	1,640,888	739,954	542,029	665,598	486,976	686,745	192,827	10,155,165
Not expired	3,154,388	1,378,427	1,454,089	588,085	461,654	589,829	427,596	619,682	170,973	8,844,723
Expired	436,641	230,692	186,799	151,869	80,375	75,769	59,380	67,063	21,854	1,310,442
% Expired	12.16	14.34	11.38	20.52	14.83	11.38	12.19	9.77	11.33	12.90

Figure 16: Percentage Expired Driving Licences Cards



3.3 Professional Driving Permits Issued and Expired

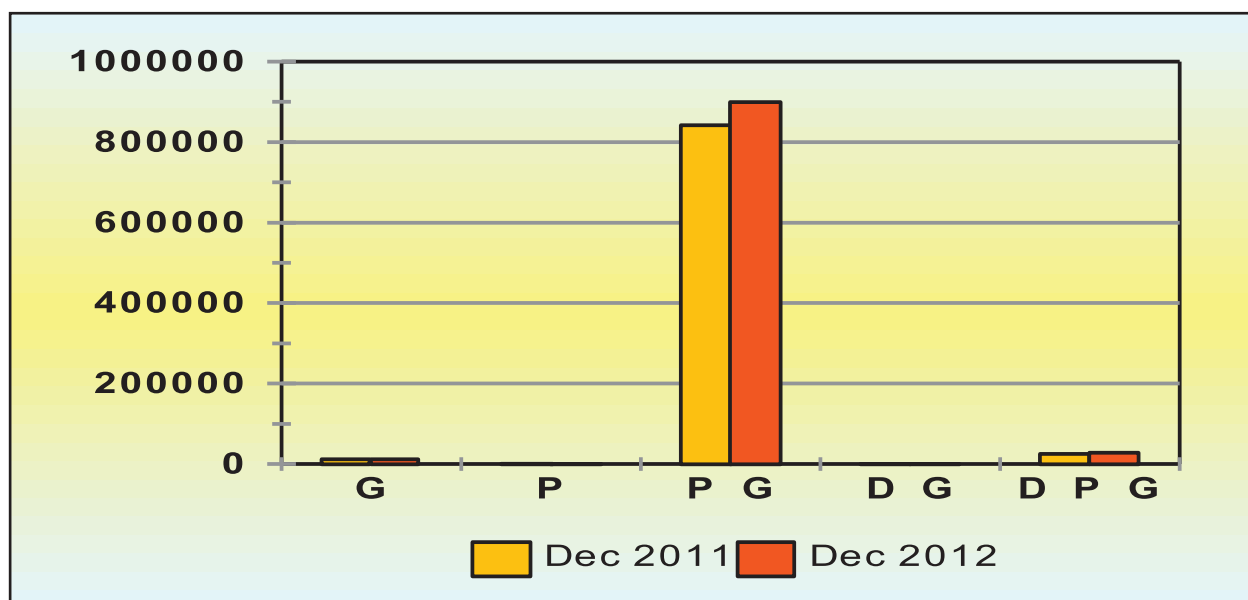
3.3.1 Number of Professional Driving Permits Issued

The number of Professional Driving Permits (PrDPs) issued increased by 59,598 (6.77%) from 879,908 on 31 December 2011 to 939,506 on 31 December 2012. Detail on the number of PrDPs issued per category is given in Table 16 and graphically reflected in the figure below.

Table 16: Number of PrDPs Issued

Category	Dec 2011	Dec 2012	Change	% Change
G	11,670	11,874	204	1.75
P	730	24	-706	-96.71
P G	842,316	899,584	57,268	6.80
D G	121	153	32	26.45
D P G	25,071	27,871	2,800	11.17
Total	879,908	939,506	59,598	6.77

Figure 17: Number of PrDPs Issued

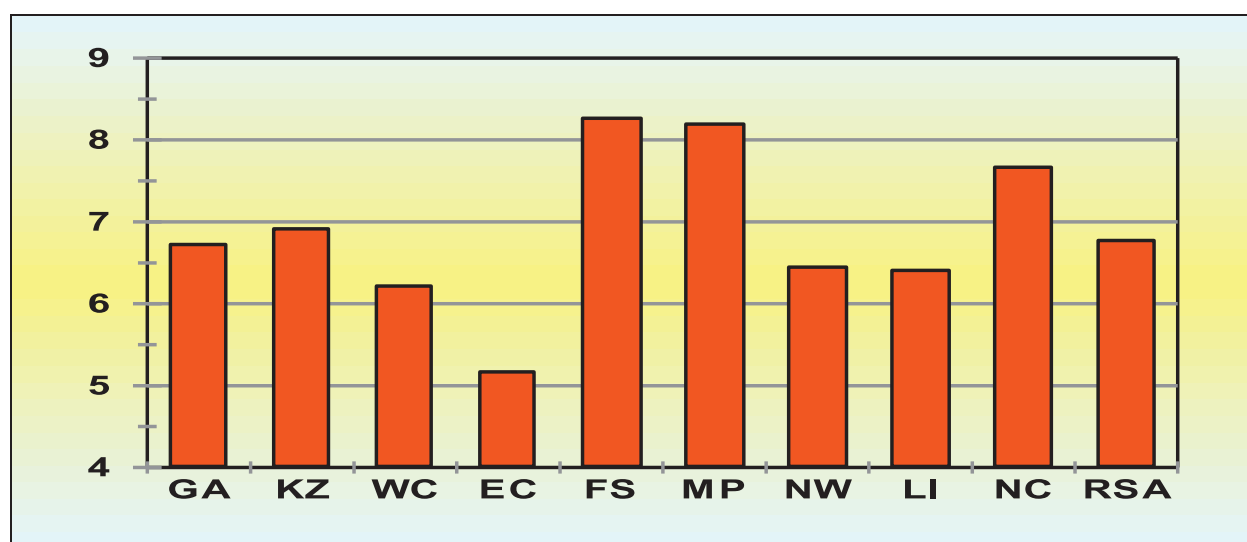


Provincial information in this regard is given in Table 17 and the percentage change with regard to all categories of PrDPs issued per province is reflected in the graph below:

Table 17: Number of Professional Driving Permits (PrDPs) Issued per Province

Year	GA	KZ	WC	EC	FS	MP	NW	LI	NC	RSA
Dec 2011	243,063	147,838	123,809	68,231	55,467	81,855	47,535	90,929	21,181	879,908
Dec 2012	259,407	158,062	131,506	71,757	60,052	88,561	50,600	96,756	22,805	939,506
Change	16,344	10,224	7,697	3,526	4,585	6,706	3,065	5,827	1,624	59,598
% Change	6.72	6.92	6.22	5.17	8.27	8.19	6.45	6.41	7.67	6.77

Figure 18: Percentage Change in Professional Driving Permits (PrDPs) Issued



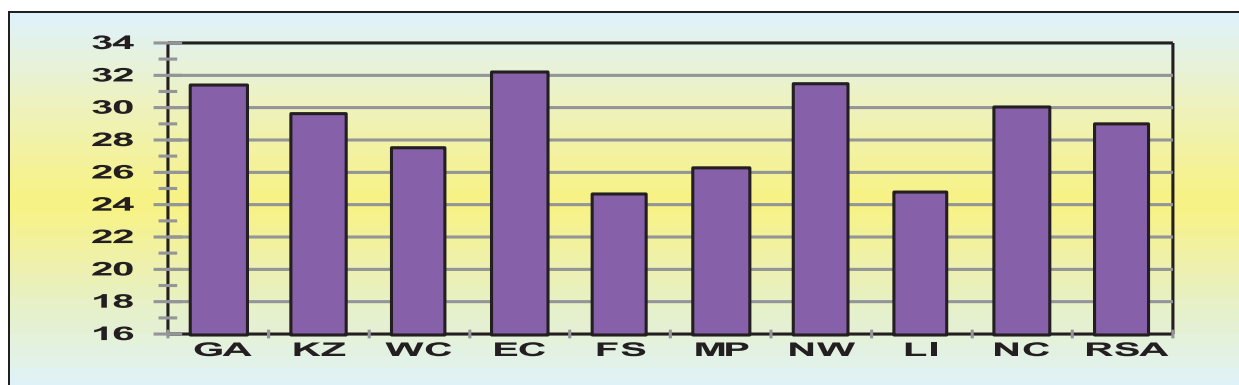
3.3.2 Number of Expired Professional Driving Permits (PrDPs)

The information in Table below shows that on 31 December 2012 there were a total of 272428 expired Professional Driving Permits (PrDPs) recorded on the NaTIS. This figure represents 29.00% of all PrDPs issued. This information is also reflected in the graph below:

Table 18: Number of Professional Driving Permits (PrDPs) Issued and Expired per Province

Category	GA	KZ	WC	EC	FS	MP	NW	LI	NC	RSA
On system	259,407	158,062	131,506	71,757	60,052	88,561	50,600	96,756	22,805	939,506
Not expired	177,946	111,233	95,315	48,643	45,245	65,290	34,671	72,780	15,955	667,078
Expired	81,461	46,829	36,191	23,114	14,807	23,271	15,929	23,976	6,850	272,428
% Expired	31.40	29.63	27.52	32.21	24.66	26.28	31.48	24.78	30.04	29.00

Figure 19: Percentage of Expired Professional Driving Permits (PrDPs)



Detailed information on the number of learner licences, driving licences and PrDPs per province is provided in the tables under **Annexure C**.

4. Fatal Road Traffic Crashes and Fatalities

4.1 Number of Fatal Crashes

Over the 12 months period from 1 January 2012 to 31 December 2012 the number of fatal crashes decreased by 252(2.24%) from 11,228 crashes over the same period the previous year 2011 to 10,977 in 2012. Provincial detail in this regard is given in Table 19 below.

Table 19: Number of Fatal Crashes per Province over 12 Month Period

Year	GA	KZ	WC	EC	FS	MP	NW	LI	NC	RSA
2011	2,321	2,281	1,039	1,312	813	1,132	844	1,224	262	11,228
2012	2,037	2,214	1,004	1,206	782	1,149	910	1,324	351	10,977
change	-284	-67	-35	-106	-32	17	66	100	89	-252
% change	-12.24	-2.94	-3.37	-8.08	-3.93	1.50	7.82	8.17	33.97	-2.24

decreases in the number of fatal crashes were recorded in the following three provinces:

- Gauteng: a decrease of 284(12.24) from 2,321 to 2,037;
- Eastern Cape: a decrease of 106(8.08%) from 1,312 to 1,206;
- Free State: a decrease of 32(3.93%) from 814 to 782.

Increases over the 12 months period from 1 January 2012 to December 2012 were recorded for the following three provinces:

- Northern Cape: an increase of 89 (33.97%) from 262 to 351;
- Limpopo : an increase of 100 (8.17) from 1,224 to 1,324;
- North West: an increase of 66 (7.82%) from 844 to 910.

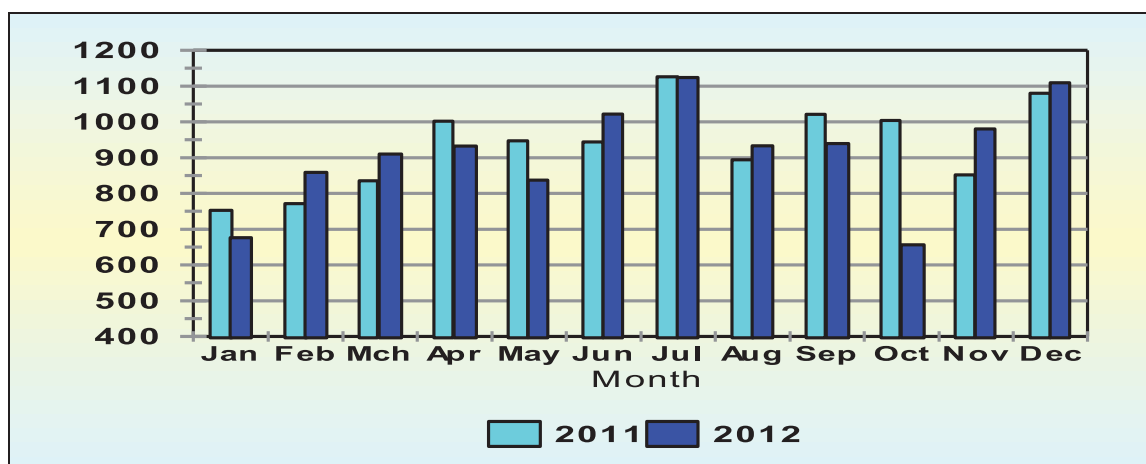


The monthly number of fatal crashes over the two comparative 2 year periods is graphically reflected in the figure below:

Table 20: Monthly Number of Fatal Crashes

Month	2011	2012	Change	% change
Jan	753	676	-77	-10.23
Feb	771	859	88	11.41
Mch	835	910	75	8.98
Apr	1,002	932	-70	-6.99
May	947	837	-110	-11.62
Jun	944	1,022	78	8.26
Jul	1,126	1,124	-2	-0.18
Aug	894	933	39	4.36
Sep	1,021	939	-82	-8.03
Oct	1,004	656	-348	-34.66
Nov	852	980	128	15.02
Dec	1,080	1,109	29	2.69
Total	11,229	10,977	-252	-2.24

Figure 20: Number of Fatal Crashes per Month



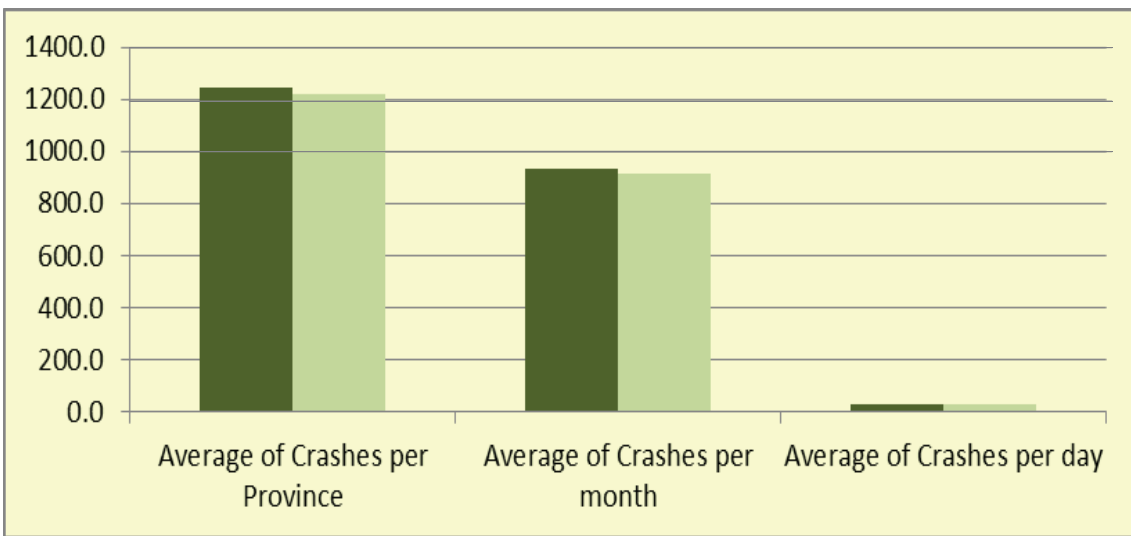
The number of fatal crashes per month per province is given in the table attached under **Annexure D**

The table 21 and figure 21 below shows the different averages of fatal crashes per province, per month and per day. The information shows that on average more than 1,247.67 fatal crashes were recorded per province during 2011 and 1,219.67 during 2012, more than 914.75 crashes per month and more than 30.07 per day.

Table 21: Averages for Fatal Crashes

Year	Total Number of Fatal Crashes per year	Average of Crashes per Province	Average of Crashes per month	Average of Crashes per day
2011	11,229	1,247.67	935.75	30.76
2012	10,977	1,219.67	914.75	30.07

Figure 21: fatal crashes averages



4.2 Number of Fatalities

Over the 12 month period from 1 January 2012 to 31 December 2012 the number of fatalities decreased by 426 (3.05%) from 13954 fatalities over the same period the previous year to 13,528. Provincial detail in this regard is given in Table 22.

Table 22: Number of Fatalities per Province over 12 Month Period

Year	GA	KZ	WC	EC	FS	MP	NW	LI	NC	RSA
2011	2,717	2,752	1,187	1,653	1,017	1,637	1,019	1,676	296	13,954
2012	2,404	2,579	1,173	1,587	1,041	1,479	1,156	1,689	420	13,528
change	-313	-173	-14	-66	24	-158	137	13	124	-426
% Change	-11.52	-6.29	-1.18	-3.99	2.36	-9.65	13.44	0.78	41.89	-3.05

With the exception of North West, Limpopo, Free State and Northern Cape all provinces recorded decrease in fatalities. On a provincial percentage basis the biggest decreases were recorded as follows:

- Gauteng: a decrease of 313 (11.52%);
- Mpumalanga: a decrease of 158 (9.65%) ; and
- Kwazulu-Natal: a decrease of 173(6.29).

In the Northern Cape the number of fatalities increased by 126(42.66%) from 295 to 354 and in North West the number of fatalities increased by 138 (13.53%) from 1018 to 1156.

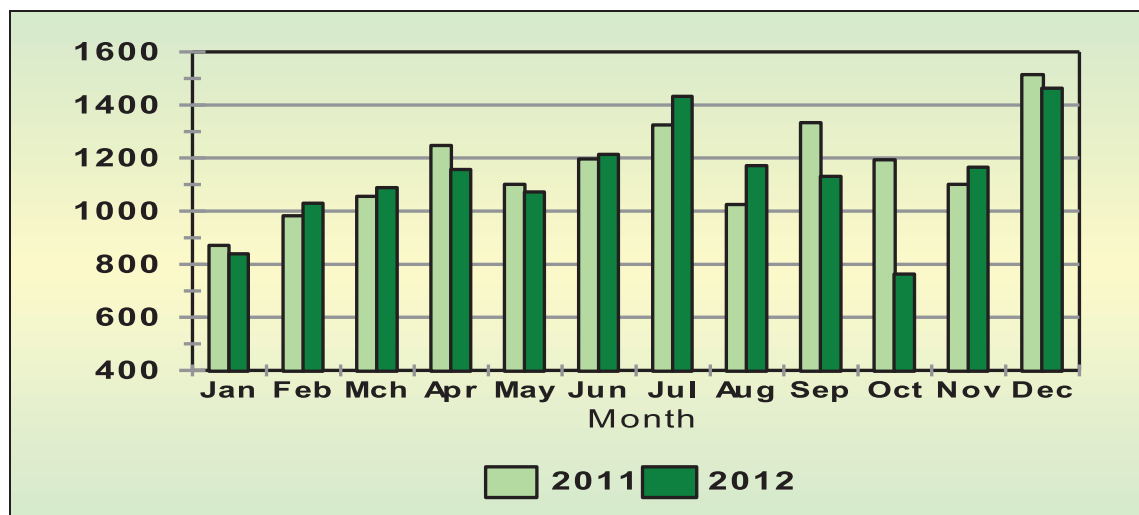


The national monthly number of fatalities over the 12-month period is graphically reflected in the figure below.

Table 23: Monthly Number of Fatalities

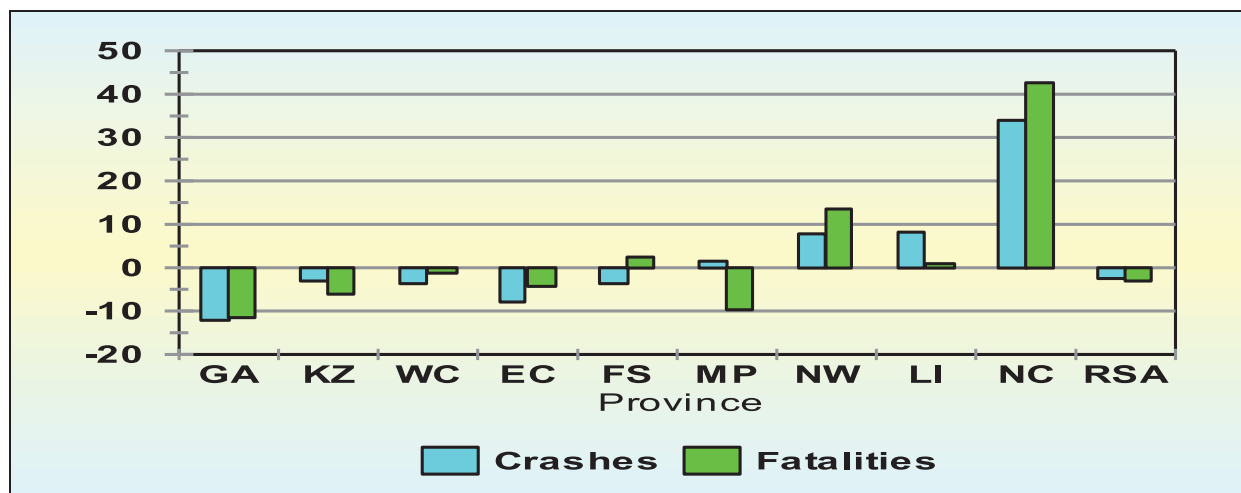
Month	2011	2012	Change	% change
Jan	871	839	-33	-3.73
Feb	982	1,030	48	4.90
Mch	1,056	1,089	33	3.14
Apr	1,248	1,157	-91	-7.27
May	1,102	1,072	-29	-2.67
Jun	1,196	1,214	18	1.51
Jul	1,324	1,433	108	8.16
Aug	1,025	1,171	146	14.25
Sep	1,333	1,131	-203	-15.20
Oct	1,194	763	-430	-36.05
Nov	1,101	1,166	65	5.87
Dec	1,515	1,463	-51	-3.40
Total	13,947	13,528	-419	-3.00

Figure 22: Number of Fatalities per Month



The percentage change in the number of fatal crashes and fatalities over the 12 month period from 1 January to 31 December for 2012 in comparison with 2011 per province is reflected in the graph below:

Figure 23: % Change in Crashes & Fatalities



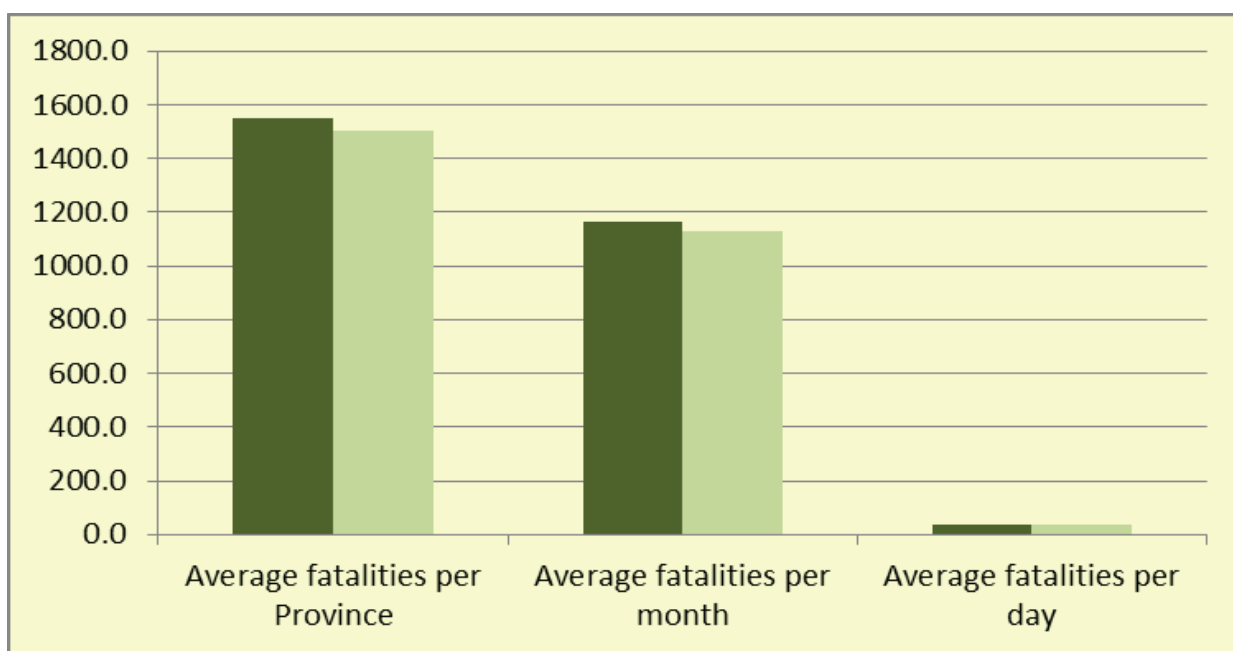
The number of fatalities per month per province is given in the table attached under **Annexure E**.

The table 24 and figure 24 below shows the different averages of fatalities per province, per month and per day. The information shows that on average more than 1549.7 fatalities were recorded per province during 2011 and 1503.1 during 2012, more than 1127.3 fatalities per month and more than 37.1 per day.

Table 24: Fatalities averages

Year	Total Number of Fatalities per year	Average fatalities per Province	Average fatalities per month	Average fatalities per day
2011	13,954	1550.4	1162.8	38.2
2012	13,528	1503.1	1127.3	37.1

Figure 24 : Averages of fatalities



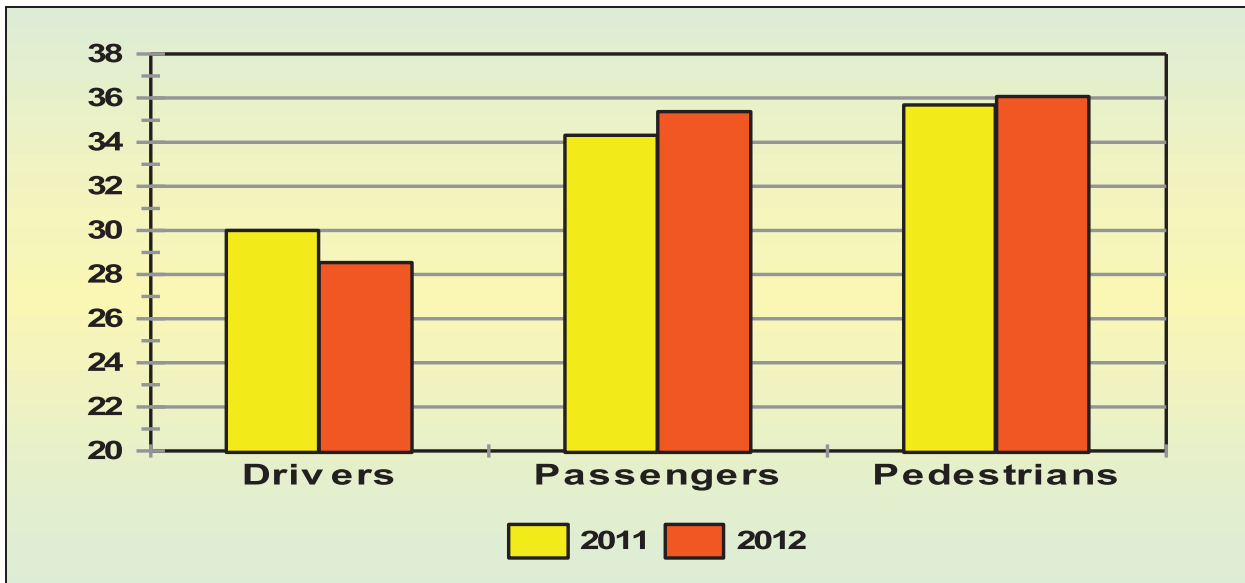
4.3 Number of Fatalities per Road User Group

Table 25: Number of Fatalities per Road User Group

User Group	2011	2012	Change	% Change
Drivers	4,189	3,861	-328	-7.82
Passengers	4,787	4,787	-0	-0.01
Pedestrians	4,978	4,880	-98	-1.97
Total	13,954	13,528	-426	-3.05

The percentage of fatalities per road user group for the two comparative years is reflected in the figure and table below. During 2011 and 2012 driver fatalities were (30.02% and 28.54%), passengers (34.31% and 35.38%) and pedestrians (35.67% and 36.07% of all fatalities.

Figure 25: Percentage Fatalities per Road User Group



The percentage change in all fatalities per province is shown in the figure below:

Figure 26: Percentage Change in All Fatalities

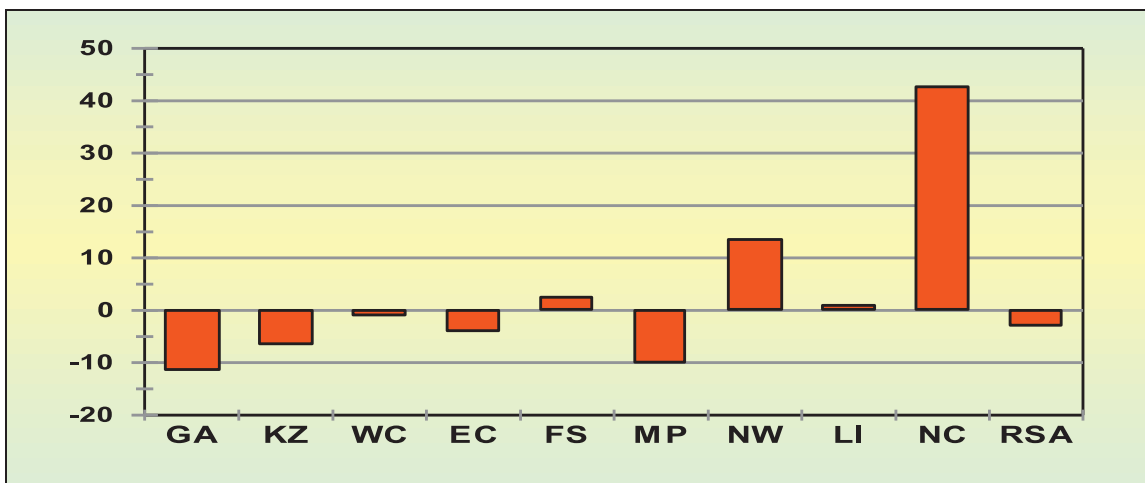
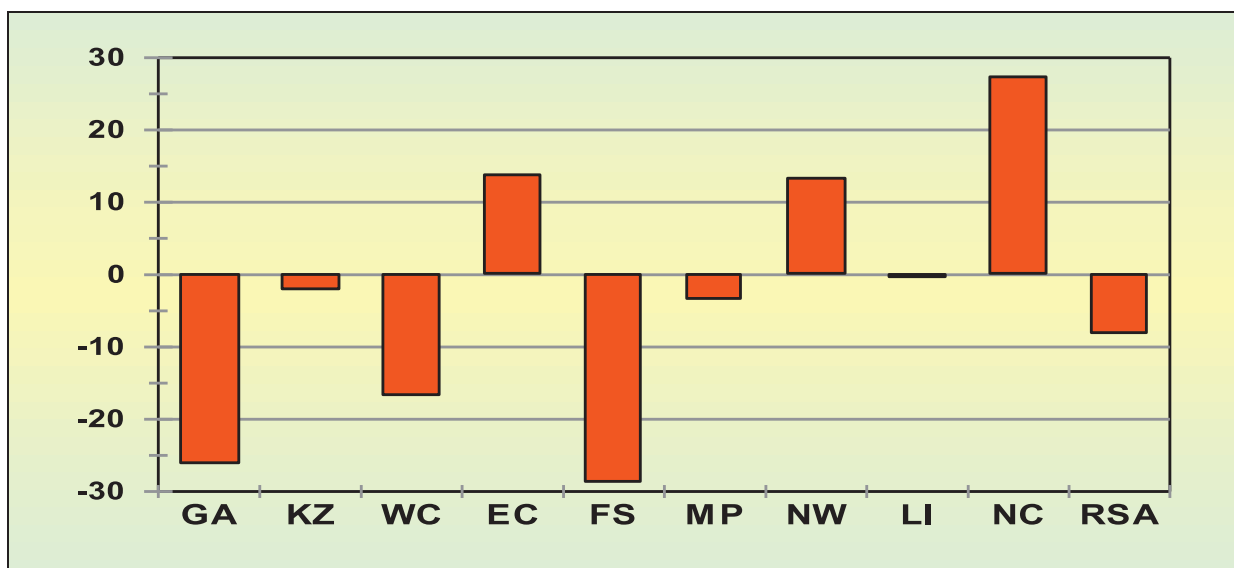


Table 26: Number of Fatalities per Road User Group over 12 Month Period

Number of Fatalities per Road User Group over 12 Month Period											
Year	User Group	GA	KZ	WC	EC	FS	MP	NW	LI	NC	RSA
2011	Drivers	892	641	393	365	459	487	373	474	105	4,189
	Passengers	698	863	285	614	351	752	331	769	124	4,787
	Pedestrians	1,127	1,248	509	674	207	398	315	433	67	4,978
	Total	2,717	2,752	1,187	1,653	1,017	1,637	1,019	1,676	296	13,954
2012	Drivers	662	628	327	415	328	472	423	472	134	3,861
	Passengers	627	695	357	647	493	602	426	752	188	4,787
	Pedestrians	1,115	1,256	489	525	220	405	307	465	98	4,880
	Total	2,404	2,579	1,173	1,587	1,041	1,479	1,156	1,689	420	13,528
Change	Drivers	-230	-13	-66	50	-131	-15	50	-2	29	-328
	Passengers	-71	-168	72	33	142	-150	95	-17	64	-0
	Pedestrians	-12	8	-20	-149	13	7	-8	32	31	-98
	Total	-313	-173	-14	-66	24	-158	137	13	124	-426
% Change	Drivers	-25.77	-1.98	-16.70	13.79	-28.51	-3.14	13.33	-0.42	27.36	-7.82
	Passengers	-10.18	-19.42	25.13	5.31	40.44	-19.99	28.85	-2.26	51.90	-0.01
	Pedestrians	-1.04	0.61	-3.92	-22.10	6.18	1.84	-2.64	7.38	46.41	-1.97
	Total	-11.51	-6.28	-1.18	-3.99	2.35	-9.67	13.43	0.75	41.95	-3.05

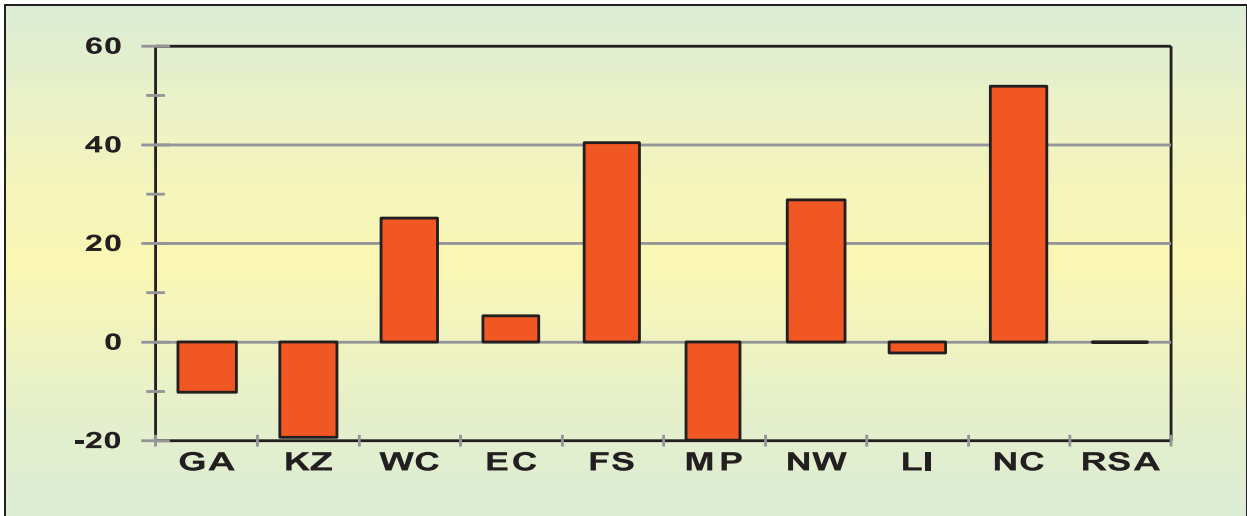
The percentage (%) changes in fatalities per specific road user group from 2011 to 2012 per province are also reflected in the figures below.

Figure 27: Percentage Change in Driver Fatalities



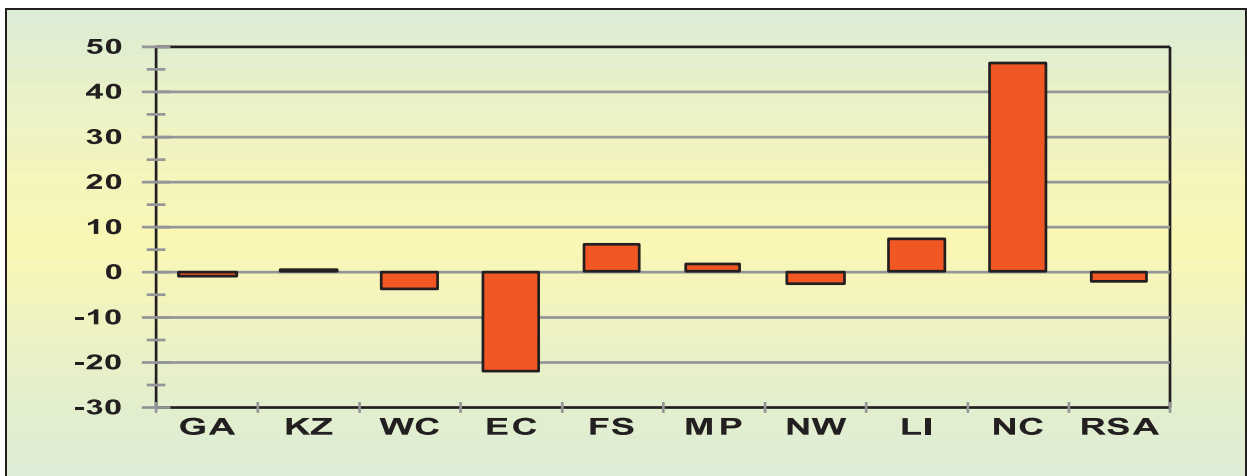
The information in the graph above shows that the biggest increase in the number of driver fatalities was recorded in Northern Cape with 27.36%, followed by Eastern Cape with an increase of 13.79%. The biggest decrease in driver fatalities was recorded in the Free State (28.51%).

Figure 28: Percentage Change in Passenger Fatalities



The information in the graph above shows that the biggest increase in the number of passenger fatalities was recorded in the Northern Cape with an increase of 51.90%, followed by Free State with an increase of 40.44%. The biggest decrease was recorded in Mpumalanga with 19.99%, followed with KwaZulu-Natal with 19.42%.

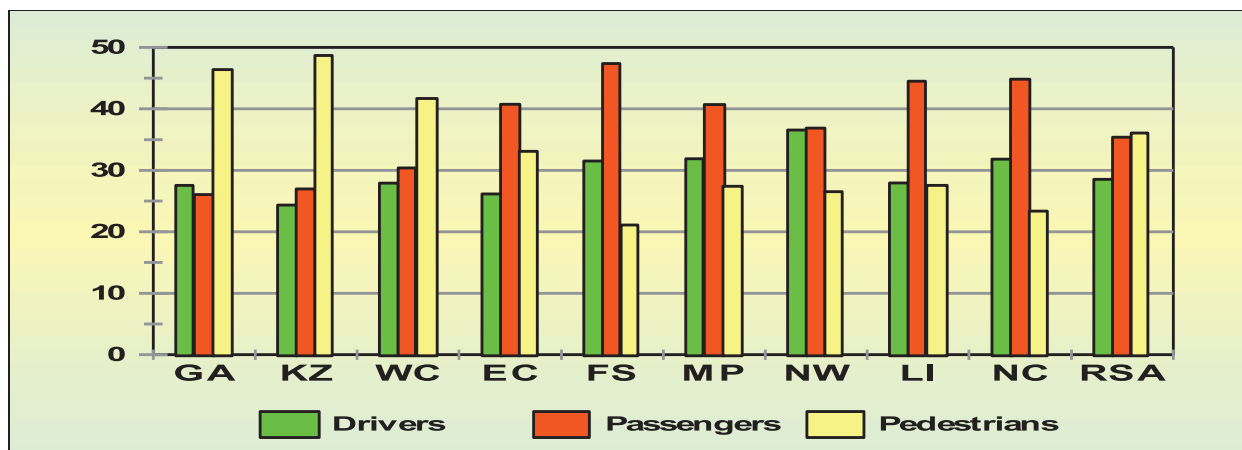
Figure 29: Percentage Change in Pedestrian Fatalities



The information in the graph above shows that, on a percentage basis, the biggest increase in the number of pedestrian fatalities was recorded in the Northern Cape with an increase of 46.41% followed by Limpopo with 7.38%. A decrease of 22.10% was recorded in the Eastern Cape and Western Cape with 3.92%.

The combined percentages of road user group fatalities (drivers, passengers and pedestrians) per province for 2012 is also reflected in the graph below:

Figure 30: % Fatalities per Road User Group



The information in the graph above shows that in Gauteng, KwaZulu-Natal and the Western Cape the main fatality groups were pedestrians on average 40, 63% of all fatalities. In the other 6 provinces the main fatality groups were passengers – on average 46, 05% of all fatalities. (In these 6 provinces the average pedestrian fatalities were 24, 21% of all fatalities).

More detail on the number of fatalities per road user group per month per province for 2009 and 2012 is given in the table attached under **Annexure E**.

4.4 Severity of Fatal Crashes

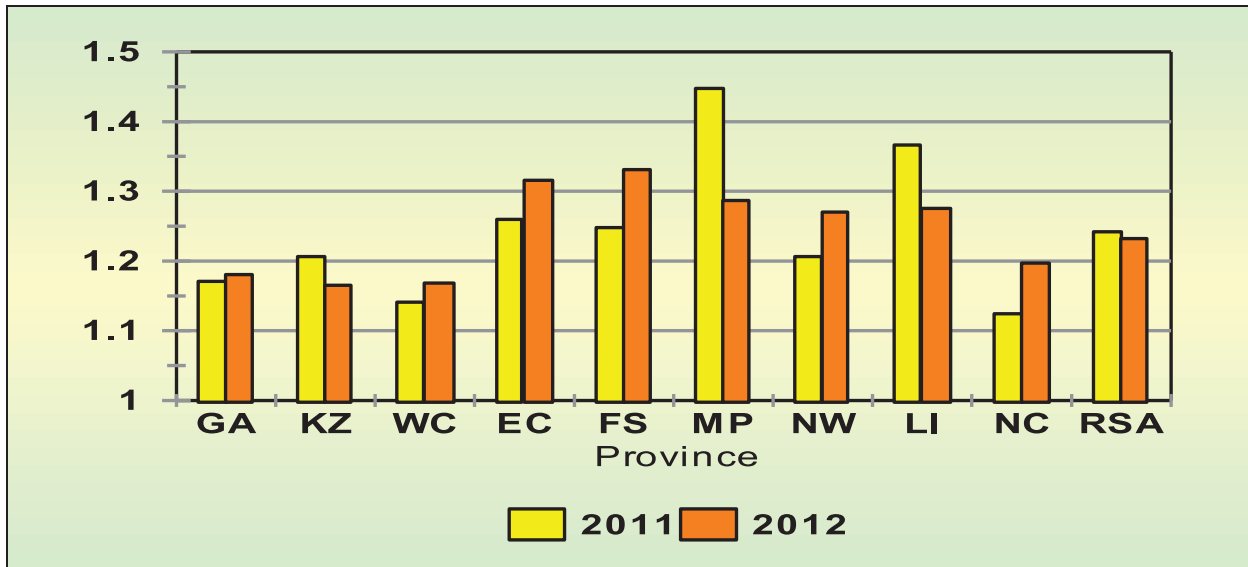
The severity of fatal crashes decreased by 0, 01 (0.78%) from 1, 24 during 2011 to 1, 23 during 2012. The individual provincial severity rates are shown in Table 27 below.

Table 27: Severity of Crashes per Province (Av no. of fatalities/crash)

Year	GA	KZ	WC	EC	FS	MP	NW	LI	NC	RSA
2011	1.17	1.21	1.14	1.26	1.25	1.45	1.21	1.37	1.12	1.24
2012	1.18	1.16	1.17	1.32	1.33	1.29	1.27	1.28	1.20	1.23
change	0.01	-0.04	0.03	0.06	0.08	-0.16	0.06	-0.09	0.07	(0.01)
% change	0.82	-3.42	2.40	4.45	6.67	-11.09	5.30	-6.67	6.48	-0.78

The information in the table above shows that the severity rate in Free State increased by 0, 08 (6.67%) from 1, 25 to 1, 33; followed by the Northern Cape with an increase of 6.48%. The rate in Eastern Cape decreased by 4, 45% followed by KwaZulu-Natal with 3, 42%. The provincial rates for the two comparative years in this regard are also reflected in the figure below.

Figure 31: Crash Severity (Persons killed/crash)

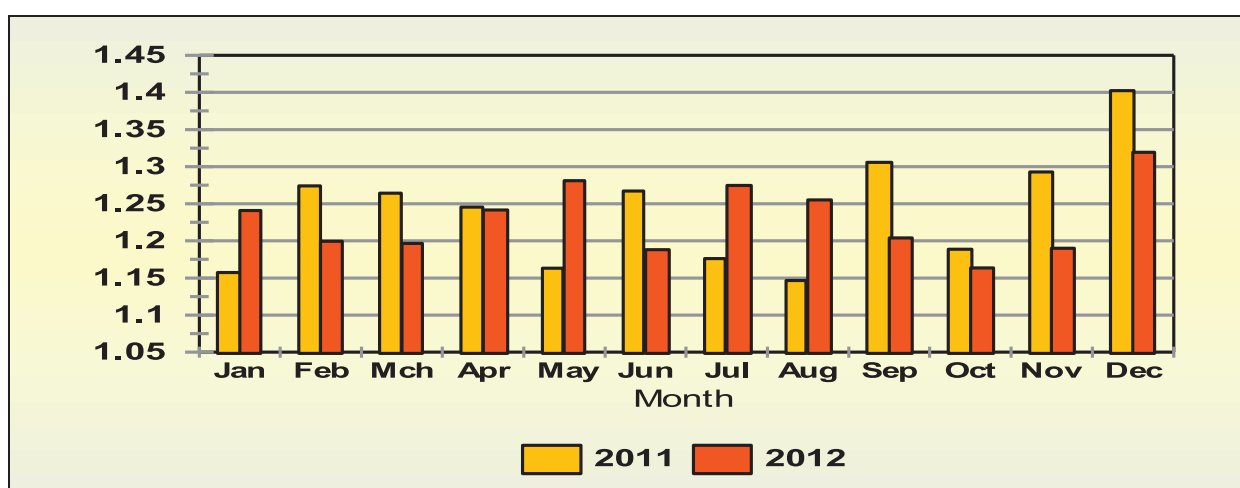


The severity rate per month is given in Table 28 and also reflected in the figure below.

Table 28: Monthly Crash Severity

Month	2011	2012	Change	% change
Jan	1.157	1.241	0.084	7.23
Feb	1.274	1.199	-0.074	-5.85
Mch	1.264	1.196	-0.068	-5.36
Apr	1.245	1.242	-0.004	-0.31
May	1.163	1.281	0.118	10.12
Jun	1.267	1.188	-0.079	-6.24
Jul	1.176	1.274	0.098	8.36
Aug	1.147	1.255	0.109	9.48
Sep	1.306	1.204	-0.102	-7.79
Oct	1.189	1.164	-0.025	-2.13
Nov	1.293	1.190	-0.103	-7.96
Dec	1.402	1.319	-0.083	-5.92
Total	1.242	1.232	-0.010	-0.78

Figure 32: Severity of Crashes per Month



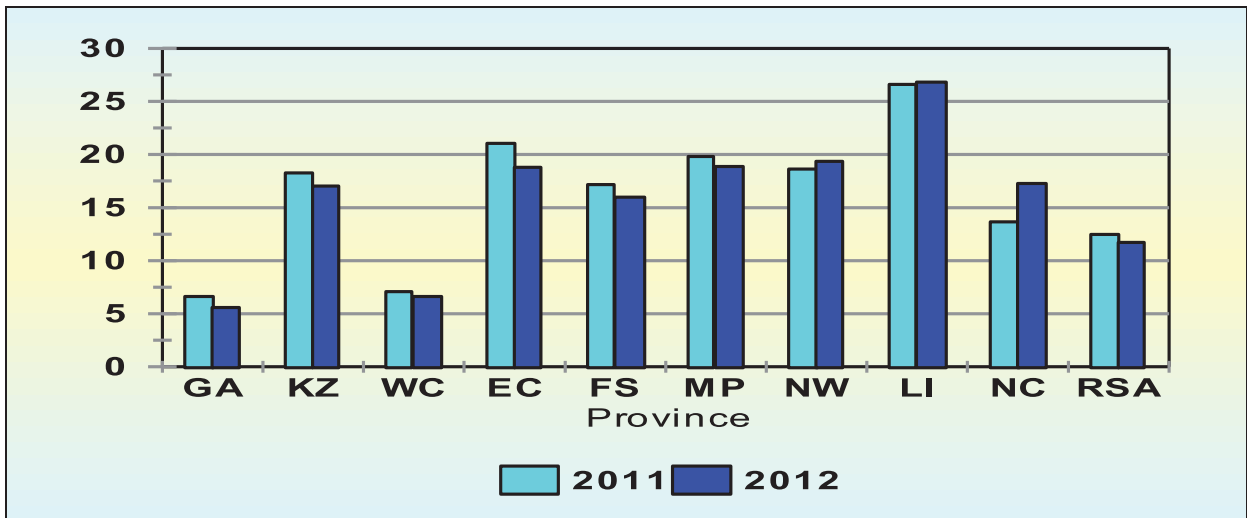
The figure above shows that the two months with exceptionally high severity rates were July and August 2012 with rates of 1274 and 1255 respectively. The biggest rate increase was recorded in July 2012 with an increase of 8.36%, and August with an increase of 9.48%. (These high rates could be attributed to a large number of high occupancy vehicles, buses and minibuses, involved in fatal crashes).

4.5 Crash and Fatality Rates and Trends per 10 000 Vehicles

The number of fatal crashes per 10 000 registered motorised vehicles decreased by 0.77 (6.15%) from 12, 48 during 2011 to 11, 71 during 2012. Provincial detail in this regard is given in Table 29 and graphically reflected in the figure below:

Year	GA	KZ	WC	EC	FS	MP	NW	LI	NC	RSA
2011	6.62	18.25	7.07	21.06	17.16	19.81	18.62	26.59	13.64	12.48
2012	5.58	17.01	6.62	18.80	15.98	18.87	19.35	26.83	17.26	11.71
change	-1.04	-1.24	-0.45	-2.26	-1.18	-0.93	0.73	0.23	3.62	-0.77
% change	-15.68	-6.78	-6.36	-10.73	-6.88	-4.71	3.91	0.87	26.54	-6.15

Figure 33: Number of Crashes per 10,000 Vehicles



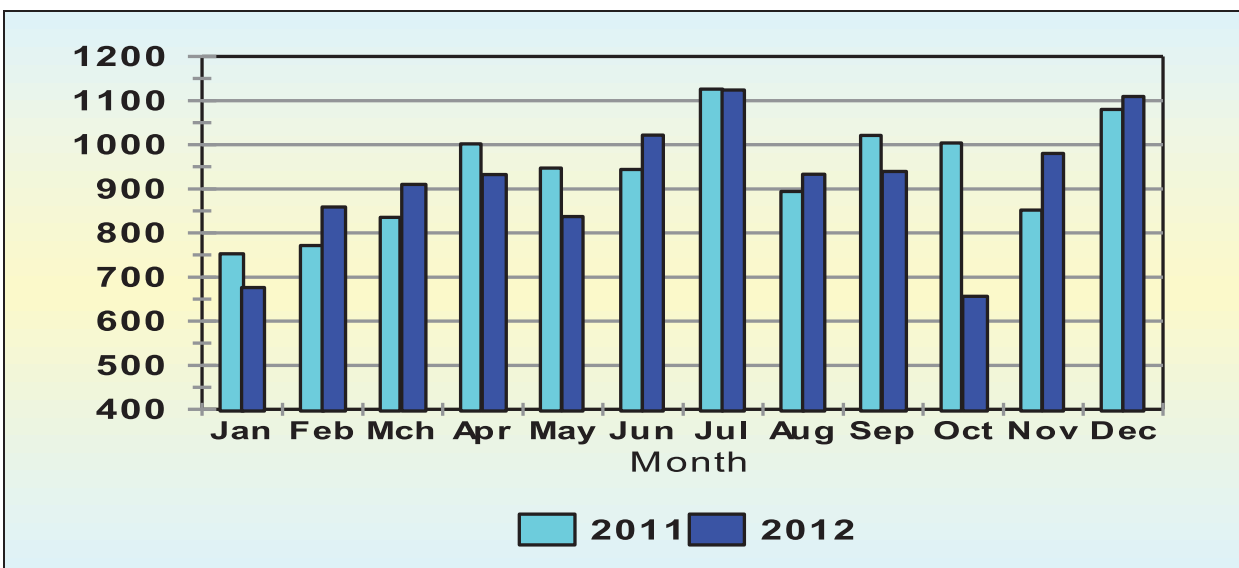
With the exception of Gauteng, KwaZulu-Natal, Western Cape, Eastern Cape Free State and Mpumalanga, all other provinces recorded an increase in this regard.

On a provincial percentage basis the biggest increases were recorded as follows:

- Northern Cape : increase of 3.62 (26.54%) from 13,64 to 17,26;
- North West : increase of 0.73 (3.91%) from 18,62 to a rate of 19,35 and
- Limpopo: increase of 0.23 (0.87%) from 26, 59 to 26, 83.

The number of fatal crashes per 10 000 registered motorised vehicles per month for the two respective years 2010/11 and 2011/12 are shown in the figure below:

Figure 34: Number of Crashes per 10,000 Vehicles

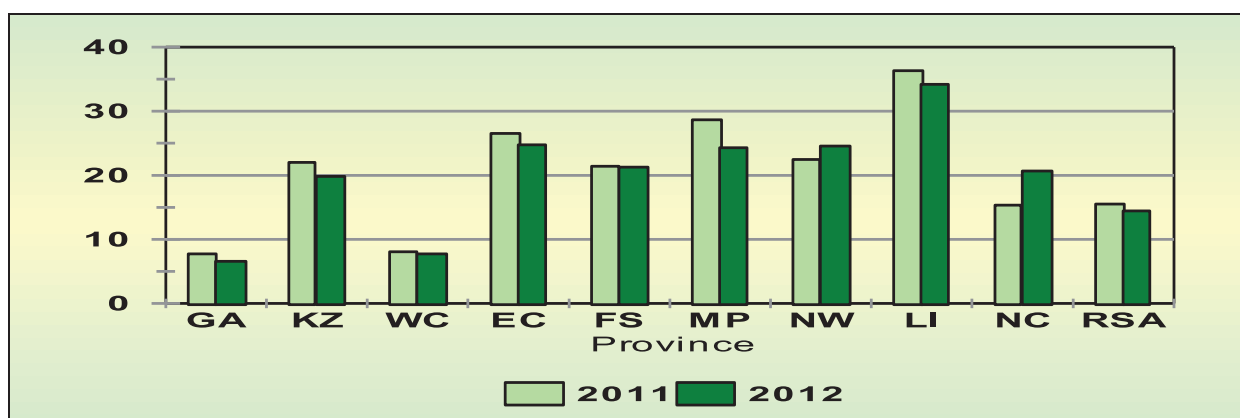


The number of fatalities per 10 000 registered motorised vehicles decreased by 1,07 (6.88%) from 15, 50 during 2011 to 14, 43 during 2012. Provincial detail in this regard is given in Table 30 and graphically reflected in the figure below:

Table 30: Number of Fatalities per 10,000 Motorised Vehicles

Year	GA	KZ	WC	EC	FS	MP	NW	LI	NC	RSA
2011	7.75	22.02	8.07	26.53	21.41	28.67	22.46	36.34	15.34	15.50
2012	6.59	19.82	7.74	24.74	21.27	24.29	24.58	34.21	20.67	14.43
change	-1.16	-2.19	-0.33	-1.79	-0.14	-4.38	2.11	-2.13	5.33	-1.07
% change	-14.99	-9.97	-4.12	-6.76	-0.66	-15.28	9.42	-5.85	34.75	-6.88

Figure 35: No. of Fatalities per 10,000 Vehicles

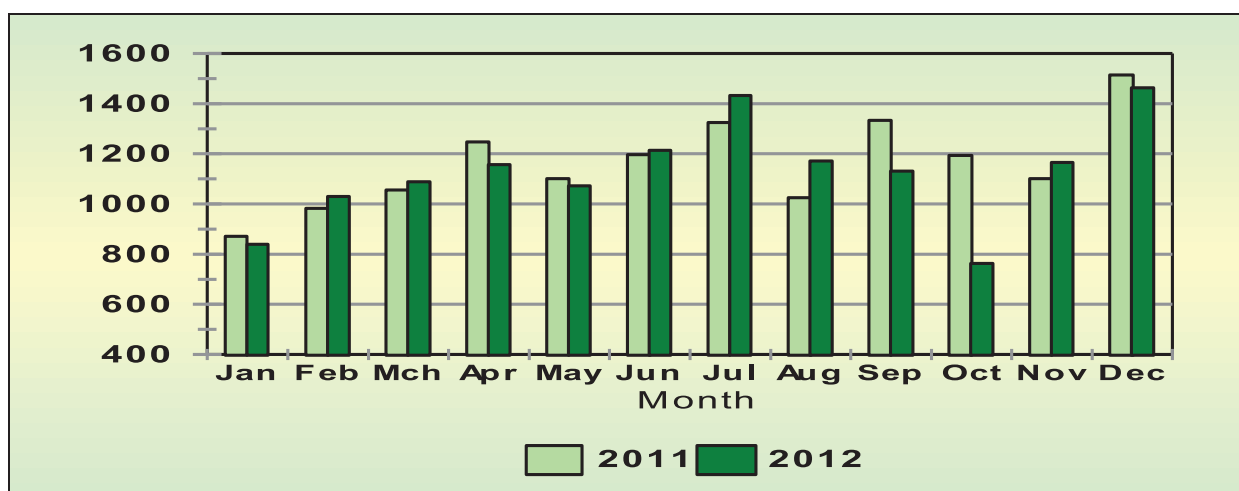


With the exception of Gauteng, KwaZulu-Natal, Mpumalanga, Free State, Western Cape and Limpopo, all other provinces recorded increases in the number of fatalities per 10000 vehicles. On a provincial percentage basis the biggest increases were recorded as follows:

- Northern Cape: increase of 5,33 (34.75%) from 15,34 to a rate of 20,67;
- North West: increase of 2,11 (9.42%) from 22,46 to a rate of 24,58; and

The number of fatalities per 10 000 registered motorised vehicles per month for the two 12-month periods is shown in the figure below:

Figure 36: Number of Fatalities per Month



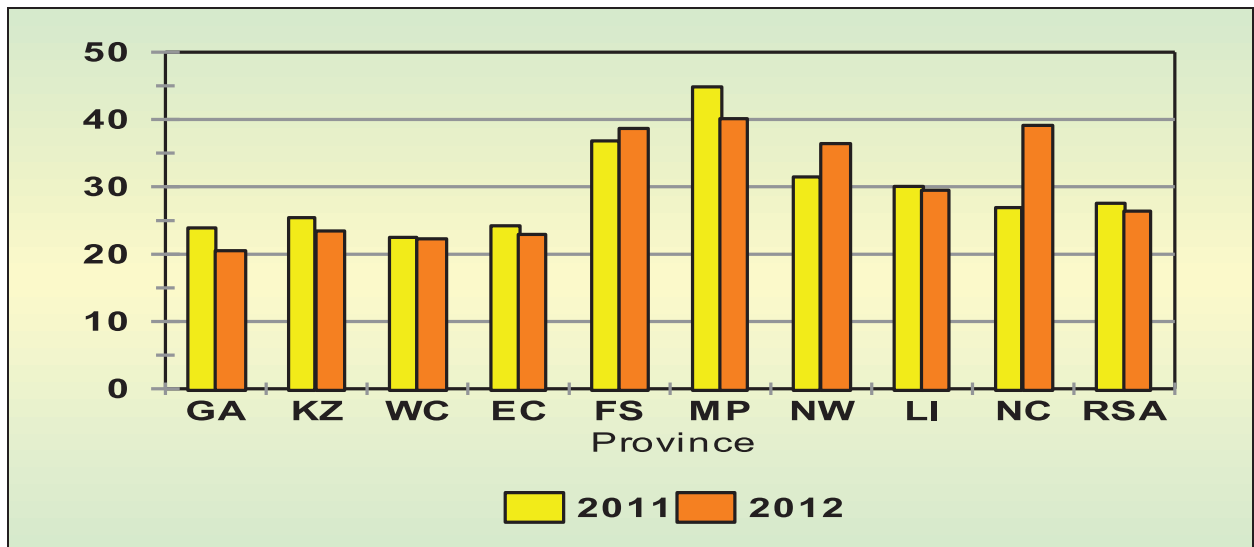
4.6 Number of Fatalities per 100 000 Human Population

The number of fatalities per 100 000 human population decreased by 1, 18 (4.27%) from 27, 56 during 2011 to 26, 39 during 2012. Provincial detail in this regard is given in Table 31 and graphically reflected in the figure below:

Table 31: Number of Fatalities per 100,000 Human Population

Year	GA	KZ	WC	EC	FS	MP	NW	LI	NC	RSA
2011	23.91	25.43	22.47	24.20	36.81	44.83	31.48	30.07	26.91	27.56
2012	20.49	23.43	22.30	22.93	38.67	40.14	36.44	29.50	39.14	26.39
change	-3.42	-2.00	-0.18	-1.27	1.86	-4.69	4.96	-0.57	12.23	-1.18
% change	-14.29	-7.85	-0.79	-5.26	5.05	-10.45	15.75	-1.88	45.43	-4.27

Figure 37: Fatalities per 100,000 Human Population Per province



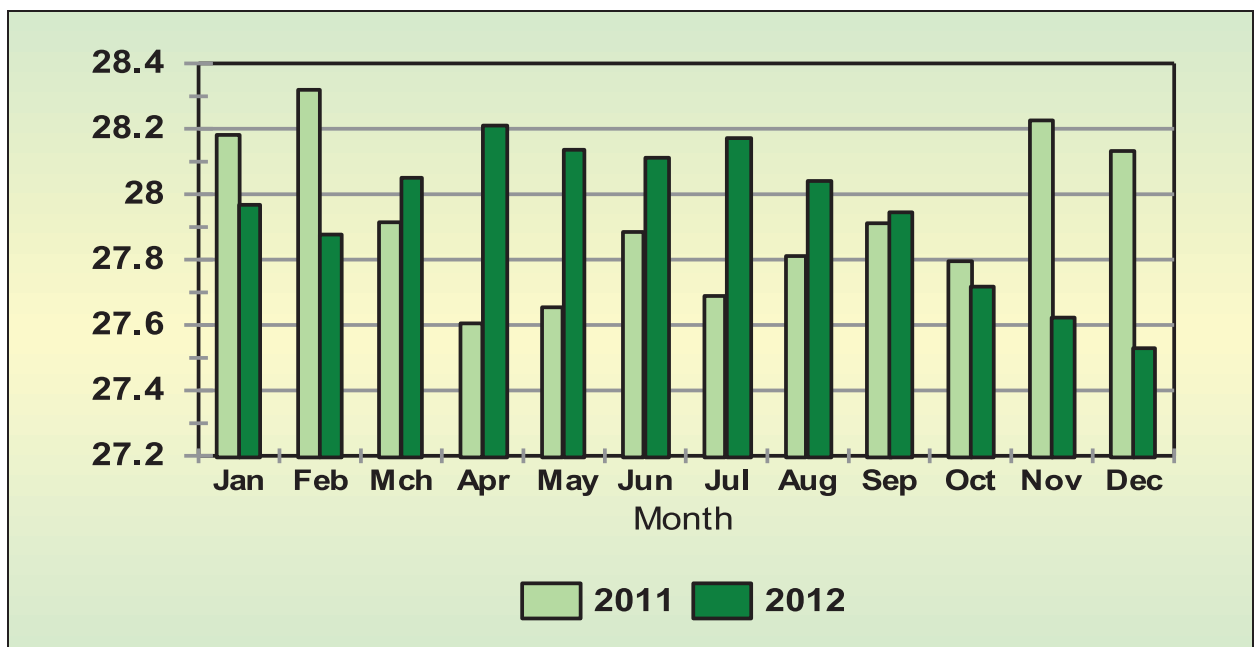
With the exception of Western Cape, Eastern Cape, Free State, North West and Northern Cape, all other provinces recorded decreases in this regard. On a provincial percentage basis the biggest increases were recorded as follows:

Northern Cape: an increase of 12,23 (45.43%) from 26,91 to a rate of 39,14;

North West: an increase of 12,23(15.75%) from 31,48 to 36,44 and,

Free State: an increase of 1, 86 (5.05%) from 36, 81 to a rate of 38, 67.

Figure 38: Monthly Fatalities per 100,000 Human Population



5. Fatalities Per Day-of-Week & Time -of-Day

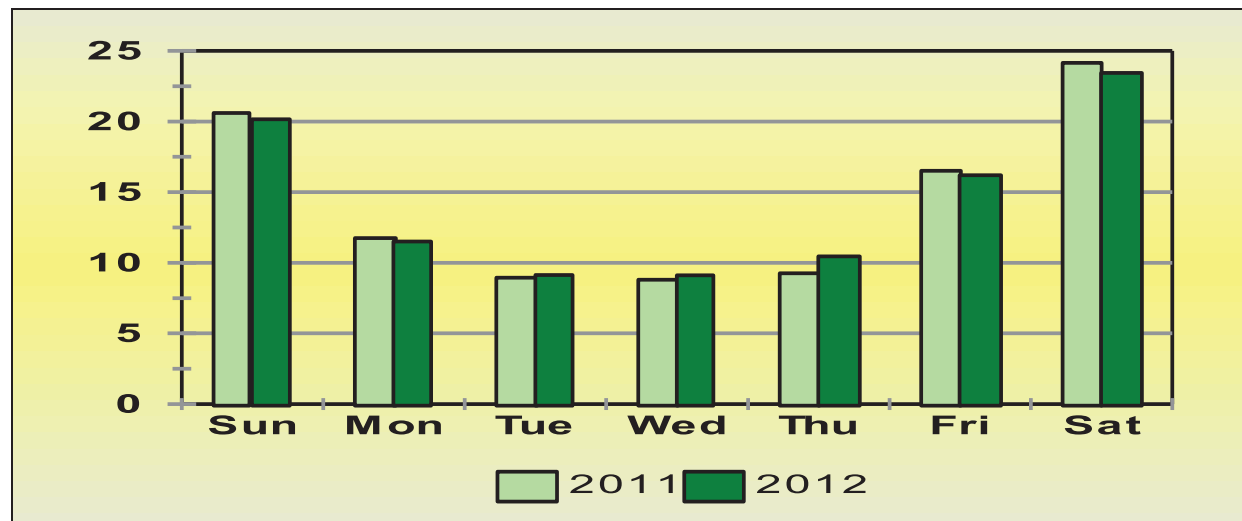
5.1 Crashes per Day of Week

The percentage of fatal crashes per day of the week per province during 2012 is given in Table 32 and graphically reflected in figure 39.

Table 32: Percentage of Fatal Crashes per Day-of-Week

Province	Sun	Mon	Tue	Wed	Thu	Fri	Sat
Gauteng	22.37	10.65	9.74	9.44	10.65	15.83	21.31
KwaZulu-Natal	17.27	12.87	11.46	9.99	10.81	16.45	21.15
Western Cape	20.80	14.08	7.80	7.80	11.05	15.06	23.40
Eastern Cape	20.80	10.80	10.00	8.80	8.80	14.40	26.40
Free State	20.70	12.11	8.20	10.55	8.98	17.58	21.88
Mpumalanga	22.47	12.88	8.94	9.07	9.59	15.64	21.42
North West	22.99	9.00	7.62	8.03	9.83	16.20	26.32
Limpopo	20.00	9.03	7.49	7.90	11.79	17.23	26.56
Northern Cape	15.83	8.63	7.55	13.67	9.35	19.42	25.54
Total	20.17	11.50	9.14	9.11	10.45	16.21	23.43

Figure 39: Fatal Crashes per Day of Week

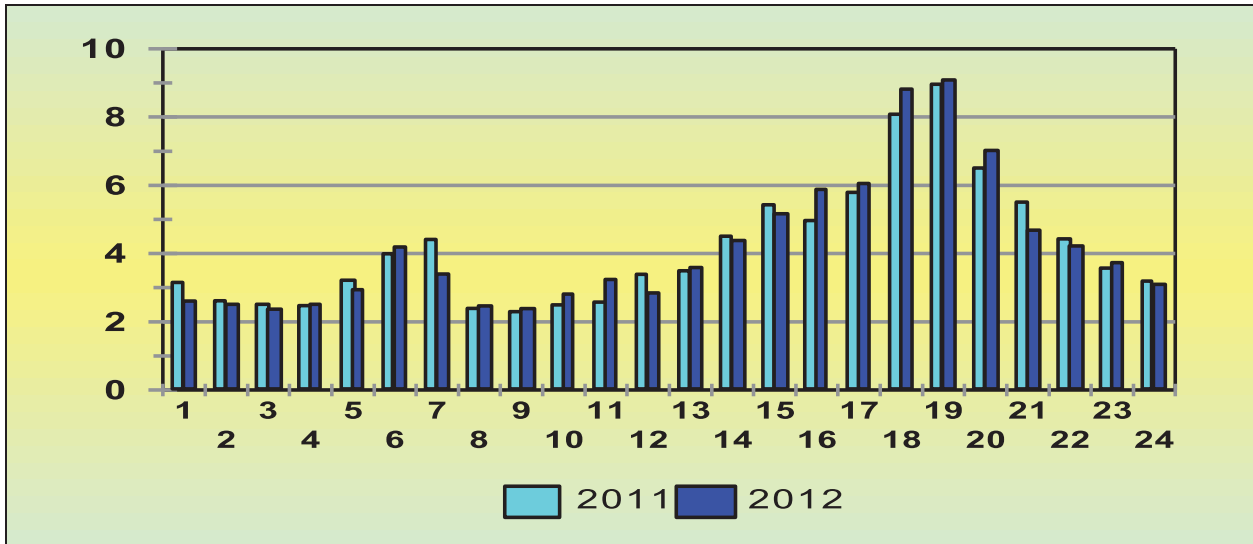


The information above shows that almost one quarter (23, 40%) of the weekly crashes happen on a Saturday, and 76.61% of all fatal crashes happened over weekends from Friday to Sunday. The graph above reflects the comparison of day-of-week crashes between 2011 and 2012.

5.1 Number of Crashes per Time of Day

The percentage of fatal crashes per time of day during 2011 and 2012 is reflected in the graph 40 below:

Figure 40: Fatal Crashes per Day of Week



The above information shows the following percentage of crashes for the respective hours of the day during 2012:

- From 06:00 to 12:00 : 21.33%;
- From 12:00 to 18:00 : 33.88%;
- From 18:00 to 24:00 : 31.85%;
- From 00:00 to 06:00: 12.93%.

During 2012 12.93% of fatal crashes happened during the early hours of the morning, between midnight and 06:00 in the morning.

About 31.85% of the daily crashes happened between 18:00 in the evening and midnight (00:00). About 44.78% of the daily crashes happened generally during hours of darkness, between 18:00 in the evening and 06:00 the next morning.

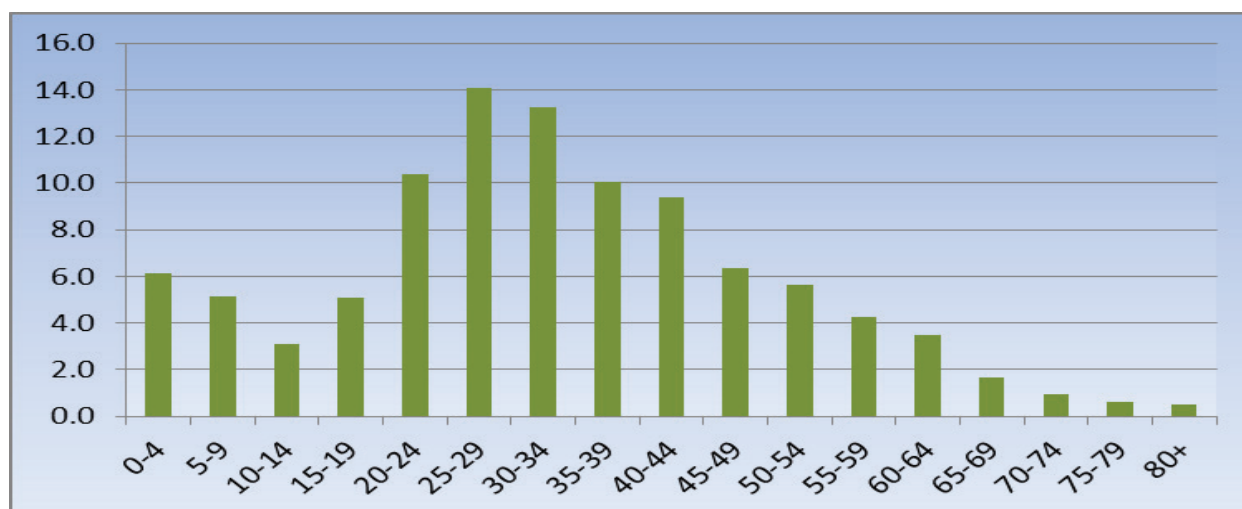
5.2 Road User Fatalities Per Age Group

The percentage of fatalities per age group and road for the year 2012 (only for the cases where this information is available) are given in Table 33 and reflected in figure 41.

Table 33: Percentage Road User Fatalities per Age Groups

Age group	Driver	Passenger	Pedestrian	Cyclist	Unknown	Total
0-4	0	5.4	8.6	0	6.1	6.1
5-9	0	4.2	10.4	0	0.0	5.1
10-14	0	3.8	5.2	0	1.1	3.1
15-19	1.1	6.7	6.7	8	4.6	5.1
20-24	7.6	13.6	10.4	8	0.0	10.4
25-29	16.5	15.6	11.9	7	1.1	14.1
30-34	15.3	14.8	10.6	17	4.6	13.2
35-39	13.2	9.8	8.1	13	2.3	10.1
40-44	13.3	8.0	7.7	12	3.4	9.4
45-49	9.3	5.3	5.0	7	1.1	6.3
50-54	9.0	3.9	4.8	3	3.4	5.6
55-59	7.0	3.2	2.9	7	1.1	4.2
60-64	3.6	3.0	3.6	9	1.1	3.5
65-69	2.2	0.9	1.8	4	0.0	1.6
70-74	1.1	0.8	0.9	3	0.0	1.0
75-79	0.7	0.4	0.8	1	0.0	0.6
80+	0.2	0.5	0.7	1	0.0	0.5
Total	100.0	100.0	100.0	100	100.0	100.0

Figure 41: Percentage Road User Fatalities per Age Groups



The above information shows that the highest fatalities in term of age group ranges between 20 and 44, 25-29 having the most fatalities with 14.1% contribution to all fatalities.

6. Major crashes Investigated

6.1. Number of major crashes

The information below shows that there were one hundred and eighteen (118) major crashes that were investigated by the Corporation. The major crashes referred to are the ones that meet the following criteria:

- Accidents in which five (5) or more persons are killed;
- Fatal accidents in which four (4) or more vehicles are involved;
- Fatal accidents in which vehicles carrying hazardous substances are involved; or
- Any high profile accident that the Corporation feels necessary to investigate.

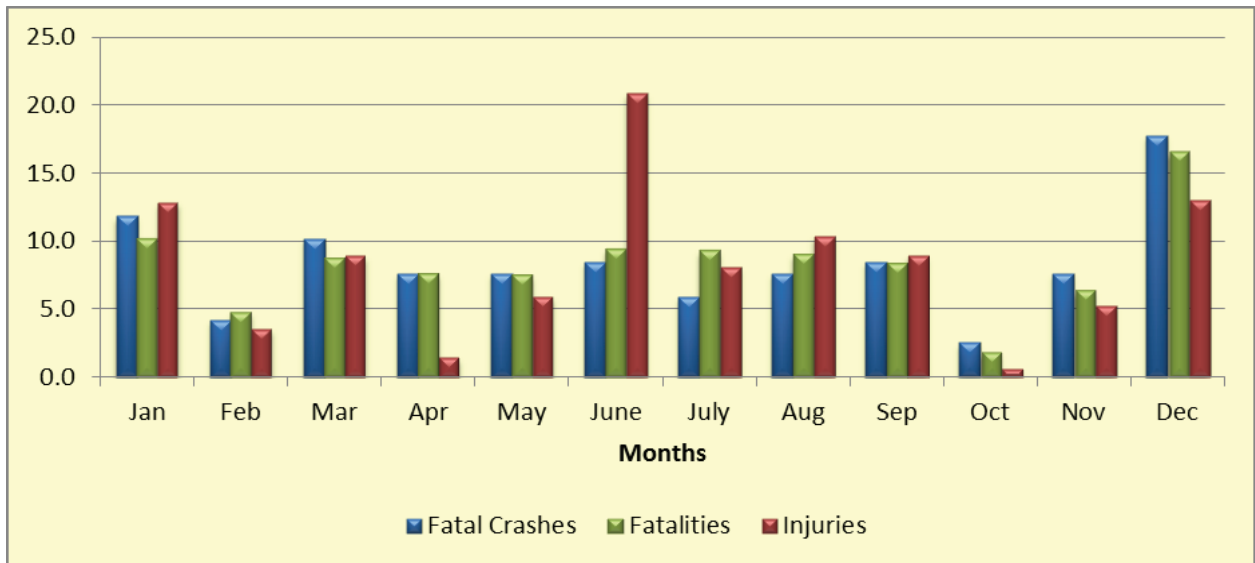
December 2012 had the most crashes accounting to 21 followed by January with 14, March with 12, June and September with 10.

Table 34: Number and Percentage Contribution of Major Crashes, Fatalities and Injuries per month: 2012

Month	Jan	Feb	Mar	Apr	May	June	July	Aug	Sep	Oct	Nov	Dec	Total
Number of Crashes	14	5	12	9	9	10	7	9	10	3	9	21	118
% Contribution per Month	11.9	4.2	10.2	7.6	7.6	8.5	5.9	7.6	8.5	2.5	7.6	17.8	100
Number of Fatalities	72	34	62	54	53	67	66	64	59	13	45	117	706
% Contribution per Month	10.2	4.8	8.8	7.6	7.5	9.5	9.3	9.1	8.4	1.8	6.4	16.6	100
Number Of Injuries	108	30	75	12	50	175	68	87	75	5	44	109	838
% Contribution per Month	12.9	3.6	8.9	1.4	6.0	20.9	8.1	10.4	8.9	0.6	5.3	13.0	100



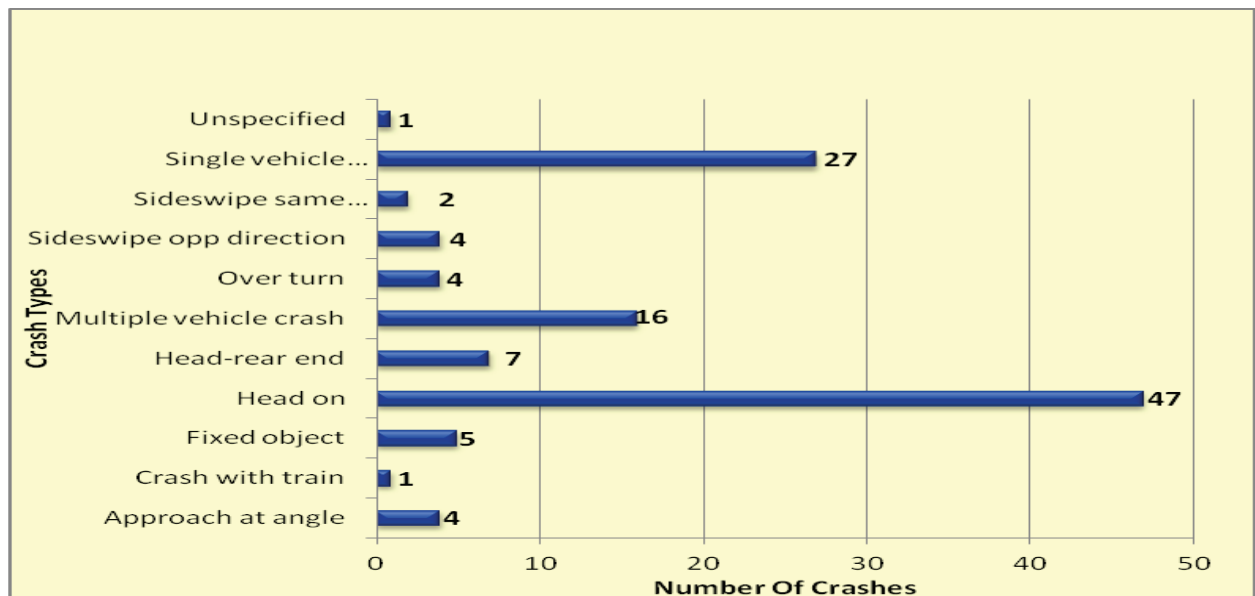
Figure 42: % Contribution for Major Crashes, Fatalities and Injuries



6.2 Crash Types

The information below shows that most major crashes occurred as a result of head on collision and single vehicle overturned.

Figure 43: Number of Fatal Crashes per Crash Type

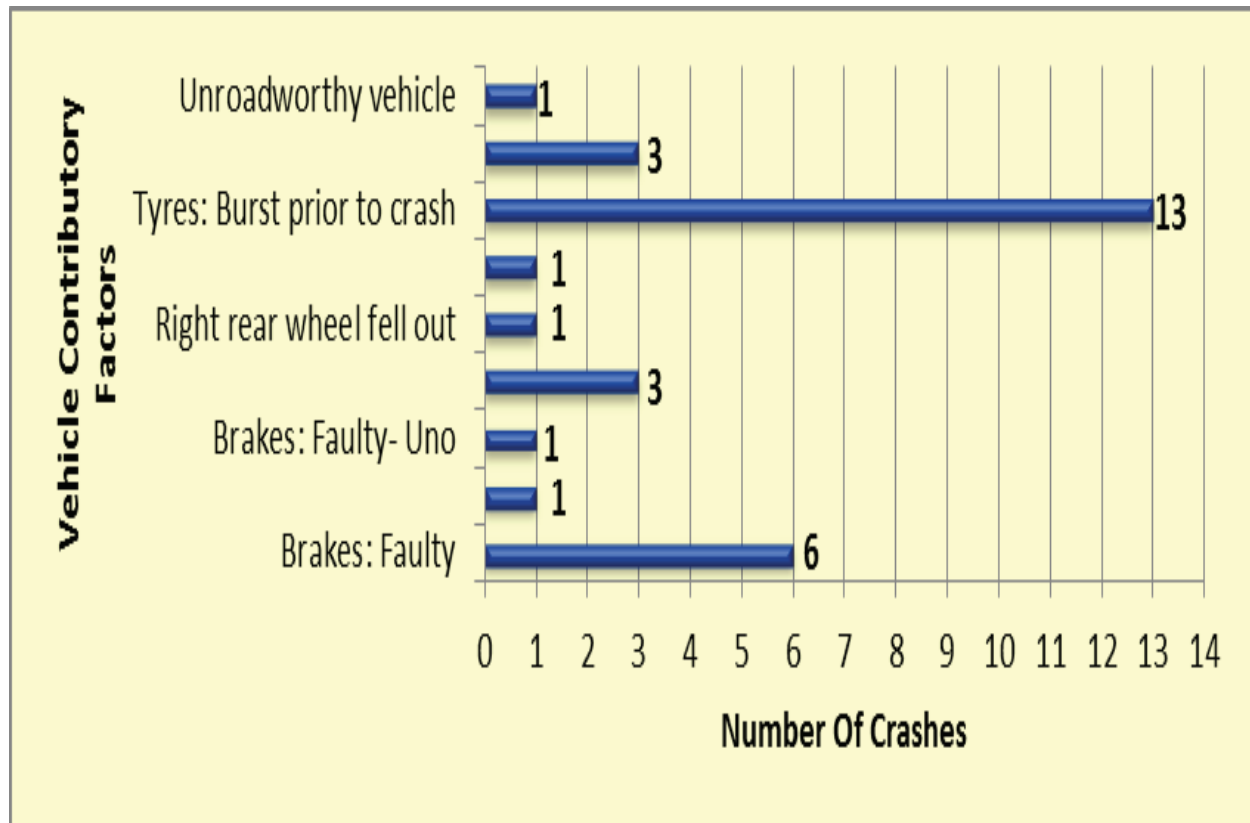


6.3 Contributory Factors

6.3.1 Vehicle Factor

The figure below shows that the major crashes is tyre burst, followed by faulty brakes.

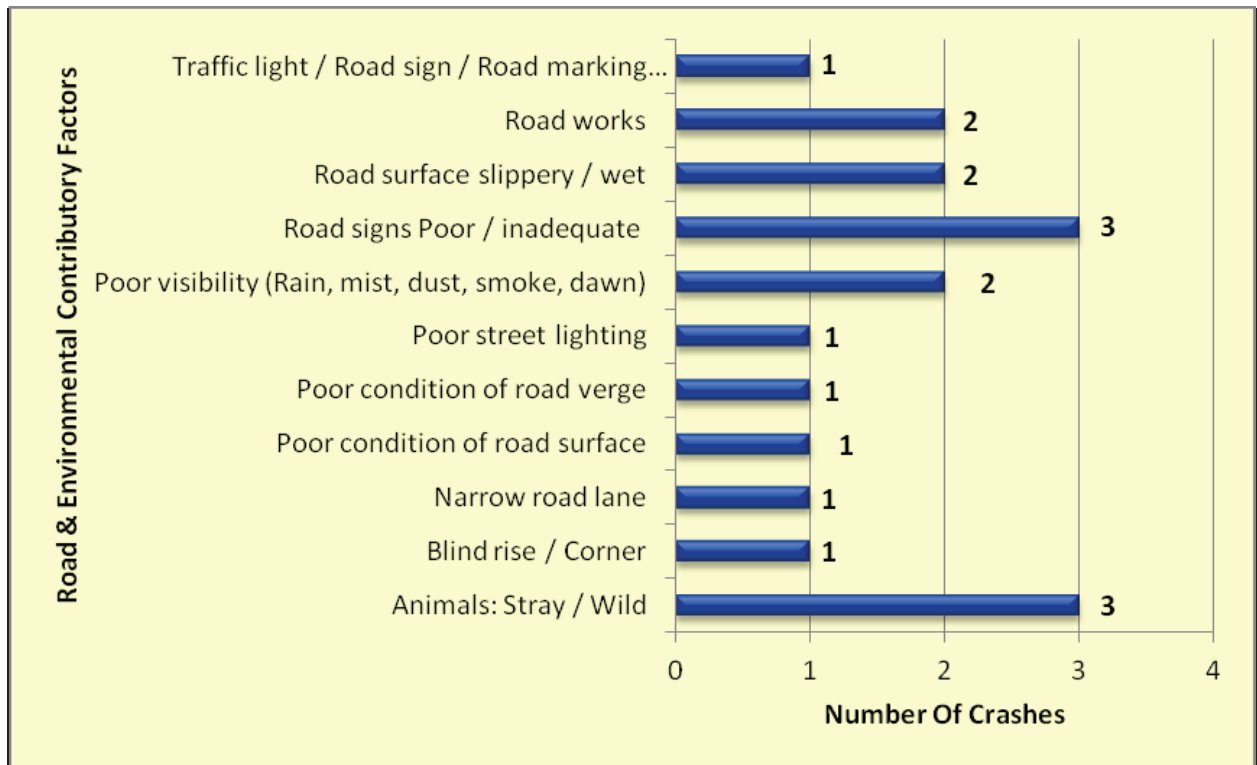
Figure 44: Vehicle Contributory Factors



6.3.2 Road and Environmental Factor

The following factors seem to be the most leading ones: poor road signs, poor visibility and stray animals.

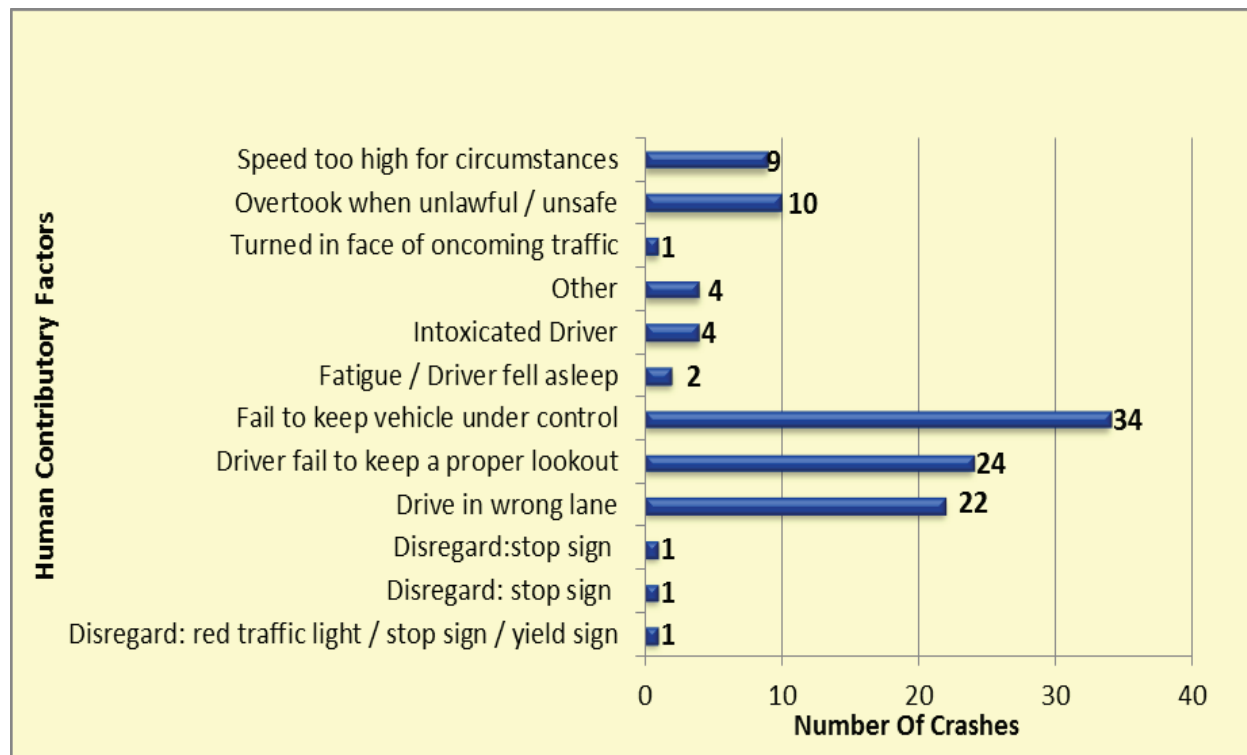
Figure 45: Road and Environmental Contributory Factors



6.3.3 Human Factor

The figure below shows in most cases the drivers of the vehicle are found to fail to keep the vehicle under control, followed by Driver fail to keep a proper lookout and driving on the wrong side of the road.

Figure 46: Human Contributory factors



Annexures

A	Number of registered vehicles per province	ii
B-1	Number of Unroadworthy vehicles	iii
B-2	Number of Unlicenced vehicles	iv
B-3	Number of Unroadworthy and Unlicenced vehicles	v
C-1	Number of learners licences issued	vi
C-2	Number of driving licences issued	vii
C-3	Number of PrDPs issued	viii
D	Monthly number of fatal crashes per province	ix
E	Monthly number of fatalities per province	x
F	Number of fatalities per Road User Group	xi

Annexure A

Number of Registered Vehicles

Dec 2011	Number of Registered Vehicles per Province									Total RSA
	GA	KZ	WC	EC	FS	MP	NW	LI	NC	
Motorised Vehicles										
Motorcars	2,454,845	803,715	1,024,987	372,898	270,198	318,766	252,859	233,869	99,941	5,832,078
Minibuses	110,763	46,320	33,887	20,688	11,932	20,732	16,617	19,279	3,966	284,184
Buses	16,779	6,753	5,329	3,700	2,266	5,320	3,260	4,533	1,313	49,253
Motorcycles	136,109	32,346	75,869	23,296	20,327	19,313	15,016	9,672	7,965	339,913
LDV's - Bakkies	677,470	298,431	277,560	171,219	116,368	167,972	128,562	171,766	65,015	2,074,363
Trucks	127,840	50,678	35,450	23,196	19,941	28,713	17,313	20,911	9,203	333,245
Other & Unknown	39,622	32,398	34,222	14,828	39,598	26,973	26,203	15,559	8,368	237,769
Sub-Total	3,563,428	1,270,641	1,487,304	629,825	480,630	587,789	459,830	475,589	195,771	9,150,805
Towed Veh's										
Caravans	41,091	8,354	16,564	5,616	7,967	10,034	6,904	5,295	3,000	104,825
Heavy Trailers	53,554	26,504	13,874	9,054	14,628	17,385	10,414	6,706	5,021	157,140
Light Trailers	299,256	74,565	120,696	49,030	58,284	55,112	47,710	34,497	24,311	763,461
Unknown	2,750	1,657	2,286	1,296	2,085	2,161	2,544	1,366	676	16,819
Sub-Total	396,651	111,080	153,420	64,996	82,964	84,692	67,572	47,864	33,008	1,042,245
All Vehicles	3,960,078	1,381,721	1,640,723	694,821	563,594	672,481	527,402	523,452	228,778	10,193,050

Dec 2012	Province									Total RSA
	GA	KZ	WC	EC	FS	MP	NW	LI	NC	
Motorised Veh's										
Motorcars	2,562,553	843,722	1,065,914	388,647	280,314	342,114	266,015	253,930	107,347	6,110,556
Minibuses	111,641	46,937	33,169	20,815	11,919	21,000	16,707	19,459	4,208	285,855
Buses	17,206	7,008	5,658	3,520	2,458	6,125	3,401	4,931	1,379	51,686
Motorcycles	142,916	34,354	79,563	23,618	21,010	20,255	15,341	10,265	8,294	355,616
LDV's - Bakkies	702,603	310,039	282,974	175,974	119,378	177,616	132,696	182,355	69,078	2,152,713
Trucks	130,301	50,937	36,934	22,609	20,116	32,520	17,449	21,889	9,367	342,122
Other & Unknown	39,072	33,000	35,285	15,176	39,715	27,694	26,366	16,068	8,693	241,067
Sub-Total	3,706,292	1,325,997	1,539,497	650,359	494,910	627,324	477,975	508,897	208,366	9,539,615
Towed Veh's										
Caravans	41,060	8,184	16,638	5,541	7,945	10,159	6,825	5,443	3,050	104,845
Heavy Trailers	55,301	26,569	15,598	8,150	15,158	21,240	10,627	7,107	5,158	164,908
Light Trailers	306,941	76,590	124,155	50,202	59,363	57,329	48,698	36,001	25,205	784,484
Unknown	2,750	1,657	2,286	1,296	2,085	2,161	2,544	1,366	676	16,819
Sub-Total	406,052	113,000	158,677	65,189	84,551	90,889	68,694	49,917	34,089	1,071,056
All Vehicles	4,112,343	1,438,997	1,698,173	715,548	579,461	718,213	546,669	558,813	242,454	10,610,671

% Change Dec 2011-2012	Number of Registered Vehicles per Province									Total RSA
	GA	KZ	WC	EC	FS	MP	NW	LI	NC	
Motorised Vehicles										
Motorcars	4.39	4.98	3.99	4.22	3.74	7.32	5.20	8.58	7.41	4.77
Minibuses	0.79	1.33	-2.12	0.61	-0.11	1.29	0.54	0.93	6.10	0.59
Buses	2.54	3.78	6.17	-4.86	8.47	15.13	4.33	8.78	5.03	4.94
Motorcycles	5.00	6.21	4.87	1.38	3.36	4.88	2.16	6.13	4.13	4.62
LDV's - Bakkies	3.71	3.89	1.95	2.78	2.59	5.74	3.22	6.16	6.25	3.78
Trucks	1.93	0.51	4.19	-2.53	0.88	13.26	0.79	4.68	1.78	2.66
Other & Unknown	-1.39	1.86	3.11	2.35	0.30	2.67	0.62	3.27	3.88	1.39
Sub-Total	4.01	4.36	3.51	3.26	2.97	6.73	3.95	7.00	6.43	4.25
Towed Vehicles										
Caravans	-0.08	-2.03	0.45	-1.34	-0.28	1.25	-1.14	2.80	1.67	0.02
Heavy Trailers	3.26	0.25	12.43	-9.98	3.62	22.17	2.05	5.98	2.73	4.94
Light Trailers	2.57	2.72	2.87	2.39	1.85	4.02	2.07	4.36	3.68	2.75
Unknown	0.00	0.00	0.00	0.00	0.00	0.00	0.00	0.00	0.00	0.00
Sub-Total	2.37	1.73	3.43	0.30	1.91	7.32	1.66	4.29	3.28	2.76
All Vehicles	3.85	4.15	3.50	2.98	2.82	6.80	3.65	6.76	5.98	4.10

Annexure B-1

Number of Unroadworthy Vehicles

Number of Unroadworthy Vehicles											
Dec 2011	GA	KZ	WC	EC	FS	MP	NW	LI	NC	RSA	
Motorised Vehicles											
Motorcars	96,583	28,517	26,554	10,766	11,747	12,712	9,447	7,807	2,047	206,180	
Minibuses	16,578	6,698	2,827	2,340	1,519	2,429	1,990	2,196	360	36,937	
Buses	1,952	756	467	481	238	584	273	435	169	5,355	
Motorcycles	16,543	3,349	4,157	1,380	2,034	2,997	1,921	1,341	561	34,283	
LDV's - Bakkies	26,245	11,464	6,792	4,676	3,855	5,522	3,546	4,444	1,203	67,747	
Trucks	15,624	6,770	3,190	3,035	3,563	4,436	2,575	2,990	1,556	43,739	
Other & Unknown	2,254	1,792	741	645	2,148	1,562	1,217	1,032	334	11,725	
Sub-Total	175,779	59,346	44,728	23,323	25,104	30,242	20,969	20,245	6,230	405,966	
Towed Vehicles											
Caravans	1,307	357	384	140	274	377	247	213	81	3,380	
Heavy Trailers	5,700	2,712	1,154	841	2,033	2,000	1,111	827	462	16,840	
Light Trailers	6,155	2,176	2,241	853	1,646	1,334	1,101	918	277	16,701	
Unknown	211	142	63	52	80	128	103	49	25	853	
Sub-Total	13,373	5,387	3,842	1,886	4,033	3,839	2,562	2,007	845	37,774	
All Vehicles	189,152	64,733	48,570	25,209	29,137	34,081	23,531	22,252	7,075	443,740	
Dec 2012	GA	KZ	WC	EC	FS	MP	NW	LI	NC	RSA	
Motorised Vehicles											
Motorcars	104,942	31,519	30,527	13,207	13,161	14,281	10,447	8,873	2,459	229,416	
Minibuses	16,918	6,672	2,775	2,402	1,552	2,551	2,035	2,173	395	37,473	
Buses	2,120	822	481	486	262	702	310	526	195	5,904	
Motorcycles	17,071	3,468	4,562	1,522	2,151	3,154	1,936	1,370	598	35,832	
LDV's - Bakkies	29,256	12,573	7,175	5,468	4,139	6,252	3,948	5,042	1,370	75,223	
Trucks	18,065	7,320	3,839	3,254	3,816	5,448	2,872	3,527	1,775	49,916	
Other & Unknown	2,341	1,872	917	741	2,377	1,901	1,382	1,203	359	13,093	
Sub-Total	190,713	64,246	50,276	27,080	27,458	34,289	22,930	22,714	7,151	446,857	
Towed Vehicles											
Caravans	1,340	361	406	165	303	449	276	227	98	3,625	
Heavy Trailers	6,460	2,984	1,504	833	2,292	2,705	1,261	947	623	19,609	
Light Trailers	6,582	2,414	2,379	1,024	1,804	1,589	1,181	1,032	368	18,373	
Unknown	185	161	69	53	102	136	111	69	26	912	
Sub-Total	14,567	5,920	4,358	2,075	4,501	4,879	2,829	2,275	1,115	42,519	
All Vehicles	205,280	70,166	54,634	29,155	31,959	39,168	25,759	24,989	8,266	489,376	

% Change	GA	KZ	WC	EC	FS	MP	NW	LI	NC	RSA
Motorised Vehicles										
Motorcars	8.65	10.53	14.96	22.67	12.04	12.34	10.59	13.65	20.13	11.27
Minibuses	2.05	-0.39	-1.84	2.65	2.17	5.02	2.26	-1.05	9.72	1.45
Buses	8.61	8.73	3.00	1.04	10.08	20.21	13.55	20.92	15.38	10.25
Motorcycles	3.19	3.55	9.74	10.29	5.75	5.24	0.78	2.16	6.60	4.52
LDV's - Bakkies	11.47	9.67	5.64	16.94	7.37	13.22	11.34	13.46	13.88	11.04
Trucks	15.62	8.12	20.34	7.22	7.10	22.81	11.53	17.96	14.07	14.12
Other & Unknown	3.86	4.46	23.75	14.88	10.66	21.70	13.56	16.57	7.49	11.67
Sub-Total	8.50	8.26	12.40	16.11	9.38	13.38	9.35	12.20	14.78	10.07
Towed Vehicles										
Caravans	2.52	1.12	5.73	17.86	10.58	19.10	11.74	6.57	20.99	7.25
Heavy Trailers	13.33	10.03	30.33	-0.95	12.74	35.25	13.50	14.51	34.85	16.44
Light Trailers	6.94	10.94	6.16	20.05	9.60	19.12	7.27	12.42	32.85	10.01
Unknown	-12.32	13.38	9.52	1.92	27.50	6.25	7.77	40.82	4.00	6.92
Sub-Total	8.93	9.89	13.43	10.02	11.60	27.09	10.42	13.35	31.95	12.56
All Vehicles	8.53	8.39	12.49	15.65	9.69	14.93	9.47	12.30	16.83	10.28

Annexure B-2

Number of Unlicensed Vehicles

Number of Unlicensed Vehicles										
Dec 2011	GA	KZ	WC	EC	FS	MP	NW	LI	NC	RSA
Motorised Vehicles										
Motorcars	77,600	22,166	22,346	12,981	9,859	10,654	9,393	8,747	2,949	176,695
Minibuses	5,724	1,821	985	1,010	470	666	794	704	155	12,329
Buses	343	145	69	204	36	91	73	93	23	1,077
Motorcycles	8,371	1,879	4,122	1,432	1,229	1,199	1,048	615	371	20,266
LDV's - Bakkies	18,151	8,662	5,440	6,133	3,350	4,731	4,032	5,240	1,478	57,217
Trucks	3,214	1,324	671	808	532	871	580	841	223	9,064
Other & Unknown	854	871	513	420	787	600	865	446	192	5,548
Sub-Total	114,257	36,868	34,146	22,988	16,263	18,812	16,785	16,686	5,391	282,196
Towed Vehicles										
Caravans	1,046	224	284	129	209	246	209	159	79	2,585
Heavy Trailers	924	441	156	204	208	320	244	121	57	2,675
Light Trailers	9,769	2,721	2,960	1,648	1,437	1,530	1,746	1,067	627	23,505
Unknown	140	80	101	82	103	93	187	57	20	863
Sub-Total	11,879	3,466	3,501	2,063	1,957	2,189	2,386	1,404	783	29,628
All Vehicles	126,136	40,334	37,647	25,051	18,220	21,001	19,171	18,090	6,174	311,824
Dec 2012	GA	KZ	WC	EC	FS	MP	NW	LI	NC	RSA
Motorised Vehicles										
Motorcars	88,469	24,007	24,658	14,273	10,555	12,314	9,939	10,272	3,418	197,905
Minibuses	6,100	2,024	925	1,039	428	706	739	749	163	12,873
Buses	426	182	84	157	50	116	92	112	34	1,253
Motorcycles	9,568	2,189	4,264	1,328	1,353	1,271	1,022	733	424	22,152
LDV's - Bakkies	20,280	9,526	5,688	6,635	3,370	5,212	4,400	6,014	1,688	62,813
Trucks	3,427	1,377	651	772	497	1,083	615	989	243	9,654
Other & Unknown	979	989	469	404	912	638	820	512	199	5,922
Sub-Total	129,249	40,294	36,739	24,608	17,165	21,340	17,627	19,381	6,169	312,572
Towed Vehicles										
Caravans	1,150	216	298	171	209	264	203	178	75	2,764
Heavy Trailers	1,022	506	174	134	237	398	226	173	87	2,957
Light Trailers	11,852	2,882	3,219	1,711	1,671	1,801	1,709	1,198	657	26,700
Unknown	148	136	80	53	105	106	129	59	19	835
Sub-Total	14,172	3,740	3,771	2,069	2,222	2,569	2,267	1,608	838	33,256
All Vehicles	143,421	44,034	40,510	26,677	19,387	23,909	19,894	20,989	7,007	345,828
% Change	GA	KZ	WC	EC	FS	MP	NW	LI	NC	RSA

Motorised Vehicles										
Motorcars	14.01	8.31	10.35	9.95	7.06	15.58	5.81	17.43	15.90	12.00
Minibuses	6.57	11.15	-6.09	2.87	-8.94	6.01	-6.93	6.39	5.16	4.41
Buses	24.20	25.52	21.74	-23.04	38.89	27.47	26.03	20.43	47.83	16.34
Motorcycles	14.30	16.50	3.44	-7.26	10.09	6.01	-2.48	19.19	14.29	9.31
LDV's - Bakkies	11.73	9.97	4.56	8.19	0.60	10.17	9.13	14.77	14.21	9.78
Trucks	6.63	4.00	-2.98	-4.46	-6.58	24.34	6.03	17.60	8.97	6.51
Other & Unknown	14.64	13.55	-8.58	-3.81	15.88	6.33	-5.20	14.80	3.65	6.74
Sub-Total	13.12	9.29	7.59	7.05	5.55	13.44	5.02	16.15	14.43	10.76
Towed Vehicles										
Caravans	9.94	-3.57	4.93	32.56	0.00	7.32	-2.87	11.95	-5.06	6.92
Heavy Trailers	10.61	14.74	11.54	-34.31	13.94	24.38	-7.38	42.98	52.63	10.54
Light Trailers	21.32	5.92	8.75	3.82	16.28	17.71	-2.12	12.28	4.78	13.59
Unknown	5.71	70.00	-20.79	-35.37	1.94	13.98	-31.02	3.51	-5.00	-3.24
Sub-Total	19.30	7.91	7.71	0.29	13.54	17.36	-4.99	14.53	7.02	12.25
All Vehicles	13.70	9.17	7.60	6.49	6.41	13.85	3.77	16.03	13.49	10.90

Annexure B-3

Number of Unroadworthy, Unlicensed or Both Vehicles

Number of Vehicles : Unroadworthy OR Unlicensed OR Both											
Dec 2011	GA	KZ	WC	EC	FS	MP	NW	LI	NC	RSA	
Motorised Vehicles											
Motorcars	183,117	54,297	51,801	25,494	23,467	25,262	20,125	18,037	5,307	406,907	
Minibuses	24,432	9,241	4,097	3,670	2,161	3,377	3,037	3,174	564	53,753	
Buses	2,408	947	560	737	287	701	368	559	201	6,768	
Motorcycles	26,397	5,555	8,677	2,966	3,475	4,463	3,149	2,068	968	57,718	
LDV's - Bakkies	46,457	21,519	12,970	11,562	7,664	11,092	8,020	10,439	2,847	132,570	
Trucks	19,731	8,545	4,046	4,053	4,319	5,635	3,325	4,103	1,878	55,635	
Other & Unknown	3,226	2,761	1,287	1,117	3,006	2,225	2,162	1,531	542	17,857	
Sub-Total	305,768	102,865	83,438	49,599	44,379	52,755	40,186	39,911	12,307	731,208	
Towed Vehicles											
Caravans	2,441	605	693	274	498	658	480	400	166	6,215	
Heavy Trailers	6,816	3,275	1,350	1,122	2,310	2,415	1,419	982	534	20,223	
Light Trailers	16,534	5,070	5,371	2,593	3,184	2,960	2,950	2,066	926	41,654	
Unknown	366	231	167	140	187	231	293	109	45	1,769	
Sub-Total	26,157	9,181	7,581	4,129	6,179	6,264	5,142	3,557	1,671	69,861	
All Vehicles	331,925	112,046	91,019	53,728	50,558	59,019	45,328	43,468	13,978	801,069	
Number of Vehicles : Unroadworthy OR Unlicensed OR Both											
Dec 2012	GA	KZ	WC	EC	FS	MP	NW	LI	NC	RSA	
Motorised Vehicles											
Motorcars	203,473	59,499	58,437	29,604	25,808	28,813	21,796	20,959	6,279	454,668	
Minibuses	25,156	9,498	3,950	3,750	2,147	3,534	3,018	3,219	599	54,871	
Buses	2,679	1,075	593	695	330	868	435	686	235	7,596	
Motorcycles	28,354	6,018	9,298	3,022	3,742	4,723	3,158	2,257	1,074	61,646	
LDV's - Bakkies	52,007	23,715	13,596	12,991	8,006	12,426	8,883	12,029	3,244	146,897	
Trucks	22,510	9,195	4,694	4,266	4,526	6,925	3,674	4,837	2,104	62,731	
Other & Unknown	3,470	2,968	1,423	1,177	3,393	2,640	2,286	1,779	584	19,720	
Sub-Total	337,649	111,968	91,991	55,505	47,952	59,929	43,250	45,766	14,119	808,129	
Towed Vehicles											
Caravans	2,588	600	727	343	529	737	502	419	180	6,625	
Heavy Trailers	7,751	3,668	1,706	1,010	2,592	3,222	1,530	1,161	728	23,368	
Light Trailers	19,098	5,478	5,778	2,822	3,564	3,516	2,985	2,321	1,056	46,618	
Unknown	348	304	155	112	216	251	251	131	46	1,814	
Sub-Total	29,785	10,050	8,366	4,287	6,901	7,726	5,268	4,032	2,010	78,425	

All Vehicles	367,434	122,018	100,357	59,792	54,853	67,655	48,518	49,798	16,129	886,554
Number of Vehicles : Unroadworthy OR Unlicensed OR Both										
% Change	GA	KZ	WC	EC	FS	MP	NW	LI	NC	RSA
Motorised Vehicles										
Motorcars	11.12	9.58	12.81	16.12	9.98	14.06	8.30	16.20	18.32	11.74
Minibuses	2.96	2.78	-3.59	2.18	-0.65	4.65	-0.63	1.42	6.21	2.08
Buses	11.25	13.52	5.89	-5.70	14.98	23.82	18.21	22.72	16.92	12.23
Motorcycles	7.41	8.33	7.16	1.89	7.68	5.83	0.29	9.14	10.95	6.81
LDV's - Bakkies	11.95	10.20	4.83	12.36	4.46	12.03	10.76	15.23	13.94	10.81
Trucks	14.08	7.61	16.02	5.26	4.79	22.89	10.50	17.89	12.03	12.75
Other & Unknown	7.56	7.50	10.57	5.37	12.87	18.65	5.74	16.20	7.75	10.43
Sub-Total	10.43	8.85	10.25	11.91	8.05	13.60	7.62	14.67	14.72	10.52
Towed Vehicles										
Caravans	6.02	-0.83	4.91	25.18	6.22	12.01	4.58	4.75	8.43	6.60
Heavy Trailers	13.72	12.00	26.37	-9.98	12.21	33.42	7.82	18.23	36.33	15.55
Light Trailers	15.51	8.05	7.58	8.83	11.93	18.78	1.19	12.34	14.04	11.92
Unknown	-4.92	31.60	-7.19	-20.00	15.51	8.66	-14.33	20.18	2.22	2.54
Sub-Total	13.87	9.47	10.35	3.83	11.68	23.34	2.45	13.35	20.29	12.26
All Vehicles	10.70	8.90	10.26	11.29	8.50	14.63	7.04	14.56	15.39	10.67

Annexure C-1

Number of Learner Licences Issued

Dec 2011	Number of Learners Licences Issued per Province									
Category	GA	KZ	WC	EC	FS	MP	NW	LI	NC	RSA
1	20,222	5,047	15,834	3,565	3,011	2,791	2,265	1,507	1,279	55,521
2	129,012	55,745	110,182	46,391	24,485	14,807	18,736	11,223	8,996	419,577
3	267,604	132,850	82,479	67,979	53,454	89,617	52,267	100,650	18,845	865,745
Total	416,838	193,642	208,495	117,935	80,950	107,215	73,268	113,380	29,120	1,340,843
Dec 2012	Number of Learners Licences Issued per Province									
Category	GA	KZ	WC	EC	FS	MP	NW	LI	NC	RSA
1	22,553	5,330	16,039	3,432	2,919	3,058	2,272	1,632	1,249	58,484
2	119,244	49,372	97,802	39,966	19,503	12,412	15,256	9,272	7,988	370,815
3	281,959	139,214	81,218	68,738	49,050	87,871	51,338	103,036	20,273	882,697
Total	423,756	193,916	195,059	112,136	71,472	103,341	68,866	113,940	29,510	1,311,996
% Change	Number of Learners Licences Issued per Province									
Category	GA	KZ	WC	EC	FS	MP	NW	LI	NC	RSA
1	11.53	5.61	1.29	-3.73	-3.06	9.57	0.31	8.29	-2.35	5.34
2	-7.57	-11.43	-11.24	-13.85	-20.35	-16.17	-18.57	-17.38	-11.20	-11.62
3	5.36	4.79	-1.53	1.12	-8.24	-1.95	-1.78	2.37	7.58	1.96
Total	1.66	0.14	-6.44	-4.92	-11.71	-3.61	-6.01	0.49	1.34	-2.15

Learner Licences:

Category 1: Motorcycle

Category 2: Light Motor Vehicle

Category 3: Heavy Motor Vehicle

Annexure C-2

Number of Driving Licences Issued

Dec 2011	Number of Driving Licences Issued per Province									
Category	GA	KZ	WC	EC	FS	MP	NW	LI	NC	RSA
A1	160,347	56,157	93,821	31,960	25,322	21,332	18,777	13,382	8,774	429,872
A	45,161	13,066	26,639	9,179	9,224	6,841	6,741	3,949	2,472	123,272
B	693,241	334,196	402,031	157,786	105,266	89,361	89,046	54,520	36,341	1,961,788
EB	3,390	4,668	2,955	862	426	1,230	1,572	1,367	352	16,822
C1	690,472	339,403	127,452	91,920	100,759	201,060	121,343	312,183	38,187	2,022,779
EC1	1,321,769	577,835	768,045	307,803	176,535	161,402	143,079	107,109	64,564	3,628,141
C	272,500	142,769	108,639	62,015	72,185	86,582	50,843	77,927	23,263	896,723
EC	234,788	70,614	51,575	45,397	35,947	52,322	37,827	63,350	11,235	603,055
Total	3,421,668	1,538,708	1,581,157	706,922	525,664	620,130	469,228	633,787	185,188	9,682,452
Dec 2012	Number of Driving Licences Issued per Province									
Category	GA	KZ	WC	EC	FS	MP	NW	LI	NC	RSA
A1	163,129	56,869	96,957	32,343	25,443	21,593	18,986	13,714	8,880	437,914
A	45,098	13,047	26,918	9,191	9,177	6,811	6,693	3,944	2,477	123,356
B	765,574	358,764	436,833	172,000	112,358	96,524	93,937	60,018	39,122	2,135,130
EB	3,703	4,775	3,226	890	445	1,548	1,608	1,438	368	18,001
C1	785,713	381,630	141,516	108,663	109,157	236,654	134,171	356,120	42,387	2,296,011
EC1	1,319,831	577,660	773,799	308,249	176,566	161,301	142,782	107,736	64,719	3,632,643
C	275,214	145,857	110,260	63,062	73,055	88,873	51,148	79,855	23,561	910,885
EC	232,767	70,517	51,379	45,556	35,828	52,294	37,651	63,920	11,313	601,225
Total	3,591,029	1,609,119	1,640,888	739,954	542,029	665,598	486,976	686,745	192,827	10,155,165
% Change	Number of Driving Licences Issued per Province									
Category	GA	KZ	WC	EC	FS	MP	NW	LI	NC	RSA
A1	1.73	1.27	3.34	1.20	0.48	1.22	1.11	2.48	1.21	1.87
A	-0.14	-0.15	1.05	0.13	-0.51	-0.44	-0.71	-0.13	0.20	0.07
B	10.43	7.35	8.66	9.01	6.74	8.02	5.49	10.08	7.65	8.84
EB	9.23	2.29	9.17	3.25	4.46	25.85	2.29	5.19	4.55	7.01
C1	13.79	12.44	11.03	18.21	8.33	17.70	10.57	14.07	11.00	13.51
EC1	-0.15	-0.03	0.75	0.14	0.02	-0.06	-0.21	0.59	0.24	0.12
C	1.00	2.16	1.49	1.69	1.21	2.65	0.60	2.47	1.28	1.58
EC	-0.86	-0.14	-0.38	0.35	-0.33	-0.05	-0.47	0.90	0.69	-0.30
Total	4.95	4.58	3.78	4.67	3.11	7.33	3.78	8.36	4.12	4.88

Driving licences:

A	Motorcycle > 125 cub.cm	A1	Motorcycle < 125 cub.cm	B	Motor vehicle < 3,5000 kg
C	Motor vehicle > 16,000 kg	C1	Motor vehicle 3,500 – 16,000 kg	EB	Articulated motor vehicle <16,000 kg
		EC	Articulated vehicle > 16,000 kg	EC1	Articulated vehicle 3,500 – 16,000 kg

Annexure C-3

Number of Professional Driving Permits (PrDPs) Issued

Dec 2011	Number of Professional Driving Permits (PrDPs) Issued per Province									
Category	GA	KZ	WC	EC	FS	MP	NW	LI	NC	RSA
G	2,032	2,266	2,165	848	1,018	1,317	498	1,113	413	11,670
P	148	52	212	62	72	91	23	40	30	730
P G	232,584	138,924	118,862	66,078	52,341	78,475	46,090	88,678	20,284	842,316
D G	36	16	10	2	13	14	19	10	1	121
D P G	8,263	6,580	2,560	1,241	2,023	1,958	905	1,088	453	25,071
Total	243,063	147,838	123,809	68,231	55,467	81,855	47,535	90,929	21,181	879,908
Dec 2012	Number of Professional Driving Permits (PrDPs) Issued per Province									
Category	GA	KZ	WC	EC	FS	MP	NW	LI	NC	RSA
G	2,156	2,279	2,102	783	1,079	1,454	549	1,106	366	11,874
P	2	1	9		1	8		2	1	24
P G	247,997	148,546	126,430	69,592	56,668	84,890	49,066	94,442	21,953	899,584
D G	43	23	8	6	27	11	24	10	1	153
D P G	9,209	7,213	2,957	1,376	2,277	2,198	961	1,196	484	27,871
Total	259,407	158,062	131,506	71,757	60,052	88,561	50,600	96,756	22,805	939,506
% Change	Number of Professional Driving Permits (PrDPs) Issued per Province									
Category	GA	KZ	WC	EC	FS	MP	NW	LI	NC	RSA
G	6.10	0.57	-2.91	-7.67	5.99	10.40	10.24	-0.63	-11.38	1.75
P	-98.65	-98.08	-95.75	-100.00	-98.61	-91.21	-100.00	-95.00	-96.67	-96.71
P G	6.63	6.93	6.37	5.32	8.27	8.17	6.46	6.50	8.23	6.80
D G	19.44	43.75	-20.00	200.00	107.69	-21.43	26.32	0.00	0.00	26.45
D P G	11.45	9.62	15.51	10.88	12.56	12.26	6.19	9.93	6.84	11.17
Total	6.72	6.92	6.22	5.17	8.27	8.19	6.45	6.41	7.67	6.77

Professional Driving Permits (PrDPs)

G: Goods

P: Passengers

D: Dangerous goods

Annexure D

Monthly Number of Fatal Crashes per Province: 2009 - 2012

Year	Number of Fatal Crashes per Province per Month										
	Month	GA	KZ	WC	EC	FS	MP	NW	LI	NC	RSA
2009	Jan	172	154	87	89	46	86	50	76	19	779
	Feb	136	135	65	64	56	68	51	70	16	661
	Mch	166	189	103	60	65	84	52	83	18	820
	Apr	208	208	83	96	49	105	87	103	17	956
	May	194	223	109	44	69	125	79	109	18	970
	Jun	155	194	107	82	49	123	74	102	17	903
	Jul	206	203	75	101	62	114	89	113	19	982
	Aug	169	212	74	107	63	121	82	104	24	956
	Sep	185	169	88	102	65	101	66	98	22	896
	Oct	181	156	86	84	71	112	82	94	26	892
	Nov	205	187	94	89	69	102	94	89	19	948
	Dec	219	184	105	137	79	116	78	132	44	1,094
2010	Jan	121	152	89	92	70	97	65	76	23	785
	Feb	171	164	82	41	52	81	65	80	18	754
	Mch	139	164	93	94	64	80	79	81	18	812
	Apr	95	205	94	117	59	94	54	95	21	834
	May	197	170	94	105	60	102	66	94	28	916
	Jun	125	209	75	116	74	105	66	94	23	887
	Jul	176	195	93	107	78	116	76	115	20	976
	Aug	166	217	71	114	60	105	88	98	23	942
	Sep	214	206	81	119	64	103	82	108	18	995
	Oct	207	184	78	119	79	106	73	102	28	976
	Nov	181	187	69	107	65	96	71	90	16	882
	Dec	167	196	110	141	98	103	84	127	52	1,078
2011	Jan	140	146	82	89	56	78	62	78	22	753
	Feb	162	148	91	96	46	93	55	67	13	771
	Mch	178	184	88	77	60	78	54	97	19	835
	Apr	210	214	88	105	71	106	71	114	23	1,002
	May	198	197	84	132	62	77	77	106	14	947
	Jun	193	217	89	89	66	100	68	102	20	944
	Jul	214	221	98	142	84	121	81	137	28	1,126
	Aug	197	183	81	102	60	76	89	89	17	894
	Sep	234	192	78	108	77	114	84	106	28	1,021
	Oct	213	196	76	125	69	105	68	127	25	1,004
	Nov	200	156	77	112	73	75	57	81	21	852
	Dec	182	227	107	135	90	109	78	120	32	1,080
2012	Jan	132	140	71	82	38	65	63	59	26	676
	Feb	167	189	76	101	46	83	70	99	28	859
	Mch	189	196	76	86	54	82	61	141	25	910
	Apr	163	184	96	96	70	92	74	132	25	932
	May	170	173	73	94	59	101	67	79	21	837
	Jun	194	202	88	109	70	115	87	119	38	1,022
	Jul	213	264	83	110	69	130	86	121	48	1,124
	Aug	198	180	71	97	64	91	84	124	24	933
	Sep	186	174	75	97	78	107	82	109	31	939
	Oct	34	139	80	81	67	84	76	67	28	656
	Nov	187	160	97	122	78	94	80	140	22	980
	Dec	204	213	118	131	89	105	80	134	35	1,109

Annexure E

Monthly Number of Fatalities per Province: 2009 - 2012

Year	Number of Fatalities per Province per Month										
	Month	GA	KZ	WC	EC	FS	MP	NW	LI	NC	RSA
2009	Jan	208	173	127	122	67	104	89	95	27	1,013
	Feb	153	158	75	95	50	98	64	77	18	787
	Mar	168	351	118	100	58	116	54	110	45	1,119
	Apr	237	246	80	118	81	140	111	133	21	1,165
	May	236	300	128	62	79	159	98	124	23	1,208
	Jun	155	226	112	99	66	146	104	148	17	1,072
	Jul	223	234	124	115	92	147	123	151	19	1,227
	Aug	192	283	88	170	82	147	123	123	26	1,235
	Sep	209	266	106	199	98	165	74	131	30	1,279
	Oct	204	190	88	131	101	161	82	146	28	1,132
	Nov	252	191	114	132	87	130	112	93	22	1,133
	Dec	248	237	125	200	106	161	97	162	61	1,398
2010	Jan	135	213	97	109	101	105	83	102	26	971
	Feb	181	235	105	60	66	99	70	127	72	1,015
	Mar	154	176	140	121	139	91	128	114	25	1,088
	Apr	100	274	98	195	106	117	65	121	23	1,099
	May	212	188	175	151	77	122	107	111	36	1,179
	Jun	136	266	89	180	98	144	88	130	43	1,174
	Jul	228	261	111	174	95	158	121	151	23	1,322
	Aug	178	252	98	174	89	131	114	149	28	1,213
	Sept	243	227	92	159	102	184	105	147	24	1,282
	Oct	226	236	98	153	91	127	87	114	45	1 177
	Nov	202	211	75	140	83	147	91	112	22	1 083
	Dec	186	248	144	168	123	166	100	151	79	1 365
2011	Jan	150	170	88	111	77	84	78	93	20	871
	Feb	235	171	93	137	58	107	67	102	13	982
	Mch	223	236	96	84	77	107	71	143	19	1,056
	Apr	240	255	96	119	118	164	88	136	33	1,248
	May	220	220	89	167	66	89	97	135	20	1,102
	Jun	238	254	95	112	78	157	85	151	28	1,196
	Jul	217	261	117	167	88	154	99	193	28	1,324
	Aug	203	209	102	113	69	98	98	113	20	1,025
	Sep	277	286	83	108	88	182	109	171	28	1,333
	Oct	222	236	78	175	69	158	73	157	25	1,194
	Nov	289	177	93	171	91	79	64	112	25	1,101
	Dec	202	276	155	189	138	260	90	168	36	1,515
2012	Jan	154	165	92	101	61	83	81	73	28	839
	Feb	195	228	85	109	63	101	78	138	32	1,030
	Mch	227	235	83	102	69	99	80	166	28	1,089
	Apr	187	211	113	111	117	114	87	185	33	1,157
	May	207	236	87	134	72	134	80	100	22	1,072
	Jun	222	216	102	126	81	167	120	138	43	1,214
	Jul	252	300	94	215	99	147	96	168	62	1,433
	Aug	259	211	80	132	77	131	103	145	33	1,171
	Sep	206	195	86	123	96	131	122	137	34	1,131
	Oct	34	149	91	97	80	100	91	82	39	763
	Nov	212	184	115	138	87	119	101	184	27	1,166
	Dec	250	250	144	200	139	152	116	172	40	1,463

Annexure F

Year	Number of Fatalities per Road User Group										
Month	User Group	GA	KZ	WC	EC	FS	MP	NW	LI	NC	RSA
Jan 2012	Drivers	48	38	28	30	19	29	25	23	10	250
	Passengers	30	52	30	35	30	36	29	28	10	280
	Pedestrians	75	75	33	35	13	18	27	23	9	309
	Total	154	165	92	101	61	83	81	73	28	839
Feb 2012	Drivers	56	70	18	27	23	29	35	38	11	306
	Passengers	56	69	27	37	35	41	18	66	12	360
	Pedestrians	84	90	41	45	6	32	25	34	9	364
	Total	195	228	85	109	63	101	78	138	32	1,030
Mch 2012	Drivers	43	61	24	22	39	29	24	50	11	301
	Passengers	59	83	17	30	23	38	28	75	11	364
	Pedestrians	124	92	43	51	8	32	27	41	7	424
	Total	227	235	83	102	69	99	80	166	28	1,089
Apr 2012	Drivers	45	50	35	41	15	30	21	40	10	286
	Passengers	47	46	33	35	82	40	27	88	17	414
	Pedestrians	95	116	45	35	20	44	38	57	7	456
	Total	187	211	113	111	117	114	87	185	33	1,157
May 2012	Drivers	48	42	21	17	29	39	29	22	9	255
	Passengers	61	48	32	74	23	62	33	44	11	388
	Pedestrians	98	146	34	43	21	33	19	33	2	429
	Total	207	236	87	134	72	134	80	100	22	1,072
Jun 2012	Drivers	54	56	30	40	30	47	45	55	12	369
	Passengers	54	40	23	31	34	92	52	55	19	400
	Pedestrians	115	120	50	55	17	27	23	28	12	446
	Total	222	216	102	126	81	167	120	138	43	1,214
Jul 2012	Drivers	95	68	28	32	20	58	43	41	16	402
	Passengers	42	91	27	126	59	48	23	73	32	522
	Pedestrians	115	140	39	56	20	41	30	54	14	509
	Total	252	300	94	215	99	147	96	168	62	1,433
Aug 2012	Drivers	56	53	25	42	23	49	38	40	13	339
	Passengers	112	63	26	50	33	56	33	65	16	454
	Pedestrians	91	95	28	40	20	25	33	40	4	377
	Total	259	211	80	132	77	131	103	145	33	1,171
Sep 2012	Drivers	65	53	14	39	33	40	37	33	14	328
	Passengers	32	44	27	52	33	47	64	55	14	368
	Pedestrians	109	98	45	32	30	44	21	50	5	434
	Total	206	195	86	123	96	131	122	137	34	1,131
Oct 2012	Drivers	13	44	35	34	34	30	46	32	9	277
	Passengers	4	31	21	16	38	36	37	34	21	237
	Pedestrians	17	75	35	47	8	33	8	17	8	249
	Total	34	149	91	97	80	100	91	82	39	763
Nov 2012	Drivers	65	38	36	41	23	37	34	53	10	336
	Passengers	61	51	34	47	23	39	40	101	9	404
	Pedestrians	86	95	44	50	41	44	28	30	9	426
	Total	212	184	115	138	87	119	101	184	27	1,166
Dec 2012	Drivers	75	56	33	51	43	55	47	44	10	412
	Passengers	69	79	59	114	81	65	42	70	17	596
	Pedestrians	106	115	52	36	15	32	28	58	12	455
	Total	250	250	144	200	139	152	116	172	40	1,463
Year Total	Drivers	662	628	327	415	328	472	423	472	134	3,861
	Passengers	627	695	357	647	493	602	426	752	188	4,787
	Pedestrians	1,115	1,256	489	525	220	405	307	465	98	4,880
	Total	2,404	2,579	1,173	1,587	1,041	1,479	1,156	1,689	420	13,528



Road Traffic Calendar Report
31 December 2012

Road Traffic Management Corporation

Physical Address	Boardwalk office park Boardwalk Boulevard Faerie Glen, 0043
Postal Address	Private Bag X147 Pretoria 0001
Telephone Number	012 999 5200
Website Address	www.rtmc.co.za

