



Road Traffic
Management Corporation



ROAD TRAFFIC CALENDAR REPORT

31 DECEMBER 2013



transport

Department:
Transport
REPUBLIC OF SOUTH AFRICA



Index

Section	Topic	Page
1	Executive Summary	7
1.1	Vehicle Population	7
1.2	Driver Population	7
1.3	Fatal Road Traffic Crashes and Fatalities	7
1.4	Measuring Progress towards Achieving Target to Reduce Fatalities by 50% by 2015	8
2	Vehicle Population	11
2.1	Number of Registered Vehicles	11
2.2	Unroadworthy and Unlicensed Vehicles	14
2.2.1	General	14
2.2.2	Number of Unroadworthy Vehicles	17
2.2.3	Number of Unlicensed Vehicles	19
3	Driver Population	22
3.1	Learner's Licences	22
3.2	Driving Licences Issued and Expired	24
3.2.1	Number of Driving Licences Issued	24
3.2.2	Number of Driving Licence Cards Expired	27
3.3	Professional Driving Permits (PrDPs) Issued and Expired	28
3.3.1	Number of Professional Driving Permits Issued	28
3.3.2	Number of Expired PrDPs	29
4	Fatal Road Traffic Crashes and Fatalities	31
4.1	Number of Fatal Crashes	31
4.2	Number of Fatalities	34
4.3	Number of Fatalities per Road User Group	37
4.4	Severity of Fatal Crashes	42
4.5	Crash and Fatality Rates and Trends per 10,000 Vehicles	44
4.6	Fatalities per 100,000 Human Population	47
5	Fatalities per Day-Of-Week & Time-Of-Day	49
5.1	Crashes Per Day Week	49
5.2	Number of crashes per Time of Day	50
5.3	Fatalities per Age Group	51

6	Major Accidents Investigated	51
6.1	Number of Major Accidents Investigated	51
6.2	Fatal Crashes Per Day of Week	52
6.3	Crash types	53
6.4	Contributory Factors	54
6.4.1	Vehicle Factors	54
6.4.2	Road Factor	55
6.4.3	Human Factor	56
6.5	Vehicles Involved In Major Crashes	57

ANNEXURES

A	Number of registered vehicles per province	ii
B-1	Number of unroadworthy vehicles	iii
B-2	Number of unlicensed vehicles	iv
B-3	Number of unroadworthy and unlicensed vehicles	v
C-1	Number of learner's licences issued	vi
C-2	Number of driver's licences issued	vii
C-3	Number of PrDPs issued	viii
D	Monthly number of fatal crashes per province	ix
E	Monthly number of fatalities per province	x
F	Number of road user group fatalities per province	xi

Preamble

Data Sources

The Road Traffic Management Corporation (RTMC) as the lead agency on road traffic safety and management, gathers road crash data from the South African Police Service (SAPS), Provincial Traffic Authorities, and Metropolitan Municipalities through Accident Report and the Quick Response forms.

The Accident Report forms are used to record data for all crash types (all injury types and damage only) while the Quick Response forms are mainly used to record fatal crashes and are captured only by the Corporation. Upon receipt of the Accident Report Forms some Metropolitan Municipalities, Provincial Traffic Authorities and the Corporation capture the data recorded on the forms.

For the purpose of compiling this report, other data sources were considered in order to provide a wide-ranging report. The former mentioned data sources are as follows:

- SAPS, for the Culpable Homicide case information, CAS Analysis Report,
- National Traffic Information System (eNatis), for vehicle and driver information,
- Statistics South Africa (Stats SA), for human population and labour force data,

LIMITATIONS

The CAS Analysis Report received from the SAPS assists with data validation of the data already received from the various Police Stations regarding fatal crashes only.

In the reporting and capturing of road crash data it sometimes happens that crashes are duplicated. The verification of data is a lengthy and time consuming manual process, which amongst others involves the comparison of the initial data received from various police stations at the time of the crash with that received from the central SAPS database. The process also involves the identification and elimination of duplicated reports; as well as follow-ups on the un-confirmed crash data.

Road Traffic in 2013

Observed Changes in 2013:

A reduction has been observed for variables for the period under review:

- a) Crashes Fatalities (12.45%) from 13 528 to 11 844
- b) Number of fatal crashes per 10,000 motorised vehicles (0.18%) from 12.29 to 12.27
- c) Number of fatalities per 10,000 motorised vehicles (3.75%) from 15, 84 to 15,25

The downward trend of the variables above may be attributed to the following programmes undertaken by RTMC for the period under review:

- **National Rolling Enforcement Plan (2013):** Approved and signed off. The activities were conducted in collaboration with the provincial and municipal traffic departments.
The following achievements were recorded:
 - Number of vehicles stopped and screened = **11883429**
 - Number of notices issued = **4 988 958**
 - Number of vehicles discontinued / suspended / impounded = **61804**
 - Number of people arrested for all road traffic offences including driving whilst under the influence, dangerous driving, fraudulent public passenger transport documentation and other serious offences = **28 995**

Road Safety Education projects:

- Scholar Patrol programme in all nine provinces: 19 660 learners participating;
- Road Safety Schools Debates: 35 learners participated; and
- Participatory Educational Techniques: 70 learners in 7 schools participated.

Road Traffic Law Enforcement

- Effective and efficient co-ordination of road traffic law enforcement across the three tiers of government as per the National Rolling Enforcement Plan (NREP);
- Identification of and greater focus on critical offences as per the major crash investigation;
- Target of stopping and checking one million vehicles per month, nation-wide;.
- Inclusion of special enforcement blitzes; and
- Greater media awareness of traffic law enforcement activities and interventions.

National Traffic Police

The Corporation established the National Traffic Police (NTP) which operates on a 24/7 basis. 221 traffic police and Superintendents and a National Chief of Traffic Police were appointed to capacitate the unit.

The following is progress on the unit's operations during the 3rd and 4th quarter of the year:

436 operations conducted which included some of the following:

- 52 of which were joint operations (roadblocks);
- 312 Roadside check points;
- 04 Learner transport checks;
- 30 Drunk driving checks;
- 08 Public Transport checks; and
- 12 Crime prevention operations.

The output there of was the:

- 33568 prosecutions (citation or prosecution) were written;
- 480 vehicles discontinued; and
- 9330 infringements written.

1. EXECUTIVE SUMMARY

1.1		Vehicle Population
	1.1.1	The number of registered vehicles increased by 395 513. (3.73%) from 10 610 671 on 31 December 2012 to 11 006 184 vehicles on 31 December 2013.
	1.1.2	On a percentage basis the biggest change was for buses which increased by 5.43% to 54 494, followed by motorcars which increased by 4.35% to 6 376 656.
1.2		Driver Population
	1.2.1	The number of learner driving licences issued decreased by -61 818(4.71%) from 1 331 996 on 31 December 2012 to 1 250 178 on 31 December 2013.
	1.2.2	The number of driving licences issued increased by 962 594 (9.94%) from 10 155 165 on 31 December 2012 to 10 645 046 on 31 December 2013.
	1.2.3	The number of Professional Driving Permits (PrDPs) issued increased by 32 639 (3.47%) from 939 506 on 31 December 2012 to 972 145 on 31 December 2013.
1.3		Fatal Crashes and Fatalities
	1.3.1	Over the 12 months period from 1 January 2013 to 31 December 2013 the number of fatal crashes decreased by 807 (7.35%) from 10 977 crashes over the same period the previous year (2012) to 10 170.
	1.3.2	Over the 12month period from 1 January 2013 to 31 December 2013 the number of fatalities decreased by 1 684 (12.45%) from 13 528 fatalities over the same period the previous year to 11 844.
	1.3.3	The driver fatalities decreased by 166 (4.30%) from 3 861 in 2012 to 3 695 in 2013. Passenger fatalities decreased by 863 (18.03%) from 4 787 to 3 924 and pedestrian fatalities decreased by 655 (813.42%) from 4 880 to 4 552 over the 12-month period from 1 January 2013 to 31 December 2013.
	1.3.4	The severity of fatal crashes decreased by 0.07 (5.50%) from 1.23 during 2012 to 1.16 during 2013.
	1.3.5	The number of fatal crashes per 10 000 registered motorised vehicles decreased by 1.26 (10.75%) from 11.71 during 2012 to 10.45 during 2013.
	1.3.6	The number of fatalities per 10000 registered motorised vehicles decreased by 2.26 (15.66%) from 14.43 during 2012 to 12.17 during 2013.
	1.3.7	The national number of fatalities per 100000 human population decreased by 3.61 (13.90%) from 25.94 during 2012 to 22.34 during 2013.

1.4 Measuring Progress towards Achieving Target to Reduce Fatalities by 50% by 2015.

Based on the 2006 Millennium Development Goals, one of the goals of the 2015 Road Traffic Safety Management Plan is to reduce by half the rate of accident fatalities arising from road and other transport by 2015. The current report will be focusing on the road fatalities, while other transport reporting will be reported on by relevant lead agencies.

In the development of the 2015 plan it was agreed that the number of all transport fatalities for the year 2007 would be used as the benchmark on which the 50% reduction would be based. Using this benchmark and the 50% target reduction, the maximum allowable number of road fatalities per quarter per province up to the end of 2015 was calculated as continuous reduced target figures over the 8 year period. These set targets for the indicated quarters for each province and the RSA total, are shown in Table 1 below, shown as "Target" figures or maximum allowable number of fatalities.

Table 1: Rolling 12 months number of road fatalities per province

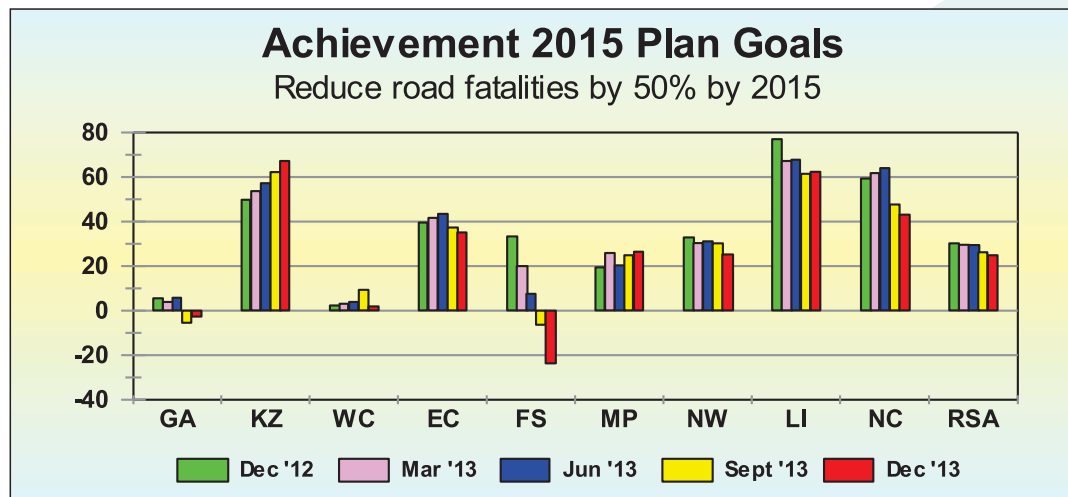
Achievement of 2015 Plan Goal to Reduce Road Fatalities by 50% by 2015											
Rolling 12 month Number of Road Fatalities per Province											
Month	Item	GA	KZ	WC	EC	FS	MP	NW	LI	NC	RSA
Dec '12	Target	2,279	1,722	1,146	1,137	780	1,238	870	954	264	10,389
	Actual	2,404	2,579	1,173	1,587	1,041	1,479	1,156	1,689	420	13,528
	Difference	125	858	27	450	261	241	286	735	156	3,139
	% Diff	5.50	49.82	2.39	39.52	33.39	19.47	32.89	77.01	59.35	30.21
Mar '13	Target	2,228	1,683	1,120	1,112	763	1,210	850	932	258	10,155
	Actual	2,315	2,587	1,155	1,576	915	1,523	1,108	1,559	417	13,156
	Difference	88	904	35	464	153	313	258	627	159	3,001
	% Diff	3.94	53.72	3.16	41.71	20.02	25.89	30.34	67.25	61.78	29.55
Jun '13	Target	2,177	1,645	1,095	1,087	746	1,182	831	911	252	9,926
	Actual	2,304	2,586	1,138	1,559	802	1,424	1,089	1,530	413	12,844
	Difference	127	941	43	472	57	241	258	618	161	2,918
	% Diff	5.83	57.24	3.94	43.44	7.58	20.39	31.06	67.82	63.96	29.40
Sept '13	Target	2,128	1,608	1,070	1,062	729	1,156	812	891	246	9,702
	Actual	2,021	2,607	1,169	1,459	681	1,444	1,058	1,439	363	12,241
	Difference	-107	1,000	99	397	-48	288	246	548	117	2,539
	% Diff	-5.03	62.18	9.29	37.33	-6.61	24.90	30.28	61.48	47.61	26.17
Dec '13	Target	2,080	1,571	1,046	1,038	712	1,130	794	871	241	9,483
	Actual	2,027	2,627	1,065	1,403	541	1,429	994	1,414	344	11,844
	Difference	-53	1,056	20	365	-172	299	201	543	104	2,361
	% Diff	-2.57	67.17	1.88	35.11	-24.11	26.47	25.26	62.34	43.11	24.90

Also shown in the table above are the “Actual” figures, which reflect the real number of road fatalities recorded per province for the respective quarters as indicated. Both the Target and Actual figures represent the 12 month rolling total fatality figures per province and the RSA on a national basis.

The difference as well as the percentage difference figures in the table shows the difference between the set Target and Actual number of road fatalities. A difference of “0” indicates that the set target of reducing the number of fatalities was met. Differences smaller than “0” (<0) show achievements better than what is expected or required and differences larger than “0” (>0) show that the required targets were not achieved and reflect inadequate performance towards reaching the desired goal per quarter and ultimately the 2015 goal.

The % difference in meeting the set targets per province is also reflected in figure below:

Figure 1: % Difference for rolling 12 months number of road fatalities per province



The information in Table 1 and Figure 1 above show that better performing provinces (differences less than “0”) that are well on track towards achieving the goal of reducing road fatalities by 50% by the year 2015, amongst others are:

- Gauteng: shows a slight improvement in performance from -5.50% in December 2012 to -2.5% in December 2013.
- Free State: shows a continuous improvement in performance from 33.39% in December 2012 to -24.11% in December 2013.

The provinces that are not performing as required, (differences larger than “0”) are the following:

- Mpumalanga: has shown a gradual increase from its best level of 19.47% in December 2012 to 26.47% in December 2013.
- KwaZulu-Natal: overall the worst performing province, with even a continuous increase in the quarterly number of road fatalities that exceed the set quarterly targets for the province – ranging from 49.82% in December 2012 to 67.17% in December 2013. This province was the biggest contributor to the RSA fatalities, on a national basis not achieving its set target towards the end of the review period.
- Limpopo: made no contribution towards achieving the 2015 goals. Over the review period the performance of this province with a slight decrease from 77.01% in December 2012 to 62.34%% in December 2013.
- National - RSA: over the review period the national figures range from 30.21% in December 2012 to 24.90% in December 2013.

The country's performance towards the reduction of fatalities by 50% for the assessed period is deteriorating. The worst performing provinces listed above, contributed to this non-achieving trend, with the biggest negative influence from KwaZulu-Natal and Limpopo.

With performance towards achieving the targets deteriorating, this necessitates tightened interventions and special focus in those areas especially within law enforcement and continued education campaigns.

2. VEHICLE POPULATION

2.1 Number of Registered Vehicles

The number of registered vehicles increased by 395 513 (3,73%) from 10 610 671 on 31 December 2012 to 11 006 184 vehicles on 31 December 2013. Detail per type of vehicle is given in Table 2 below:

Table 2: Number of Registered Vehicles

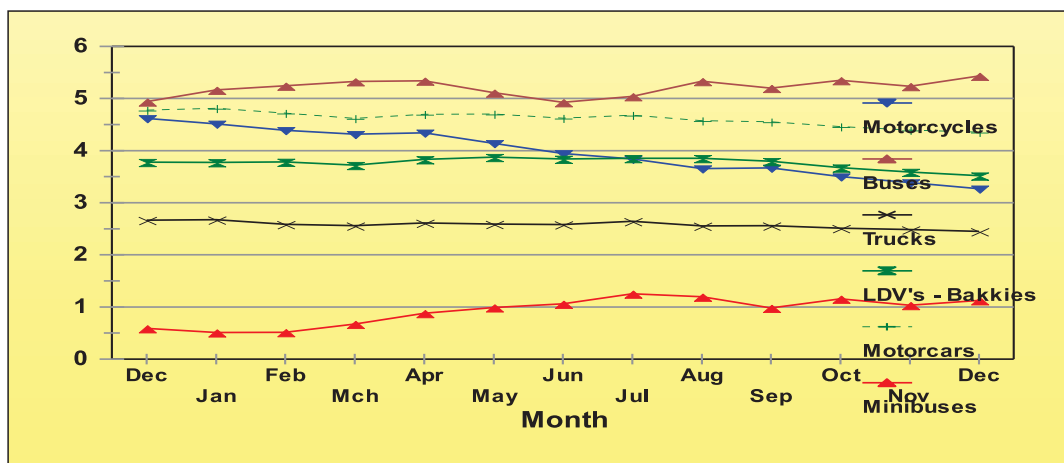
Motorised Vehicles	Number registered Dec 2012	Number registered Dec 2013	Change	% Change	% of Group Dec 2013	% of Total Dec 2013
Motorcars	6,110,556	6,376,656	266,100	4.35	61.66	55.52
Minibuses	285,855	289,077	3,222	1.13	2.88	2.60
Buses	51,686	54,494	2,808	5.43	0.52	0.47
Motorcycles	355,616	367,231	11,615	3.27	3.59	3.23
LDV's - Bakkies	2,152,713	2,228,506	75,793	3.52	21.72	19.56
Trucks	342,122	350,498	8,376	2.45	3.45	3.11
Other & Unknown	241,067	243,461	2,394	0.99	2.43	2.19
Total Motorised	9,539,615	9,909,923	370,308	3.88	100.00	90.04
Towed Vehicles						
Caravans	104,845	104,594	-251	-0.24	9.54	0.95
Heavy Trailers	164,908	171,678	6,770	4.11	15.66	1.56
Light Trailers	784,484	803,297	18,813	2.40	73.28	7.30
Other & Unknown	16,819	16,692	-127	-0.76	1.52	0.15
Total Towed	1,071,056	1,096,261	25,205	2.35	100.00	9.96
All Vehicles	10,610,671	11,006,184	395,513	3.73		100.00

Source: eNatis

The table above shows that on a percentage basis the biggest change was for buses and motorcars which both increased by 5.43% from 51 686 to 54 494 and by 4.35% from 6 110 556 to 6 376 656, respectively, followed by heavy trailers by 4.11% from 164 908 to 171 678. Light trailers increased by 2.40% from 784 484 to 803 297.

The monthly percentage change over the past year for specific types of vehicles as well as motorised and towed vehicles, are shown in figure 2 below:

Figure 2: Annual percentage change in motorised vehicles per month



Source: eNatis

The total motor vehicle population per province for December 2012 and December 2013 respectively, is given in Table 3 and reflected in figure 3.

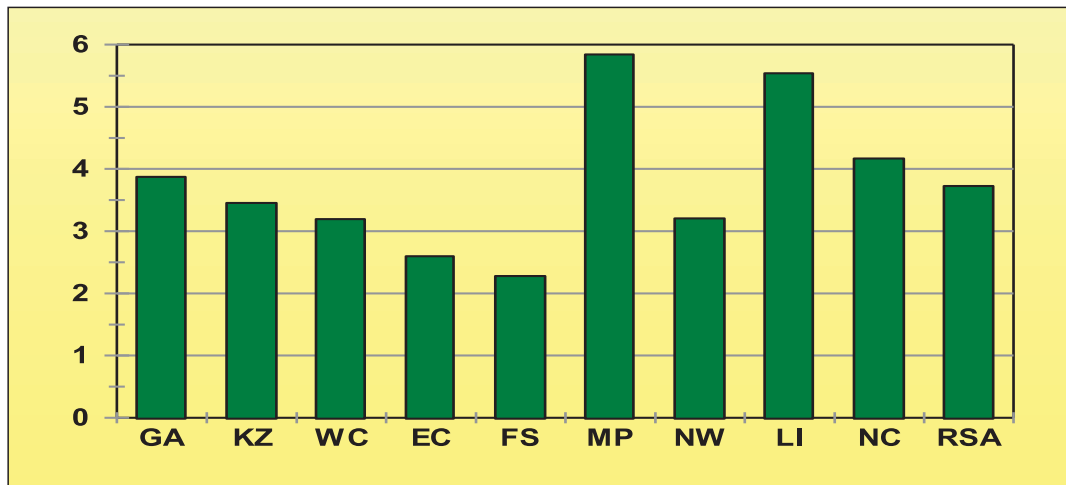
Table 3: Number of Registered Vehicles per Province

Province	Number registered Dec 2012	Number registered Dec 2013	Change	% Change	% of Total Dec 2013
Gauteng	4,112,343	4,271,588	159,245	3.87	38.81
KwaZulu-Natal	1,438,997	1,488,702	49,705	3.45	13.53
Western Cape	1,698,173	1,752,417	54,244	3.19	15.92
Eastern Cape	715,548	734,139	18,591	2.60	6.67
Free State	579,461	592,665	13,204	2.28	5.38
Mpumalanga	718,213	760,170	41,957	5.84	6.91
North West	546,669	564,193	17,524	3.21	5.13
Limpopo	558,813	589,751	30,938	5.54	5.36
Northern Cape	242,454	252,559	10,105	4.17	2.29
RSA	10,610,671	11,006,184	395,513	3.73	100

Source: eNatis

The number of registered vehicles per province show the highest increase was in Mpumalanga with an increase of 5.84% from 718 213 in 2012 to 760 170, followed closely by Limpopo, with an increase of 5.54% from 558 813 to 589 751

Figure 3: Annual percentage growth in vehicles population per province

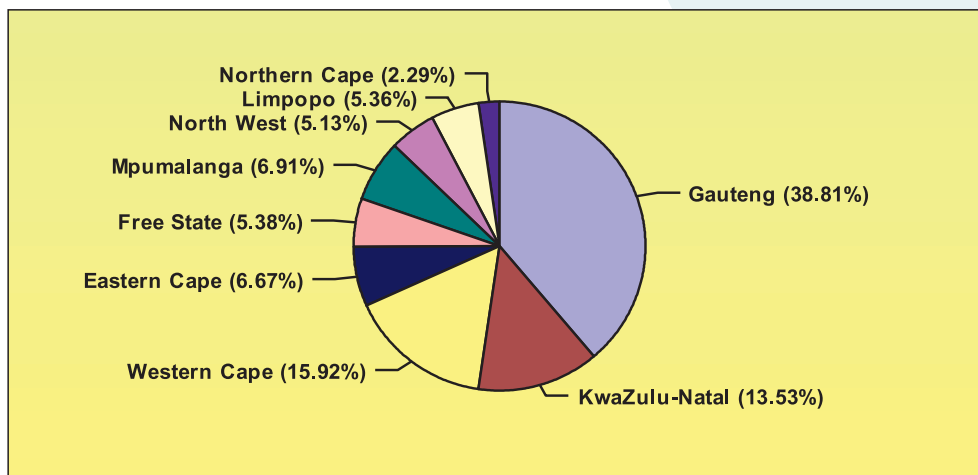


Source: eNatis

All the provinces recorded an increase in vehicle growth. The province with the least increase in registered vehicles is the Free State with a 2.28% increase from 579 461 to 592 665.

The percentage vehicles registered per province on 31 December 2013 is reflected in the figure below:

Figure 4: Percentage of registered vehicles per province



Source: eNatis

The information in the figure above shows that 38.81% of all vehicles are registered in Gauteng; 15.92% in Western Cape and 13.53% in KwaZulu-Natal.

2.2 UNROADWORTHY AND UNLICENSED VEHICLES

2.2.1 General

Unroadworthy vehicles is defined as those of which the owners failed to submit the vehicles for compulsory annual roadworthy tests (including buses, minibus taxis and freight transport vehicles) or on change of ownership. Unlicensed vehicles are those of which the owners failed to renew the vehicle licences within the time frame allowed.

On a national basis the total number of vehicles that are either unroadworthy, unlicensed or both increased by 48 174 (5.43%) from 886 554 vehicles on 31 December 2012 to 934 728 vehicles on 31 December 2013.

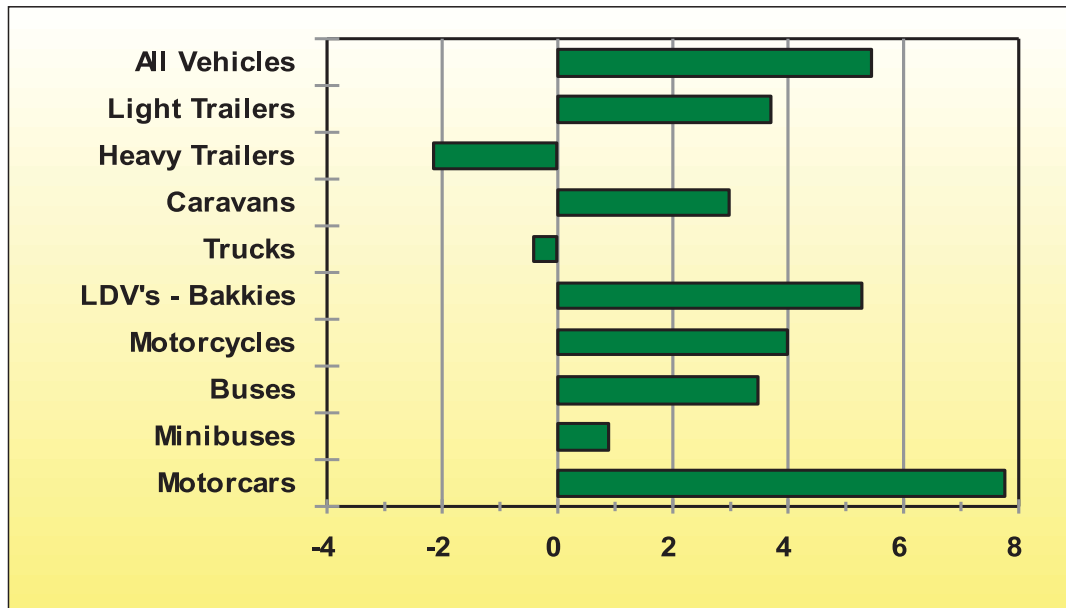
Detail in this regard per type of vehicle is provided in Table 4 and the percentage (%) change from 2012 to 2013 reflected in figure 5

Table 4: Number of Unroadworthy, Unlicensed Vehicles or Both

Vehicle Type	Dec 2012	Dec 2013	Change	% Change
Motorcars	454,668	489,838	35,170	7.74
Minibuses	54,871	55,345	474	0.86
Buses	7,596	7,860	264	3.48
Motorcycles	61,646	64,104	2,458	3.99
LDV's - Bakkies	146,897	154,672	7,775	5.29
Trucks	62,731	62,471	-260	-0.41
Caravans	6,625	6,823	198	2.99
Heavy Trailers	23,368	22,866	-502	-2.15
Light Trailers	46,618	48,341	1,723	3.70
Unknown	21,534	22,408	874	4.06
All Vehicles	886,554	934,728	48,174	5.43

Source: eNatis

Figure 5: Percentage change in Number of Vehicles Unroadworthy OR Unlicensed OR Both



Source: eNatis

With an exception of Heavy Trailers and Trucks, increases were recorded for most types of vehicles in the number of Unroadworthy, Unlicensed or both. The biggest increase was recorded for Motorcars, and the biggest decrease was recorded for Heavy Trailers.

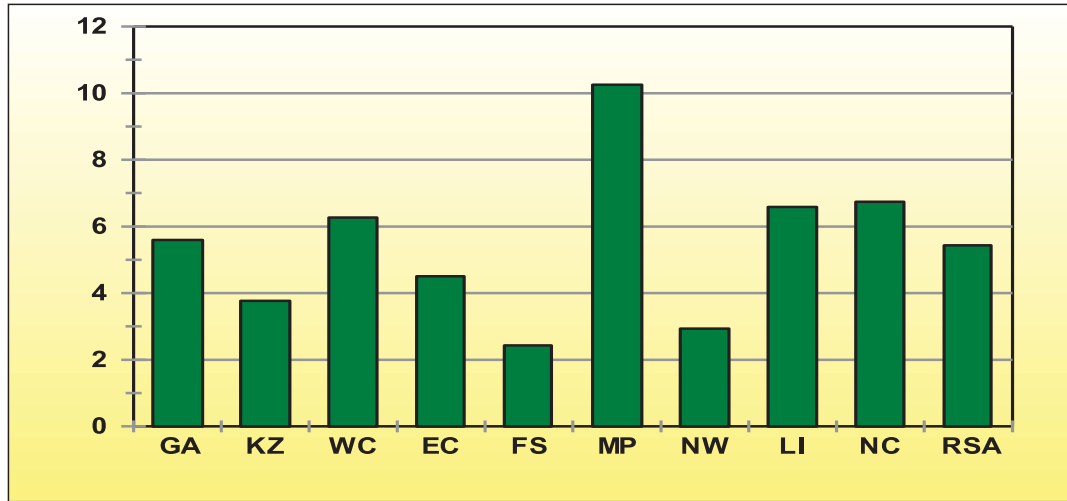
Detail on the number of vehicles that are either unroadworthy, unlicensed or both per province is provided in Table 5 and the percentage (%) change from 2012 to 2013 reflected in figure 6.

Table 5: Number of Vehicles that is Unroadworthy OR Unlicensed OR Both

Year	GA	KZ	WC	EC	FS	MP	NW	LI	NC	RSA
Dec 2012	367,434	122,018	100,357	59,792	54,853	67,655	48,518	49,798	16,129	886,554
Dec 2013	387,976	126,611	106,647	62,483	56,187	74,592	49,941	53,075	17,216	934,728
Change	20,542	4,593	6,290	2,691	1,334	6,937	1,423	3,277	1,087	48,174
% Change	5.59	3.76	6.27	4.50	2.43	10.25	2.93	6.58	6.74	5.43

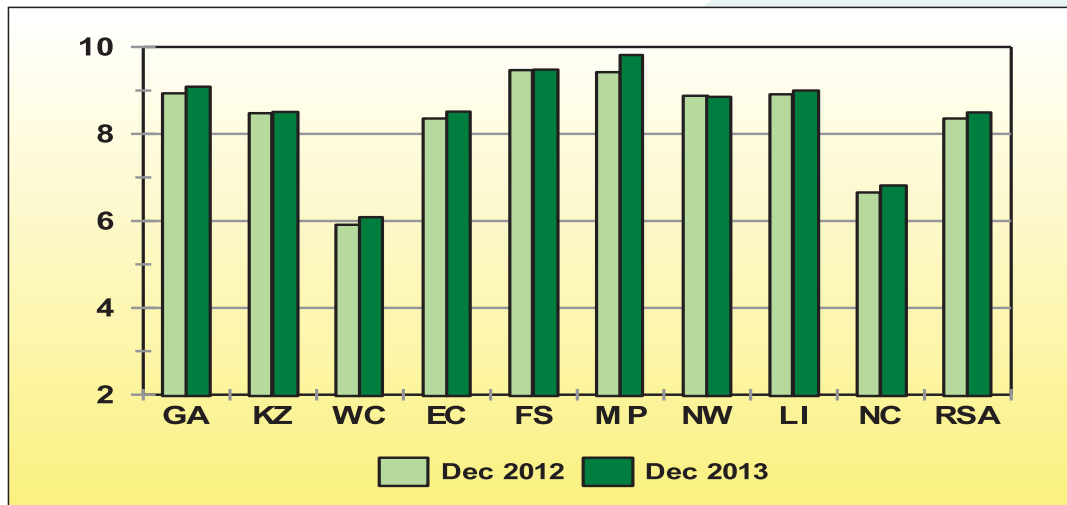
Source: eNatis

Figure 6: Percentage change in Number of Vehicles Unroadworthy OR Unlicensed OR Both



Source: eNatis

Figure 7: Percentage of Unroadworthy and Unlicensed Vehicles



Source: eNatis

The information in the table 5 and figure 6 shows that all provinces recorded an increase in the number of vehicles that are Unroadworthy or Unlicensed or both. On a provincial percentage basis the biggest increase was recorded in Mpumalanga whereby the number on vehicles in this regard increased by 6 937 (10.25%), followed by Northern Cape with 6.74%.

2.2.2 Number of Unroadworthy Vehicles

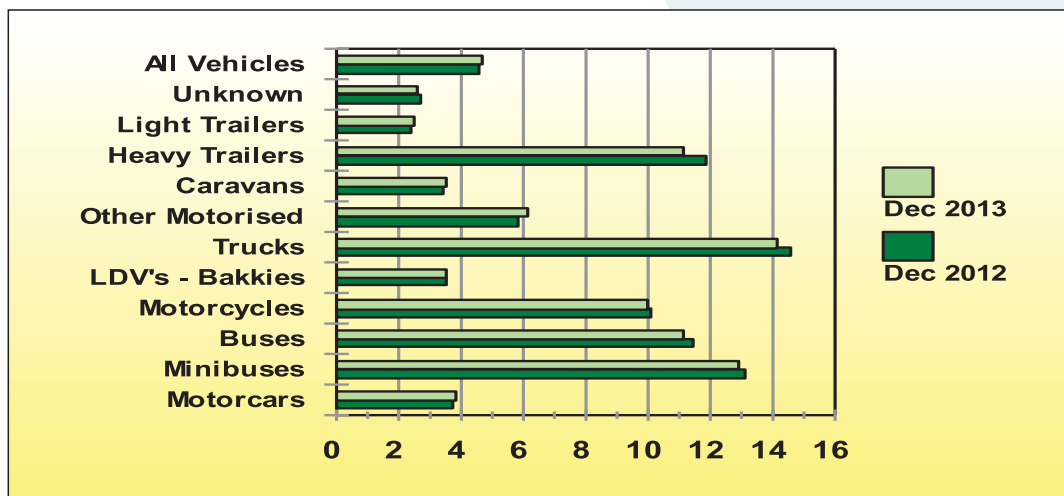
The number of vehicles that are unroadworthy (but licenced) increased by 19 219 (3.93%) from 489 376 vehicles on 31 December 2012 to 508 595 vehicles on 31 December 2013. Detail in this regard is given in Table 6 and the percentage of unroadworthy vehicles per type of vehicle, as a percentage of the number registered, is reflected in the graph below.

Table 6: Number of Unroadworthy Vehicles

Vehicle Type	Dec 2012	Dec 2013	Change	% Change
Motorcars	229,416	243,306	13,890	6.05
Minibuses	37,473	37,294	-179	-0.48
Buses	5,904	6,075	171	2.90
Motorcycles	35,832	36,667	835	2.33
LDV's - Bakkies	75,223	78,412	3,189	4.24
Trucks	49,916	49,627	-289	-0.58
Caravans	3,625	3,710	85	2.34
Heavy Trailers	19,609	19,169	-440	-2.24
Light Trailers	18,373	19,676	1,303	7.09
Unknown	14,005	14,659	654	4.67
All Vehicles	489,376	508,595	19,219	3.93

Source: eNatis

Figure 8: Percentage of Unroadworthy Vehicles



Source: eNatis

The information in the table and graph above shows that with exception of minibuses, trucks and heavy trailers, all other vehicle types experienced increases in this regard.

The biggest increase was recorded for light trailers which increased by 1 303 (7.09%) from 18 373 at the end of December 2012 to 19 676 unroadworthy at the end of December 2013.

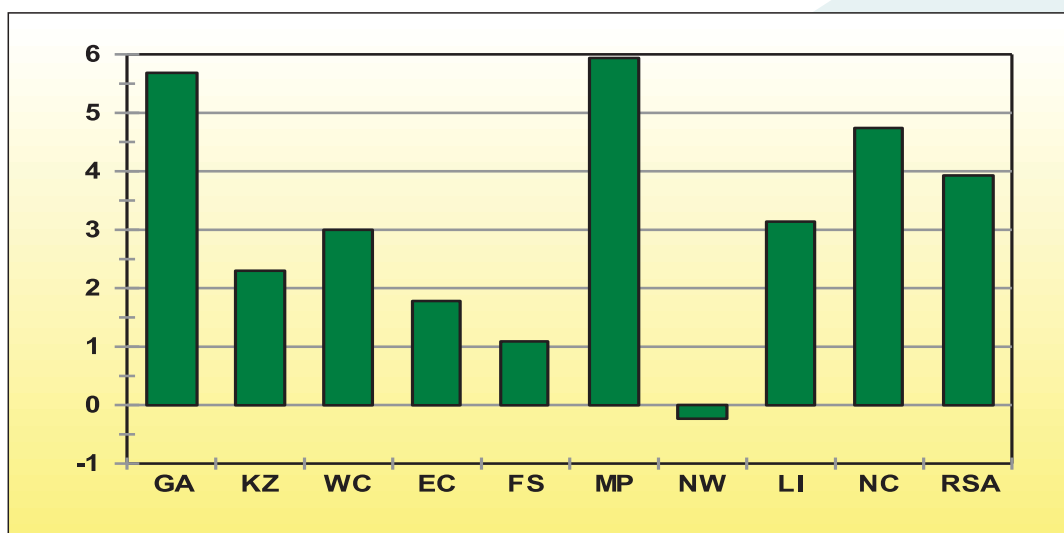
Detail on the number of vehicles that are unroadworthy per province is provided in Table 7 and the percentage (%) change from 2012 to 2013 reflected in figure 9.

Table 7: Number of Unroadworthy Vehicles

Year	GA	KZ	WC	EC	FS	MP	NW	LI	NC	RSA
Dec 2012	205,280	70,166	54,634	29,155	31,959	39,168	25,759	24,989	8,266	489,376
Dec 2013	216,944	71,778	56,272	29,674	32,307	41,493	25,696	25,773	8,658	508,595
Change	11,664	1,612	1,638	519	348	2,325	-63	784	392	19,219
% Change	5.68	2.30	3.00	1.78	1.09	5.94	-0.24	3.14	4.74	3.93

Source: eNatis

Figure 9: Percentage Change in Number of vehicles that are Unroadworthy per Province

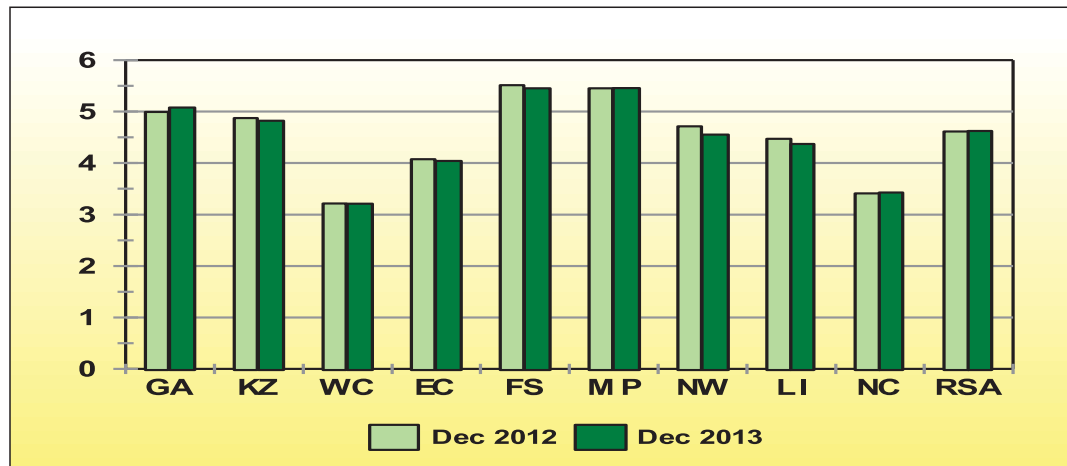


Source: eNatis

The information in the table and graph above shows that with the exception of the North West all provinces recorded an increase in the number of unroadworthy vehicles. On a percentage basis the biggest decrease was recorded in Mpumalanga where the number of unroadworthy vehicles increased by 2 325 (5.94%) from 39 168 in 2012 to 41 493 at the end of December 2013. Other large decreases in this regard are: Gauteng where the number of unroadworthy vehicles increased by 11 664 (5.68%) from 205 280 in 2012 to 216 944 at the end of December 2013, followed by Northern Cape with a increase of 4.74%.

The percentage of unroadworthy vehicles per province, expressed as a percentage of the total number of vehicles registered per province, is shown in figure 10.

Figure 10: Percentage of Unroadworthy Vehicles



Source: eNatis

2.2.3 Number of Unlicensed Vehicles

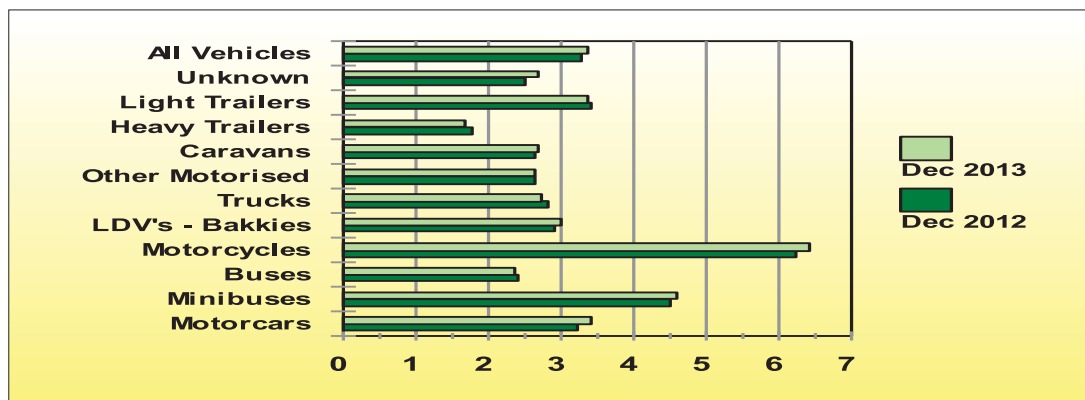
Nationally the number of unlicensed vehicles increased by 25 689(7.43%) from 345 828 vehicles on 31 December 2012 to 371 517 vehicles on 31 December 2013. Detail per type of vehicle in this regard is given in Table 8 and the percentage of unlicensed vehicles per type of vehicle, as a percentage of the number registered, is reflected in figure 11.

Table 8: Number of Unlicensed Vehicles

Vehicle Type	Dec 2012	Dec 2013	Change	% Change
Motorcars	197,905	217,387	19,482	9.84
Minibuses	12,873	13,302	429	3.33
Buses	1,253	1,289	36	2.87
Motorcycles	22,152	23,489	1,337	6.04
LDV's Bakkies	62,813	66,949	4,136	6.58
Trucks	9,654	9,542	-112	-1.16
Caravans	2,764	2,824	60	2.17
Heavy Trailers	2,957	2,853	-104	-3.52
Light Trailers	26,700	27,027	327	1.22
Unknown	6,757	6,855	98	1.45
All Vehicles	345,828	371,517	25,689	7.43

Source: eNatis

Figure 11: Percentage of Unlicensed Vehicles



Source: eNatis

The information in table 8 shows that with the exception of trucks and heavy trailers all other vehicle types recorded an increase in the number of unlicensed vehicles. On a percentage basis the biggest increase was recorded for motorcars with 9.84% from 197 905 down to 217 387.

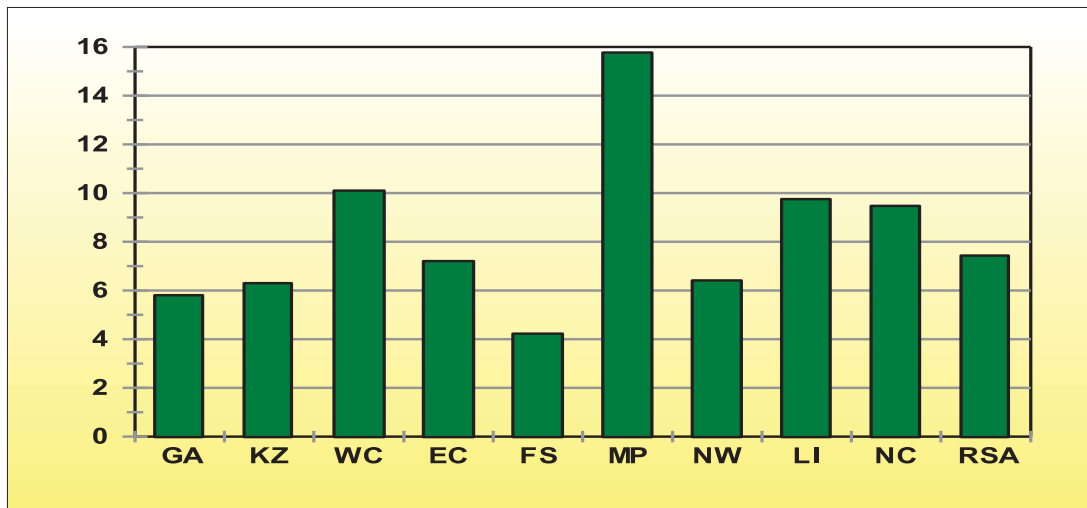
Detail on the number of vehicles that are unlicensed per province is provided in Table 9 and the percentage (%) change from 2012 to 2013 reflected in figure 12.

Table 9: Number of Unlicensed Vehicles

Year	GA	KZ	WC	EC	FS	MP	NW	LI	NC	RSA
Dec 2012	143,421	44,034	40,510	26,677	19,387	23,909	19,894	20,989	7,007	345,828
Dec 2013	151,750	46,807	44,601	28,599	20,206	27,679	21,169	23,035	7,671	371,517
Change	8,329	2,773	4,091	1,922	819	3,770	1,275	2,046	664	25,689
% Change	5.81	6.30	10.10	7.20	4.22	15.77	6.41	9.75	9.48	7.43

Source: eNatis

Figure 12: Percentage Change in number of vehicles that are Unlicensed

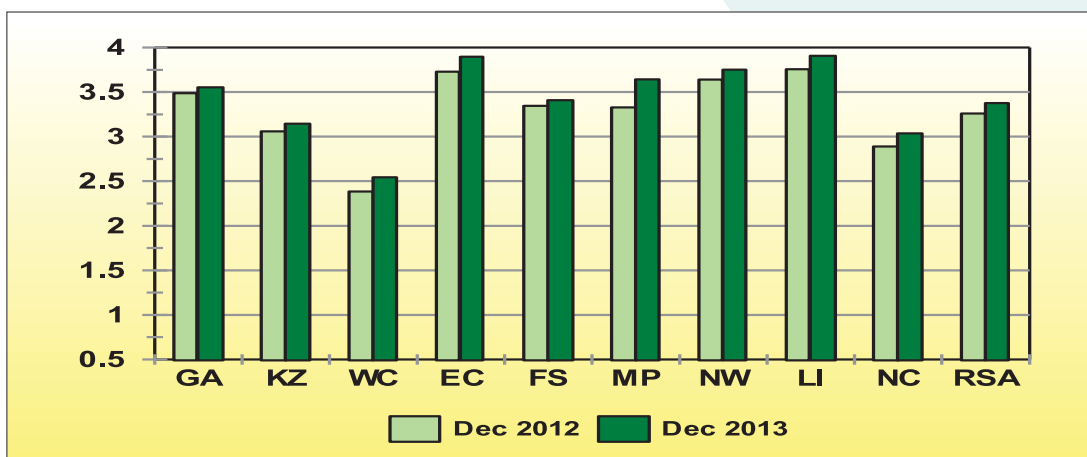


Source: eNatis

The information in the table and graph above show that the biggest increase in the number of unlicensed vehicles were recorded in Mpumalanga (15.77%), followed by Western Cape, Limpopo and Northern Cape with 10.10%, 9.75% and 9.48% respectively.

The percentage of unlicensed vehicles per type of vehicle, as a percentage of the number registered per province, is reflected in figure 13.

Figure 13: Percentage of Unlicensed Vehicles



Source: eNatis

Detailed information on the number of unroadworthy and unlicensed vehicles per type of vehicle per province is provided in the tables under **Annexure B**.

3. DRIVER POPULATION

3.1 Learner's Licences

The number of learner's licences issued decreased by 61,818 (4.71%) from 1311996 on 31 December 2012 to 1 250 178 on 31 December 2013. Detail on the number of learner driving licences issued per category is given in Table 10 and graphically reflected in figure 14 below:

Table 10: : Number of Learner Licences Issued

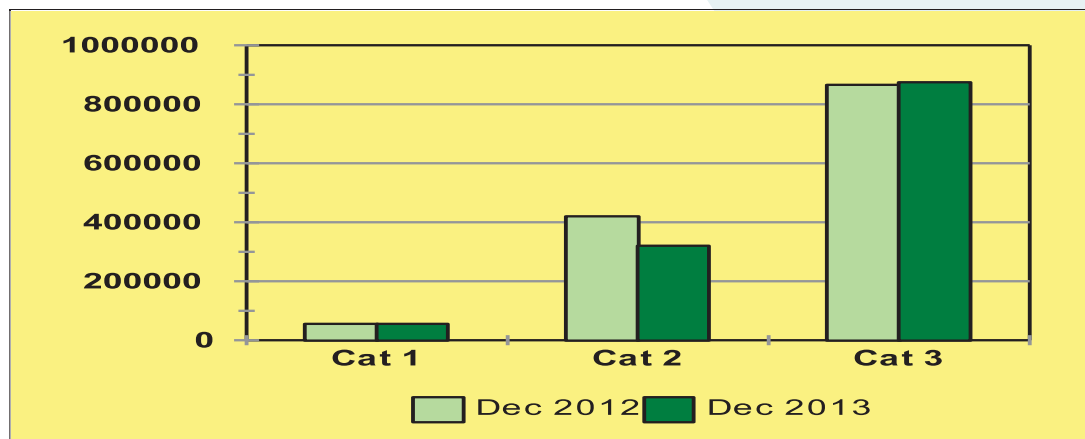
Category	Dec 2012	Dec 2013	Change	% Change
	58,484	55,708	-2,776	-4.75
2	370,815	320,282	-50,533	-13.63
3	882,697	874,188	-8,509	-0.96
Total	1,311,996	1,250,178	-61,818	-4.71

Source: eNatis

Learner Licences:

- Category 1: Motorcycle
- Category 2: Light Motor Vehicle
- Category 3: Heavy Motor Vehicle

Figure 14: Number of learner licence issued



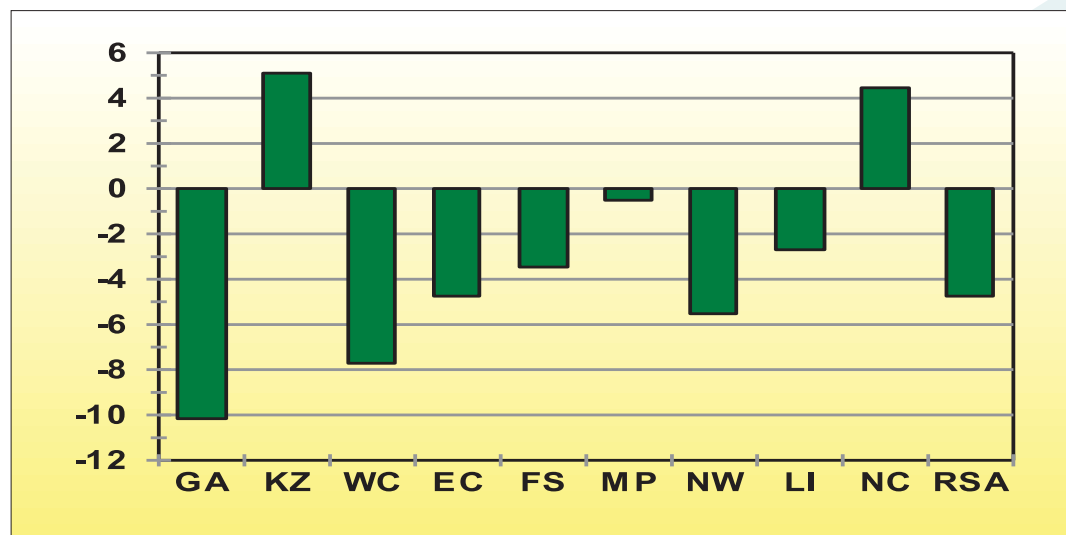
Source: eNatis

Provincial information in this regard is given in Table 11 and the percentage change per province over the 12 month period is reflected in figure 15

Table 11: Number of Learner Licences Issued per Province

Year	GA	KZ	WC	EC	FS	MP	NW	LI	NC	RSA
Dec 2012	423,756	193,916	195,059	112,136	71,472	103,341	68,866	113,940	29,510	1,311,996
Dec 2013	380,989	203,797	179,902	106,768	69,027	102,866	65,074	110,931	30,824	1,250,178
Change	-35,849	10,155	-28,593	-11,167	-11,923	-4,349	-8,194	-2,449	1,704	-61,818
% Change	-8.60	5.24	-13.71	-9.47	-14.73	-4.06	-11.18	-2.16	5.85	-4.71

Source: eNatis

Figure 15: % Change in Learner Licences Issued

Source: eNatis

Three provinces, Free State, Western Cape and North West recorded the highest decrease in the number of Learner Licences issued, by percentages of 14.73%, 13.71% and 11.18% respectively. Only two provinces recorded an increase i.e. Northern Cape with 5.85% and for KwaZulu-Natal with 5.24%.

3.2 Driving Licences Issued and Expired

3.2.1 Number of Driving Licences Issued

The number of driving licences issued increased by 962 594 (9.94%) from 10155165 on 31 December 2012 to 10645046 on 31 December 2013. Detail on the number of driving licences issued per category is given in Table 12 and graphically reflected in figure 16.

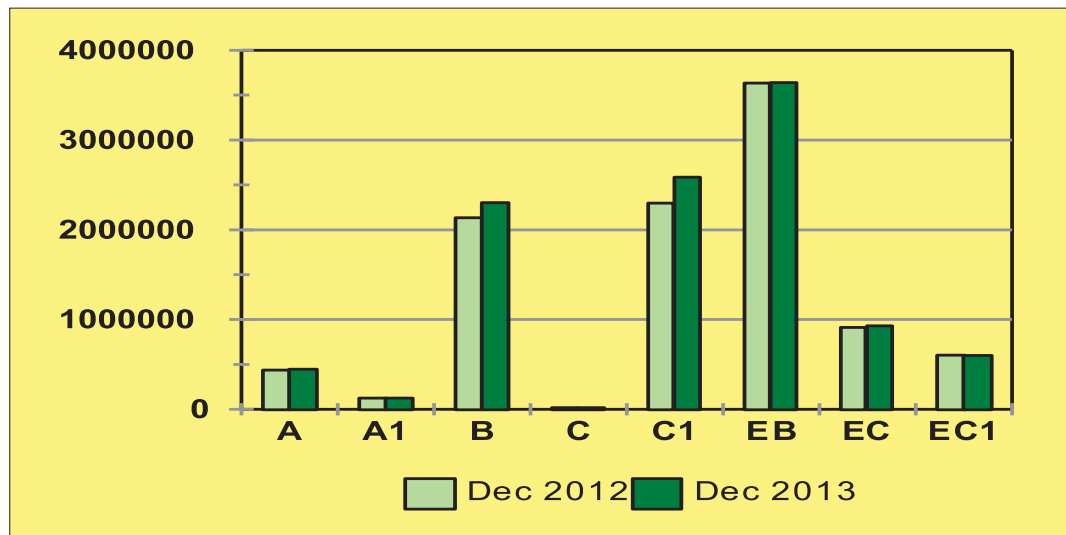
Table 12: Number of Driving Licences Issued

Category	Dec 2012	Dec 2013	Change	% Change
A	437,914	446,772	16,900	3.93
A1	123,356	123,455	183	0.15
B	2,135,130	2,301,907	340,119	17.34
C	18,001	19,067	2,245	13.35
C1	2,296,011	2,586,914	564,135	27.89
EB	3,632,643	3,638,577	10,436	0.29
EC	910,885	929,236	32,513	3.63
EC1	601,225	599,118	-3,937	-0.65
Total	10,155,165	10,645,046	962,594	9.94

Source: eNatis

Driving licences Category

A	Motorcycle > 125 cub.cm	A1	Motorcycle < 125 cub.cm	B	Motor vehicle < 3,5000 kg
C	Motorvehicle > 16,000 kg	C1	Motor vehicle 3,500 – 16,000 kg	EB	Articulated motor vehicle <16,000 kg
EC	Articulated vehicle > 16,000 kg	EC1	Articulated vehicle 3,500 – 16,000 kg		

Figure 16: Number of driving licences issued

Source: eNatis

Table 12 and figure 16 depict that the most increase in the number of issued licences were in Category C1, B and C, with percentages of 27.89%, 17.34% and 13.35%, respectively. Category EC1 recorded a decrease of 0.65%.

The number and percentage (%) of driving licences issued per category at the end of December 2013 is reflected in Table 13 below:

Table 13: Number and % of Driving Licences Issued per Category

Category	Description	Number	%
A	Motorcycle < 125 cub.cm	446,772	4.20
A1	Motorcycle > 125 cub.cm	123,455	1.16
B	Motor vehicle < 3,5000 kg	2,301,907	21.62
C	Articulated motor vehicle <16,000 kg	19,067	0.18
C1	Motor vehicle 3,500 - 16,000 kg	2,586,914	24.30
EB	Articulated vehicle 3,500 - 16,000 kg	3,638,577	34.18
EC	Motorvehicle > 16,000 kg	929,236	8.73
EC1	Articulated vehicle > 16,000 kg	599,118	5.63
Total		10,645,046	100

Source: eNatis

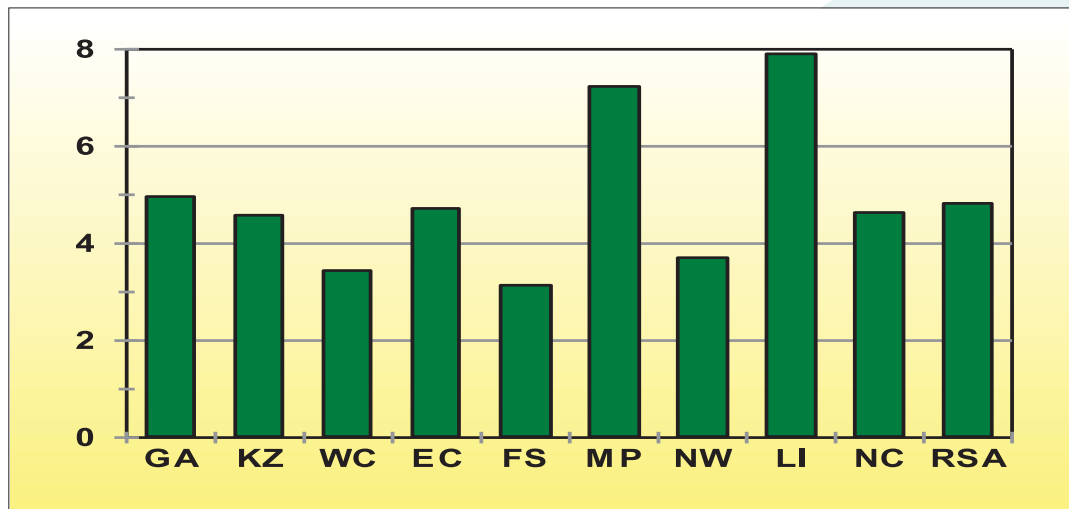
Provincial information in this regard is given in Table 14 and the percentage change with regard to all licences issued per province is reflected in figure 17.

Table 14 : Number of Driving Licences Issued per Province

Year	GA	KZ	WC	EC	FS	MP	NW	LI	NC	RSA
Dec 2012	3,591,029	1,609,119	1,640,888	739,954	542,029	665,598	486,976	686,745	192,827	10,155,165
Dec 2013	3,769,370	1,682,844	1,697,300	774,905	559,035	713,739	505,029	741,051	201,773	10,645,046
Change	347,702	144,136	116,143	67,983	33,371	93,609	35,801	107,264	16,585	489,881
% Change	10.16	9.37	7.35	9.62	6.35	15.10	7.63	16.92	8.96	4.82

Source: eNatis

Figure 17: % Change in Driving Licences Issued



Source: eNatis

3.2.2 Number of Driving Licence Cards Expired

The information in Table 15 below shows that on 31 December 2013 there were a total of 1,523,861 expired driving licence cards recorded on the National Traffic Information System (eNaTIS).

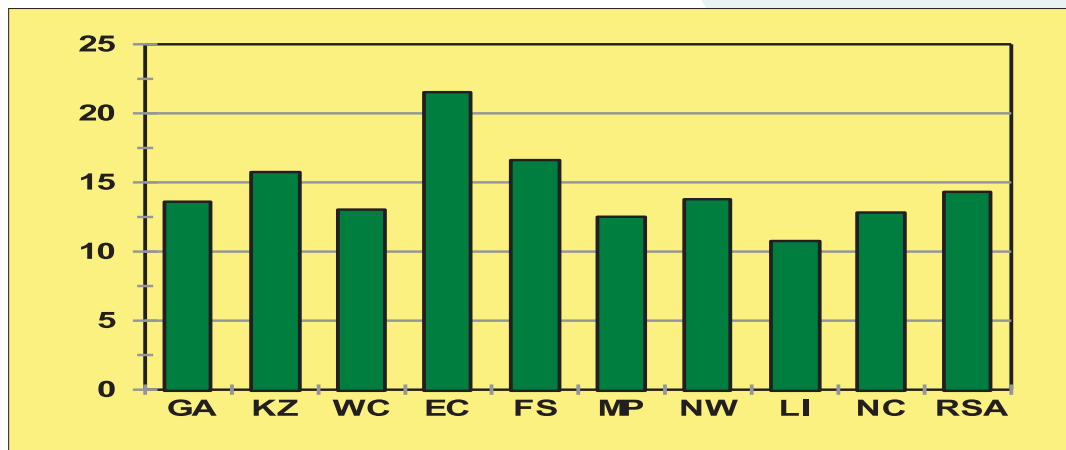
This figure represents 14.32% of all driving licences issued. This information is also reflected in figure 18.

Table 15: Number of Driving Licence Cards Issued and Expired per Province

Category	GA	KZ	WC	EC	FS	MP	NW	LI	NC	RSA
On system	3,769,370	1,682,844	1,697,300	774,905	559,035	713,739	505,029	741,051	201,773	10,645,046
Not expired	3,256,254	1,417,638	1,476,003	608,032	466,178	624,438	435,408	661,350	175,884	9,121,185
Expired	513,116	265,206	221,297	166,873	92,857	89,301	69,621	79,701	25,889	1,523,861
% Expired	13.61	15.76	13.04	21.53	16.61	12.51	13.79	10.76	12.83	14.32

Source: eNatis

Figure 18: Percentage of expired driving licence cards per province



Source: eNatis

3.3 Professional Driving Permits Issued and Expired

3.3.1 Number of Professional Driving Permits Issued

The number of Professional Driving Permits (PrDPs) issued increased by 32 639 (347%) from 939 506 on 31 December 2012 to 972 145 on 31 December 2013. Detail on the number of PrDPs issued per category is given in Table 16 and graphically reflected in the figure 19.

Table 16: Number of PrDPs Issued

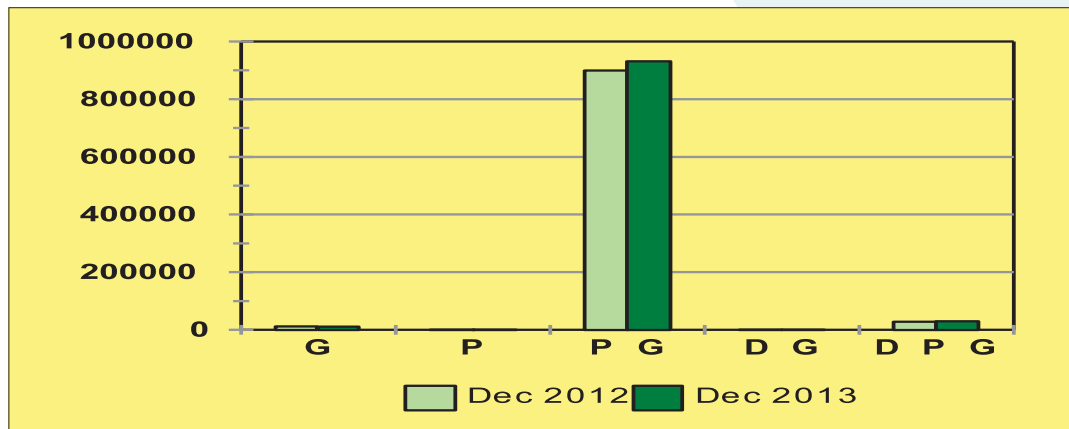
Category	Dec 2012	Dec 2013	Change	% Change
G	11,874	11,291	-379	-3.19
P	24			
P G	899,584	931,029	88,713	9.86
D G	153	158	37	24.18
D P G	27,871	29,667	4,596	16.49
Total	939,506	972,145	32,639	3.47

Source: eNatis

Professional Driving Permits (PrDPs)

- G: Goods
- P: Passengers
- D: Dangerous goods

Figure 19: Number of PrDPs issued



Source: eNatis

Provincial information in this regard is given in Table 17 below:

Table 17: Number of Professional Driving Permits (PrDPs) Issued per Province

Year	GA	KZ	WC	EC	FS	MP	NW	LI	NC	RSA
Dec 2012	259,407	158,062	131,506	71,757	60,052	88,561	50,600	96,756	22,805	939,506
Dec 2013	268,399	163,560	135,054	75,260	61,941	92,002	52,029	100,200	23,700	972,145
Change	25,336	15,722	11,245	7,029	6,474	10,147	4,494	9,271	2,519	32,639
% Change	10.42	10.63	9.08	10.30	11.67	12.40	9.45	10.20	11.89	3.47

Source: eNatis

3.3.2 Number of Expired PrDPs

The information in Table 18 below shows that on 31 December 2013 there were a total of 296,532 expired Professional Driving Permits (PrDPs) recorded on the NaTIS.

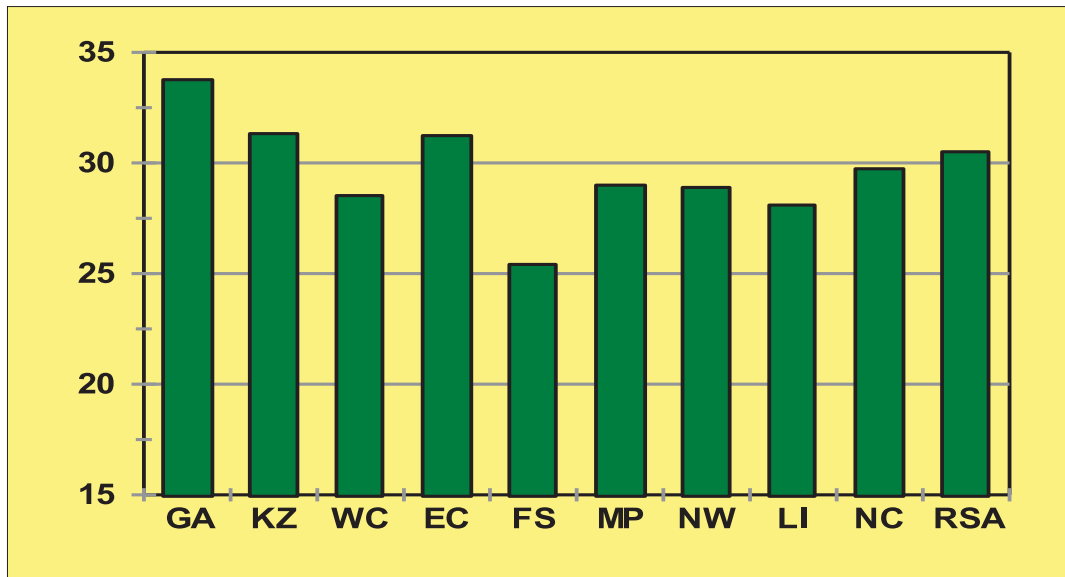
This figure represents 30.50% of all PrDPs issued. This information is also reflected in Figure 20.

Table 18: Number of Professional Driving Permits (PrDPs) Issued and Expired per Province

Category	GA	KZ	WC	EC	FS	MP	NW	LI	NC	RSA
On system	268,399	163,560	135,054	75,260	61,941	92,002	52,029	100,200	23,700	972,145
Not expired	177,785	112,325	96,529	51,754	46,196	65,327	36,999	72,047	16,651	675,613
Expired	90,614	51,235	38,525	23,506	15,745	26,675	15,030	28,153	7,049	296,532
% Expired	33.76	31.32	28.53	31.23	25.42	28.99	28.89	28.10	29.74	30.50

Source: eNatis

Figure 20: Percentage of expired professional driving permits



Source: eNatis

The provinces that recorded the highest increase of expired PrDPs are Gauteng, with a 33.76%, closely followed by KwaZulu-Natal and Eastern Cape, with 31.32% and 31.23%, respectively.

4. Fatal Road Traffic Crashes and Fatalities

4.1 Number of Fatal Crashes

Over the 12 months period from 1 January 2013 to 31 December 2013 the number of fatal crashes decreased by 807 (7.35%) from 10,977 crashes over the same period the previous year (2012) to 10,170 in 2013. Provincial detail in this regard is given in Table 19 below:

Table 19: Number of Fatal Crashes per Province over 12 Month Period

Year	GA	KZ	WC	EC	FS	MP	NW	LI	NC	RSA
2012	2,037	2,214	1,004	1,206	782	1,149	910	1,324	351	10,977
2013	2,009	2,190	928	1,164	476	1,158	815	1,129	301	10,170
change	-28	-24	-76	-42	-306	9	-95	-195	-50	-807
% change	-1.37	-1.08	-7.57	-3.48	-39.13	0.78	-10.44	-14.73	-14.25	-7.35

Source: RTMC

With the exception of Mpumalanga, decreases in the number of fatal crashes were recorded in all provinces.

On a provincial percentage basis the biggest decreases over the 12 month period from 1 January 2013 to 31 December 2013 were recorded as follows:

- Free State: a decrease of 306 (39.13%) from 782 to 476;
- Limpopo : a decrease of 195 (14.73%) from 1 324 to 1 129;
- Northern Cape: a decrease of 50 (14.25%) from 351 to 301; and
- North West: a decrease of 95 (10.44%) from 910 to 815.

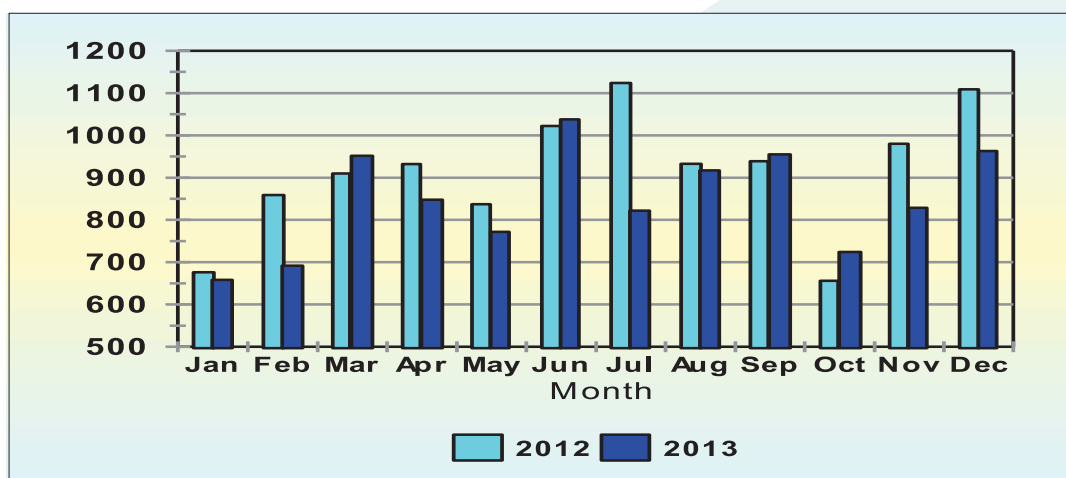
In Gauteng the number of fatal crashes decreased by 28 (1.37%) from 2 037 during 2012 to 2 009 during 2013. In Mpumalanga the number of fatal crashes increased by 9 (0.78%) from 1 149 to 1 158.

The monthly number of fatal crashes over the two comparative 2 year periods is graphically reflected in figure 21 below.

Table 20: Monthly Number of Fatal Crashes

Month	2012	2013	Change	% change
Jan	676	658	-18	-2.66
Feb	859	692	-167	-19.44
Mar	910	952	42	4.62
Apr	932	848	-84	-9.01
May	837	772	-65	-7.77
Jun	1,022	1,038	16	1.57
Jul	1,124	822	-302	-26.87
Aug	933	917	-16	-1.71
Sep	939	955	16	1.70
Oct	656	724	68	10.37
Nov	980	829	-151	-15.41
Dec	1,109	963	-146	-13.17
Total	10,977	10,170	-807	-7.35

Source: RTMC

Figure 21: No. of Fatal Crashes per Month

Source: RTMC

The number of fatal crashes per month per province is given in the table attached under **Annexure D**.

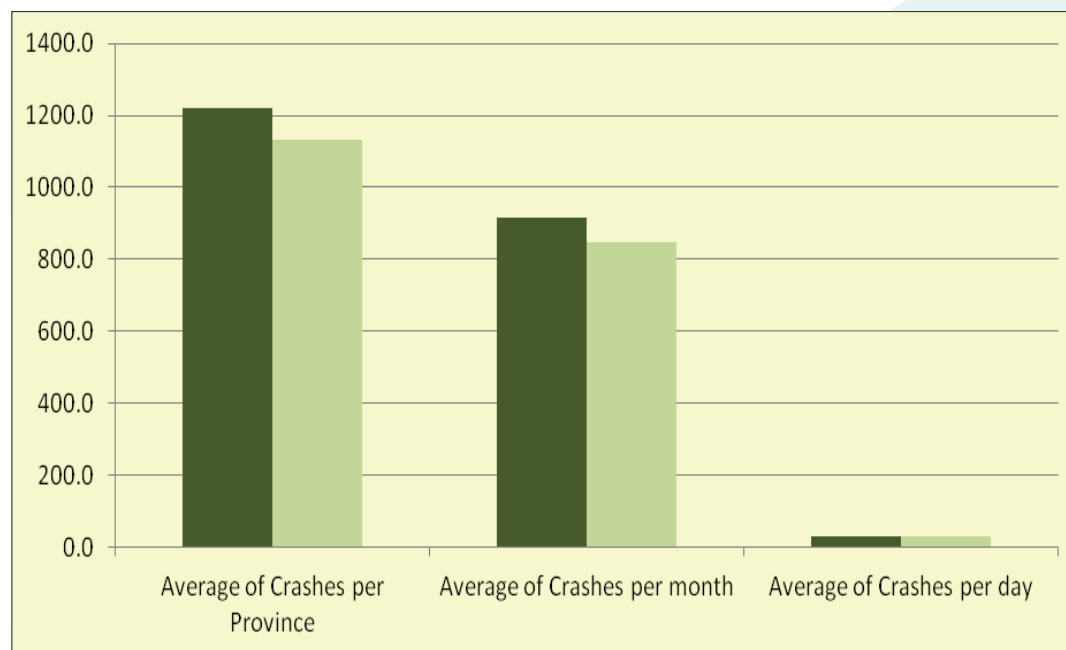
Table 21 and figure 22 below shows the different averages of fatal crashes per province, per month and per day. The information shows that on average more than 1 219.7 fatal crashes were recorded per province during 2012 and 1 130 during 2013, more than 847.5 fatal crashes per month and more than 27.9 per day.

Table 21: Averages of Fatal Crashes

Year	Total Number of Fatal Crashes per year	Average of Crashes per Province	Average of Crashes per month	Average of Crashes per day
2012	10977	1219.7	914.8	30.1
2013	10170	1130.0	847.5	27.9

Source: RTMC

Figure 22: Fatal crashes averages



Source: RTMC

4.2 NUMBER OF FATALITIES

Over the 12month period from 1 January 2013 to 31 December 2013 the number of fatalities decreased by 1 684 (12.45%) from 13 528 fatalities over the same period the previous year to 11 844. Provincial detail in this regard is given in Table 22 below:

Table 22 : Number of Fatalities per Province over 12 Month Period

Year	GA	KZ	WC	EC	FS	MP	NW	LI	NC	RSA
2012	2,404	2,579	1,173	1,587	1,041	1,479	1,156	1,689	420	13,528
2013	2,027	2,627	1,065	1,403	541	1,429	994	1,414	344	11,844
change	-378	48	-108	-184	-500	-50	-161	-275	-76	-1,684
% change	-15.70	1.85	-9.17	-11.61	-48.06	-3.38	-13.96	-16.29	-18.02	-12.45

Source: RTMC

With the exception of KwaZulu-Natal all the provinces recorded decrease in fatalities. On a provincial percentage basis the biggest decreases were recorded as follows:

- Free State: decrease of 500 (48.06%);
- Northern Cape: decrease of 76 (18.02%); and
- Limpopo: decrease of 275 (16.29%).

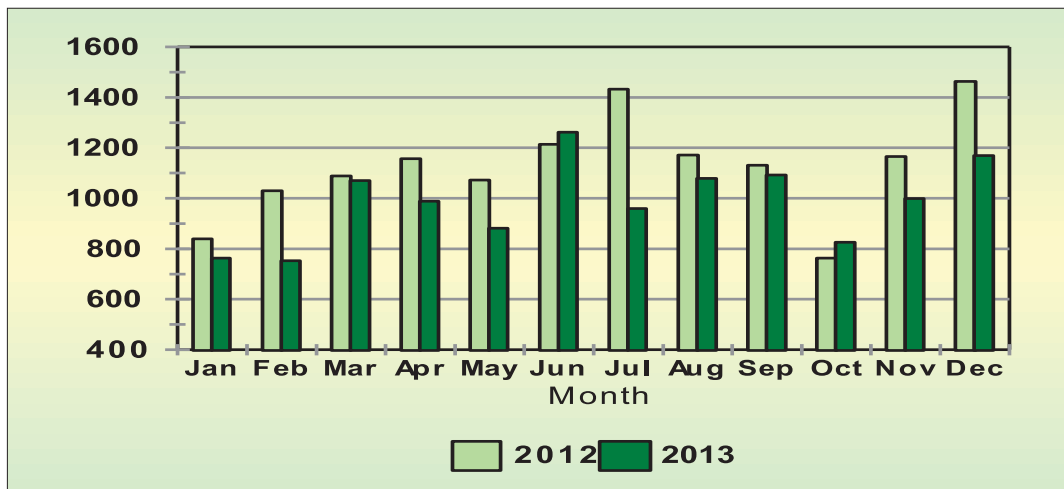
In Gauteng the number of fatalities decreased by 378 (15.70%) from 2 404 to 2 027. KwaZuluNatal had the only increase in the number of fatalities of 48 (1.85%) from 2 579 to 2 627

The national monthly number of fatalities over the 12-month period is graphically reflected in figure 23.

Table 23: Monthly Number of Fatalities

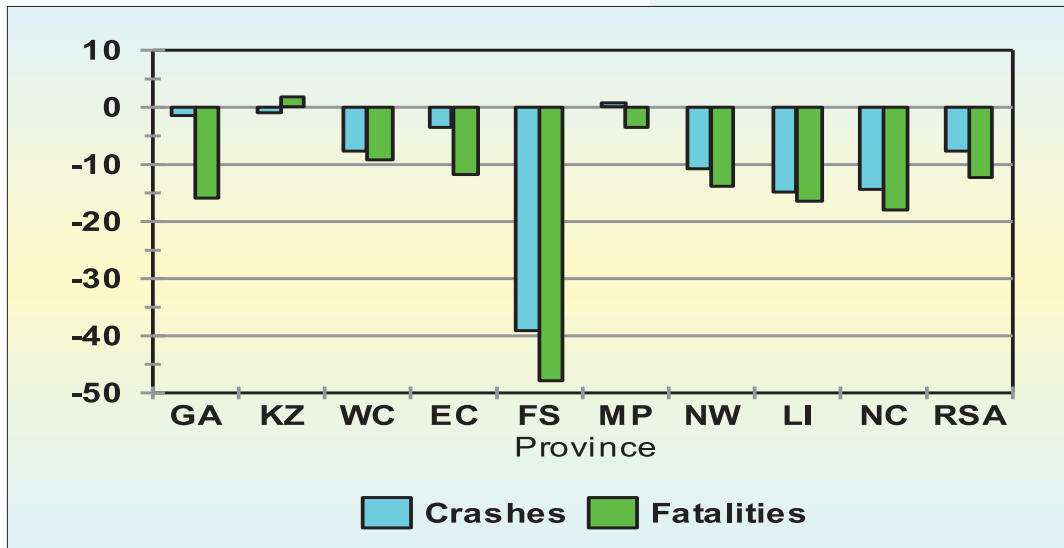
Month	2012	2013	Change	% change
Jan	839	763	-76	-9.08
Feb	1,030	753	- 277	-26.93
Mar	1,089	1,070	-19	-1.71
Apr	1,157	988	-169	-14.60
May	1,072	882	-190	-17.75
Jun	1,214	1,262	48	3.92
Jul	1,433	960	-473	-33.01
Aug	1,171	1,079	-92	-7.86
Sep	1,131	1,092	-38	-3.38
Oct	763	826	63	8.23
Nov	1,166	999	-167	-14.30
Dec	1,463	1,170	-293	-20.04
Total	13,528	11,844	-1,684	-12.45

Source: RTMC

Figure 23: No. of Fatalities per Month

Source: RTMC

The percentage change in the number of fatal crashes and fatalities over the 12 period from 1 January to 31 December for 2013 in comparison with 2012 reflected in the graph below.

Figure 24: Percentage Change in Crashes & Fatalities

Source: RTMC

The number of fatalities per month per province is given in the table attached under **Annexure E**

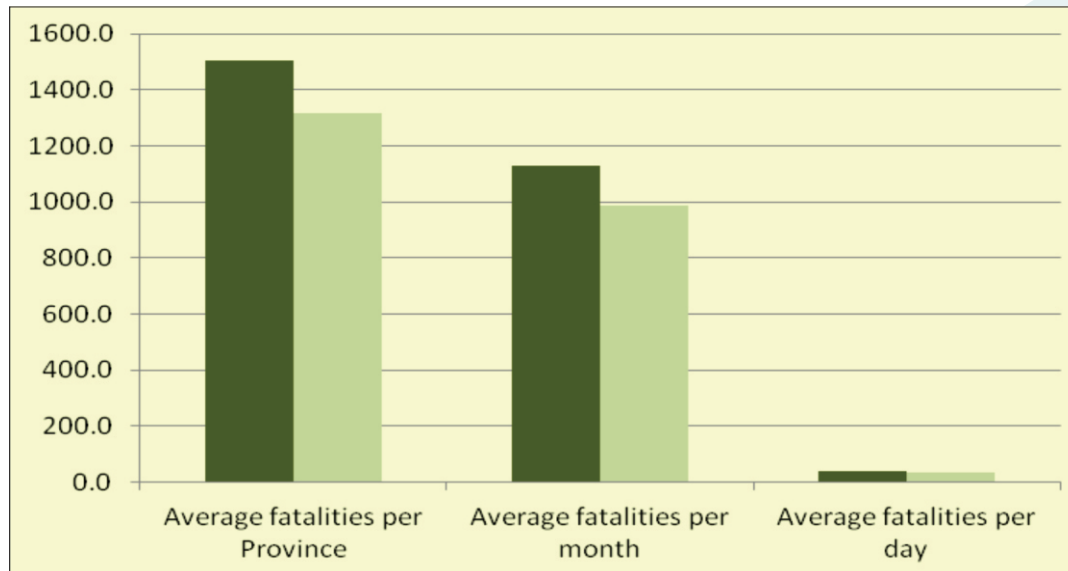
Table 24 and figure 25 show the different averages of fatalities per province, per month and per day. The information shows that on average more than 1 503.1 fatalities were recorded per province during 2012 and 1 316 during 2013, more than 987 fatalities per month and more than 32.4 per day.

Table 24: Fatalities averages

Year	Total Number of Fatalities per year	Average fatalities per Province	Average fatalities per month	Average fatalities per day
2012	13,528	1503.1	1127.3	37.1
2013	11,844	1316.0	987.0	32.4

Source: RTMC

Figure 25: Fatalities averages



Source: RTMC

4.3 Number of Fatalities per Road User Group

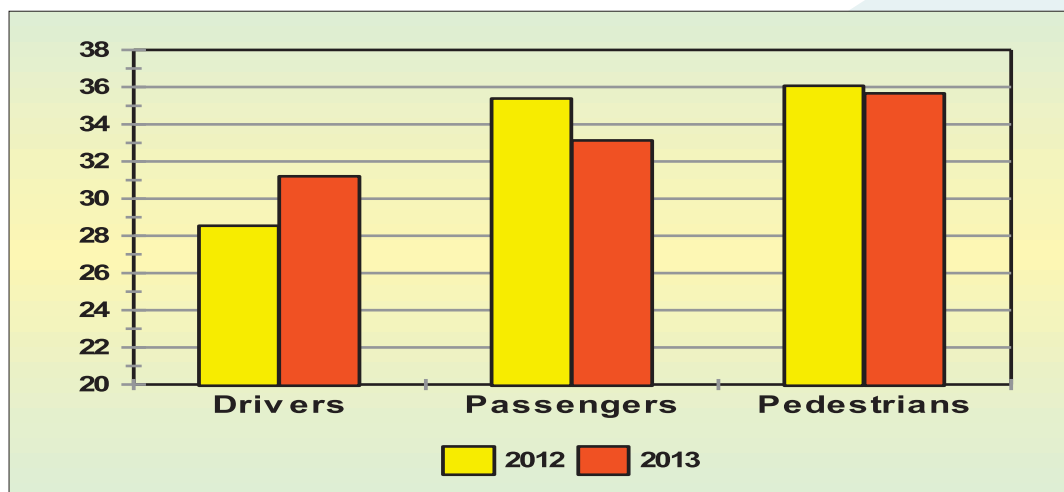
The information in Table 25 below shows that driver fatalities decreased by 166 (4.30%) from 3 861 to 3 695; passenger fatalities decreased by 863 (18.03%) from 4 786 to 3 924 and pedestrian fatalities decreased by 655 (13.42%) from 4 880 to 4 225 over the 12 month period from 1 January 2013 to 31 December 2013.

Table 25: No. of Fatalities per Road User Group

User Group	2012	2013	Change	% Change
Drivers	3,861	3,695	-166	-4.30
Passengers	4,787	3,924	-863	-18.03
Pedestrians	4,880	4,225	-655	-13.42
Total	13,528	11,844	-1,684	-12.45

Source: RTMC

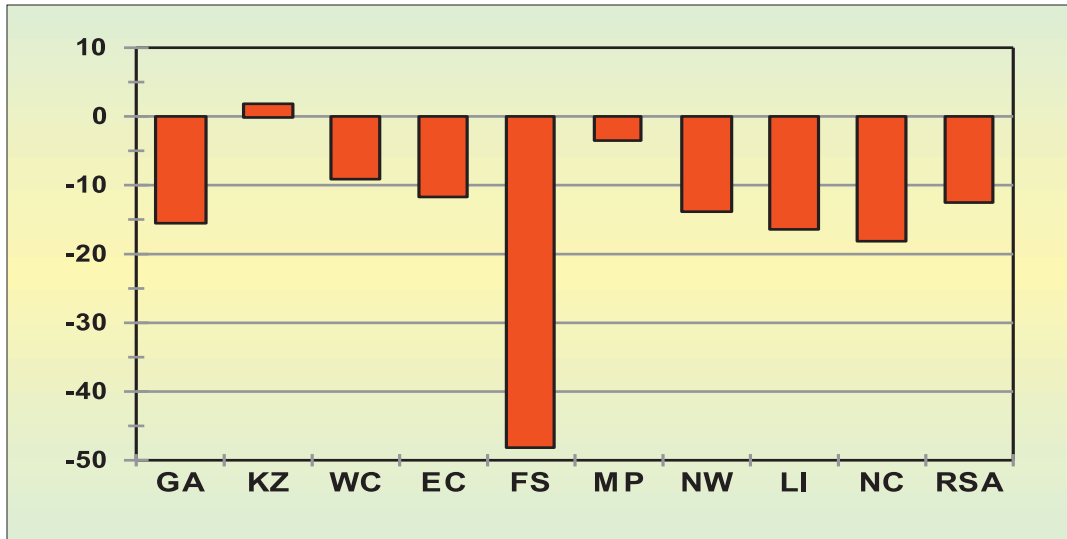
Figure 26: % Fatalities per Road User Group



Source: RTMC

The percentage change in all fatalities per province is shown in figure 27.

Figure 27: % Change in All Fatalities



Source: RTMC

The number of fatalities per road user group per province for the two respective 12 month periods is shown in Table 26 below:

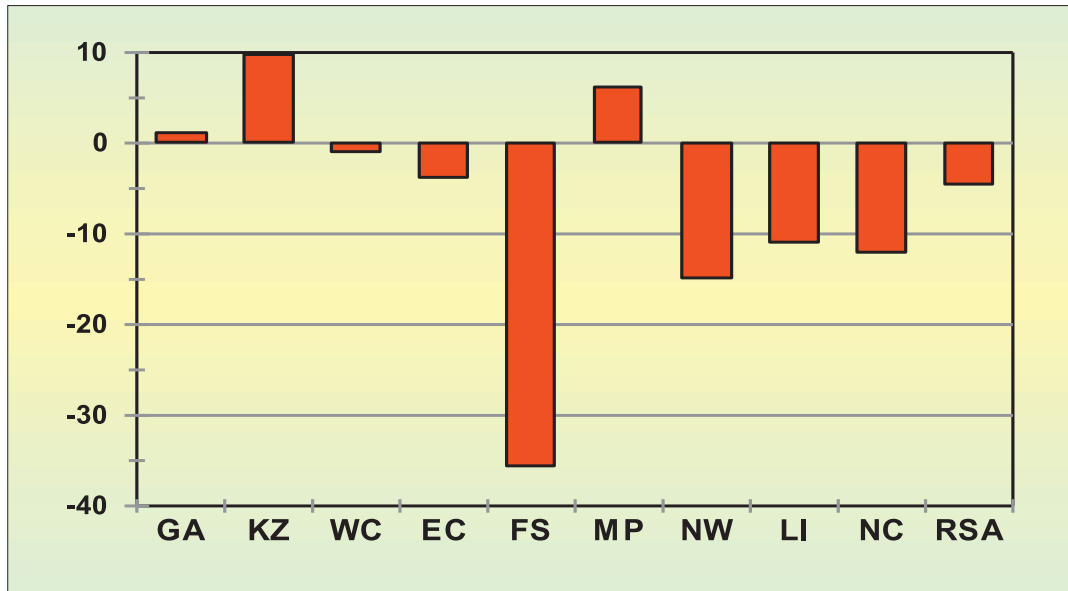
Table 26: Number of Fatalities per Road User Group over 12 Month Period

Year	User Group	GA	KZ	WC	EC	FS	MP	NW	LI	NC	RSA
2012	Drivers	662	628	327	415	328	472	423	472	134	3,861
	Passengers	627	695	357	647	493	602	426	752	188	4,787
	Pedestrians	1,115	1,256	489	525	220	405	307	465	98	4,880
	Total	2,404	2,579	1,173	1,587	1,041	1,479	1,156	1,689	420	13,528
2013	Drivers	670	690	325	400	211	501	361	421	117	3,695
	Passengers	465	830	273	479	191	564	348	621	154	3,924
	Pedestrians	892	1,107	468	524	138	363	286	372	73	4,225
	Total	2,027	2,627	1,065	1,403	541	1,429	994	1,414	344	11,844
Change	Drivers	8	61	-3	-16	-117	29	-62	-51	-16	-166
	Passengers	-162	135	-84	-168	-302	-37	-79	-131	-35	-863
	Pedestrians	-223	-149	-21	-1	-82	-42	-21	-93	-25	-655
	Total	-378	48	-108	-184	-500	-50	-161	-275	-76	-1,684
% Change	Drivers	1.15	9.78	-0.86	-3.74	-35.60	6.19	-14.70	-10.75	-12.17	-4.30
	Passengers	-25.88	19.39	-23.55	-25.97	-61.22	-6.20	-18.43	-17.43	-18.48	-18.03
	Pedestrians	-19.99	-11.83	-4.26	-0.15	-37.16	-10.32	-6.74	-20.05	-25.11	-13.42
	Total	-15.70	1.85	-9.17	-11.61	-48.06	-3.38	-13.96	-16.29	-18.02	-12.45

Source: RTMC

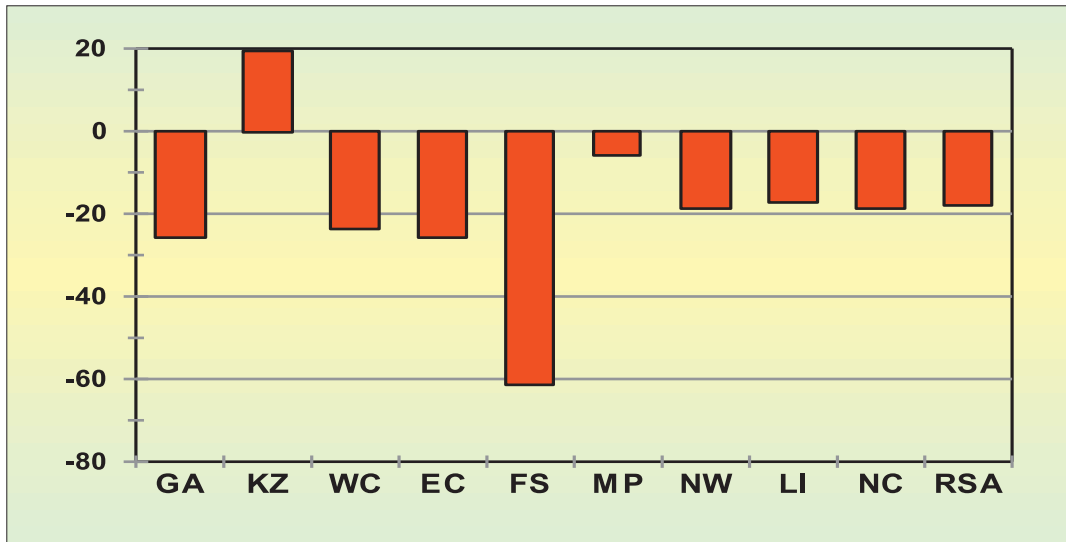
The percentage (%) changes in fatalities per specific road user group from 2012 to 2013 per province are also reflected in figure 28 below:

Figure 28: Percentage Change in Driver Fatalities



Source: RTMC

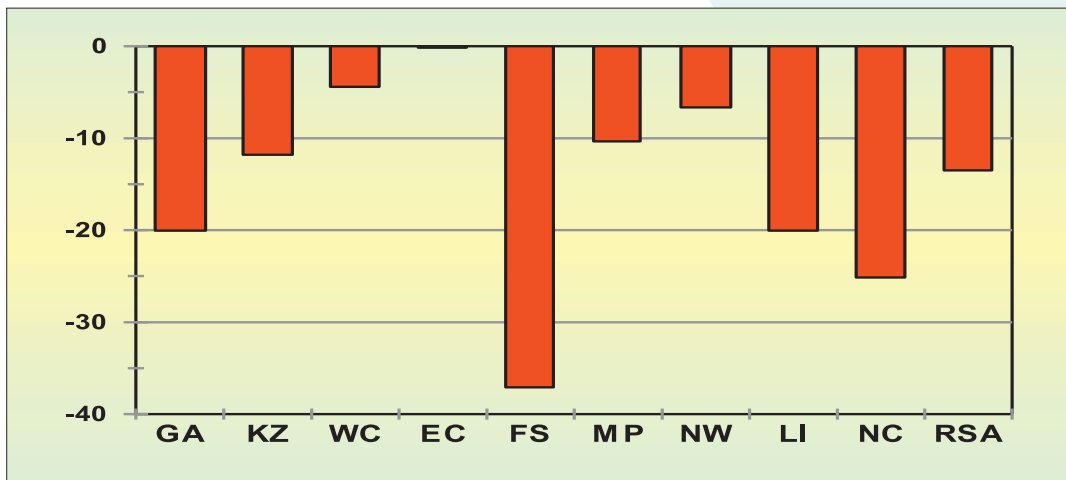
Figure 29: % Change in Passenger Fatalities



Source: RTMC

The information in figure 29 shows that the number of passenger fatalities recorded an increase for KwaZulu-Natal with an increase of 19.39%. All other provinces showed a decrease in the passenger fatalities with Free State being the province with the biggest decrease recorded with 61.22%, followed by Eastern Cape, Gauteng and Western Cape with 25.97%, 25.88% and 23.55% respectively

Figure 30: % Change in Pedestrian Fatalities

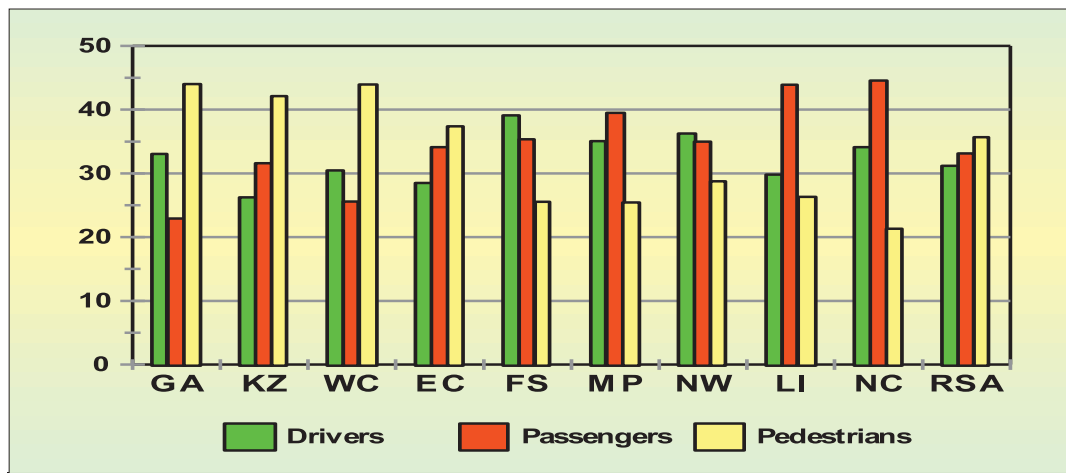


Source: RTMC

The information in figure 30 shows that, on a percentage basis, all the provinces showed a decrease in the number of pedestrian fatalities. Free State, Northern Cape, Limpopo and Gauteng had the biggest decrease of 37.16%, 25.11%, 20.05% and 19.99% respectively.

The combined percentages of road user group fatalities (drivers, passengers and pedestrians) per province for 2013 is also reflected in figure 31 below.

Figure 31: % Fatalities per Road User Group



Source: RTMC

The information in figure 31 shows that in Gauteng, KwaZulu-Natal, Western Cape and Eastern Cape the main fatality groups were pedestrians – on average 41.83% of all fatalities. In Free State and North West Drivers were the main fatality group on average 37.67%. Mpumalanga, Limpopo and Northern Cape the main fatality groups were passengers – on average 42.66% of all fatalities.

More detail on the number of fatalities per road user group per month per province for 2012 and 2013 is given in the table attached under **Annexure F**.

4.4 Severity of Fatal Crashes

The severity of fatal crashes decreased by 0.07 (5.50%) from 1.23 during 2012 to 1.16 during 2013. The individual provincial severity rates are shown in Table 27 below:

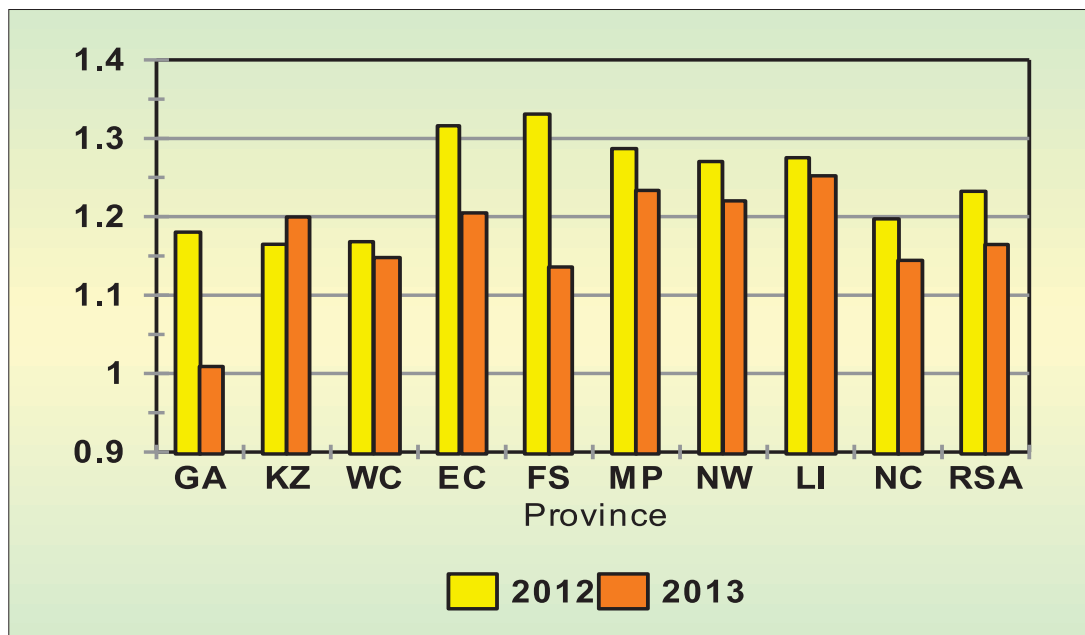
Table 27: Severity of Crashes per Province (Av no. of fatalities/crash)

Year	GA	KZ	WC	EC	FS	MP	NW	LI	NC	RSA
2012	1.18	1.16	1.17	1.32	1.33	1.29	1.27	1.28	1.20	1.23
2013	1.01	1.20	1.15	1.21	1.14	1.23	1.22	1.25	1.14	1.16
change	-0.17	0.03	-0.02	-0.11	-0.20	-0.05	-0.05	-0.02	-0.05	-0.07
% change	-14.53	2.96	-1.73	-8.42	-14.68	-4.13	-3.93	-1.83	-4.40	-5.50

Source: RTMC

The information in the table above shows that the severity rate increased for KwaZulu-Natal by 0.03 (2.96%) from 1.16 to 1.20. All other provinces recorded a decrease in the severity rate having Free State and Gauteng with the highest decreases of 14.68% and 14.53% respectively. The provincial rates for the two comparative years in this regard are also reflected in figure 32.

Figure 32: Crash Severity (Persons killed/crash)



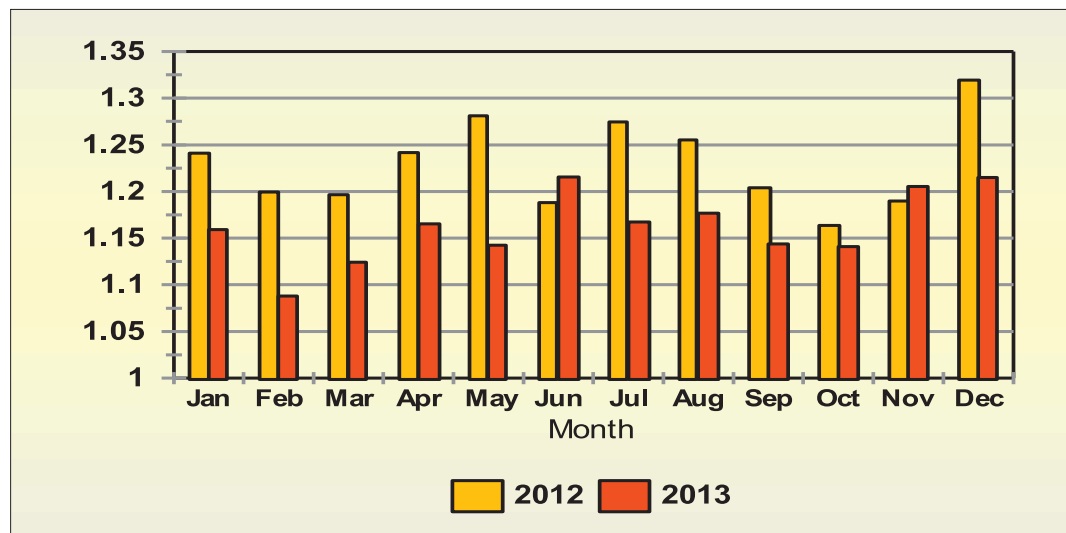
Source: RTMC

The severity rate per month is given in Table 28 and also reflected in figure 33.

Table 28: Monthly Crash Severity

Month	2012	2013	Change	% change
Jan	1.241	1.159	-0.082	-6.60
Feb	1.199	1.088	-0.111	-9.29
Mar	1.196	1.124	-0.072	-6.04
Apr	1.242	1.165	-0.076	-6.14
May	1.281	1.142	-0.139	-10.83
Jun	1.188	1.216	0.028	2.32
Jul	1.274	1.167	-0.107	-8.40
Aug	1.255	1.177	-0.078	-6.25
Sep	1.204	1.144	-0.060	-5.00
Oct	1.164	1.141	-0.022	-1.93
Nov	1.190	1.205	0.016	1.31
Dec	1.319	1.215	-0.104	-7.91
Total	1.232	1.165	-0.068	-5.50

Source: RTMC

Figure 33: Severity of Crashes per Month

Source: RTMC

The figure above shows that the two months with exceptionally high severity rates were June and Dec 2013 with rates of 1.216 and 1.215 respectively. The biggest rate increase was recorded in June 2013 with an increase of 2.32%, and November with an increase of 1.31%.

These high rates could be attributed to a large number of high occupancy vehicles, buses and minibuses, involved in fatal crashes.

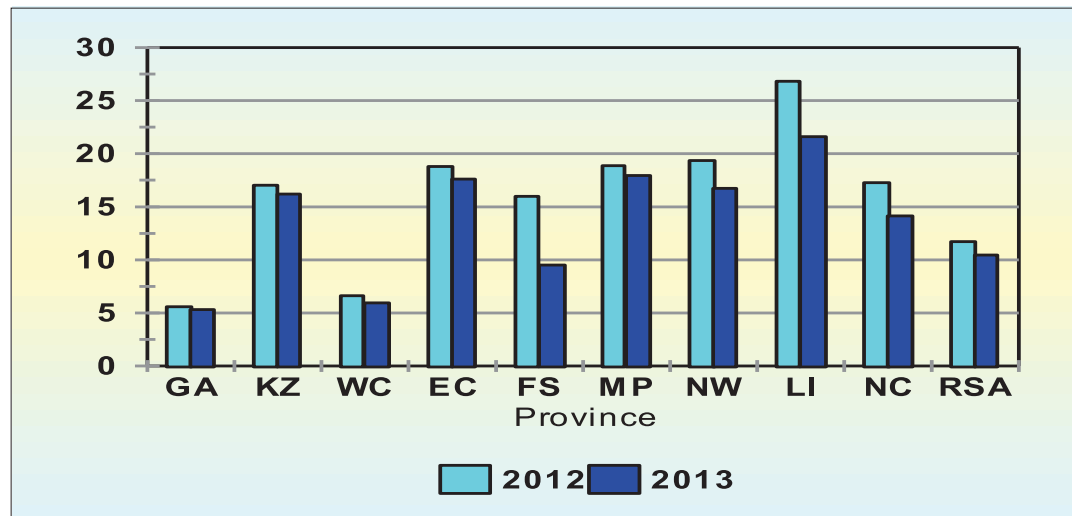
4.5 Crash and Fatality Rates and Trends per 10,000 Vehicles

The number of fatal crashes per 10 000 registered motorised vehicles decreased by 1.26 (10.75%) from 11.71 during 2012 to 10.45 during 2013. Provincial detail in this regard is given in Table 29 and graphically reflected in figure 34.

Table 29: Number of Fatal Crashes per 10,000 Motorised Vehicles

Year	GA	KZ	WC	EC	FS	MP	NW	LI	NC	RSA
2012	5.58	17.01	6.62	18.80	15.98	18.87	19.35	26.83	17.26	11.71
2013	5.30	16.21	5.94	17.62	9.50	17.96	16.75	21.61	14.15	10.45
change	-0.28	-0.80	-0.69	-1.18	-6.48	-0.92	-2.60	-5.22	-3.12	-1.26
% change	-4.96	-4.71	-10.39	-6.29	-40.57	-4.87	-13.46	-19.45	-18.06	-10.75

Source: RTMC

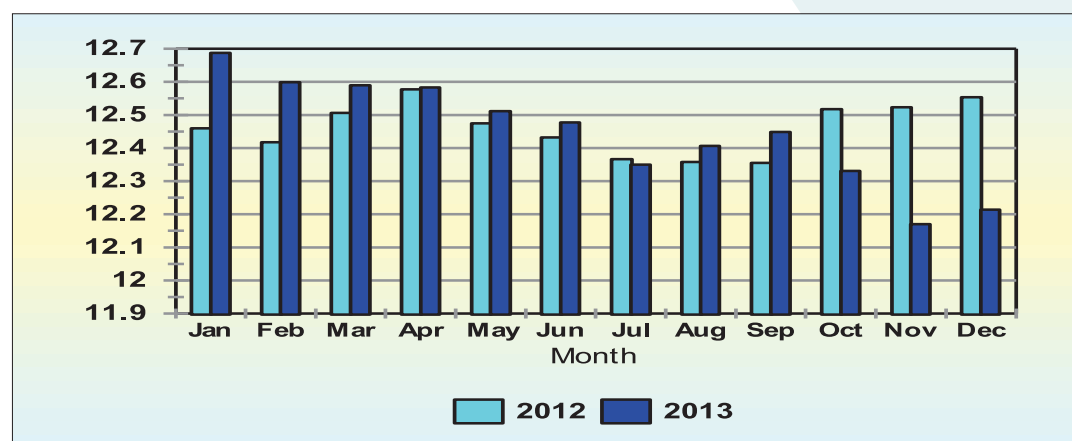
Figure 34: Number of Crashes per 10,000 Vehicles

Source: RTMC

All provinces recorded a decrease in the number of crashes per 10 000 vehicles. On a provincial percentage basis the biggest decreases were recorded as follows:

- Free State : decrease of 6.48 (40.57%) from 15.98 to a rate of 9.50;
- Limpopo : decrease of 5.22 (19.45%) from 26.83 to a rate of 21.61; and
- Northern Cape: decrease of 3.12 (18.06%) from 17.26 to a rate of 14.15.

The number of fatal crashes per 10 000 registered motorised vehicles per month for the two respective years 2012 and 2013 are shown in figure 35.

Figure 35: Number of Fatal Crashes per Month

Source: RTMC

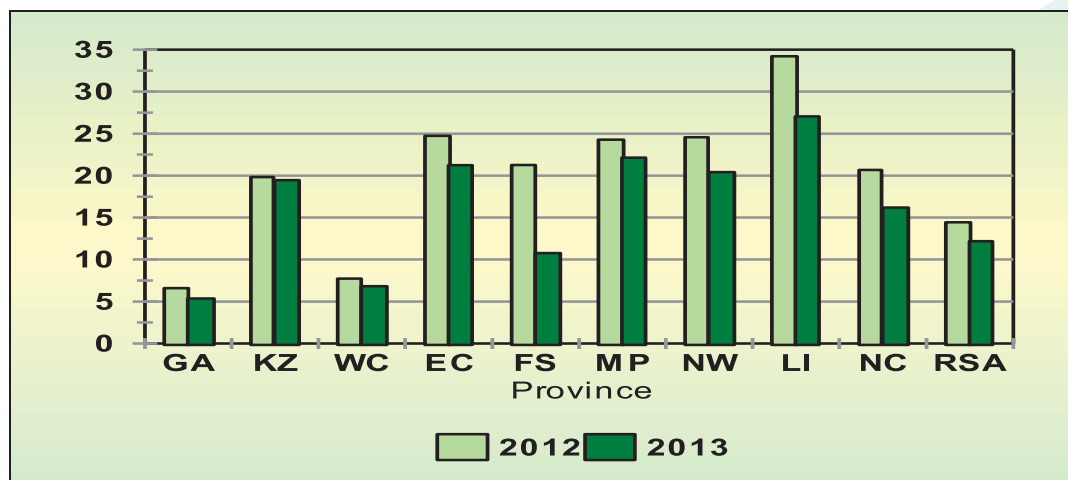
The number of fatalities per 10 000 registered motorised vehicles decreased by 2.26 (15.66%) from 14.43 during 2012 to 12.17 during 2013. Provincial detail in this regard is given in Table 30 and graphically reflected in figure 36.

Table 30: Number of Fatalities per 10,000 Motorised Vehicles

Year	GA	KZ	WC	EC	FS	MP	NW	LI	NC	RSA
2012	6.59	19.82	7.74	24.74	21.27	24.29	24.58	34.21	20.67	14.43
2013	5.35	19.45	6.81	21.23	10.78	22.15	20.43	27.06	16.19	12.17
change	-1.24	-0.37	-0.92	-3.51	-10.48	-2.14	-4.14	-7.16	-4.48	-2.26
% change	-18.77	-1.89	-11.95	-14.18	-49.30	-8.79	-16.86	-20.92	-21.67	-15.66

Source: RTMC

Figure 36: No. of Fatalities per 10,000 Vehicles



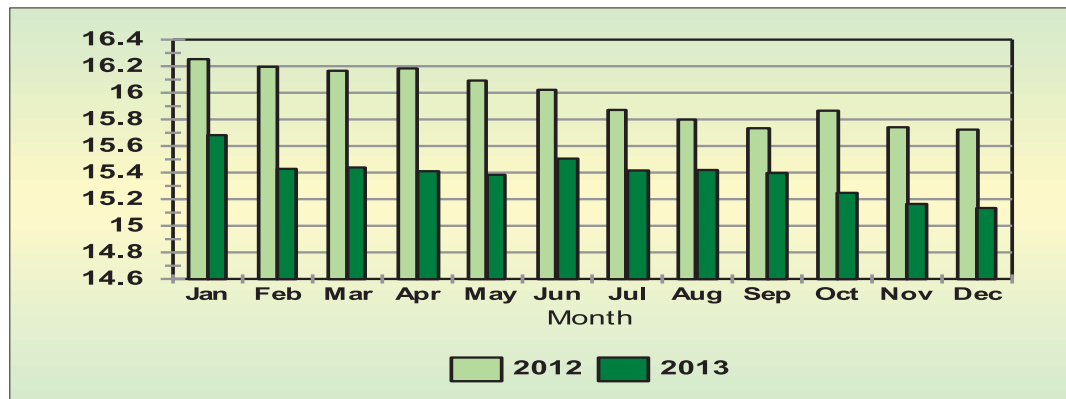
Source: RTMC

All provinces recorded decreases in the number of fatalities per 10,000 vehicles. On a provincial percentage basis the biggest decreases were recorded as follows:

- Free State: decrease of 10.48 (49.30%) from 21.27 to a rate of 10.78;
- Northern Cape: decrease of 4.48 (21.67%) from 20.67 to a rate of 16.19; and
- Limpopo: decrease of 7.16 (20.92%) from 34.21 to a rate of 27.06.

The number of fatalities per 10 000 registered motorised vehicles per month for the two 12-month periods is shown in the figure 37.

Figure 37: No. of Fatalities per Month



Source: RTMC

4.6 Number of Fatalities per 100,000 Human Population

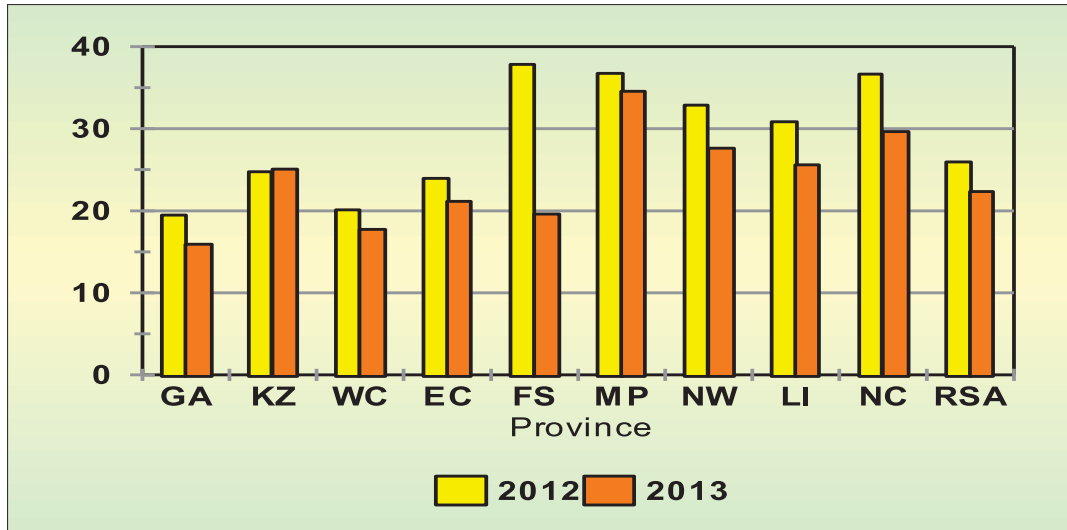
The number of fatalities per 100 000 human population decreased by 3.61(13.90%) from 25.94 during 2012 to 22.34 during 2013. Provincial detail in this regard is given in Table 31 and graphically reflected in figure 38 below:

Table 31: No. of Fatalities per 100,000 Human Population

Year	GA	KZ	WC	EC	FS	MP	NW	LI	NC	RSA
2012	19.47	24.74	20.10	23.96	37.84	36.73	32.89	30.84	36.64	25.94
2013	15.94	25.08	17.71	21.13	19.61	34.56	27.61	25.59	29.64	22.34
change	-3.54	0.34	-2.39	-2.83	-18.23	-2.17	-5.28	-5.25	-7.00	-3.61
% change	-18.16	1.37	-11.87	-11.80	-48.18	-5.92	-16.04	-17.04	-19.10	-13.90

Source: RTMC

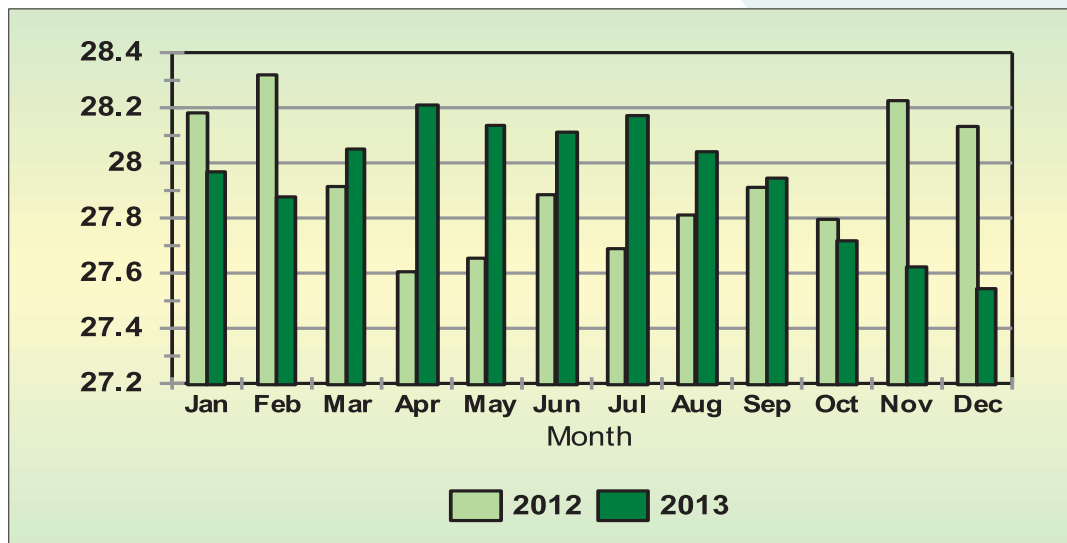
Figure 38: Fatalities per 100,000 Human Population



Source: RTMC

With the exception of KwaZulu-Natal, all provinces recorded decreases in the number of fatalities per 100 000 human population. On a provincial percentage basis the biggest increases was for Free State with an increase of 18.23 (48.18%) from 37.84 to a rate of 19.61. KwaZulu-Natal recorded an increase of 0.34 (1.37%) from 24.74 to a rate of 25.08.

Figure 39: Monthly Fatalities per 100,000 Population



Source: RTMC

5. Fatalities Day-of-Week & Time-of-Day

5.1 Crashes per Day of Week

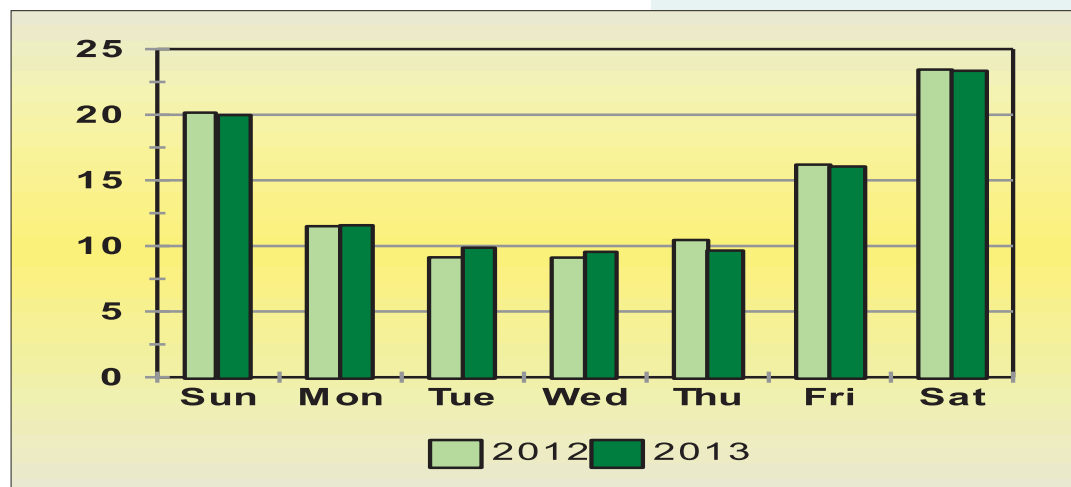
The percentage of fatal crashes per day of the week per province during 2013 is given in Table 32 and graphically reflected in figure 40.

Table 32: Percentage of Fatal Crashes per Day-of-Week

Province	Sun	Mon	Tue	Wed	Thu	Fri	Sat
Gauteng	19.60	12.43	11.57	10.12	9.32	15.96	21.00
Kwa-Zulu Natal	18.21	11.30	9.44	11.10	10.13	16.07	23.76
Western Cape	20.69	12.47	10.15	8.23	9.64	13.75	25.06
Eastern Cape	21.23	11.18	9.72	9.08	10.21	16.53	22.04
Free State	18.06	13.21	9.16	10.51	9.97	16.17	22.91
Mpumalanga	22.93	10.17	8.87	9.57	8.98	16.67	22.81
North West	22.25	11.38	9.18	7.12	10.09	15.52	24.45
Limpopo	17.49	10.28	7.34	10.28	8.14	17.49	28.97
Northern Cape	17.49	11.21	12.56	8.07	13.90	17.94	18.83
Total	19.97	11.57	9.86	9.56	9.64	16.05	23.35

Source: RTMC

Figure 40: Fatal Crashes per Day of Week



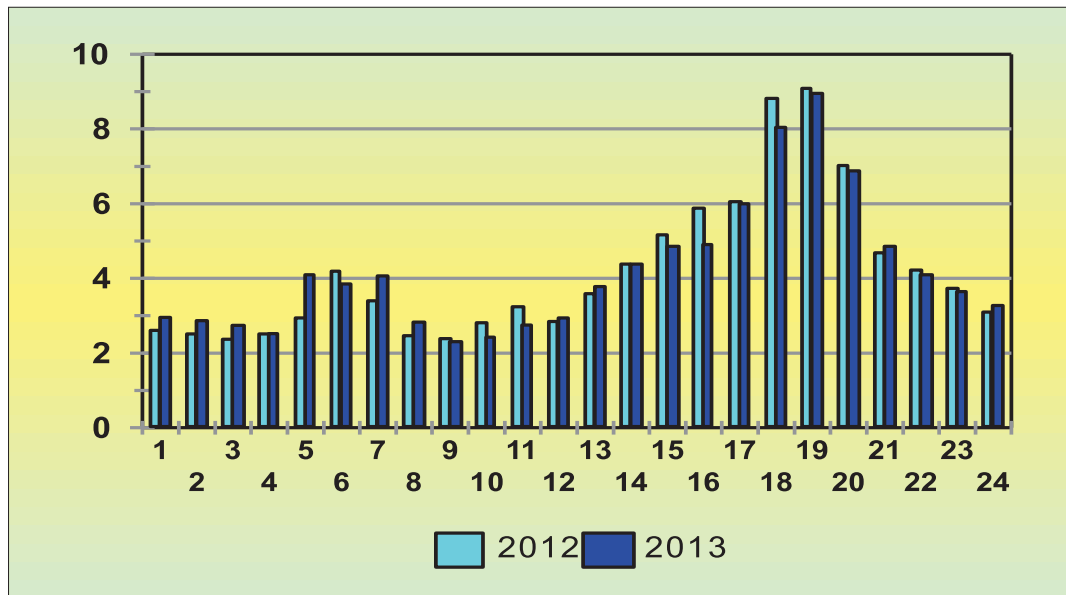
Source: RTMC

The information above shows that almost one quarter (23.35%) of the weekly crashes happen on a Saturday, and 59.37% of all fatal crashes happened over weekends from Friday to Sunday. The graph above reflects the comparison of day-of-week crashes between 2012 and 2013.

5.2 Number of Crashes per Time of Day

The percentage of fatal crashes per time of day during 2012 and 2013 is reflected in the graph 41 below:

Figure 41: Fatal Crashes per Day of Week



Source: RTMC

The above information shows the following percentage of crashes for the respective hours of the day during 2013:

- From 06:00 to 12:00 : 21.16%;
- From 12:00 to 18:00 : 31.96%;
- From 18:00 to 00:00 : 31.7%;
- From 24:00 to 06:00 : 15.18%.

During 2013 15.18% of fatal crashes happened during the early hours of the morning, between midnight and 06:00 in the morning.

About 31.7% of the daily crashes happened between 18:00 in the evening and midnight (24:00). About 46.88% of the daily crashes happened generally during hours of darkness, between 18:00 in the evening and 06:00 the next morning.

6. MAJOR CRASHES INVESTIGATED

During the period January to December 2013 there were one hundred and fifteen (115) major crashes that were investigated by the Corporation. The major crashes refer to the crashes that meet the following criteria:

- a. Fatal crashes in which five (5) or more persons are killed;
- b. Fatal crashes in which four (4) or more vehicles are involved;;
- c. Fatal crashes in which vehicles carrying hazardous substances are involved; or
- d. Any high profile crash that the Corporation deemed necessary to investigate.

6.1 NUMBER OF MAJOR CRASHES INVESTIGATED

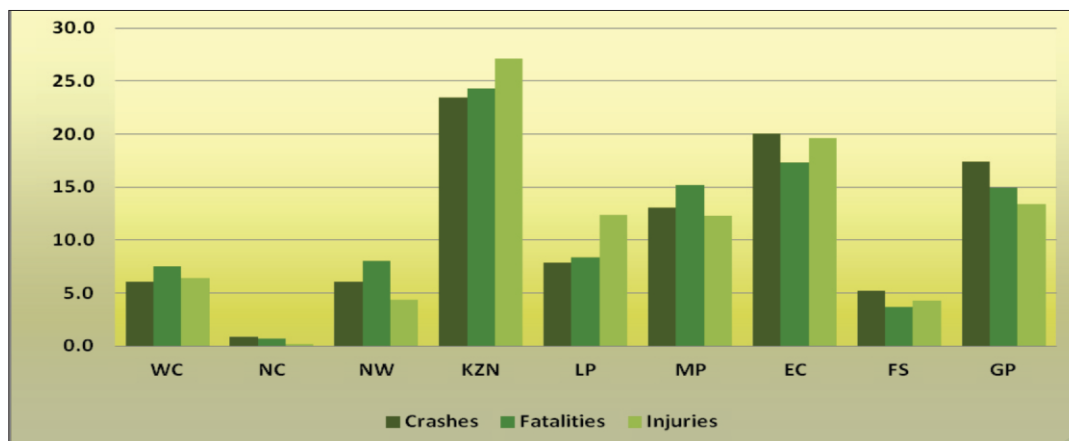
The table and figure below shows the number of crashes, fatalities and injuries per Province. The information below shows that there were 115 fatal crashes with 762 fatalities and 920 injuries during 2013. Provincially KwaZulu-Natal contributed 23.5 to the occurrence of major crashes, with 24.3 contribution to the total fatalities and 27.1 for injuries.

Table Number 33: of crashes, fatalities and injuries per province for Jan–Dec 2013

Province	WC	NC	NW	KZ	LI	MP	EC	FS	GA	RSA
Crashes	7	1	7	27	9	15	23	6	20	115
% Contribution	6.1	0.9	6.1	23.5	7.8	13.0	20.0	5.2	17.4	100.0
Fatalities	57	5	61	185	64	116	132	28	114	762
% Contribution	7.5	0.7	8.0	24.3	8.4	15.2	17.3	3.7	15.0	100.0
Injuries	59	2	40	249	115	113	180	39	123	920
% Contribution	6.4	0.2	4.3	27.1	12.5	12.3	19.6	4.2	13.4	100.0

Source: RTMC

Figure 42: Percentage distribution of crashes, fatalities and injuries per province for Jan – Dec 2013



Source: RTMC

6.2 FATAL CRASHES PER DAY-OF-WEEK

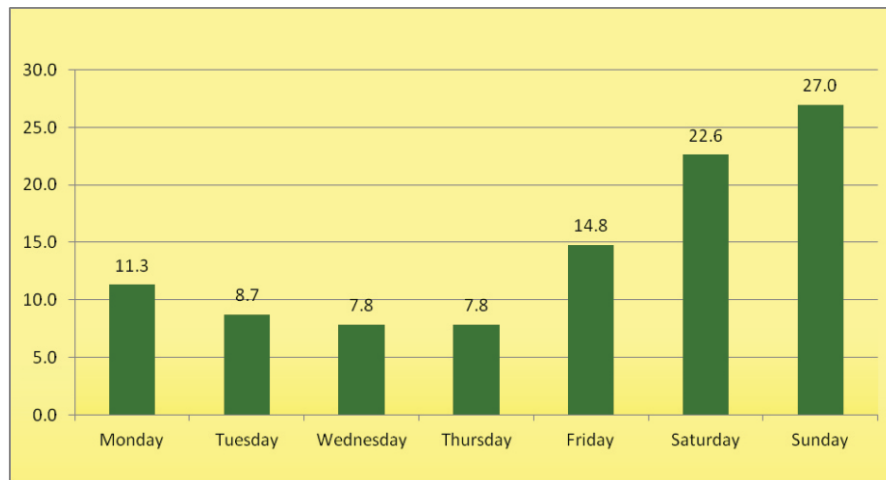
6.2.1 Crashes per Day of Week

The number of major fatal crashes per day of the week per province during 2013 is given in table and graphically reflected in the figure below:

Table 34: Number and Percentage distribution of Major Fatal Crashes per Day of Week: Jan – Dec 2013

Day of week	WC	NC	NW	KZ	LI	MP	EC	FS	GA	RSA	% Contribution
Monday	1	0	2	2	2	3	2	0	1	13	11.3
Tuesday	0	0	0	4	0	0	4	0	2	10	8.7
Wednesday	0	1	0	1	0	2	2	0	3	9	7.8
Thursday	0	0	0	4	1	0	2	1	1	9	7.8
Friday	3	0	1	4	1	3	2	1	2	17	14.8
Saturday	2	0	2	6	1	3	5	2	5	26	22.6
Sunday	1	0	2	6	4	4	6	2	6	31	27.0

Source: RTMC

Figure 43: Percentage distribution of fatal crashes per day of week for Jan – Dec 2013

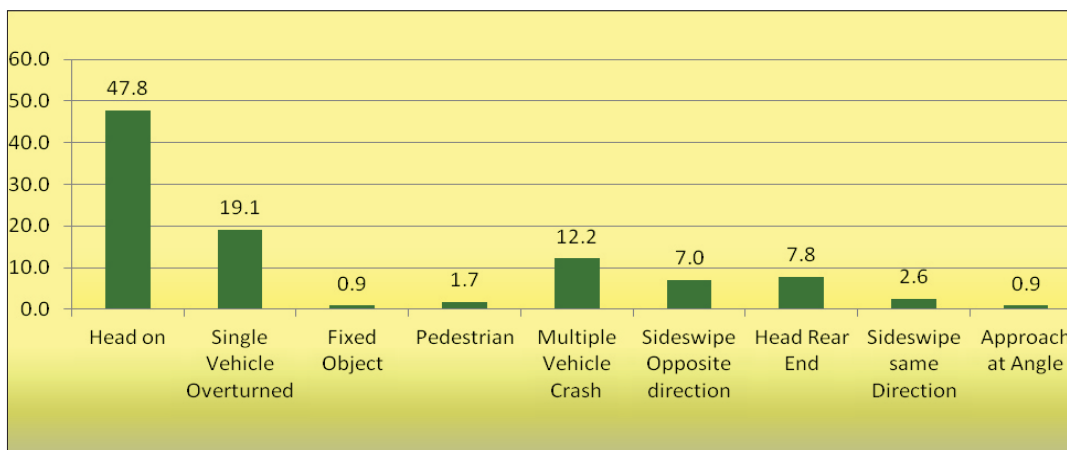
The information above shows that 27.0% of the weekly crashes happen on a Sunday, followed by Saturday with 22.6% and Friday with 14.8%. Most crashes that occurred on Sunday were recorded in KwaZulu Natal, Eastern Cape and Gauteng with 6 crashes in each province.

6.3 CRASH TYPES

The information below shows that most major crashes occurred as a result of head on collision with a contribution of 47,8% and single vehicle overturned with 19,1%. With exception of Western Cape, Northern Cape and Free State all other provinces recorded more than 5 times crashes with head collision as a leading factor.

Crash Type	WC	NC	NW	KZ	LI	MP	EC	FS	GA	RSA	% Contribution
Head on	4	1	6	9	6	8	9	5	7	55	47.8
Single Vehicle Overturned	2	0	0	6	1	3	7	0	3	22	19.1
Fixed Object	1	0	0	0	0	0	0	0	0	1	0.9
Pedestrian	0	0	1	0	0	0	1	0	0	2	1.7
Multiple Vehicle Crash	0	0	0	4	0	2	2	0	6	14	12.2
Sideswipe Opposite direction	0	0	0	3	1	2	1	0	1	8	7.0
Head Rear End	0	0	0	5	1	0	3	0	0	9	7.8
Sideswipe same Direction	0	0	0	0	0	0	0	1	2	3	2.6
Approach at Angle	0	0	0	0	0	0	0	0	1	1	0.9

Figure 44: Percentage contribution per crash type for Jan – Dec 2013



Source: RTMC

6.4 CONTRIBUTORY FACTORS

6.4.1 Vehicle Factor

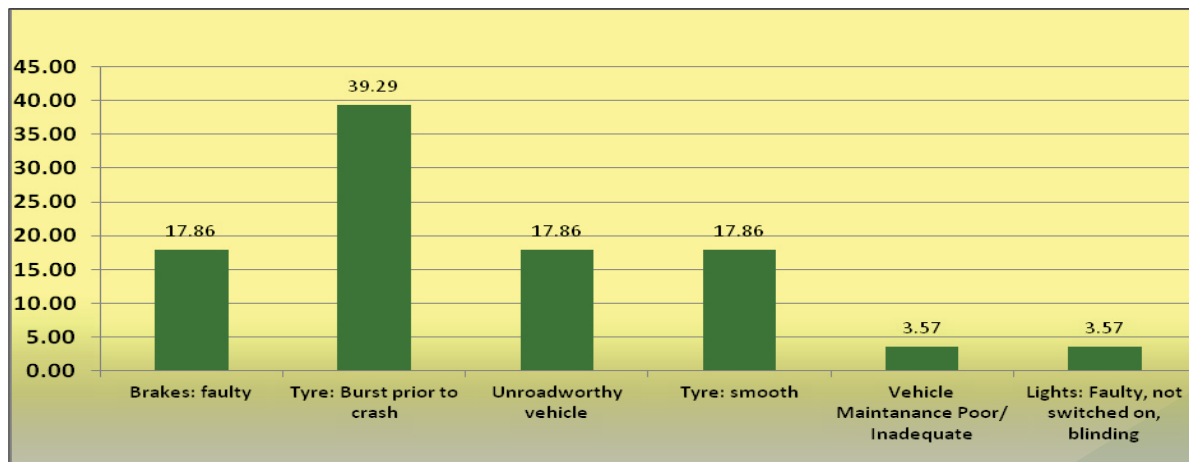
The table and figure below show that tyre burst contributed 39.29% as the leading factor in the major crashes, followed by brakes being faulty, unroadworthy vehicles and tyre being smooth with a contribution of 17.86% respectively.

The information below shows that there are more vehicles on the roads that are not roadworthy but are allowed to drive on South African roads despite the high numbers of crashes and fatalities.

Table 36: Number and Percentage contribution of vehicle factor per Province: Jan –Dec 2013

Vehicle Factor	WC	NC	NW	KZ	LI	MP	EC	FS	GA	RSA	% Contribution
Brakes: faulty	1	0	0	1	0	0	1	0	2	5	17.86
Tyre: Burst prior to crash	0	0	0	2	1	2	2	1	3	11	39.29
Unroadworthy vehicle	0	0	0	2	0	0	2	0	1	5	17.86
Tyre: smooth	0	0	0	0	0	5	0	0	0	5	17.86
Vehicle Maintenance Poor/ Inadequate	0	0	0	0	0	1	0	0	0	1	3.57
Lights: Faulty, not switched on, blinding	0	0	0	0	0	1	0	0	0	1	3.57

Source: RTMC

Figure 45: Percentage distribution of vehicle factor

Source: RTMC

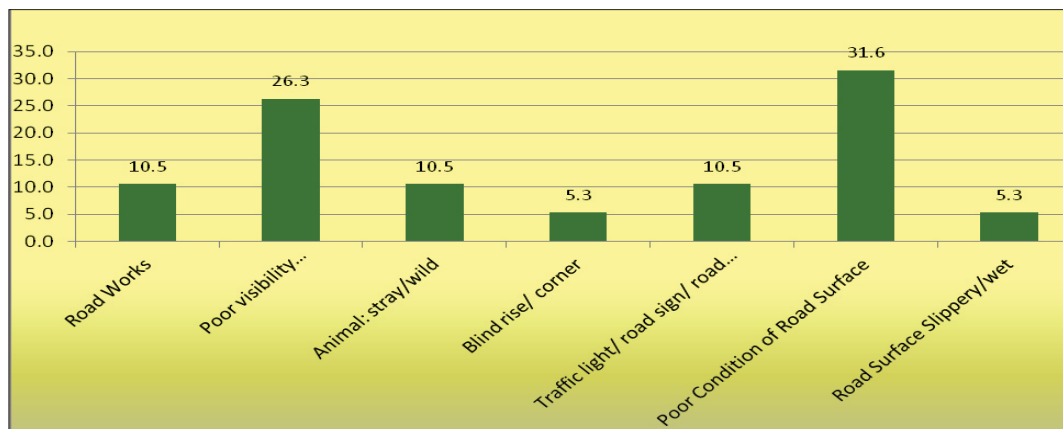
6.4.2 Road Factor

The information below shows that poor condition of road surface is in the lead with a contribution of 31.6%, followed visibility with a contribution of 26.3%.

Table 37: Number and Percentage distribution of road factor per type per Province: Jan – Dec 2013

Road and Environmental Factor	WC	NC	NW	KZ	LI	MP	EC	FS	GA	RSA	% Contribution
Road Works	1	0	0	0	0	0	0	0	1	2	10.5
Poor visibility (rain,fog,mist,dust)	0	0	1	2	0	1	1	0	0	5	26.3
Animal: stray/wild	0	0	0	1	1	0	0	0	0	2	10.5
Blind rise/ corner	0	0	0	1	0	0	0	0	0	1	5.3
Traffic light/ road sign/ road marking defective	0	0	0	1	0	1	0	0	0	2	10.5
Poor Condition of Road Surface	0	0	0	0	0	0	1	2	3	6	31.6
Road Surface Slippery/wet	0	0	0	0	0	0	0	1	0	1	5.3

Source: RTMC

Figure 46: Percentage distribution of road and environmental factor

Source: RTMC

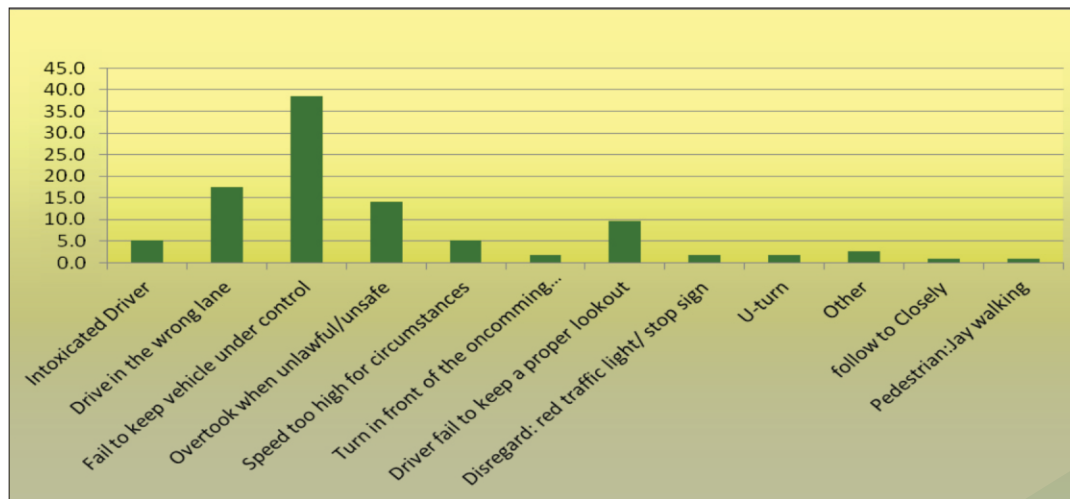
6.4.3 Human Factor

The figure below shows in most case the drivers of the vehicle are found to fail to keep the vehicle under control contributing 38,6%, followed by driving on the wrong side of the road contributing 17,5%.

Table 38: Number and Percentage distribution of human factor per type per Province: Jan – Dec 2013

Human Factor	WC	NC	NW	KZ	LI	MP	EC	FS	GA	RSA	% Contribution
Intoxicated Driver	0	0	1	4	0	0	1	0	0	6	5.3
Drive in the wrong lane	1	1	3	4	2	1	4	0	4	20	17.5
Fail to keep vehicle under control	3	0	1	10	3	6	10	4	7	44	38.6
Overtook when unlawful/unsafe	1	0	2	4	0	4	2	1	2	16	14.0
Speed too high for circumstances	1	0	0	0	1	0	1	0	3	6	5.3
Turn in front of the oncoming traffic	1	0	0	0	0	0	1	0	0	2	1.8
Driver fail to keep a proper lookout	0	0	0	2	2	2	2	1	2	11	9.6
Disregard: red traffic light/ stop sign	0	0	0	1	1	0	0	0	0	2	1.8
U-turn	0	0	0	0	1	0	1	0	0	2	1.8
Other	0	0	0	2	1	0	0	0	0	3	2.6
follow to Closely	0	0	0	0	0	0	0	0	1	1	0.9
Pedestrian: Jay walking	0	0	0	0	0	0	0	0	1	1	0.9

Source: RTMC

Figure 47: Percentage distribution of human factor

Source: RTMC

6.5 VEHICLES INVOLVED IN MAJOR CRASHES

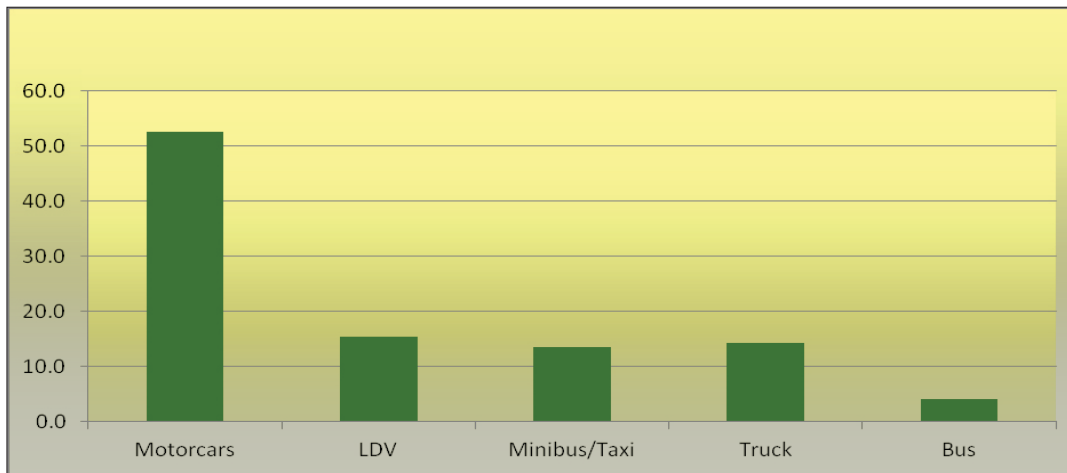
The figure below shows in most case the light motor vehicles contributed 48.4% occurrence of the crashes, followed by light delivery vehicles contributing 15.4%.

Table 39: Number and Percentage distribution of vehicle type involved in major crashes per Province

Major Crashes per Type of Vehicle	WC	NC	NW	KZ	LI	MP	EC	FS	GA	RSA	% Contribution
Motorcars	7	2	6	32	9	23	20	9	86	194	48.5
LDV	4	0	3	10	0	11	11	0	18	57	15.4
Minibus/Taxi	2	0	3	12	4	7	10	3	9	50	13.6
Truck	1	0	0	11	3	8	8	4	18	53	14.4
Bus	1	0	1	3	2	1	6	0	1	15	4.1

Source: RTMC

Figure 48: Percentage distribution of vehicle type involved in major crashes



Source: RTMC

Annexures

A	Number of registered vehicles per province	ii
B-1	Number of Unroadworthy vehicles	iii
B-2	Number of Unlicenced vehicles	iv
B-3	Number of Unroadworthy and unlicenced vehicles	v
C-1	Number of learners licences issued	vi
C-2	Number of drivers licences issued	vii
C-3	Number of PrDPs issued	viii
D	Monthly number of fatal crashes per province	ix
E	Monthly number of fatalities per province	x
F	Number of road user group fatalities per province	xi

Annexure A
Number of Registered Vehicles

Dec 2012	Number of Registered Vehicles per Province									Total RSA
	GA	KZ	WC	EC	FS	MP	NW	LI	NC	
Motorised Veh's										
Motorcars	2,562,553	843,722	1,065,914	388,647	280,314	342,114	266,015	253,930	107,347	6,110,556
Minibuses	111,641	46,937	33,169	20,815	11,919	21,000	16,707	19,459	4,208	285,855
Buses	17,206	7,008	5,658	3,520	2,458	6,125	3,401	4,931	1,379	51,686
Motorcycles	142,916	34,354	79,563	23,618	21,010	20,255	15,341	10,265	8,294	355,616
LDV's - Bakkies	702,603	310,039	282,974	175,974	119,378	177,616	132,696	182,355	69,078	2,152,713
Trucks	130,301	50,937	36,934	22,609	20,116	32,520	17,449	21,889	9,367	342,122
Other & Unkwn	39,072	33,000	35,285	15,176	39,715	27,694	26,366	16,068	8,693	241,067
Sub-Total	3,706,292	1,325,997	1,539,497	650,359	494,910	627,324	477,975	508,897	208,366	9,539,615
Towed Veh's										
Caravans	41,060	8,184	16,638	5,541	7,945	10,159	6,825	5,443	3,050	104,845
Heavy Trailers	55,301	26,569	15,598	8,150	15,158	21,240	10,627	7,107	5,158	164,908
Light Trailers	306,941	76,590	124,155	50,202	59,363	57,329	48,698	36,001	25,205	784,484
Unknown	2,750	1,657	2,286	1,296	2,085	2,161	2,544	1,366	676	16,819
Sub-Total	406,052	113,000	158,677	65,189	84,551	90,889	68,694	49,917	34,089	1,071,056
All Vehicles	4,112,343	1,438,997	1,698,173	715,548	579,461	718,213	546,669	558,813	242,454	10,610,671

Dec 2013	Province									Total RSA
	GA	KZ	WC	EC	FS	MP	NW	LI	NC	
Motorised Veh's										
Motorcars	2,676,050	880,938	1,105,089	400,740	288,316	363,050	277,804	271,655	113,014	6,376,656
Minibuses	114,109	47,234	32,430	21,201	11,883	21,158	16,765	19,978	4,319	289,077
Buses	17,953	7,247	5,961	3,574	2,646	6,781	3,568	5,245	1,519	54,494
Motorcycles	148,056	35,150	83,422	23,901	21,325	20,908	15,499	10,508	8,462	367,231
LDV's - Bakkies	730,380	320,893	288,602	180,517	121,845	186,360	136,856	191,637	71,416	2,228,506
Trucks	132,621	50,380	37,733	22,438	20,616	36,860	17,890	22,508	9,452	350,498
Other & Unkwn	38,107	33,454	36,582	15,786	39,726	28,188	26,025	16,574	9,023	243,461
Sub-Total	3,857,276	1,375,296	1,589,819	668,157	506,357	663,305	494,407	538,105	217,205	9,909,923
Towed Veh's										
Caravans	40,986	8,000	16,709	5,402	7,940	10,229	6,778	5,481	3,069	104,594
Heavy Trailers	56,595	25,917	16,379	7,791	15,923	25,330	10,731	7,549	5,463	171,678
Light Trailers	314,050	77,822	127,215	51,467	60,370	59,182	49,793	37,281	26,117	803,297
Unknown	2,682	1,668	2,296	1,323	2,076	2,124	2,485	1,336	706	16,692
Sub-Total	414,313	113,407	162,599	65,983	86,309	96,865	69,787	51,647	35,355	1,096,261
All Vehicles	4,271,588	1,488,702	1,752,417	734,139	592,665	760,170	564,193	589,751	252,559	11,006,184

% Change Dec 2012-2013	Number of Registered Vehicles per Province									Total RSA
	GA	KZ	WC	EC	FS	MP	NW	LI	NC	
Motorised Vehicles										
Motorcars	4.43	4.41	3.68	3.11	2.85	6.12	4.43	6.98	5.28	4.35
Minibuses	2.21	0.63	-2.23	1.85	-0.30	0.75	0.35	2.67	2.64	1.13
Buses	4.34	3.41	5.36	1.53	7.65	10.71	4.91	6.37	10.15	5.43
Motorcycles	3.60	2.32	4.85	1.20	1.50	3.22	1.03	2.37	2.03	3.27
LDV's - Bakkies	3.95	3.50	1.99	2.58	2.07	4.92	3.13	5.09	3.38	3.52
Trucks	1.78	-1.09	2.16	-0.76	2.49	13.35	2.53	2.83	0.91	2.45
Other & Unknown	-2.47	1.37	3.68	4.02	0.03	1.78	-1.30	3.15	3.80	0.99
Sub-Total	4.07	3.72	3.27	2.74	2.31	5.74	3.44	5.74	4.24	3.88
Towed Vehicles										
Caravans	-0.18	-2.25	0.43	-2.51	-0.06	0.69	-0.69	0.70	0.62	-0.24
Heavy Trailers	2.34	-2.45	5.01	-4.40	5.05	19.26	0.98	6.22	5.91	4.11
Light Trailers	2.32	1.61	2.46	2.52	1.70	3.23	2.25	3.56	3.62	2.40
Unknown	-2.47	0.63	0.44	2.04	-0.46	-1.71	-2.34	-2.20	4.44	-0.76
Sub-Total	2.03	0.36	2.47	1.22	2.08	6.58	1.59	3.47	3.71	2.35
All Vehicles	3.87	3.45	3.19	2.60	2.28	5.84	3.21	5.54	4.17	3.73

Source: National Traffic Information System (NaTIS)

Annexure B-1

Number of Vehicles that are Unroadworthy

Number of Unroadworthy Vehicles										
Dec 2012	GA	KZ	WC	EC	FS	MP	NW	LI	NC	RSA
Motorised Vehicles										
Motorcars	104,942	31,519	30,527	13,207	13,161	14,281	10,447	8,873	2,459	229,416
Minibuses	16,918	6,672	2,775	2,402	1,552	2,551	2,035	2,173	395	37,473
Buses	2,120	822	481	486	262	702	310	526	195	5,904
Motorcycles	17,071	3,468	4,562	1,522	2,151	3,154	1,936	1,370	598	35,832
LDV's - Bakkies	29,256	12,573	7,175	5,468	4,139	6,252	3,948	5,042	1,370	75,223
Trucks	18,065	7,320	3,839	3,254	3,816	5,448	2,872	3,527	1,775	49,916
Other & Unkwn	2,341	1,872	917	741	2,377	1,901	1,382	1,203	359	13,093
Sub-Total	190,713	64,246	50,276	27,080	27,458	34,289	22,930	22,714	7,151	446,857
Towed Vehicles										
Caravans	1,340	361	406	165	303	449	276	227	98	3,625
Heavy Trailers	6,460	2,984	1,504	833	2,292	2,705	1,261	947	623	19,609
Light Trailers	6,582	2,414	2,379	1,024	1,804	1,589	1,181	1,032	368	18,373
Unknown	185	161	69	53	102	136	111	69	26	912
Sub-Total	14,567	5,920	4,358	2,075	4,501	4,879	2,829	2,275	1,115	42,519
All Vehicles	205,280	70,166	54,634	29,155	31,959	39,168	25,759	24,989	8,266	489,376
Dec 2013	GA	KZ	WC	EC	FS	MP	NW	LI	NC	RSA
Motorised Vehicles										
Motorcars	113,997	32,676	31,540	13,858	13,370	15,241	10,762	9,216	2,646	243,306
Minibuses	17,351	6,623	2,656	2,307	1,501	2,522	1,840	2,098	396	37,294
Buses	2,206	837	541	428	275	709	316	549	214	6,075
Motorcycles	17,314	3,503	4,836	1,572	2,168	3,277	1,950	1,439	608	36,667
LDV's - Bakkies	30,964	12,878	7,561	5,396	4,277	6,818	3,882	5,237	1,399	78,412
Trucks	17,881	7,165	3,779	3,155	3,702	5,805	2,768	3,548	1,824	49,627
Other & Unkwn	2,370	1,918	978	814	2,582	2,002	1,423	1,292	402	13,781
Sub-Total	202,083	65,600	51,891	27,530	27,875	36,374	22,941	23,379	7,489	465,162
Towed Vehicles										
Caravans	1,349	352	430	180	325	439	271	256	108	3,710
Heavy Trailers	6,356	3,023	1,307	774	2,117	2,836	1,182	946	628	19,169
Light Trailers	7,006	2,623	2,576	1,130	1,890	1,714	1,192	1,137	408	19,676
Unknown	150	180	68	60	100	130	110	55	25	878
Sub-Total	14,861	6,178	4,381	2,144	4,432	5,119	2,755	2,394	1,169	43,433
All Vehicles	216,944	71,778	56,272	29,674	32,307	41,493	25,696	25,773	8,658	508,595
% Change	GA	KZ	WC	EC	FS	MP	NW	LI	NC	RSA
Motorised Vehicles										
Motorcars	8.63	3.67	3.32	4.93	1.59	6.72	3.02	3.87	7.60	6.05
Minibuses	2.56	-0.73	-4.29	-3.96	-3.29	-1.14	-9.58	-3.45	0.25	-0.48
Buses	4.06	1.82	12.47	-11.93	4.96	1.00	1.94	4.37	9.74	2.90
Motorcycles	1.42	1.01	6.01	3.29	0.79	3.90	0.72	5.04	1.67	2.33
LDV's - Bakkies	5.84	2.43	5.38	-1.32	3.33	9.05	-1.67	3.87	2.12	4.24
Trucks	-1.02	-2.12	-1.56	-3.04	-2.99	6.55	-3.62	0.60	2.76	-0.58
Other & Unkwn	1.24	2.46	6.65	9.85	8.62	5.31	2.97	7.40	11.98	5.25
Sub-Total	5.96	2.11	3.21	1.66	1.52	6.08	0.05	2.93	4.73	4.10
Towed Vehicles										
Caravans	0.67	-2.49	5.91	9.09	7.26	-2.23	-1.81	12.78	10.20	2.34
Heavy Trailers	-1.61	1.31	-13.10	-7.08	-7.64	4.84	-6.26	-0.11	0.80	-2.24
Light Trailers	6.44	8.66	8.28	10.35	4.77	7.87	0.93	10.17	10.87	7.09
Unknown	-18.92	11.80	-1.45	13.21	-1.96	-4.41	-0.90	-20.29	-3.85	-3.73
Sub-Total	2.02	4.36	0.53	3.33	-1.53	4.92	-2.62	5.23	4.84	2.15
All Vehicles	5.68	2.30	3.00	1.78	1.09	5.94	-0.24	3.14	4.74	3.93

Source: National Traffic Information System (NaTIS)

Annexure B-2
Number of Un-Licensed Vehicles

Number of Unlicensed Vehicles										
Dec 2012	GA	KZ	WC	EC	FS	MP	NW	LI	NC	RSA
Motorised Vehicles										
Motorcars	88,469	24,007	24,658	14,273	10,555	12,314	9,939	10,272	3,418	197,905
Minibuses	6,100	2,024	925	1,039	428	706	739	749	163	12,873
Buses	426	182	84	157	50	116	92	112	34	1,253
Motorcycles	9,568	2,189	4,264	1,328	1,353	1,271	1,022	733	424	22,152
LDV's - Bakkies	20,280	9,526	5,688	6,635	3,370	5,212	4,400	6,014	1,688	62,813
Trucks	3,427	1,377	651	772	497	1,083	615	989	243	9,654
Other & Unkwn	979	989	469	404	912	638	820	512	199	5,922
Sub-Total	129,249	40,294	36,739	24,608	17,165	21,340	17,627	19,381	6,169	312,572
Towed Vehicles										
Caravans	1,150	216	298	171	209	264	203	178	75	2,764
Heavy Trailers	1,022	506	174	134	237	398	226	173	87	2,957
Light Trailers	11,852	2,882	3,219	1,711	1,671	1,801	1,709	1,198	657	26,700
Unknown	148	136	80	53	105	106	129	59	19	835
Sub-Total	14,172	3,740	3,771	2,069	2,222	2,569	2,267	1,608	838	33,256
All Vehicles	143,421	44,034	40,510	26,677	19,387	23,909	19,894	20,989	7,007	345,828
Dec 2013	GA	KZ	WC	EC	FS	MP	NW	LI	NC	RSA
Motorised Vehicles										
Motorcars	95,421	26,301	27,815	15,801	11,211	14,496	10,919	11,470	3,953	217,387
Minibuses	6,275	2,049	1,046	974	472	813	728	792	153	13,302
Buses	436	135	114	123	60	141	117	130	33	1,289
Motorcycles	10,078	2,330	4,491	1,486	1,370	1,325	1,148	821	440	23,489
LDV's - Bakkies	21,506	9,789	6,150	7,034	3,626	6,029	4,495	6,539	1,781	66,949
Trucks	3,327	1,478	609	696	442	1,254	536	980	220	9,542
Other & Unkwn	925	936	517	409	866	785	809	513	195	5,955
Sub-Total	137,968	43,018	40,742	26,523	18,047	24,843	18,752	21,245	6,775	337,913
Towed Vehicles										
Caravans	1,154	256	307	122	197	263	238	210	77	2,824
Heavy Trailers	1,075	423	201	110	164	432	213	157	78	2,853
Light Trailers	11,402	2,996	3,249	1,770	1,691	2,037	1,816	1,364	702	27,027
Unknown	151	114	102	74	107	104	150	59	39	900
Sub-Total	13,782	3,789	3,859	2,076	2,159	2,836	2,417	1,790	896	33,604
All Vehicles	151,750	46,807	44,601	28,599	20,206	27,679	21,169	23,035	7,671	371,517
% Change	GA	KZ	WC	EC	FS	MP	NW	LI	NC	RSA
Motorised Vehicles										
Motorcars	7.86	9.56	12.80	10.71	6.22	17.72	9.86	11.66	15.65	9.84
Minibuses	2.87	1.24	13.08	-6.26	10.28	15.16	-1.49	5.74	-6.13	3.33
Buses	2.35	-25.82	35.71	-21.66	20.00	21.55	27.17	16.07	-2.94	2.87
Motorcycles	5.33	6.44	5.32	11.90	1.26	4.25	12.33	12.01	3.77	6.04
LDV's - Bakkies	6.05	2.76	8.12	6.01	7.60	15.68	2.16	8.73	5.51	6.58
Trucks	-2.92	7.33	-6.45	-9.84	-11.07	15.79	-12.85	-0.91	-9.47	-1.16
Other & Unkwn	-5.52	-5.36	10.23	1.24	-5.04	23.04	-1.34	0.20	-2.01	0.56
Sub-Total	6.75	6.76	10.90	7.78	5.14	16.42	6.38	9.62	9.82	8.11
Towed Vehicles										
Caravans	0.35	18.52	3.02	-28.65	-5.74	-0.38	17.24	17.98	2.67	2.17
Heavy Trailers	5.19	-16.40	15.52	-17.91	-30.80	8.54	-5.75	-9.25	-10.34	-3.52
Light Trailers	-3.80	3.96	0.93	3.45	1.20	13.10	6.26	13.86	6.85	1.22
Unknown	2.03	-16.18	27.50	39.62	1.90	-1.89	16.28	0.00	105.26	7.78
Sub-Total	-2.75	1.31	2.33	0.34	-2.84	10.39	6.62	11.32	6.92	1.05
All Vehicles	5.81	6.30	10.10	7.20	4.22	15.77	6.41	9.75	9.48	7.43

Source: National Traffic Information System (NaTIS)

Annexure B-3**Number of Vehicles that are Unroadworthy Unlicensed or Both**

Number of Both Unroadworthy & Unlicensed Vehicles										
Dec 2012	GA	KZ	WC	EC	FS	MP	NW	LI	NC	RSA
Motorised Vehicles										
Motorcars	10,062	3,973	3,252	2,124	2,092	2,218	1,410	1,814	402	27,347
Minibuses	2,138	802	250	309	167	277	244	297	41	4,525
Buses	133	71	28	52	18	50	33	48	6	439
Motorcycles	1,715	361	472	172	238	298	200	154	52	3,662
LDV's - Bakkies	2,471	1,616	733	888	497	962	535	973	186	8,861
Trucks	1,018	498	204	240	213	394	187	321	86	3,161
Other & Unkwn	150	107	37	32	104	101	84	64	26	705
Sub-Total	17,687	7,428	4,976	3,817	3,329	4,300	2,693	3,671	799	48,700
Towed Vehicles										
Caravans	98	23	23	7	17	24	23	14	7	236
Heavy Trailers	269	178	28	43	63	119	43	41	18	802
Light Trailers	664	182	180	87	89	126	95	91	31	1,545
Unknown	15	7	6	6	9	9	11	3	1	67
Sub-Total	1,046	390	237	143	178	278	172	149	57	2,650
All Vehicles	18,733	7,818	5,213	3,960	3,507	4,578	2,865	3,820	856	51,350
Dec 2013	GA	KZ	WC	EC	FS	MP	NW	LI	NC	RSA
Motorised Vehicles										
Motorcars	10,427	4,161	3,555	2,269	2,153	2,619	1,497	2,028	436	29,145
Minibuses	2,189	778	316	323	185	320	267	327	44	4,749
Buses	179	42	49	45	28	58	32	52	11	496
Motorcycles	1,821	371	524	199	220	348	225	188	52	3,948
LDV's - Bakkies	2,511	1,648	819	950	580	1,062	513	1,053	175	9,311
Trucks	988	508	204	239	185	534	206	346	92	3,302
Other & Unkwn	133	122	57	46	138	124	98	89	19	826
Sub-Total	18,248	7,630	5,524	4,071	3,489	5,065	2,838	4,083	829	51,777
Towed Vehicles										
Caravans	101	30	30	8	21	35	27	34	3	289
Heavy Trailers	294	121	41	37	48	140	87	51	25	844
Light Trailers	623	235	177	89	108	174	109	95	28	1,638
Unknown	16	10	2	5	8	6	15	4	2	68
Sub-Total	1,034	396	250	139	185	355	238	184	58	2,839
All Vehicles	19,282	8,026	5,774	4,210	3,674	5,420	3,076	4,267	887	54,616
% Change	GA	KZ	WC	EC	FS	MP	NW	LI	NC	RSA
Motorised Vehicles										
Motorcars	3.63	4.73	9.32	6.83	2.92	18.08	6.17	11.80	8.46	6.57
Minibuses	2.39	-2.99	26.40	4.53	10.78	15.52	9.43	10.10	7.32	4.95
Buses	34.59	-40.85	75.00	-13.46	55.56	16.00	-3.03	8.33	83.33	12.98
Motorcycles	6.18	2.77	11.02	15.70	-7.56	16.78	12.50	22.08	0.00	7.81
LDV's - Bakkies	1.62	1.98	11.73	6.98	16.70	10.40	-4.11	8.22	-5.91	5.08
Trucks	-2.95	2.01	0.00	-0.42	-13.15	35.53	10.16	7.79	6.98	4.46
Other & Unkwn	-11.33	14.02	54.05	43.75	32.69	22.77	16.67	39.06	-26.92	17.16
Sub-Total	3.17	2.72	11.01	6.65	4.81	17.79	5.38	11.22	3.75	6.32
Towed Vehicles										
Caravans	3.06	30.43	30.43	14.29	23.53	45.83	17.39	142.86	-57.14	22.46
Heavy Trailers	9.29	-32.02	46.43	-13.95	-23.81	17.65	102.33	24.39	38.89	5.24
Light Trailers	-6.17	29.12	-1.67	2.30	21.35	38.10	14.74	4.40	-9.68	6.02
Unknown	6.67	42.86	-66.67	-16.67	-11.11	-33.33	36.36	33.33	100.00	1.49
Sub-Total	-1.15	1.54	5.49	-2.80	3.93	27.70	38.37	23.49	1.75	7.13
All Vehicles	2.93	2.66	10.76	6.31	4.76	18.39	7.36	11.70	3.62	6.36

Source: National Traffic Information System (NaTIS)

Annexure C-1**Number of Learner Licences Issued**

Dec 2012	Number of Learners Licences Issued per Province									
Category	GA	KZ	WC	EC	FS	MP	NW	LI	NC	RSA
1	22,553	5,330	16,039	3,432	2,919	3,058	2,272	1,632	1,249	58,484
2	119,244	49,372	97,802	39,966	19,503	12,412	15,256	9,272	7,988	370,815
3	281,959	139,214	81,218	68,738	49,050	87,871	51,338	103,036	20,273	882,697
Total	423,756	193,916	195,059	112,136	71,472	103,341	68,866	113,940	29,510	1,311,996
Dec 2013	Number of Learners Licences Issued per Province									
Category	GA	KZ	WC	EC	FS	MP	NW	LI	NC	RSA
1	20,420	5,690	15,526	3,191	2,828	3,090	2,147	1,688	1,128	55,708
2	96,380	47,393	85,738	34,871	17,261	10,867	12,691	7,948	7,133	320,282
3	264,189	150,714	78,638	68,706	48,938	88,909	50,236	101,295	22,563	874,188
Total	380,989	203,797	179,902	106,768	69,027	102,866	65,074	110,931	30,824	1,250,178
% Change	Number of Learners Licences Issued per Province									
Category	GA	KZ	WC	EC	FS	MP	NW	LI	NC	RSA
1	-9.46	6.75	-3.20	-7.02	-3.12	1.05	-5.50	3.43	-9.69	-4.75
2	-19.17	-4.01	-12.34	-12.75	-11.50	-12.45	-16.81	-14.28	-10.70	-13.63
3	-6.30	8.26	-3.18	-0.05	-0.23	1.18	-2.15	-1.69	11.30	-0.96
Total	-10.09	5.10	-7.77	-4.79	-3.42	-0.46	-5.51	-2.64	4.45	-4.71

Source: National Traffic Information System (NaTIS)

Learner Licences:

Category 1: Motorcycle

Category 2: Light Motor Vehicle

Category 3: Heavy Motor Vehicle

Annexure C-2
Number of Driving Licences Issued

Dec 2012	Number of Driving Licences Issued per Province									
Category	GA	KZ	WC	EC	FS	MP	NW	LI	NC	RSA
A1	163,129	56,869	96,957	32,343	25,443	21,593	18,986	13,714	8,880	437,914
A	45,098	13,047	26,918	9,191	9,177	6,811	6,693	3,944	2,477	123,356
B	765,574	358,764	436,833	172,000	112,358	96,524	93,937	60,018	39,122	2,135,130
EB	3,703	4,775	3,226	890	445	1,548	1,608	1,438	368	18,001
C1	785,713	381,630	141,516	108,663	109,157	236,654	134,171	356,120	42,387	2,296,011
EC1	1,319,831	577,660	773,799	308,249	176,566	161,301	142,782	107,736	64,719	3,632,643
C	275,214	145,857	110,260	63,062	73,055	88,873	51,148	79,855	23,561	910,885
EC	232,767	70,517	51,379	45,556	35,828	52,294	37,651	63,920	11,313	601,225
Total	3,591,029	1,609,119	1,640,888	739,954	542,029	665,598	486,976	686,745	192,827	10,155,165
Dec 2013	Number of Driving Licences Issued per Province									
Category	GA	KZ	WC	EC	FS	MP	NW	LI	NC	RSA
A1	166,241	57,737	100,233	32,709	25,710	21,919	19,098	14,032	9,093	446,772
A	45,062	13,053	27,201	9,183	9,118	6,810	6,614	3,917	2,497	123,455
B	835,700	382,858	469,087	186,201	119,624	103,078	98,721	64,512	42,126	2,301,907
EB	4,030	4,833	3,495	924	462	1,766	1,633	1,530	394	19,067
C1	889,143	426,605	154,418	126,907	117,756	274,639	147,761	402,253	47,432	2,586,914
EC1	1,318,797	577,715	779,849	308,867	176,530	161,180	142,319	108,349	64,971	3,638,577
C	279,441	149,641	111,976	64,432	74,116	92,082	51,420	82,230	23,898	929,236
EC	230,956	70,402	51,041	45,682	35,719	52,265	37,463	64,228	11,362	599,118
Total	3,769,370	1,682,844	1,697,300	774,905	559,035	713,739	505,029	741,051	201,773	10,645,046
% Change	Number of Driving Licences Issued per Province									
Category	GA	KZ	WC	EC	FS	MP	NW	LI	NC	RSA
A1	1.91	1.53	3.38	1.13	1.05	1.51	0.59	2.32	2.40	2.02
A	-0.08	0.05	1.05	-0.09	-0.64	-0.01	-1.18	-0.68	0.81	0.08
B	9.16	6.72	7.38	8.26	6.47	6.79	5.09	7.49	7.68	7.81
EB	8.83	1.21	8.34	3.82	3.82	14.08	1.55	6.40	7.07	5.92
C1	13.16	11.78	9.12	16.79	7.88	16.05	10.13	12.95	11.90	12.67
EC1	-0.08	0.01	0.78	0.20	-0.02	-0.08	-0.32	0.57	0.39	0.16
C	1.54	2.59	1.56	2.17	1.45	3.61	0.53	2.97	1.43	2.01
EC	-0.78	-0.16	-0.66	0.28	-0.30	-0.06	-0.50	0.48	0.43	-0.35
Total	4.97	4.58	3.44	4.72	3.14	7.23	3.71	7.91	4.64	4.82

Source: National Traffic Information System (NaTIS)

Driving licences:

A	Motorcycle > 125 cub.cm	A1	Motorcycle < 125 cub.cm	B	Motor vehicle < 3,5000 kg
C	Motorvehicle > 16,000 kg	C1	Motor vehicle 3,500 – 16,000 kg	EB	Articulated motor vehicle <16,000 kg
		EC	Articulated vehicle > 16,000 kg	EC1	Articulated vehicle 3,500 – 16,000 kg

Annexure C-3**Number of Professional Driving Permits (PrDPs) Issued**

Dec 2012	Number of Professional Driving Permits (PrDPs) Issued per Province									
Category	GA	KZ	WC	EC	FS	MP	NW	LI	NC	RSA
G	2,156	2,279	2,102	783	1,079	1,454	549	1,106	366	11,874
P	2	1	9	0	1	8	0	2	1	24
P G	247,997	148,546	126,430	69,592	56,668	84,890	49,066	94,442	21,953	899,584
D G	43	23	8	6	27	11	24	10	1	153
D P G	9,209	7,213	2,957	1,376	2,277	2,198	961	1,196	484	27,871
Total	259,407	158,062	131,506	71,757	60,052	88,561	50,600	96,756	22,805	939,506
Dec 2013	Number of Professional Driving Permits (PrDPs) Issued per Province									
Category	GA	KZ	WC	EC	FS	MP	NW	LI	NC	RSA
G	2,110	2,152	1,968	744	1,045	1,316	527	1,061	368	11,291
P										
P G	256,251	153,922	129,852	73,103	58,483	88,413	50,446	97,792	22,767	931,029
D G	31	18	6	8	25	14	33	16	7	158
D P G	10,007	7,468	3,228	1,405	2,388	2,259	1,023	1,331	558	29,667
Total	268,399	163,560	135,054	75,260	61,941	92,002	52,029	100,200	23,700	972,145
% Change	Number of Professional Driving Permits (PrDPs) Issued per Province									
Category	GA	KZ	WC	EC	FS	MP	NW	LI	NC	RSA
G	-2.13	-5.57	-6.37	-4.98	-3.15	-9.49	-4.01	-4.07	0.55	-4.91
P	-100.00	-100.00	-100.00	ERR	-100.00	-100.00	ERR	-100.00	-100.00	-100.00
P G	3.33	3.62	2.71	5.05	3.20	4.15	2.81	3.55	3.71	3.50
D G	-27.91	-21.74	-25.00	33.33	-7.41	27.27	37.50	60.00	600.00	3.27
D P G	8.67	3.54	9.16	2.11	4.87	2.78	6.45	11.29	15.29	6.44
Total	3.47	3.48	2.70	4.88	3.15	3.89	2.82	3.56	3.92	3.47

Source: National Traffic Information System (NaTIS)

Professional Driving Permits (PrDPs)

G: Goods

P: Passengers

D: Dangerous goods

Annexure D

Monthly Number of Fatal Crashes per Province: 2010 - 2013

Year	Number of Fatal Crashes per Province per Month										
	Month	GA	KZ	WC	EC	FS	MP	NW	LI	NC	RSA
2010	Jan	121	152	89	92	70	97	65	76	23	785
	Feb	171	164	82	41	52	81	65	80	18	754
	Mch	139	164	93	94	64	80	79	81	18	812
	Apr	95	205	94	117	59	94	54	95	21	834
	May	197	170	94	105	60	102	66	94	28	916
	Jun	125	209	75	116	74	105	66	94	23	887
	Jul	176	195	93	107	78	116	76	115	20	976
	Aug	166	217	71	114	60	105	88	98	23	942
	Sep	214	206	81	119	64	103	82	108	18	995
	Oct	207	184	78	119	79	106	73	102	28	976
	Nov	181	187	69	107	65	96	71	90	16	882
	Dec	167	196	110	141	98	103	84	127	52	1,078
2011	Jan	140	146	82	89	56	78	62	78	22	753
	Feb	162	148	91	96	46	93	55	67	13	771
	Mch	178	184	88	77	60	78	54	97	19	835
	Apr	210	214	88	105	71	106	71	114	23	1,002
	May	198	197	84	132	62	77	77	106	14	947
	Jun	193	217	89	89	66	100	68	102	20	944
	Jul	214	221	98	142	84	121	81	137	28	1,126
	Aug	197	183	81	102	60	76	89	89	17	894
	Sep	234	192	78	108	77	114	84	106	28	1,021
	Oct	213	196	76	125	69	105	68	127	25	1,004
	Nov	200	156	77	112	73	75	57	81	21	852
	Dec	182	227	107	135	90	109	78	120	32	1,080
2012	Jan	132	140	71	82	38	65	63	59	26	676
	Feb	167	189	76	101	46	83	70	99	28	859
	Mch	189	196	76	86	54	82	61	141	25	910
	Apr	163	184	96	96	70	92	74	132	25	932
	May	170	173	73	94	59	101	67	79	21	837
	Jun	194	202	88	109	70	115	87	119	38	1,022
	Jul	213	264	83	110	69	130	86	121	48	1,124
	Aug	198	180	71	97	64	91	84	124	24	933
	Sep	186	174	75	97	78	107	82	109	31	939
	Oct	34	139	80	81	67	84	76	67	28	656
	Nov	187	160	97	122	78	94	80	140	22	980
	Dec	204	213	118	131	89	105	80	134	35	1,109
2013	Jan	133	148	68	76	17	74	57	59	26	658
	Feb	141	178	62	69	26	90	39	58	29	692
	Mch	220	216	77	103	25	106	77	101	27	952
	Apr	201	174	88	100	30	82	60	89	24	848
	May	218	129	83	71	46	71	58	72	24	772
	Jun	163	227	89	124	64	129	84	132	26	1,038
	Jul	80	215	84	103	50	109	70	89	22	822
	Aug	159	216	81	104	53	105	79	98	22	917
	Sep	206	192	72	105	32	121	94	107	26	955
	Oct	140	148	59	73	34	80	70	94	26	724
	Nov	229	126	73	91	39	87	58	108	18	829
	Dec	119	221	92	145	60	104	69	122	31	963

Annexure E

Monthly Number of Fatalities per Province: 2010 – 2013

Year	Number of Fatalities per Province per Month										
	Month	GA	KZ	WC	EC	FS	MP	NW	LI	NC	RSA
2010	Jan	135	213	97	109	101	105	83	102	26	971
	Feb	181	235	105	60	66	99	70	127	72	1,015
	Mch	154	176	140	121	139	91	128	114	25	1,088
	Apr	100	274	98	195	106	117	65	121	23	1,099
	May	212	188	175	151	77	122	107	111	36	1,179
	Jun	136	266	89	180	98	144	88	130	43	1,174
	Jul	228	261	111	174	95	158	121	151	23	1,322
	Aug	178	252	98	174	89	131	114	149	28	1,213
	Sep	243	227	92	159	102	184	105	147	24	1,282
	Oct	226	236	98	153	91	127	87	114	45	1,177
	Nov	202	211	75	140	83	147	91	112	22	1,083
	Dec	186	248	144	168	123	166	100	151	79	1,365
2011	Jan	150	170	88	111	77	84	78	93	20	871
	Feb	235	171	93	137	58	107	67	102	13	982
	Mch	230	236	96	84	77	107	71	143	19	1,063
	Apr	240	255	96	119	118	164	88	136	33	1,248
	May	220	220	89	167	66	89	97	135	20	1,102
	Jun	238	254	95	112	78	157	85	151	28	1,196
	Jul	217	261	117	167	88	154	99	193	28	1,324
	Aug	203	209	102	113	69	98	98	113	20	1,025
	Sep	277	286	83	108	88	182	109	171	28	1,333
	Oct	222	236	78	175	69	158	73	157	25	1,194
	Nov	289	177	93	171	91	79	64	112	25	1,101
	Dec	202	276	155	189	138	260	90	168	36	1,515
2012	Jan	154	165	92	101	61	83	81	73	28	839
	Feb	195	228	85	109	63	101	78	138	32	1,030
	Mch	227	235	83	102	69	99	80	166	28	1,089
	Apr	187	211	113	111	117	114	87	185	33	1,157
	May	207	236	87	134	72	134	80	100	22	1,072
	Jun	222	216	102	126	81	167	120	138	43	1,214
	Jul	252	300	94	215	99	147	96	168	62	1,433
	Aug	259	211	80	132	77	131	103	145	33	1,171
	Sep	206	195	86	123	96	131	122	137	34	1,131
	Oct	34	149	91	97	80	100	91	82	39	763
	Nov	212	184	115	138	87	119	101	184	27	1,166
	Dec	250	250	144	200	139	152	116	172	40	1,463
2013	Jan	143	186	69	87	17	109	57	69	26	763
	Feb	123	218	64	80	21	97	47	72	31	753
	Mch	220	231	110	134	31	123	87	108	27	1,070
	Apr	211	225	100	124	34	92	70	102	30	988
	May	227	143	89	65	50	76	83	114	35	882
	Jun	167	294	96	165	73	148	114	176	29	1,262
	Jul	75	248	96	126	50	136	82	117	31	960
	Aug	156	265	100	114	68	143	88	124	22	1,079
	Sep	204	214	96	130	32	151	121	119	26	1,092
	Oct	153	161	64	88	39	101	81	108	31	826
	Nov	228	191	74	113	51	115	65	150	12	999
	Dec	121	251	108	178	76	139	99	155	43	1,170

Annexure F-1

2012		Number of Fatalities per Road User Group									
Month	User Group	GA	KZ	WC	EC	FS	MP	NW	LI	NC	RSA
Jan	Drivers	48	38	28	30	19	29	25	23	10	250
	Passengers	30	52	30	35	30	36	29	28	10	280
	Pedestrians	75	75	33	35	13	18	27	23	9	309
	Total	154	165	92	101	61	83	81	73	28	839
Feb	Drivers	56	70	18	27	23	29	35	38	11	306
	Passengers	56	69	27	37	35	41	18	66	12	360
	Pedestrians	84	90	41	45	6	32	25	34	9	364
	Total	195	228	85	109	63	101	78	138	32	1,030
Mch	Drivers	43	61	24	22	39	29	24	50	11	301
	Passengers	59	83	17	30	23	38	28	75	11	364
	Pedestrians	124	92	43	51	8	32	27	41	7	424
	Total	227	235	83	102	69	99	80	166	28	1,089
Apr	Drivers	45	50	35	41	15	30	21	40	10	286
	Passengers	47	46	33	35	82	40	27	88	17	414
	Pedestrians	95	116	45	35	20	44	38	57	7	456
	Total	187	211	113	111	117	114	87	185	33	1,157
May	Drivers	48	42	21	17	29	39	29	22	9	255
	Passengers	61	48	32	74	23	62	33	44	11	388
	Pedestrians	98	146	34	43	21	33	19	33	2	429
	Total	207	236	87	134	72	134	80	100	22	1,072
Jun	Drivers	54	56	30	40	30	47	45	55	12	369
	Passengers	54	40	23	31	34	92	52	55	19	400
	Pedestrians	115	120	50	55	17	27	23	28	12	446
	Total	222	216	102	126	81	167	120	138	43	1,214
Jul	Drivers	95	68	28	32	20	58	43	41	16	402
	Passengers	42	91	27	126	59	48	23	73	32	522
	Pedestrians	115	140	39	56	20	41	30	54	14	509
	Total	252	300	94	215	99	147	96	168	62	1,433
Aug	Drivers	56	53	25	42	23	49	38	40	13	339
	Passengers	112	63	26	50	33	56	33	65	16	454
	Pedestrians	91	95	28	40	20	25	33	40	4	377
	Total	259	211	80	132	77	131	103	145	33	1,171
Sep	Drivers	65	53	14	39	33	40	37	33	14	328
	Passengers	32	44	27	52	33	47	64	55	14	368
	Pedestrians	109	98	45	32	30	44	21	50	5	434
	Total	206	195	86	123	96	131	122	137	34	1,131
Oct	Drivers	13	44	35	34	34	30	46	32	9	277
	Passengers	4	31	21	16	38	36	37	34	21	237
	Pedestrians	17	75	35	47	8	33	8	17	8	249
	Total	34	149	91	97	80	100	91	82	39	763
Nov	Drivers	65	38	36	41	23	37	34	53	10	336
	Passengers	61	51	34	47	23	39	40	101	9	404
	Pedestrians	86	95	44	50	41	44	28	30	9	426
	Total	212	184	115	138	87	119	101	184	27	1,166
Dec	Drivers	75	56	33	51	43	55	47	44	10	412
	Passengers	69	79	59	114	81	65	42	70	17	596
	Pedestrians	106	115	52	36	15	32	28	58	12	455
	Total	250	250	144	200	139	152	116	172	40	1,463
Year Total	Drivers	662	628	327	415	328	472	423	472	134	3,861
	Passengers	627	695	357	647	493	602	426	752	188	4,787
	Pedestrians	1,115	1,256	489	525	220	405	307	465	98	4,880
	Total	2,404	2,579	1,173	1,587	1,041	1,479	1,156	1,689	420	13,528

Annexure F-2

2013		Number of Fatalities per Road User Group									
Month	User Group	GA	KZ	WC	EC	FS	MP	NW	LI	NC	RSA
Jan	Drivers	35	58	22	27	9	37	14	21	17	240
	Passengers	46	63	16	25	2	49	18	35	6	260
	Pedestrians	61	65	32	36	6	22	24	13	3	262
	Total	143	186	69	87	17	109	57	69	26	763
Feb	Drivers	35	68	19	19	9	33	12	27	11	234
	Passengers	25	46	16	37	5	23	19	30	13	213
	Pedestrians	63	104	29	24	6	41	16	16	7	306
	Total	123	218	64	80	21	97	47	72	31	753
Mch	Drivers	87	68	27	39	6	35	36	29	8	336
	Passengers	39	50	51	55	16	51	22	39	14	337
	Pedestrians	94	113	32	39	9	37	28	40	5	398
	Total	220	231	110	134	31	123	87	108	27	1,070
Apr	Drivers	79	58	32	46	9	34	24	23	13	318
	Passengers	43	83	25	37	14	34	17	46	13	312
	Pedestrians	89	85	43	41	11	23	28	33	5	358
	Total	211	225	100	124	34	92	70	102	30	988
May	Drivers	78	32	22	33	14	25	29	33	6	271
	Passengers	46	41	21	9	22	24	37	60	20	279
	Pedestrians	103	70	46	24	14	28	17	21	10	332
	Total	227	143	89	65	50	76	83	114	35	882
Jun	Drivers	46	76	34	47	33	49	47	57	9	397
	Passengers	37	98	20	70	17	52	42	84	10	430
	Pedestrians	84	121	42	48	22	47	25	35	10	435
	Total	167	294	96	165	73	148	114	176	29	1,262
Jul	Drivers	31	59	34	38	23	42	30	26	12	294
	Passengers	19	79	19	38	15	63	33	50	13	328
	Pedestrians	25	110	43	50	12	30	19	41	7	338
	Total	75	248	96	126	50	136	82	117	31	960
Aug	Drivers	56	70	25	24	32	51	28	42	9	336
	Passengers	47	92	24	31	19	59	26	48	7	352
	Pedestrians	53	103	51	60	17	33	33	35	6	390
	Total	156	265	100	114	68	143	88	124	22	1,079
Sep	Drivers	63	65	29	37	12	62	48	41	7	364
	Passengers	46	71	31	51	14	66	44	65	10	398
	Pedestrians	95	78	36	42	6	22	29	14	9	330
	Total	204	214	96	130	32	151	121	119	26	1,092
Oct	Drivers	54	38	21	30	19	43	33	33	10	281
	Passengers	33	48	12	27	13	40	22	27	16	238
	Pedestrians	66	75	32	32	7	17	25	48	5	307
	Total	153	161	64	88	39	101	81	108	31	826
Nov	Drivers	70	41	25	25	15	47	26	40	6	296
	Passengers	52	81	13	34	26	41	18	71	6	341
	Pedestrians	105	68	35	54	11	27	22	40	0	362
	Total	228	191	74	113	51	115	65	150	12	999
Dec	Drivers	36	58	35	35	31	42	32	51	10	329
	Passengers	31	79	25	68	28	62	49	67	26	435
	Pedestrians	54	115	48	74	17	35	18	37	7	406
	Total	121	251	108	178	76	139	99	155	43	1,170
Year Total	Drivers	670	690	325	400	211	501	361	421	117	3,695
	Passengers	465	830	273	479	191	564	348	621	154	3,924
	Pedestrians	892	1,107	468	524	138	363	286	372	73	4,225
	Total	2,027	2,627	1,065	1,403	541	1,429	994	1,414	344	11,844

Road Traffic Management Corporation

Physical Address

Boardwalk Office Park, Boardwalk Boulevard
Faerie Glen, 0043

Postal Address

Private Bag X147, Pretoria, 0001

Telephone Number

012 999 5200

Website Address

www.rtmc.co.za

