



Road Traffic
Management Corporation

State of Road Safety Report
2023-2024 Festive



transport

Department:
Transport
REPUBLIC OF SOUTH AFRICA



Table of contents

Table of contents	ii
List of Figures	4
List of acronyms and abbreviations	6
7. OBJECTIVE OF THE REPORT	7
8. EXECUTIVE SUMMARY	8
SECTION A	9
1. INTRODUCTION	9
2. METHODOLOGY	9
3. ROAD FATAL CRASHES	11
4. ROAD FATALITIES ANALYSIS	21
SECTION B	30
5. INTRODUCTION	30
6. VEHICLE POPULATION	30
7. DRIVER POPULATION	34

List of Tables

Table 1: Number of fatal crashes per Province for the festive periods	11
Table 2: Number of fatalities per province	21
Table 3: Number of registered vehicles per type.....	30
Table 4: Number of registered vehicles per province	31
Table 5: Number of learner licences issued.....	34
Table 6: Number of learner licences issued per province.....	35
Table 7: Number of driving licences issued	37
Table 8: Number of driving licences issued per province	39
Table 9: Number of PrDP's issued	41
Table 10: Number of professional driving permits (PrDP's) issued per province	42

List of Figures

Figure 1: Percentage distribution of fatal crashes	12
Figure 2: Percentage distribution of fatal crashes per day of week.....	13
Figure 3: Percentage distribution of fatal crashes per time of day for two festive periods.....	14
Figure 4: Percentage distribution of fatal crashes per crash type.....	15
Figure 5: Percentage distribution of fatal crashes per vehicle type.....	16
Figure 6: Comparison of contributory factors for festive	17
Figure 7: Percentage distribution of human factors	18
Figure 8: Percentage distribution of road and environmental factors.....	19
Figure 9: Percentage distribution for vehicle factor	20
Figure 10: Percentage distribution fatalities per province during festive	22
Figure 11: Percentage distribution of fatalities per road user	23
Figure 12: Percentage distribution of fatalities per gender.....	24
Figure 13: Percentage distribution of fatalities per race	25
Figure 14: Percentage distribution of fatalities per age for drivers	26
Figure 15: Percentage distribution of fatalities per age for passengers	27
Figure 16: Percentage distribution of fatalities per age for pedestrians.....	28
Figure 17: Percentage distribution of fatalities per age for cyclists.....	29
Figure 17: Percentage Annual Growth in Vehicle Population	32
Figure 18: Percentage Vehicle Registered per province.....	33
Figure 19: Number of learner license issued	35
Figure 20: Percentage change in learner licences issued per province	36
Figure 21: Number of driving licences issued	38
Figure 22: Percentage change in driving licences issued	40

Figure 23: Number of PrDP's issued 42

Figure 24: Percentage in PrDP's issued per province 43

List of acronyms and abbreviations

CHOCOR	:	CULPABLE HOMICIDE CRIME: OBSERVATION REPORT
EC	:	EASTERN CAPE
GA	:	GAUTENG
FS	:	FREE STATE
LI	:	LIMPOPO
MP	:	MPUMALANGA
NC	:	NORTHERN CAPE
NW	:	NORTH WEST
WC	:	WESTERN CAPE
KZN	:	KWAZULU NATAL
SAPS	:	SOUTH AFRICAN POLICE SERVICE
NATIS	:	ELECTRONIC NATIONAL TRAFFIC INFORMATION SYSTEM

7. OBJECTIVE OF THE REPORT

This report is aimed at achieving the following objectives:

- To provide road traffic fatal crashes and fatalities statistics based on the Culpable Homicide Crash: Observation Report (CHoCOR) Forms; and
- To present statistics on registered vehicles, un-roadworthy vehicles, un-licenced vehicles, driving licence and professional driving permits issued.

8. EXECUTIVE SUMMARY

The report seeks to provide the road crash statistics for the period 1 December 2023 to 11 January 2024. The performance is as provided below.

Road Crashes Data

The fatal crashes decreased by 1.1% from 1 299 during 2022/23 to 1 285 in 2023/24. Whilst the number of fatalities decreased by 0.5% from 1 560 during festive period 2022/23 to 1 552 during festive period 2023/24. The most affected road user group during the two festive periods were pedestrians at 41.0% in 2022/23 and 41.2% in 2023/24 of all road users.

Vehicle and driver population

Number of registered vehicles increased by 168 605 (1.30%) from 12 964 430 in December 2022 to 13 133 035 vehicles in December 2023.

Number of learner driving licences issued increased by 10 260 (6.02%) from 1 089 694 in December 2022 to 1 099 954 in December 2023.

Number of driving licences issued increased by 478 969 (3.22%) from 14 897 525 in December 2022 to 15 376 494 in December 2023.

The number of Professional Driving Permits (PrDP's) issued decreased by 78 150 (7.11%) from 1 098 837 in December 2022 to 1 176 987 in December 2023.

SECTION A

1. INTRODUCTION

This report is based on information about fatal crashes that were reported to police stations during festive period 2022/2023 and 2023/2024 using the CHoCOR Form across the country. In addition, the report includes information about registered vehicles, driving licence and professional driving permits issued from the National Traffic Information System (NaTIS).

2. METHODOLOGY

2.1 Road crash data collection methodology

The Culpable Homicide Crash Observation Report (CHoCOR) form is used to collect fatal crashes data on daily basis. South African Police Service (SAPS) is the primary source of the fatal crashes data. SAPS provide the Corporation with a list of all recorded fatal crashes (CAS list) and further to this the Corporation receive the CHoCOR forms from various police stations. Road Traffic Management Corporation captures, processes, and verifies the data to compile a report.

2.2 Crash Data Flow

Data is collected through the CHoCOR forms. The forms are then submitted to the Corporation either by fax, email or through the phone.

2.3 Data processing

The data is captured, processed, and verified for the compilation of the consolidated statistical report. There is a continuous engagement with provinces for validation purpose.

2.4 Limitations

The road traffic information contained in the report is mainly based on the fatal crashes only. There is still a need for in-depth research to be conducted to collect scientific base facts to complement the administrative data.

2.5 Instruments

The Culpable Homicide Crash Observation Report (CHoCOR) forms are being used by Road Traffic Information unit to record fatality data on daily basis.

3. ROAD FATAL CRASHES

The section covers the data in relation to fatal road crashes. The section will encompass the number of fatal crashes and fatalities, contributory factors, fatality data per road user group and major crashes.

3.1 Number of fatal crashes

The table below provides the number of fatal crashes per province comparing the two festive periods. On national basis a decrease of 1.1% has been recorded for the period under review. The provinces that have recorded the highest decrease with regards to the absolute figures are Eastern Cape with 37 less fatal crashes and Free State with less than 13 fatal crashes compared to the previous festive season. Western Cape and Gauteng had increases of 20 and 15 fatal crashes respectively. On percentage basis Eastern Cape recorded a 19.4% decrease and Free State and Northern Cape recorded 15.5% and 15.2% decreases respectively. Western Cape recorded the highest increase of 14.8% followed by Limpopo and Gauteng at 5.5% and 5.4% increases respectively.

FATAL CRASHES PER PROVINCE										
Festive Period	EC	FS	GP	KZN	LP	MP	NC	NW	WC	RSA
2022/2023	191	84	277	218	142	124	46	82	135	1299
2023/2024	154	71	292	213	150	129	39	82	155	1285
CHANGE	-37	-13	15	-5	8	5	-7	0	20	-14
%CHANGE	-19,4%	-15,5%	5,4%	-2,3%	5,6%	4,0%	-15,2%	0,0%	14,8%	-1,1%

Table 1: Number of fatal crashes per Province for the festive periods

The figure table below provides the percentage distribution of fatal crashes per province comparing the two festive periods. The highest percentage distribution is from Gauteng at 21.3% during 2022/2023 and 22.7% during 2023/2024 followed by KwaZulu Natal at 16.8% during 2022/2023 and 16.6% during 2023/2024.

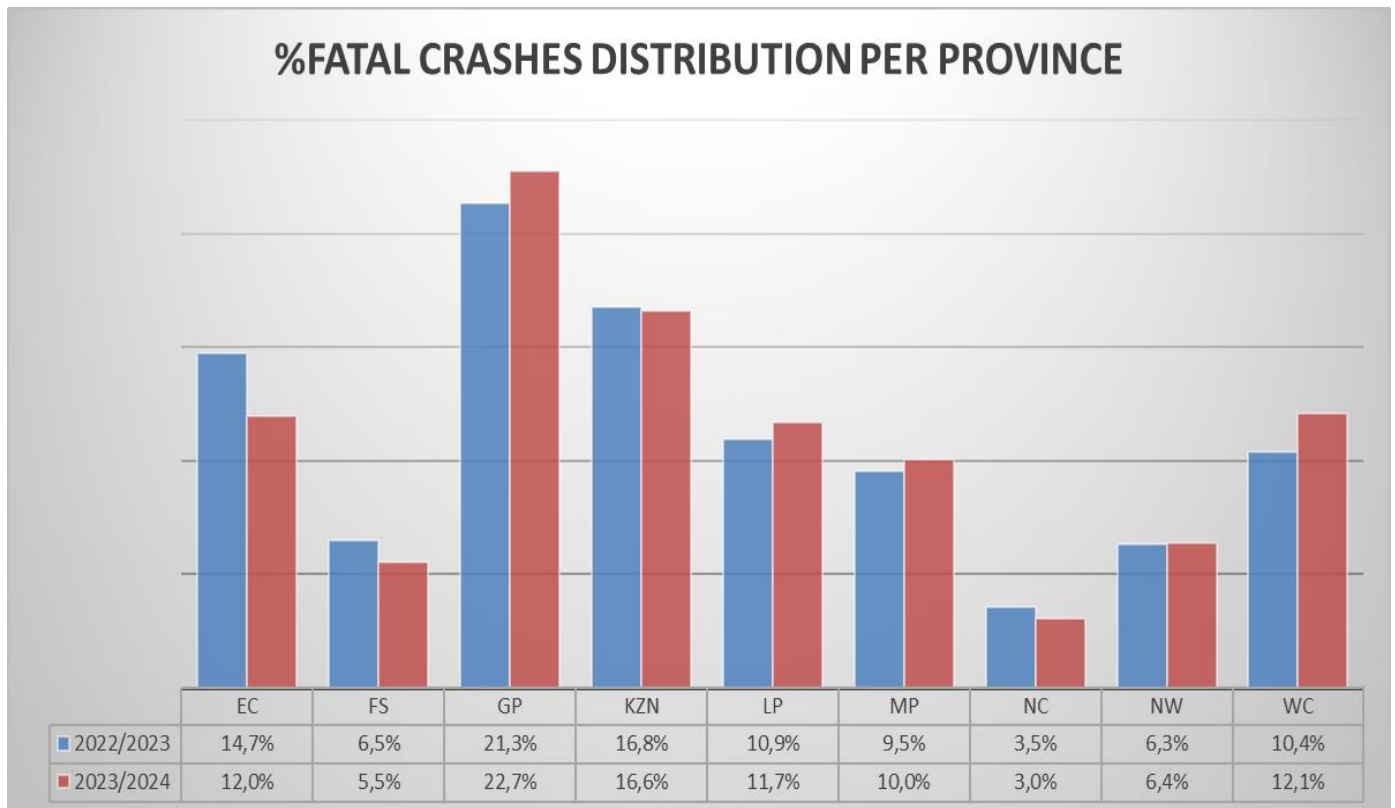


Figure 1: Percentage distribution of fatal crashes

3.2 Fatal Crashes per Day of Week

The details of the fatal crashes per day of the week is given in the figure below. Friday, Saturday, and Sunday were the most affected days of the week. The three-days contributed 59% of fatal crashes in both 2022/2023 and 2023/2024 festive periods.

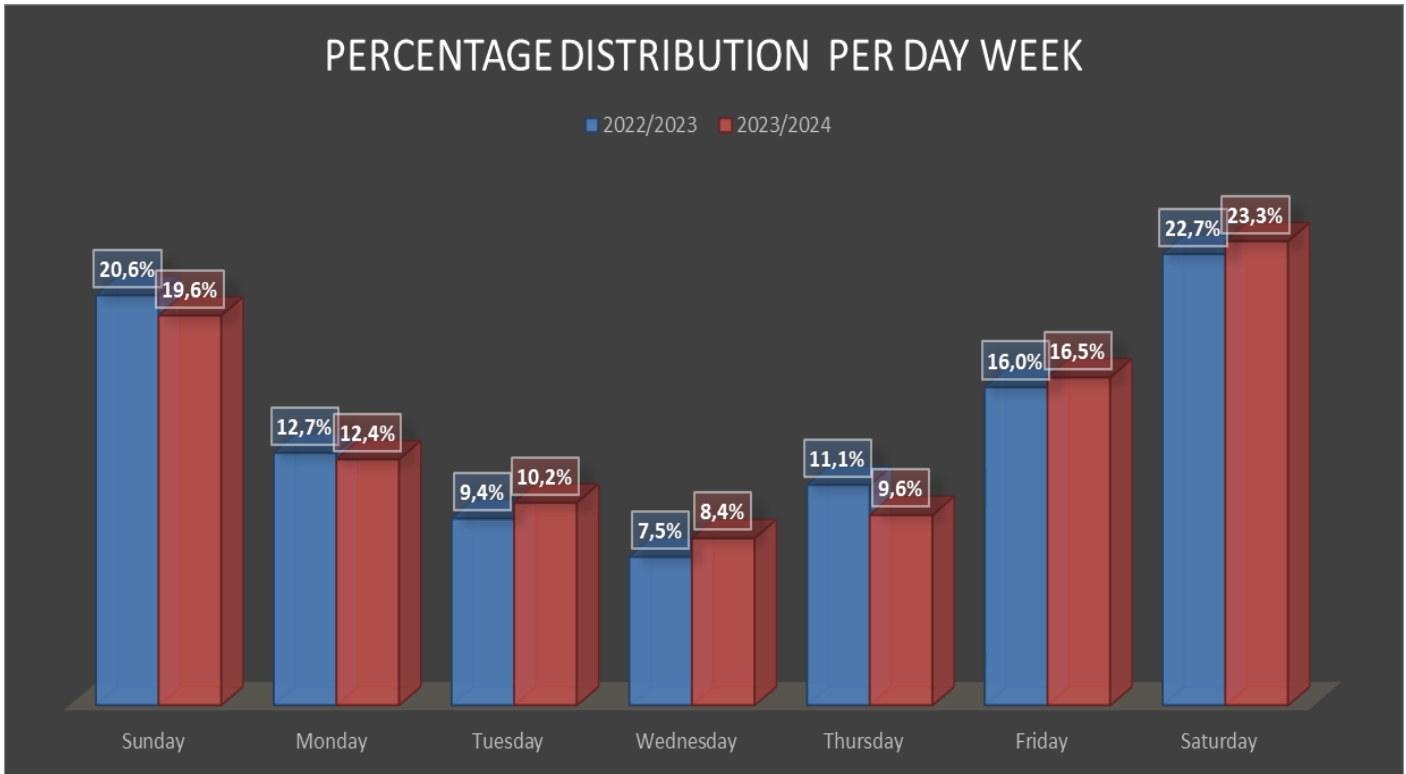


Figure 2: Percentage distribution of fatal crashes per day of week

3.3 Fatal Crashes per time of day

The percentage of fatal crashes per time of day for the period under review is reflected in the figure below.

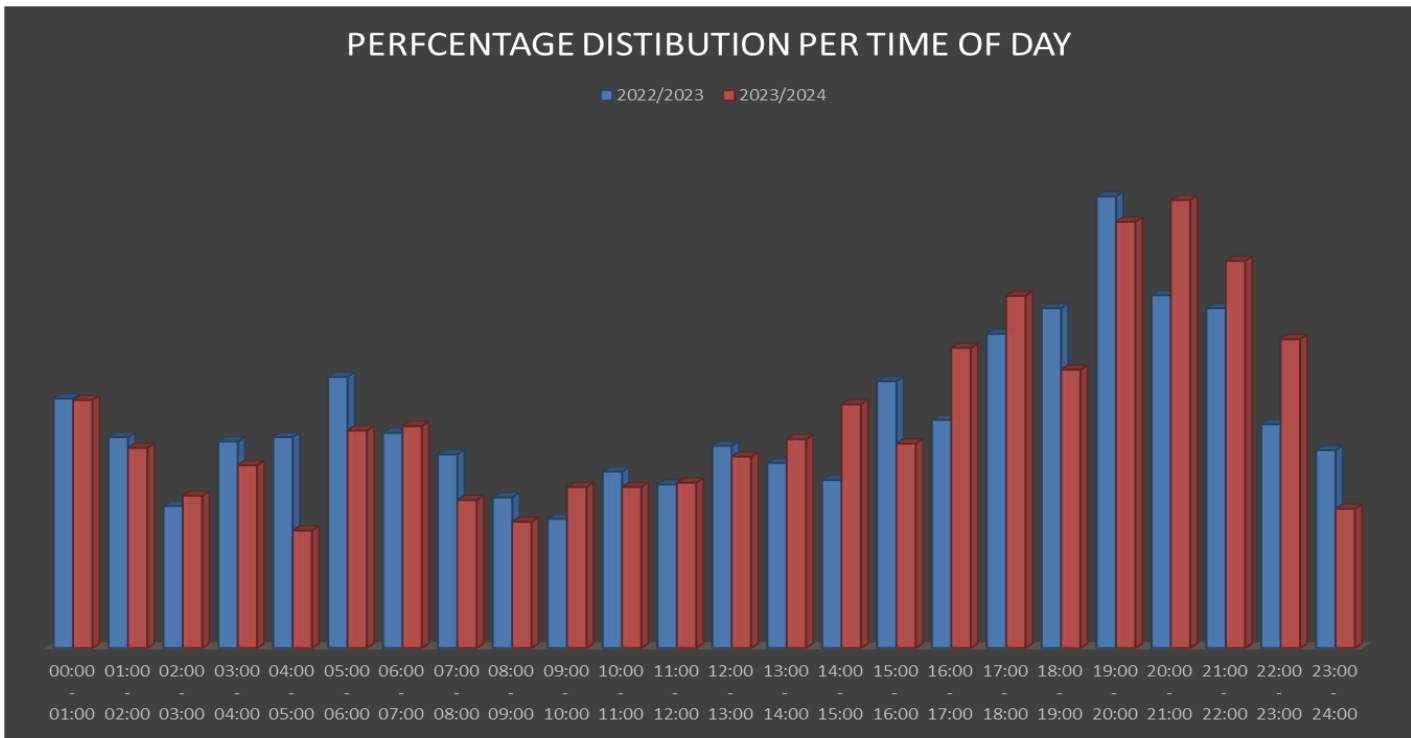


Figure 3: Percentage distribution of fatal crashes per time of day for two festive periods

The figure above shows a comparison of fatal crashes recorded per time of day between 2022/2023 and 2023/2024 festive period. In 2022/2023 the period from 17:00 to 22:00 contributed 32.2% and in 2023/2024 the same period contributed 33.9%.

3.4 Fatal crashes per crash type

The percentage contribution of fatal crashes per crash type is reflected in the figure below.

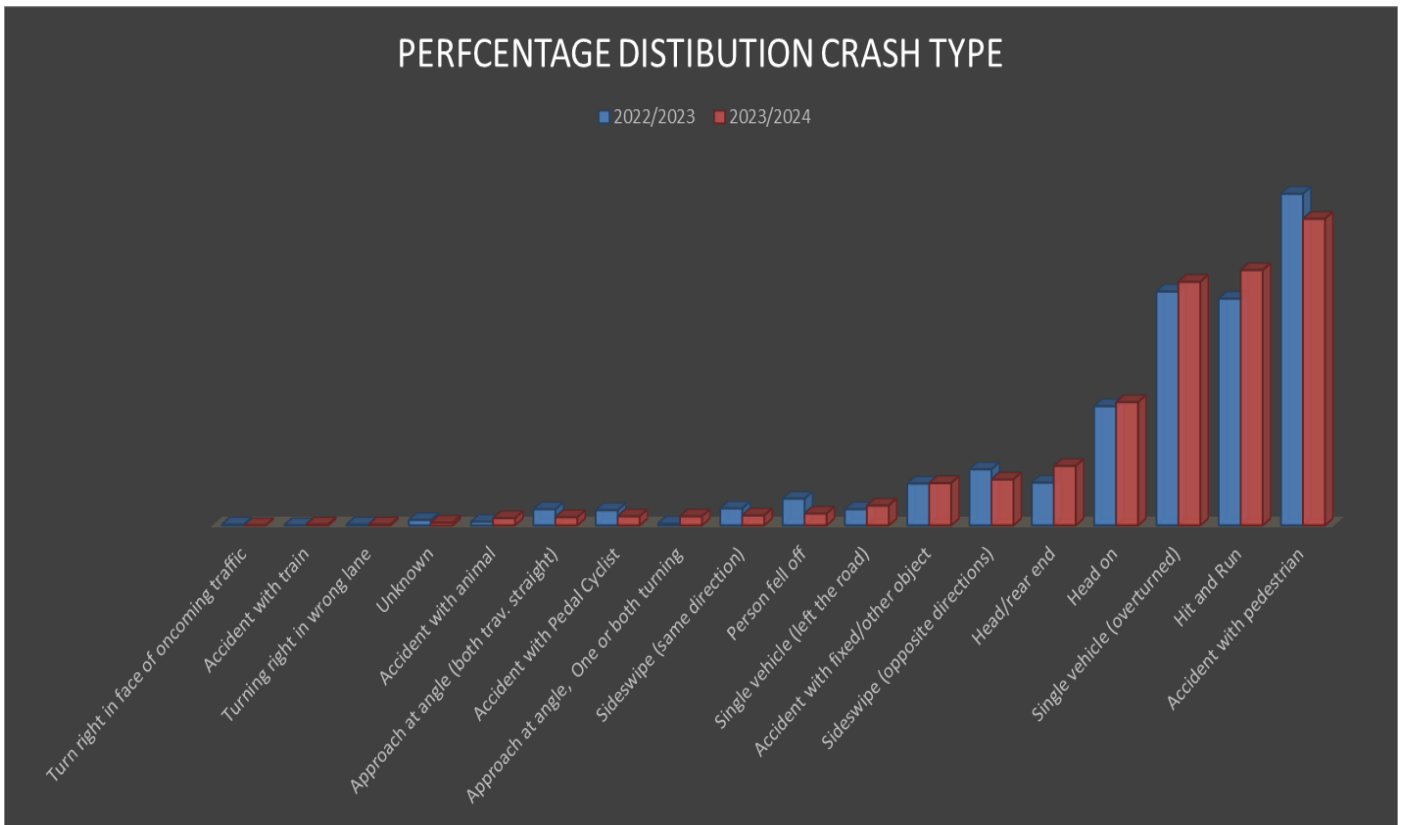


Figure 4: Percentage distribution of fatal crashes per crash type

The top three crash types are accident with pedestrians, single vehicle overturned and hit and runs remained the most contributors to the fatal crashes. These three contributed 68.6% to fatal crashes in the 2022/2023 festive period and 69.7% to fatal crashes in the 2023/2024 festive period.

3.5 Fatal crashes per vehicle type

The percentage contribution of various vehicles type involved in the fatal crashes are reflected in the figure below.

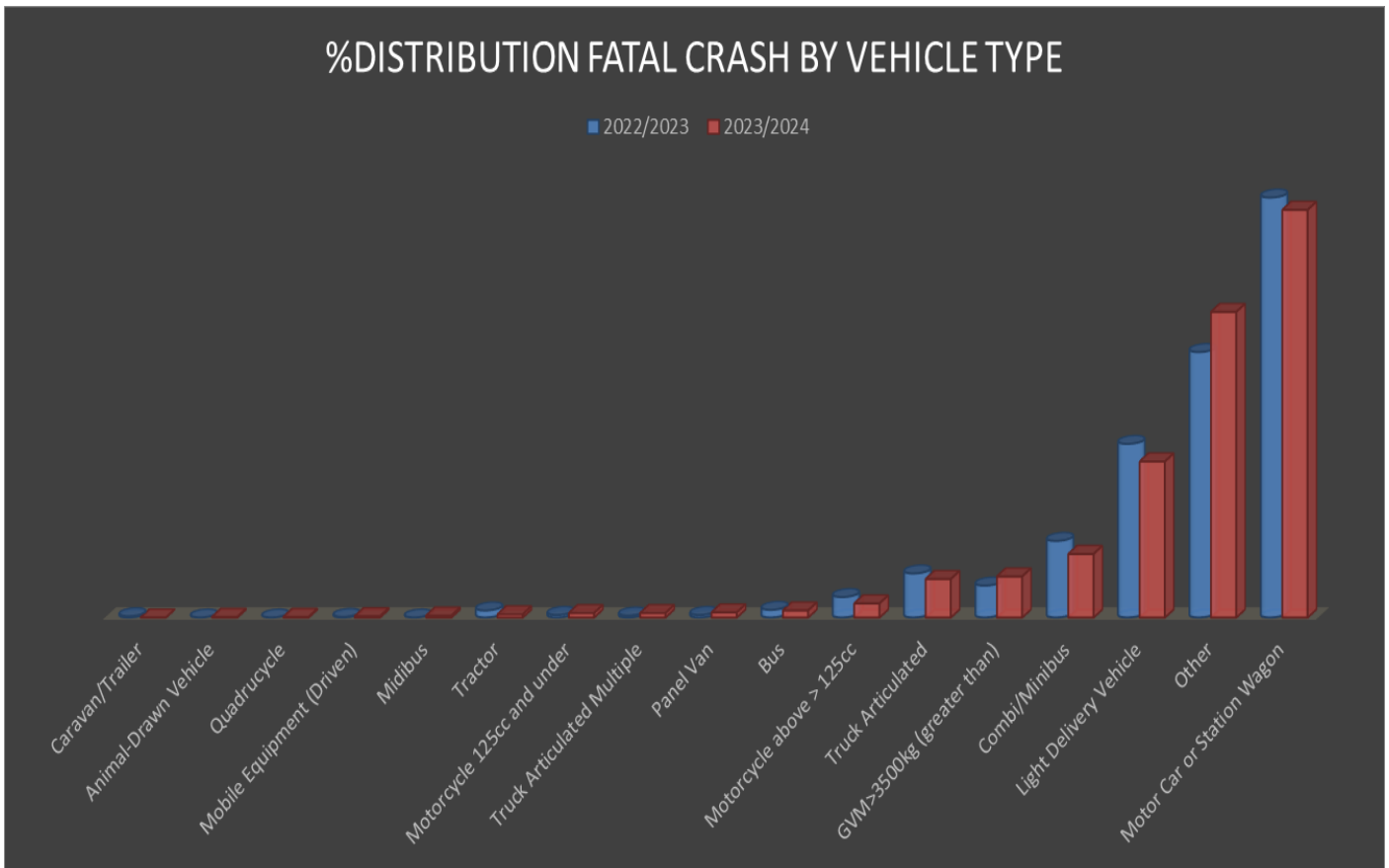


Figure 5: Percentage distribution of fatal crashes per vehicle type

The vehicle types that contributed most to fatal crashes remain motorcars and LDV's with contributions of 39.8% and 16.4% during festive period 2022/2023 and contributions of 38.6% and 14.8% during festive period 2023/2024.

3.6 Contributory factors

Contributory factors for fatal road crashes are determined as follows: human factors (defined as a stable, general human abilities and limitations that are valid for all users regardless); vehicle factors (are more focussed on the vehicle itself and they cover issues around mechanical failures; and environment (include limited visibility, poorly marked roads, missing road signs, sudden

changes in road infrastructure, gravel road, the state of the road and weather conditions).

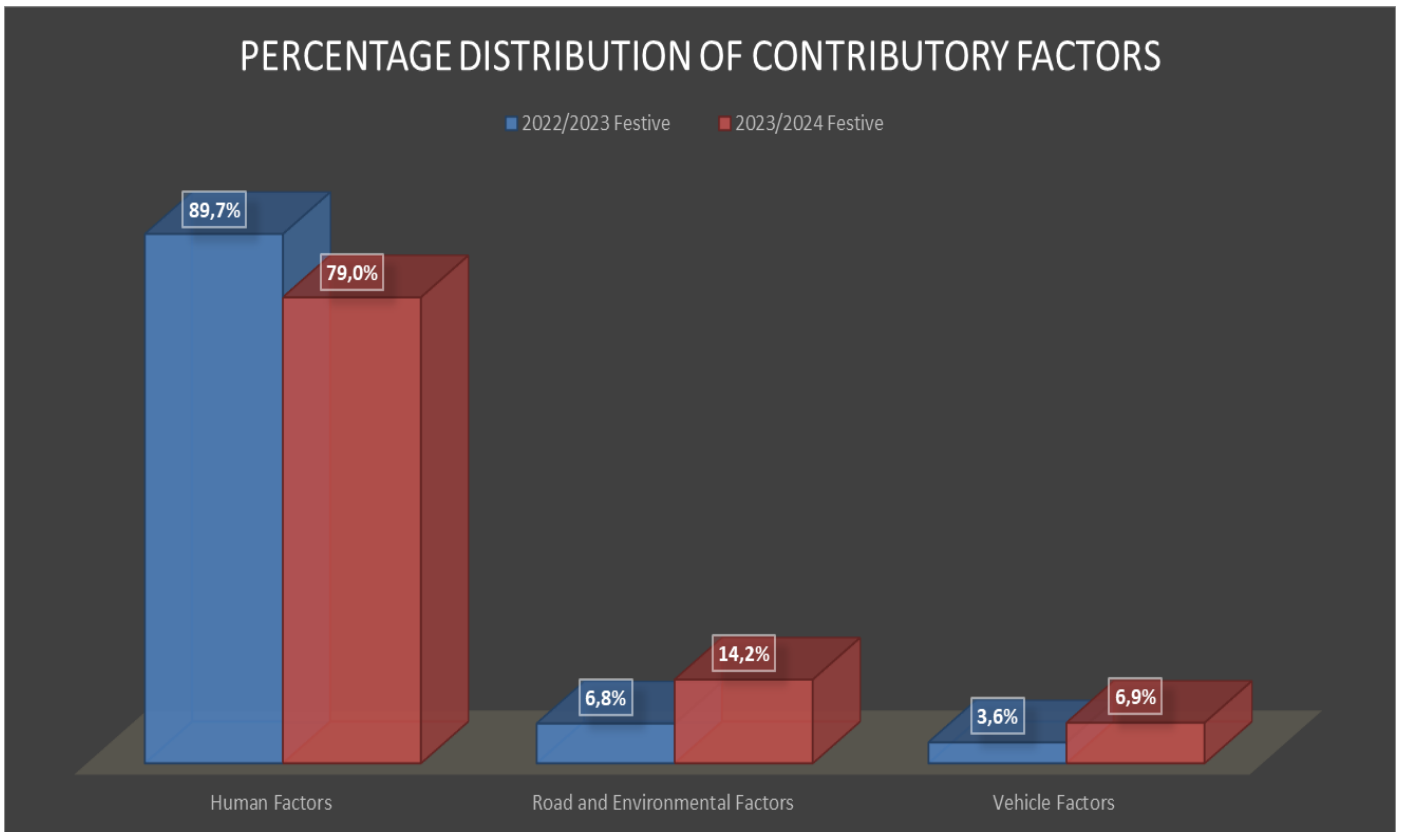


Figure 6: Comparison of contributory factors for festive

The figure above shows that human factors contributed 89.7% during the 2021/2023 and 79.0% during the 2023/2024 festive period. Road and Environmental factors contributed 6.8% during the 2022/2023 and 14.2% during the 2023/2024 festive period. Vehicle factors contributed 3.6% during the 2022/2023 and 6.9% during the 2023/2024 festive period.

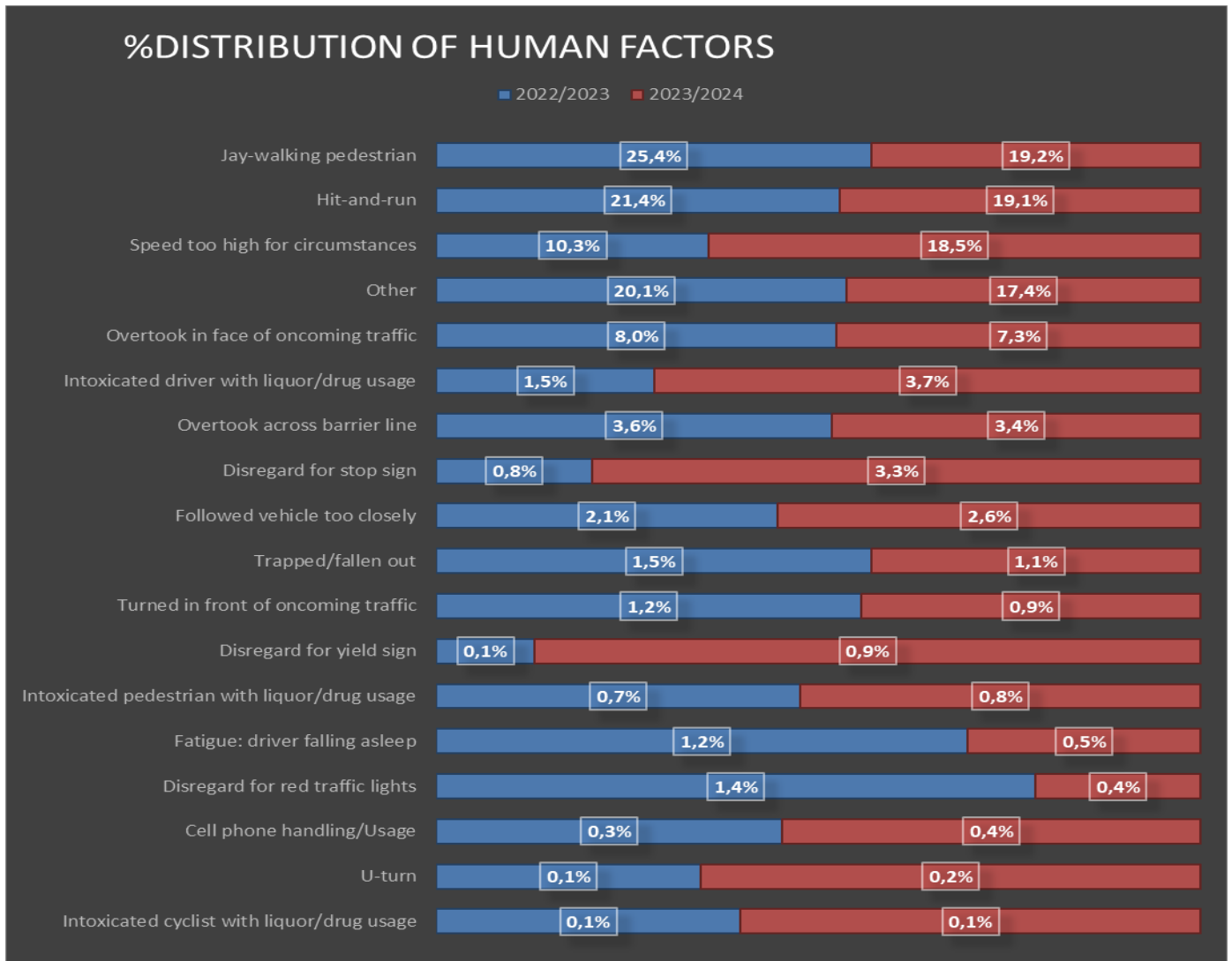


Figure 7: Percentage distribution of human factors

From the above graph jaywalking contributed 25.4% and hit and run contributed 21.4% of human factors during the 2022/2023 festive season. During the 2023/2024 festive season jaywalking contributed 19.2% and hit and run contributed 19.1% of human factors.

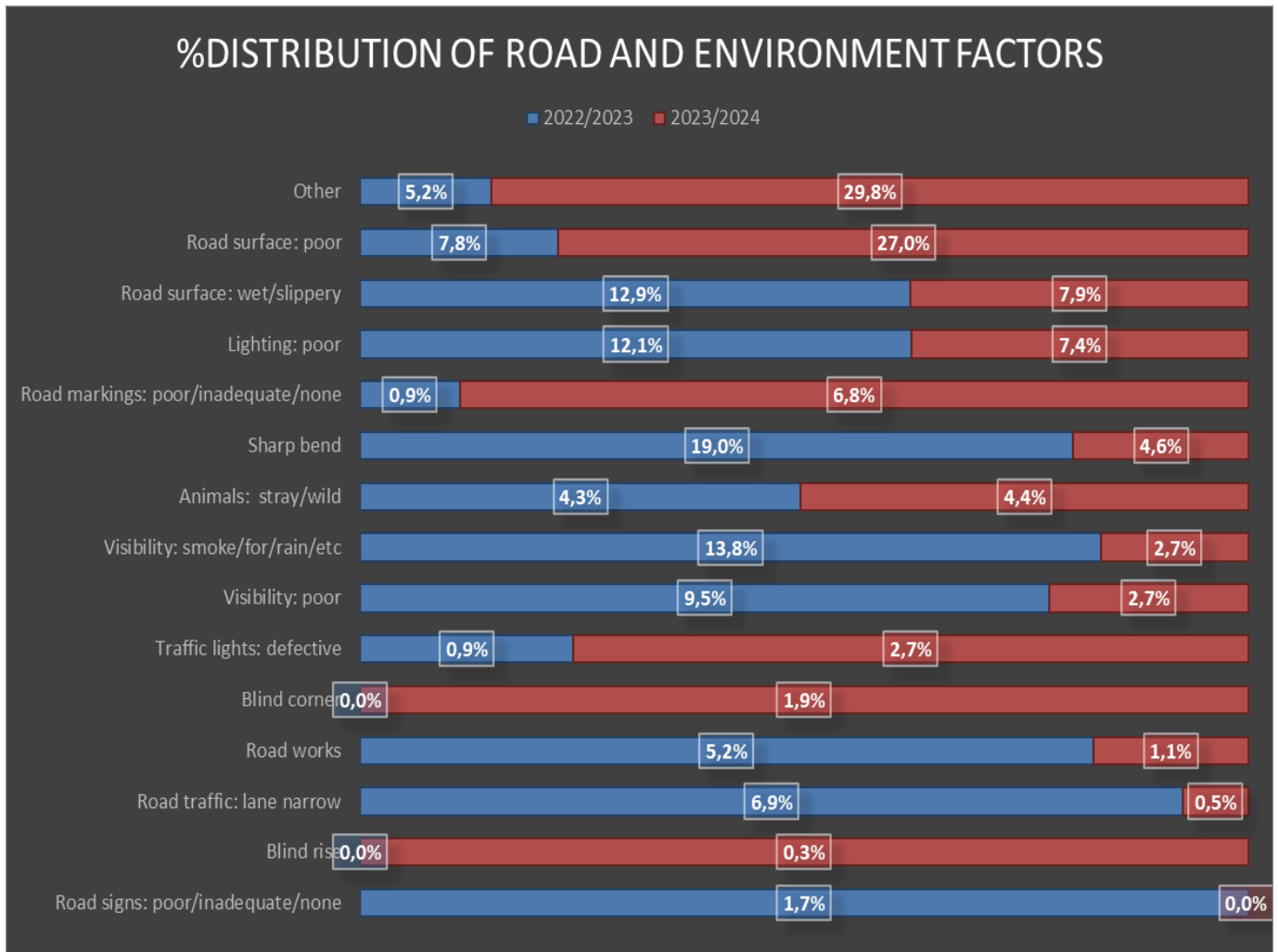


Figure 8: Percentage distribution of road and environmental factors

During the 2022/2023 festive period the top road and environmental factors were sharp bends at 19.0% and Visibility: smoke/rain poor visibility at 13.8%, During the 2023/2024 festive period the top road and environmental factors were Road surface: poor at 27.0%, Road surface: wet/slippy at 7.9% and Lighting poor at 7.4% 13%.

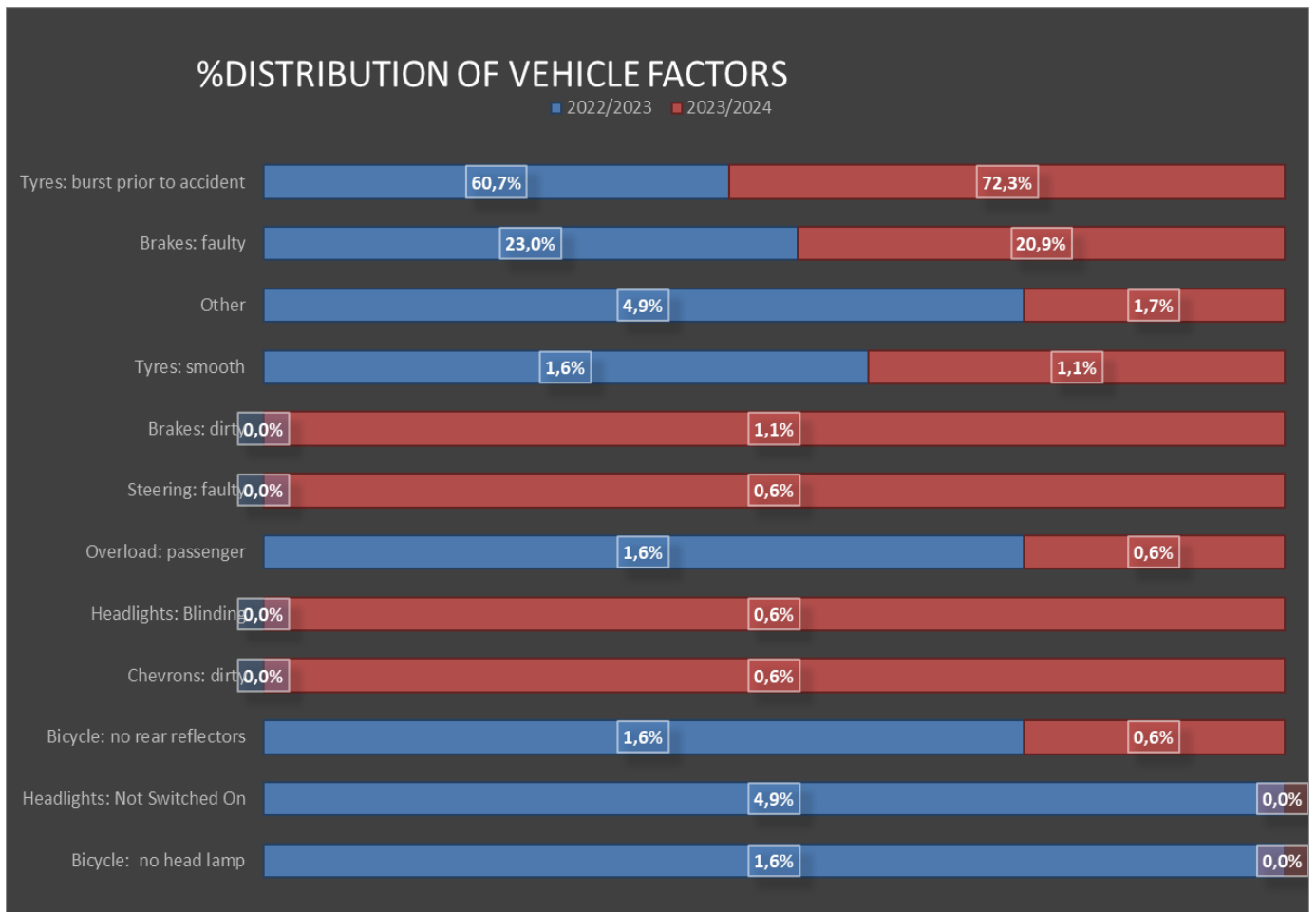


Figure 9: Percentage distribution for vehicle factor

The above graph shows that the top two top causes of road crashes within the vehicle factors were tyre burst prior (at 60.7% during 2022/2023 festive period and 72.3% during the 2023/2024 festive period) and brakes (at 23.0% during 2022/2023 festive period and 20.9% during the 2023/2024 festive period)

4. ROAD FATALITIES ANALYSIS

The section covers the data in relation to road fatalities. Fatalities are defined as when a person or persons are killed during or immediately after a crash, or death within 30 days after a crash happened as a direct result on such crash. This section will encompass the number of fatalities and percentage distribution per road user group, gender, race and per age.

4.1 Fatalities per province

The table below shows the number of fatalities per province comparing the 2022/2023 and the 2023/2024 festive periods. There was a 0.5% decrease in fatalities from the 2022/2023 to the 2023/2024 festive period. Seven provinces recorded a decrease in fatalities.

FATALITIES PER PROVINCE										
Festive Period	EC	FS	GP	KZN	LP	MP	NC	NW	WC	RSA
2022/2023	248	125	295	258	191	146	53	95	149	1560
2023/2024	217	89	316	257	182	167	51	96	177	1552
CHANGE	-31	-36	21	-1	-9	21	-2	1	28	-8
%CHANGE	-12,5%	-28,8%	7,1%	-0,4%	-4,7%	14,4%	-3,8%	1,1%	18,8%	-0,5%

Table 2: Number of fatalities per province

Free State recorded the highest percentage decrease of 28.8% followed by Eastern Cape at 12.5%. Western Cape recorded the highest percentage increase at 18.8% followed by Mpumalanga at 14.4%. The highest number of decrease in fatalities was in Free State (-36), followed by Eastern Cape (-31).

The table figure below shows the percentage distribution of fatalities per province for the two festive periods.

The highest percentage distribution was in Gauteng and KwaZulu Natal at 35.4% during 2022/2023 and 36.9% in 2023/2024.

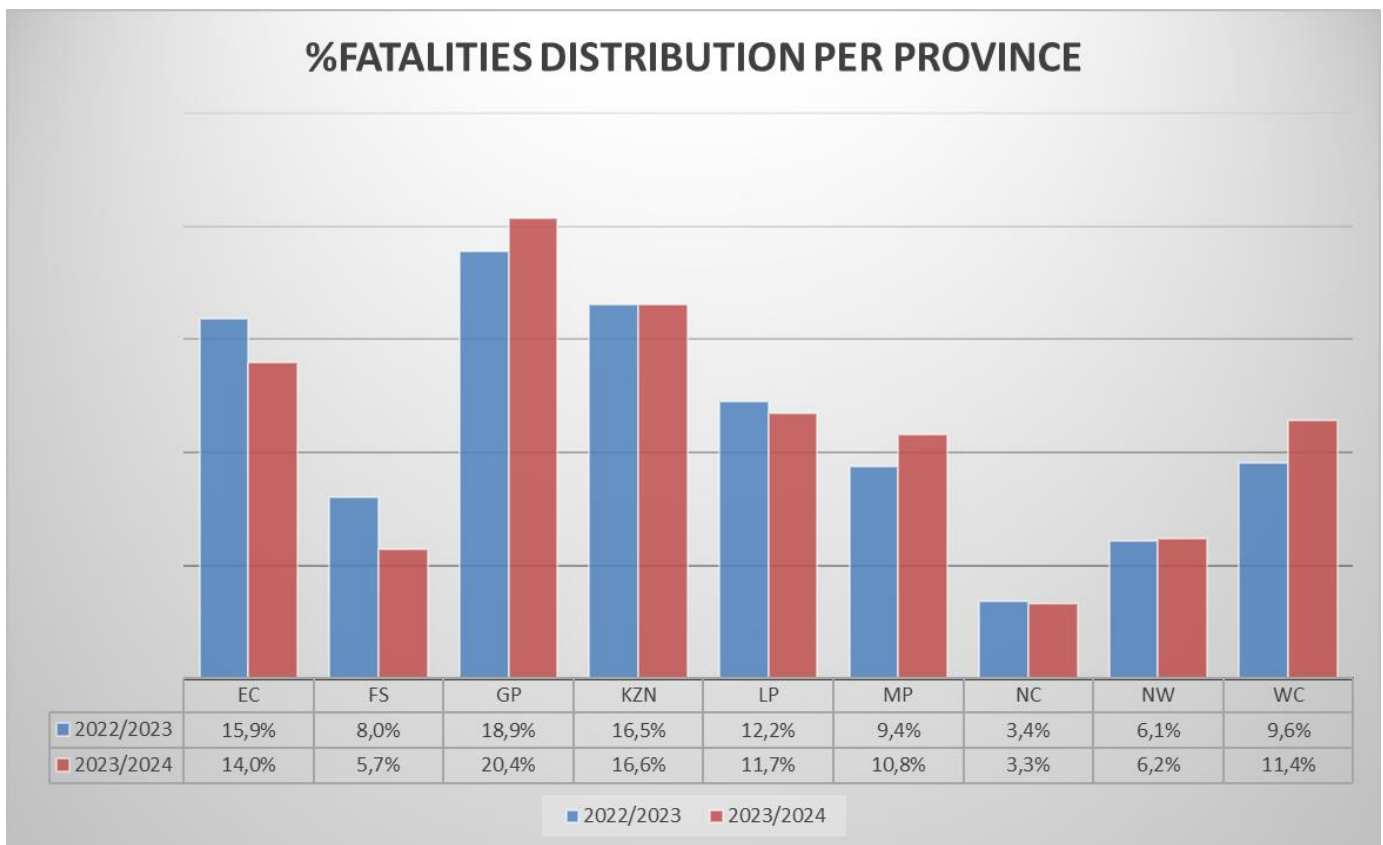


Figure 10: Percentage distribution fatalities per province during festive

4.1 Number of Fatalities per Road User Group

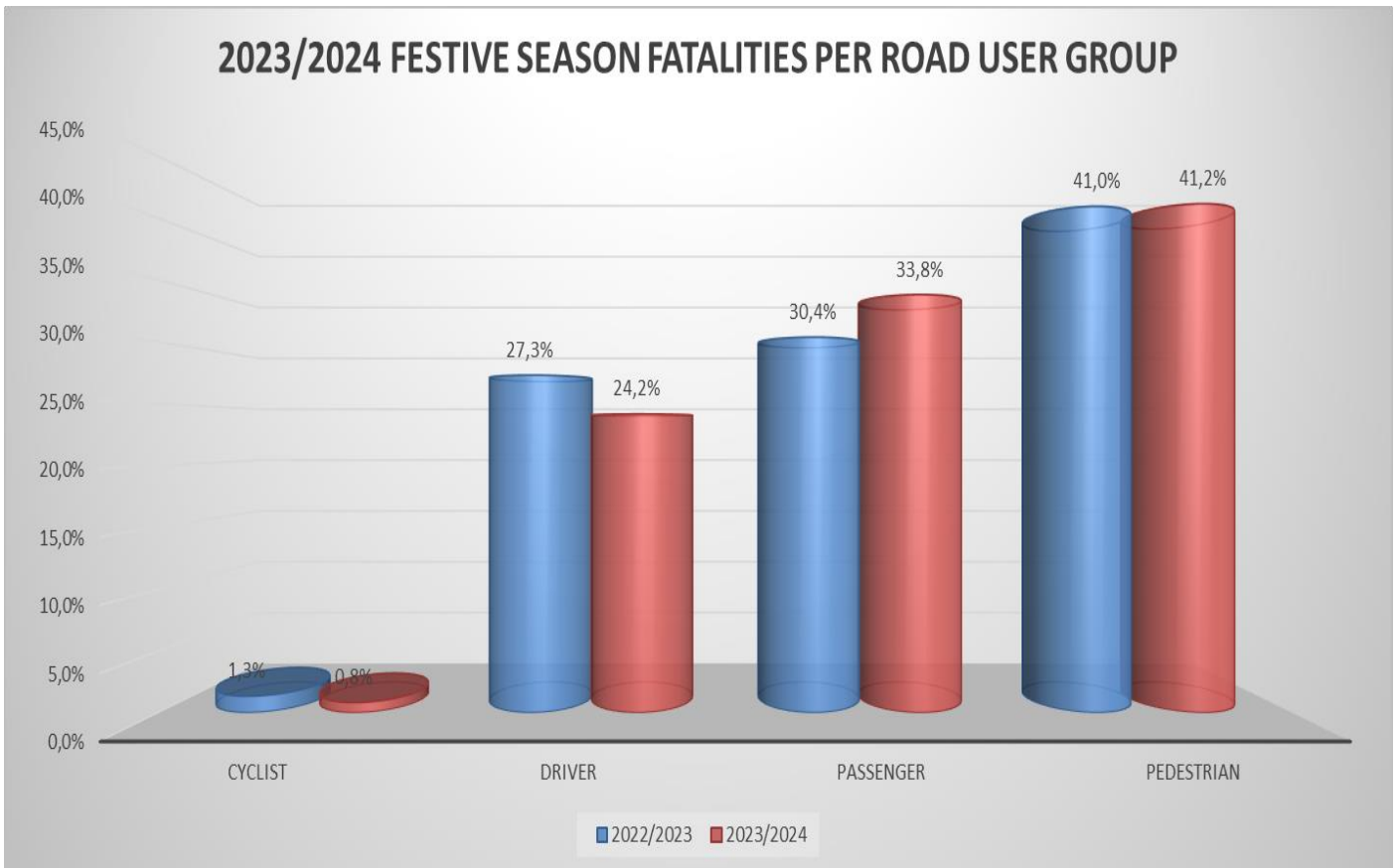


Figure 11: Percentage distribution of fatalities per road user

The percentage distribution of fatalities per road users group is reflected in the graph above. During the period under review pedestrians were at 41.2%, passengers at 33.8%, drivers at 24.2% and cyclist at 0.8%.

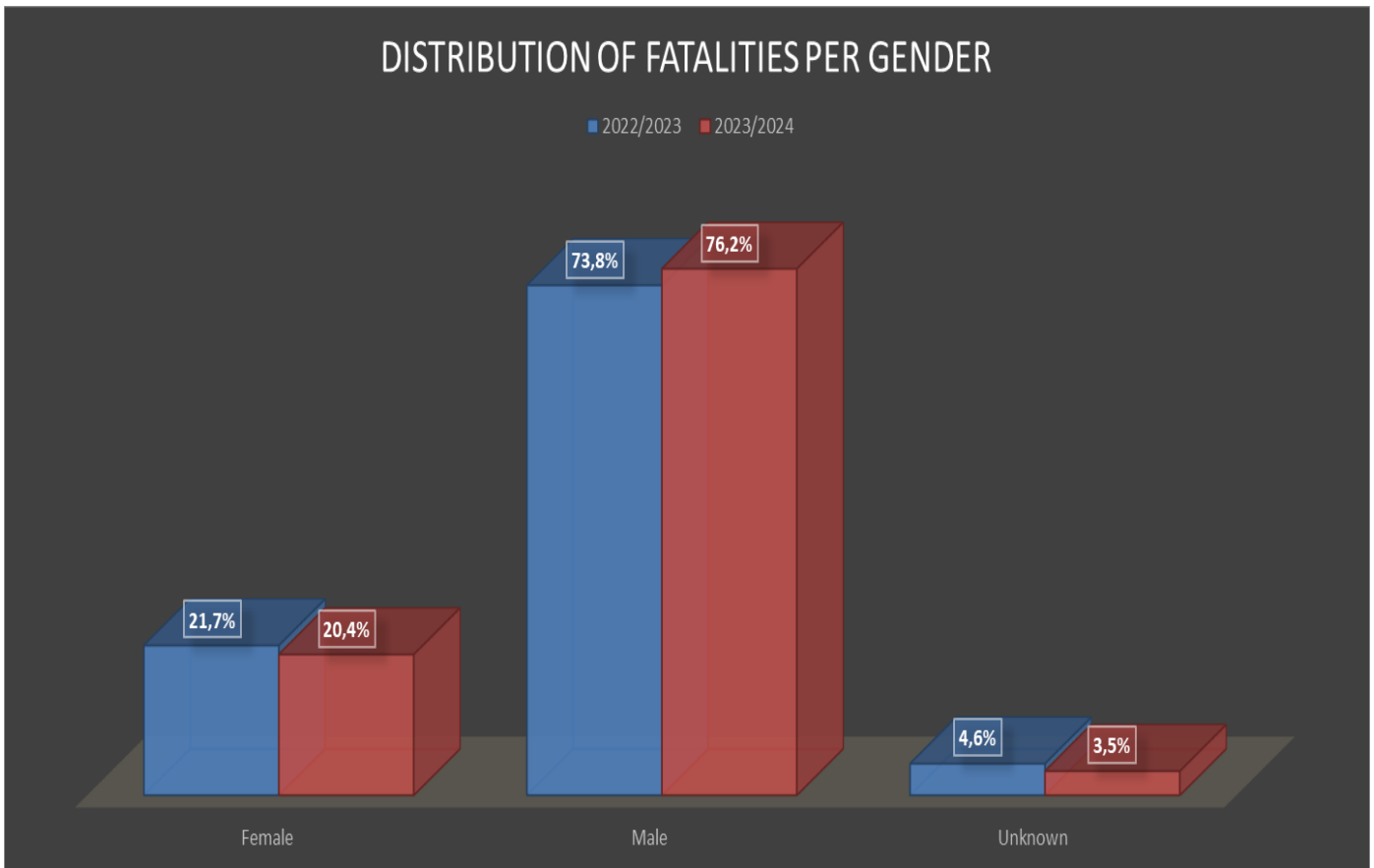


Figure 12: Percentage distribution of fatalities per gender

The graph above depicts trends for fatalities per gender for the two festive periods. The trends show that male fatalities remained above 70% during the two festive periods, whilst female fatalities remained just above 20%.

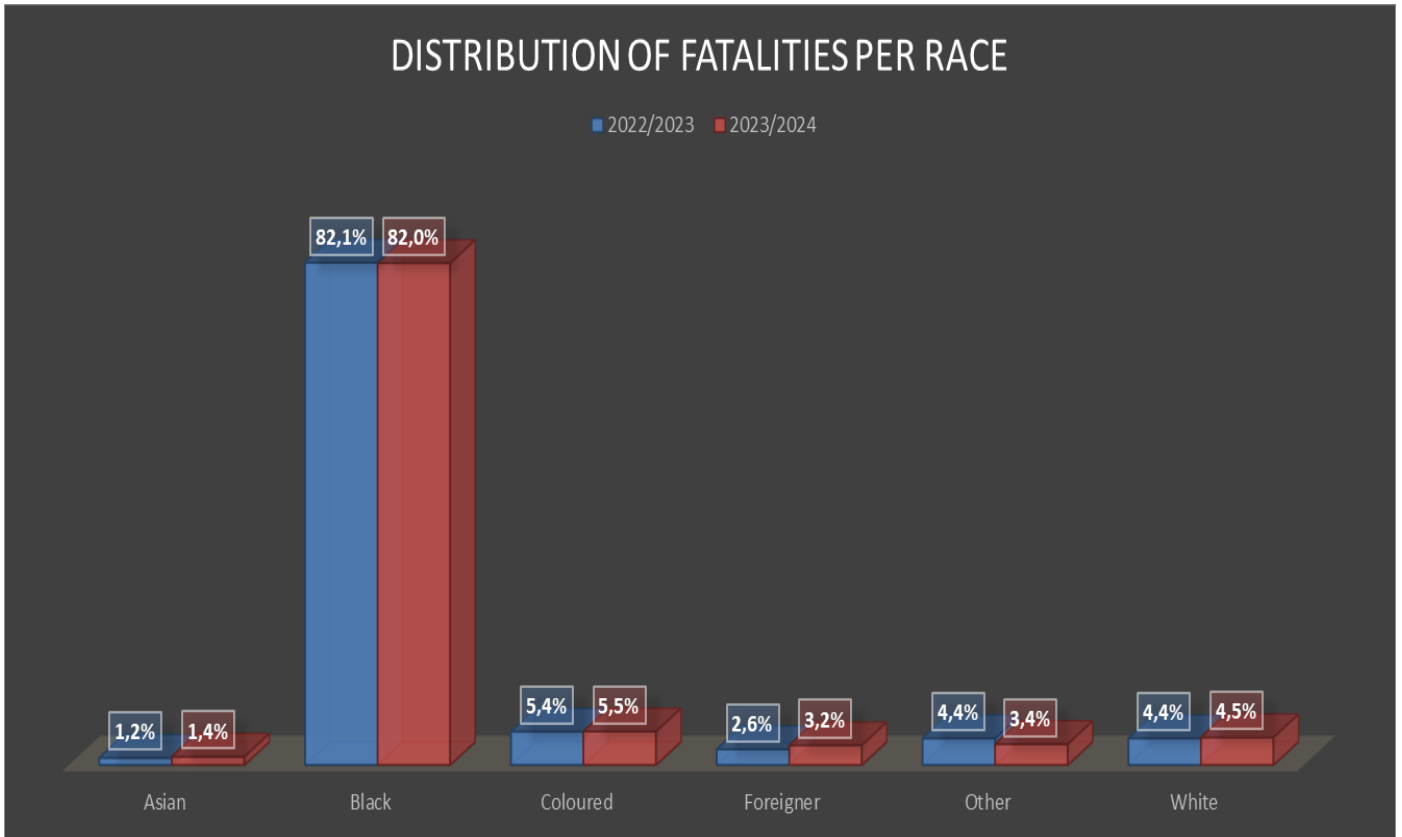


Figure 13: Percentage distribution of fatalities per race

The graph above depicts trends for fatalities per race for the two festive periods. The trend shows that the contributions by blacks remained above 80%.

4.1 Road user group fatalities per age group

The figures below provide information regarding the fatalities per age and per road user group for the period 2022/2023 and 2023/2024 festive period. The information is categorised per road user group (Driver, Passenger, Pedestrian and Cyclists).

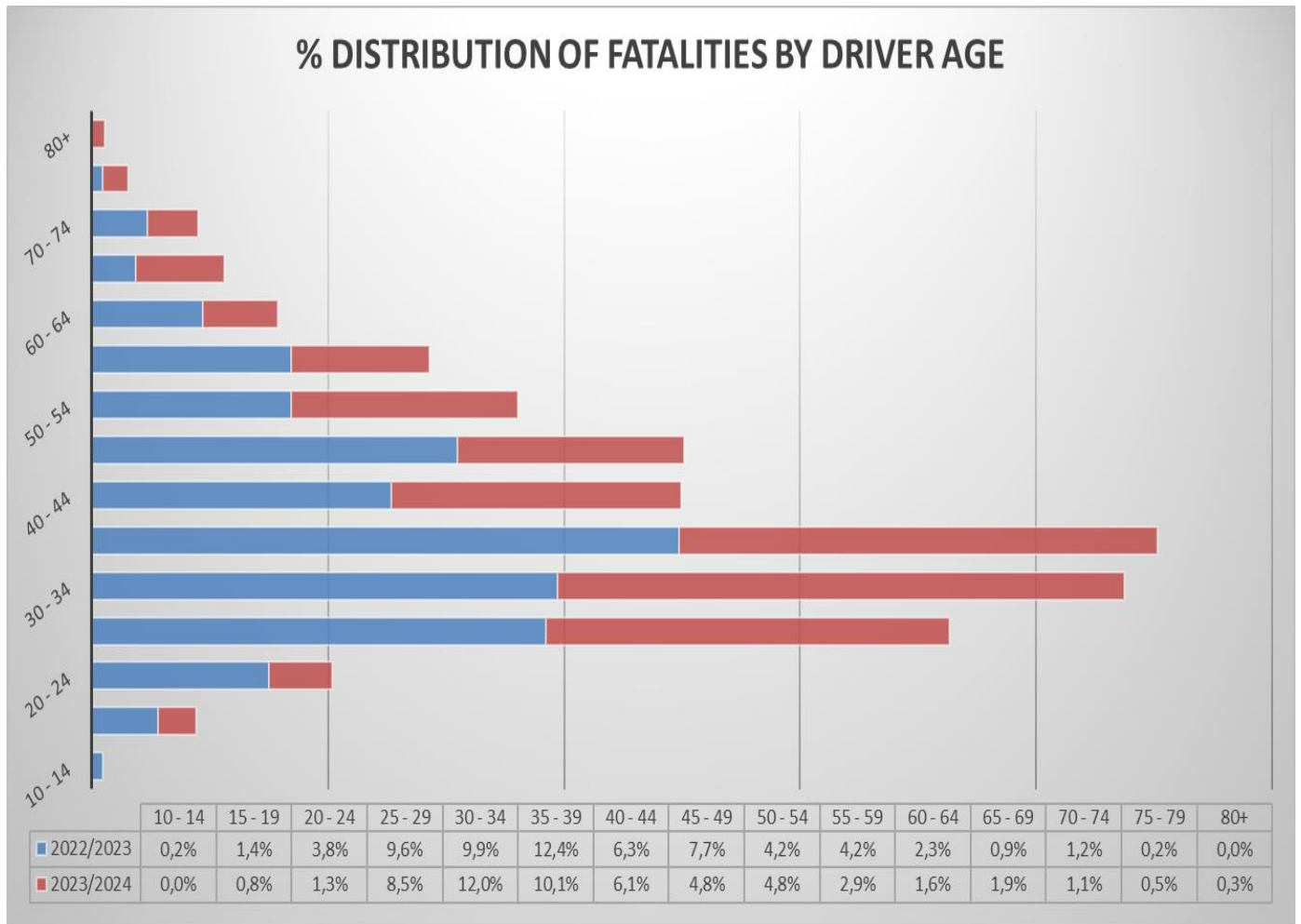


Figure 14: Percentage distribution of fatalities per age for drivers

The figure above shows that the highest fatalities for drivers were recorded in the age range 25 to 39 years during 2023/2024 at 30.7%. Age group 30 to 34 years was the peak age group with a 12.0% contribution.

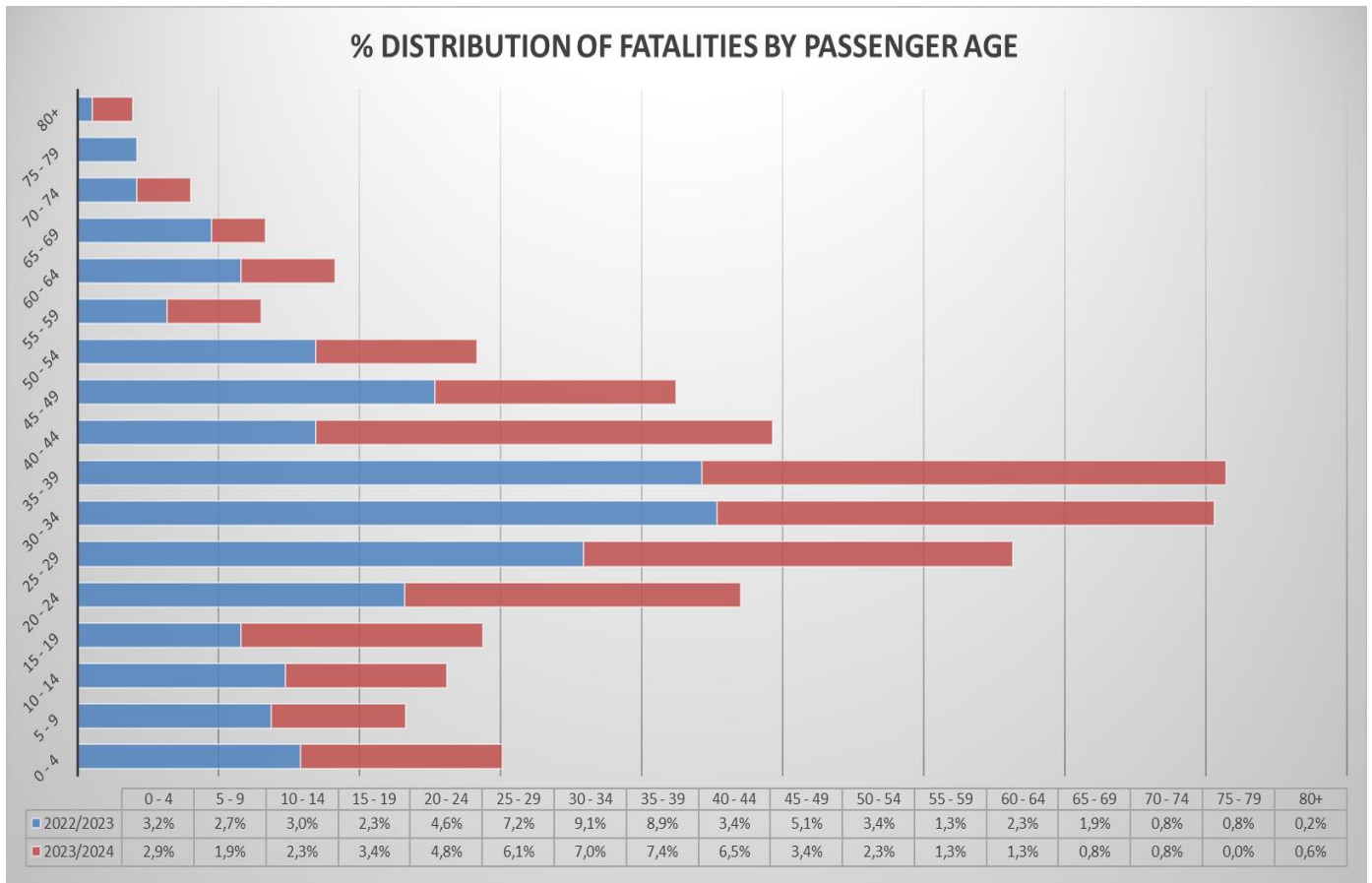


Figure 15: Percentage distribution of fatalities per age for passengers

The figure above indicates that most fatalities for passengers were recorded between age group 25 and 44 years, having the age groups 30 to 34 and 35 to 39 years being the age group with the highest contributions of 7.0% and 7.4% respectively for the period under review.

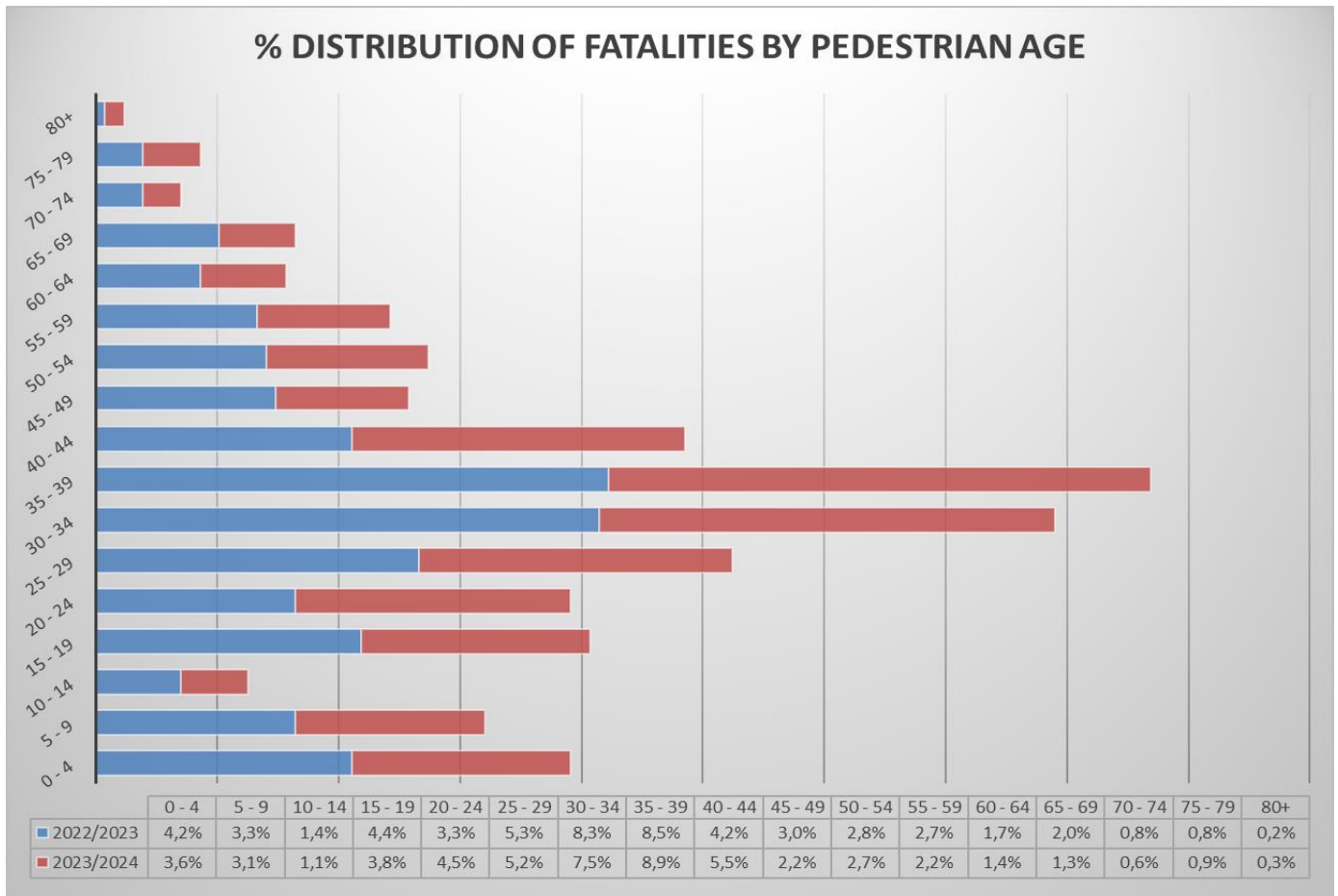


Figure 16: Percentage distribution of fatalities per age for pedestrians

The figure above indicates that most fatalities for pedestrians were recorded in the age groups 30 to 34 and 35 and 39 years. These age groups contributed 16.4% of pedestrian fatalities in 2023/2024 festive season.

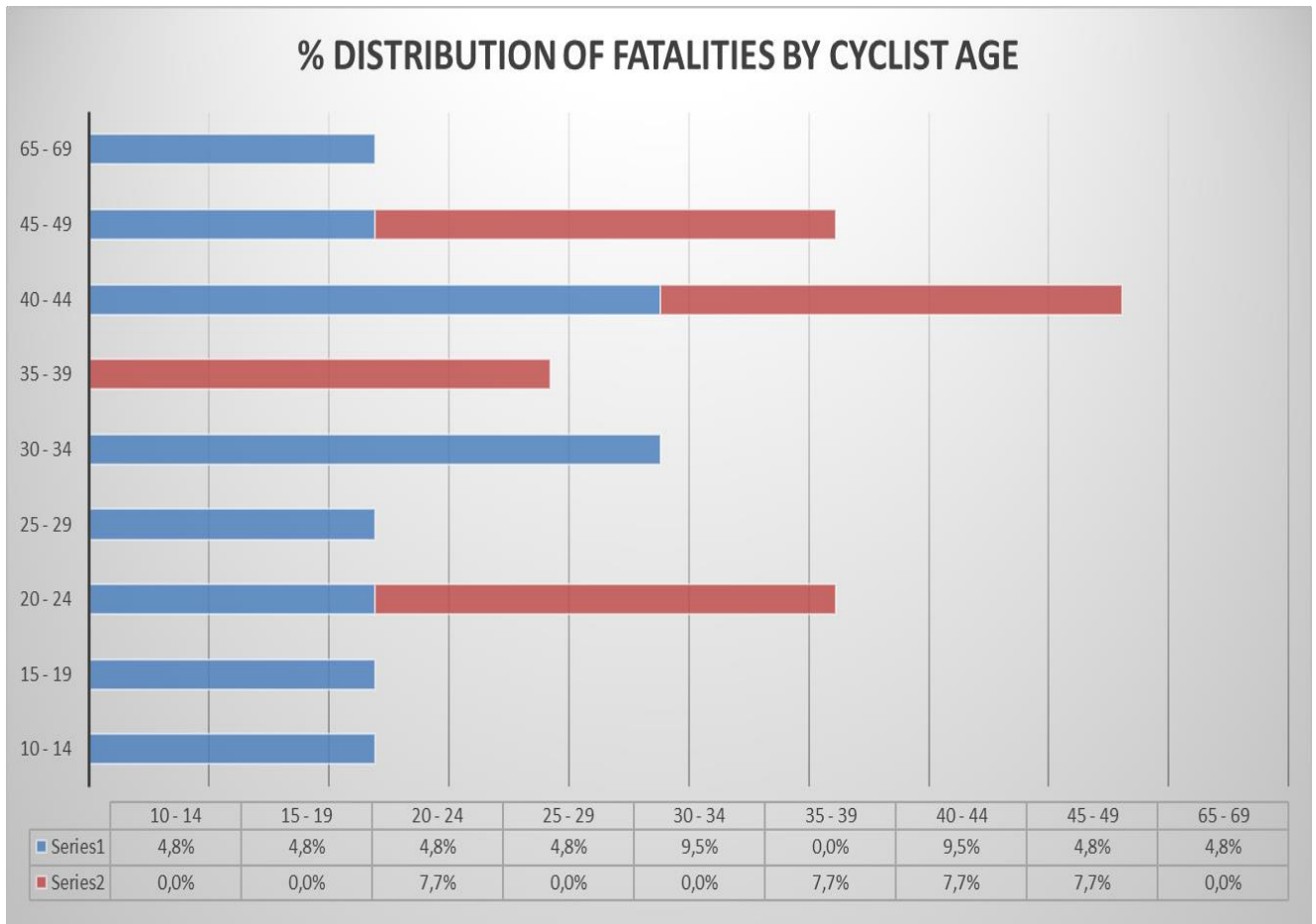


Figure 17: Percentage distribution of fatalities per age for cyclists

The figure above indicates that fatalities for cyclists were evenly distributed between the ages 40-49, 38-39 and 20-24.

SECTION B

5. INTRODUCTION

The section covers vehicle population and human mobility data, as well as driver population. The vehicle population data will encompass the number of registered vehicles inclusive of the status of their roadworthiness and licencing, as well as human mobility in terms of the number of persons per vehicle. The driver population data covers the number of registered drivers including the status and categories of licences.

6. VEHICLE POPULATION

The number of registered vehicles increased by 168 605 (1.30%) from 12 964 430 in December 2022 to 13 133 035 vehicles in December 2023. Detail per type of vehicle is given in table below.

Number of Registered Vehicles	Number registered Dec-22	Number registered Dec-23	Change	% Change	% of Group Dec-22	% of Total Dec-23
Motorised Vehicles						
Motorcars	7 685 153	7 794 164	109 011	1,42%	65,58%	59,35%
Minibuses	349 335	355 235	5 900	1,69%	2,99%	2,70%
Buses	64 170	64 982	812	1,27%	0,55%	0,49%
Motorcycles	346 153	349 215	3 062	0,88%	2,94%	2,66%
LDV's - Bakkies	2 658 416	2 689 310	30 894	1,16%	22,63%	20,48%
Trucks	385 845	392 349	6 504	1,69%	3,30%	2,99%
Other & Unknown	237 199	238 955	1 756	0,74%	2,01%	1,82%
Total Motorised	11 726 271	11 884 210	157 939	1,35%	100,00%	90,49%
Towed Vehicles						
Caravans	95 885	95 010	(875)	-0,91%	81,54%	0,72%
Heavy Trailers	224 580	234 448	9 868	4,39%	201,20%	1,79%
Light Trailers	889 977	892 070	2 093	0,24%	765,55%	6,79%
Other & Unknown	27 717	27 297	(420)	-1,52%	23,43%	0,21%
Total Towed	1 238 159	1 248 825	10 666	0,86%	1071,71%	9,51%
All Vehicles	12 964 430	13 133 035	168 605	1,30%		100,00%

Table 3: Number of registered vehicles per type

The table above shows that all vehicles increased except Caravans.

The total motor vehicle population per province for December 2022 and December 2023 is given in table below and the vehicle population percentage growth is reflected in the figure below.

Number of Registered Vehicles per Province	Number registered	Number registered	Change	%	% of Total
	Dec-22	Dec-23		Change	Dec-23
GP	4 969 400	5 039 485	70 085	1,41%	38,37%
KZN	1 739 686	1 763 284	23 598	1,36%	13,43%
WC	2 104 157	2 142 628	38 471	1,83%	16,31%
EC	856 465	859 167	2 702	0,32%	6,54%
FS	644 766	648 667	3 901	0,61%	4,94%
MP	920 320	928 611	8 291	0,90%	7,07%
NW	660 140	665 967	5 827	0,88%	5,07%
LP	776 163	789 859	13 696	1,76%	6,01%
NC	293 333	295 367	2 034	0,69%	2,25%
RSA	12 964 430	13 133 035	168 605	1,30%	100,00%

Table 4: Number of registered vehicles per province

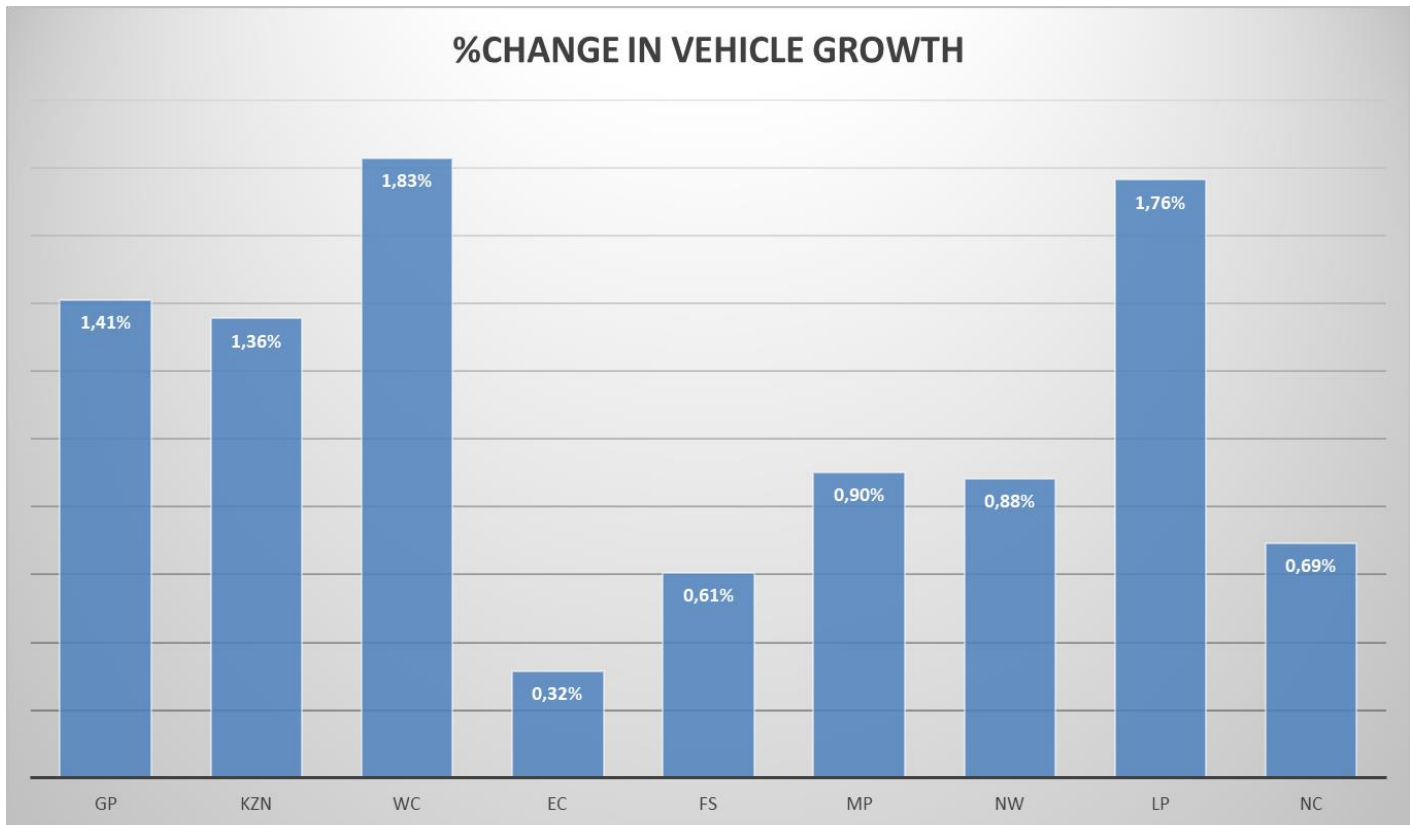


Figure 18: Percentage Annual Growth in Vehicle Population

The percentage vehicles registered per province as at 31 December 2023 is reflected in the figure below.

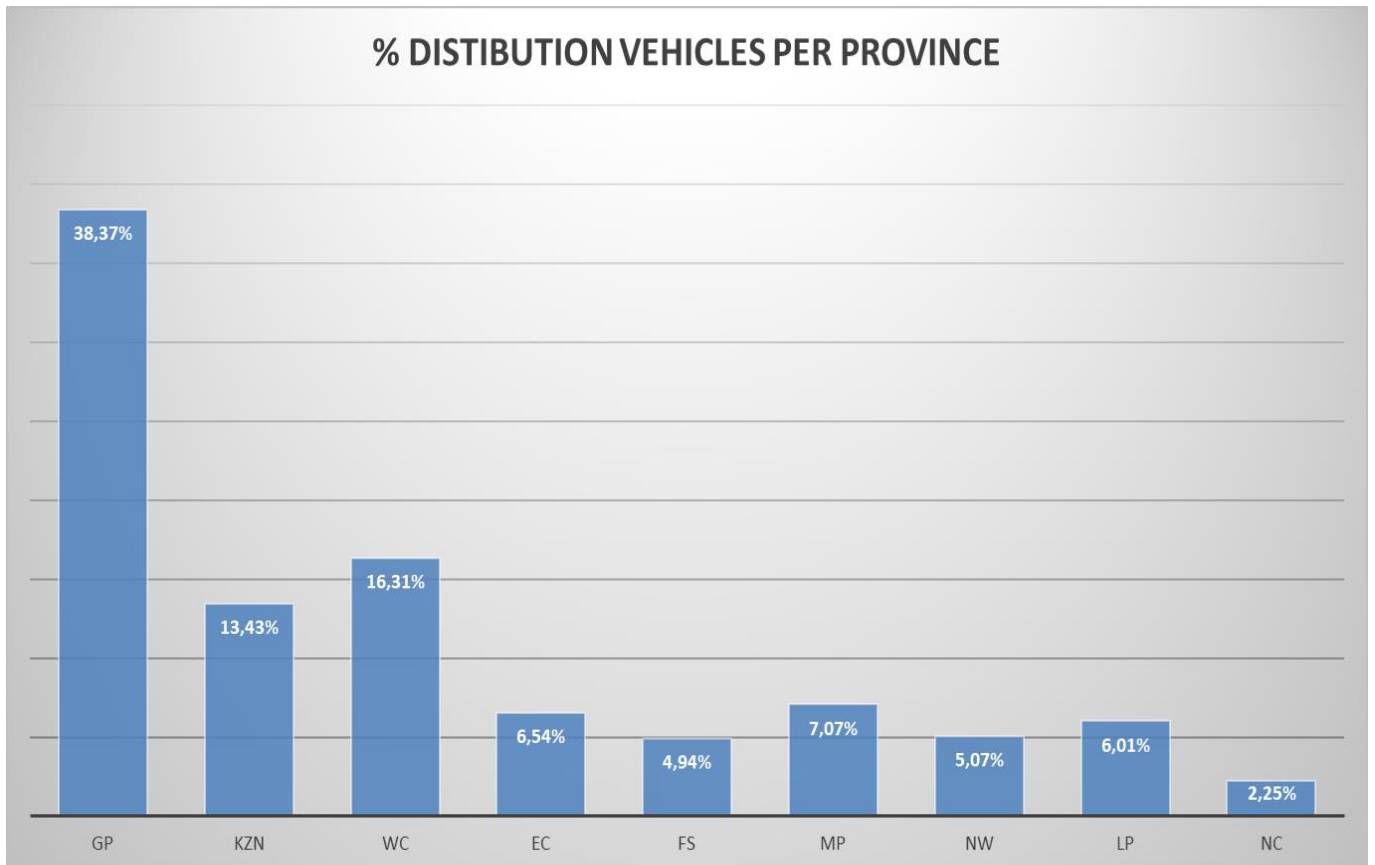


Figure 19: Percentage Vehicle Registered per province

The information in the figure above shows that 38.37% of vehicle's population were registered in Gauteng, 16.31% in Western Cape and 13.43% in KwaZulu-Natal. 68.11% of all registered vehicles in the country are registered in these three provinces.

7. DRIVER POPULATION

7.1 Learner Driving Licences

The number of learner driving licences issued increased by 10 260 (6.02%) from 1 089 694 in December 2022 to 1 099 954 in December 2023. Details on the number of learner driving licences issued per category is given in table below and graphically reflected in the figure below.

Number of Learner Licences Issued				
Category	Dec-22	Dec-23	Change	% Change
1	40 197	42 143	1 946	4,84%
2	199 256	199 792	536	0,27%
3	850 241	858 019	7 778	0,91%
Total	1 089 694	1 099 954	10 260	6,02%

Table 5: Number of learner licences issued

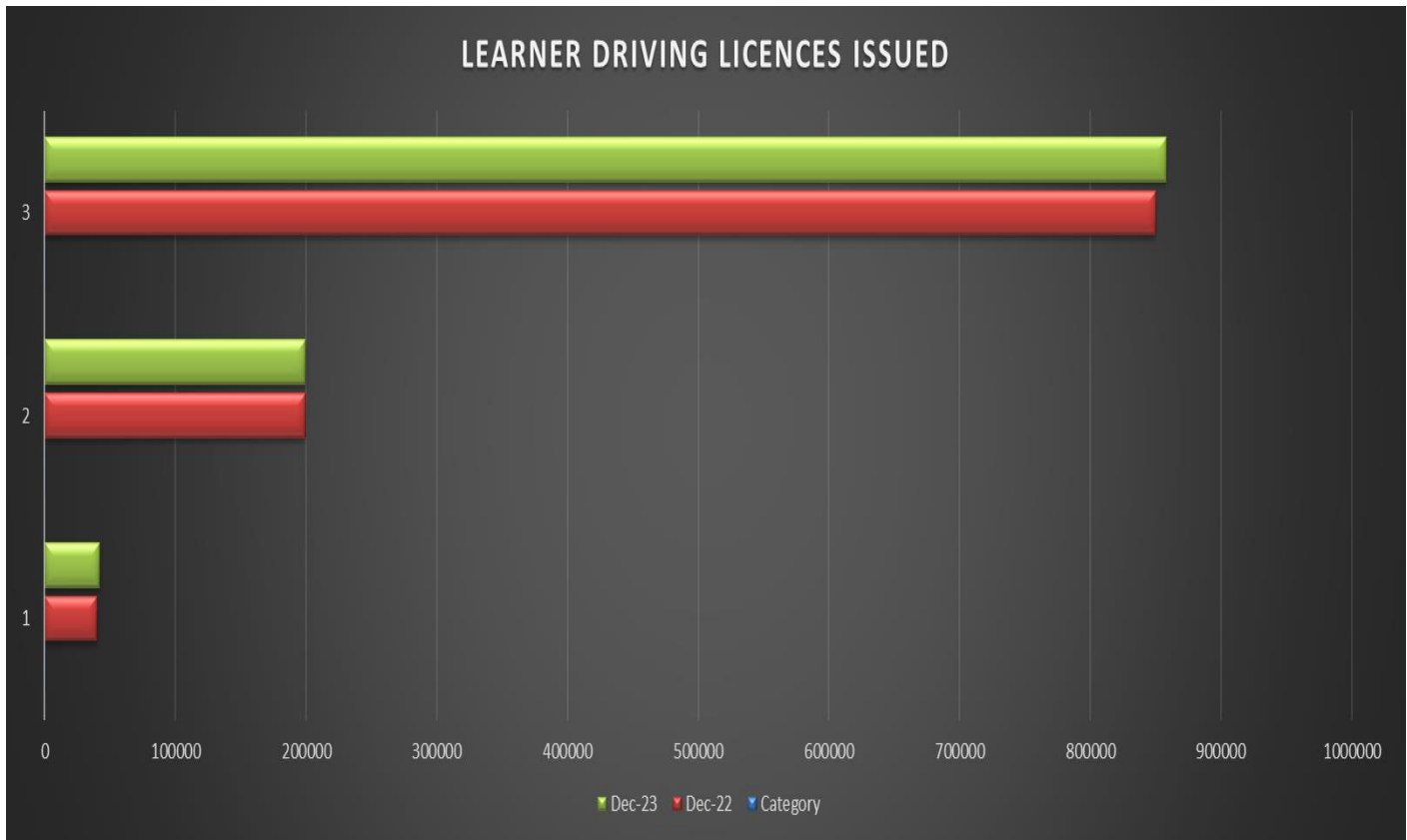


Figure 20: Number of learner license issued

The table below shows the number and percentage change per Province of learner licences issued.

Number of Learners Licences Issued per Province										
Year	GA	KZ	WC	EC	FS	MP	NW	LP	NC	RSA
Dec-22	340 863	204 795	172 975	56 736	50 751	94 664	53 315	93 719	21 876	1 089 694
Dec-23	371 578	196 617	180 884	52 838	49 624	84 454	46 873	95 675	21 411	1 099 954
Change	30 715	-8 178	7 909	-3 898	-1 127	-10 210	-6 442	1 956	-465	10 260
% Change	9,01%	-3,99%	4,57%	-6,87%	-2,22%	-10,79%	-12,08%	2,09%	-2,13%	0,94%

Table 6: Number of learner licences issued per province

Gauteng, Western Cape and Limpopo had increased in the number of learner licences issued for the period under review. The highest increase learner licences issued was Gauteng at 9.01%.

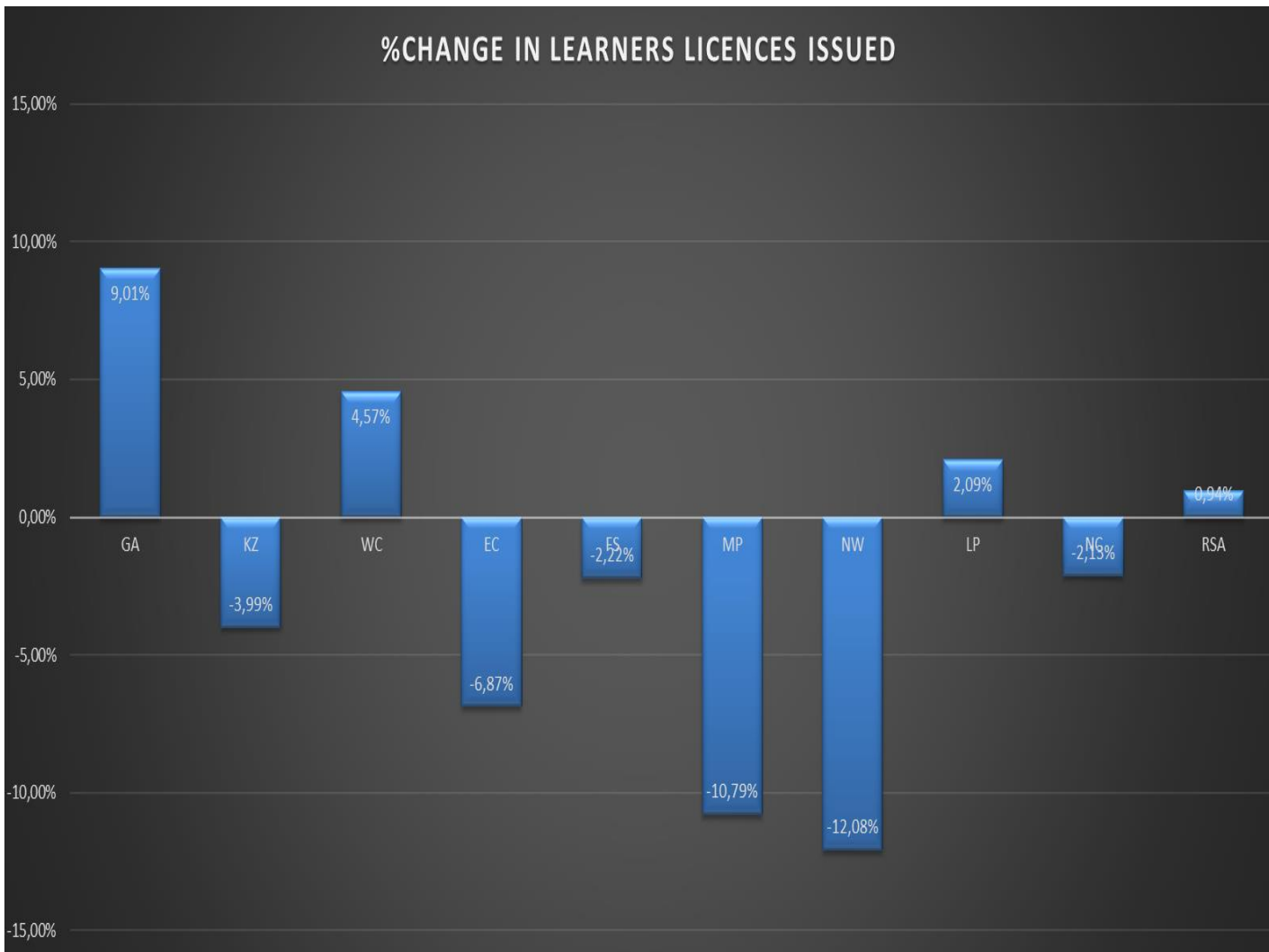


Figure 21: Percentage change in learner licences issued per province

7.2 Driving Licences Issued

The number of driving licences issued increased by 478 969 (3.22%) from 14 897 525 in December 2022 to 15 376 494 in December 2023. Details on the number of driving licences issued per category is given in table and graphically presented below.

Number of Driving Licences Issued				
Category	Dec-22	Dec-23	Change	% Change
A	512 280	519 529	7 249	1,42%
A1	122 452	122 352	(100)	-0,08%
B	3 362 380	3 461 187	98 807	2,94%
C	25 338	25 699	361	1,42%
C1	5 371 227	5 680 724	309 497	5,76%
EB	3 650 806	3 653 597	2 791	0,08%
EC	1 271 121	1 332 301	61 180	4,81%
EC1	581 921	581 105	(816)	-0,14%
Total	14 897 525	15 376 494	478 969	3,22%

Table 7: Number of driving licences issued

Driving licences:

A	Motorcycle > 125 cub.cm	A1	Motorcycle < 125 cub.cm	B	Motor vehicle < 3,5000 kg
C	Motor vehicle > 16,000 kg	C1	Motor vehicle 3,500 - 16,000 kg	EB	Articulated motor vehicle <16,000 kg
		EC	Articulated vehicle > 16,000 kg	EC1	Articulated vehicle 3,500 - 16,000 kg

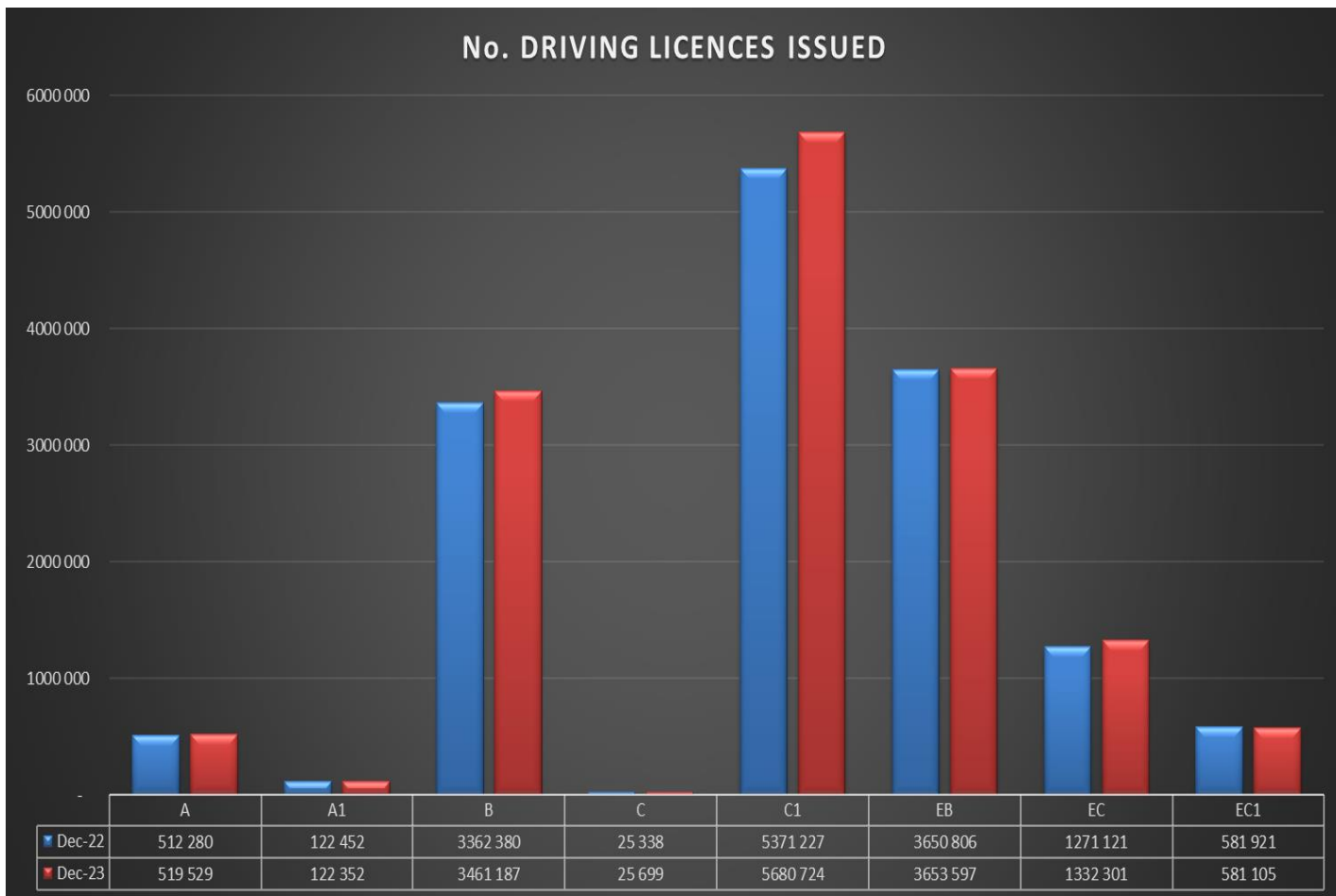


Figure 22: Number of driving licences issued

From the above table the highest percentage change is for Categories C1 with percentage of 5.76%, followed by category EC and B with 4.81% and 2.94% respectively.

The number and percentage of driving licences issued per category at the end of December 2023 is reflected in the table below.

The total number of driving licences issued per province for December 2022 and December 2023 is given in table below and the driving licences issued percentage change is reflected in the figure below.

Number of Driving Licences Issued per Province										
Year	GP	KZN	WC	EC	FS	MP	NW	LP	NC	RSA
Dec-22	5 214 392	2 393 808	2 222 888	1 078 480	716 713	1 129 764	696 195	1 169 934	275 351	14 897 525
Dec-23	5 401 457	2 475 440	2 289 006	1 100 245	731 035	1 168 683	714 896	1 213 927	281 805	15 376 494
Change	187 065	81 632	66 118	21 765	14 322	38 919	18 701	43 993	6 454	478 969
% Change	3,59%	3,41%	2,97%	2,02%	2,00%	3,44%	2,69%	3,76%	2,34%	3,22%

Table 8: Number of driving licences issued per province

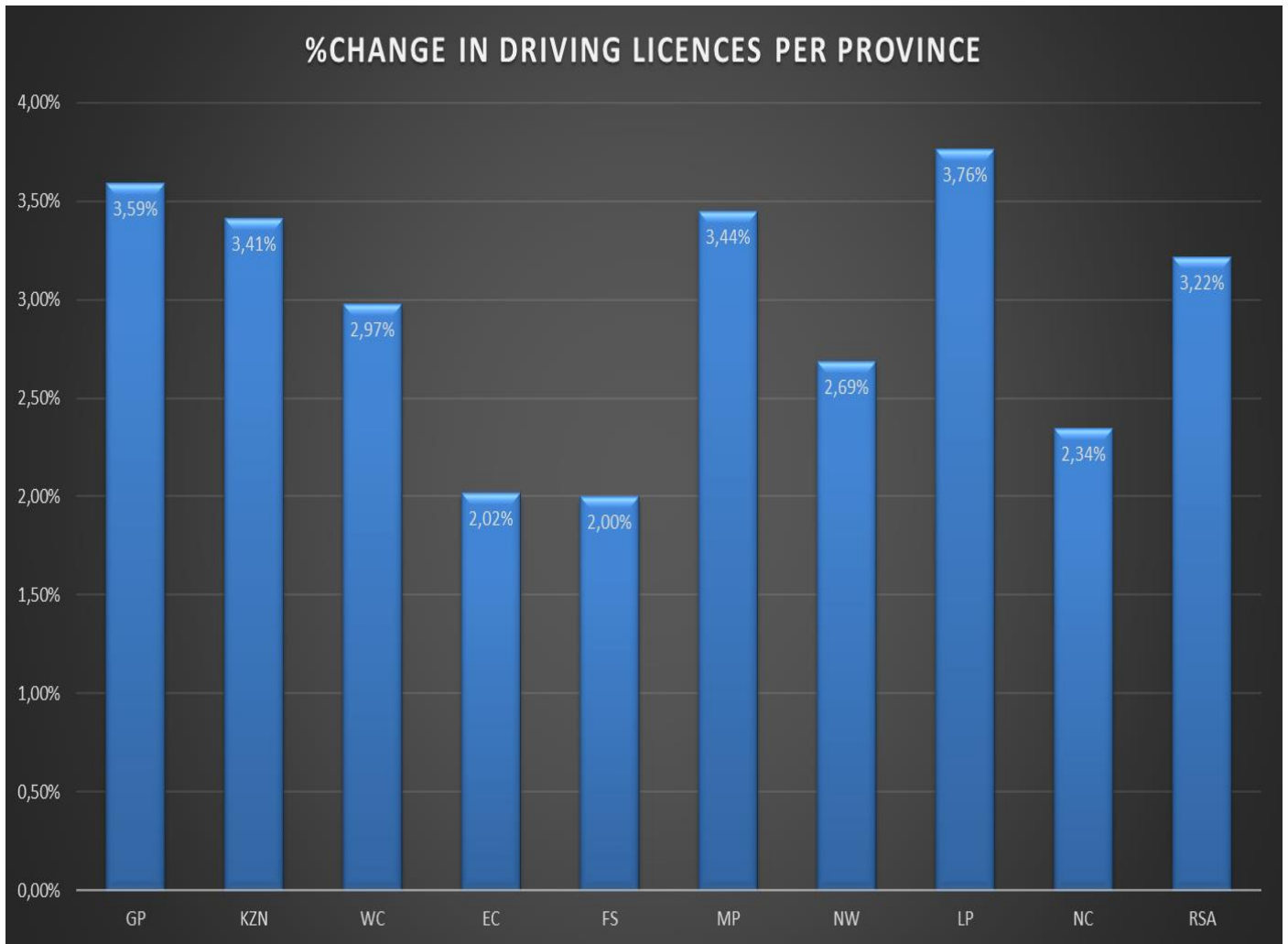


Figure 23: Percentage change in driving licences issued

7.3 Professional Driving Permits Issued

The number of Professional Driving Permits (PrDP's) issued increased by 78 150 (7.11%) from 1 098 837 in December 2022 to 1 176 987 in December 2023. Detail on the number of PrDPs issued per category is given in table below and graphically represented in the figure below.

Number of PrDP's Issued				
Category	Dec-22	Dec-23	Change	% Change
G	6 466	7 008	542	8,38%
P G	1 039 200	1 111 802	72 602	6,99%
D G	158	140	-18	-11,39%
D P G	53 013	58 037	5 024	9,48%
Total	1 098 837	1 176 987	78 150	7,11%

Table 9: Number of PrDP's issued

Professional Driving Permits (PrDPs)

G: Goods

P: Passengers

D: Dangerous goods

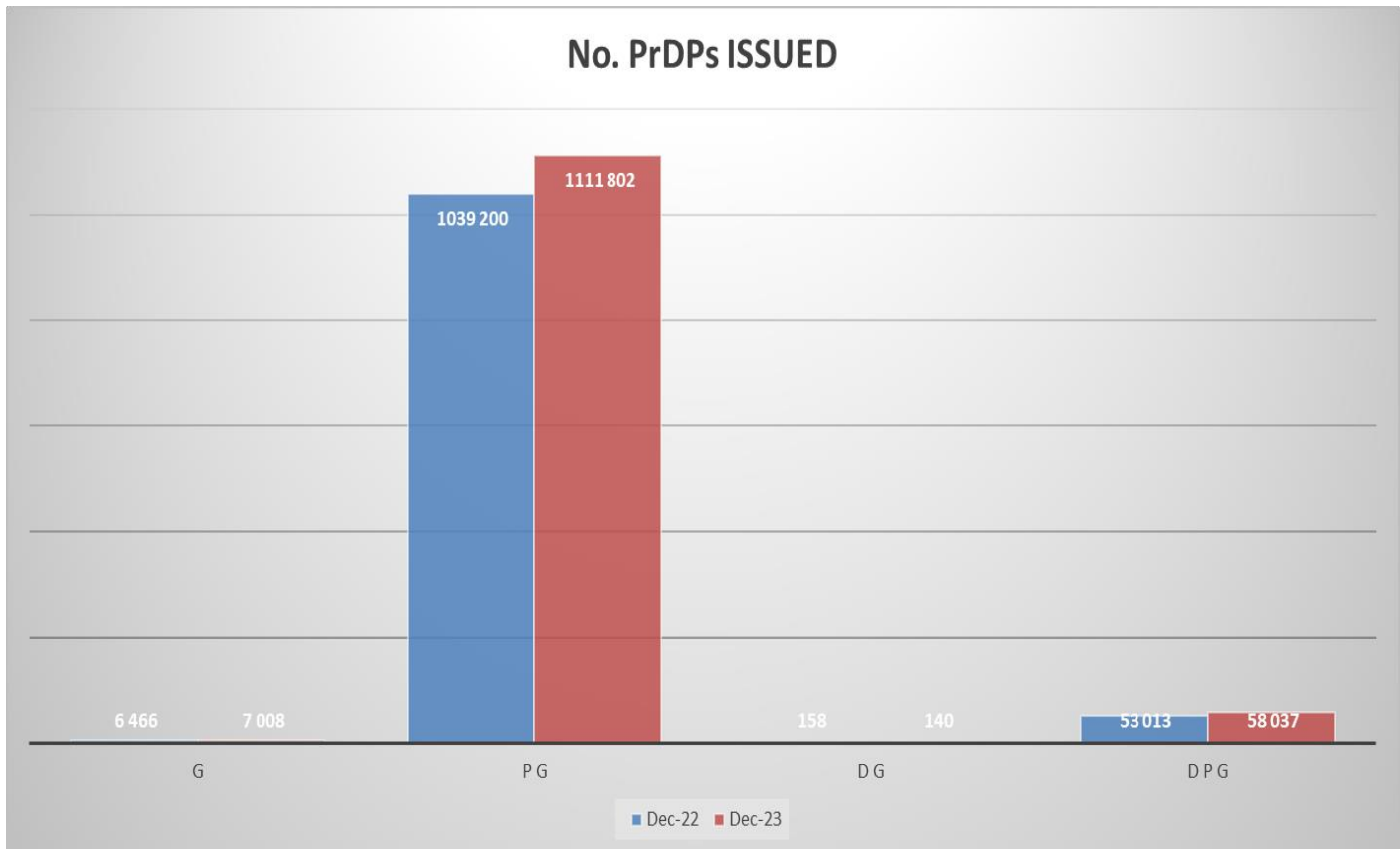


Figure 24: Number of PrDP's issued

The total number of professional driving permits issued per province for December 2022 and December 2023 is given in table below and the professional driving permits issued percentage change is reflected in the figure below.

Number of Professional Driving Permits (PrDP's) Issued per Province										
Year	GP	KZN	WC	EC	FS	MP	NW	LP	NC	RSA
Dec-22	306389	204910	155881	81866	60391	106928	59248	96633	26591	1 098 837
Dec-23	348 819	211 465	164 815	88 431	63 510	107 561	64 028	100 630	27 728	1 176 987
Change	42 430	6 555	8 934	6 565	3 119	633	4 780	3 997	1 137	78 150
% Change	13,85%	3,20%	5,73%	8,02%	5,16%	0,59%	8,07%	4,14%	4,28%	7,11%

Table 10: Number of professional driving permits (PrDP's) issued per province

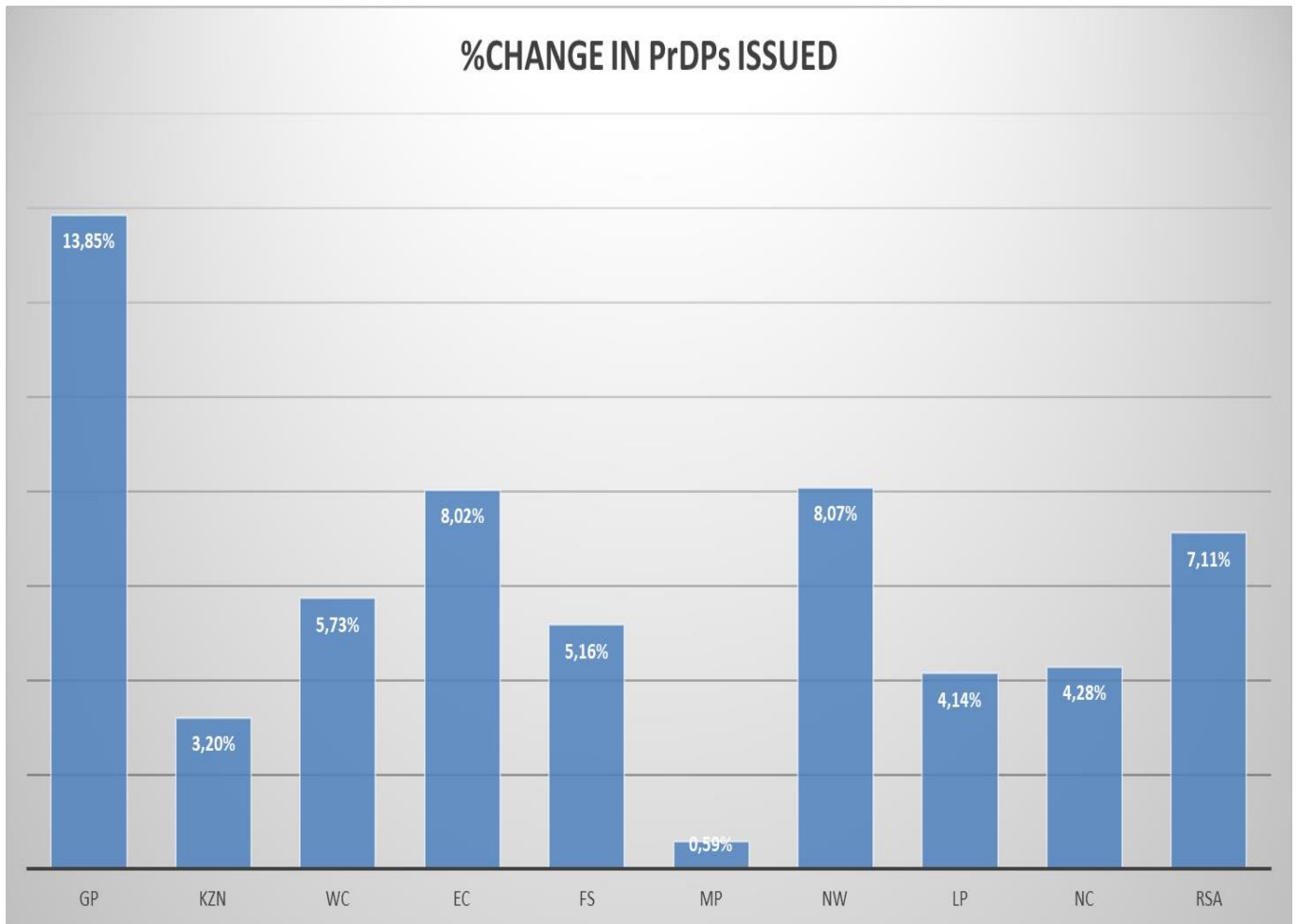


Figure 25: Percentage in PrDP's issued per province

Compiled by

.....

Mr Emmanuel Phasha

General Manager: Road Traffic Information

Date:

Recommended by

.....

Mr Kevin Kara-Vala

Executive Manager: Road Traffic Information & Technology

Date:

Approved by

.....

Advocate Makhosini Msibi

Chief Executive Officer

Date:



Road Traffic Management Corporation
Eco Origin Office Park, Block F
349 Witch-Hazel Street
Highveld Ext 79
Tell: 012 999 5200

.....
Want to know more about the RTMC - visit www.rtmc.co.za