



State of Road Safety Report
July – September 2020



Table of contents

Table of contents	ii
List of Figures	3
List of acronyms and abbreviations	5
1. OBJECTIVE OF THE REPORT	6
2. EXECUTIVE SUMMARY	7
SECTION A	9
1. INTRODUCTION	9
2. METHODOLOGY	9
3. FATAL ROAD CRASH ANALYSIS	11
4. ROAD FATALITIES ANALYSIS	17
5. MAJOR CRASHES	23
SECTION B	32
1. INTRODUCTION	32
2. VEHICLE POPULATION	32

List of Tables

Table 1: Number of fatal crashes per province 2019 and 2020.....	11
Table 2: Comparison of Fatal Crashes per day of week for quarter 2s of 2019 and 2020	12
Table 3: Comparison of fatalities per province for the two quarters of 2019 and 2020	17
Table 4: Number of registered vehicles per type for 2019 and 2020	32
Table 5: Number of registered vehicles per province	33
Table 6: Estimated mid-month human population per province – million	36
Table 7: Average number of persons per vehicle (excluding trucks, other, unknown and towed vehicles).....	36
Table 8: Percentage improvement in mobility per province.....	37
Table 9: Average number of persons per "heavy" passenger transport.....	39
Table 10: Percentage improvement in average number of persons per.....	40
Table 11: Average number of public transport vehicles (buses and minibuses)	41
Table 12: Number of un-roadworthy, un-licenced vehicles or both.....	42
Table 13: Number of vehicles that are un-roadworthy or un-licenced or both	43
Table 14: Number of un-roadworthy vehicles.....	44
Table 15: Number of un-roadworthy vehicles.....	45
Table 16: Number of un-licenced vehicles	48
Table 17: Number of un-licenced vehicles	49
Table 18: Number of learner licences issued	51
Table 19: Number of learners licences issued per province.....	52
Table 20: Number of driving licences issued	53
Table 21: Number and percentage of driving licences issued per category	54
Table 22: Number of driving licences issued per province	55
Table 23: Number of driving licences cards issued and expired per province	56
Table 24: Number of PrDP's issued.....	57
Table 25: Number of professional driving permits (PrDP's) issued per province.....	58

Table 26: Number of professional driving permits (PrDP's) issued and expired per province 2020
..... 59

List of Figures

Figure 1: Percentage distribution of fatal crashes for the two quarters	11
Figure 2: Percentage distribution of fatal crashes per day of week.....	12
Figure 3: Percentage distribution of fatal crashes per time of day for two quarters.....	13
Figure 4: Percentage distribution of fatal crashes per crash type.....	13
Figure 5: Percentage distribution of fatal crashes per vehicle type.....	14
Figure 6: Comparison of contributory factors for 2019 and 2020	15
Figure 7: Percentage distribution of human factors	16
Figure 8: Percentage distribution for vehicle factor	16
Figure 9: Percentage distribution fatalities per province in 2019 and 2020.....	17
Figure 10: Percentage distribution of fatalities per road user	18
Figure 11: Percentage distribution of fatalities per gender.....	18
Figure 12: Percentage distribution of fatalities per race	19
Figure 13: Percentage distribution of fatalities per age for drivers	20
Figure 14: Percentage distribution of fatalities per age for passengers	21
Figure 15: Percentage distribution of fatalities per age for pedestrians	21
Figure 16: Percentage distribution of fatalities per age for cyclists.....	22
Figure 17: Comparison of major crashes, fatalities and injuries.....	23
Figure 18: Provincial comparison of major crashes for the two quarters	24
Figure 19: Major Crashes per crash type	24
Figure 20: Vehicles involved in major crashes.....	25
Figure 21: Percentage Annual Growth in Vehicles	33
Figure 22: Percentage Annual Growth in Vehicle Population.....	34
Figure 23: Percentage Annual Growth in Vehicle Population.....	34
Figure 24: Percentage Vehicles Registered per Province.....	35
Figure 25: Average number of persons per vehicle (excluding trucks,	37
Figure 26: Percentage improvement in mobility of persons	38

Figure 27: Average number of persons per " heavy vehicles" (buses and minibuses)	39
Figure 28: Number of buses and minibuses / 10,000 human population	41
Figure 29: Percentage change in number of vehicles un-roadworthy or un-licensed or both	43
Figure 30: Percentage of un-roadworthy vehicles	45
Figure 31: Percentage change in number of vehicles that are un-roadworthy	46
Figure 32: Percentage of un-roadworthy vehicles	47
Figure 33: Percentage of un-licenced vehicles	49
Figure 34: Percentage change in number of vehicle that are un-licensed	50
Figure 35: Percentage of un-licensed vehicles	50
Figure 36: Number of learner licenses issues	51
Figure 37: Percentage change in learner licenses issued per province	52
Figure 38: Number of driving licenses issued	54
Figure 39: Percentage change in driving licenses issued	55
Figure 40: Percentage expired driving license cards	56
Figure 41: Number of PrDP's issued	57
Figure 42: Percentage in PrDP's issued	58
Figure 43: Percentage expired professional driving permits	59

List of acronyms and abbreviations

CHOCOR	:	CULPABLE HOMICIDE CRIME: OBSERVATION REPORT
EC	:	EASTERN CAPE
GA	:	GAUTENG
FS	:	FREE STATE
LI	:	LIMPOPO
MP	:	MPUMALANGA
NC	:	NORTHERN CAPE
NW	:	NORTH WEST
WC	:	WESTERN CAPE
KZN	:	KWAZULU NATAL
SAPS	:	SOUTH AFRICAN POLICE SERVICE
NATIS	:	ELECTRONIC NATIONAL TRAFFIC INFORMATION SYSTEM
NREP	:	NATIONAL ROLLOUT ENFORCEMENT PLAN

1. OBJECTIVE OF THE REPORT

This report is aimed at achieving the following objectives:

- To provide road traffic fatal crashes and fatalities statistics based on the Culpable Homicide Crash: Observation Report (CHoCOR) Forms; and
- To present statistics on registered vehicles, un-roadworthy vehicles, un-licenced vehicles, driving licence and professional driving permits issued.

2. EXECUTIVE SUMMARY

The purpose of the report is to provide final road crash statistics for the period July – September 2020. The performance is provided below.

Road Crashes Data

A total number of 2 561 fatalities were recorded for the period between July – September 2020 from 2 157 fatal crashes. As a result there was a decrease of 2.5% fatalities from 2019 to 2020. The most affected road user group during 2020 was the pedestrians. However, passengers recorded a slight decrease of 2% from 31% to 29%.

A total number of eighteen (18) major crashes were reported and investigated for the period under review. One-hundred and twelve (112) persons were killed and thirty-nine (39) persons sustained injuries in these major crashes.

Vehicle and driver population

The number of registered vehicles increased by 10 340 (0.08%) from 12 703 720 on 30 September 2019 to 12 714 060 vehicles as at 30 September 2020.

On a national basis the total number of vehicles that are either un-roadworthy, un-licenced or both increased by 916 726 (82.39%) from 1 112 722 vehicles as on 30 September 2018 to 2 029 448 vehicles as on 30 September 2020.

The number of learner driving licences issued decreased by 225 601(19.04%) from 1 184 713 as at 30 September 2019 to 959 112 as at 30 September 2020.

The number of driving licences issued increased by 364 178 (2.71%) from 13 423 683 as at 30 September 2019 to 13 787 861 as of 30 September 2020.

SECTION A

1. INTRODUCTION

This report is based on information about fatal crashes that were reported to police stations between July and September 2019 and 2020 using the CHoCOR Form. In addition, the report includes information about registered vehicles, un-roadworthy and un-licenced vehicles, driving licence and professional driving permits issued from the National Traffic Information System (NaTIS). Furthermore, it includes information about population growth using the 2020 mid-year population estimates from Statistics South Africa (Stats SA).

2. METHODOLOGY

2.1 Road crash data collection methodology

The Culpable Homicide Crash Observation Report (CHoCOR) form is utilised to collect fatal road crash data on daily basis. South African Police Service (SAPS) is the primary source of the fatal crash data. SAPS provide the Corporation with a list of all recorded fatal crashes (CAS list) and further to this, the Corporation receive the CHoCOR forms from various police stations. Road Traffic Management Corporation captures, processes and verifies the data to compile a report.

2.2 Crash Data Flow

The data is collected through the CHoCOR forms which are submitted to the Corporation either by fax, email or through the phone.

2.3 Data processing

The data is captured and verified for compilation of the consolidated statistical report. There is a continuous engagement with provinces for validation purpose.

2.4 Limitations

The road traffic information contained in the report is based mainly on the fatal crashes only. There is still a need for in-depth research to be conducted to collect scientific base facts to complement the administrative data.

2.5 Sample

Sampling is not applicable for fatal crashes routine or administrative data as the data is collected as they occurred within the country from all nine (9) provinces.

2.6 Instruments

The Culpable Homicide Crash Observation Report (CHoCOR) forms are being used by Road Traffic Information unit to record fatal road crash data on daily basis.

3. FATAL ROAD CRASH ANALYSIS

The section covers the data in relation to fatal road crashes, which encompasses the number of fatal crashes and fatalities, contributory factors, fatality information per road user group and major crashes.

3.1 Number of fatal crashes

The table below provides a comparison between two quarters. There was a decrease of 21 (1%) fatal crashes from 2 178 to 2 157 in comparison to quarter 2 of 2019 and 2020. However, on a provincial level six (6) provinces recorded a decrease in this regard with the exception of Gauteng, KwaZulu- Natal and North West. The highest decrease was recorded for Northern Cape with 33.8% followed by Eastern Cape with 26.1%.

Number of Fatal Crashes per Province										
Year	EC	FS	GP	KZN	LI	MP	NC	NW	WC	RSA
2019	353	156	373	338	297	254	80	144	183	2 178
2020	261	124	407	478	237	232	53	183	182	2 157
change	-92	-32	34	140	-60	-22	-27	39	-1	-21
% change	-26,1	-20,5	9,1	41,4	-20,2	-8,7	-33,8	27,1	-0,5	-1,0

Table 1: Number of fatal crashes per province 2019 and 2020

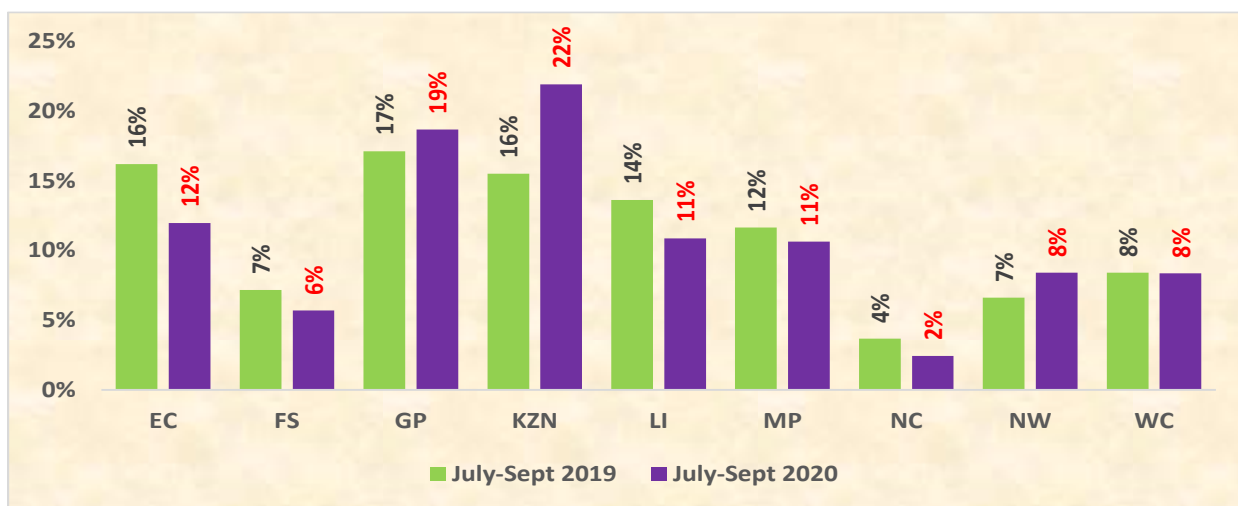


Figure 1: Percentage distribution of fatal crashes for the two quarters

3.1.1 Fatal Crashes per Day of Week

The details of the fatal crashes per day of the week is given in the table below. Friday, Saturday and Sunday remain the most affected day of the week by fatal crashes for both 2019 and 2020. Friday and Saturday contributed 20% and more during the second quarter of 2020.

Quarter 2	Sun	Mon	Tue	Wed	Thurs	Fri	Sat
Jul-Sept 2019	23%	12%	8%	8%	9%	15%	26%
Jul-Sept 2020	11%	10%	11%	12%	16%	20%	20%

Table 2: Comparison of Fatal Crashes per day of week for quarter 2s of 2019 and 2020

The percentage of fatal crashes per day of the week for the period under review is reflected in the figure below.

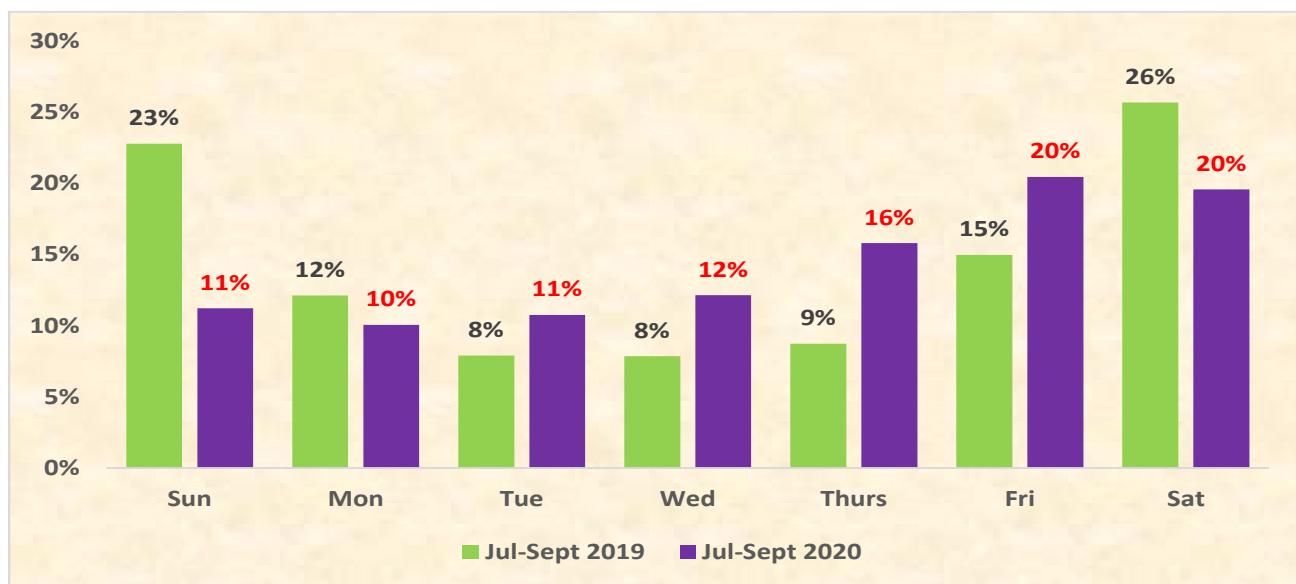


Figure 2: Percentage distribution of fatal crashes per day of week

3.1.2 Fatal Crashes per time of day

The percentage of fatal crashes per time of day for the period under review is reflected in the figure below.

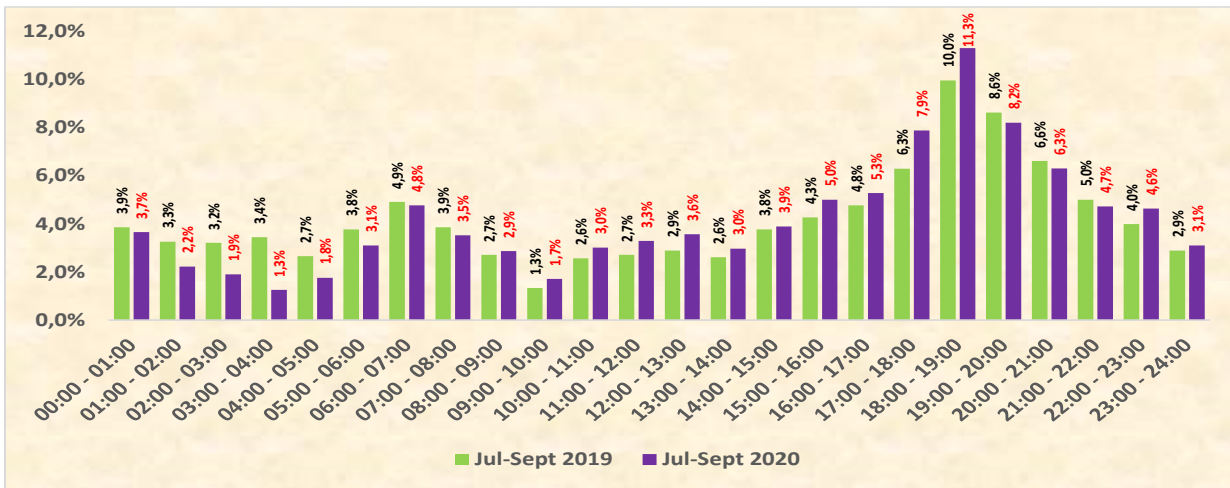


Figure 3: Percentage distribution of fatal crashes per time of day for two quarters 2019 and 2020

The figure above depicts a comparison between fatal crashes per time of day comparing quarter 2s of 2019 and 2020. In comparison, slot 18:00 to 19:00 remained the highest with more than 11% with a slight increase of 1.3% compared to the previous year. A downward trend was observed for slots 19:00 to 22:00.

3.1.3 Fatal crashes per crash type

The percentage contribution of fatal crashes per crash type is reflected in the figure below.

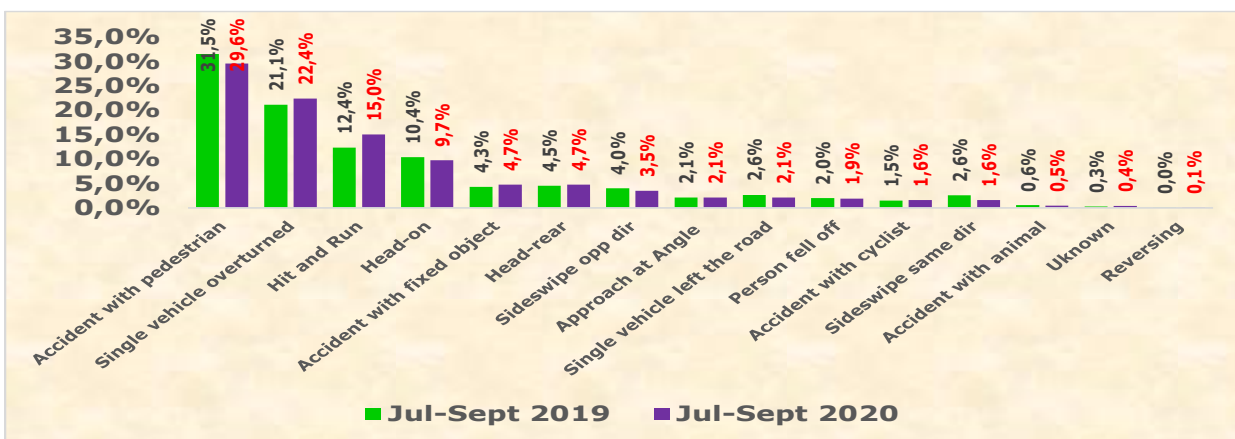


Figure 4: Percentage distribution of fatal crashes per crash type

The figure above depicts that most crashes occurred due to crashes with pedestrians and single vehicle overturned. A contribution of 31.5% for 2019 was recorded for fatal crashes involving pedestrians and 29.6% in 2020 of which shows a decrease of 1.9%. Followed by single vehicle overturned with a contribution of 21.1% in 2019 and 22.4% for 2020, of which shows an increase of 1.3%.

3.1.4 Fatal crashes per vehicle type

The percentage contribution of various vehicles involved in the fatal crashes are reflected in the figure below.

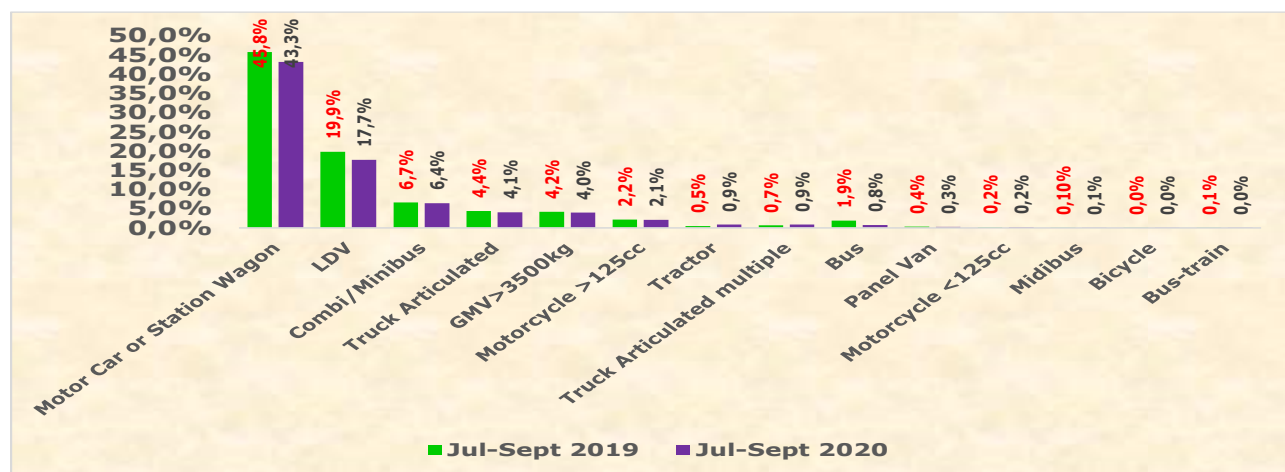


Figure 5: Percentage distribution of fatal crashes per vehicle type

The vehicle types that contributed the highest to fatal crashes were motorcars and LDV's with contributions of 43.3% and 17.7% respectively during 2020. The two vehicle types may contribute to high number of fatalities for passengers.

3.2 Contributory factors

The contributory factors for fatal road crashes are determined as follows: human factors (defined as a stable, general human abilities and limitations that are valid for all users regardless); vehicle factors (are more focussed on the vehicle itself and they cover issues around mechanical failures; and environment (include limited visibility, poorly marked roads, missing road signs, sudden changes in road infrastructure, gravel road, the state of the road and weather conditions).

The fatal crashes for July - September 2020 showed that human factors contributed 88% to the occurrence of fatal crashes followed by roads and environmental factors at 7%; and vehicle factors with a contribution of 5%.

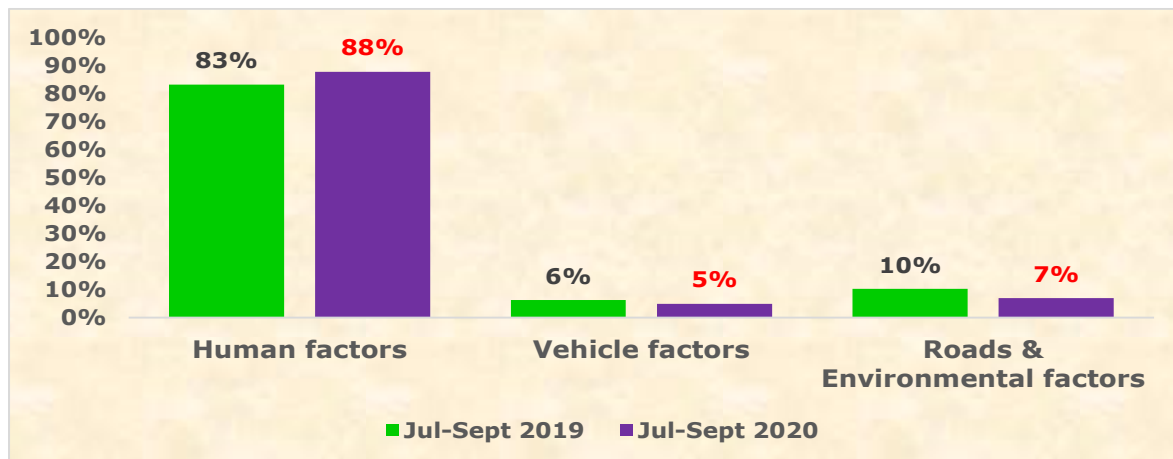


Figure 6: Comparison of contributory factors for 2019 and 2020

The figure above depicts trends for contributory factors for the two quarters. The human factors remain a challenge compared to other factors.

There was an increase of 5% for human factors and a decrease of 3% for roads and environmental factors and vehicles factors a decrease of 1%.

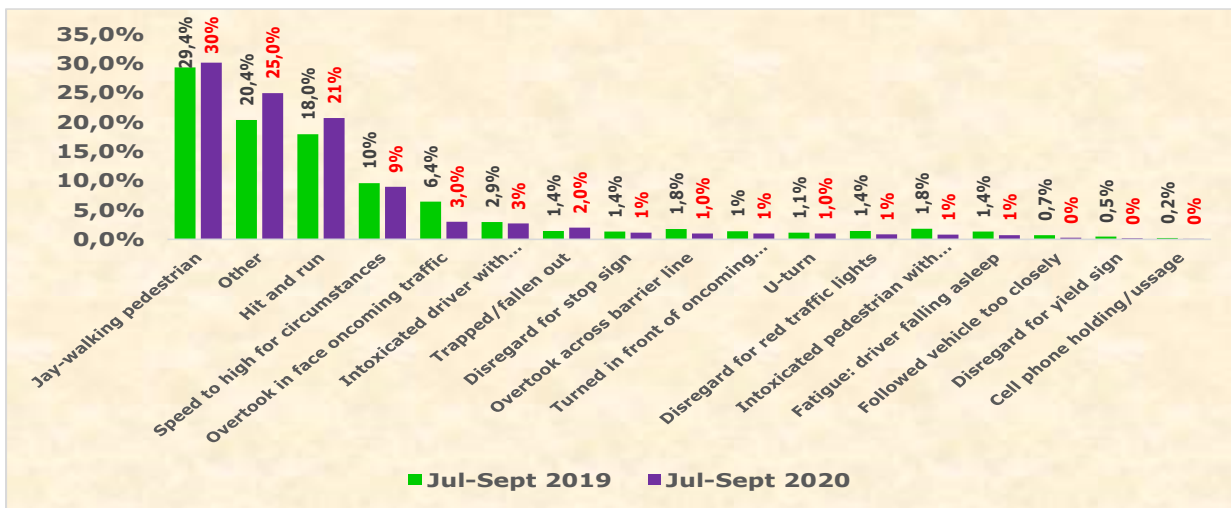


Figure 7: Percentage distribution of human factors

The figure above shows that jay-walking contributed 30% to the occurrence of fatal crashes, followed by hit and run and speeding with 21% and 9% respectively during 2020. Jay-walking and hit and run as depicted above correlate to a high number of fatalities for pedestrians.

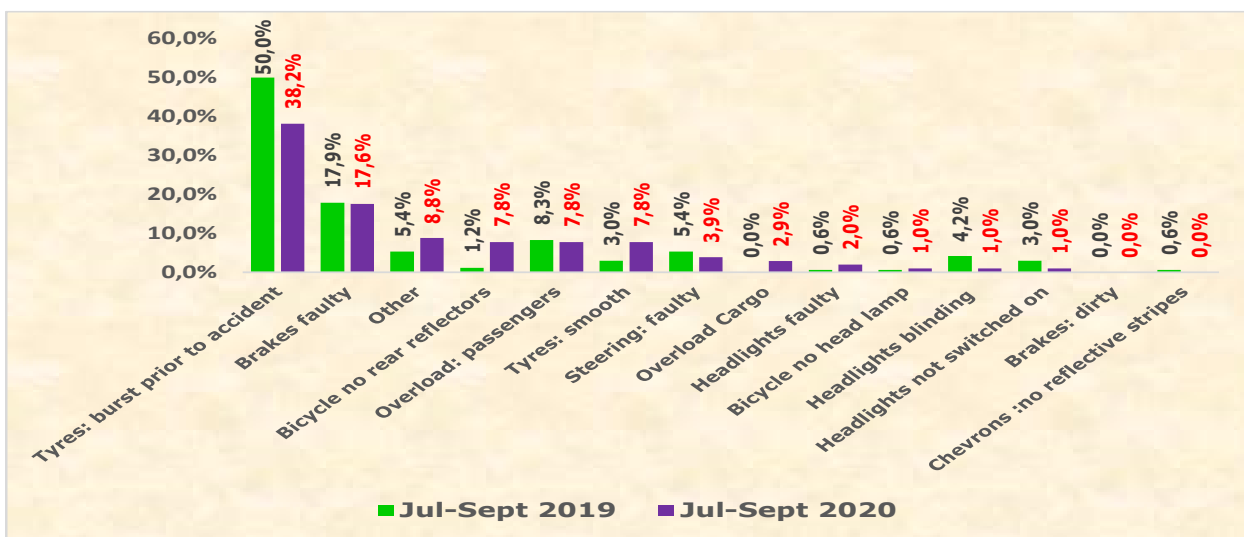


Figure 8: Percentage distribution for vehicle factor

The figure above shows that most crashes occurred as a result of a tyre burst prior to the crash with a contribution of 50% in 2019 and 38.2% during 2020. The faulty brakes contributed 17.6% and overloading of passengers 7.8% during the period under review.

4. ROAD FATALITIES ANALYSIS

The section covers the data in relation to road fatalities. Fatalities are defined as when a person or persons are killed during or immediately after a crash, or death within 30 days after a crash happened as a direct result on such crash. This section encompassed the number of fatalities and percentage distribution per road user group, gender, race and per age.

4.1 Number of fatalities per province

Number of Fatalities per Province										
Year	EC	FS	GP	KZN	LI	MP	NC	NW	WC	RSA
2019	423	192	423	385	389	336	102	175	201	2626
2020	326	154	463	537	293	285	62	221	220	2561
change	-97	-38	40	152	-96	-51	-40	46	19	-65
% change	-22,9	-19,8	9,5	39,5	-24,7	-15,2	-39,2	26,3	9,5	-2,5

Table 3: Comparison of fatalities per province for the two quarters of 2019 and 2020

The table above shows a comparison of fatalities per province for the two quarters. A decrease in the number of fatalities is depicted from 2 626 in 2019 to 2 561 in 2020. Five (5) of the provinces recorded a decrease while four (4) of the provinces recorded an increase in the number of fatalities. The highest recorded decreases were for Northern Cape with 39.2% followed by Limpopo with 24.7%.

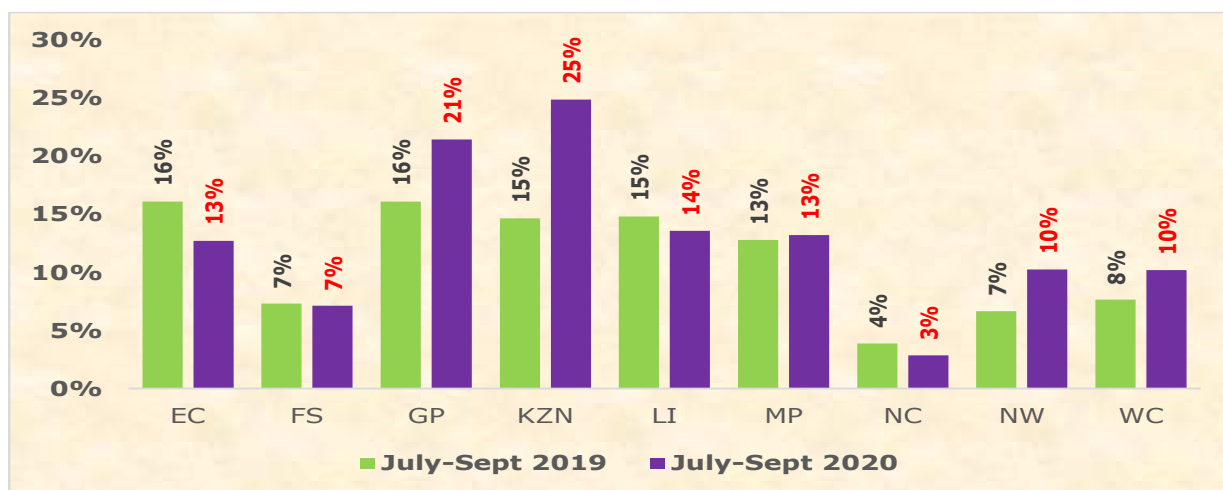


Figure 9: Percentage distribution fatalities per province in 2019 and 2020

4.2 Number of Fatalities per Road User Group

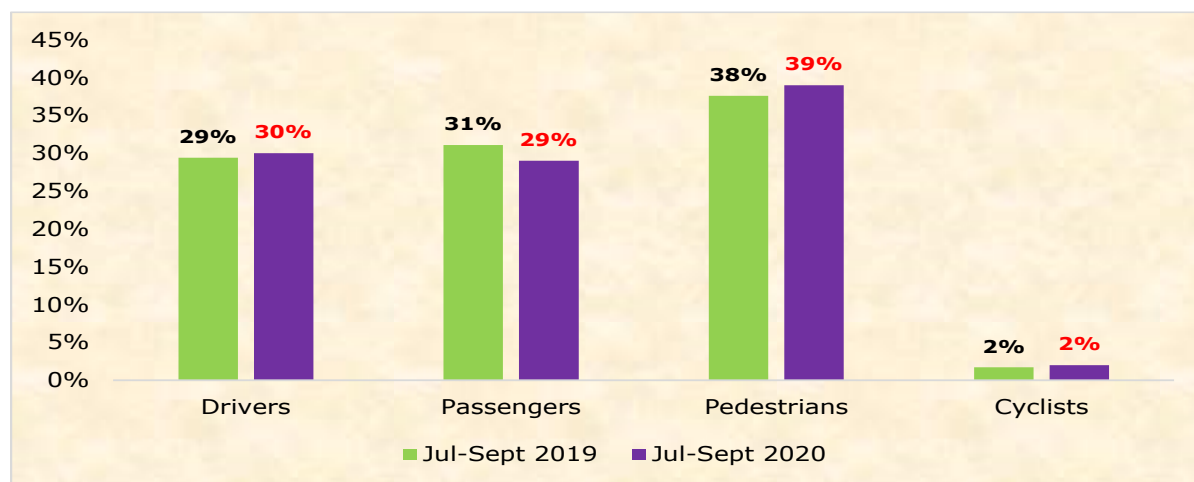


Figure 10: Percentage distribution of fatalities per road user

The percentage distribution of fatalities per road user groups is reflected in the figure above. During the period under review, pedestrians contributed 39%, followed by passengers with 29% and drivers with 30% to the total number of fatalities. Passengers and pedestrians recorded a decrease while the divers recorded an increase as compared to the previous year.

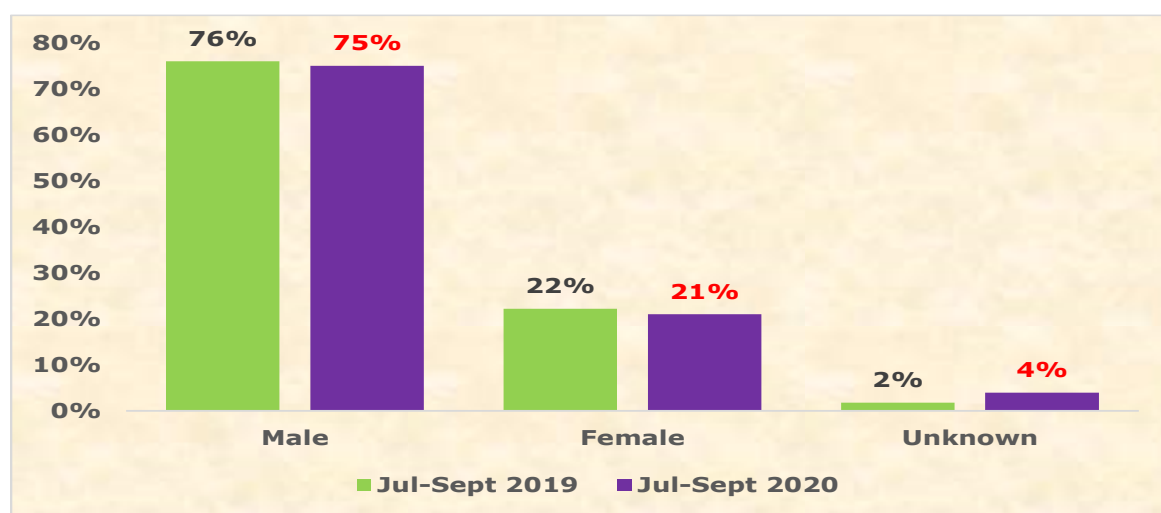


Figure 11: Percentage distribution of fatalities per gender

The figure above depicts trends for fatalities per gender for the two quarters. The trends show that there is a slight decrease of 1% for both males and females in comparison of the two quarters.

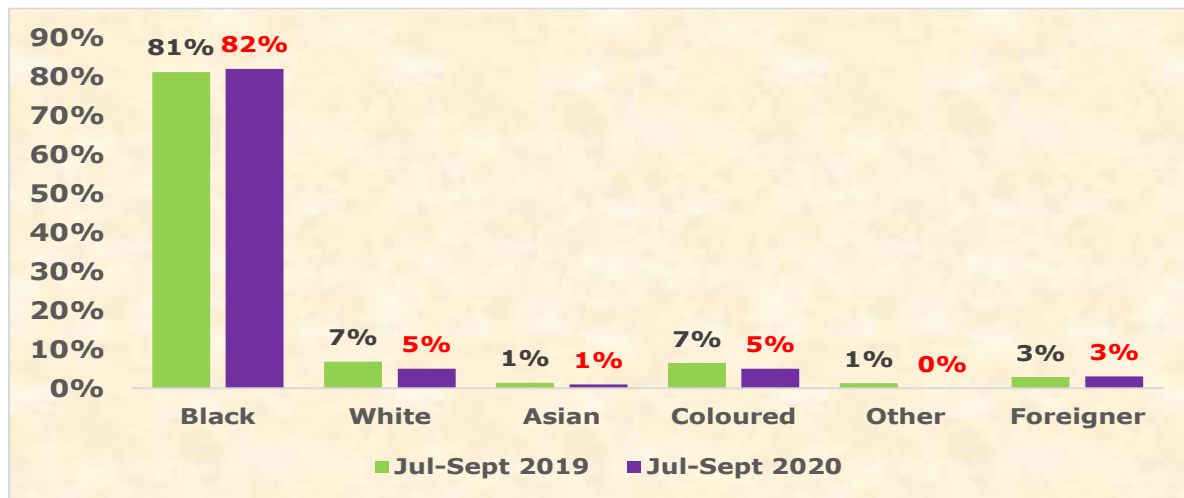


Figure 12: Percentage distribution of fatalities per race

The figure above depicts trends for fatalities per race for the two quarters. The trend shows that there was an increase of 1% for blacks while the white and coloured race recorded a decrease of 2% respectively.

4.3 Road user group fatalities per age group

The figures below provide information with regard to the fatalities per age and per road user group for the period July to September 2019 and 2020. The information is categorised per road user group (Driver, Passenger, Pedestrian and Cyclists).

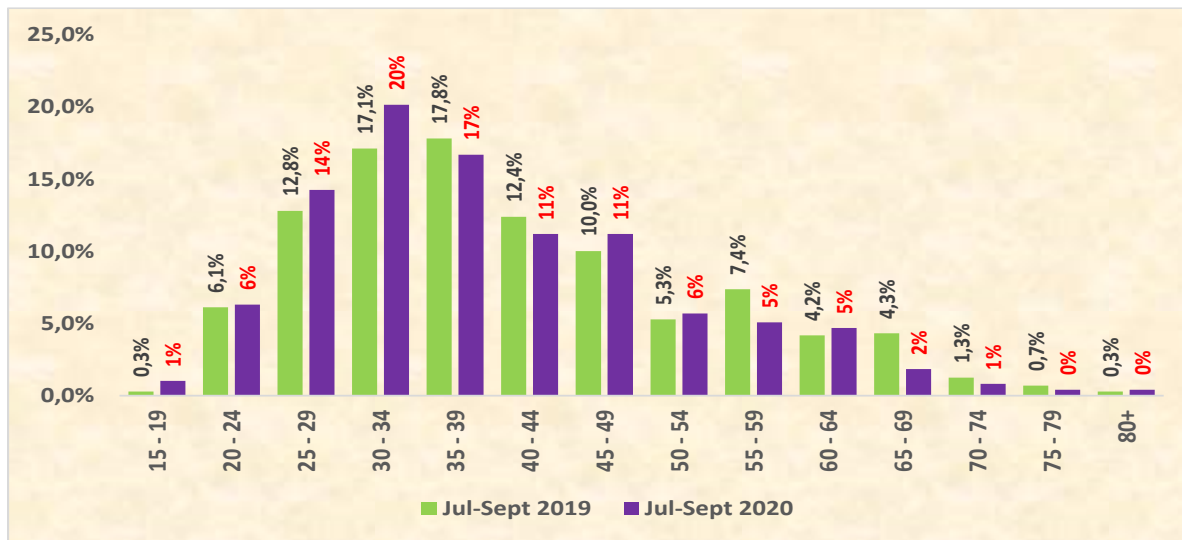


Figure 13: Percentage distribution of fatalities per age for drivers

The figure above shows that the highest fatalities for drivers were recorded from age group 30 to 39 years with a contribution of more than 17%. Followed by age groups 25-29 and 40-49 years with a contribution of more than 11% respectively during 2020 period.

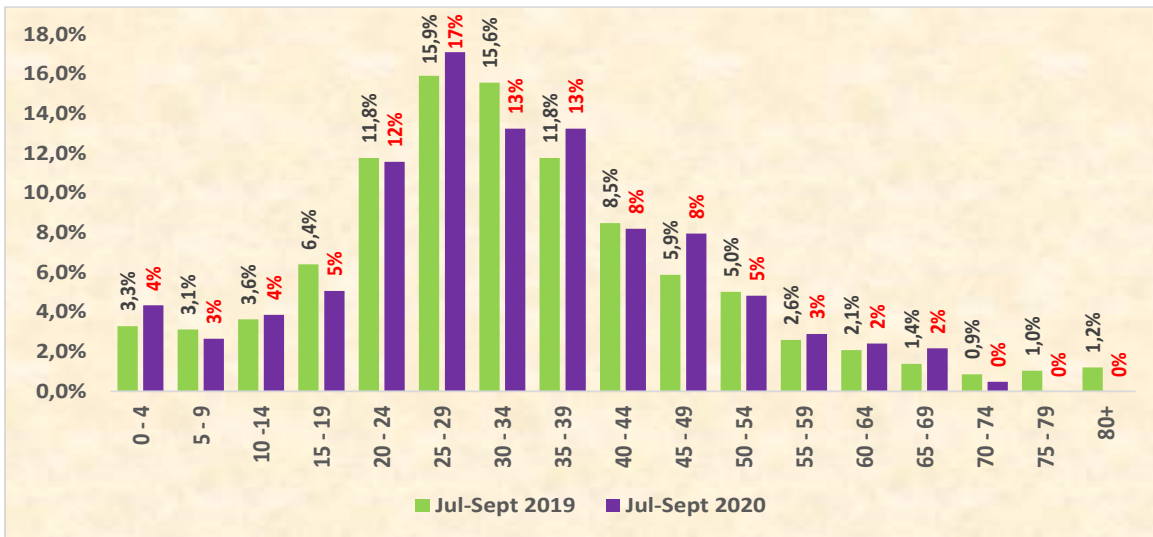


Figure 14: Percentage distribution of fatalities per age for passengers

The figure above indicates that most fatalities for passengers were recorded for age group 25 and 29 years with a contribution of more than 15%. Followed by the age groups between 30 to 34 and 35 to 39 years with a contribution of more than 12% respectively during 2020.

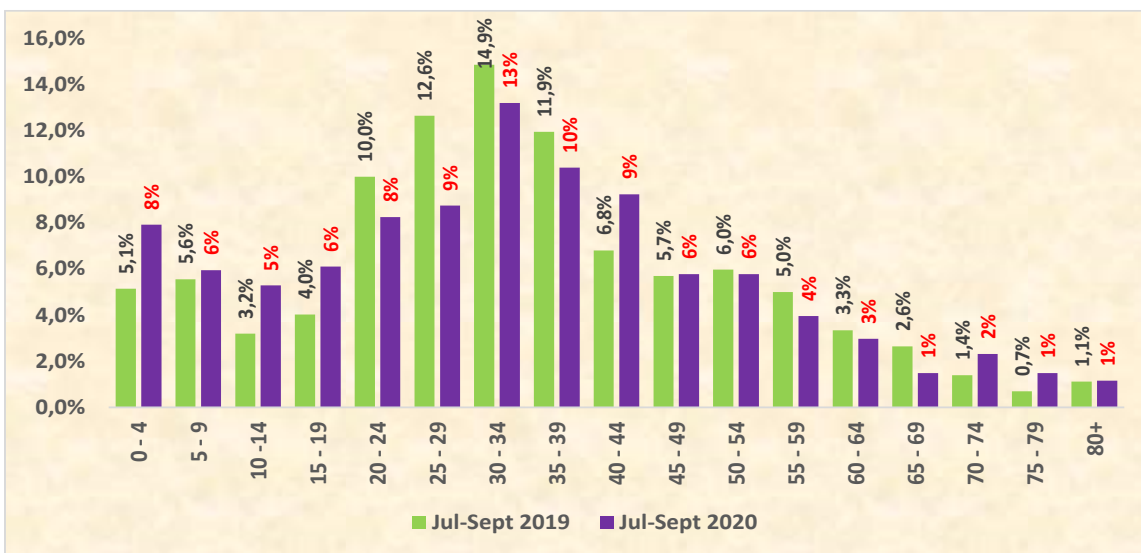


Figure 15: Percentage distribution of fatalities per age for pedestrians

The figure above indicates that the highest fatalities for pedestrians were recorded between the age group 30 to 34 years with a contribution of 13% for 2020. Followed by age group between 35 to 39 with a contribution of 10%.

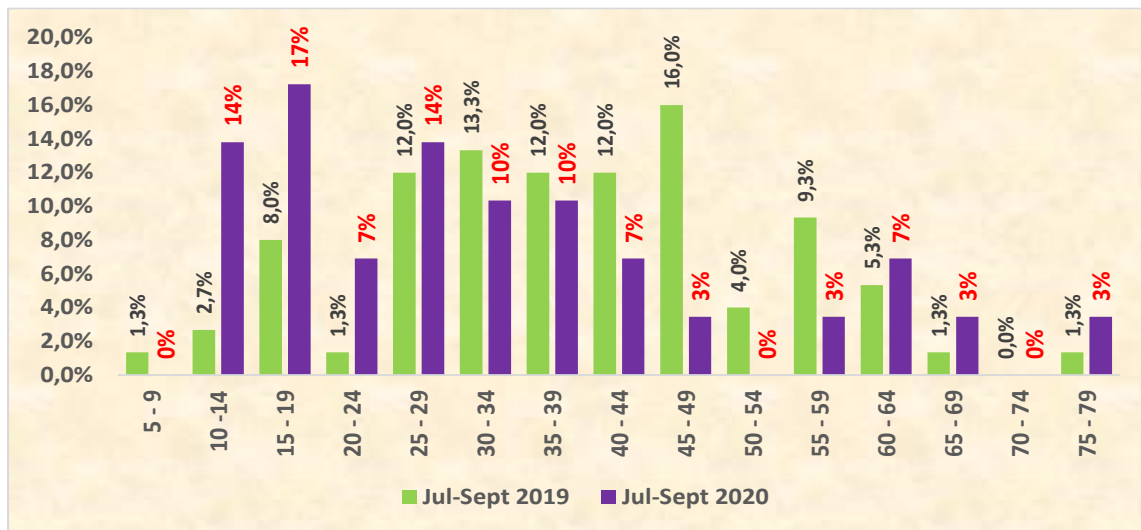


Figure 16: Percentage distribution of fatalities per age for cyclists

The figure above indicates that most fatalities for cyclists were recorded between ages 15 to 19 with a contribution of 17% for 2020. The age groups 10 to 14 and 25 to 29 recorded the second highest percentage at 14% during the period under review.

5. MAJOR CRASHES

This section provides for all the major crashes for the period under review. Major crashes are defined as Crashes where five (5) or more people died, crashes involving vehicles carrying dangerous goods / hazardous chemicals where there is a fatality and a spillage of the dangerous goods / hazardous chemicals, and any crash that the Corporation deems necessary to investigate.

5.1 Number of major crashes

A total number of eighteen (18) major crashes were reported and investigated for the period under review. One-hundred and twelve (112) persons were killed in the major crashes and thirty-nine (39) persons sustained injuries in these major crashes.

The figure below indicates the number of major crashes recorded and investigated, number of fatalities and injuries sustained during the period under review in comparison with the previous year's quarter. During the current period under review the number of the major crashes reported, fatalities and injuries has decreased by 9, 49 and 212 respectively as compared to the previous year.



Figure 17: Comparison of major crashes, fatalities and injuries

5.2 MAJOR CRASHES PER PROVINCE

The province that recorded the highest number of major fatal crashes and fatalities was Kwa-Zulu Natal with 7 major crashes with 47 fatalities.

The figure below provides the major crashes reported per province in comparison of the two periods.

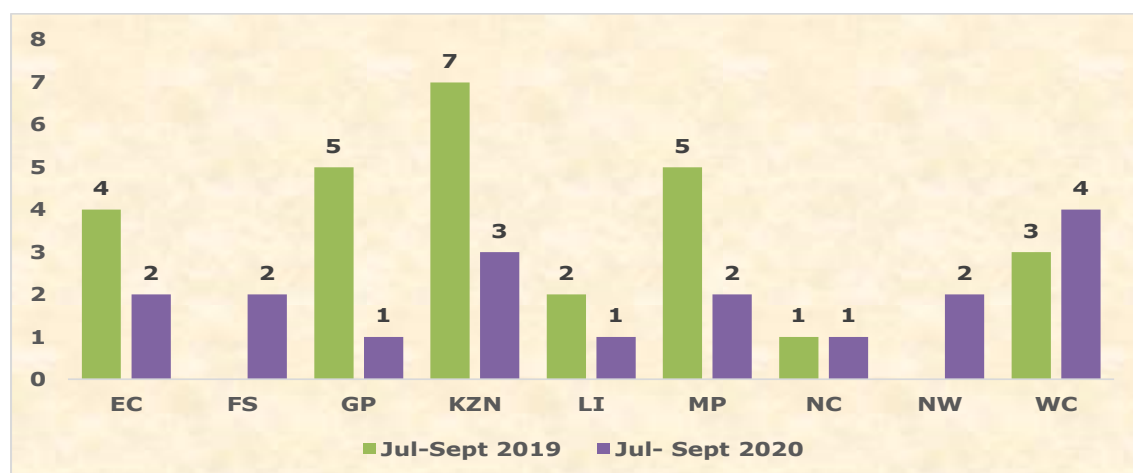


Figure 18: Provincial comparison of major crashes for the two quarters

5.3 Crash Types

The figure below indicates the number of crashes per crash type.

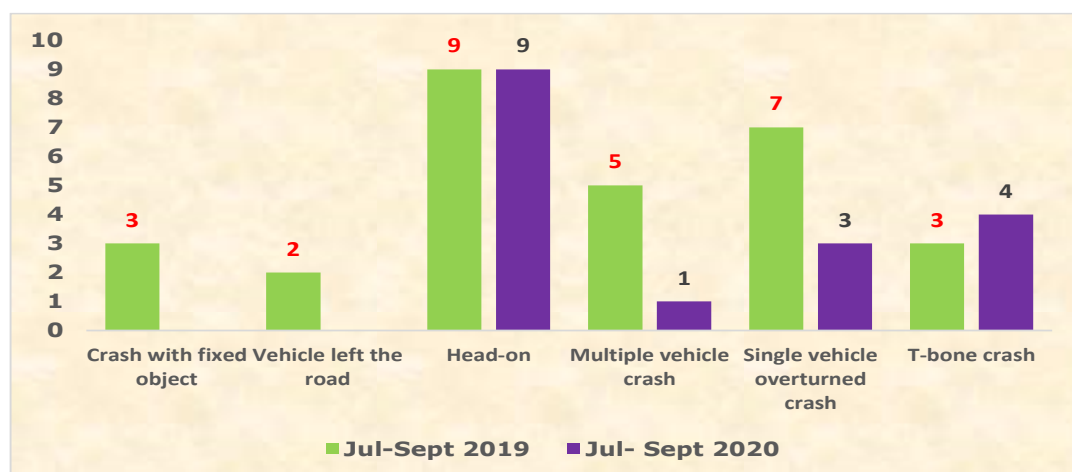


Figure 19: Major Crashes per crash type

The crash type with the highest contribution to major fatal crashes were Head-on with 9 followed by T-bone crash with 4 incidents.

5.4 Vehicle Involved in Major Crashes

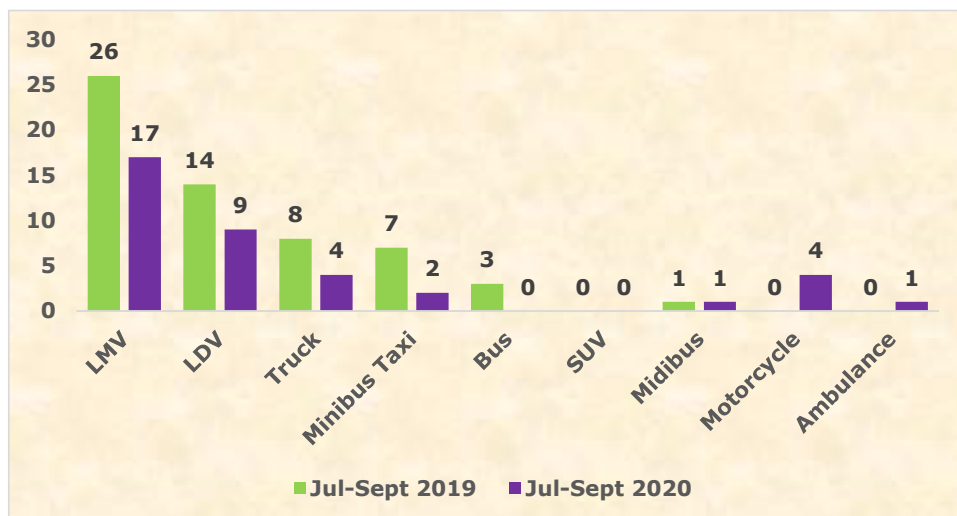


Figure 20: Vehicles involved in major crashes

The figure above depicts the vehicle types involved in the major crashes reported and investigated during the second quarters of 2019 and 2020. A total of fifty-nine (59) vehicles were involved during the second quarter of 2019 while during the second quarter of 2020 there were thirty-eight (38) vehicles involved.

Contributory Factors in Major Crashes

The analysis from major fatal crashes report indicates that 89% of the contributory factors occurred were due to Driver/ Human Error which remained the same in comparison of the two quarters in 2019 and 2020. The vehicle factor contributed 11.1% to the major crashes which increased by 7.4% from 3.7% in 2019. The road and environment contributed nothing to the major crashes during the current period under review as compared to 7.4% during the past period.

SECTION B

1. INTRODUCTION

The section covers the vehicle population and human mobility data, as well as driver population. The vehicle population data will encompass the number of registered vehicles inclusive of the status of their roadworthiness and licencing, as well as human mobility in terms of the number of persons per vehicle. The driver population data covers the number of registered drivers including the status and categories of licences

2. VEHICLE POPULATION

2.1 Number of Registered Vehicles

The number of registered vehicles increased by 10 340 (0.08%) from 12 703 720 on 30 September 2019 to 12 714 060 vehicles as at 30 September 2020. Detail per type of vehicle is given in table below.

Number of Registered Vehicles	Number	Number	Change	%	% of Group	% of Total
	registered Sept 2019	registered Sept 2020				
Motorised Vehicles						
Motorcars	7 495 294	7 510 260	14 966	0,20	65,28	59,07
Minibuses	341 194	341 761	567	0,17	2,97	2,69
Buses	65 408	65 245	-163	-0,25	0,57	0,51
Motorcycles	346 516	340 896	-5 620	-1,62	2,96	2,68
LDV's - Bakkies	2 612 980	2 618 353	5 373	0,21	22,76	20,59
Trucks	381 148	379 403	-1 745	-0,46	3,30	2,98
Other & Unknown	251 249	248 515	-2 734	-1,09	2,16	1,95
Total Motorised	11 493 789	11 504 433	10 644	0,09	100,00	90,49
Caravans	100 119	98 353	-1 766	-1,76	8,13	0,77
Heavy Trailers	205 458	209 085	3 627	1,77	17,29	1,64
Light Trailers	889 084	887 380	-1 704	-0,19	73,36	6,98
Other & Unknown	15 270	14 809	-461	-3,02	1,22	0,12
Total Towed	1 209 931	1 209 627	-304	-0,03	100,00	9,51
All Vehicles	12 703 720	12 714 060	10 340	0,08		100,00

Table 4: Number of registered vehicles per type for 2019 and 2020

The table above shows that on a percentage basis the biggest change was for motorcars and LDV Bakkies with an increase of 59% and 21% respectively. The number of registered motorcars increased from 7 495 294 to 7 510 260 and followed by LDV Bakkies with an increased from 2 612 980 to 2 618 353 respectively. The monthly percentage change over the past year for motorised vehicles are shown in the figure below.

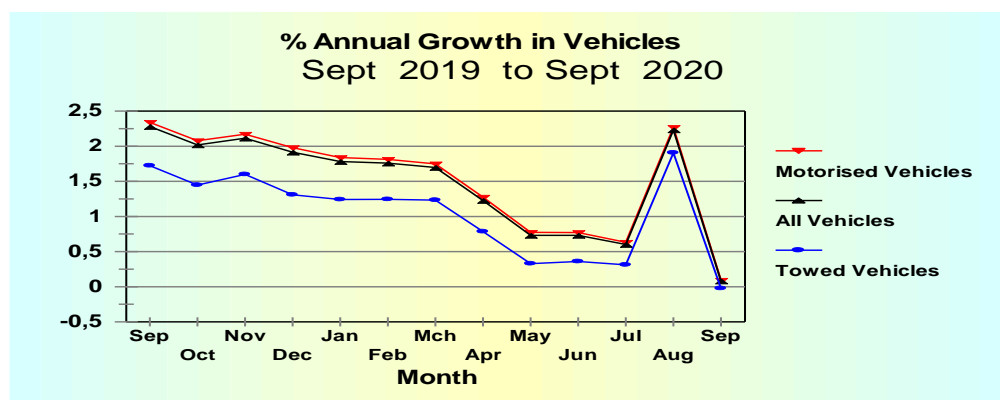


Figure 21: Percentage Annual Growth in Vehicles

The total motor vehicle population per Province for September 2019 and September 2020 respectively, is given in table and reflected in the figure below.

Number of Registered Vehicles per Province	Number registered Sept 2019	Number registered Sept 2020	Change	% Change	% of Total Sept 2020
Gauteng	4 893 971	4 889 860	-4 111	-0,08	38,46
KwaZulu-Natal	1 692 524	1 697 022	4 498	0,27	13,35
Western Cape	2 056 052	2 052 696	-3 356	-0,16	16,15
Eastern Cape	845 339	849 235	3 896	0,46	6,68
Free State	640 371	638 384	-1 987	-0,31	5,02
Mpumalanga	918 601	916 152	-2 449	-0,27	7,21
North West	637 158	638 793	1 635	0,26	5,02
Limpopo	733 857	744 793	10 936	1,49	5,86
Northern Cape	285 847	287 125	1 278	0,45	2,26
RSA	12 703 720	12 714 060	10 340	0,08	100

Table 5: Number of registered vehicles per province

The number of registered vehicles per province show the highest increase (percentage change) recorded for Limpopo with an increase of 1.49% from 733 857 in 2019 to 744 793 in 2020.

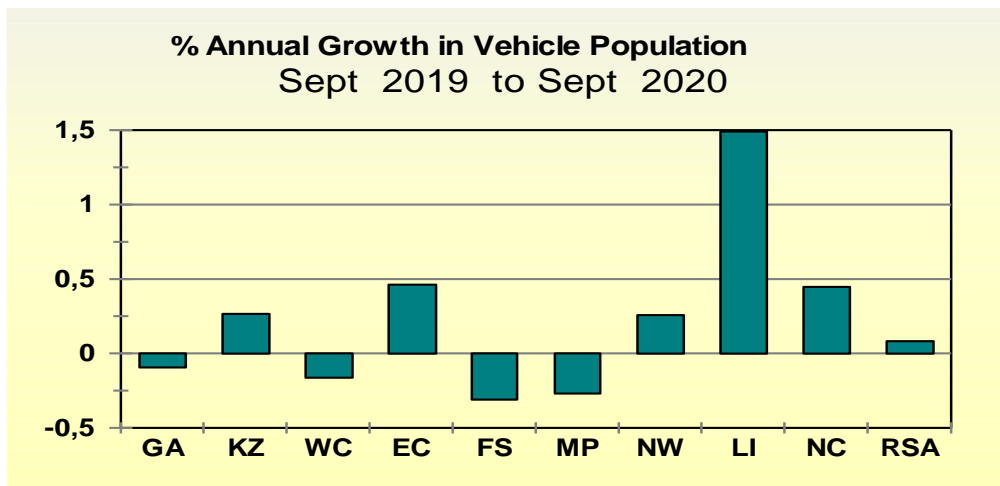


Figure 22: Percentage Annual Growth in Vehicle Population

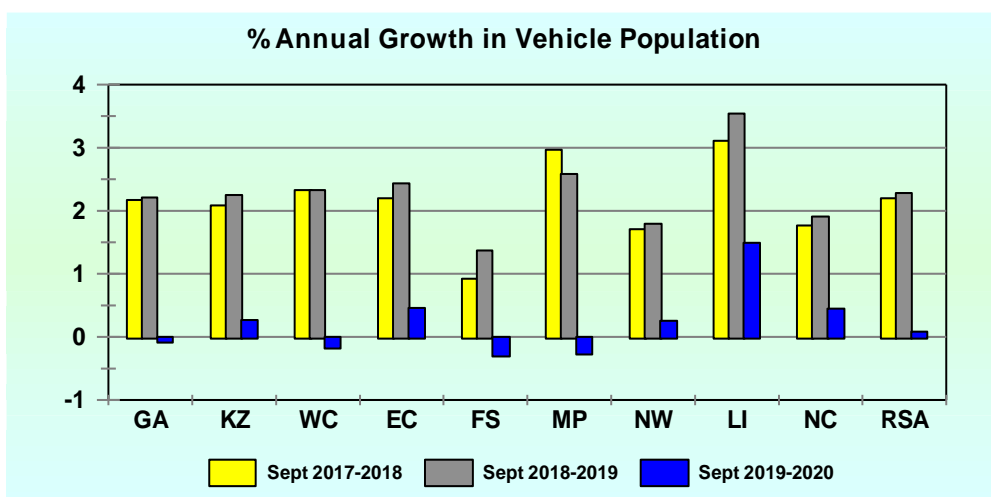


Figure 23: Percentage Annual Growth in Vehicle Population

The percentage vehicles registered per province as on 30 September 2020 is reflected in the figure below.

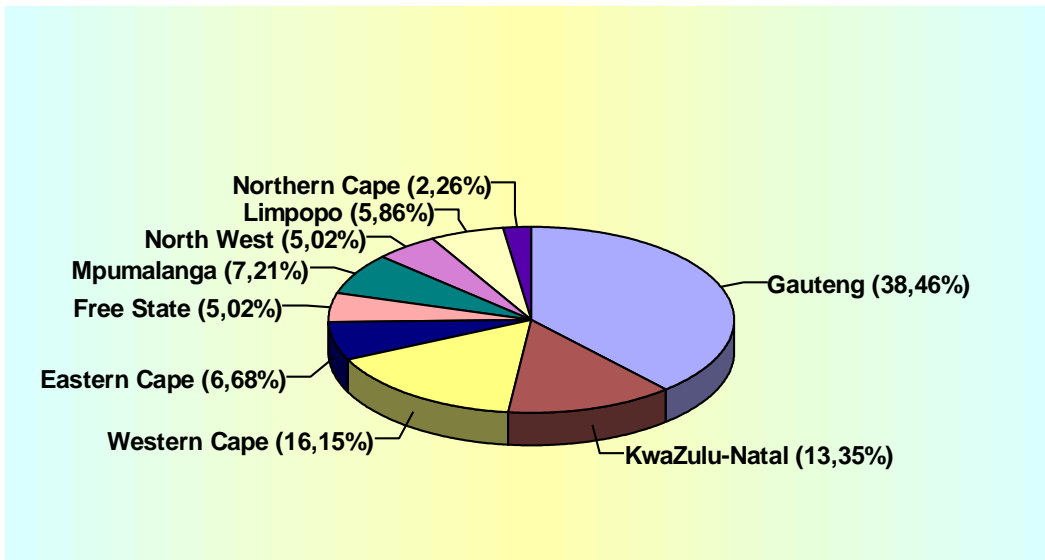


Figure 24: Percentage Vehicles Registered per Province

The information in the figure above shows that 39% of all vehicles were registered in Gauteng; 16% in Western Cape and 13% in Kwa-Zulu Natal.

More detailed information on the number of vehicles per type registered per Province for September 2019 and September 2020 is given in the table under **Appendix A**.

5.1.2 Human Population and Mobility

The estimated human population for each year from 2017 to 2020 is given in table below. (These figures are estimates from the mid-year estimates released annually by Stats SA).

Month	Province									Total RSA
	GA	KZ	WC	EC	FS	MP	NW	LI	NC	
Sept 2017	13,55	11,16	6,32	7,10	2,87	4,35	3,79	5,84	1,20	56,18
Sept 2018	14,20	11,22	6,50	6,72	2,88	4,46	3,86	5,85	1,22	56,90
Sept 2019	14,60	11,51	6,61	6,77	2,95	4,54	3,96	5,89	1,23	58,07
Sept 2020	15,02	11,50	6,80	6,95	2,91	4,61	4,01	6,05	1,26	59,12

Table 6: Estimated mid-month human population per province – million

Based on the information on human and vehicle populations, the average number of persons per vehicle per Province (excluding trucks, towed vehicles and “other” and “unknown” vehicles) at the end of September 2017, 2018, 2019 and 2020 is shown in the table and reflected in the figure below.

Month	GA	KZ	WC	EC	FS	MP	NW	LI	NC	RSA
Sept 2017	3,32	7,83	3,72	10,18	6,03	6,39	7,58	9,95	5,47	5,42
Sept 2018	3,40	7,69	3,75	9,41	5,98	6,37	7,55	9,64	5,45	5,37
Sept 2019	3,42	7,71	3,73	9,25	6,03	6,28	7,58	9,37	5,40	5,35
Sept 2020	3,52	7,68	3,85	9,45	5,97	6,35	7,63	9,49	5,52	5,44

Table 7: Average number of persons per vehicle (excluding trucks, other, unknown and towed vehicles)

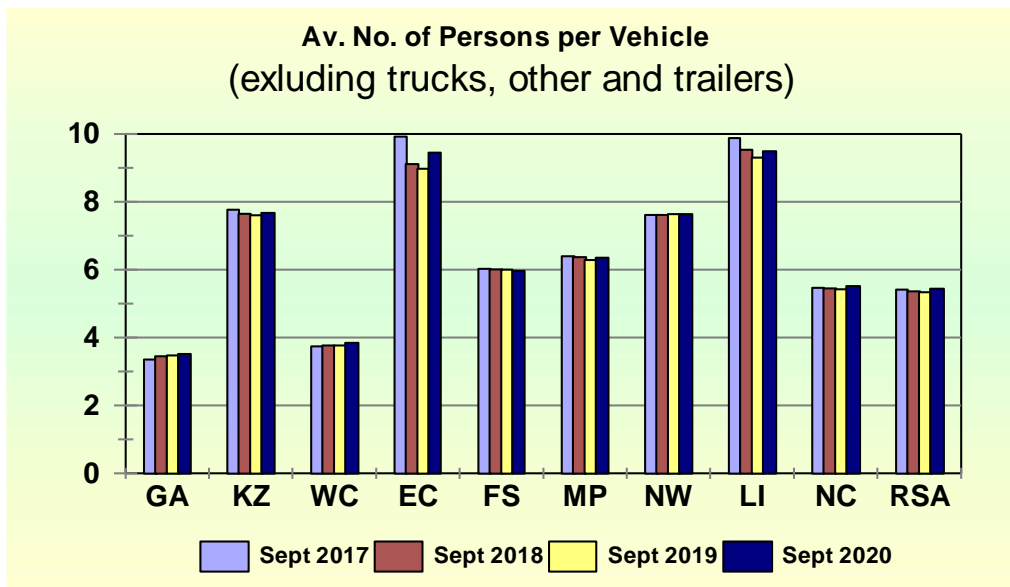


Figure 25: Average number of persons per vehicle (excluding trucks, other and trailer)

The percentage annual change or improvement in human mobility per province is reflected in table below.

Month	Province									Total RSA
	GA	KZ	WC	EC	FS	MP	NW	LI	NC	
Sept 2017-2018	-2,40	1,74	-0,66	7,60	0,79	0,46	0,44	3,10	0,24	1,04
Sept 2018-2019	-0,46	-0,18	0,50	1,68	-0,80	1,34	-0,39	2,80	1,02	0,37
Sept 2019-2020	-1,31	-0,94	-2,09	-5,35	0,52	-1,12	0,06	-2,11	-1,76	-1,82

Table 8: Percentage improvement in mobility per province

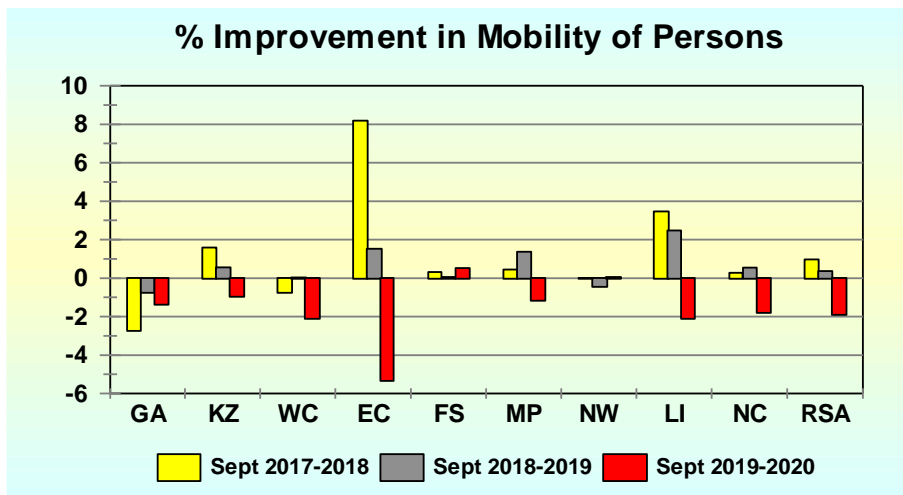


Figure 26: Percentage improvement in mobility of persons

The information in tables and figures above shows that on a national basis the general overall mobility in terms of the number of persons per road vehicle (vehicles that can reasonably transport passengers – motorcars, minibuses, buses, motorcycles and LDV’s “bakkies”), improved by 0.37% from a national average of 5.37 persons per vehicle at the end of September 2018 to 5.35 persons per vehicle at the end of September 2019. As from the end of September 2019 to September 2020 the improvement shows a decrease of 1.82%.

Although they do show some improvement, the “least mobile” Provinces remain Limpopo with 9.49 persons per vehicle; followed by the Eastern Cape with 9.45 persons per vehicle at the end of September 2020. The “most mobile” Provinces are Kwa-Zulu Natal and the North West with an average of 7.68 and 7.63 persons per vehicle respectively at the end of September 2020.

The average number of persons per "heavy" road passenger transport vehicle (buses and minibuses) is shown in table below and reflected in the figure below.

Month	GA	KZ	WC	EC	FS	MP	NW	LI	NC	RSA
Sept 2017	95	185	150	256	183	141	166	200	175	149
Sept 2018	97	180	150	235	181	138	164	191	170	146
Sept 2019	96	178	147	225	180	134	162	182	163	143
Sept 2020	100	174	152	230	178	135	163	184	162	145

Table 9: Average number of persons per "heavy" passenger transport vehicle (buses and minibuses)

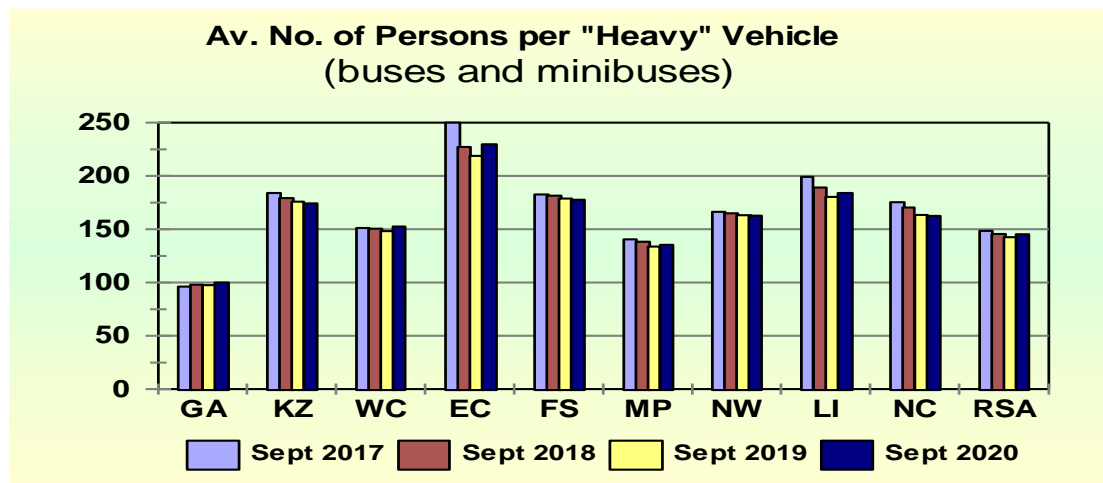


Figure 27: Average number of persons per " heavy vehicles" (buses and minibuses)

The percentage annual change or improvement in the number of persons per “heavy” passenger road transport vehicle per province is reflected in the table below.

Month	Province									Total
	GA	KZ	WC	EC	FS	MP	NW	LI	NC	RSA
Sept 2017-2018	-1,99	2,61	0,45	9,12	0,72	1,68	0,81	5,03	2,76	1,95
Sept 2018-2019	0,48	1,89	1,48	3,73	1,45	3,34	1,11	4,57	4,16	1,96
Sept 2019-2020	-2,44	0,87	-2,83	-5,05	0,57	-1,18	0,28	-1,91	0,51	-1,86

Table 10: Percentage improvement in average number of persons per " heavy" passenger transport vehicles (buses and minibuses)

The information in tables and figure above show that, since the previous year-on-year improvement, the national overall mobility and quality of public road transport in terms of the number of persons per “heavy” passenger road transport vehicle from September 2018 to September 2019 increased by 1.96% from 143 persons on average per vehicle to 145 persons per vehicle. Whilst another improvement has been observed between 2019 and 2020 with -1.86%.

On a Provincial percentage basis, the highest improvement was recorded for Eastern cape where the average number of persons per vehicle changed by - 5.05% followed by Western Cape and Gauteng with -2.83% and -2.44% respectively.

The average number of “heavy” road passenger transport vehicle (buses and minibuses) per 10,000 human population per Province is shown in the table below and reflected in the figure below.

Month	GA	KZ	WC	EC	FS	MP	NW	LI	NC	RSA
Sept 2017	105	54	66	39	55	71	60	50	57	67
Sept 2018	103	55	67	43	55	72	61	52	59	69
Sept 2019	104	56	68	44	56	75	62	55	62	70
Sept 2020	100	57	66	44	56	74	61	54	62	69

Table 11: Average number of public transport vehicles (buses and minibuses) per 10,000 human population

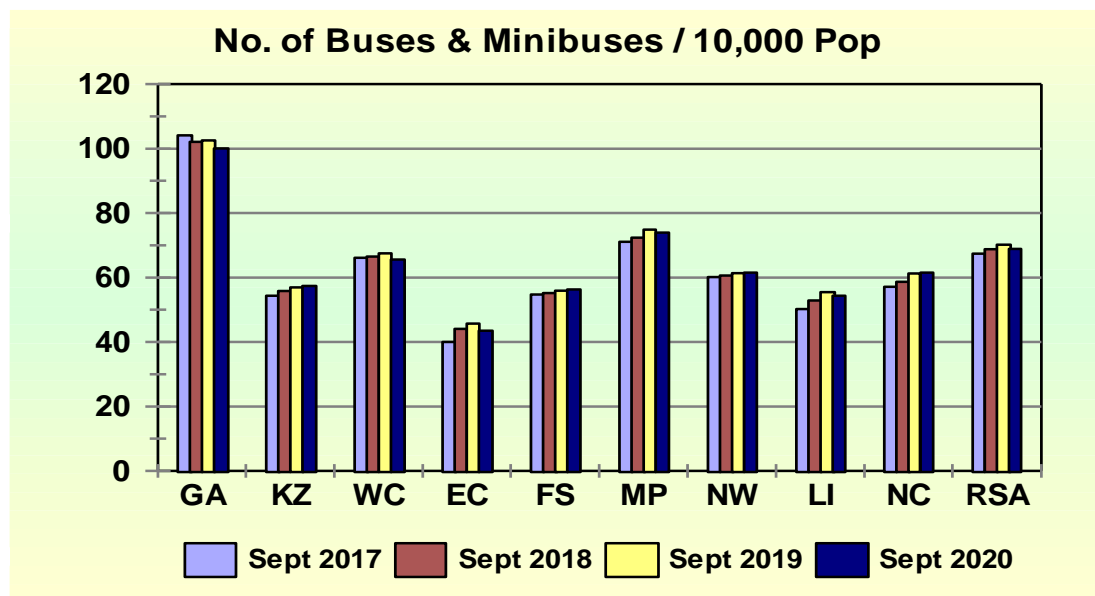


Figure 28: Number of buses and minibuses / 10,000 human population

5.2 Un-Roadworthy and Un-Licensed Vehicles

5.2.1 General

Un-roadworthy vehicles are defined as those of which the owners failed to submit the vehicles for compulsory annual roadworthy tests (including buses, minibus taxis and freight transport vehicles) or on change of ownership. Un-licensed vehicles are those of which the owners failed to renew the vehicle licences within the time frame allowed.

On a national basis the total number of vehicles that are either un-roadworthy, un-licensed or both increased by 916 726 (82.39%) from 1 112 722 vehicles as on 30 September 2018 to 2 029 448 vehicles as on 30 September 2020. Detail in this regard per type of vehicle is provided in the table below and the percentage (%) change from 2019 to 2020 reflected in the figure below.

Vehicle Type	Sept 2019	Sept 2020	Change	% Change
Motorcars	601 786	1 052 077	450 291	74,83
Minibuses	60 276	94 699	34 423	57,11
Buses	9 884	16 422	6 538	66,15
Motorcycles	61 317	86 810	25 493	41,58
LDV's - Bakkies	187 532	320 818	133 286	71,07
Trucks	64 296	96 066	31 770	49,41
Caravans	6 934	12 042	5 108	73,67
Heavy Trailers	26 436	52 236	25 800	97,59
Light Trailers	64 584	132 908	68 324	105,79
Unknown	29 677	165 370	135 693	457,23
All Vehicles	1 112 722	2 029 448	916 726	82,39

Table 12: Number of un-roadworthy, un-licensed vehicles or both

Increases were recorded for all types of vehicles in this regard. The highest increase was recorded for light trailers with 106%.

Detail on the number of vehicles that are either un-roadworthy, un-licenced or both per Province is provided in the table below and the percentage (%) change from 2019 to 2020 reflected in the figure below.

Year	GA	KZN	WC	EC	FS	MP	NW	LI	NC	RSA
Sept 2019	476 286	135 283	136 388	75 129	61 717	85 618	58 101	61 860	22 340	1 112 722
Sept 2020	805 386	268 865	295 519	128 763	120 712	153 134	105 546	108 023	43 500	2 029 448
Change	329 100	133 582	159 131	53 634	58 995	67 516	47 445	46 163	21 160	916 726
% Change	69,10	98,74	116,68	71,39	95,59	78,86	81,66	74,62	94,72	82,39

Table 13: Number of vehicles that are un-roadworthy or un-licenced or both

The information in tables and figures above shows that all provinces recorded an increase in this regard. On a provincial level the highest percentage change increase has been recorded for Western Cape with 117% followed by KwaZulu Natal with 99%.

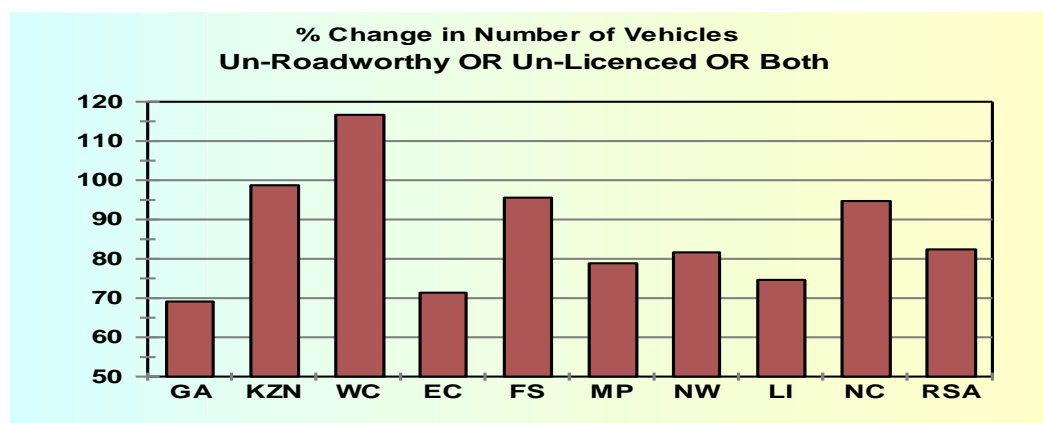


Figure 29: Percentage change in number of vehicles un-roadworthy or un-licensed or both

5.2.2 Number of Un-Roadworthy Vehicles

The number of vehicles that are un-roadworthy (but licenced) increased by 162 843 (27%) from 607 988 vehicles as at 30 September 2019 to 770 831 vehicles as at 30 September 2020. Detail in this regard is given in the table below and the percentage of un-roadworthy vehicles per type of vehicle, as a percentage of the number registered, is reflected in the figure below.

Vehicle Type	Sept 2019	Sept 2020	Change	% Change
Motorcars	297 035	309 388	12 353	4,16
Minibuses	41 700	47 052	5 352	12,83
Buses	8 014	10 295	2 281	28,46
Motorcycles	38 135	36 534	-1 601	-4,20
LDV's - Bakkies	94 574	90 310	-4 264	-4,51
Trucks	51 875	64 753	12 878	24,83
Caravans	3 880	3 943	63	1,62
Heavy Trailers	22 926	39 216	16 290	71,05
Light Trailers	28 390	35 356	6 966	24,54
Unknown	21 459	133 984	112 525	524,37
All Vehicles	607 988	770 831	162 843	26,78

Table 14: Number of un-roadworthy vehicles

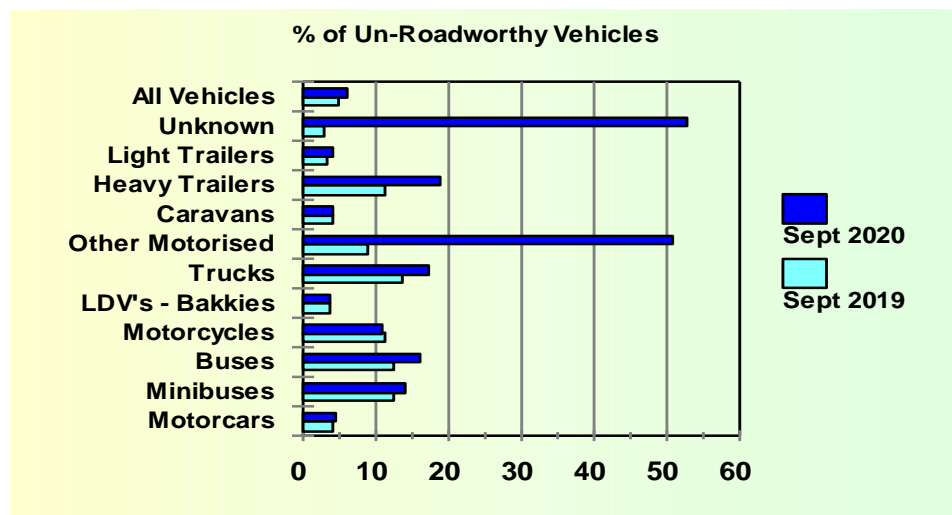


Figure 30: Percentage of un-roadworthy vehicles

The information in the table and figure above shows that all vehicle types recorded an increase in this regard. The highest increase for un-roadworthy vehicles was recorded for heavy trailers and buses.

Details with regards to the number of vehicles that are un-roadworthy per Province are provided in the table below and the percentage (%) change from 2019 to 2020 reflected in the figure below.

Year	GA	KZN	WC	EC	FS	MP	NW	LI	NC	RSA
Sept 2019	279 143	69 672	74 836	33 740	36 801	44 489	30 542	27 468	11 297	607 988
Sept 2020	321 266	95 116	102 012	42 292	58 166	58 782	40 854	35 829	16 514	770 831
Change	42 123	25 444	27 176	8 552	21 365	14 293	10 312	8 361	5 217	162 843
% Change	15,09	36,52	36,31	25,35	58,06	32,13	33,76	30,44	46,18	26,78

Table 15: Number of un-roadworthy vehicles

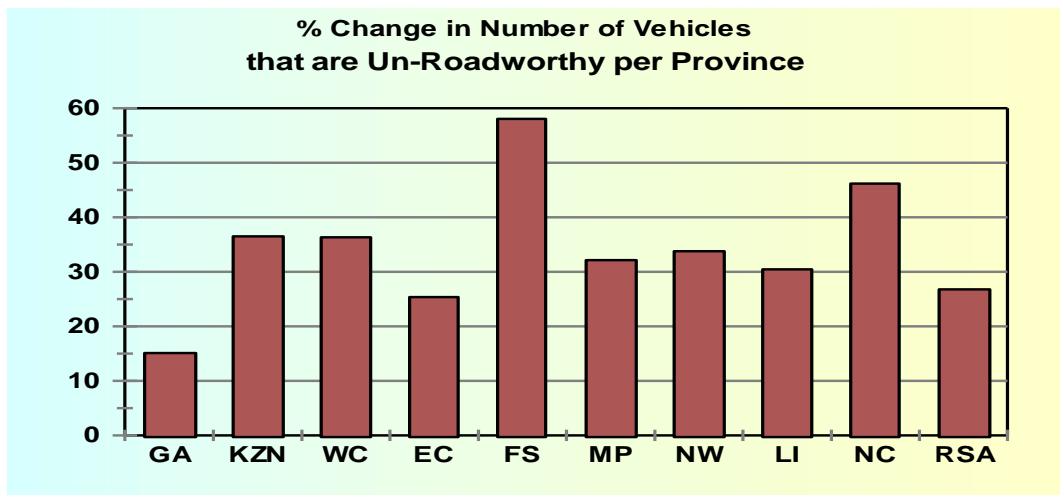


Figure 31: Percentage change in number of vehicles that are un-roadworthy per province

The information in the table and figure above shows that all provinces recorded increase in the number of un-roadworthy vehicles. On a percentage basis the highest increase was recorded in Free State where the number of un-roadworthy vehicles increased by 21 365(58%) from 36 801 in 2019 to 58 166 as at the end of September 2020. The second highest increase in this regard was recorded in Northern Cape with an increase of 46%.

The percentage of un-roadworthy vehicles per Province, expressed as a percentage of the total number of vehicles registered per province, is shown in the figure below.

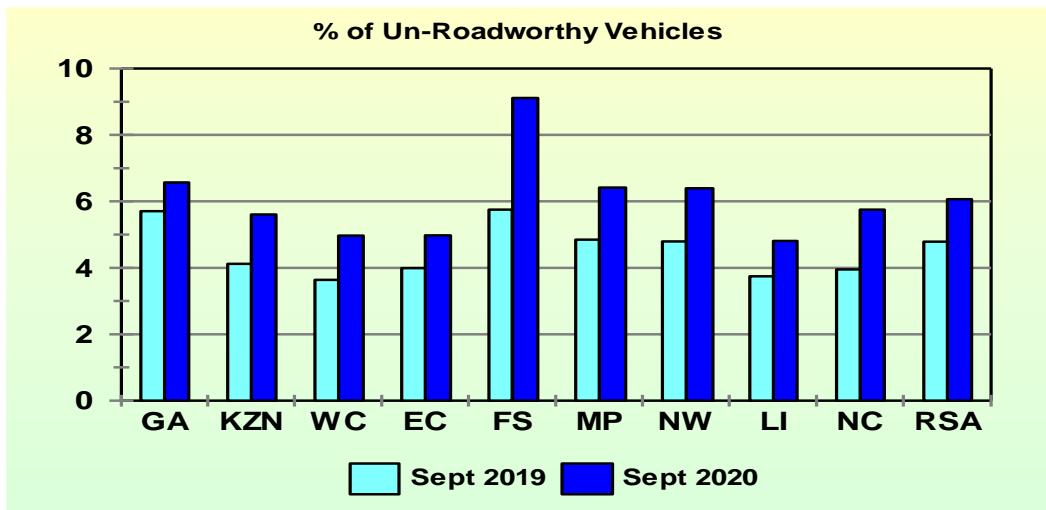


Figure 32: Percentage of un-roadworthy vehicles

5.2.3 Number of Un-Licensed Vehicles

On a national basis the number of un-licensed vehicles decreased by 712 408(159%) from 448 985 vehicles as at 30 September 2019 to 1 161 393 vehicles as at 30 September 2020.

Detail per type of vehicle in this regard is given in the table below and the percentage of un-licensed vehicles per type of vehicle, as a percentage of the number registered, is reflected in the figure below.

Vehicle Type	Sept 2019	Sept 2020	Change	% Change
Motorcars	273 984	700 543	426 559	155,69
Minibuses	14 224	39 326	25 102	176,48
Buses	1 423	4 917	3 494	245,54
Motorcycles	19 247	43 386	24 139	125,42
LDV's - Bakkies	83 709	216 861	133 152	159,07
Trucks	9 692	25 813	16 121	166,33
Caravans	2 789	7 544	4 755	170,49
Heavy Trailers	2 846	10 524	7 678	269,78
Light Trailers	33 865	92 015	58 150	171,71
Unknown	7 206	20 464	13 258	183,99
All Vehicles	448 985	1 161 393	712 408	158,67

Table 16: Number of un-licensed vehicles

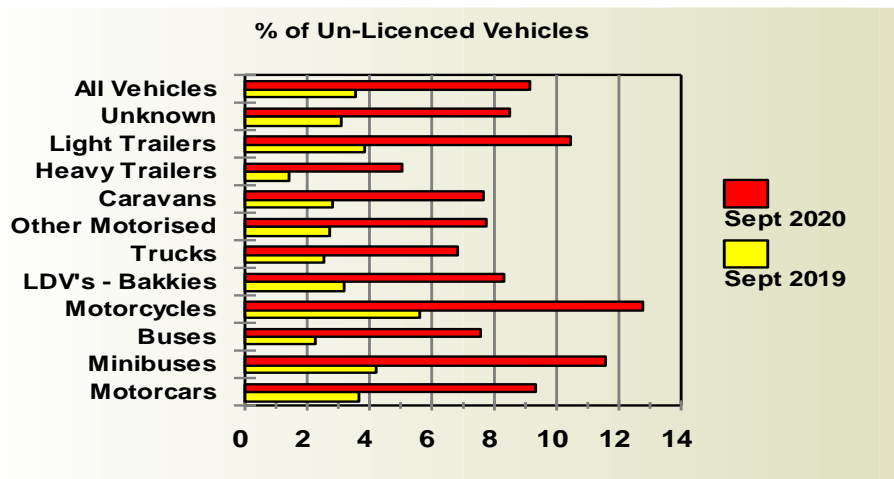


Figure 33: Percentage of un-licensed vehicles

The information in the table and figure above shows that all vehicle types recorded an increase with regard to the number of un-licensed vehicles. On a percentage basis the highest increase was recorded for heavy trailers and buses with 270% and 246% respectively.

Detail on the number of vehicles that are un-licensed per Province is provided in the table below and the percentage (%) change from 2019 to 2020 reflected in the figure below.

Year	GA	KZN	WC	EC	FS	MP	NW	LI	NC	RSA
Sept 2019	176 800	58 775	54 096	36 786	21 462	36 068	24 513	30 686	9 799	448 985
Sept 2020	449 053	160 991	180 574	79 556	55 297	85 768	59 363	66 348	24 443	1 161 393
Change	272 253	102 216	126 478	42 770	33 835	49 700	34 850	35 662	14 644	712 408
% Change	153,99	173,91	233,80	116,27	157,65	137,80	142,17	116,22	149,44	158,67

Table 17: Number of un-licensed vehicles

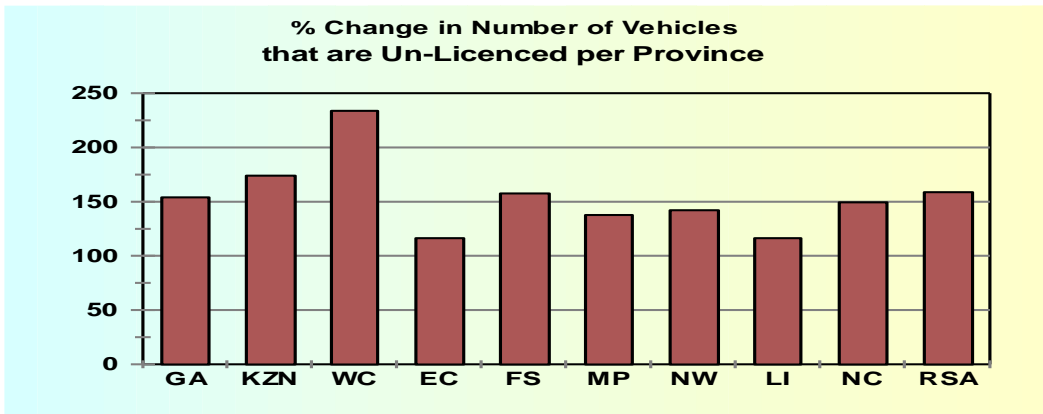


Figure 34: Percentage change in number of vehicle that are un-licensed per province

The information in the table and figure above shows that the highest decrease in the number of un-licensed vehicles were recorded in Western Cape with 233%, followed by KwaZulu Natal with 174%. The percentage of un-licensed vehicles per type of vehicle, as a percentage of the number registered per Province, is reflected in the figure below.

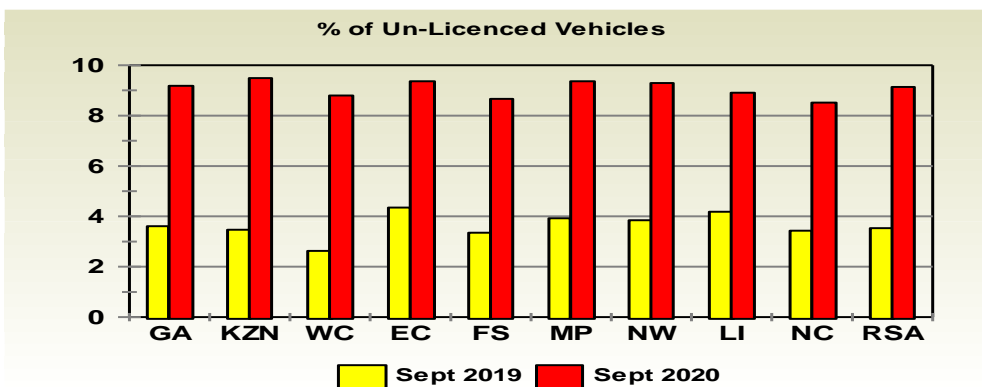


Figure 35: Percentage of un-licensed vehicles

Detailed information on the number of un-roadworthy and un-licensed vehicles per type of vehicle per Province is provided in the tables under **Appendix B**.

6 Driver Population

6.1 Learner Driving Licences

The number of learner driving licences issued decreased by 225 601(19.04%) from 1 184 713 as at 30 September 2019 to 959 112 as at 30 September 2020. Detail on the number of learner driving licences issued per category is given in table below and graphically reflected in the figure below.

Category	Sept 2019	Sept 2020	Change	% Change
1	38 679	30 787	-7 892	-20,40
2	230 555	179 156	-51 399	-22,29
3	915 479	749 169	-166 310	-18,17
Total	1 184 713	959 112	-225 601	-19,04

Table 18: Number of learner licences issued

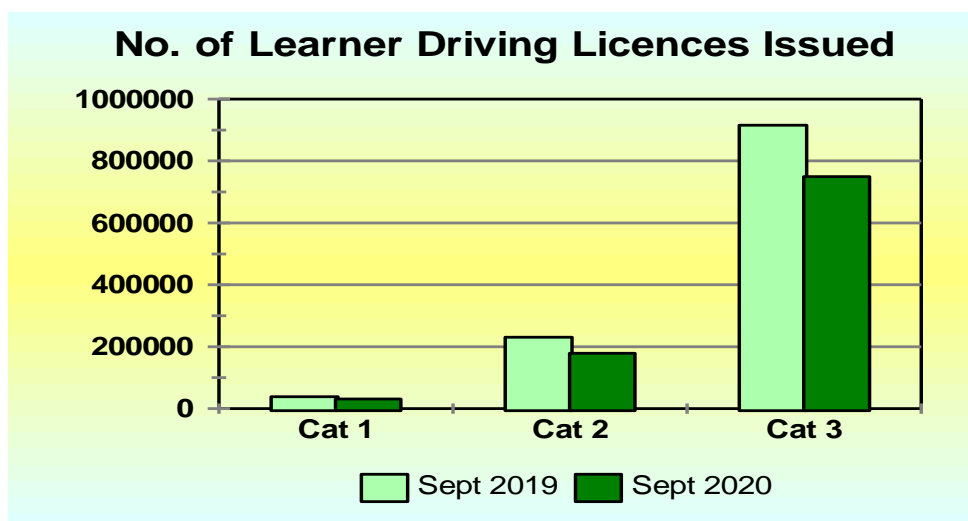


Figure 36: Number of learner licenses issues

Provincial information in this regard is given in the table below and the percentage change per Province over the 12-month period is reflected in the figure below.

Year	GA	KZ	WC	EC	FS	MP	NW	LI	NC	RSA
Sept 2019	350 238	193 138	176 662	100 971	66 851	107 493	61 324	99 623	28 413	1 184 713
Sept 2020	299 625	148 201	140 728	81 521	49 452	85 102	50 573	81 222	22 688	959 112
Change	-50 613	-44 937	-35 934	-19 450	-17 399	-22 391	-10 751	-18 401	-5 725	-225 601
% Change	-14,45	-23,27	-20,34	-19,26	-26,03	-20,83	-17,53	-18,47	-20,15	-19,04

Table 19: Number of learners licences issued per province

All the provinces recorded a decrease with regards to the number of Learner Licences issued. The highest decrease was recorded for Free State with 26.03% followed by KwaZulu Natal with 23.27%.

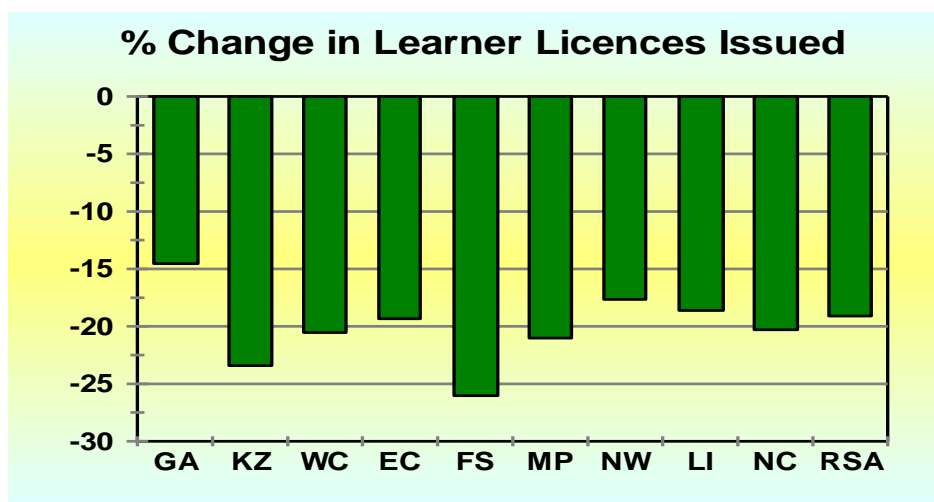


Figure 37: Percentage change in learner licenses issued per province

6.2 Driving Licences Issued and Expired

6.2.1 Number of Driving Licences Issued

The number of driving licences issued increased by 364 178 (2.71%) from 13 423 683 as at 30 September 2019 to 13 787 861 as of 30 September 2020. Details on the number of driving licences issued per category is given in table and graphically reflected in the figure below.

Category	Sept 2019	Sept 2020	Change	% Change
A	490 698	495 793	5 095	1,04
A1	122 628	122 589	-39	-0,03
B	3 028 017	3 111 758	83 741	2,77
C	24 051	24 415	364	1,51
C1	4 413 306	4 654 030	240 724	5,45
EB	3 639 972	3 642 885	2 913	0,08
EC	1 119 659	1 152 181	32 522	2,90
EC1	585 352	584 210	-1 142	-0,20
Total	13 423 683	13 787 861	364 178	2,71

Table 20: Number of driving licences issued

Driving licences:

A	Motorcycle > 125 cub.cm	A1	Motorcycle < 125 cub.cm	B	Motor vehicle < 3,5000 kg
C	Motorvehicle > 16,000 kg	C1	Motor vehicle 3,500 – 16,000 kg	EB	Articulated motor vehicle <16,000 kg
		EC	Articulated vehicle > 16,000 kg	EC1	Articulated vehicle 3,500 – 16,000 kg

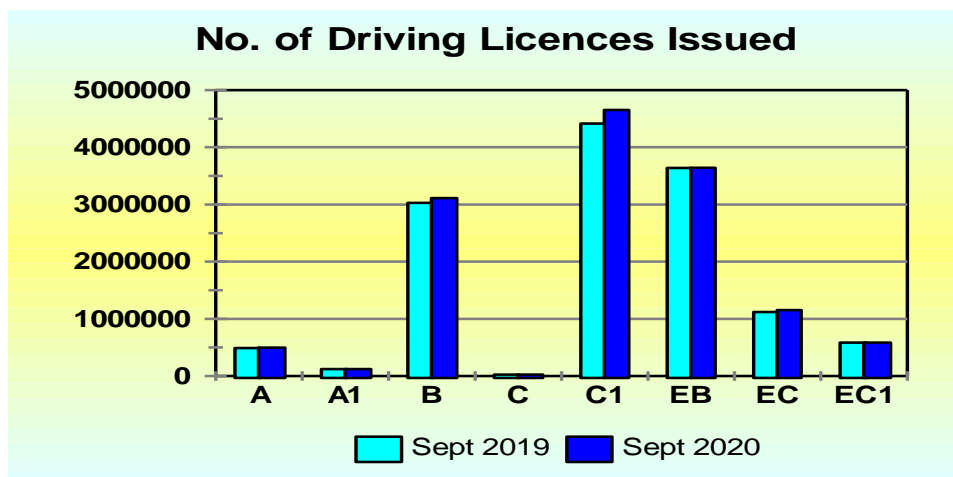


Figure 38: Number of driving licenses issued

The information contained in the table above depict that the highest percentage change was recorded for Categories C1, EC, and B with percentages of 5.45%, 2.90% and 2.77% respectively.

The number and percentage (%) of driving licences issued per category at the end of September 2020 is reflected in the table below.

Category	Description	Number	%
A	Motorcycle > 125 cub.cm	495 793	3,60
A1	Motorcycle < 125 cub.cm	122 589	0,89
B	Motor vehicle < 3,5000 kg	3 111 758	22,57
C	Motor vehicle >16,000 kg	24 415	0,18
C1	Motor vehicle 3,500 - 16,000 kg	4 654 030	33,75
EB	Articulated motor vehicle < 16,000 kg	3 642 885	26,42
EC	Articulated vehicle > 16,000 kg	1 152 181	8,36
EC1	Articulated vehicle 3,500 - 16,000 kg	584 210	4,24
Total		13 787 861	100

Table 21: Number and percentage of driving licences issued per category

Provincial information in this regard is given in the table below and the percentage change with regard to all licences issued per province is reflected in the figure below.

Year	GA	KZ	WC	EC	FS	MP	NW	LI	NC	RSA
Sept 2019	4 671 575	2 153 411	2 029 673	982 180	665 125	997 868	635 025	1 039 831	248 995	13 423 683
Sept 2020	4 812 315	2 211 125	2 073 062	1 008 659	676 158	1 031 556	647 276	1 072 584	255 126	13 787 861
Change	140 740	57 714	43 389	26 479	11 033	33 688	12 251	32 753	6 131	364 178
% Change	3,01	2,68	2,14	2,70	1,66	3,38	1,93	3,15	2,46	2,71

Table 22: Number of driving licences issued per province

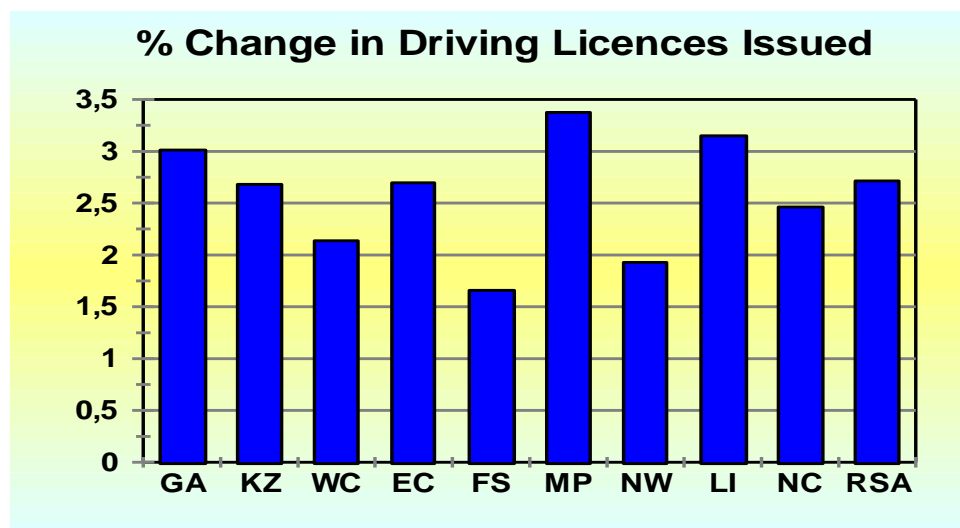


Figure 39: Percentage change in driving licenses issued

6.3 Number of Driving Licence Cards Expired

The information in Table below shows that as at 30 September 2020 there were 2 848 838 expired driving licence cards recorded on the National Traffic Information System (NaTIS). This figure represents 20,66% of all driving licences issued. This information is also reflected in the figure below.

Category	GA	KZ	WC	EC	FS	MP	NW	LI	NC	RSA
On system	4 812 315	2 211 125	2 073 062	1 008 659	676 158	1 031 556	647 276	1 072 584	255 126	13 787 861
Not expired	3 857 331	1 719 214	1 657 580	743 419	514 055	842 916	520 778	878 325	205 405	10 939 023
Expired	954 984	491 911	415 482	265 240	162 103	188 640	126 498	194 259	49 721	2 848 838
% Expired	19,84	22,25	20,04	26,30	23,97	18,29	19,54	18,11	19,49	20,66

Table 23: Number of driving licences cards issued and expired per province

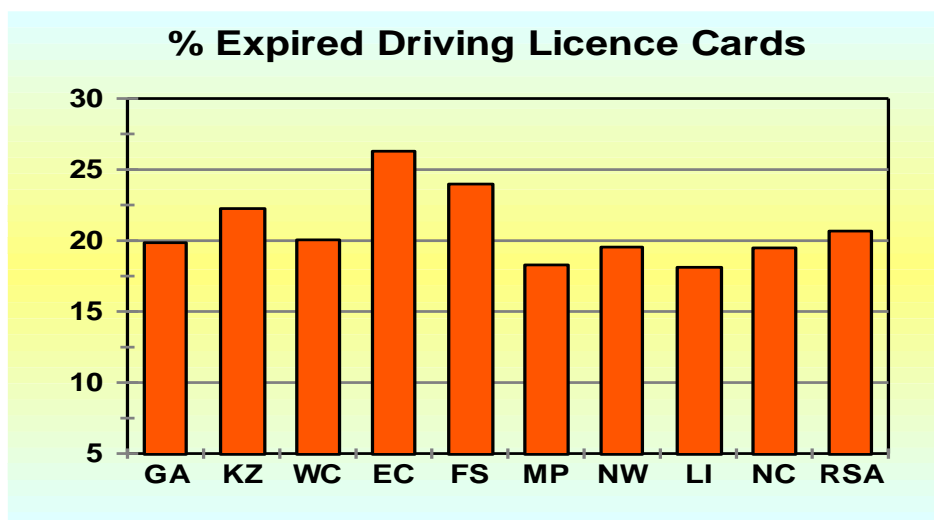


Figure 40: Percentage expired driving license cards

6.3.1 Professional Driving Permits Issued and Expired

6.3.1.1 Number of Professional Driving Permits Issued

The number of Professional Driving Permits (PrDP's) issued increased by 49 535 (4.46%) from 1 110 389 as at 30 September 2019 to 1 159 924 as at 30 September 2020. Detail on the number of PrDPs issued per category is given in table below and graphically reflected in the figure below.

Category	Sept 2019	Sept 2020	Change	% Change
G	8 073	8 151	78	0,97
P G	1 058 296	1 105 286	46 990	4,44
D G	142	123	-19	-13,38
D P G	43 878	46 364	2 486	5,67
Total	1 110 389	1 159 924	49 535	4,46

Table 24: Number of PrDP's issued

Professional Driving Permits (PrDPs)

G: Goods

P: Passengers

D: Dangerous goods

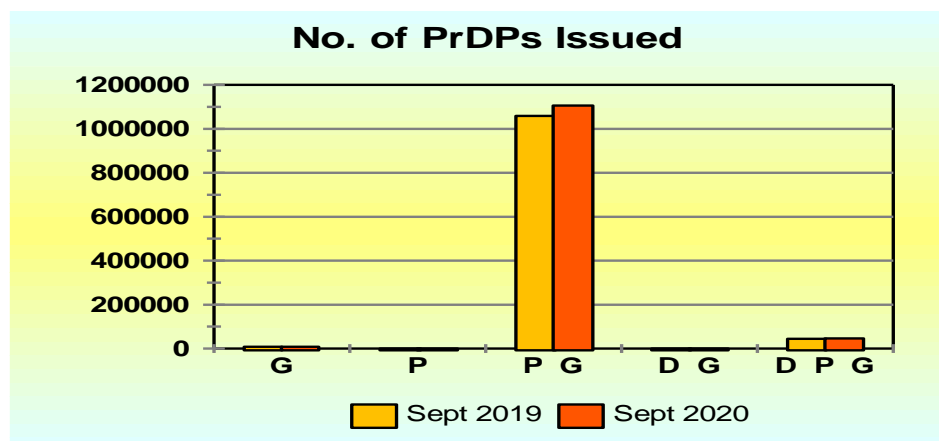


Figure 41: Number of PrDP's issued

Provincial information in this regard is given in the table below and the percentage change with regard to all categories of PrDP's issued per Province is reflected in the figure below.

Year	GA	KZ	WC	EC	FS	MP	NW	LI	NC	RSA
Sept 2019	298 373	197 103	159 567	91 276	67 387	107 780	54 130	108 950	25 823	1 110 389
Sept 2020	309 641	206 815	167 022	97 016	68 509	114 068	55 792	113 721	27 340	1 159 924
Change	11 268	9 712	7 455	5 740	1 122	6 288	1 662	4 771	1 517	49 535
% Change	3,78	4,93	4,67	6,29	1,67	5,83	3,07	4,38	5,87	4,46

Table 25: Number of professional driving permits (PrDP's) issued per province

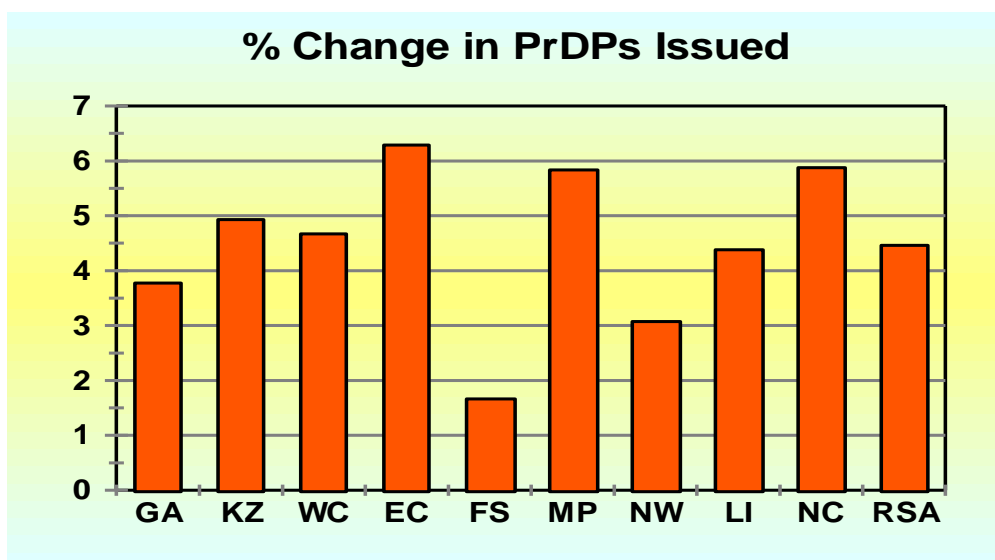


Figure 42: Percentage in PrDP's issued

6.3.2 Number of Expired PrDPs

The information in table below shows that as at 30 September 2020 there were 429 287 expired Professional Driving Permits (PrDPs) recorded on the National Traffic Information System (NaTIS). This figure represents 37.01% of all PrDPs issued. This information is also reflected in the figure below.

Category	GA	KZ	WC	EC	FS	MP	NW	LI	NC	RSA
On system	309 641	206 815	167 022	97 016	68 509	114 068	55 792	113 721	27 340	1 159 924
Not expired	181 625	128 647	109 030	62 107	47 808	76 080	33 651	74 624	17 065	730 637
Expired	128 016	78 168	57 992	34 909	20 701	37 988	22 141	39 097	10 275	429 287
% Expired	41,34	37,80	34,72	35,98	30,22	33,30	39,68	34,38	37,58	37,01

Table 26: Number of professional driving permits (PrDP's) issued and expired per province 2020

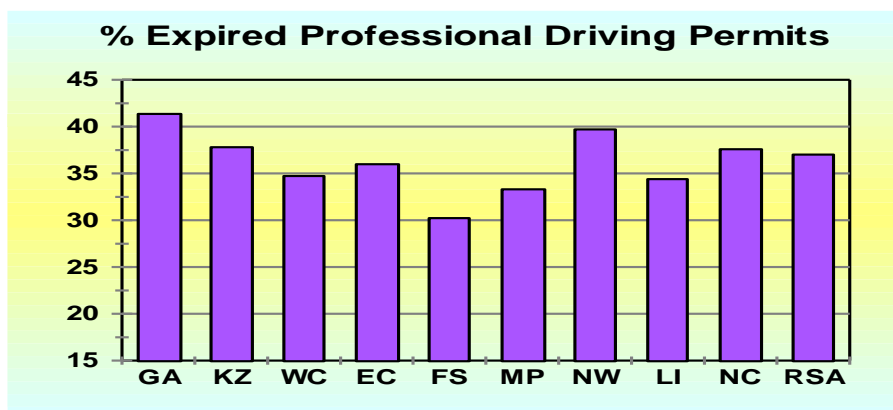


Figure 43: Percentage expired professional driving permits

The highest increase for expired PrDPs were recorded in Gauteng, North West, KwaZulu Natal and Northern Cape with 41.34%, 38.68%, 37.80% and 37.58% respectively.

Detailed information on the number of learner licences, driving licences and PrDPs per Province is provided in the tables under **Appendix C**.

Reviewed and Supported by

.....
Mr Emmanuel Phasha
GM: RTI

.....
Date

Recommended by

.....
Mr Kevin Kara-Vala
EM: RTI & T

.....
Date

Approved by

.....
Adv. Makhosini Msibi
CEO

.....
Date

APPENDIX-A

Sept 2019	Number of Registered Vehicles per Province									Total RSA
	GA	KZ	WC	EC	FS	MP	NW	LI	NC	
Motorised Veh's										
Motorcars	3 123 429	1 025 722	1 301 597	470 572	321 709	444 234	328 607	348 194	131 230	7 495 294
Minibuses	131 416	56 591	37 790	25 403	13 120	25 455	20 242	25 402	5 775	341 194
Buses	20 638	8 030	7 250	4 641	3 316	8 528	4 229	6 988	1 788	65 408
Motorcycles	141 160	31 042	85 918	21 739	18 388	18 363	12 913	9 049	7 944	346 516
LDV's - Bakkies	855 702	372 713	339 054	209 871	133 001	226 221	156 524	238 832	81 062	2 612 980
Trucks	139 868	49 782	46 664	22 494	22 021	47 434	17 438	26 402	9 045	381 148
Other & Unkwn	38 891	33 341	42 107	18 418	37 012	29 348	23 403	18 597	10 134	251 249
Sub-Total	4 451 104	1 577 221	1 860 380	773 138	548 567	799 583	563 356	673 464	246 978	11 493 789
Towed Veh's										
Caravans	37 770	7 068	18 338	5 154	7 367	9 990	6 190	5 504	2 738	100 119
Heavy Trailers	63 026	23 895	24 839	7 358	18 871	40 778	11 019	9 973	5 699	205 458
Light Trailers	339 736	82 872	150 298	58 153	63 657	66 417	54 458	43 731	29 762	889 084
Unknown	2 336	1 468	2 198	1 536	1 909	1 834	2 136	1 185	670	15 270
Sub-Total	442 868	115 303	195 673	72 201	91 804	119 019	73 803	60 393	38 869	1 209 931
All Vehicles	4 893 971	1 692 524	2 056 052	845 339	640 371	918 601	637 158	733 857	285 847	12 703 720

Sept 2020	Number of Registered Vehicles per Province									Total RSA
	GA	KZ	WC	EC	FS	MP	NW	LI	NC	
Motorised Veh's										
Motorcars	3 125 487	1 028 822	1 297 496	474 115	320 421	447 337	330 563	354 283	131 736	7 510 260
Minibuses	129 813	57 688	37 450	25 620	12 979	25 779	20 557	25 918	5 957	341 761
Buses	20 468	8 326	7 160	4 654	3 405	8 315	4 098	7 010	1 809	65 245
Motorcycles	140 139	30 116	85 124	21 300	17 914	17 458	12 522	8 767	7 556	340 896
LDV's - Bakkies	853 383	373 987	340 306	210 074	133 017	226 720	157 531	241 691	81 644	2 618 353
Trucks	140 166	50 283	46 331	22 563	22 518	44 246	17 286	26 955	9 055	379 403
Other & Unkwn	38 249	33 056	42 161	18 356	36 247	28 900	22 847	18 523	10 179	248 515
Sub-Total	4 447 705	1 582 278	1 856 028	776 682	546 501	798 755	565 404	683 147	247 936	11 504 433
Towed Veh's										
Caravans	36 894	6 813	18 401	5 083	7 160	9 762	6 078	5 464	2 698	98 353
Heavy Trailers	65 254	24 514	24 597	7 438	19 745	39 536	11 108	10 999	5 894	209 085
Light Trailers	337 764	82 006	151 514	58 525	63 131	66 328	54 159	44 033	29 920	887 380
Unknown	2 243	1 411	2 157	1 508	1 848	1 772	2 045	1 151	677	14 809
Sub-Total	442 155	114 744	196 669	72 554	91 884	117 398	73 390	61 647	39 189	1 209 627
All Vehicles	4 889 860	1 697 022	2 052 696	849 235	638 384	916 152	638 793	744 793	287 125	12 714 060

% Change Sep 2018-2019	Number of Registered Vehicles per Province									Total RSA
	GA	KZ	WC	EC	FS	MP	NW	LI	NC	
Motorised Vehicles										
Motorcars	0,07	0,30	-0,32	0,75	-0,40	0,70	0,60	1,75	0,39	0,20
Minibuses	-1,22	1,94	-0,90	0,85	-1,07	1,27	1,56	2,03	3,15	0,17
Buses	-0,82	3,69	-1,24	0,28	2,68	-2,50	-3,10	0,31	1,17	-0,25
Motorcycles	-0,72	-2,98	-0,92	-2,02	-2,58	-4,93	-3,03	-3,12	-4,88	-1,62
LDV's - Bakkies	-0,27	0,34	0,37	0,10	0,01	0,22	0,64	1,20	0,72	0,21
Trucks	0,21	1,01	-0,71	0,31	2,26	-6,72	-0,87	2,09	0,11	-0,46
Other & Unknown	-1,65	-0,85	0,13	-0,34	-2,07	-1,53	-2,38	-0,40	0,44	-1,09
Sub-Total	-0,08	0,32	-0,23	0,46	-0,38	-0,10	0,36	1,44	0,39	0,09
Towed Vehicles										
Caravans	-2,32	-3,61	0,34	-1,38	-2,81	-2,28	-1,81	-0,73	-1,46	-1,76
Heavy Trailers	3,54	2,59	-0,97	1,09	4,63	-3,05	0,81	10,29	3,42	1,77
Light Trailers	-0,58	-1,04	0,81	0,64	-0,83	-0,13	-0,55	0,69	0,53	-0,19
Unknown	-3,96	-3,88	-1,87	-1,86	-3,22	-3,38	-4,26	-2,91	1,04	-3,02
Sub-Total	-0,16	-0,48	0,51	0,49	0,09	-1,36	-0,56	2,08	0,82	-0,03
All Vehicles	-0,08	0,27	-0,16	0,46	-0,31	-0,27	0,26	1,49	0,45	0,08



APPENDIX B-1

Number of Un-Roadworthy Vehicles										
Sept 2019	GA	KZ	WC	EC	FS	MP	NW	LI	NC	RSA
Motorised Vehicles										
Motorcars	153 548	32 484	39 918	15 462	14 596	15 325	12 580	9 487	3 635	297 035
Minibuses	20 272	5 766	3 313	2 709	1 769	2 545	2 431	2 340	555	41 700
Buses	3 301	889	728	492	391	837	485	596	295	8 014
Motorcycles	17 479	3 496	6 549	1 711	2 066	2 967	1 784	1 276	807	38 135
LDV's - Bakkies	41 971	11 738	10 126	6 230	4 831	7 180	4 978	5 661	1 859	94 574
Trucks	20 066	6 503	4 545	3 135	3 980	5 714	2 797	3 389	1 746	51 875
Other & Unkwn	3 175	2 377	2 092	1 437	3 626	2 991	2 075	2 060	741	20 574
Sub-Total	259 812	63 253	67 271	31 176	31 259	37 559	27 130	24 809	9 638	551 907
Towed Vehicles										
Caravans	1 434	330	620	148	355	423	243	211	116	3 880
Heavy Trailers	7 549	2 682	2 260	835	2 563	4 046	1 202	1 041	748	22 926
Light Trailers	10 222	3 265	4 599	1 491	2 518	2 330	1 858	1 351	756	28 390
Unknown	126	142	86	90	106	131	109	56	39	885
Sub-Total	19 331	6 419	7 565	2 564	5 542	6 930	3 412	2 659	1 659	56 081
All Vehicles	279 143	69 672	74 836	33 740	36 801	44 489	30 542	27 468	11 297	607 988
Sept 2020	GA	KZ	WC	EC	FS	MP	NW	LI	NC	RSA
Motorised Vehicles										
Motorcars	168 123	33 767	37 976	15 755	14 192	14 548	12 105	9 235	3 687	309 388
Minibuses	22 527	7 260	3 644	2 965	2 019	2 834	2 601	2 516	686	47 052
Buses	4 008	1 510	849	719	529	1 009	556	736	379	10 295
Motorcycles	16 899	3 317	6 272	1 640	2 002	2 769	1 688	1 178	769	36 534
LDV's - Bakkies	40 094	11 817	9 371	6 065	4 620	6 482	4 764	5 303	1 794	90 310
Trucks	24 683	8 807	6 072	3 965	4 939	6 599	3 197	4 381	2 110	64 753
Other & Unkwn	19 751	16 595	23 697	7 055	19 018	12 834	8 026	7 365	4 054	118 395
Sub-Total	296 085	83 073	87 881	38 164	47 319	47 075	32 937	30 714	13 479	676 727
Towed Vehicles										
Caravans	1 457	340	658	149	327	404	277	205	126	3 943
Heavy Trailers	10 746	6 377	4 362	1 076	4 644	6 371	2 637	1 820	1 183	39 216
Light Trailers	10 696	4 084	6 942	1 968	3 995	2 590	2 346	1 522	1 213	35 356
Unknown	2 282	1 242	2 169	935	1 881	2 342	2 657	1 568	513	15 589
Sub-Total	25 181	12 043	14 131	4 128	10 847	11 707	7 917	5 115	3 035	94 104
All Vehicles	321 266	95 116	102 012	42 292	58 166	58 782	40 854	35 829	16 514	770 831
% Change	GA	KZ	WC	EC	FS	MP	NW	LI	NC	RSA
Motorised Vehicles										
Motorcars	9,49	3,95	-4,86	1,89	-2,77	-5,07	-3,78	-2,66	1,43	4,16
Minibuses	11,12	25,91	9,99	9,45	14,13	11,36	6,99	7,52	23,60	12,83
Buses	21,42	69,85	16,62	46,14	35,29	20,55	14,64	23,49	28,47	28,46
Motorcycles	-3,32	-5,12	-4,23	-4,15	-3,10	-6,67	-5,38	-7,68	-4,71	-4,20
LDV's - Bakkies	-4,47	0,67	-7,46	-2,65	-4,37	-9,72	-4,30	-6,32	-3,50	-4,51
Trucks	23,01	35,43	33,60	26,48	24,10	15,49	14,30	29,27	20,85	24,83
Other & Unkwn	522,08	598,15	1032,74	390,95	424,49	329,09	286,80	257,52	447,10	475,46
Sub-Total	13,96	31,33	30,64	22,41	51,38	25,34	21,40	23,80	39,85	22,62
Towed Vehicles										
Caravans	1,60	3,03	6,13	0,68	-7,89	-4,49	13,99	-2,84	8,62	1,62
Heavy Trailers	42,35	137,77	93,01	28,86	81,19	57,46	119,38	74,83	58,16	71,05
Light Trailers	4,64	25,08	50,95	31,99	58,66	11,16	26,26	12,66	60,45	24,54
Unknown	1711,11	774,65	2422,09	938,89	1674,53	1687,79	2337,61	2700,00	1215,38	1661,47
Sub-Total	30,26	87,61	86,79	61,00	95,72	68,93	132,03	92,37	82,94	67,80
All Vehicles	15,09	36,52	36,31	25,35	58,06	32,13	33,76	30,44	46,18	26,78

PPENDIX B-2

Number of Un-Licensed Vehicles										
Sept 2019	GA	KZ	WC	EC	FS	MP	NW	LI	NC	RSA
Motorised Vehicles										
Motorcars	114 130	35 818	36 093	21 767	12 258	19 418	13 622	15 567	5 311	273 984
Minibuses	6 787	1 951	1 185	1 066	472	839	835	886	203	14 224
Buses	471	140	112	108	59	188	158	142	45	1 423
Motorcycles	8 428	1 905	3 735	1 193	955	1 239	778	606	408	19 247
LDV's - Bakkies	26 463	12 477	7 111	8 788	3 647	8 099	5 316	9 569	2 239	83 709
Trucks	3 296	1 172	703	653	469	1 611	545	1 007	236	9 692
Other & Unkwn	970	939	567	480	898	911	662	670	182	6 279
Sub-Total	160 545	54 402	49 506	34 055	18 758	32 305	21 916	28 447	8 624	408 558
Towed Vehicles										
Caravans	1 024	209	366	173	253	312	185	184	83	2 789
Heavy Trailers	868	360	194	107	210	634	193	200	80	2 846
Light Trailers	14 222	3 703	3 934	2 356	2 127	2 684	2 064	1 801	974	33 865
Unknown	141	101	96	95	114	133	155	54	38	927
Sub-Total	16 255	4 373	4 590	2 731	2 704	3 763	2 597	2 239	1 175	40 427
All Vehicles	176 800	58 775	54 096	36 786	21 462	36 068	24 513	30 686	9 799	448 985
Sept 2020	GA	KZ	WC	EC	FS	MP	NW	LI	NC	RSA
Motorised Vehicles										
Motorcars	286 148	97 235	119 423	45 507	29 951	45 241	32 373	33 173	11 492	700 543
Minibuses	18 368	6 306	3 411	2 454	1 415	2 310	2 201	2 287	574	39 326
Buses	1 856	491	352	293	180	636	439	483	187	4 917
Motorcycles	17 897	3 885	10 836	2 465	2 112	2 406	1 654	1 211	920	43 386
LDV's - Bakkies	69 331	34 517	24 994	18 768	10 457	19 510	13 185	20 154	5 945	216 861
Trucks	8 809	3 639	2 225	1 786	1 379	3 653	1 311	2 360	651	25 813
Other & Unkwn	3 161	2 822	2 339	1 199	2 457	2 181	1 547	1 322	925	17 953
Sub-Total	405 570	148 895	163 580	72 472	47 951	75 937	52 710	60 990	20 694	1 048 799
Towed Vehicles										
Caravans	2 852	583	1 249	415	571	752	460	429	233	7 544
Heavy Trailers	3 084	1 627	907	395	842	2 302	550	504	313	10 524
Light Trailers	37 111	9 629	14 514	5 999	5 631	6 498	5 290	4 287	3 056	92 015
Unknown	436	257	324	275	302	279	353	138	147	2 511
Sub-Total	43 483	12 096	16 994	7 084	7 346	9 831	6 653	5 358	3 749	112 594
All Vehicles	449 053	160 991	180 574	79 556	55 297	85 768	59 363	66 348	24 443	1 161 393
% Change	GA	KZ	WC	EC	FS	MP	NW	LI	NC	RSA
Motorised Vehicles										
Motorcars	150,72	171,47	230,88	109,06	144,34	132,98	137,65	113,10	116,38	155,69
Minibuses	170,64	223,22	187,85	130,21	199,79	175,33	163,59	158,13	182,76	176,48
Buses	294,06	250,71	214,29	171,30	205,08	238,30	177,85	240,14	315,56	245,54
Motorcycles	112,35	103,94	190,12	106,62	121,15	94,19	112,60	99,83	125,49	125,42
LDV's - Bakkies	161,99	176,65	251,48	113,56	186,73	140,89	148,02	110,62	165,52	159,07
Trucks	167,26	210,49	216,50	173,51	194,03	126,75	140,55	134,36	175,85	166,33
Other & Unkwn	225,88	200,53	312,52	149,79	173,61	139,41	133,69	97,31	408,24	185,92
Sub-Total	152,62	173,69	230,42	112,81	155,63	135,06	140,51	114,40	139,96	156,71
Towed Vehicles										
Caravans	178,52	178,95	241,26	139,88	125,69	141,03	148,65	133,15	180,72	170,49
Heavy Trailers	255,30	351,94	367,53	269,16	300,95	263,09	184,97	152,00	291,25	269,78
Light Trailers	160,94	160,03	268,94	154,63	164,74	142,10	156,30	138,03	213,76	171,71
Unknown	209,22	154,46	237,50	189,47	164,91	109,77	127,74	155,56	286,84	170,87
Sub-Total	167,51	176,61	270,24	159,39	171,67	161,25	156,18	139,30	219,06	178,51
All Vehicles	153,99	173,91	233,80	116,27	157,65	137,80	142,17	116,22	149,44	158,67

APPENDIX B-3

Number of Both Un-Roadworthy & Un-Licensed Vehicles										
Sept 2019	GA	KZ	WC	EC	FS	MP	NW	LI	NC	RSA
Motorised Vehicles										
Motorcars	11 360	3 738	4 671	2 712	1 941	2 460	1 482	1 779	624	30 767
Minibuses	2 092	560	340	296	200	266	278	271	49	4 352
Buses	128	45	53	30	26	57	52	36	20	447
Motorcycles	1 745	380	636	210	201	339	184	156	84	3 935
LDV's - Bakkies	2 813	1 271	1 040	979	469	966	561	897	253	9 249
Trucks	826	340	246	162	193	416	174	261	111	2 729
Other & Unkwn	188	133	59	50	150	133	110	99	27	949
Sub-Total	19 152	6 467	7 045	4 439	3 180	4 637	2 841	3 499	1 168	52 428
Towed Vehicles										
Caravans	84	20	29	12	32	39	15	25	9	265
Heavy Trailers	166	76	61	13	72	160	51	48	17	664
Light Trailers	929	265	318	136	159	210	135	131	46	2 329
Unknown	12	8	3	3	11	15	4	3	4	63
Sub-Total	1 191	369	411	164	274	424	205	207	76	3 321
All Vehicles	20 343	6 836	7 456	4 603	3 454	5 061	3 046	3 706	1 244	55 749
Sept 2020	GA	KZ	WC	EC	FS	MP	NW	LI	NC	RSA
Motorised Vehicles										
Motorcars	16 424	5 188	6 262	3 395	2 826	3 148	1 965	2 140	798	42 146
Minibuses	4 144	1 159	612	525	332	467	448	516	118	8 321
Buses	512	115	91	72	52	134	78	105	51	1 210
Motorcycles	3 038	622	1 233	318	406	545	332	239	157	6 890
LDV's - Bakkies	4 451	2 000	1 575	1 193	774	1 346	756	1 193	359	13 647
Trucks	1 744	630	462	434	424	716	333	512	245	5 500
Other & Unkwn	1 847	1 604	1 432	521	1 518	1 131	656	658	418	9 785
Sub-Total	32 160	11 318	11 667	6 458	6 332	7 487	4 568	5 363	2 146	87 499
Towed Vehicles										
Caravans	182	61	101	20	47	49	43	30	22	555
Heavy Trailers	514	561	218	87	252	454	166	128	116	2 496
Light Trailers	2 012	722	840	291	456	433	348	235	200	5 537
Unknown	199	96	107	59	162	161	204	90	59	1 137
Sub-Total	2 907	1 440	1 266	457	917	1 097	761	483	397	9 725
All Vehicles	35 067	12 758	12 933	6 915	7 249	8 584	5 329	5 846	2 543	97 224
% Change	GA	KZ	WC	EC	FS	MP	NW	LI	NC	RSA
Motorised Vehicles										
Motorcars	44,58	38,79	34,06	25,18	45,60	27,97	32,59	20,29	27,88	36,98
Minibuses	98,09	106,96	80,00	77,36	66,00	75,56	61,15	90,41	140,82	91,20
Buses	300,00	155,56	71,70	140,00	100,00	135,09	50,00	191,67	155,00	170,69
Motorcycles	74,10	63,68	93,87	51,43	101,99	60,77	80,43	53,21	86,90	75,10
LDV's - Bakkies	58,23	57,36	51,44	21,86	65,03	39,34	34,76	33,00	41,90	47,55
Trucks	111,14	85,29	87,80	167,90	119,69	72,12	91,38	96,17	120,72	101,54
Other & Unkwn	882,45	1106,02	2327,12	942,00	912,00	750,38	496,36	564,65	1448,15	931,09
Sub-Total	67,92	75,01	65,61	45,48	99,12	61,46	60,79	53,27	83,73	66,89
Towed Vehicles										
Caravans	116,67	205,00	248,28	66,67	46,88	25,64	186,67	20,00	144,44	109,43
Heavy Trailers	209,64	638,16	257,38	569,23	250,00	183,75	225,49	166,67	582,35	275,90
Light Trailers	116,58	172,45	164,15	113,97	186,79	106,19	157,78	79,39	334,78	137,74
Unknown	1558,33	1100,00	3466,67	1866,67	1372,73	973,33	5000,00	2900,00	1375,00	1704,76
Sub-Total	144,08	290,24	208,03	178,66	234,67	158,73	271,22	133,33	422,37	192,83
All Vehicles	72,38	86,63	73,46	50,23	109,87	69,61	74,95	57,74	104,42	74,40

PPENDIX C-1

Sept 2019	Number of Learners Licences Issued per Province									
Category	GA	KZ	WC	EC	FS	MP	NW	LI	NC	RSA
1	13 238	3 416	11 639	2 273	2 116	2 208	1 514	1 346	929	38 679
2	63 318	29 201	76 045	24 132	13 459	7 613	7 821	4 250	4 716	230 555
3	273 682	160 521	88 978	74 566	51 276	97 672	51 989	94 027	22 768	915 479
Total	350 238	193 138	176 662	100 971	66 851	107 493	61 324	99 623	28 413	1 184 713
Sept 2020	Number of Learners Licences Issued per Province									
Category	GA	KZ	WC	EC	FS	MP	NW	LI	NC	RSA
1	11 223	2 717	8 726	1 715	1 708	1 731	1 165	1 124	678	30 787
2	50 001	21 719	60 710	18 293	9 883	5 519	6 011	3 184	3 836	179 156
3	238 401	123 765	71 292	61 513	37 861	77 852	43 397	76 914	18 174	749 169
Total	299 625	148 201	140 728	81 521	49 452	85 102	50 573	81 222	22 688	959 112
% Change	Number of Learners Licences Issued per Province									
Category	GA	KZ	WC	EC	FS	MP	NW	LI	NC	RSA
1	-15,22	-20,46	-25,03	-24,55	-19,28	-21,60	-23,05	-16,49	-27,02	-20,40
2	-21,03	-25,62	-20,17	-24,20	-26,57	-27,51	-23,14	-25,08	-18,66	-22,29
3	-12,89	-22,90	-19,88	-17,51	-26,16	-20,29	-16,53	-18,20	-20,18	-18,17
Total	-14,45	-23,27	-20,34	-19,26	-26,03	-20,83	-17,53	-18,47	-20,15	-19,04

Learner Licences :

Category 1 : Motorcycle

Category 2 : Light Motor Vehicle

Category 3 : Heavy Motor Vehicle

APPENDIX C-2

Sept 2019	Number of Driving Licences Issued per Province									
Category	GA	KZ	WC	EC	FS	MP	NW	LI	NC	RSA
A	178 919	61 949	119 571	35 347	26 519	23 335	19 957	15 499	9 602	490 698
A1	43 541	13 012	29 104	9 177	8 824	6 511	6 259	3 812	2 388	122 628
B	1 118 904	485 726	639 027	250 858	152 489	126 595	120 627	78 994	54 797	3 028 017
C	4 894	4 933	5 323	1 216	540	3 101	1 720	1 844	480	24 051
C1	1 496 742	750 742	240 857	248 561	181 913	504 727	251 232	659 678	78 854	4 413 306
EB	1 285 521	575 677	816 895	313 731	175 267	158 511	140 258	109 059	65 053	3 639 972
EC	324 934	191 773	128 722	76 835	84 622	123 023	58 347	104 989	26 414	1 119 659
EC1	218 120	69 599	50 174	46 455	34 951	52 065	36 625	65 956	11 407	585 352
Total	4 671 575	2 153 411	2 029 673	982 180	665 125	997 868	635 025	1 039 831	248 995	13 423 683
Sept 2020	Number of Driving Licences Issued per Province									
Category	GA	KZ	WC	EC	FS	MP	NW	LI	NC	RSA
A	180 658	62 415	121 774	35 660	26 545	23 440	20 019	15 631	9 651	495 793
A1	43 399	13 000	29 348	9 206	8 776	6 470	6 219	3 797	2 374	122 589
B	1 155 619	495 792	659 449	257 707	155 686	128 554	122 421	80 288	56 242	3 111 758
C	4 942	4 952	5 516	1 237	542	3 182	1 680	1 871	493	24 415
C1	1 589 591	791 806	253 606	264 996	188 935	531 956	262 328	687 660	83 152	4 654 030
EB	1 285 008	575 601	821 576	314 459	174 796	157 863	139 370	109 234	64 978	3 642 885
EC	335 594	198 026	131 715	78 837	86 020	128 083	59 133	107 928	26 845	1 152 181
EC1	217 504	69 533	50 078	46 557	34 858	52 008	36 106	66 175	11 391	584 210
Total	4 812 315	2 211 125	2 073 062	1 008 659	676 158	1 031 556	647 276	1 072 584	255 126	13 787 861
% Change	Number of Driving Licences Issued per Province									
Category	GA	KZ	WC	EC	FS	MP	NW	LI	NC	RSA
A	0,97	0,75	1,84	0,89	0,10	0,45	0,31	0,85	0,51	1,04
A1	-0,33	-0,09	0,84	0,32	-0,54	-0,63	-0,64	-0,39	-0,59	-0,03
B	3,28	2,07	3,20	2,73	2,10	1,55	1,49	1,64	2,64	2,77
C	0,98	0,39	3,63	1,73	0,37	2,61	-2,33	1,46	2,71	1,51
C1	6,20	5,47	5,29	6,61	3,86	5,39	4,42	4,24	5,45	5,45
EB	-0,04	-0,01	0,57	0,23	-0,27	-0,41	-0,63	0,16	-0,12	0,08
EC	3,28	3,26	2,33	2,61	1,65	4,11	1,35	2,80	1,63	2,90
EC1	-0,28	-0,09	-0,19	0,22	-0,27	-0,11	-1,42	0,33	-0,14	-0,20
Total	3,01	2,68	2,14	2,70	1,66	3,38	1,93	3,15	2,46	2,71

Driving Licences:

A	Motorcycle > 125 cub.cm	A1	Motorcycle < 125 cub.cm	B	Motor vehicle < 3,5000 kg
C	Motorvehicle > 16,000 kg	C1	Motor vehicle 3,500 – 16,000 kg	EB	Articulated motor vehicle <16,000 kg
		EC	Articulated vehicle > 16,000 kg	EC1	Articulated vehicle 3,500 – 16,000 kg

APPENDIX C-3

Sept 2019	Number of Professional Driving Permits (PrDP's) Issued per Province									
Category	GA	KZ	WC	EC	FS	MP	NW	LI	NC	RSA
G	1 472	1 530	1 418	672	805	784	364	681	347	8 073
P G	282 200	184 264	153 636	88 115	63 393	103 326	52 456	106 201	24 705	1 058 296
D G	22	9	19	16	17	5	14	37	3	142
D P G	14 679	11 300	4 494	2 473	3 172	3 665	1 296	2 031	768	43 878
Total	298 373	197 103	159 567	91 276	67 387	107 780	54 130	108 950	25 823	1 110 389
Sept 2020										
Category	GA	KZ	WC	EC	FS	MP	NW	LI	NC	RSA
G	1 530	1 528	1 442	660	751	821	402	682	335	8 151
P G	292 464	193 347	160 901	93 742	64 488	109 219	54 056	110 862	26 207	1 105 286
D G	20	14	13	7	12	9	14	25	9	123
D P G	15 627	11 926	4 666	2 607	3 258	4 019	1 320	2 152	789	46 364
Total	309 641	206 815	167 022	97 016	68 509	114 068	55 792	113 721	27 340	1 159 924
% Change										
Category	GA	KZ	WC	EC	FS	MP	NW	LI	NC	RSA
G	3,94	-0,13	1,69	-1,79	-6,71	4,72	10,44	0,15	-3,46	0,97
P G	3,64	4,93	4,73	6,39	1,73	5,70	3,05	4,39	6,08	4,44
D G	-9,09	55,56	-31,58	-56,25	-29,41	80,00	0,00	-32,43	200,00	-13,38
D P G	6,46	5,54	3,83	5,42	2,71	9,66	1,85	5,96	2,73	5,67
Total	3,78	4,93	4,67	6,29	1,67	5,83	3,07	4,38	5,87	4,46

Professional Driving Permits (PrDPs)

G : Goods

P : Passengers

D : Dangerous goods



Road Traffic
Management Corporation

Road Traffic Management Corporation
Eco Origin Office Park, Block F
349 Witch-Hazel Street
Highveld Ext 79
Tell: 012 999 5200

.....
Want to know more about the RTMC - visit www.rtmc.co.za

