



**Road Traffic**  
Management Corporation

*State of Road Safety Report*  
*Quarterly Report: April - June 2021*



**transport**

Department:  
Transport  
REPUBLIC OF SOUTH AFRICA



## Table of contents

<b>Table of contents</b>	<b>ii</b>
<b>List of Figures</b>	<b>4</b>
<b>List of acronyms and abbreviations</b>	<b>6</b>
1. OBJECTIVE OF THE REPORT	7
2. EXECUTIVE SUMMARY	8
<b>SECTION A</b>	<b>10</b>
1. INTRODUCTION	10
2. METHODOLOGY	10
3. ROAD FATAL CRASHES	12
4. ROAD FATALITIES	21
5. MAJOR CRASHES INVESTIGATED	27
<b>SECTION B</b>	<b>32</b>
1. INTRODUCTION	32
2. VEHICLE POPULATION	32
3. DRIVER POPULATION	37
<b>APPENDIX A</b>	<b>46</b>

## List of Tables

<b>Table 1: Number of fatal crashes per Province .....</b>	<b>12</b>
<b>Table 2: Comparison of fatalities per province for the two quarters .....</b>	<b>21</b>
<b>Table 3: Vehicle types involved in major crashes during the 1<sup>st</sup> Quarters of the 2019 and 2021 .....</b>	<b>30</b>
<b>Table 4: Contributory factors for 1<sup>st</sup> quarter of 2019 and 2021 .....</b>	<b>31</b>
Table 5: Number of registered vehicles per type.....	32
Table 6: Number of registered vehicles per province .....	34
Table 7: Number of learner licenses issued.....	37
Table 8: Number of learner licenses issued per province.....	38
Table 9: Number of driving licenses issued .....	39
Table 10: Number and percentage of driving licenses issued per category .....	40
Table 11: Number of driving licenses issued per province .....	41
Table 12: Number of PrDP's issued .....	42
Table 12: Number of professional driving permits (PrDP's) issued per province .....	43

## List of Figures

Figure 1: Percentage distribution of fatal crashes per province .....	13
<b>Figure 2: Percentage distribution of fatal crashes per day of week .....</b>	<b>14</b>
<b>Figure 3: Percentage distribution of fatal crashes per time of day .....</b>	<b>14</b>
<b>Figure 4: Percentage distribution of crash types .....</b>	<b>15</b>
<b>Figure 5: Percentage distribution of fatal crashes per vehicle type .....</b>	<b>16</b>
<b>Figure 6: Comparison of contributory factors .....</b>	<b>17</b>
<b>Figure 7: Percentage distribution of human factors .....</b>	<b>18</b>
<b>Figure 8: Percentage distribution of road and environmental factors .....</b>	<b>19</b>
Figure 9: Percentage distribution for vehicle factor .....	19
<b>Figure 10: Percentage distribution of fatalities per road user .....</b>	<b>22</b>
Figure 11: Percentage distribution of fatalities per gender.....	22
Figure 12: Percentage distribution of fatalities per race .....	23
<b>Figure 13: Percentage distribution of fatalities per age for drivers .....</b>	<b>24</b>
Figure 14: Percentage distribution of fatalities per age for passengers .....	25
Figure 15: Percentage distribution of fatalities per age for pedestrians.....	25
<b>Figure 16: Percentage distribution of fatalities per age for cyclists.....</b>	<b>26</b>
Figure 17: Major crash casualties during 1st quarters .....	27
Figure 18: Major crash per province.....	28
Figure 19: Fatalities per province.....	29
Figure 20: Crash types that occurred for major crashes investigated .....	30
Figure 21: Percentage Annual Growth in vehicles .....	33
Figure 22: Percentage annual change in motorised vehicles .....	34
Figure 23: Percentage Annual Growth in Vehicle Population .....	35
Figure 24: Percentage Vehicle Registered per province.....	35

Figure 25: Number of learner license issued .....	37
Figure 26: Percentage change in learner licenses issued per province .....	38
Figure 27: Number of driving licenses issued .....	40
Figure 28: Percentage change in driving licenses issued .....	41
Figure 29: Number of PrDP's issued .....	42
Figure 30: Percentage in PrDP's issued per province .....	43

## List of acronyms and abbreviations

CHOCOR	:	CULPABLE HOMICIDE CRIME: OBSERVATION REPORT
EC	:	EASTERN CAPE
GA	:	GAUTENG
FS	:	FREE STATE
LI	:	LIMPOPO
MP	:	MPUMALANGA
NC	:	NORTHERN CAPE
NW	:	NORTH WEST
WC	:	WESTERN CAPE
KZN	:	KWAZULU NATAL
SAPS	:	SOUTH AFRICAN POLICE SERVICE
NATIS	:	NATIONAL TRAFFIC INFORMATION SYSTEM

## **1. OBJECTIVE OF THE REPORT**

This report is aimed at achieving the following objectives:

- To provide final road traffic fatal crashes and fatalities statistics based on the Culpable Homicide Crash: Observation Report (CHoCOR) Forms; and
- To present statistics on registered vehicles, un-roadworthy vehicles, un-licenced vehicles, driving licence and professional driving permits issued.

## **2. EXECUTIVE SUMMARY**

The report seeks to provide the final road crash statistics. The performance is for the period between April – June 2021. The performance per each focus areas have been provided below.

### ***Road Crashes Data***

A total number of 3 224 fatalities were recorded for the period between April to June 2021 from 2 774 fatal crashes. In comparison for fatal crashes an increase of 19% has been recorded and similarly for fatalities an increase of 12% has been recorded.

A total number of twenty-one (21) major crashes were reported and investigated during this period. One-hundred and twenty-five (125) persons were killed, and one-hundred and fifty-one (151) persons sustained injuries in the major crashes.

### ***Vehicle and driver population***

The number of registered vehicles increased by 322 614 (2.56%) from 12 590 560 on 30 June 2019 to 12 913 174 vehicles on 30 June 2021.

The number of learner driving licenses issued decreased by 242 551 (20.58%) from 1 178 622 on 30 June 2019 to 936 071 on 30 June 2021.



The number of driving licenses issued increased by 867 366 (6.52%) from 13 293 656 on 30 June 2019 to 14 161 022 on 30 June 2021.

## **SECTION A**

### **1. INTRODUCTION**

This report is based on information about fatal crashes that were reported to police stations between April and June 2019 and 2021 using the CHoCOR Forms. In addition, the report includes information about registered vehicles, driving licenses and professional driving permits issued from the National Traffic Information System (NaTIS). Furthermore, it includes information about population growth using the 2021 mid-year population estimates from Statistics South Africa (Stats SA).

### **2. METHODOLOGY**

#### **2.1 Road crash data collection methodology**

The Culpable Homicide Crash Observation Report (CHoCOR) form is used to collect fatal crashes data on daily basis. South African Police Service (SAPS) is the primary source of the fatal crashes data. SAPS provide the Corporation with a list of all recorded fatal crashes (CAS list) and further to this the Corporation receive the CHoCOR forms from various police stations. Road Traffic Management Corporation captures, processes and verifies the data to compile a report.

#### **2.2 Crash Data Flow**

Data is collected through the CHoCOR forms. The forms are then submitted to the Corporation either by fax, email or through the phone.

### **2.3 Data processing**

The data is captured, processed, and verified for the compilation of the consolidated statistical report. There is a continuous engagement with provinces for validation purpose.

### **2.4 Limitations**

The road traffic information contained in the report is mainly based on the fatal crashes only. There is still a need for in-depth research to be conducted to collect scientific base facts to complement the administrative data.

### **2.5 Instruments**

The Culpable Homicide Crash Observation Report (CHoCOR) forms are being used by Road Traffic Information unit to record fatality data on daily basis.

### 3. ROAD FATAL CRASHES

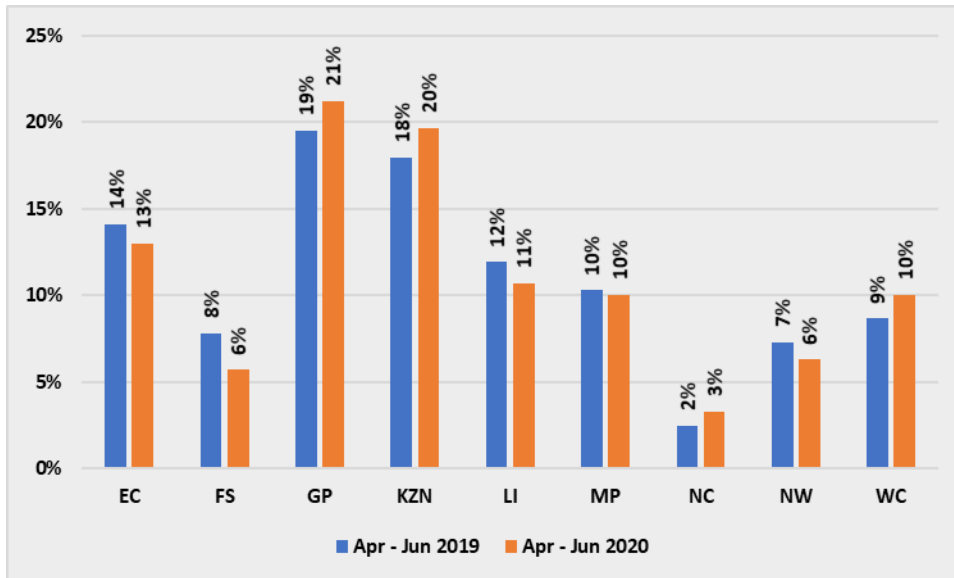
The section covers the data in relation to fatal road crashes. The section will encompass the number of fatal crashes and fatalities, contributory factors, fatality data per road user group and major crashes.

#### 3.1 Number of fatal crashes

The table below provides a comparison during the first quarters in 2019 and 2021. An increase of 436 (19%) has been recorded in comparison to the two quarters of 2019 and 2021 nationally. On a provincial level, all the nine (9) provinces recorded an increase in this regard. The highest figure in the absolute figures was recorded for KwaZulu Natal with 166 fatal crashes followed by Gauteng with 104 fatal crashes.

Number of Fatal Crashes per Province										
Period	EC	FS	GP	KZN	LI	MP	NC	NW	WC	RSA
Apr-Jun 2019	324	133	484	380	282	266	68	171	230	<b>2 338</b>
Apr-Jun 2021	361	158	588	546	297	279	91	175	279	<b>2 774</b>
Change	37	25	104	166	15	13	23	4	49	<b>436</b>
% Change	11	19	21	44	5	5	34	2	21	<b>19</b>

**Table 1: Number of fatal crashes per Province**



**Figure 1: Percentage distribution of fatal crashes per province**

The figure above provides percentage distribution of fatal crashes per province. The provinces with the highest contribution of more than 15% were Gauteng and KwaZulu-Natal 21% and 20% respectively for 2021.

### 3.1.1 Fatal Crashes per Day of Week

The details of the crashes per day of the week is given in the figure below. Friday, Saturday, and Sunday remain the most affected day of the week by fatal crashes for both quarters in 2019 and 2021. However, a reduction of 3% has been recorded for Saturday whilst a slight increase has been recorded for Sunday.

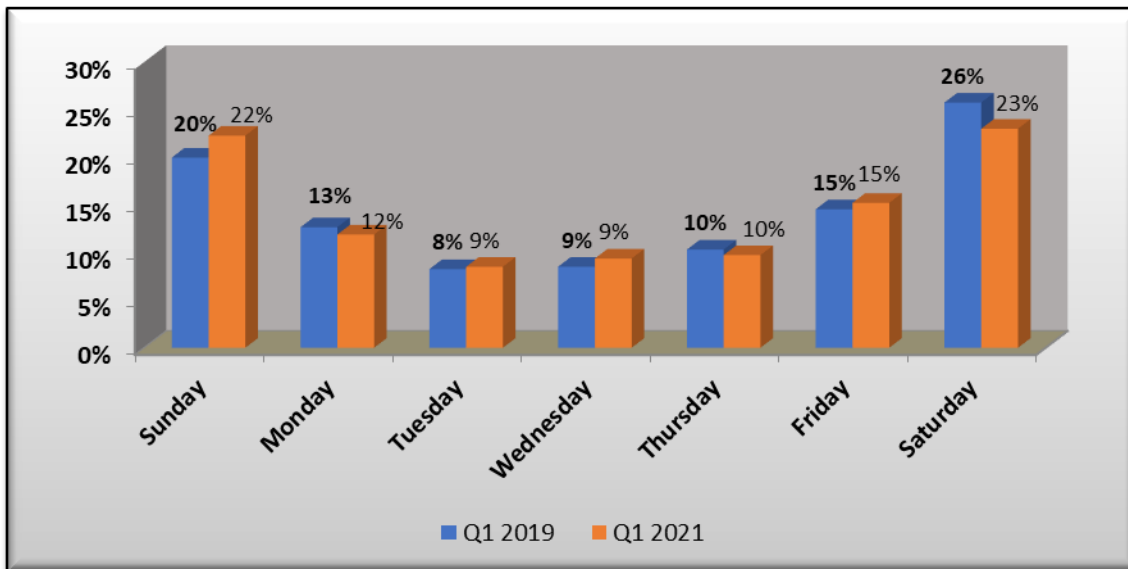


Figure 2: Percentage distribution of fatal crashes per day of week

### 3.1.2 Fatal Crashes per time of day

The percentage of fatal crashes per time of day for the period under review is reflected in the figure below.

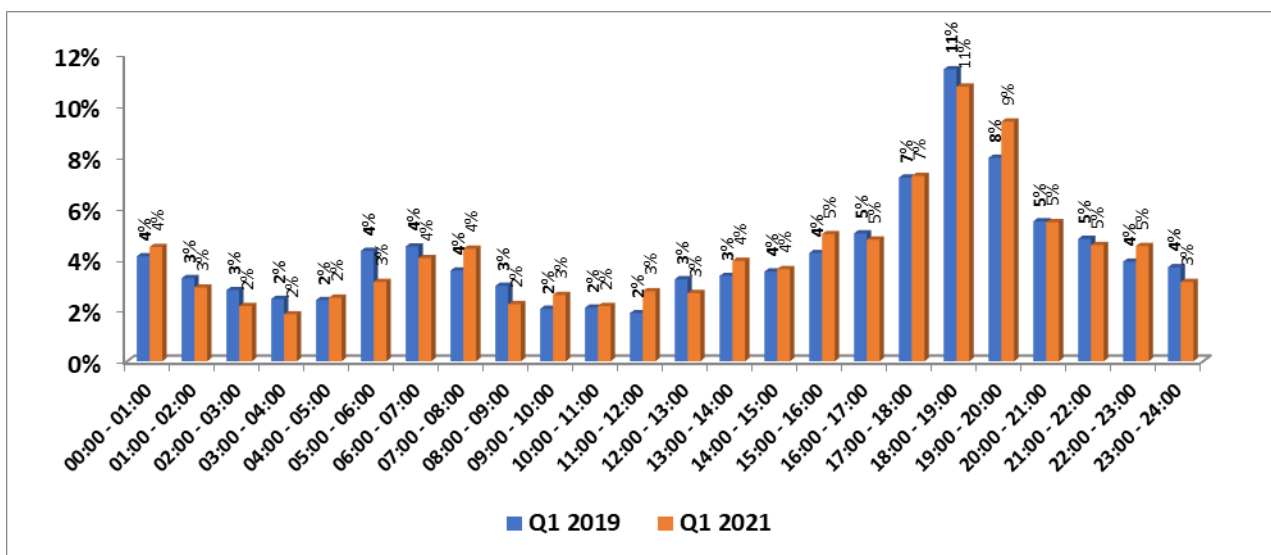
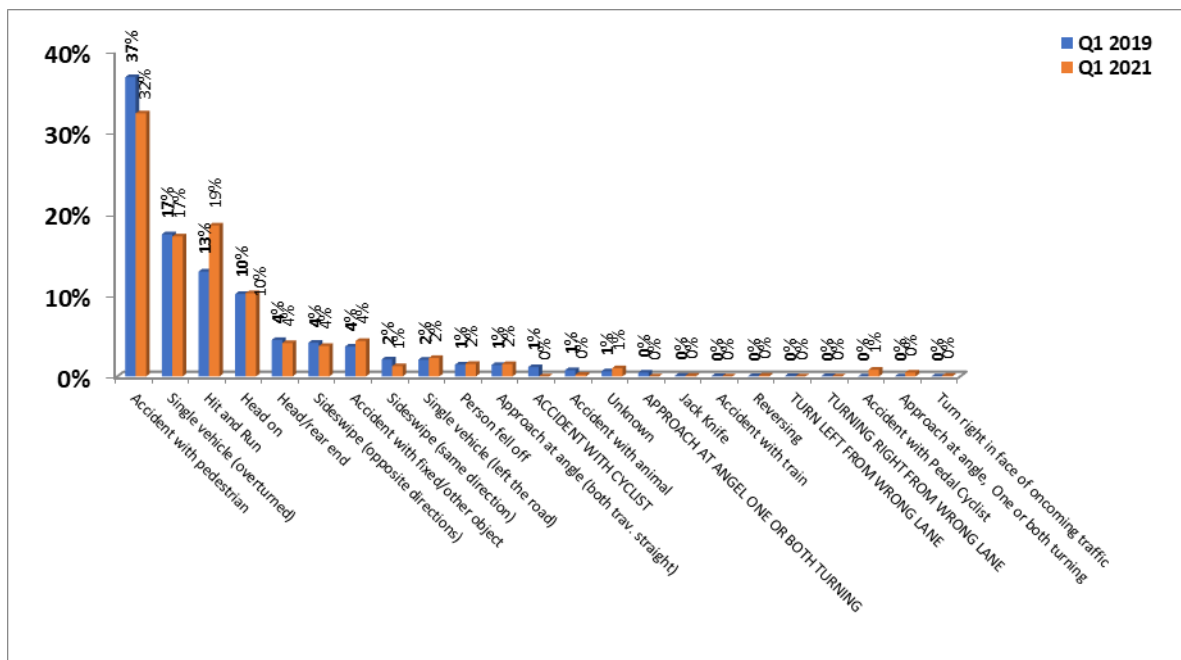


Figure 3: Percentage distribution of fatal crashes per time of day

The figure above depicts a comparison between fatal crashes per time of day of quarter for 2019 and 2021 period. In comparison, slot 18:00 to 19:00 remains to be the highest with more than 10,5% for both periods under review. The time slot between 19:00 to 20:00 has recorded a slight increase of 1% compared to the previous year.

### 3.1.3 Fatal crashes per crash type

The percentage contribution of fatal crashes per crash type are reflected in the figure below.



**Figure 4: Percentage distribution of crash types**

The figure above depicts that most crashes occurred due to crashes with pedestrians, hit and run and single vehicle overturned. A contribution of 37% for 2019 and 32% for 2021 was recorded for crashes involving pedestrians, which shows a decrease of 5%. Followed by hit and run with the highest of 19% for 2021 and single vehicle overturned with a contribution of 17%.

### 3.1.4 Fatal crashes per vehicle type

The percentage contribution of various vehicles involved in the fatal crashes are reflected in the figure below.

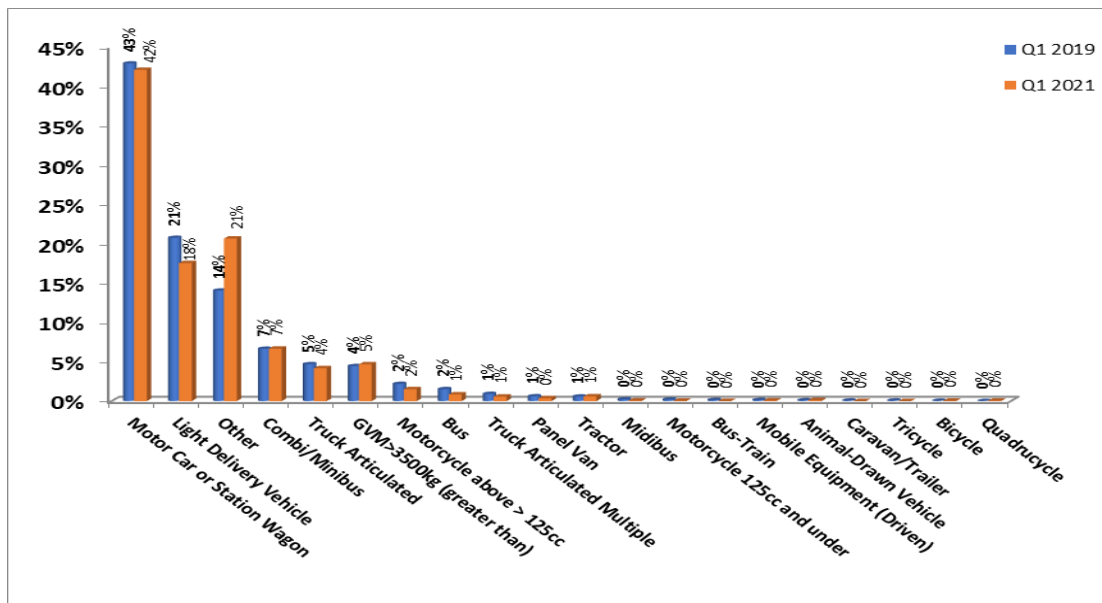


Figure 5: Percentage distribution of fatal crashes per vehicle type

The vehicle types that contributed the highest to fatal crashes were motorcars and LDV's with contributions of 42% and 18% respectively by June 2021. The two vehicle types may contribute to high number of fatalities for passengers.



### 3.2 Contributory factors

The contributory factors for fatal crashes are classified as follows: human factors (defined as a stable, general human abilities and limitations that are valid for all users regardless); vehicle factors (are more focussed on the vehicle itself and they cover issues around mechanical failures; and environment (include limited visibility, poorly marked roads, missing road signs, sudden changes in road infrastructure, gravel road, the state of the road and weather conditions).

The fatal crashes for April to June 2021 showed that human factors contributed 84% as compared to 88% recorded during April to June 2019. The roads and environmental factors recorded 8% in 2019 and 12% in 2021 that showed a significant increase of 4%.

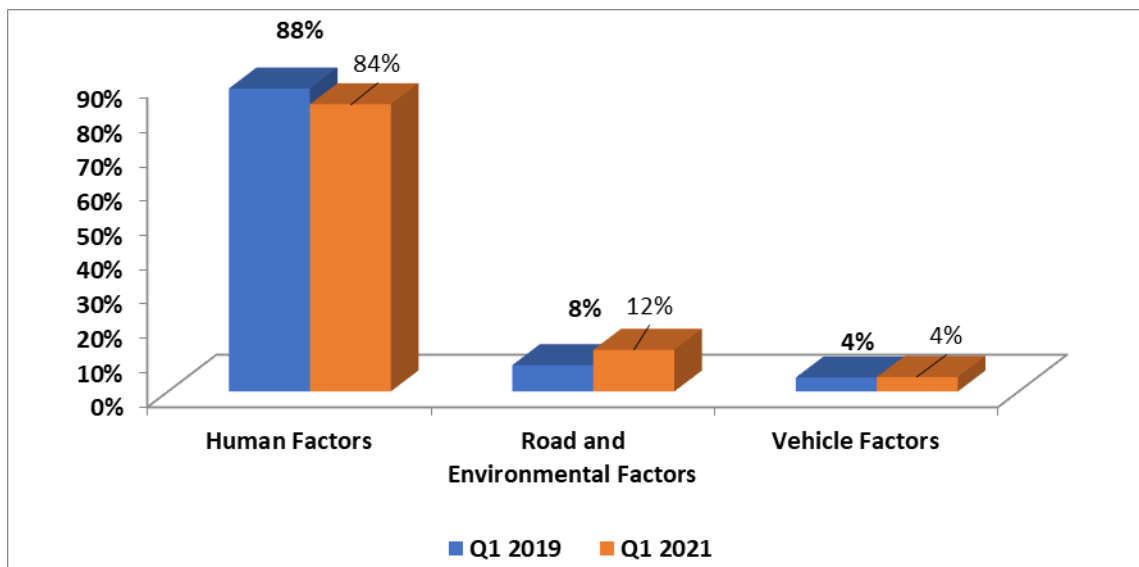
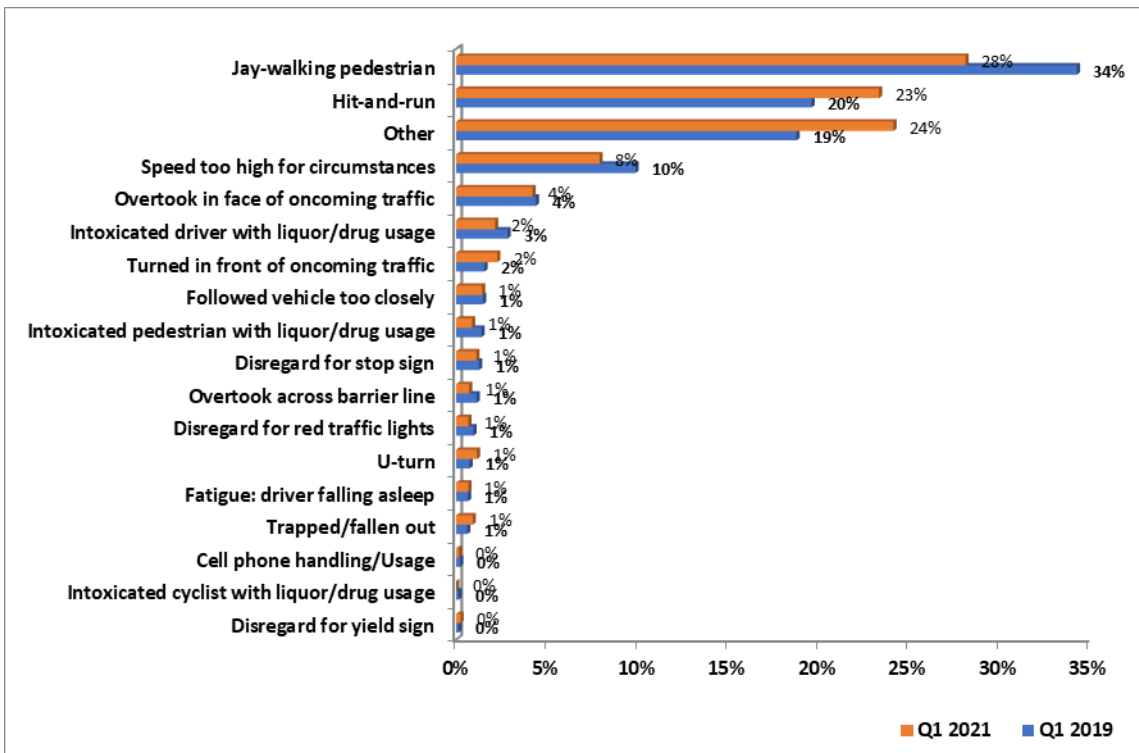


Figure 6: Comparison of contributory factors

The human factors remained a challenge compared to other factors. The vehicle factors remained the same with 7% for both years.



**Figure 7: Percentage distribution of human factors**

The figure above shows that jay-walking contribution to fatal crashes has decreased from 34% in 2019 to 28% in 2021. This was followed by hit and run with a contribution of 20% in 2019 and 23% in 2021. The jay-walking and hit and run as depicted above correlate to a high number of fatalities for pedestrians.

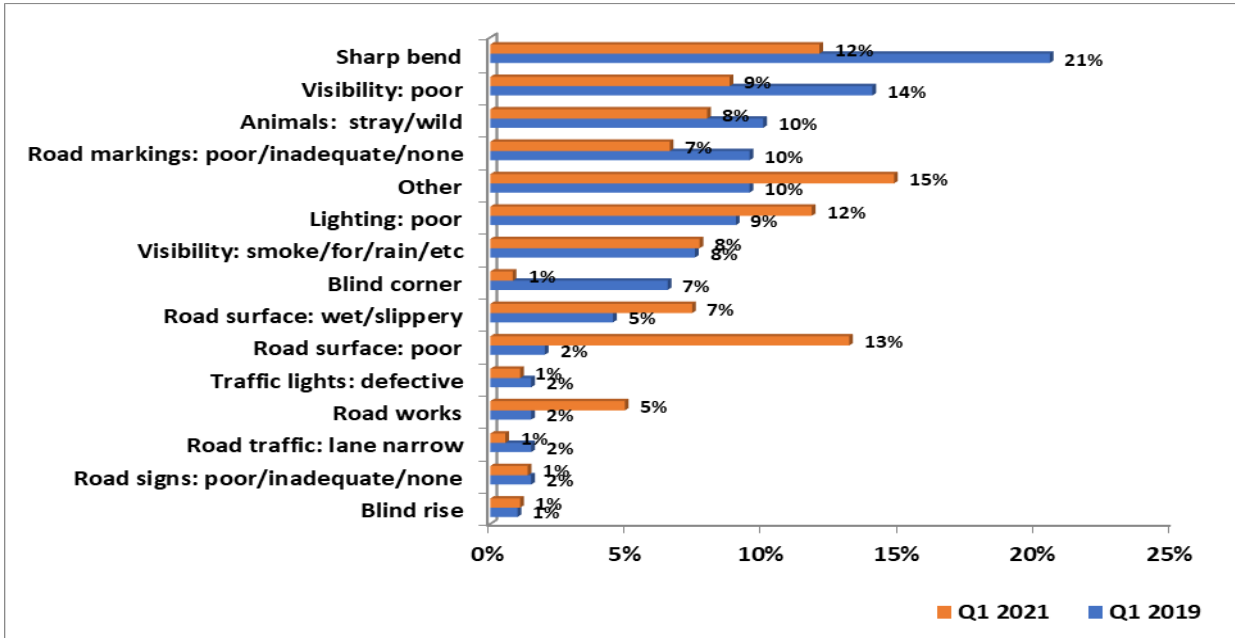


Figure 8: Percentage distribution of road and environmental factors

The figure above depicts that most fatal crashes occurred because of sharp bend which contributed 21% in 2019 and 12% in 2021, followed by road surface being poor and lightning poor for 2021.

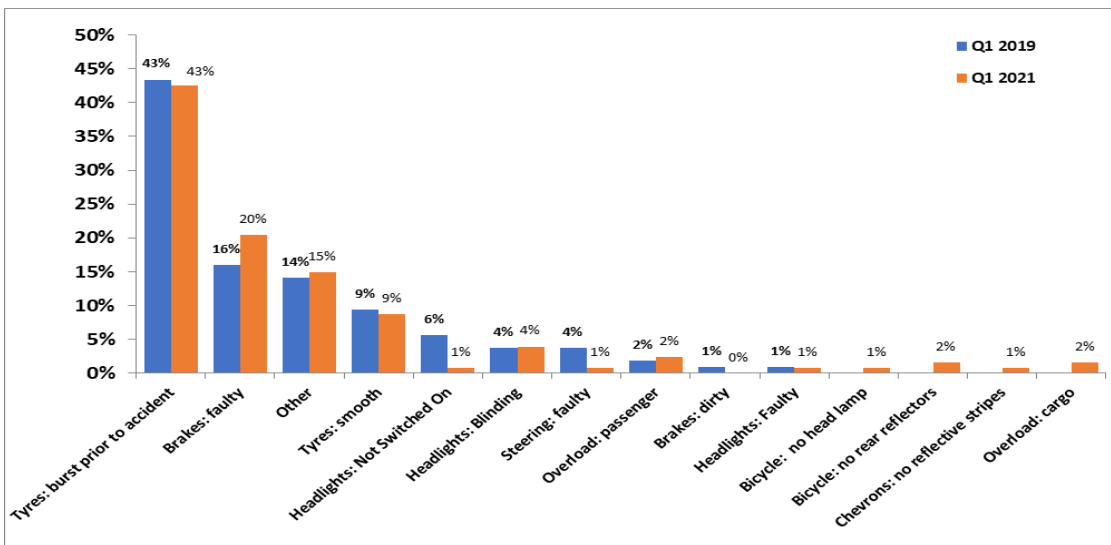


Figure 9: Percentage distribution for vehicle factor

The figure above shows that most crashes occurred because of tyre burst prior to crashes with a contribution of above 43% for both years respectively. Furthermore, the contribution of brakes being at fault increased by 4% from 16% in 2019 to 20% in 2021.

## 4. ROAD FATALITIES

The section covers the data in relation to road fatalities. Fatalities are defined as when a person or persons that are killed during or immediately after a crash, or death within 30 days after a crash happened as a direct result on such crash. The section will encompass the number of fatalities and percentage distribution per road user, gender, race and per age.

### 4.1 Number of fatalities per province

Number of Fatalities per Province										
Quarter 3	EC	FS	GP	KZN	LI	MP	NC	NW	WC	RSA
Apr - Jun 2019	384	190	529	460	401	330	88	213	281	2 876
Apr - Jun 2020	435	186	657	606	366	338	120	196	320	3 224
Change	51	-4	128	146	-35	8	32	-17	39	348
% Change	13	-2	24	32	-9	2	36	-8	14	12

**Table 2: Comparison of fatalities per province for the two quarters**

The table above shows a comparison of fatalities per province for the two quarters in 2019 and 2021. An increase in the number of fatalities is depicted from 2 879 in 2019 to 3 224 in 2021 which resulted with an increase of 12% nationally. With exception of Free State, Limpopo and North West all other provinces recorded an increases in this regard.

## 4.2 Number of Fatalities per Road User Group

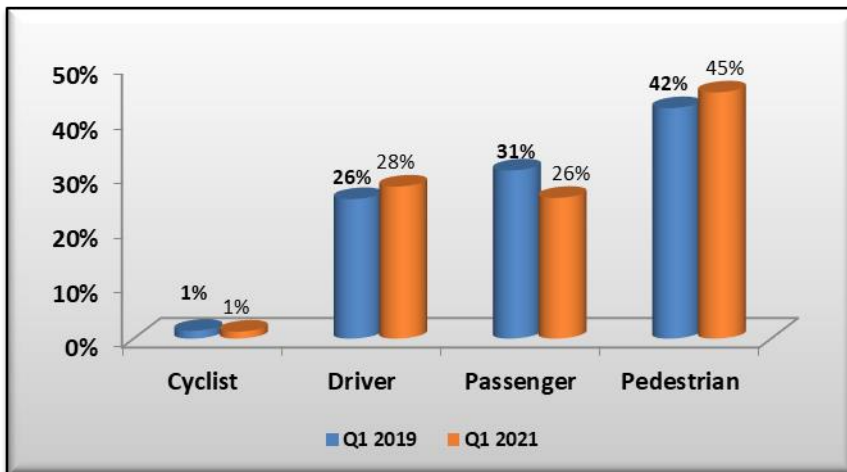


Figure 10: Percentage distribution of fatalities per road user

The percentage distribution of fatalities per road user groups are reflected in the figure above. The pedestrians contributed about 42% in 2019 and 45% in 2021, of which depicts an increase of 3% in comparison of the two periods. However, a downward trend with 5% has been recorded for passengers. The drivers recorded an increase of 2% from 26% in 2019 to 28% in 2021.

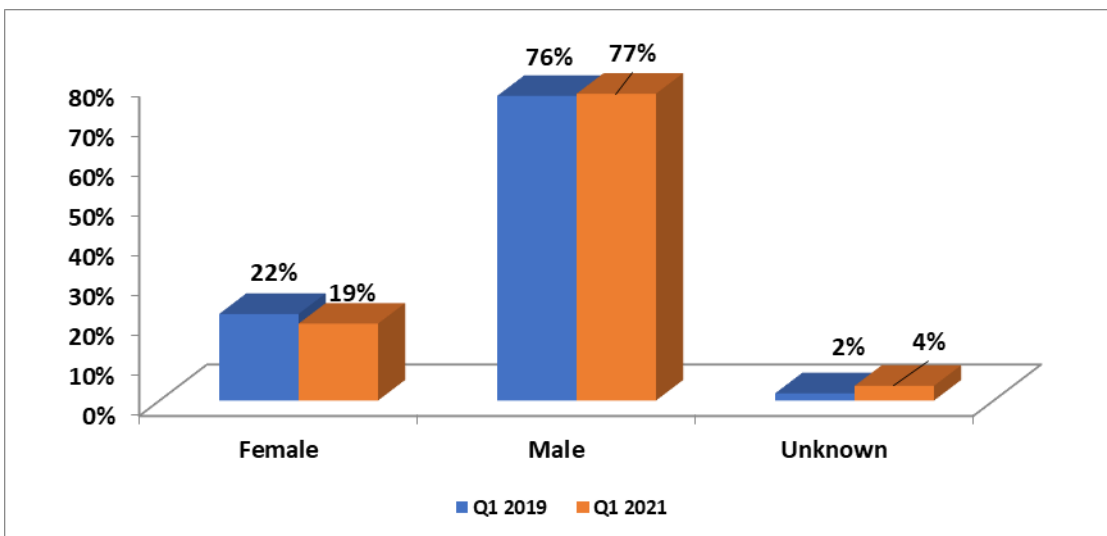
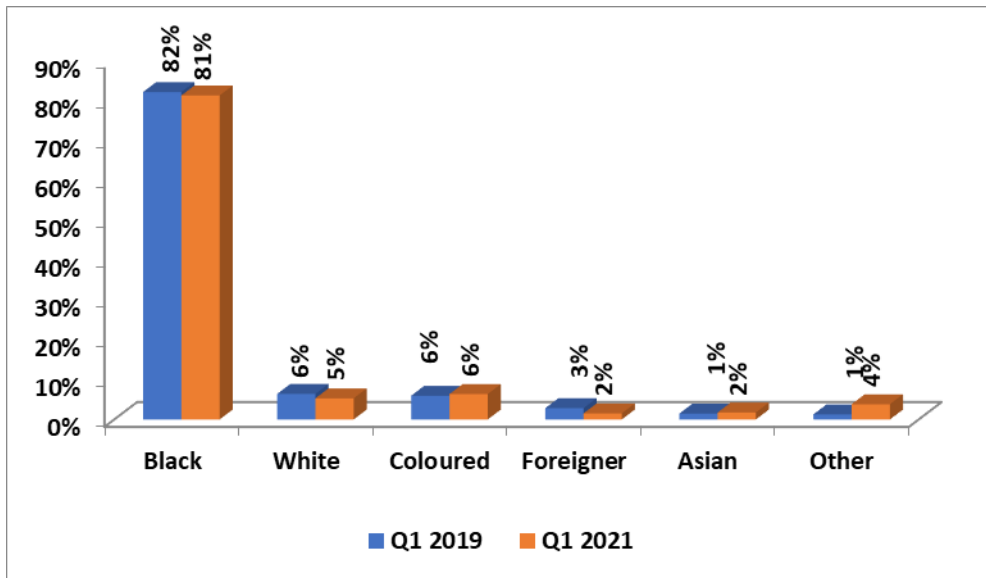


Figure 11: Percentage distribution of fatalities per gender

The figure above depicts trends for fatalities per gender for the two quarters. The trends shows that the males contribution increased by 1% from 76% in 2019 to 77% in 2021 whilst females decreased by 3%.



**Figure 12: Percentage distribution of fatalities per race**

The figure above shows that fatalities relating to blacks are very high in comparison to the other races.

Blacks contributed 82% to the total fatalities in 2019 and 81% in 2021 that showed a slight increase of 1%. Followed by whites with a contribution of 6% in 2019 and 5% in 2021 that showed a slight decrease of 1%.

### 4.3 Road user group fatalities per age group

The figures below provide information regarding the fatalities per age and per road user group for the period April to June 2019 and 2021. The information is categorised per road user group (Driver, Passenger, Pedestrian and Cyclists).

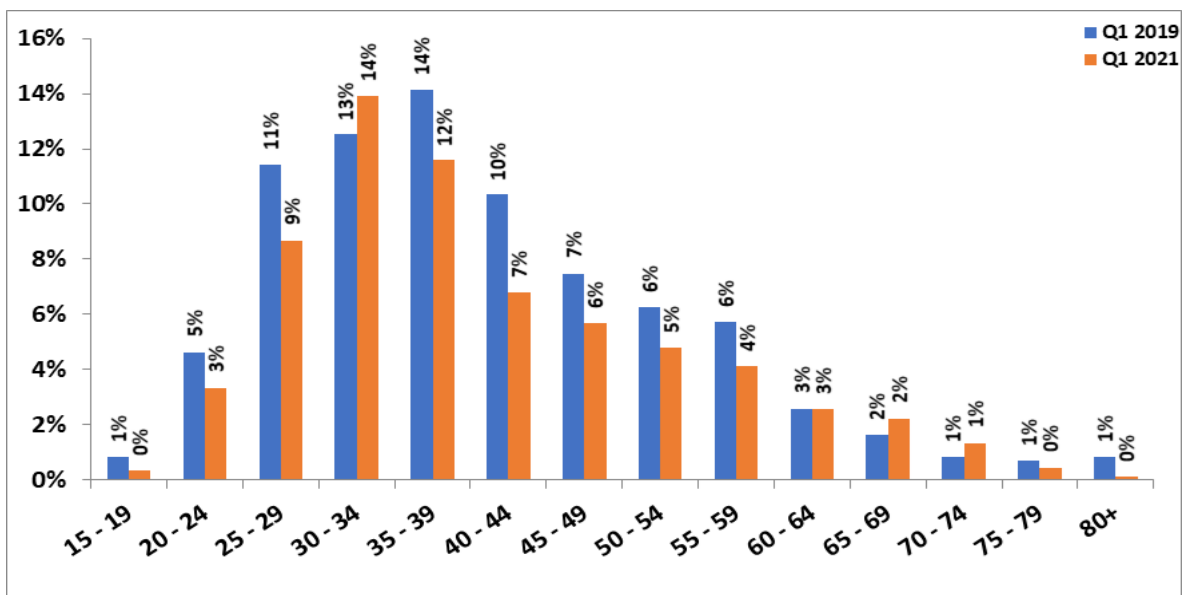
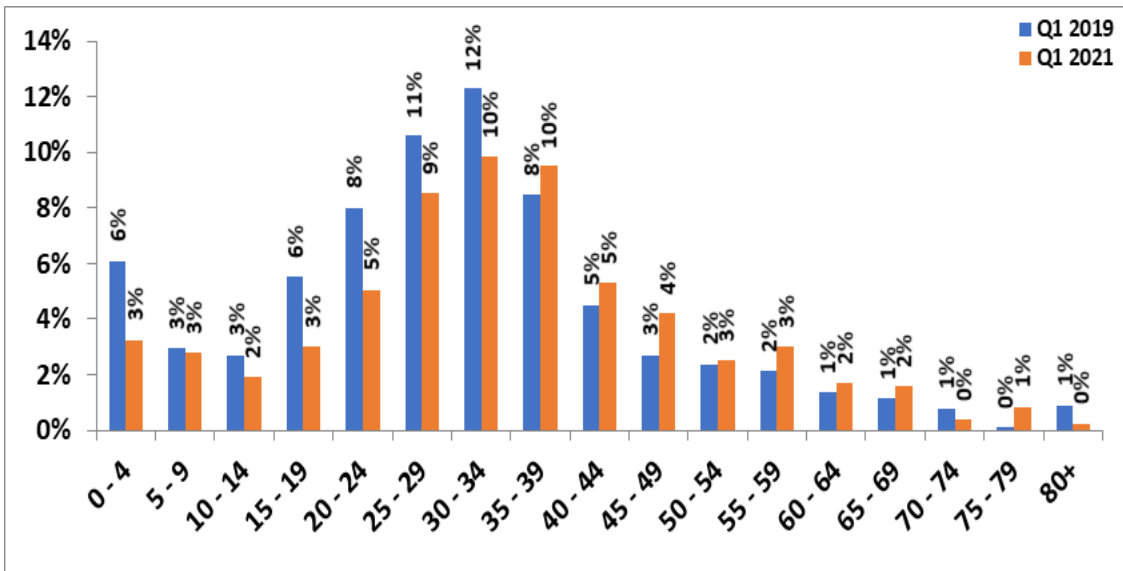


Figure 13: Percentage distribution of fatalities per age for drivers

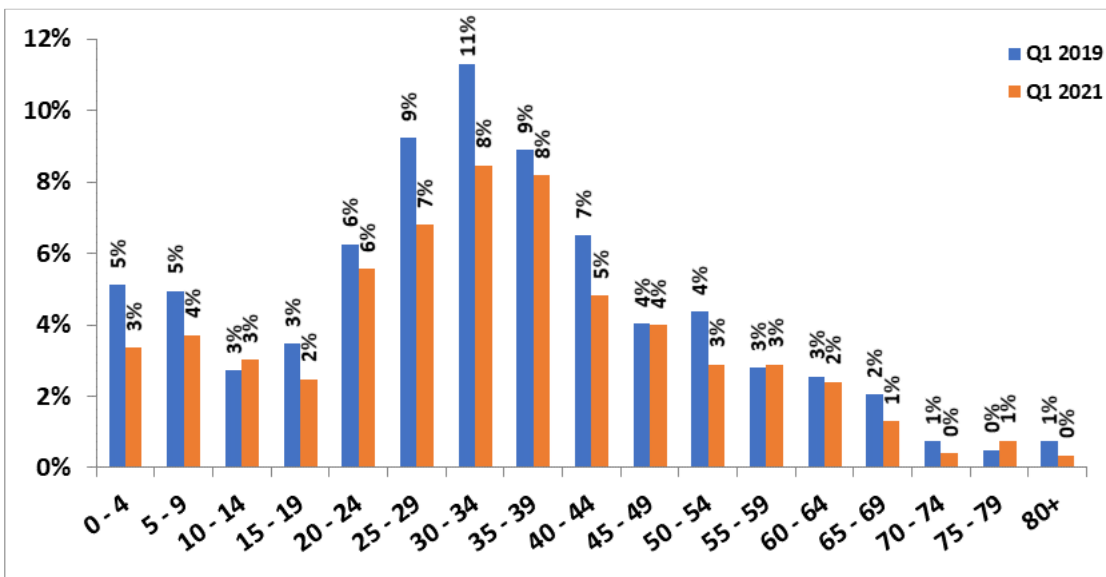
The figure above shows that the highest fatalities for drivers were recorded from age group 25 to 44 years. At least a reduction has been observed between this age group with exception of age group between 30 – 34 years. Generally a slight decrease has been recorded for most age groups.





**Figure 14: Percentage distribution of fatalities per age for passengers**

The figure above indicates that most fatalities for passengers were recorded between age group 30-34 years. A reduction has been recorded for age group between 25-29 even though they have the highest contribution as well. An increase has been recorded for age group between 35 to 39 years.



**Figure 15: Percentage distribution of fatalities per age for pedestrians**

The figure above indicates that most fatalities for pedestrians were recorded between the ages 30 to 34 years. However, generally reductions have been observed for most age groups.

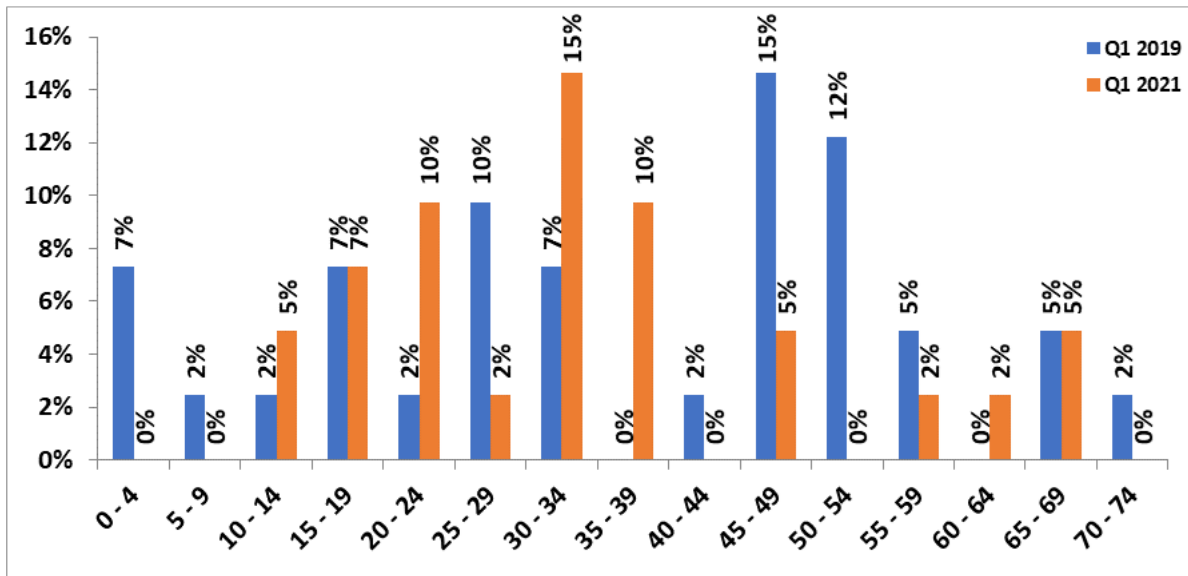


Figure 16: Percentage distribution of fatalities per age for cyclists

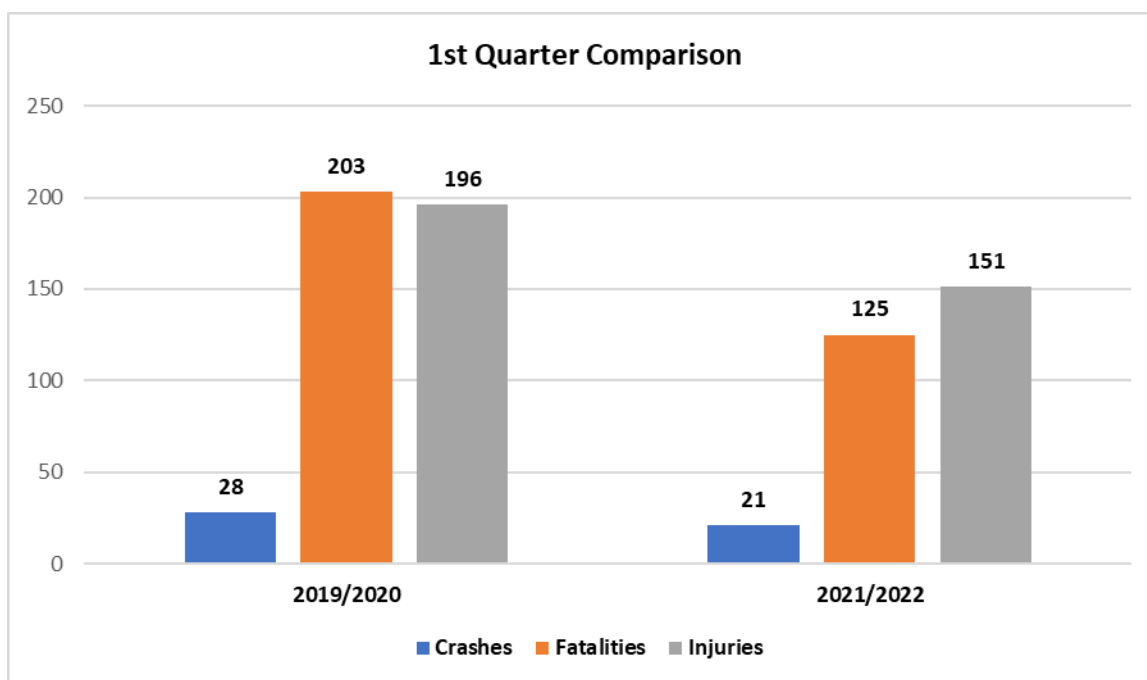
The figure above indicates that most fatalities for cyclists were recorded between age group 30 to 34 years with an increase of 8%. It's a concern that for age group between 20 – 24 years an increase of 8% has been recorded as well. Age group between 35 – 39 years has recorded an increase from 0% in 2019 to 10% in 2021.

## 5. MAJOR CRASHES INVESTIGATED

A total number of twenty-one (21) major crashes were reported and investigated during this period. One-hundred and twenty-five (125) persons were killed, and one-hundred and fifty-one (151) persons sustained injuries in the major crashes.

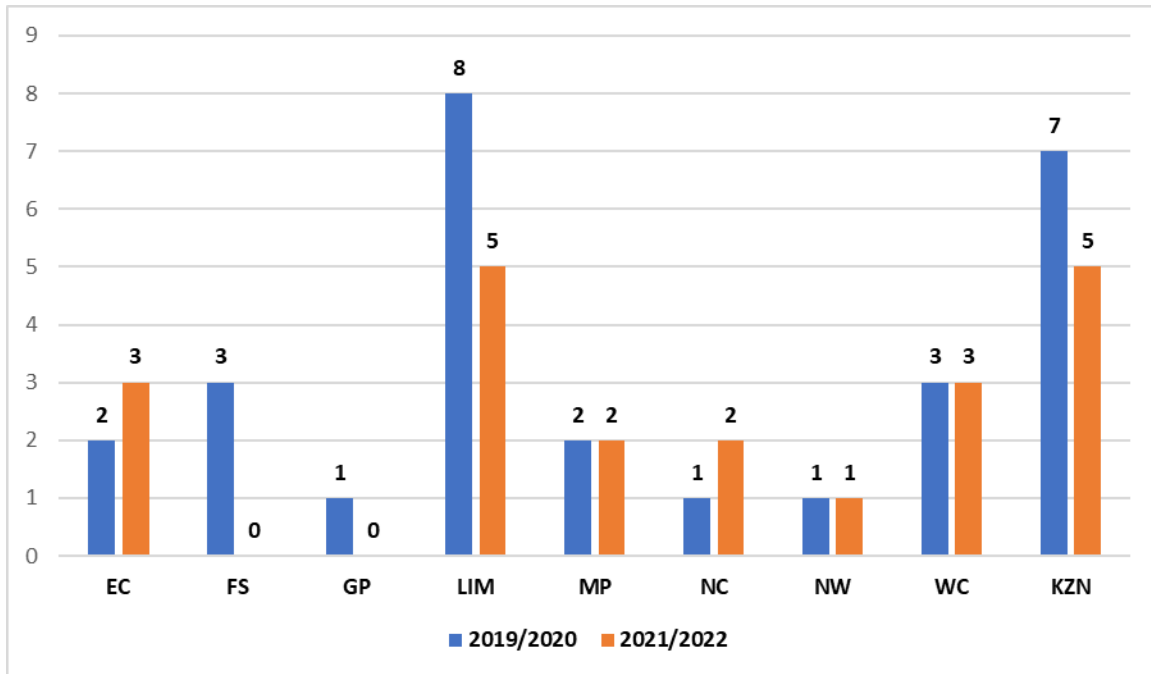
The below chart indicates the number of crashes and casualties sustained during the 1<sup>st</sup> Quarter for 2019 (28 crashes and 399 casualties) compared to that sustained during the 1<sup>st</sup> Quarter for 2021 (21 crashes and 276 casualties).

The figure below provides comparison of the number of major crashes reported and investigated and casualties during the first quarters in 2019 and 2021.

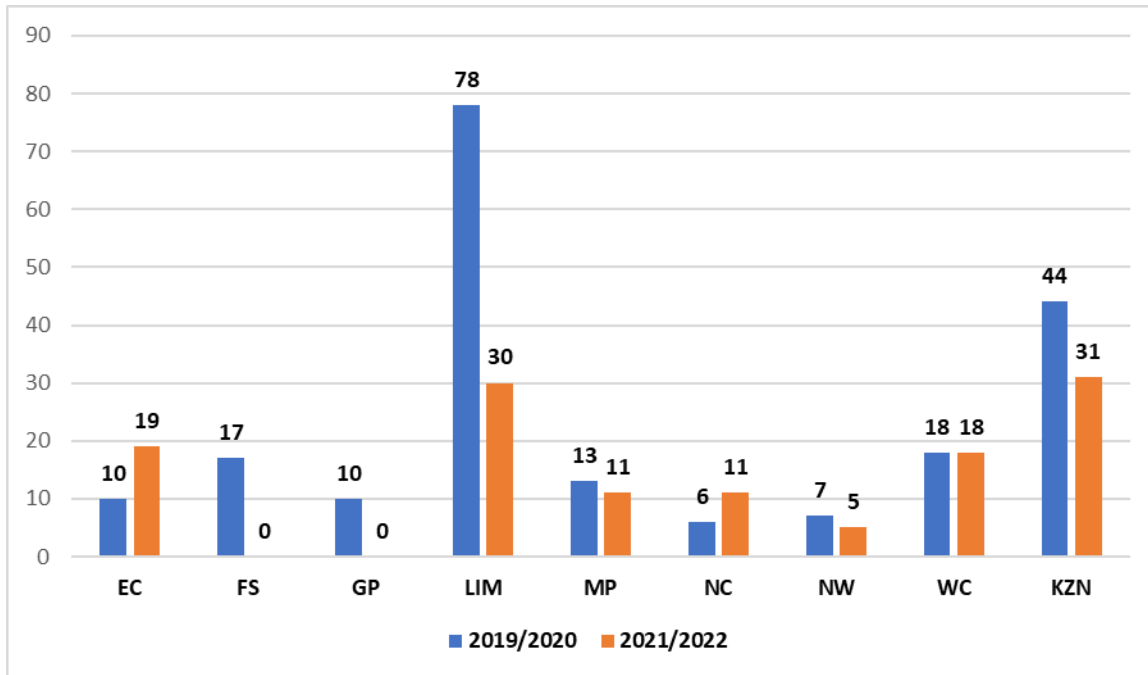


**Figure 17: Major crash casualties during 1st quarters**

The charts below indicate the occurrence of major crashes and fatalities across the provinces during the 1<sup>st</sup> Quarters of the 2019/ 2020 and 2021/ 2022 Financial Years.



**Figure 18: Major crash per province**



**Figure 19: Fatalities per province**

## 5.1 Vehicle types comparison for major crashes

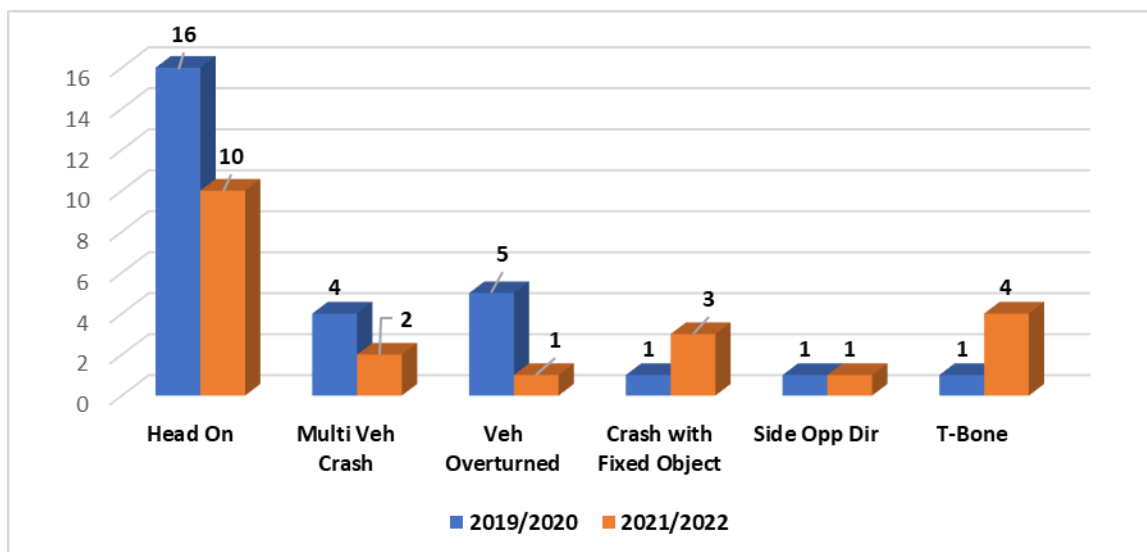
The table below depicts the vehicle types involved in the major crashes reported and investigated during the first quarters of 2019 and 2021. The vehicle type mostly involved in major crashes were light motor vehicles at and light delivery vehicles.

Vehicle Type	1 <sup>st</sup> Quarter 2019/ 2020	1 <sup>st</sup> Quarter 2021/ 2022
Light Motor Vehicle (LMV)	21	11
Light Delivery Vehicle (LDV)	18	12
SUV	3	1
Minibus Taxi	8	3
Truck	12	12
Bus	3	0
Tractor	0	1
<b>Total number of vehicles</b>	<b>65</b>	<b>40</b>

**Table 3:** Vehicle types involved in major crashes during the 1<sup>st</sup> Quarters of the 2019 and 2021

## 5.2 Major crash type comparison on major crashes

The figure below depicts the major crash type comparison on crashes that occurred during the first quarters of 2019 and 2021. Most of the major crashes that occurred during the first quarter for both years were head on.



**Figure 20:** Crash types that occurred for major crashes investigated

### 5.3 Contributing factors to the major crashes

The table below shows that the human factors have increased from 85% to 95% recording an increase of 10%. At least a reduction has been observed for vehicles and road factors.

	1 <sup>st</sup> Quarter 2019/ 2020	1 <sup>st</sup> Quarter 2021/ 2022
Human Factors	<b>85%</b>	<b>95%</b>
Vehicle Factors	<b>11%</b>	<b>5%</b>
Road and Environmental Factors	<b>4%</b>	<b>0%</b>

**Table 4:** Contributory factors for 1<sup>st</sup> quarter of 2019 and 2021

## SECTION B

### 1. INTRODUCTION

The section covers the vehicle population and human mobility data, as well as driver population. The vehicle population data will encompass the number of registered vehicles inclusive of the status of their roadworthiness and licencing, as well as human mobility in terms of the number of persons per vehicle. The driver population data covers the number of registered drivers including the status and categories of licenses

### 2. VEHICLE POPULATION

#### 2.1 Number of Registered Vehicles

The number of registered vehicles increased by 322 614 (2.56%) from 12 590 560 on 30 June 2019 to 12 913 174 vehicles on 30 June 2021. Detail per type of vehicle is given in table below.

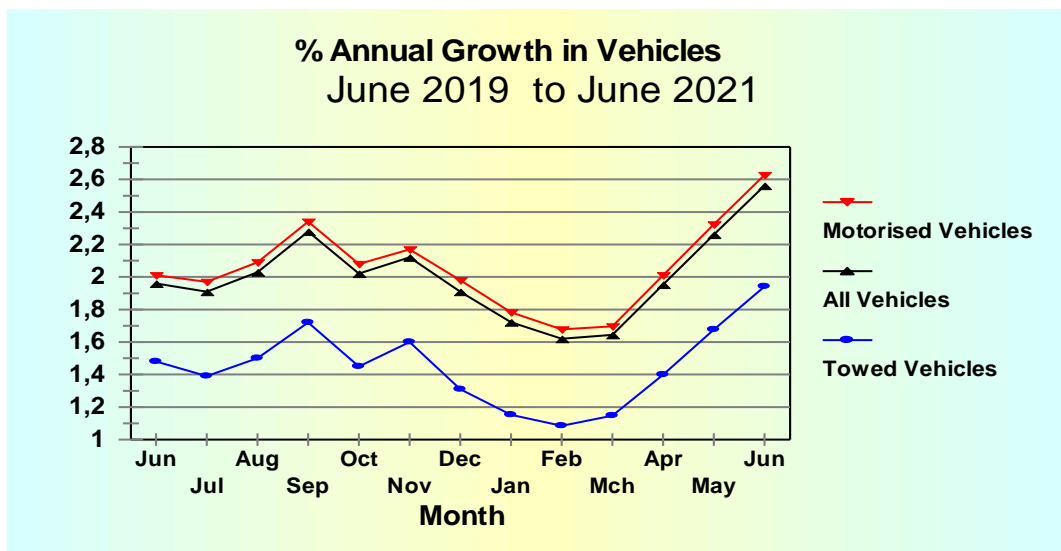
Number of Registered Vehicles	Number registered June 2019	Number registered June 2021	Change	% Change	% of Group June 2021	% of Total June 2021
<b>Motorised Vehicles</b>						
Motorcars	7 424 605	7 629 473	204 868	2,76	65,28	59,08
Minibuses	335 392	348 391	12 999	3,88	2,98	2,70
Buses	64 807	65 154	347	0,54	0,56	0,50
Motorcycles	345 507	344 946	-561	-0,16	2,95	2,67
LDV's - Bakkies	2 589 654	2 664 802	75 148	2,90	22,80	20,64
Trucks	378 254	384 865	6 611	1,75	3,29	2,98
Other & Unknown	250 609	250 485	-125	-0,05	2,14	1,94
<b>Total Motorised</b>	<b>11 388 828</b>	<b>11 688 116</b>	<b>299 288</b>	<b>2,63</b>	<b>100,00</b>	90,51
<b>Towed Vehicles</b>						
Caravans	100 292	98 096	-2 196	-2,19	8,01	0,76
Heavy Trailers	202 303	215 496	13 193	6,52	17,59	1,67
Light Trailers	883 781	896 842	13 061	1,48	73,21	6,95
Other & Unknown	15 356	14 625	-732	-4,76	1,19	0,11
<b>Total Towed</b>	<b>1 201 732</b>	<b>1 225 059</b>	<b>23 327</b>	<b>1,94</b>	<b>100,00</b>	<b>9,49</b>
<b>All Vehicles</b>	<b>12 590 560</b>	<b>12 913 174</b>	<b>322 614</b>	<b>2,56</b>		<b>100,00</b>

Table 5: Number of registered vehicles per type



The table above shows that on a percentage basis the biggest change within motorised vehicles category has been recorded for minibuses with an increase of 3.88%. The LDV's followed with an increase of 2.90%. However, within the towed vehicles category the heavy trailers recorded an increase of 6.52%.

The monthly percentage change over the past year for specific types of vehicles; as well as motorised and towed vehicles, are shown in the figures below.



**Figure 21: Percentage Annual Growth in vehicles**

The monthly percentage change over the past year for motorised vehicles are shown in the figure below.

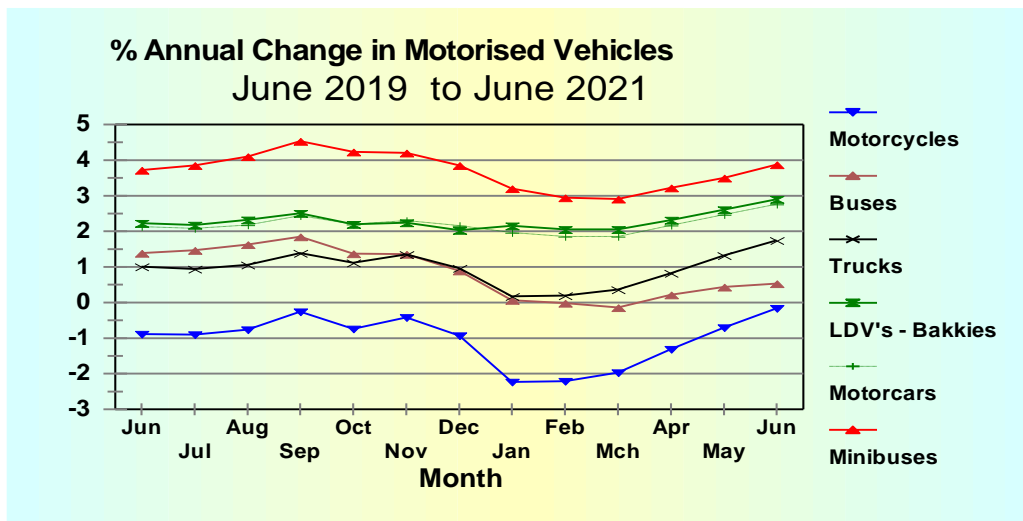


Figure 22: Percentage annual change in motorised vehicles

The total motor vehicle population per Province for June 2019 and June 2021 respectively, is given in table and reflected in the figure below.

Number of Registered Vehicles per Province	Number registered June 2019	Number registered June 2021	Change	% Change	% of Total June 2021
Gauteng	4 844 909	4 951 120	106 211	2,19	38,34
KwaZulu-Natal	1 677 537	1 730 954	53 417	3,18	13,40
Western Cape	2 041 960	2 075 012	33 052	1,62	16,07
Eastern Cape	836 840	865 053	28 213	3,37	6,70
Free State	635 921	648 280	12 359	1,94	5,02
Mpumalanga	911 710	930 975	19 265	2,11	7,21
North West	632 223	653 453	21 230	3,36	5,06
Limpopo	725 640	765 657	40 017	5,51	5,93
Northern Cape	283 820	292 670	8 850	3,12	2,27
<b>RSA</b>	<b>12 590 560</b>	<b>12 913 174</b>	<b>322 614</b>	<b>2,56</b>	<b>100</b>

Table 6: Number of registered vehicles per province

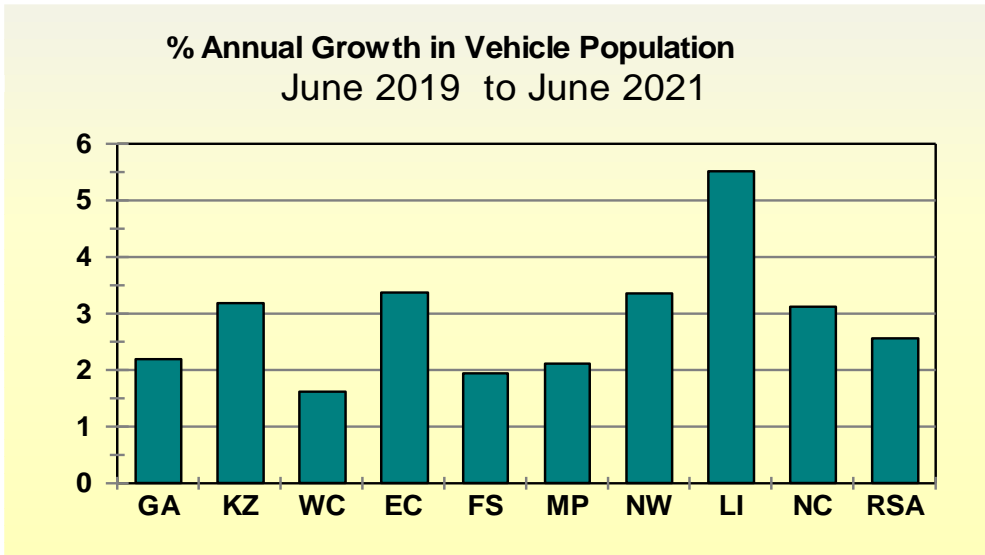


Figure 23: Percentage Annual Growth in Vehicle Population

The percentage vehicles registered per province as on 31 June 2021 is reflected in the figure below.

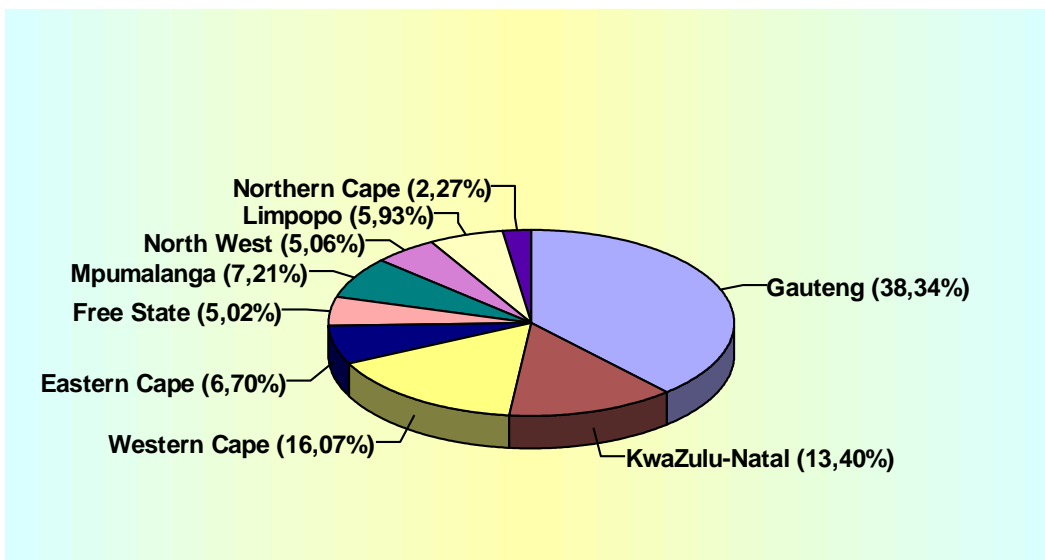


Figure 24: Percentage Vehicle Registered per province

The information in the figure above shows that about more than 38% of the vehicles population were registered in Gauteng. About 16.07% in Western Cape and 13.40% in Kwa-Zulu Natal.

More detailed information on the number of vehicles per type registered per Province for June 2019 and June 2021 is given in the table under **Appendix A**.

### 3. DRIVER POPULATION

#### 3.1 Learner Driving Licenses

The number of learner driving licenses issued decreased by 242 551 (20.58%) from 1 178 622 on 30 June 2019 to 936 071 on 30 June 2021. Detail on the number of learner driving licenses issued per category is given in table below and graphically reflected in the figure below.

Number of Learner Licenses Issued				
Category	June 2019	June 2021	Change	% Change
1	38 285	28 198	-10 087	-26,35
2	232 042	169 056	-62 986	-27,14
3	908 295	738 817	-169 478	-18,66
<b>Total</b>	<b>1 178 622</b>	<b>936 071</b>	<b>-242 551</b>	<b>-20,58</b>

Table 7: Number of learner licenses issued

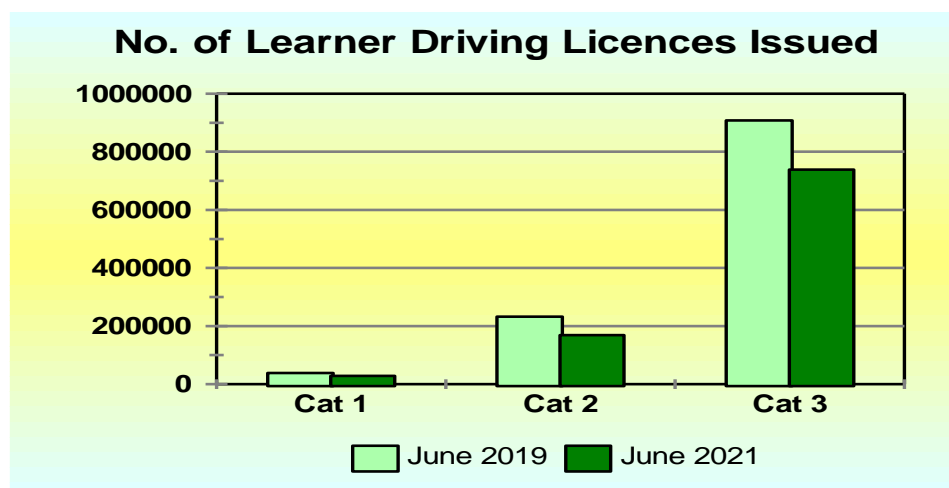


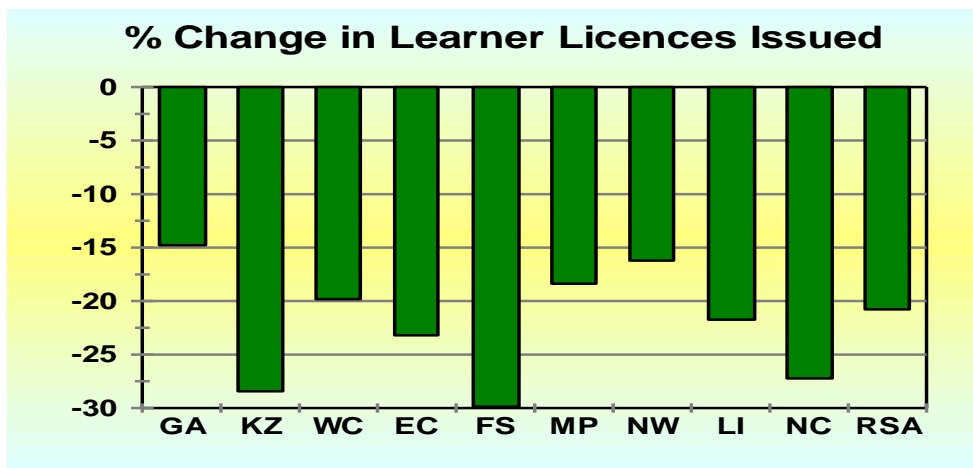
Figure 25: Number of learner license issued

Provincial information in this regard is given in the table below and the percentage change per Province over the 12-month period is reflected in the figure below.

Number of Learners Licenses Issued per Province										
Year	GA	KZ	WC	EC	FS	MP	NW	LI	NC	RSA
June 2019	342 098	193 068	176 886	100 236	66 766	107 488	60 469	103 667	27 944	1 178 622
June 2021	291 868	138 351	141 787	77 109	46 803	87 867	50 751	81 150	20 385	936 071
Change	-50 230	-54 717	-35 099	-23 127	-19 963	-19 621	-9 718	-22 517	-7 559	-242 551
% Change	-14,68	-28,34	-19,84	-23,07	-29,90	-18,25	-16,07	-21,72	-27,05	-20,58

**Table 8: Number of learner licenses issued per province**

All provinces have recorded a decrease with regards to the number of Learner Licenses issued when comparing 2021 and 2019. The highest decrease was recorded in Free State with 29.90% followed by KwaZulu Natal with 28.34%.



**Figure 26: Percentage change in learner licenses issued per province**

## 3.2 Driving Licenses Issued and Expired

### 3.2.1 Number of Driving Licenses Issued

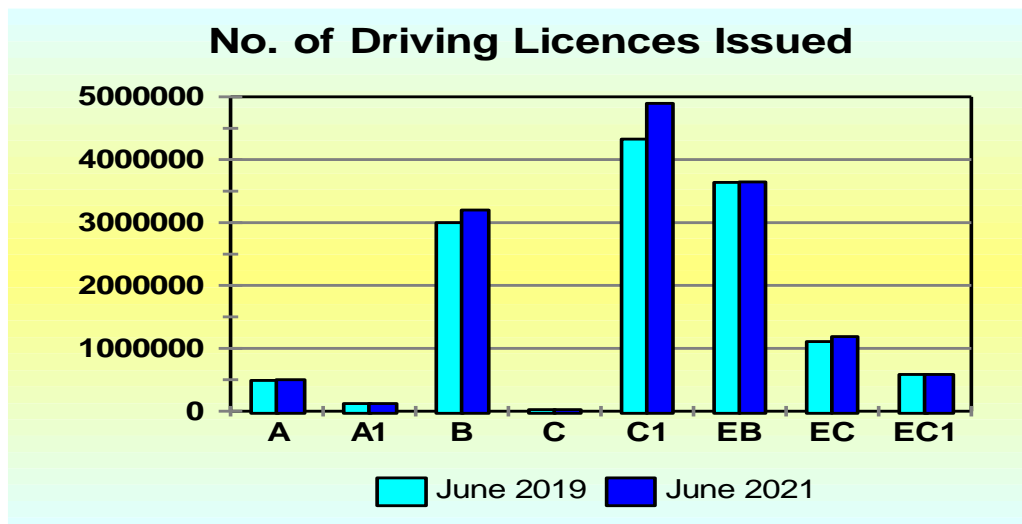
The number of driving licenses issued increased by 867 366 (6.52%) from 13 293 656 on 30 June 2019 to 14 161 022 on 30 June 2021. Details on the number of driving licenses issued per category is given in table and graphically reflected in the figure below.

Number of Driving Licenses Issued				
Category	June 2019	June 2021	Change	% Change
<b>A</b>	488 828	501 341	12 513	2,56
<b>A1</b>	122 631	122 546	-85	-0,07
<b>B</b>	2 998 425	3 200 056	201 631	6,72
<b>C</b>	23 902	24 707	805	3,37
<b>C1</b>	4 327 031	4 895 928	568 897	13,15
<b>EB</b>	3 638 998	3 645 674	6 676	0,18
<b>EC</b>	1 108 085	1 187 311	79 226	7,15
<b>EC1</b>	585 756	583 459	-2 297	-0,39
<b>Total</b>	<b>13 293 656</b>	<b>14 161 022</b>	<b>867 366</b>	<b>6,52</b>

Table 9: Number of driving licenses issued

#### Driving licenses:

<b>A</b>	Motorcycle > 125 cub.cm	<b>A1</b>	Motorcycle < 125 cub.cm	<b>B</b>	Motor vehicle < 3,5000 kg
<b>C</b>	Motor vehicle > 16,000 kg	<b>C1</b>	Motor vehicle 3,500 – 16,000 kg	<b>EB</b>	Articulated motor vehicle <16,000 kg
		<b>EC</b>	Articulated vehicle > 16,000 kg	<b>EC1</b>	Articulated vehicle 3,500 – 16,000 kg



**Figure 27: Number of driving licenses issued**

The information contained in the table above depicts the highest percentage change was recorded for Categories C1 with percentages of 13.15%. Followed by category EC and B with 7.15% and 6.72% respectively.

The number and percentage (%) of driving licenses issued per category at the end of June 2021 is reflected in the table below.

Number and % of Driving Licenses Issued per Category			
Category	Description	Number	%
A	Motorcycle > 125 cub.cm	501 341	3,54
A1	Motorcycle < 125 cub.cm	122 546	0,87
B	Motor vehicle < 3,5000 kg	3 200 056	22,60
C	Motor vehicle >16,000 kg	24 707	0,17
C1	Motor vehicle 3,500 - 16,000 kg	4 895 928	34,57
EB	Articulated motor vehicle < 16,000 kg	3 645 674	25,74
EC	Articulated vehicle > 16,000 kg	1 187 311	8,38
EC1	Articulated vehicle 3,500 - 16,000 kg	583 459	4,12
<b>Total</b>		<b>14 161 022</b>	<b>100</b>

**Table 10: Number and percentage of driving licenses issued per category**



Provincial information in this regard is given in the table below and the percentage change with regard to all licenses issued per province is reflected in the figure below.

Number of Driving Licenses Issued per Province										
Year	GA	KZ	WC	EC	FS	MP	NW	LI	NC	RSA
June 2019	4 622 626	2 133 254	2 014 490	972 963	660 117	985 638	630 027	1 027 792	246 749	13 293 656
June 2021	4 947 432	2 271 692	2 121 193	1 034 843	689 834	1 066 609	663 524	1 104 562	261 333	14 161 022
Change	324 806	138 438	106 703	61 880	29 717	80 971	33 497	76 770	14 584	867 366
% Change	7,03	6,49	5,30	6,36	4,50	8,22	5,32	7,47	5,91	6,52

Table 11: Number of driving licenses issued per province

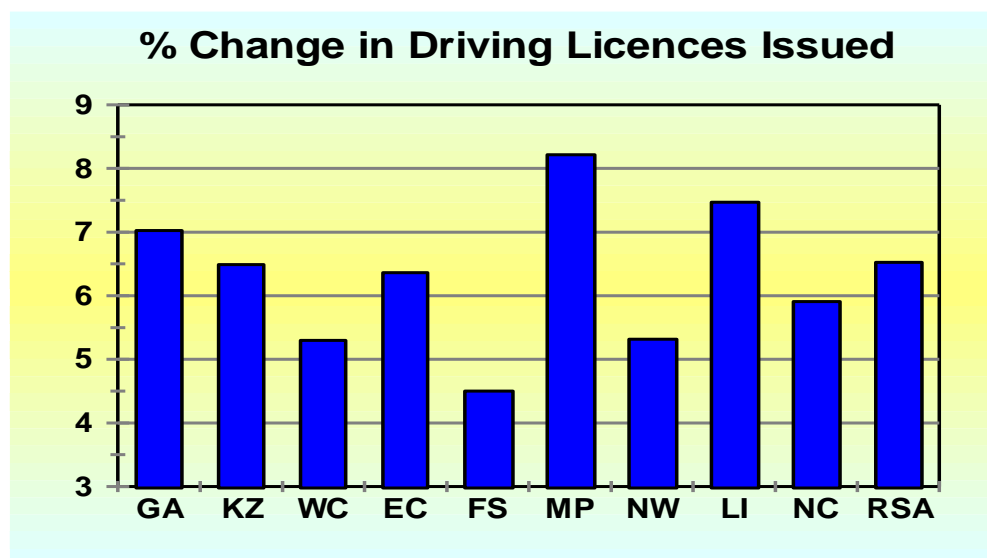


Figure 28: Percentage change in driving licenses issued

### 3.2.2 Professional Driving Permits Issued and Expired

#### 3.2.2.1 Number of Professional Driving Permits Issued

The number of Professional Driving Permits (PrDP's) issued increased by 81 178 (7.42%) from 1 094 100 on 30 June 2019 to 1 175 278 on 30 June 2021. Detail on the number of PrDPs issued per category is given in table below and graphically reflected in the figure below.

Number of PrDP's Issued				
Category	June 2019	June 2021	Change	% Change
G	8 168	7 921	-247	-3,02
P G	1 042 715	1 118 213	75 498	7,24
D G	155	140	-15	-9,68
D P G	43 062	49 004	5 942	13,80
<b>Total</b>	<b>1 094 100</b>	<b>1 175 278</b>	<b>81 178</b>	<b>7,42</b>

Table 12: Number of PrDP's issued

#### Professional Driving Permits (PrDPs)

G: Goods  
P: Passengers  
D: Dangerous goods

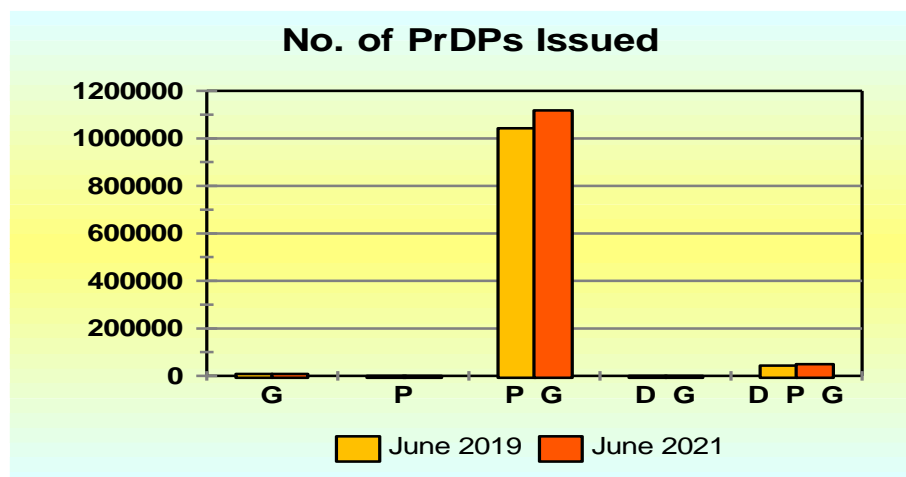
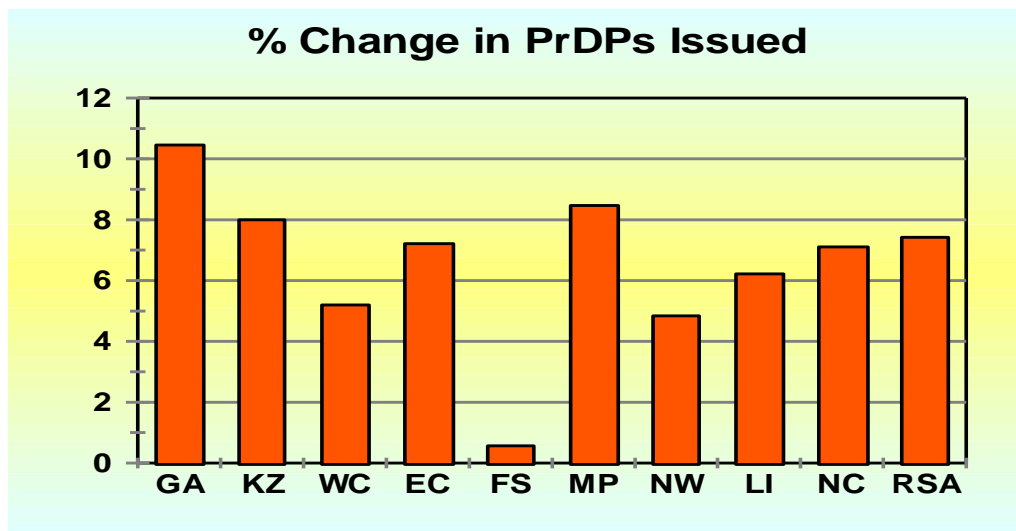


Figure 29: Number of PrDP's issued

Provincial information in this regard is given in the table below and the percentage change with regard to all categories of PrDP's issued per Province is reflected in the figure below.

Number of Professional Driving Permits (PrDP's) Issued per Province										
Year	GA	KZ	WC	EC	FS	MP	NW	LI	NC	RSA
June 2019	290 658	195 386	158 074	90 077	67 002	106 227	53 485	107 552	25 639	<b>1 094 100</b>
June 2021	321 042	211 006	166 288	96 574	67 379	115 218	56 074	114 235	27 462	<b>1 175 278</b>
Change	30 384	15 620	8 214	6 497	377	8 991	2 589	6 683	1 823	<b>81 178</b>
% Change	10,45	7,99	5,20	7,21	0,56	8,46	4,84	6,21	7,11	<b>7,42</b>

**Table 13: Number of professional driving permits (PrDP's) issued per province**



**Figure 30: Percentage in PrDP's issued per province**

**Compiled by**

.....

**Ms Magadi Gainewe**

**Manager: Data Analysis and Reporting**

**Date:**

**Reviewed and Supported by**

.....

**Mr Emmanuel Phasha**

**General Manager: Road Traffic Information**

**Date:**

**Recommended by**

.....

**Mr Kevin Kara-Vala**

**Executive Manager: Road Traffic Information & Technology**

**Date:**

**Approved by**

.....

**Advocate Makhosini Msibi**

**Chief Executive Officer**

**Date:**

## APPENDIX A

Jun 2019	Number of Registered Vehicles per Province									Total RSA
	GA	KZ	WC	EC	FS	MP	NW	LI	NC	
<b>Motorised Veh's</b>										
Motorcars	3 090 722	1 016 600	1 293 442	465 345	318 881	439 718	325 634	344 038	130 225	<b>7 424 605</b>
Minibuses	128 883	55 905	37 390	24 770	13 006	25 058	19 960	24 772	5 648	<b>335 392</b>
Buses	20 544	8 028	7 232	4 494	3 259	8 430	4 223	6 845	1 752	<b>64 807</b>
Motorcycles	140 481	30 953	85 634	21 657	18 445	18 425	12 941	8 981	7 990	<b>345 507</b>
LDV's - Bakkies	847 398	368 671	337 202	208 165	132 169	224 062	155 364	236 096	80 527	<b>2 589 654</b>
Trucks	138 499	49 148	45 777	22 305	21 802	47 932	17 324	26 391	9 076	<b>378 254</b>
Other & Unkwn	38 612	33 392	41 882	18 186	37 098	29 346	23 465	18 547	10 082	<b>250 609</b>
<b>Sub-Total</b>	<b>4 405 139</b>	<b>1 562 697</b>	<b>1 848 559</b>	<b>764 922</b>	<b>544 660</b>	<b>792 971</b>	<b>558 911</b>	<b>665 670</b>	<b>245 300</b>	<b>11 388 828</b>
<b>Towed Veh's</b>										
Caravans	37 910	7 100	18 241	5 140	7 402	10 056	6 214	5 486	2 743	<b>100 292</b>
Heavy Trailers	61 762	23 770	23 612	7 256	18 444	40 940	10 883	9 887	5 749	<b>202 303</b>
Light Trailers	337 733	82 490	149 344	57 988	63 500	65 897	54 062	43 405	29 362	<b>883 781</b>
Unknown	2 365	1 481	2 205	1 534	1 915	1 846	2 153	1 192	666	<b>15 356</b>
<b>Sub-Total</b>	<b>439 770</b>	<b>114 841</b>	<b>193 402</b>	<b>71 918</b>	<b>91 261</b>	<b>118 739</b>	<b>73 312</b>	<b>59 970</b>	<b>38 520</b>	<b>1 201 732</b>
<b>All Vehicles</b>	<b>4 844 909</b>	<b>1 677 537</b>	<b>2 041 960</b>	<b>836 840</b>	<b>635 921</b>	<b>911 710</b>	<b>632 223</b>	<b>725 640</b>	<b>283 820</b>	<b>12 590 560</b>

Jun 2021	Number of Registered Vehicles per Province									Total RSA
	GA	KZ	WC	EC	FS	MP	NW	LI	NC	
<b>Motorised Veh's</b>										
Motorcars	3 160 086	1 050 189	1 310 491	485 237	326 338	457 119	339 946	365 510	134 557	<b>7 629 473</b>
Minibuses	131 415	58 784	37 748	26 445	13 123	26 459	21 247	26 934	6 236	<b>348 391</b>
Buses	20 399	8 143	6 952	4 835	3 312	8 523	4 138	7 005	1 847	<b>65 154</b>
Motorcycles	142 903	30 836	85 999	21 409	17 716	17 367	12 548	8 679	7 489	<b>344 946</b>
LDV's - Bakkies	869 940	380 715	344 529	212 320	134 874	230 914	160 890	247 534	83 086	<b>2 664 802</b>
Trucks	142 156	51 744	46 526	22 857	23 095	43 959	17 634	27 637	9 257	<b>384 865</b>
Other & Unkwn	38 252	33 698	42 725	18 460	36 465	29 155	22 766	18 698	10 269	<b>250 485</b>
<b>Sub-Total</b>	<b>4 505 151</b>	<b>1 614 109</b>	<b>1 874 970</b>	<b>791 563</b>	<b>554 923</b>	<b>813 496</b>	<b>579 169</b>	<b>701 997</b>	<b>252 741</b>	<b>11 688 116</b>
<b>Towed Veh's</b>										
Caravans	36 599	6 712	18 633	5 102	7 088	9 698	6 129	5 462	2 673	<b>98 096</b>
Heavy Trailers	67 423	25 417	24 987	7 644	20 909	39 092	11 463	12 400	6 161	<b>215 496</b>
Light Trailers	339 761	83 317	154 273	59 251	63 532	66 938	54 685	44 660	30 425	<b>896 842</b>
Unknown	2 187	1 400	2 149	1 494	1 829	1 752	2 007	1 139	671	<b>14 625</b>
<b>Sub-Total</b>	<b>445 970</b>	<b>116 846</b>	<b>200 042</b>	<b>73 491</b>	<b>93 358</b>	<b>117 480</b>	<b>74 284</b>	<b>63 661</b>	<b>39 930</b>	<b>1 225 059</b>
<b>All Vehicles</b>	<b>4 951 120</b>	<b>1 730 954</b>	<b>2 075 012</b>	<b>865 053</b>	<b>648 280</b>	<b>930 975</b>	<b>653 453</b>	<b>765 657</b>	<b>292 670</b>	<b>12 913 174</b>

% Change Jun 2019-2021	Number of Registered Vehicles per Province									Total RSA
	GA	KZ	WC	EC	FS	MP	NW	LI	NC	
<b>Motorised Vehicles</b>										
Motorcars	2,24	3,30	1,32	4,27	2,34	3,96	4,40	6,24	3,33	<b>2,76</b>
Minibuses	1,96	5,15	0,96	6,76	0,90	5,59	6,45	8,73	10,41	<b>3,88</b>
Buses	-0,71	1,43	-3,87	7,59	1,63	1,10	-2,01	2,34	5,42	<b>0,54</b>
Motorcycles	1,72	-0,38	0,43	-1,15	-3,95	-5,74	-3,04	-3,36	-6,27	<b>-0,16</b>
LDV's - Bakkies	2,66	3,27	2,17	2,00	2,05	3,06	3,56	4,84	3,18	<b>2,90</b>
Trucks	2,64	5,28	1,64	2,47	5,93	-8,29	1,79	4,72	1,99	<b>1,75</b>
Other & Unknown	-0,93	0,92	2,01	1,50	-1,71	-0,65	-2,98	0,81	1,85	<b>-0,05</b>
<b>Sub-Total</b>	<b>2,27</b>	<b>3,29</b>	<b>1,43</b>	<b>3,48</b>	<b>1,88</b>	<b>2,59</b>	<b>3,62</b>	<b>5,46</b>	<b>3,03</b>	<b>2,63</b>
<b>Towed Vehicles</b>										
Caravans	-3,46	-5,46	2,15	-0,74	-4,24	-3,56	-1,37	-0,44	-2,55	<b>-2,19</b>
Heavy Trailers	9,17	6,93	5,82	5,35	13,36	-4,51	5,33	25,42	7,17	<b>6,52</b>
Light Trailers	0,60	1,00	3,30	2,18	0,05	1,58	1,15	2,89	3,62	<b>1,48</b>
Unknown	-7,55	-5,47	-2,52	-2,64	-4,52	-5,12	-6,78	-4,49	0,68	<b>-4,76</b>
<b>Sub-Total</b>	<b>1,41</b>	<b>1,75</b>	<b>3,43</b>	<b>2,19</b>	<b>2,30</b>	<b>-1,06</b>	<b>1,33</b>	<b>6,15</b>	<b>3,66</b>	<b>1,94</b>
<b>All Vehicles</b>	<b>2,19</b>	<b>3,18</b>	<b>1,62</b>	<b>3,37</b>	<b>1,94</b>	<b>2,11</b>	<b>3,36</b>	<b>5,51</b>	<b>3,12</b>	<b>2,56</b>

## APPENDIX B-1

June 2019	Number of Learners Licenses Issued per Province									
Category	GA	KZ	WC	EC	FS	MP	NW	LI	NC	RSA
1	12 875	3 311	11 952	2 338	2 046	2 119	1 460	1 259	925	38 285
2	62 872	30 540	77 035	24 113	13 261	7 636	7 743	4 358	4 484	232 042
3	266 351	159 217	87 899	73 785	51 459	97 733	51 266	98 050	22 535	908 295
<b>Total</b>	<b>342 098</b>	<b>193 068</b>	<b>176 886</b>	<b>100 236</b>	<b>66 766</b>	<b>107 488</b>	<b>60 469</b>	<b>103 667</b>	<b>27 944</b>	<b>1 178 622</b>
June 2021	Number of Learners Licenses Issued per Province									
Category	GA	KZ	WC	EC	FS	MP	NW	LI	NC	RSA
1	10 828	2 230	8 268	1 491	1 367	1 533	1 061	922	498	28 198
2	45 062	18 507	62 575	16 396	9 489	5 318	5 704	2 874	3 131	169 056
3	235 978	117 614	70 944	59 222	35 947	81 016	43 986	77 354	16 756	738 817
<b>Total</b>	<b>291 868</b>	<b>138 351</b>	<b>141 787</b>	<b>77 109</b>	<b>46 803</b>	<b>87 867</b>	<b>50 751</b>	<b>81 150</b>	<b>20 385</b>	<b>936 071</b>
% Change	Number of Learners Licenses Issued per Province									
Category	GA	KZ	WC	EC	FS	MP	NW	LI	NC	RSA
1	-15,90	-32,65	-30,82	-36,23	-33,19	-27,65	-27,33	-26,77	-46,16	-26,35
2	-28,33	-39,40	-18,77	-32,00	-28,44	-30,36	-26,33	-34,05	-30,17	-27,14
3	-11,40	-26,13	-19,29	-19,74	-30,14	-17,10	-14,20	-21,11	-25,64	-18,66
<b>Total</b>	<b>-14,68</b>	<b>-28,34</b>	<b>-19,84</b>	<b>-23,07</b>	<b>-29,90</b>	<b>-18,25</b>	<b>-16,07</b>	<b>-21,72</b>	<b>-27,05</b>	<b>-20,58</b>

### Learner Licenses :

Category 1 : Motorcycle

Category 2 : Light Motor Vehicle

Category 3 : Heavy Motor Vehicle

## APPENDIX B-2

June 2019	Number of Driving Licenses Issued per Province									
Category	GA	KZ	WC	EC	FS	MP	NW	LI	NC	RSA
<b>A</b>	178 321	61 765	118 840	35 240	26 483	23 289	19 921	15 403	9 566	<b>488 828</b>
<b>A1</b>	43 584	13 001	29 025	9 177	8 837	6 536	6 272	3 804	2 395	<b>122 631</b>
<b>B</b>	1 106 184	482 323	631 833	248 399	151 008	125 918	119 895	78 513	54 352	<b>2 998 425</b>
<b>C</b>	4 872	4 925	5 280	1 203	539	3 035	1 728	1 843	477	<b>23 902</b>
<b>C1</b>	1 464 561	736 430	236 103	242 754	178 816	494 696	246 933	649 484	77 254	<b>4 327 031</b>
<b>EB</b>	1 285 529	575 718	815 495	313 578	175 340	158 729	140 489	109 078	65 042	<b>3 638 998</b>
<b>EC</b>	321 311	189 462	127 692	76 195	84 063	121 316	58 041	103 732	26 273	<b>1 108 085</b>
<b>EC1</b>	218 264	69 630	50 222	46 417	35 031	52 119	36 748	65 935	11 390	<b>585 756</b>
<b>Total</b>	<b>4 622 626</b>	<b>2 133 254</b>	<b>2 014 490</b>	<b>972 963</b>	<b>660 117</b>	<b>985 638</b>	<b>630 027</b>	<b>1 027 792</b>	<b>246 749</b>	<b>13 293 656</b>
June 2021	Number of Driving Licenses Issued per Province									
Category	GA	KZ	WC	EC	FS	MP	NW	LI	NC	RSA
<b>A</b>	182 632	62 828	124 219	35 881	26 615	23 589	20 054	15 821	9 702	<b>501 341</b>
<b>A1</b>	43 232	13 018	29 618	9 201	8 721	6 433	6 162	3 796	2 365	<b>122 546</b>
<b>B</b>	1 190 676	507 117	682 777	264 945	159 776	130 604	125 068	81 549	57 544	<b>3 200 056</b>
<b>C</b>	5 002	4 974	5 617	1 245	542	3 286	1 677	1 863	501	<b>24 707</b>
<b>C1</b>	1 678 191	833 860	267 540	281 461	197 452	559 622	275 232	715 031	87 539	<b>4 895 928</b>
<b>EB</b>	1 283 665	575 587	826 682	314 786	174 279	157 385	139 114	109 253	64 923	<b>3 645 674</b>
<b>EC</b>	347 070	204 780	134 730	80 693	87 660	133 702	60 286	111 027	27 363	<b>1 187 311</b>
<b>EC1</b>	216 964	69 528	50 010	46 631	34 789	51 988	35 931	66 222	11 396	<b>583 459</b>
<b>Total</b>	<b>4 947 432</b>	<b>2 271 692</b>	<b>2 121 193</b>	<b>1 034 843</b>	<b>689 834</b>	<b>1 066 609</b>	<b>663 524</b>	<b>1 104 562</b>	<b>261 333</b>	<b>14 161 022</b>
% Change	Number of Driving Licenses Issued per Province									
Category	GA	KZ	WC	EC	FS	MP	NW	LI	NC	RSA
<b>A</b>	2,42	1,72	4,53	1,82	0,50	1,29	0,67	2,71	1,42	<b>2,56</b>
<b>A1</b>	-0,81	0,13	2,04	0,26	-1,31	-1,58	-1,75	-0,21	-1,25	<b>-0,07</b>
<b>B</b>	7,64	5,14	8,06	6,66	5,81	3,72	4,31	3,87	5,87	<b>6,72</b>
<b>C</b>	2,67	0,99	6,38	3,49	0,56	8,27	-2,95	1,09	5,03	<b>3,37</b>
<b>C1</b>	14,59	13,23	13,31	15,94	10,42	13,12	11,46	10,09	13,31	<b>13,15</b>
<b>EB</b>	-0,14	-0,02	1,37	0,39	-0,61	-0,85	-0,98	0,16	-0,18	<b>0,18</b>
<b>EC</b>	8,02	8,08	5,51	5,90	4,28	10,21	3,87	7,03	4,15	<b>7,15</b>
<b>EC1</b>	-0,60	-0,15	-0,42	0,46	-0,69	-0,25	-2,22	0,44	0,05	<b>-0,39</b>
<b>Total</b>	<b>7,03</b>	<b>6,49</b>	<b>5,30</b>	<b>6,36</b>	<b>4,50</b>	<b>8,22</b>	<b>5,32</b>	<b>7,47</b>	<b>5,91</b>	<b>6,52</b>

### Driving Licenses:

<b>A</b>	Motorcycle > 125 cub.cm	<b>A1</b>	Motorcycle < 125 cub.cm	<b>B</b>	Motor vehicle < 3,5000 kg
<b>C</b>	Motorvehicle > 16,000 kg	<b>C1</b>	Motor vehicle 3,500 – 16,000 kg	<b>EB</b>	Articulated motor vehicle <16,000 kg
		<b>EC</b>	Articulated vehicle > 16,000 kg	<b>EC1</b>	Articulated vehicle 3,500 – 16,000 kg



### APPENDIX B-3

June 2019	Number of Professional Driving Permits (PrDP's) Issued per Province									
Category	GA	KZ	WC	EC	FS	MP	NW	LI	NC	RSA
<b>G</b>	1 443	1 562	1 447	696	801	805	379	683	352	<b>8 168</b>
<b>P G</b>	274 877	182 733	152 175	86 908	63 043	101 798	51 839	104 843	24 499	<b>1 042 715</b>
<b>D G</b>	28	8	20	15	20	6	14	43	1	<b>155</b>
<b>D P G</b>	14 310	11 083	4 432	2 458	3 138	3 618	1 253	1 983	787	<b>43 062</b>
<b>Total</b>	<b>290 658</b>	<b>195 386</b>	<b>158 074</b>	<b>90 077</b>	<b>67 002</b>	<b>106 227</b>	<b>53 485</b>	<b>107 552</b>	<b>25 639</b>	<b>1 094 100</b>
June 2021										
Category	GA	KZ	WC	EC	FS	MP	NW	LI	NC	RSA
<b>G</b>	1 435	1 501	1 509	627	689	766	378	684	332	<b>7 921</b>
<b>P G</b>	302 648	196 847	160 102	93 276	63 428	109 999	54 315	111 282	26 316	<b>1 118 213</b>
<b>D G</b>	35	16	11	9	18	13	10	20	8	<b>140</b>
<b>D P G</b>	16 924	12 642	4 666	2 662	3 244	4 440	1 371	2 249	806	<b>49 004</b>
<b>Total</b>	<b>321 042</b>	<b>211 006</b>	<b>166 288</b>	<b>96 574</b>	<b>67 379</b>	<b>115 218</b>	<b>56 074</b>	<b>114 235</b>	<b>27 462</b>	<b>1 175 278</b>
% Change										
Category	GA	KZ	WC	EC	FS	MP	NW	LI	NC	RSA
<b>G</b>	-0,55	-3,91	4,28	-9,91	-13,98	-4,84	-0,26	0,15	-5,68	-3,02
<b>P G</b>	10,10	7,72	5,21	7,33	0,61	8,06	4,78	6,14	7,42	7,24
<b>D G</b>	25,00	100,00	-45,00	-40,00	-10,00	116,67	-28,57	-53,49	700,00	-9,68
<b>D P G</b>	18,27	14,07	5,28	8,30	3,38	22,72	9,42	13,41	2,41	13,80
<b>Total</b>	<b>10,45</b>	<b>7,99</b>	<b>5,20</b>	<b>7,21</b>	<b>0,56</b>	<b>8,46</b>	<b>4,84</b>	<b>6,21</b>	<b>7,11</b>	<b>7,42</b>

#### Professional Driving Permits (PrDPs)

G : Goods

P : Passengers

D : Dangerous goods



Road Traffic Management Corporation  
Eco Origin Office Park, Block F  
349 Witch-Hazel Street  
Highveld Ext 79  
Tell: 012 999 5200

.....  
Want to know more about the RTMC - visit [www.rtmc.co.za](http://www.rtmc.co.za)