



Road Traffic
Management Corporation

State of Road Safety Report
Quarterly Report: April - June 2022



transport

Department:
Transport
REPUBLIC OF SOUTH AFRICA



Table of contents

Table of contents	ii
List of Figures	4
List of acronyms and abbreviations	6
1. OBJECTIVE OF THE REPORT	7
2. EXECUTIVE SUMMARY	8
SECTION A	10
1. INTRODUCTION	10
2. METHODOLOGY	10
3. ROAD FATAL CRASHES	12
4. ROAD FATALITIES	21
5. MAJOR CRASHES INVESTIGATED	28
SECTION B	32
1. INTRODUCTION	32
2. VEHICLE POPULATION	32
3. DRIVER POPULATION	36
APPENDIX A	45
APPENDIX B-1	46
APPENDIX B-2	47
APPENDIX B-3	48

List of Tables

Table 1: Number of fatal crashes per Province	12
Table 2: Comparison of fatalities per province for the two quarters	21
Table 3: Vehicle types involved in major crashes.....	30
Table 4: Contributory factors	31
Table 5: Number of registered vehicles per type.....	32
Table 6: Number of registered vehicles per province	34
Table 7: Number of learner licences issued.....	36
Table 8: Number of learner licences issued per province.....	37
Table 9: Number of driving licences issued	38
Table 10: Number and percentage of driving licences issued per category	39
Table 11: Number of driving licences issued per province	40
Table 12: Number of PrDP's issued	41
Table 13: Number of professional driving permits (PrDP's) issued per province	42

List of Figures

Figure 1: Percentage distribution of fatal crashes per province	13
Figure 2: Percentage distribution of fatal crashes per day of week.....	14
Figure 3: Percentage distribution of fatal crashes per time of day.....	14
Figure 4: Percentage distribution of crash types	15
Figure 5: Percentage distribution of fatal crashes per vehicle type.....	16
Figure 6: Comparison of contributory factors	17
Figure 7: Percentage distribution of human factors	18
Figure 8: Percentage distribution of road and environmental factors.....	19
Figure 9: Percentage distribution for vehicle factor	20
Figure 10: Percentage distribution of fatalities per road user	22
Figure 11: Percentage distribution of fatalities per gender.....	23
Figure 12: Percentage distribution of fatalities per race	23
Figure 13: Percentage distribution of fatalities per age for drivers	24
Figure 14: Percentage distribution of fatalities per age for passengers	25
Figure 15: Percentage distribution of fatalities per age for pedestrians.....	26
Figure 16: Percentage distribution of fatalities per age for cyclists.....	26
Figure 17: Major crash casualties during 1st quarters	28
Figure 18: Major crash per province.....	29
Figure 19: Fatalities per province.....	29
Figure 20: Crash types that occurred for major crashes investigated	31
Figure 21: Percentage Annual Growth in vehicles	33
Figure 22: Percentage annual change in motorised vehicles	34
Figure 23: Percentage Annual Growth in Vehicle Population	35
Figure 24: Percentage Vehicle Registered per province.....	35

Figure 25: Number of learner license issued	36
Figure 26: Percentage change in learner licences issued per province	37
Figure 27: Number of driving licences issued	39
Figure 28: Percentage change in driving licences issued	40
Figure 29: Number of PrDP's issued	41
Figure 30: Percentage in PrDP's issued per province	42

List of acronyms and abbreviations

CHOCOR	:	CULPABLE HOMICIDE CRIME: OBSERVATION REPORT
EC	:	EASTERN CAPE
GA	:	GAUTENG
FS	:	FREE STATE
LI	:	LIMPOPO
MP	:	MPUMALANGA
NC	:	NORTHERN CAPE
NW	:	NORTH WEST
WC	:	WESTERN CAPE
KZN	:	KWAZULU NATAL
SAPS	:	SOUTH AFRICAN POLICE SERVICE
NATIS	:	NATIONAL TRAFFIC INFORMATION SYSTEM

1. OBJECTIVE OF THE REPORT

This report is aimed at achieving the following objectives:

- To provide road traffic fatal crashes and fatalities statistics based on the Culpable Homicide Crash: Observation Report (CHoCOR) Forms and provincial inputs; and
- To present statistics on registered vehicles, un-roadworthy vehicles, un-licenced vehicles, driving licence and professional driving permits issued.

2. EXECUTIVE SUMMARY

The report provides fatal road crash statistics in South African public roads. The performance is for the period April to June 2022. The performance per each focus areas have been provided below.

Road Crashes Data

A total of 3,156 fatalities were recorded between April and June 2022 compared to 3,224 for the same period in 2021. For the same period 2,659 fatal crashes were recorded compared to 2,774 period in 2021. This is a reduction of 2.7% for fatalities and 4.1% fatal crashes.

A total of twenty-six (26) major crashes were reported and investigated during this period. One-hundred and seventy-nine (179) people were killed, and two-hundred and seventy-six (276) people sustained injuries in these major crashes.

Vehicle and driver population

Registered vehicles increased by 240,989 (1.87%) from 12,913,174 in June 2021 to 13,154,163 vehicles in June 2022.

The number of learners driving licences issued increased by 160,509 (17.15%) from 936,071 in June 2021 to 1,096,580 in June 2022.

The number of driving licences issued increased by 49,1936 (3.47%) from 14,161,022 in June 2021 to 14,652 958 in June 2022.

The number of Professional Driving Permits (PrDP's) issued decreased by 137,251 (11.68%) from 1,175 278 in June 2021 to 1,038,027 in June 2022.

SECTION A

1. INTRODUCTION

This report compares fatal crashes reported to police stations between April and June 2021 and April and June 2022 using the CHoCOR Forms and information recorded by provinces. The report includes information on registered vehicles, driving licences and professional driving permits issued from the National Traffic Information System (NaTIS); and information on population growth using the 2021 mid-year population estimates from Statistics South Africa (Stats SA).

2. METHODOLOGY

2.1 Road crash data collection methodology

The Culpable Homicide Crash Observation Report (CHoCOR) forms are used to collect fatal crashes data on daily basis. South African Police Service (SAPS) and Provincial Departments of Road and Transport are the sources of fatal crash data. SAPS provides the Road Traffic Management Corporation (RTMC) with a list of all recorded fatal crashes (called the CAS list) and further to this the RTMC receives CHoCOR forms from various police stations; the provincial departments also submit data on fatal crashes to RTMC. RTMC validates all inputs for consistency, captures, processes, and verifies the data and compiles the report.

2.2 Crash Data Flow

Data is collected through the CHoCOR forms and provincial inputs. The data is then submitted to RTMC.

2.3 Data processing

The data is received from the three areas (SAPS, CHoCOR and provinces), validated, captured, processed, and verified for the compilation of the consolidated statistical report. There is a continuous engagement with SAPS and provinces for validation purpose.

2.4 Limitations

The road traffic information contained in the report is based on the fatal crashes only. There is still a need for collection of all road crashes, traffic volumes, road conditions, weather reports amongst others to complement the data currently collected.

2.5 Instruments

The Culpable Homicide Crash Observation Report (CHoCOR) forms and provincial inputs are used by RTMC record fatality data on daily basis.

3. ROAD FATAL CRASHES

The section covers fatal road crash data. The section encompasses the number of fatal crashes and fatalities, contributory factors, fatality data per road user group and major crashes.

3.1 Number of fatal crashes

The table below provides a comparison between the first quarter of the financial year 2021/22 and first quarter of the financial year 2022/23. Nationally there has been a decrease of 115 (4.1%) fatal crashes. At a provincial level 7 (seven) provinces recorded a decrease and 2 (two) provinces namely KwaZulu-Natal and Western Cape recorded increases in fatal crashes. In terms of decrease in number of fatal crashes the highest decreases were in Eastern Cape at (-74) followed by Mpumalanga at (-34). The highest percentage (%) decreases were in Eastern Cape at 20.5%, Northern Cape at 16.5% and Free State at 14.6%.

Number of Fatal Crashes per Province										
Quarter 1	EC	FS	GP	KZN	LI	MP	NC	NW	WC	RSA
Apr - Jun 2021	361	158	588	546	297	279	91	175	279	2 774
Apr - Jun 2022	287	135	584	562	283	245	76	156	331	2 659
Change	-74	-23	-4	16	-14	-34	-15	-19	52	-115
% Change	-20.5	-14.6	-0.7	2.9	-4.7	-12.2	-16.5	-10.9	18.6	-4.1

Table 1: Number of fatal crashes per Province

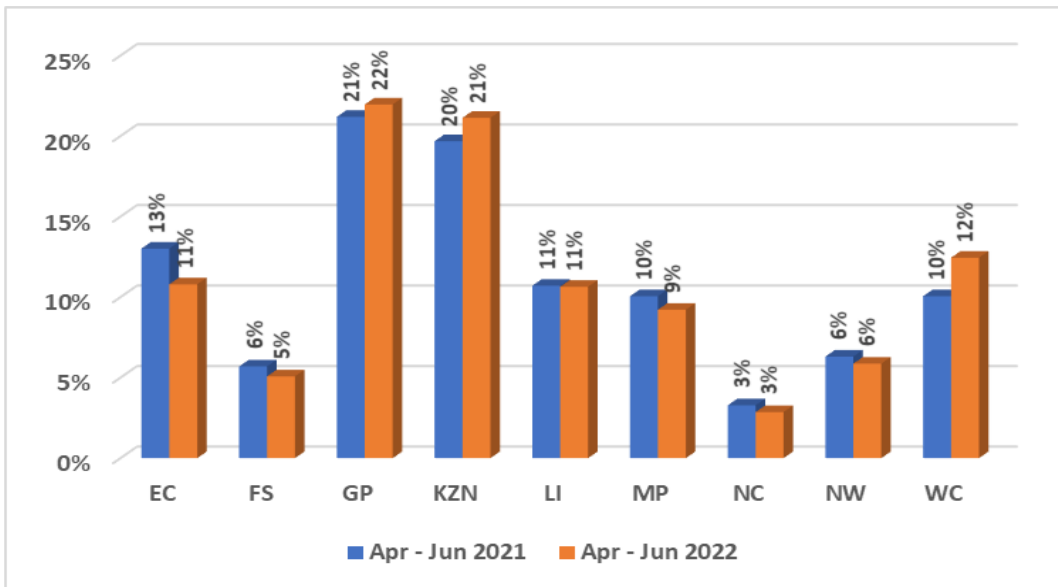


Figure 1: Percentage distribution of fatal crashes per province

The above figure shows percentage distribution of fatal crashes per province. figures are provided in the figure above. The provinces with the highest contribution are Gauteng and KwaZulu-Natal at 22% and 21% respectively for 2022. More than 40% of fatal crashes for the period under review are from Gauteng and KwaZulu-Natal.

3.1.1 Fatal Crashes per Day of Week

The details of the crashes per day of the week are given in the figure below. The weekend days (Friday, Saturday, and Sunday) remain the most contributors of fatal crashes at an average of 60% fatal crashes from these three days. Saturdays and Sundays contribute an average of 44% to fatal crashes.

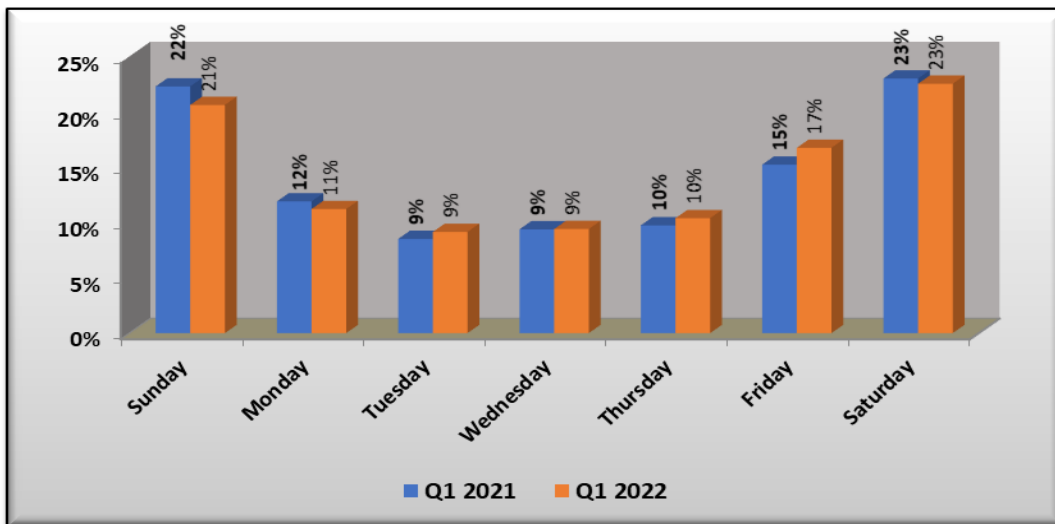


Figure 2: Percentage distribution of fatal crashes per day of week

3.1.2 Fatal Crashes per time of day

The percentage of fatal crashes per time of day for the period under review is reflected in the figure below.

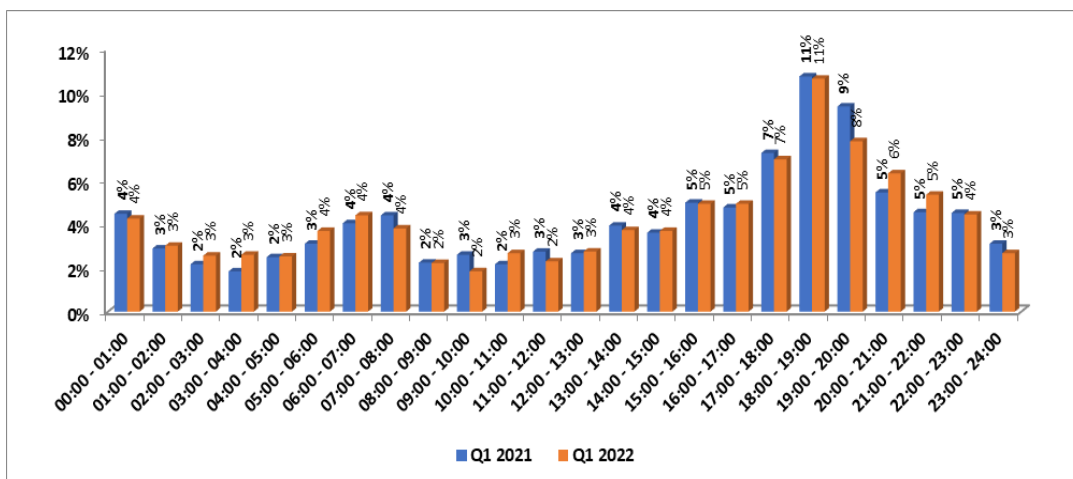


Figure 3: Percentage distribution of fatal crashes per time of day

From the figure above the period 17:00 to 20:00 is the peak of fatal crashes. This period contributes a quarter of all fatal crashes in the time of day.

3.1.3 Fatal crashes per crash type

The percentage contribution of fatal crashes per crash type are reflected in the figure below.

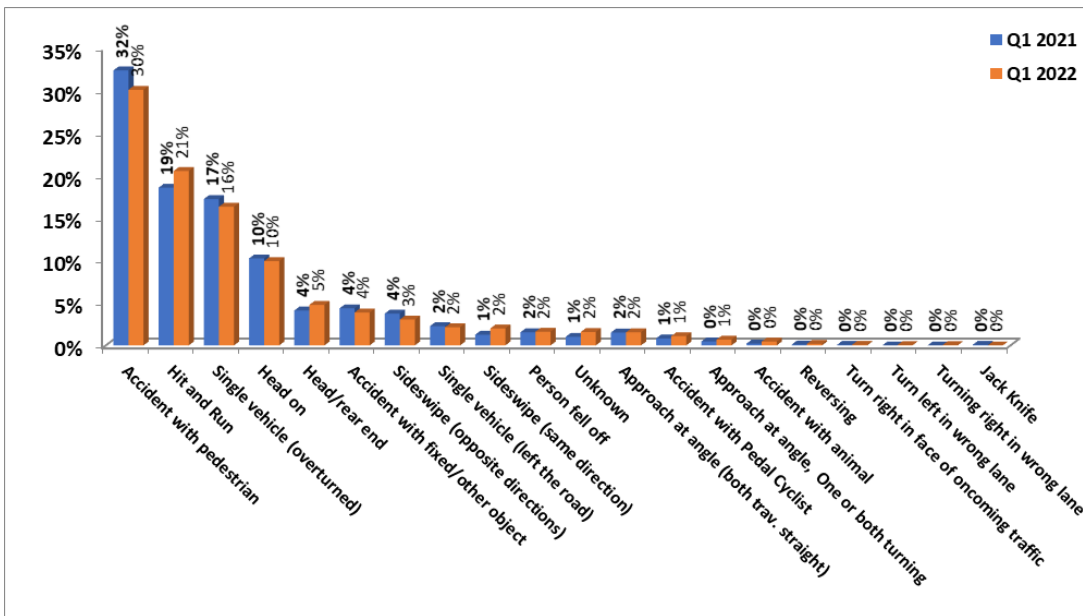


Figure 4: Percentage distribution of crash types

Based on the figure above, most fatal crashes occurred with pedestrians at an average of 31%, followed by hit and runs at an average of 20% and single vehicle overturned at 16%.

3.1.4 Fatal crashes per vehicle type

The percentage contribution of various vehicles involved in the fatal crashes are reflected in the figure below.

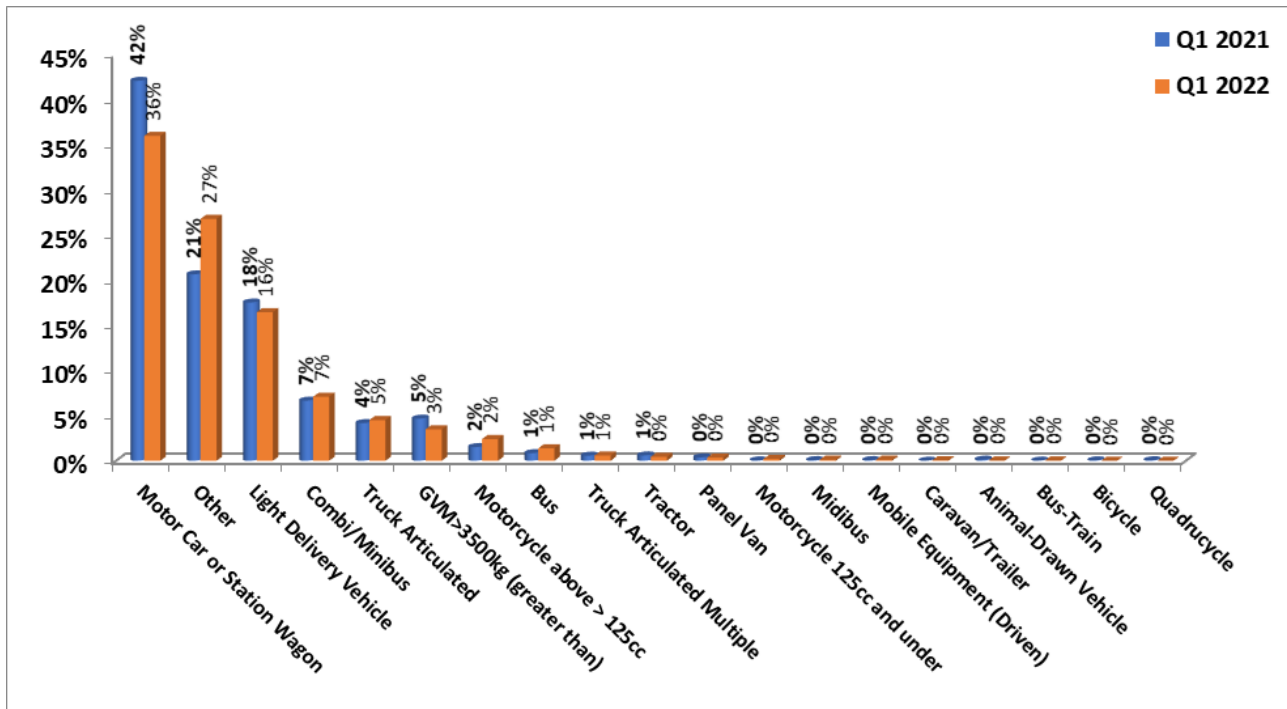


Figure 5: Percentage distribution of fatal crashes per vehicle type

The vehicle types that contributed the highest to fatal crashes were motorcars and LDV's with contributions of 36% in 2022.

3.2 Contributory factors

The contributory factors for fatal crashes are classified as follows: human factors (defined as a stable, general human abilities and limitations that are valid for all users); vehicle factors (are focussed on the vehicle itself covering issues around mechanical failures); and environment factors (include limited visibility, poorly marked roads, missing road signs, sudden changes in road infrastructure, gravel road, the state of the road and weather conditions).

Human factors contribute a high percent to fatal crashes. These factors average 85% contribution for the period under review. Human factors remain a big concern.

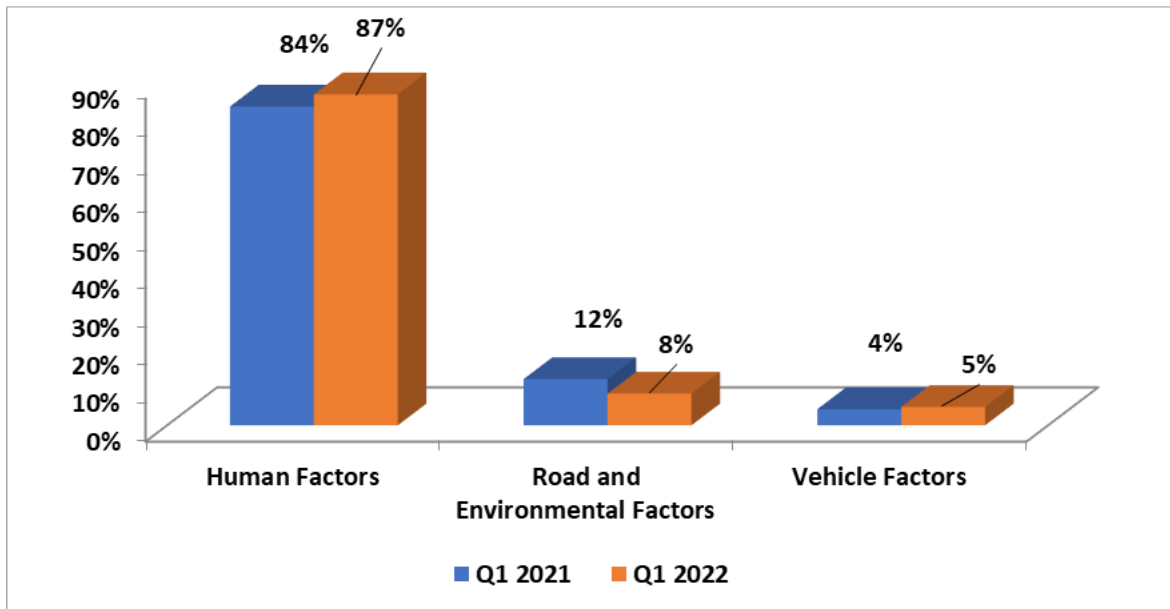


Figure 6: Comparison of contributory factors

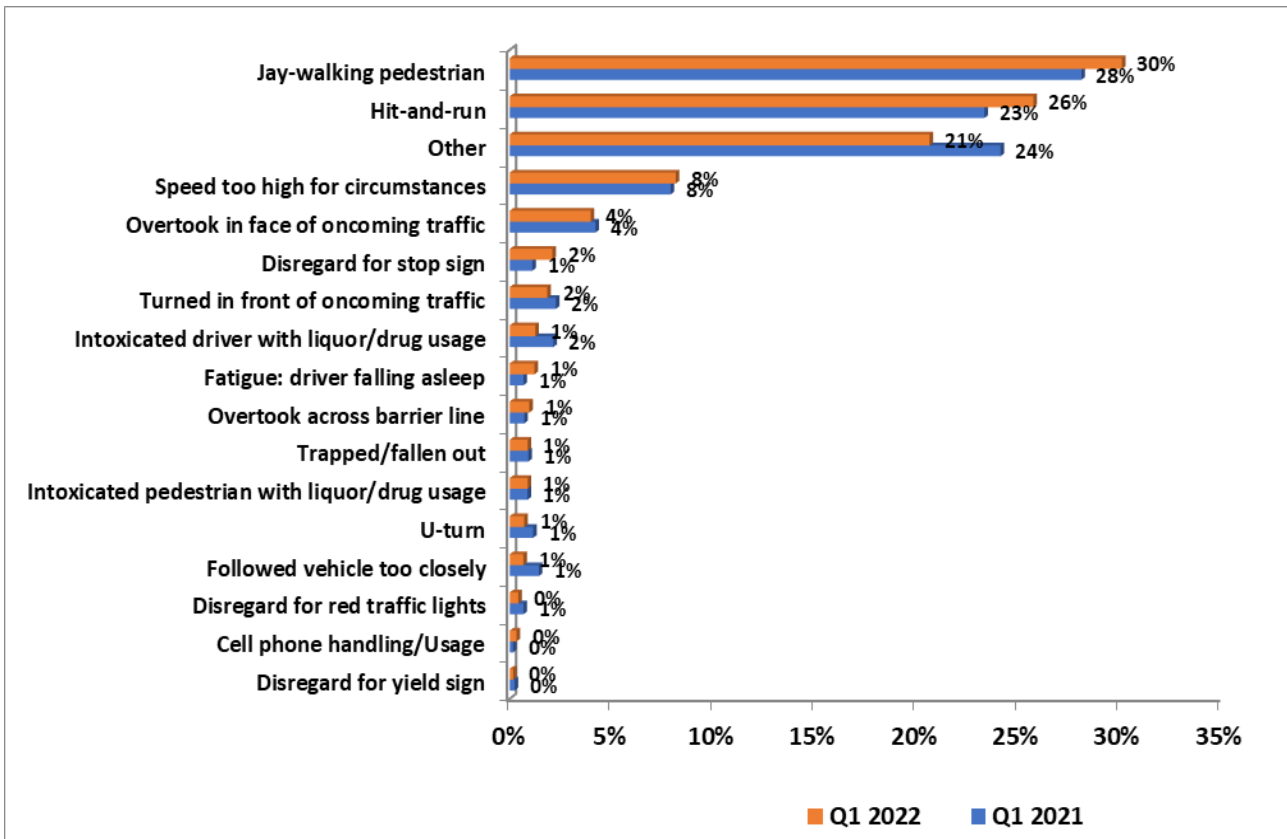


Figure 7: Percentage distribution of human factors

The figure above shows that jaywalking is the major contributory factor within the human factors closely followed by hit and runs. These two factors contribute more than 50% of the fatal crashes within the human factor category.

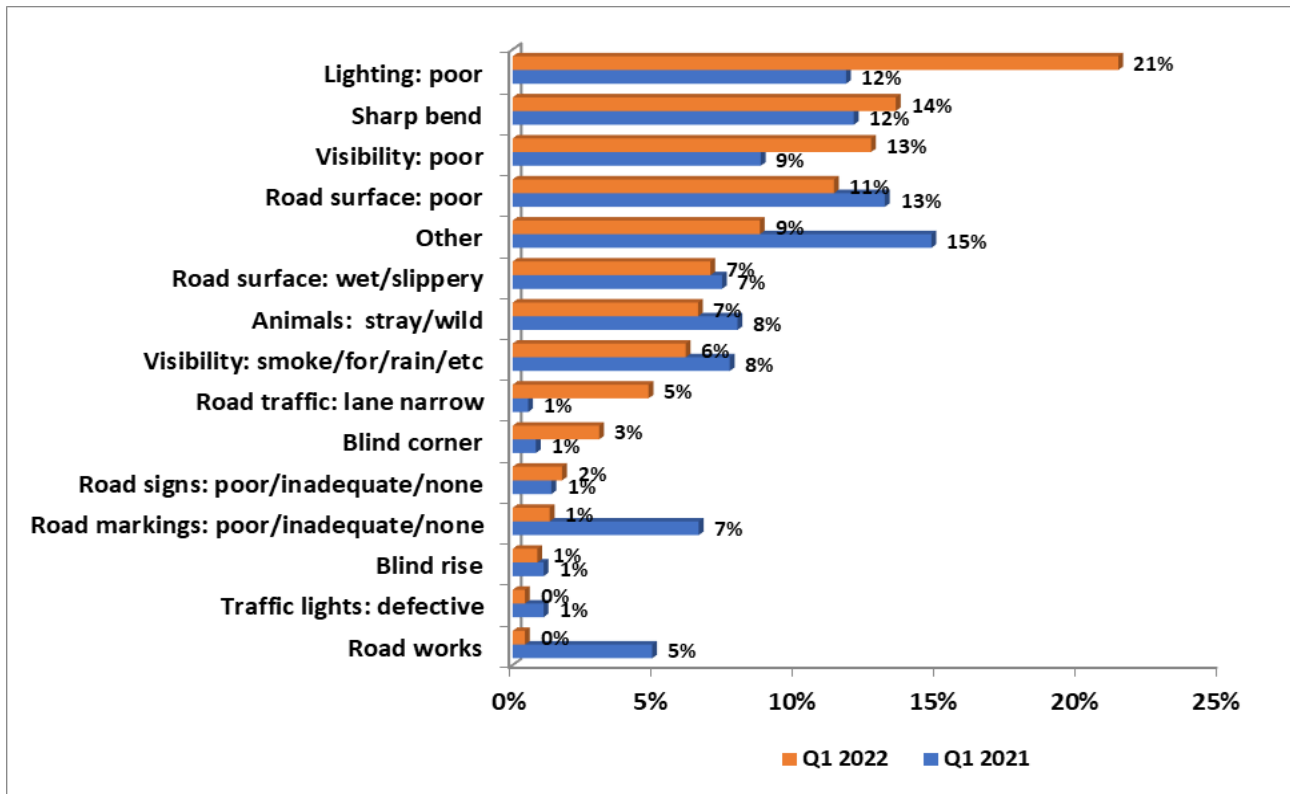


Figure 8: Percentage distribution of road and environmental factors

Within the environmental factors poor lighting was the most contributor at 21% from 12% in the same period for the financial year 2021/22. This can be attributed Poor visibility also increased by 4%.

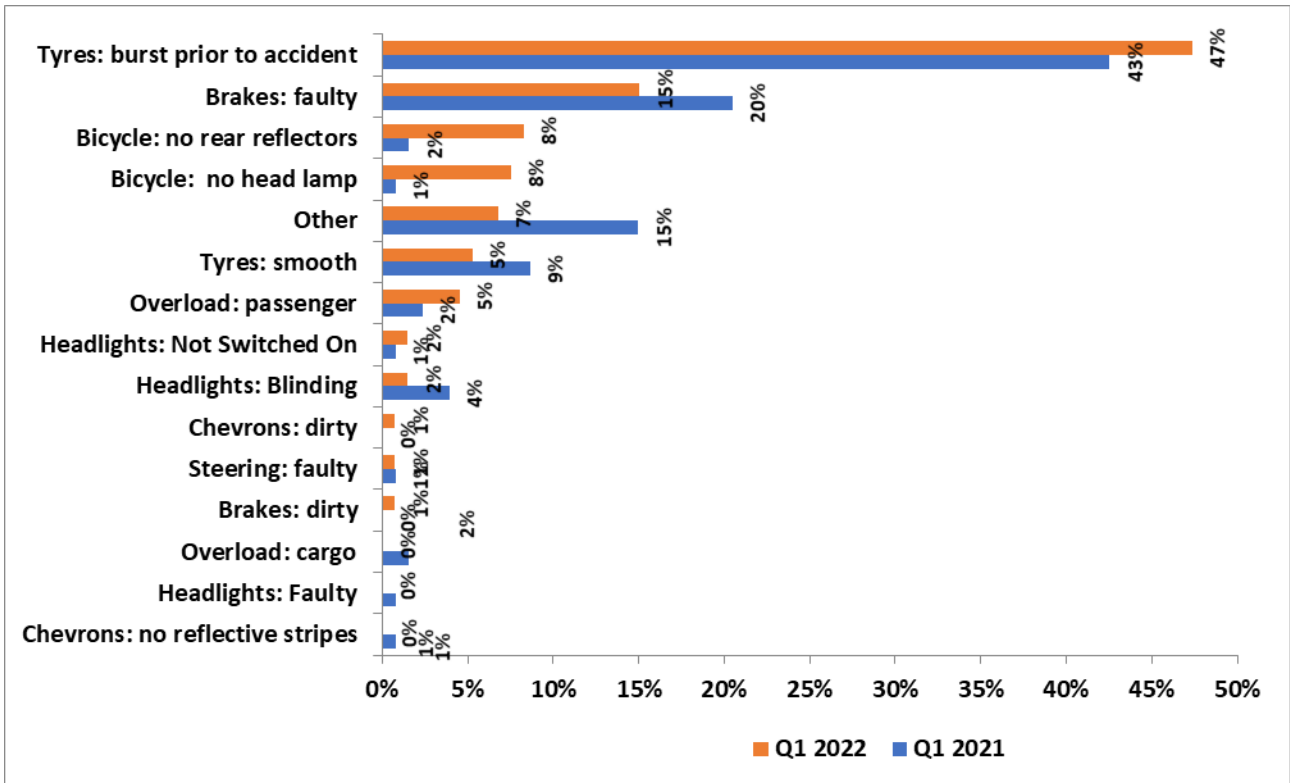


Figure 9: Percentage distribution for vehicle factor

According to the figure above as regards vehicle contributions, tyre burst are the highest fatal crash contributors at an average of 45% contribution.

4. ROAD FATALITIES

The section covers fatalities data. Fatalities are defined as when a person or persons that are killed during or immediately after a crash, or death occurs within 30 days after a crash as a direct result of such crash. The section encompasses number of fatalities, percentage distribution per road user, gender, race and age.

4.1 Number of fatalities per province

Number of Fatalities per Province										
Quarter 1	EC	FS	GP	KZN	LI	MP	NC	NW	WC	RSA
Apr - Jun 2021	435	186	657	606	366	338	120	196	320	3 224
Apr - Jun 2022	346	178	641	646	361	317	102	186	379	3 156
Change	-89	-8	-16	40	-5	-21	-18	-10	59	-68
% Change	-20.5	-4.3	-2.4	6.6	-1.4	-6.2	-15.0	-5.1	18.4	-2.1

Table 2: Comparison of fatalities per province for the two quarters

The table above provides a comparison between the first quarter of the financial year 2021/22 and first quarter of the financial year 2022/23. Nationally there has been a decrease of 68 (2.1%) fatalities. At a provincial level 7 (seven) provinces recorded a decrease and 2 (two) provinces namely KwaZulu-Natal and Western Cape recorded increases in fatalities. Regarding decrease in number of fatalities the highest decreases were in Eastern Cape at (-89) followed by Mpumalanga at (-21). The highest percentage (%) decrease was in Eastern Cape at 20.5% and Northern Cape at 15.0.

4.2 Number of Fatalities per Road User Group

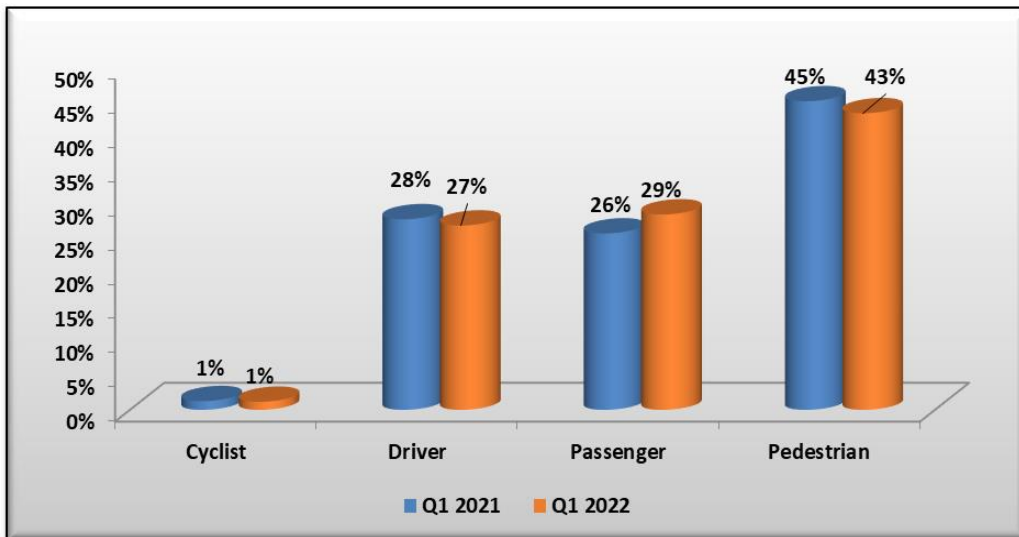


Figure 10: Percentage distribution of fatalities per road user

The percentage distribution of fatalities per road user groups are reflected in the figure above. From the above figure during the period under review an average of 44% of road fatalities are pedestrians. Drivers and passengers averaged 27.5% during the same period.

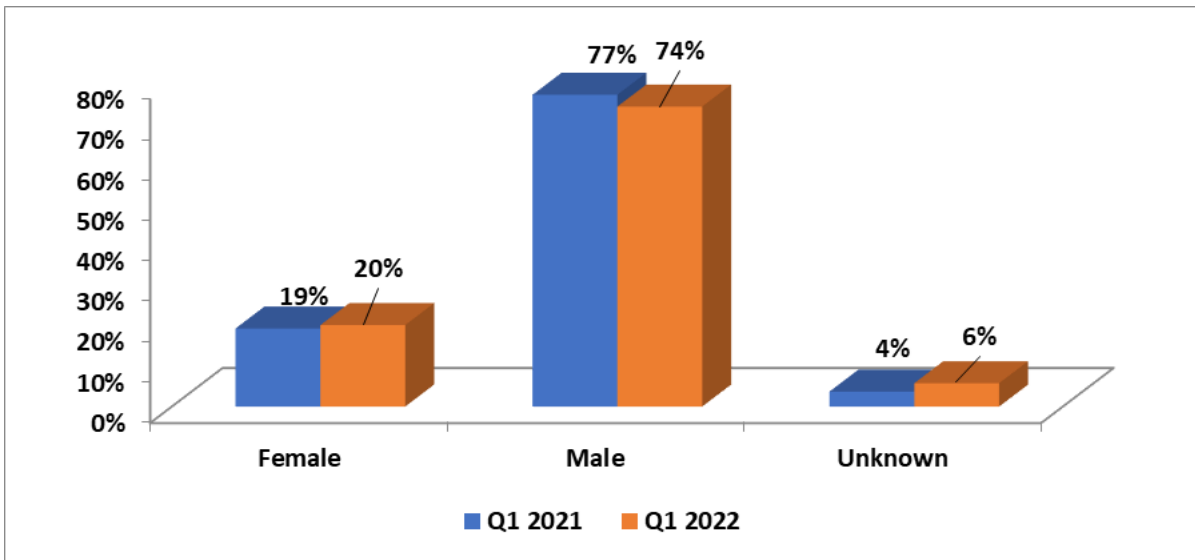


Figure 11: Percentage distribution of fatalities per gender

The figure above shows fatalities per gender. From the above figure three quarters of road fatalities were male during the period under review.

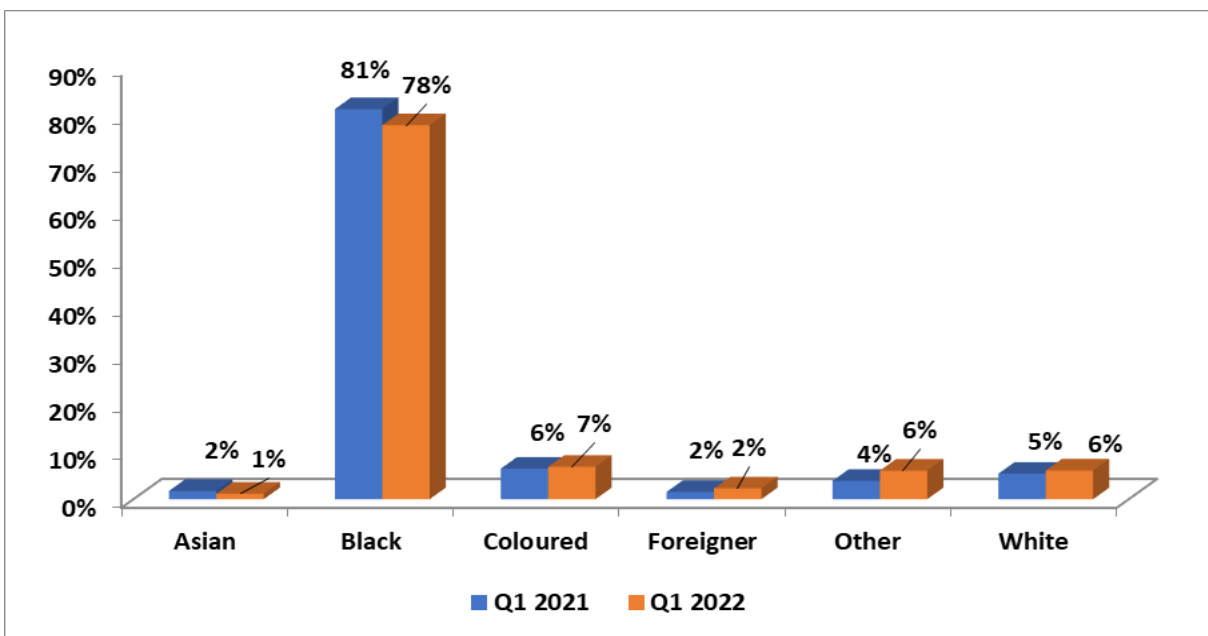


Figure 12: Percentage distribution of fatalities per race

From the above figure on average 79.5% of road fatalities for the period under review were blacks.

4.3 Road user group fatalities per age group

The figures below provide information regarding the fatalities per age and road user group for the period April to June 2021 and April to June 2022. The below figures will show fatalities per age within a road user group.

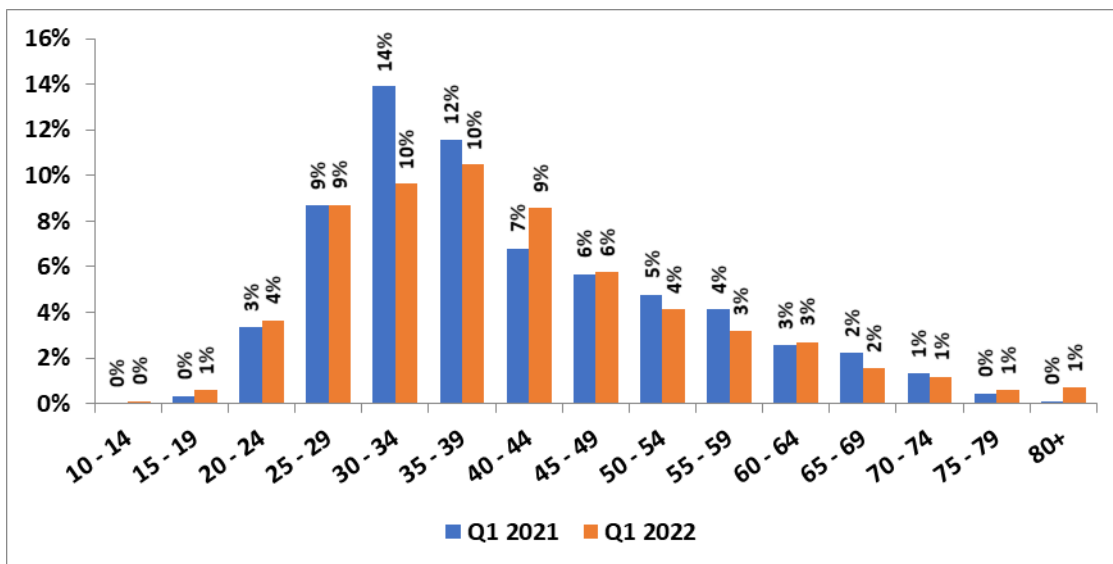


Figure 13: Percentage distribution of fatalities per age for drivers

In the first quarter of the financial year 2020/21 the percentage of driver fatalities in the age group 25 to 44 was 42% and for the same period in financial year 2022/23 was 38%. More young adults die on the roads as drivers than any other age grouping.

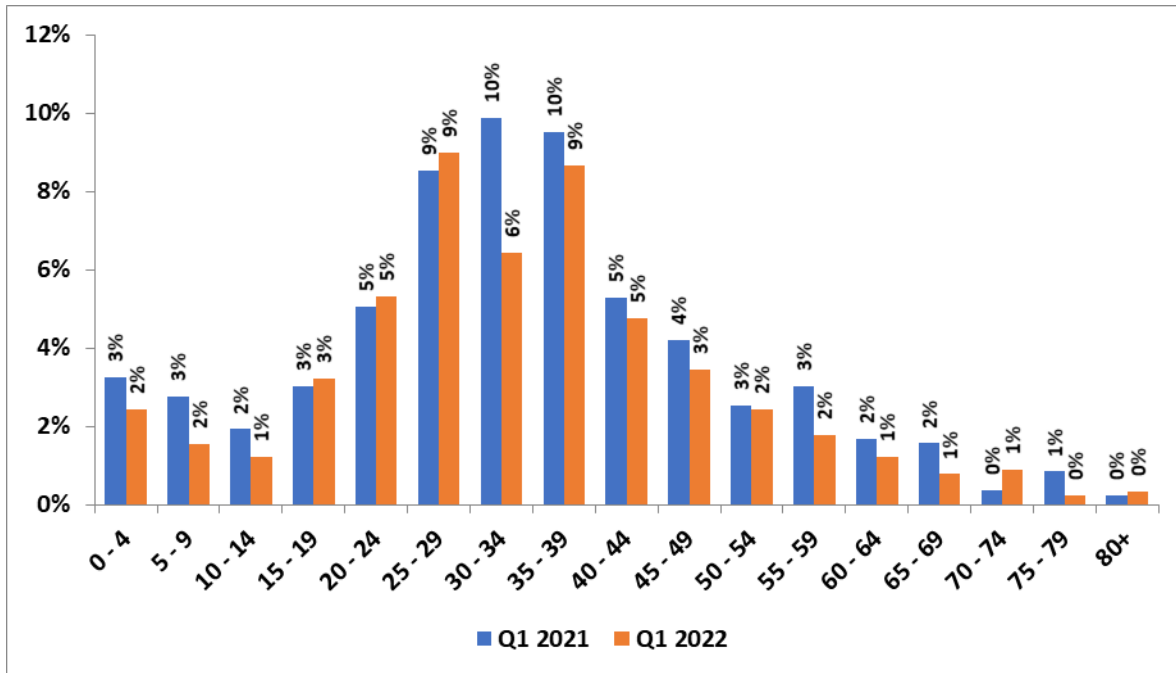


Figure 14: Percentage distribution of fatalities per age for passengers

In the first quarter of the financial year 2020/21 the percentage of passenger fatalities in the age group 25 to 44 was 33% and for the same period in financial year 2022/23 was 29%. More than a quarter of passenger fatalities are youth.

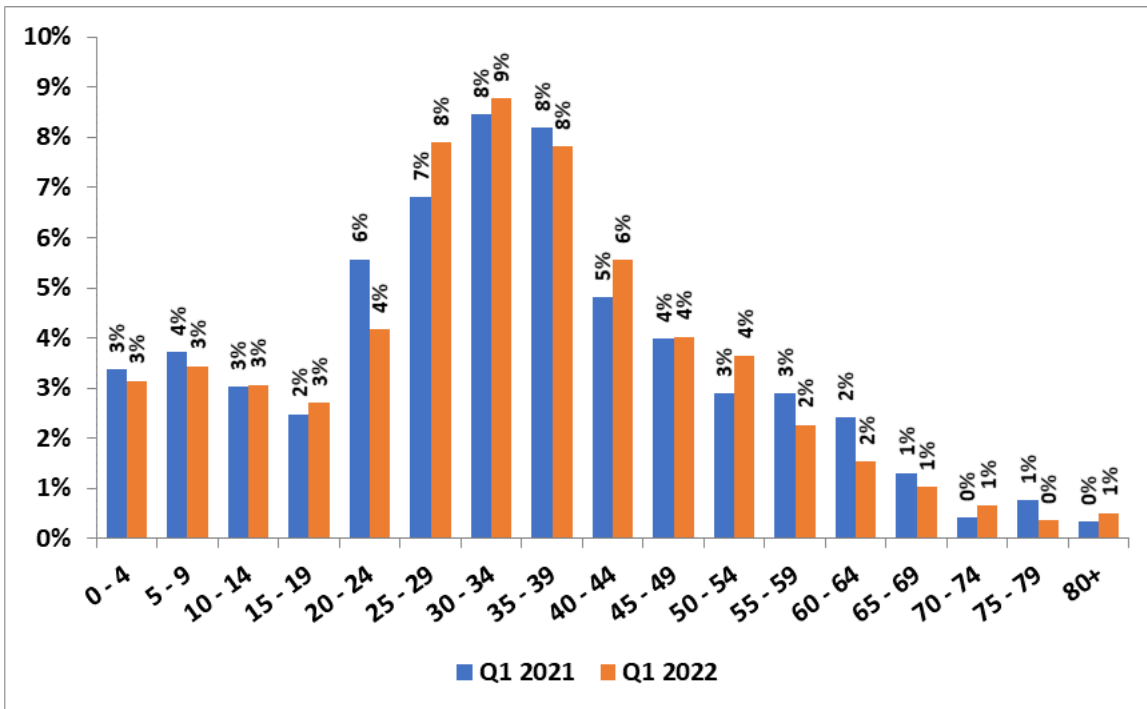


Figure 15: Percentage distribution of fatalities per age for pedestrians

In the first quarter of the financial year 2020/21 the percentage of pedestrian fatalities in the age group 25 to 44 was 28% and for the same period in financial year 2022/23 was 31%. More young adults die on the roads as pedestrians than any other age grouping.

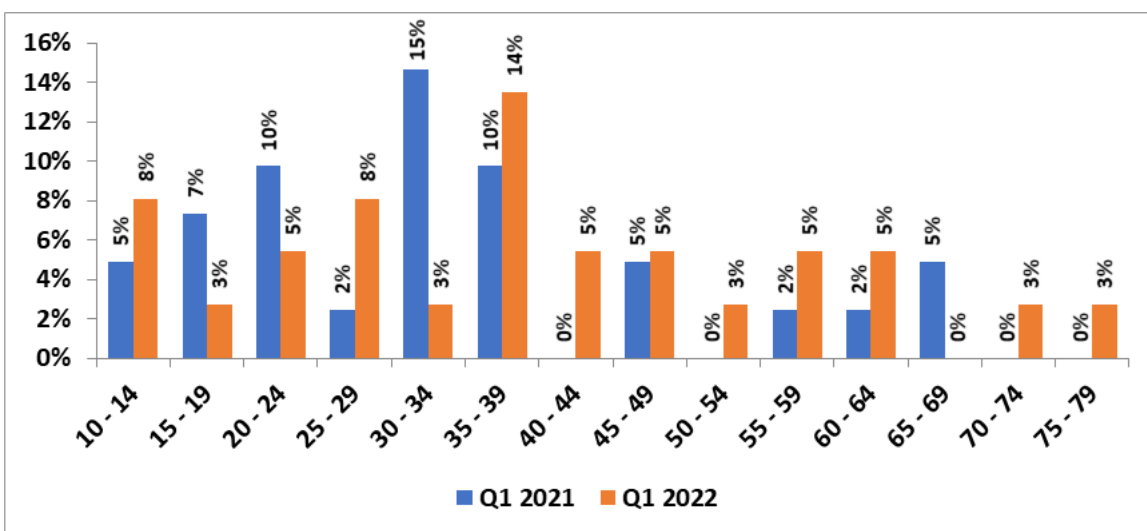


Figure 16: Percentage distribution of fatalities per age for cyclists

In the first quarter of the financial year 2020/21 the percentage of cyclist fatalities in the age group 25 to 44 was 27% and for the same period in financial year 2022/23 was 30%. More young adults die on the roads as cyclists than any other age grouping.

More youth (young adults) are dying on the roads in any category than any other age group.

5. MAJOR CRASHES INVESTIGATED

A total number of twenty-six (26) major crashes were reported and investigated during the period under review. One-hundred and seventy-nine (179) people were killed, and two-hundred and seventy-six (276) people sustained injuries in these major crashes.

The figure below shows comparison of the number of major crashes, fatalities and injuries and investigated during the period under review. Major crashes have increased by 23.81%, fatalities increase by 43.20% and injuries increased by 81.58% when comparing first quarter of financial year 2021/22 with first quarter of financial year 2022/23.

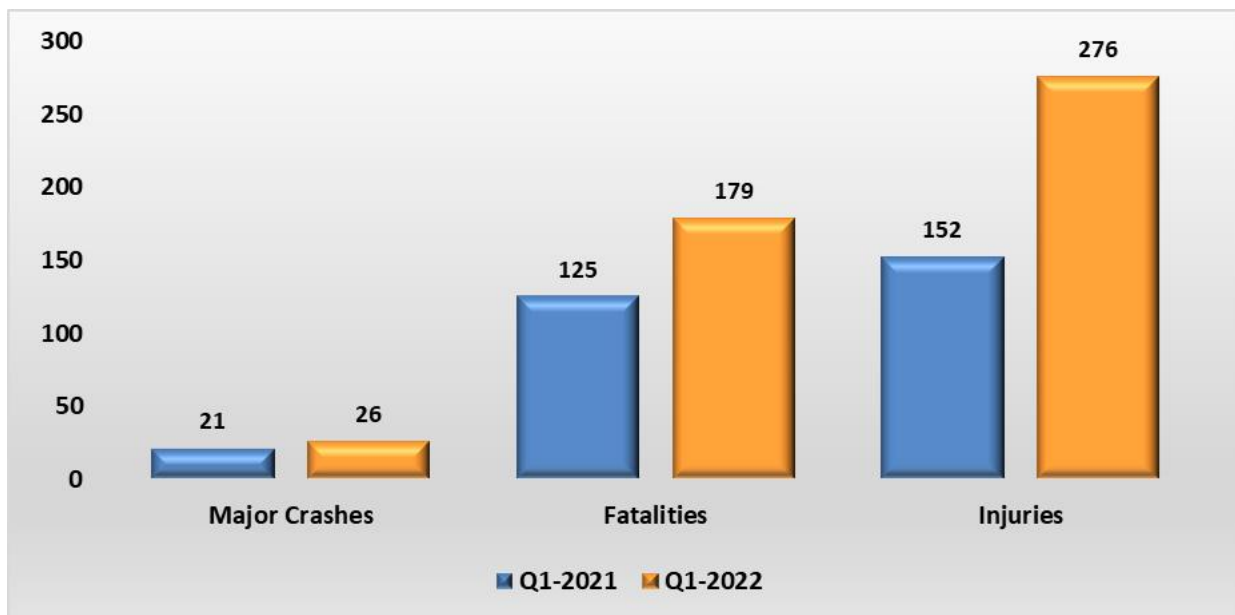


Figure 17: Major crash casualties during 1st quarters

The figures below show the occurrence of major crashes and fatalities across the provinces during the first quarters of 2021/22 and 2022/23.

KwaZulu-Natal and Limpopo had the highest number of major crashes and fatalities for both periods.

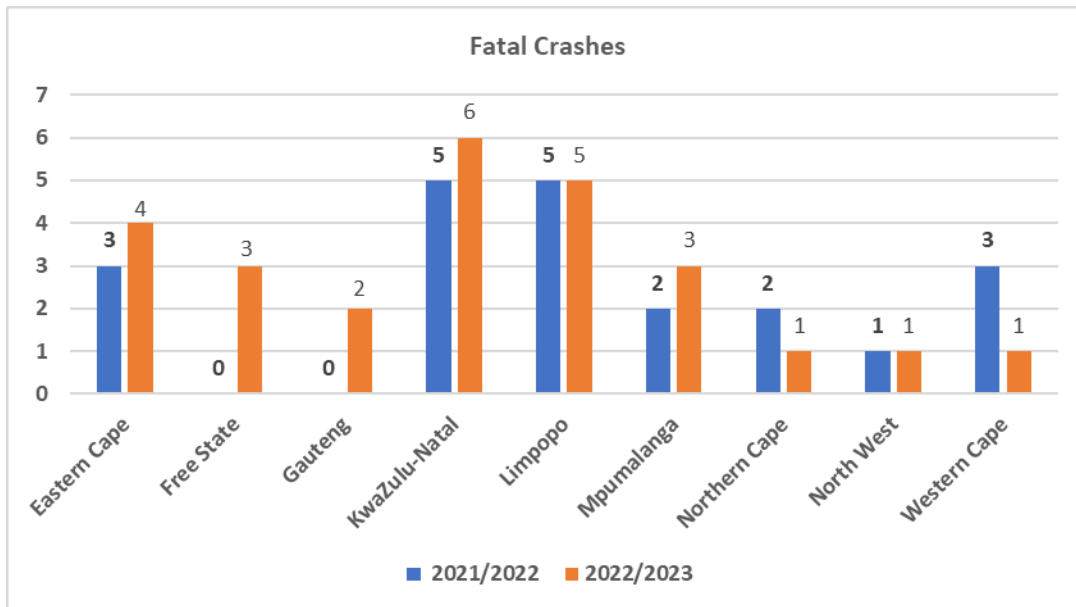


Figure 18: Major crash per province

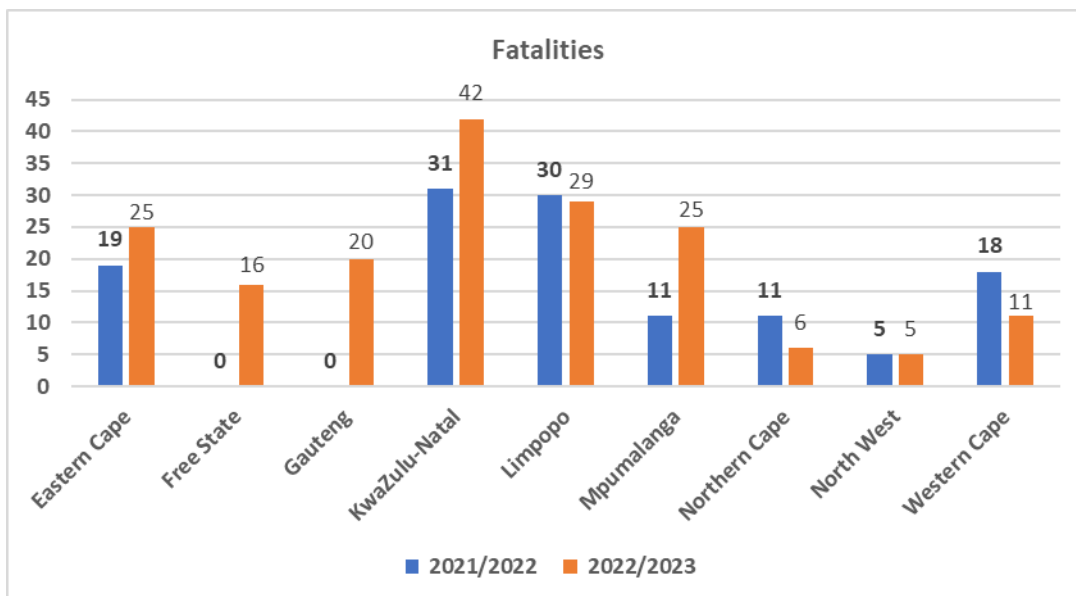


Figure 19: Fatalities per province

5.1 Vehicle types comparison for major crashes

The figure below shows vehicle types involved in major crashes for the period under review. In the first quarter of the financial year 2021/22 Light Delivery Vehicles (LDVs) and Trucks contributed 30% each to major crashes. In the first quarter of the financial year 2022/23 Light Motor Vehicles (LMVs) contributed 39% and Trucks contributed 17% to major crashes.

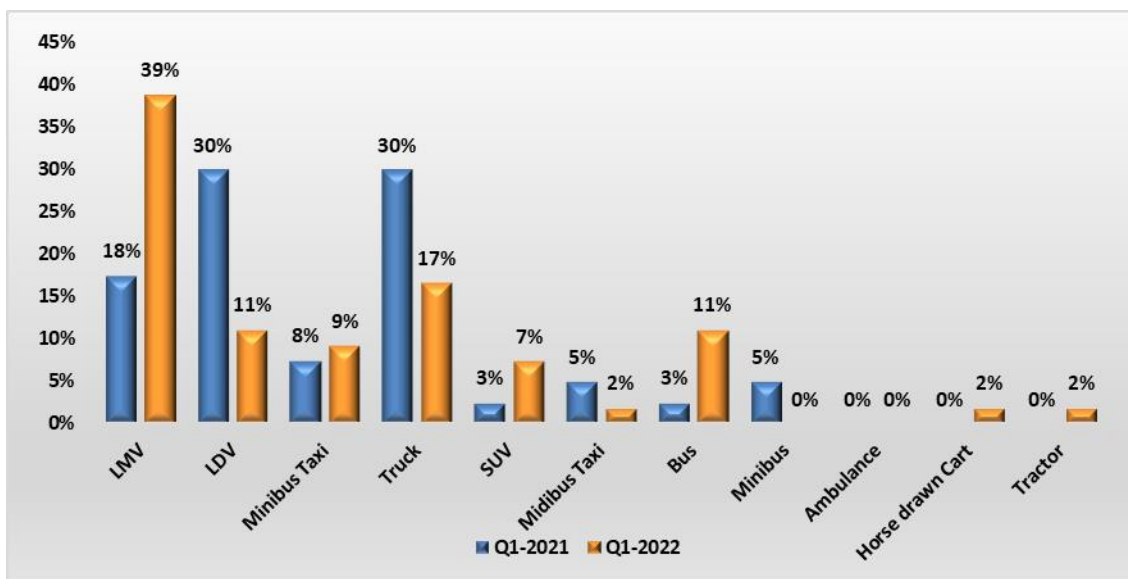


Table 3: Vehicle types involved in major crashes

5.2 Major crash type comparison on major crashes

The figure below shows major crash types for the period under review. Head-on collisions contributed 50% of major crashes for the first quarter of both financial years.

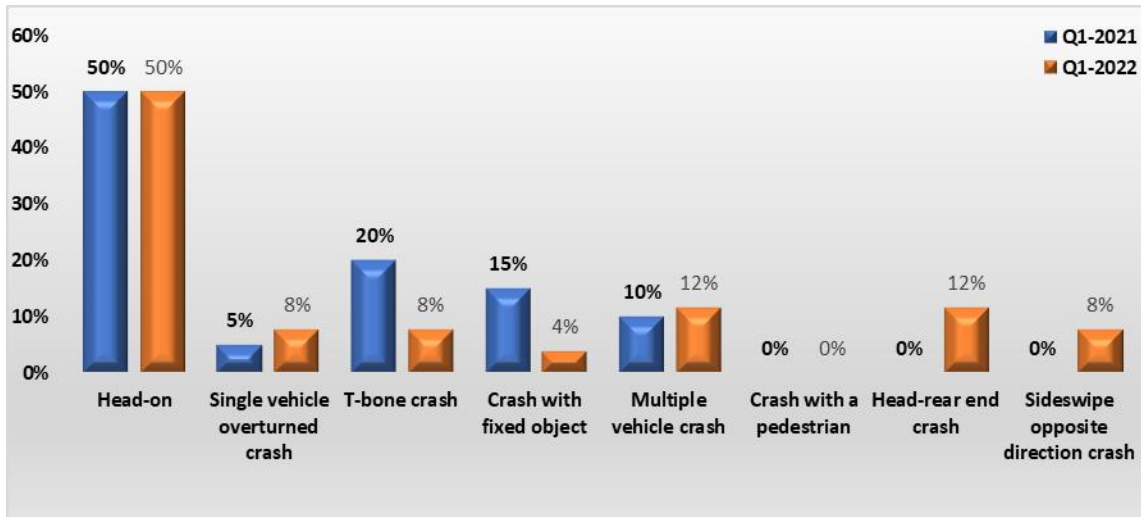


Figure 20: Crash types that occurred for major crashes investigated

5.3 Contributing factors to the major crashes

The table below indicates the human factors as the highest contributor to major crashes for first quarter of both financial years.

	1 st Quarter of 2021/2022	1 st Quarter of 2022/2023
Human Factors	90%	85%
Vehicle Factors	3%	10%
Road and Environmental Factors	7%	5%

Table 4: Contributory factors

SECTION B

1. INTRODUCTION

The section covers vehicle population and human mobility data, as well as driver population. The vehicle population data will encompass the number of registered vehicles inclusive of the status of their roadworthiness and licencing, as well as human mobility in terms of the number of persons per vehicle. The driver population data covers the number of registered drivers including the status and categories of licences.

2. VEHICLE POPULATION

2.1 Number of Registered Vehicles

The number of registered vehicles increased by 240,989 (1.87%) from 12,913,174 in June 2021 to 13,154,163 vehicles in June 2022. Detail per type of vehicle is given in table below.

Number of Registered Vehicles	Number registered June 2021	Number registered June 2022	Change	% Change	% of Group June 2022	% of Total June 2022
Motorised Vehicles						
Motorcars	7 629 473	7 784 293	154 820	2,03	65,35	59,18
Minibuses	348 391	354 465	6 074	1,74	2,98	2,69
Buses	65 154	64 701	-453	-0,70	0,54	0,49
Motorcycles	344 946	354 644	9 698	2,81	2,98	2,70
LDV's - Bakkies	2 664 802	2 704 936	40 134	1,51	22,71	20,56
Trucks	384 865	393 849	8 984	2,33	3,31	2,99
Other & Unknown	250 485	255 001	4 517	1,80	2,14	1,94
Total Motorised	11 688 116	11 911 889	223 774	1,91	100,00	90,56
Towed Vehicles						
Caravans	98 096	97 896	-200	-0,20	7,88	0,74
Heavy Trailers	215 496	225 820	10 324	4,79	18,18	1,72
Light Trailers	896 842	904 198	7 356	0,82	72,79	6,87
Other & Unknown	14 625	14 360	-265	-1,81	1,16	0,11
Total Towed	1 225 059	1 242 274	17 216	1,41	100,00	9,44
All Vehicles	12 913 174	13 154 163	240 989	1,87		100,00

Table 5: Number of registered vehicles per type

The table above shows that the highest percentage change within motorized vehicles category was in motorcycles with an increase of 2.81%. Trucks followed with an increase of 2.33%. Within the towed vehicles category heavy trailers increased by 4.79%.

The monthly percentage change over the past year for specific types of vehicles; as well as motorised and towed vehicles, are shown in the figures below.

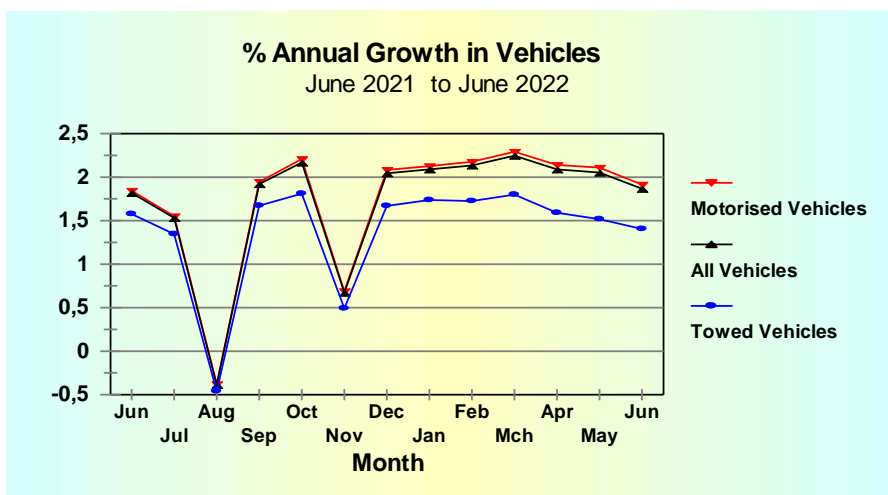


Figure 21: Percentage Annual Growth in vehicles

The monthly percentage change over the past year for motorised vehicles are shown in the figure below.

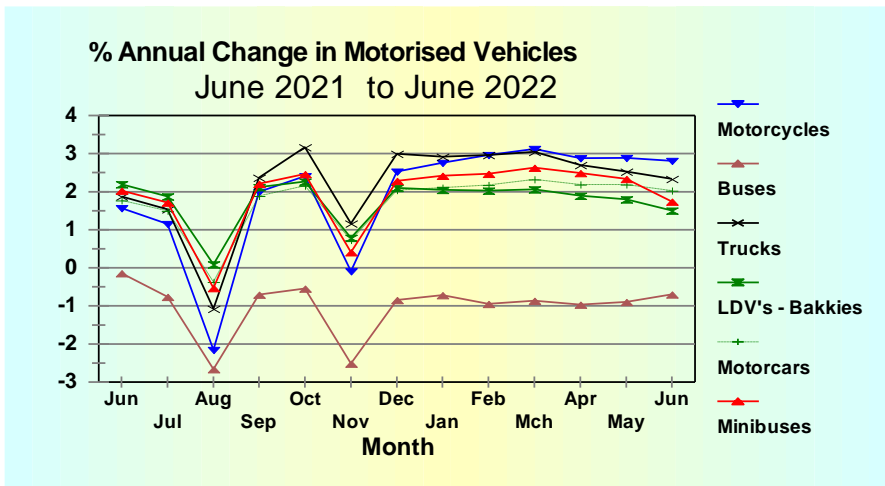


Figure 22: Percentage annual change in motorised vehicles

The total motor vehicle population per province for June 2021 and June 2022 is given in table below and the vehicle population percentage growth is reflected in the figure below.

Number of Registered Vehicles per Province	Number registered June 2021	Number registered June 2022	Change	% Change	% of Total June 2022
Gauteng	4 951 120	5 053 223	102 103	2,06	38,42
KwaZulu-Natal	1 730 954	1 764 026	33 072	1,91	13,41
Western Cape	2 075 012	2 115 405	40 393	1,95	16,08
Eastern Cape	865 053	875 137	10 084	1,17	6,65
Free State	648 280	656 269	7 989	1,23	4,99
Mpumalanga	930 975	938 867	7 892	0,85	7,14
North West	653 453	669 176	15 723	2,41	5,09
Limpopo	765 657	784 763	19 106	2,50	5,97
Northern Cape	292 670	297 297	4 627	1,58	2,26
RSA	12 913 174	13 154 163	240 989	1,87	100

Table 6: Number of registered vehicles per province

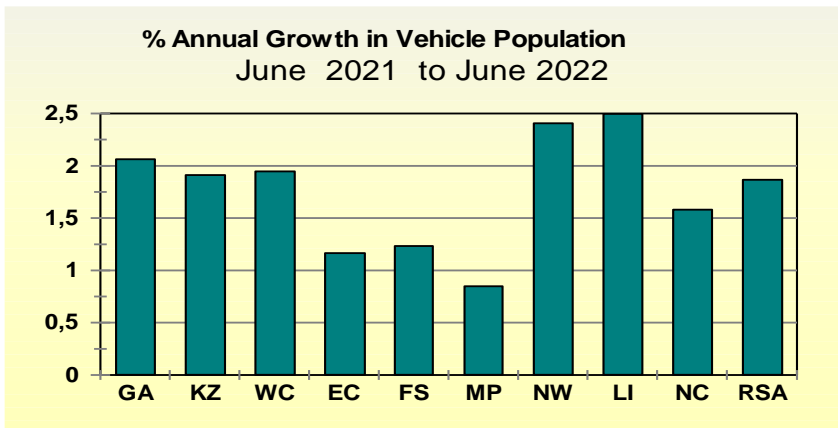


Figure 23: Percentage Annual Growth in Vehicle Population

The percentage vehicles registered per province as at 30 June 2022 is reflected in the figure below.

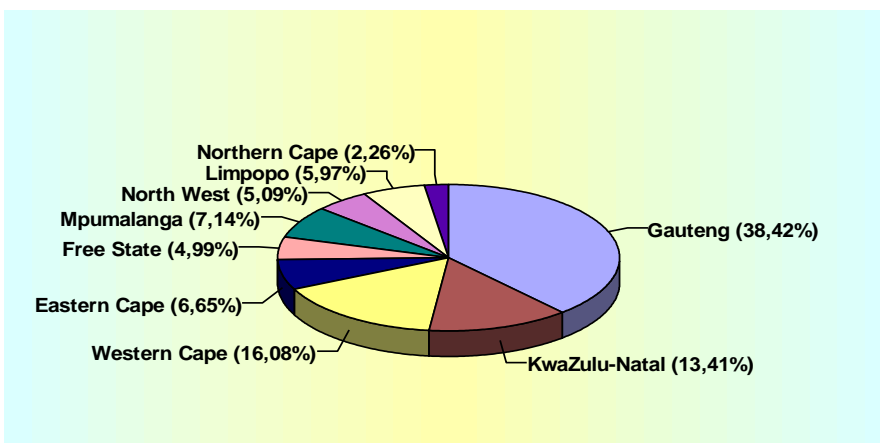


Figure 24: Percentage Vehicle Registered per province

The information in the figure above shows that 38.42% of vehicle's population were registered in Gauteng, 16.08% in Western Cape and 13.41% in KwaZulu-Natal.

More detailed information on number and types of vehicles registered per province for June 2021 and June 2022 is given in the table under **Appendix A**.

3. DRIVER POPULATION

3.1 Learner Driving Licences

The number of learner driving licences issued increased by 160,509 (17.15%) from 936,071 in June 2021 to 1,096,580 in June 2022. Details on the number of learner driving licences issued per category is given in table below and graphically reflected in the figure below.

Number of Learner Licences Issued				
Category	June 2021	June 2022	Change	% Change
1	28 198	36 142	7 944	28,17
2	169 056	201 390	32 334	19,13
3	738 817	859 048	120 231	16,27
Total	936 071	1 096 580	160 509	17,15

Table 7: Number of learner licences issued

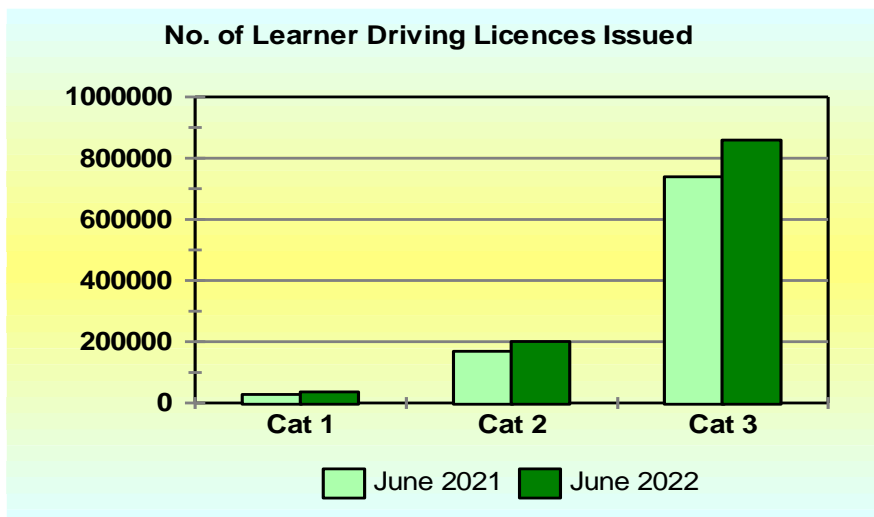


Figure 25: Number of learner license issued

The table below shows the number and percentage change per Province of learner licences issued.

Table 10: Number of Learners Licences Issued per Province										
Year	GA	KZ	WC	EC	FS	MP	NW	LI	NC	RSA
June 2021	291 868	138 351	141 787	77 109	46 803	87 867	50 751	81 150	20 385	936 071
June 2022	331 792	194 083	166 340	72 524	53 025	103 387	57 100	95 159	23 170	1 096 580
Change	39 924	55 732	24 553	-4 585	6 222	15 520	6 349	14 009	2 785	160 509
% Change	13,68	40,28	17,32	-5,95	13,29	17,66	12,51	17,26	13,66	17,15

Table 8: Number of learner licences issued per province

Eastern Cape was the only province that had a decline in number of learner licences issued for the period under review. The highest increase learner licences issued was KwaZulu-Natal at 40.28% followed by Mpumalanga at 17.66% then Western Cape at 17.32 and Limpopo at 17.26%.

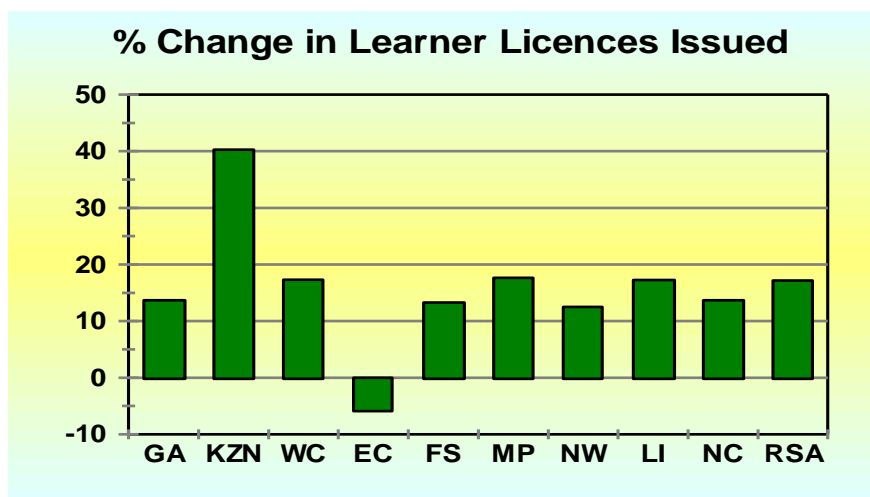


Figure 26: Percentage change in learner licences issued per province

More detailed information on number and categories of learner licences issued per province for June 2021 and June 2022 is given in the table under **Appendix B-1**.

3.2 Driving Licences Issued

3.2.1 Number of Driving Licences Issued

The number of driving licences issued increased by 49,1936 (3.47%) from 14,161,022 in June 2021 to 14,652,958 in June 2022. Details on the number of driving licences issued per category is given in table and graphically presented in the figure below.

Number of Driving Licences Issued				
Category	June 2021	June 2022	Change	% Change
A	501 341	508 446	7 105	1,42
A1	122 546	122 526	-20	-0,02
B	3 200 056	3 311 223	111 167	3,47
C	24 707	25 105	398	1,61
C1	4 895 928	5 212 499	316 571	6,47
EB	3 645 674	3 649 450	3 776	0,10
EC	1 187 311	1 241 310	53 999	4,55
EC1	583 459	582 399	-1 060	-0,18
Total	14 161 022	14 652 958	491 936	3,47

Table 9: Number of driving licences issued

Driving licences:

A	Motorcycle > 125 cub.cm	A1	Motorcycle < 125 cub.cm	B	Motor vehicle < 3,5000 kg
C	Motor vehicle > 16,000 kg	C1	Motor vehicle 3,500 - 16,000 kg	EB	Articulated motor vehicle <16,000 kg
		EC	Articulated vehicle > 16,000 kg	EC1	Articulated vehicle 3,500 - 16,000 kg

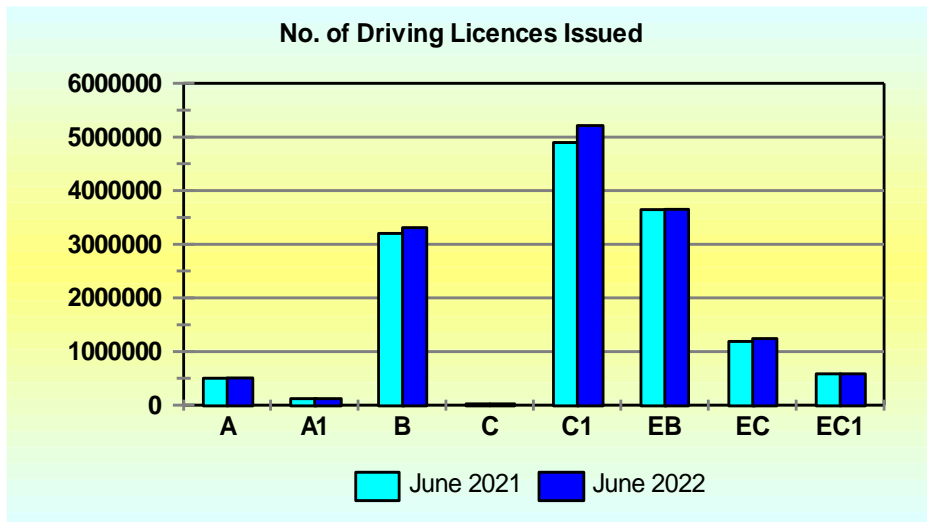


Figure 27: Number of driving licences issued

From the above table the highest percentage change is for Categories C1 with percentage of 6.47%, followed by category EC and B with 4.55% and 3.47% respectively.

The number and percentage of driving licences issued per category as at the end of June 2022 is reflected in the table below.

Number and % of Driving Licences Issued per Category			
Category	Description	Number	%
A	Motorcycle > 125 cub.cm	508 446	3,47
A1	Motorcycle < 125 cub.cm	122 526	0,84
B	Motor vehicle < 3,5000 kg	3 311 223	22,60
C	Motor vehicle >16,000 kg	25 105	0,17
C1	Motor vehicle 3,500 - 16,000 kg	5 212 499	35,57
EB	Articulated motor vehicle < 16,000 kg	3 649 450	24,91
EC	Articulated vehicle > 16,000 kg	1 241 310	8,47
EC1	Articulated vehicle 3,500 - 16,000 kg	582 399	3,97
Total		14 652 958	100

Table 10: Number and percentage of driving licences issued per category

The total number of driving licences issued per province for June 2021 and June 2022 is given in table below and the driving licences issued percentage change is reflected in the figure below.

Number of Driving Licences Issued per Province										
Year	GA	KZ	WC	EC	FS	MP	NW	LI	NC	RSA
June 2021	4 947 432	2 271 692	2 121 193	1 034 843	689 834	1 066 609	663 524	1 104 562	261 333	14 161 022
June 2022	5 123 402	2 351 992	2 189 383	1 064 724	708 640	1 109 907	685 710	1 148 006	271 194	14 652 958
Change	175 970	80 300	68 190	29 881	18 806	43 298	22 186	43 444	9 861	491 936
% Change	3,56	3,53	3,21	2,89	2,73	4,06	3,34	3,93	3,77	3,47

Table 11: Number of driving licences issued per province

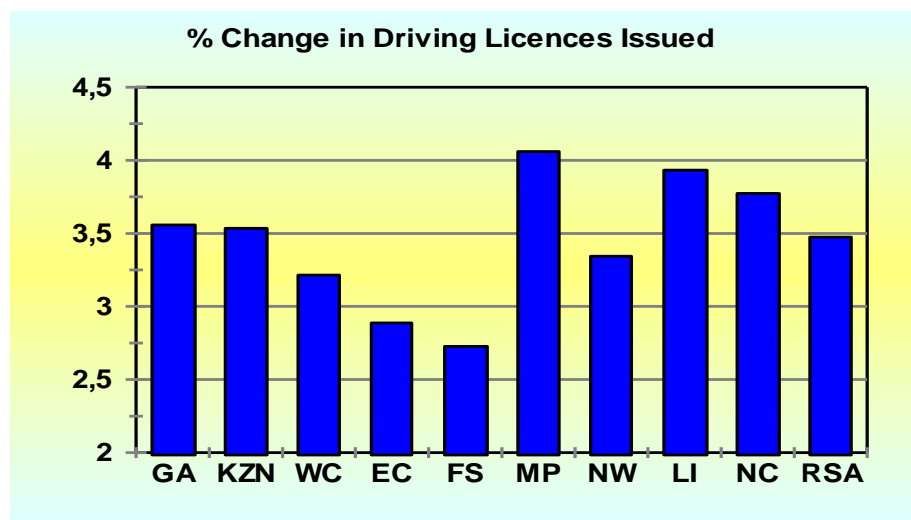


Figure 28: Percentage change in driving licences issued

More detailed information on number of driving licences and categories issued per province for June 2021 and June 2022 is given in the table under **Appendix B-2**.

3.2.2 Professional Driving Permits Issued

The number of Professional Driving Permits (PrDP's) issued decreased by 137,251 (11.68%) from 1,175,278 in June 2021 to 1,038,027 in June 2022. Detail on the number of PrDPs issued per category is given in table below and graphically represented in the figure below.

Number of PrDP's Issued				
Category	June 2021	June 2022	Change	% Change
G	7 921	6 143	-1 778	-22,45
P G	1 118 213	980 930	-137 283	-12,28
D G	140	149	9	6,43
D P G	49 004	50 805	1 801	3,68
Total	1 175 278	1 038 027	-137 251	-11,68

Table 12: Number of PrDP's issued

Professional Driving Permits (PrDPs)

G: Goods

P: Passengers

D: Dangerous goods

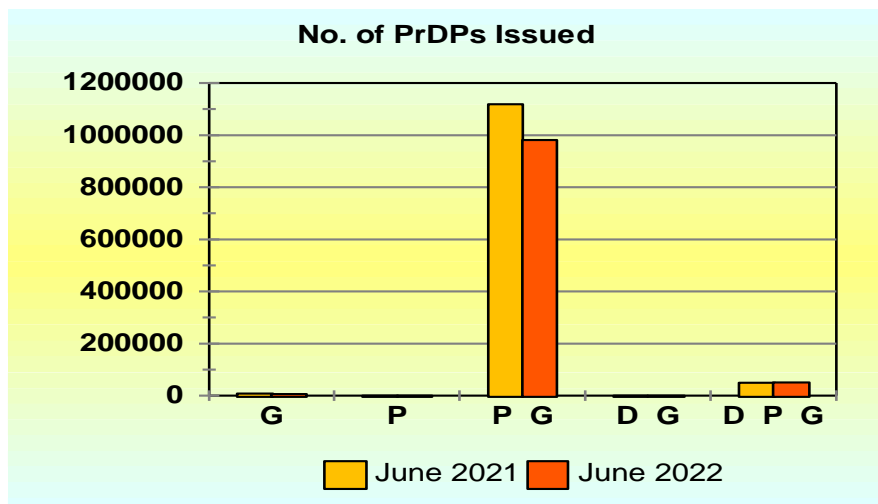


Figure 29: Number of PrDP's issued

The total number of professional driving permits issued per province for June 2021 and June 2022 is given in table below and the professional driving permits issued percentage change is reflected in the figure below.

Number of Professional Driving Permits (PrDP's) Issued per Province										
Year	GA	KZ	WC	EC	FS	MP	NW	LI	NC	RSA
June 2021	321 042	211 006	166 288	96 574	67 379	115 218	56 074	114 235	27 462	1 175 278
June 2022	272 438	198 610	151 459	77 180	57 680	105 646	56 501	92 859	25 654	1 038 027
Change	-48 604	-12 396	-14 829	-19 394	-9 699	-9 572	427	-21 376	-1 808	-137 251
% Change	-15,14	-5,87	-8,92	-20,08	-14,39	-8,31	0,76	-18,71	-6,58	-11,68

Table 13: Number of professional driving permits (PrDP's) issued per province

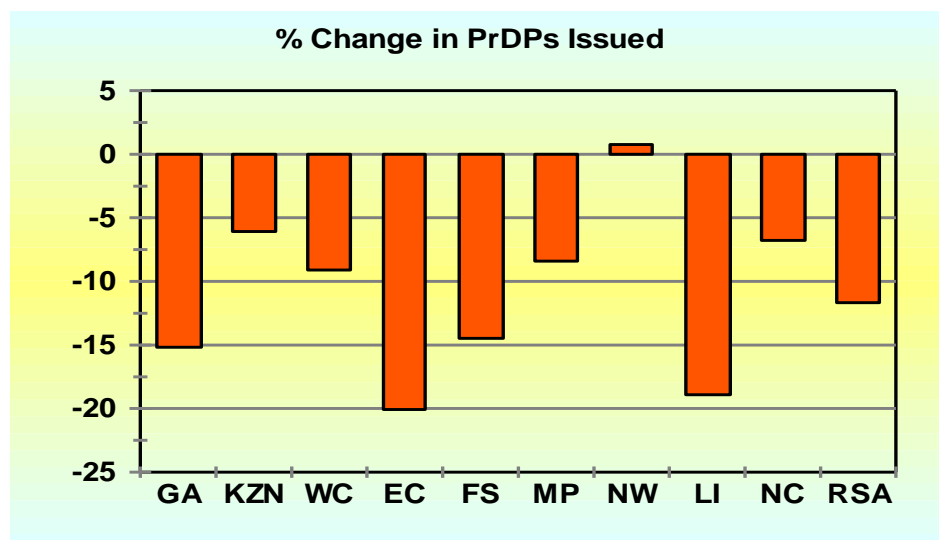


Figure 30: Percentage in PrDP's issued per province

More detailed information on number of driving licences and categories issued per province for June 2021 and June 2022 is given in the table under **Appendix B-3**.

Compiled by

.....

Ms Magadi Gainewe

Manager: Data Analysis and Reporting

Date:

Reviewed and supported by

.....

Mr Emmanuel Phasha

General Manager: Road Traffic Information

Date:

Recommended by

.....

Mr Kevin Kara-Vala

Executive Manager: Road Traffic Information & Technology

Date:

Approved by

.....

Advocate Makhosini Msibi

Chief Executive Officer

Date:

APPENDIX A

Jun 2021	Number of Registered Vehicles per Province									Total RSA
	GA	KZ	WC	EC	FS	MP	NW	LI	NC	
Motorised Veh's										
Motorcars	3 160 086	1 050 189	1 310 491	485 237	326 338	457 119	339 946	365 510	134 557	7 629 473
Minibuses	131 415	58 784	37 748	26 445	13 123	26 459	21 247	26 934	6 236	348 391
Buses	20 399	8 143	6 952	4 835	3 312	8 523	4 138	7 005	1 847	65 154
Motorcycles	142 903	30 836	85 999	21 409	17 716	17 367	12 548	8 679	7 489	344 946
LDV's - Bakkies	869 940	380 715	344 529	212 320	134 874	230 914	160 890	247 534	83 086	2 664 802
Trucks	142 156	51 744	46 526	22 857	23 095	43 959	17 634	27 637	9 257	384 865
Other & Unkwn	38 252	33 698	42 725	18 460	36 465	29 155	22 766	18 698	10 269	250 485
Sub-Total	4 505 151	1 614 109	1 874 970	791 563	554 923	813 496	579 169	701 997	252 741	11 688 116
Towed Veh's										
Caravans	36 599	6 712	18 633	5 102	7 088	9 698	6 129	5 462	2 673	98 096
Heavy Trailers	67 423	25 417	24 987	7 644	20 909	39 092	11 463	12 400	6 161	215 496
Light Trailers	339 761	83 317	154 273	59 251	63 532	66 938	54 685	44 660	30 425	896 842
Unknown	2 187	1 400	2 149	1 494	1 829	1 752	2 007	1 139	671	14 625
Sub-Total	445 970	116 846	200 042	73 491	93 358	117 480	74 284	63 661	39 930	1 225 059
All Vehicles	4 951 120	1 730 954	2 075 012	865 053	648 280	930 975	653 453	765 657	292 670	12 913 174
Jun 2022										
Jun 2022	Province									Total RSA
	GA	KZ	WC	EC	FS	MP	NW	LI	NC	
Motorised Veh's										
Motorcars	3 227 876	1 071 004	1 336 368	492 445	330 095	462 809	349 314	377 495	136 887	7 784 293
Minibuses	132 406	60 031	38 011	27 069	13 355	27 021	22 196	27 755	6 621	354 465
Buses	20 306	8 078	6 900	4 741	3 406	8 192	4 116	7 015	1 947	64 701
Motorcycles	147 667	32 583	89 079	21 630	17 402	17 283	12 748	8 772	7 480	354 644
LDV's - Bakkies	889 227	385 980	348 341	213 163	136 494	232 118	164 087	251 550	83 976	2 704 936
Trucks	146 722	53 110	47 398	23 096	23 915	44 161	18 196	27 828	9 423	393 849
Other & Unkwn	40 057	33 771	43 779	18 607	36 905	29 409	23 317	18 788	10 369	255 001
Sub-Total	4 604 261	1 644 557	1 909 876	800 751	561 572	820 993	593 974	719 203	256 703	11 911 889
Towed Veh's										
Caravans	36 349	6 621	19 122	5 099	7 017	9 505	6 092	5 449	2 642	97 896
Heavy Trailers	71 622	26 973	25 960	7 877	22 222	39 656	11 691	13 409	6 410	225 820
Light Trailers	338 834	84 526	158 280	59 968	63 672	67 005	55 457	45 566	30 890	904 198
Unknown	2 158	1 349	2 167	1 442	1 786	1 708	1 963	1 136	652	14 360
Sub-Total	448 963	119 469	205 529	74 386	94 697	117 874	75 203	65 560	40 594	1 242 274
All Vehicles	5 053 223	1 764 026	2 115 405	875 137	656 269	938 867	669 176	784 763	297 297	13 154 163
% Change Jun 2020-2021										
% Change Jun 2020-2021	Number of Registered Vehicles per Province									Total RSA
	GA	KZ	WC	EC	FS	MP	NW	LI	NC	
Motorised Vehicles										
Motorcars	2,15	1,98	1,97	1,49	1,15	1,24	2,76	3,28	1,73	2,03
Minibuses	0,75	2,12	0,70	2,36	1,77	2,12	4,47	3,05	6,17	1,74
Buses	-0,46	-0,80	-0,75	-1,94	2,84	-3,88	-0,53	0,14	5,41	-0,70
Motorcycles	3,33	5,67	3,58	1,03	-1,77	-0,48	1,59	1,07	-0,12	2,81
LDV's - Bakkies	2,22	1,38	1,11	0,40	1,20	0,52	1,99	1,62	1,07	1,51
Trucks	3,21	2,64	1,87	1,05	3,55	0,46	3,19	0,69	1,79	2,33
Other & Unknown	4,72	0,22	2,47	0,80	1,21	0,87	2,42	0,48	0,98	1,80
Sub-Total	2,20	1,89	1,86	1,16	1,20	0,92	2,56	2,45	1,57	1,91
Towed Vehicles										
Caravans	-0,68	-1,36	2,62	-0,06	-1,00	-1,99	-0,60	-0,24	-1,16	-0,20
Heavy Trailers	6,23	6,12	3,89	3,05	6,28	1,44	1,99	8,14	4,04	4,79
Light Trailers	-0,27	1,45	2,60	1,21	0,22	0,10	1,41	2,03	1,53	0,82
Unknown	-1,33	-3,61	0,84	-3,45	-2,32	-2,48	-2,22	-0,22	-2,76	-1,81
Sub-Total	0,67	2,25	2,74	1,22	1,43	0,34	1,24	2,98	1,66	1,41
All Vehicles	2,06	1,91	1,95	1,17	1,23	0,85	2,41	2,50	1,58	1,87

APPENDIX B-1

June 2021	Number of Learners Licences Issued per Province									
Category	GA	KZ	WC	EC	FS	MP	NW	LI	NC	RSA
1	10 828	2 230	8 268	1 491	1 367	1 533	1 061	922	498	28 198
2	45 062	18 507	62 575	16 396	9 489	5 318	5 704	2 874	3 131	169 056
3	235 978	117 614	70 944	59 222	35 947	81 016	43 986	77 354	16 756	738 817
Total	291 868	138 351	141 787	77 109	46 803	87 867	50 751	81 150	20 385	936 071
June 2022	Number of Learners Licences Issued per Province									
Category	GA	KZ	WC	EC	FS	MP	NW	LI	NC	RSA
1	13 549	3 756	10 199	1 891	1 481	1 982	1 348	1 336	600	36 142
2	55 111	27 002	72 258	17 457	10 658	6 237	6 277	3 346	3 044	201 390
3	263 132	163 325	83 883	53 176	40 886	95 168	49 475	90 477	19 526	859 048
Total	331 792	194 083	166 340	72 524	53 025	103 387	57 100	95 159	23 170	1 096 580
% Change	Number of Learners Licences Issued per Province									
Category	GA	KZ	WC	EC	FS	MP	NW	LI	NC	RSA
1	25,13	68,43	23,36	26,83	8,34	29,29	27,05	44,90	20,48	28,17
2	22,30	45,90	15,47	6,47	12,32	17,28	10,05	16,42	-2,78	19,13
3	11,51	38,87	18,24	-10,21	13,74	17,47	12,48	16,96	16,53	16,27
Total	13,68	40,28	17,32	-5,95	13,29	17,66	12,51	17,26	13,66	17,15

Learner Licences :

Category 1 : Motorcycle

Category 2 : Light Motor Vehicle

Category 3 : Heavy Motor Vehicle

APPENDIX B-2

June 2021	Number of Driving Licences Issued per Province									
Category	GA	KZ	WC	EC	FS	MP	NW	LI	NC	RSA
A	182 632	62 828	124 219	35 881	26 615	23 589	20 054	15 821	9 702	501 341
A1	43 232	13 018	29 618	9 201	8 721	6 433	6 162	3 796	2 365	122 546
B	1 190 676	507 117	682 777	264 945	159 776	130 604	125 068	81 549	57 544	3 200 056
C	5 002	4 974	5 617	1 245	542	3 286	1 677	1 863	501	24 707
C1	1 678 191	833 860	267 540	281 461	197 452	559 622	275 232	715 031	87 539	4 895 928
EB	1 283 665	575 587	826 682	314 786	174 279	157 385	139 114	109 253	64 923	3 645 674
EC	347 070	204 780	134 730	80 693	87 660	133 702	60 286	111 027	27 363	1 187 311
EC1	216 964	69 528	50 010	46 631	34 789	51 988	35 931	66 222	11 396	583 459
Total	4 947 432	2 271 692	2 121 193	1 034 843	689 834	1 066 609	663 524	1 104 562	261 333	14 161 022
June 2022	Number of Driving Licences Issued per Province									
Category	GA	KZ	WC	EC	FS	MP	NW	LI	NC	RSA
A	184 646	63 425	127 468	36 273	26 728	23 794	20 185	16 157	9 770	508 446
A1	42 921	12 980	29 988	9 250	8 670	6 386	6 135	3 832	2 364	122 526
B	1 234 677	520 384	714 866	273 460	164 750	132 714	128 084	82 769	59 519	3 311 223
C	5 046	4 991	5 786	1 256	553	3 392	1 697	1 868	516	25 105
C1	1 795 130	889 920	286 984	298 883	208 962	593 586	292 959	751 489	94 586	5 212 499
EB	1 280 388	575 283	835 018	315 502	173 766	156 552	138 777	109 392	64 772	3 649 450
EC	364 589	215 468	139 356	83 392	90 486	141 627	62 144	115 982	28 266	1 241 310
EC1	216 005	69 541	49 917	46 708	34 725	51 856	35 729	66 517	11 401	582 399
Total	5 123 402	2 351 992	2 189 383	1 064 724	708 640	1 109 907	685 710	1 148 006	271 194	14 652 958
% Change	Number of Driving Licences Issued per Province									
Category	GA	KZ	WC	EC	FS	MP	NW	LI	NC	RSA
A	1,10	0,95	2,62	1,09	0,42	0,87	0,65	2,12	0,70	1,42
A1	-0,72	-0,29	1,25	0,53	-0,58	-0,73	-0,44	0,95	-0,04	-0,02
B	3,70	2,62	4,70	3,21	3,11	1,62	2,41	1,50	3,43	3,47
C	0,88	0,34	3,01	0,88	2,03	3,23	1,19	0,27	2,99	1,61
C1	6,97	6,72	7,27	6,19	5,83	6,07	6,44	5,10	8,05	6,47
EB	-0,26	-0,05	1,01	0,23	-0,29	-0,53	-0,24	0,13	-0,23	0,10
EC	5,05	5,22	3,43	3,34	3,22	5,93	3,08	4,46	3,30	4,55
EC1	-0,44	0,02	-0,19	0,17	-0,18	-0,25	-0,56	0,45	0,04	-0,18
Total	3,56	3,53	3,21	2,89	2,73	4,06	3,34	3,93	3,77	3,47

Driving Licences:

A	Motorcycle > 125 cub.cm	A1	Motorcycle < 125 cub.cm	B	Motor vehicle < 3,5000 kg
C	Motorvehicle > 16,000 kg	C1	Motor vehicle 3,500 – 16,000 kg	EB	Articulated motor vehicle <16,000 kg
		EC	Articulated vehicle > 16,000 kg	EC1	Articulated vehicle 3,500 – 16,000 kg

APPENDIX B-3

June 2021	Number of Professional Driving Permits (PrDP's) Issued per Province									
Category	GA	KZ	WC	EC	FS	MP	NW	LI	NC	RSA
G	1 435	1 501	1 509	627	689	766	378	684	332	7 921
P G	302 648	196 847	160 102	93 276	63 428	109 999	54 315	111 282	26 316	1 118 213
D G	35	16	11	9	18	13	10	20	8	140
D P G	16 924	12 642	4 666	2 662	3 244	4 440	1 371	2 249	806	49 004
Total	321 042	211 006	166 288	96 574	67 379	115 218	56 074	114 235	27 462	1 175 278
June 2022										
Category	GA	KZ	WC	EC	FS	MP	NW	LI	NC	RSA
G	793	1 321	1 391	436	443	618	332	513	296	6 143
P G	255 095	183 679	145 424	74 356	53 422	99 434	54 547	90 461	24 512	980 930
D G	31	10	13	8	16	31	3	26	11	149
D P G	16 519	13 600	4 631	2 380	3 799	5 563	1 619	1 859	835	50 805
Total	272 438	198 610	151 459	77 180	57 680	105 646	56 501	92 859	25 654	1 038 027
% Change										
Category	GA	KZ	WC	EC	FS	MP	NW	LI	NC	RSA
G	-44,74	-11,99	-7,82	-30,46	-35,70	-19,32	-12,17	-25,00	-10,84	-22,45
P G	-15,71	-6,69	-9,17	-20,28	-15,78	-9,60	0,43	-18,71	-6,86	-12,28
D G	-11,43	-37,50	18,18	-11,11	-11,11	138,46	-70,00	30,00	37,50	6,43
D P G	-2,39	7,58	-0,75	-10,59	17,11	25,29	18,09	-17,34	3,60	3,68
Total	-15,14	-5,87	-8,92	-20,08	-14,39	-8,31	0,76	-18,71	-6,58	-11,68

Professional Driving Permits (PrDPs)

G : Goods

P : Passengers

D : Dangerous goods



Road Traffic Management Corporation
Eco Origin Office Park, Block F
349 Witch-Hazel Street
Highveld Ext 79
Tell: 012 999 5200

.....
Want to know more about the RTMC - visit www.rtmc.co.za

