



Road Traffic  
Management Corporation

***State of Road Safety Report: Quarter 4***

***January - March 2022***



**transport**

---

Department:  
Transport  
REPUBLIC OF SOUTH AFRICA

## Table of contents

<b>Table of contents</b>	<b>ii</b>
<b>List of Figures</b>	<b>2</b>
<b>List of acronyms and abbreviations</b>	<b>4</b>
1. OBJECTIVE OF THE REPORT	5
2. EXECUTIVE SUMMARY	6
SECTION A	8
1. INTRODUCTION	8
2. METHODOLOGY	8
3. FATAL ROAD CRASH ANALYSIS	10
4. ROAD FATALITIES ANALYSIS	19
5. MAJOR CRASHES	27
SECTION B	33
1. INTRODUCTION	33
2. VEHICLE POPULATION	33
<b>APPENDIX A</b>	<b>48</b>
<b>APPENDIX B-1</b>	<b>49</b>
<b>APPENDIX B-2</b>	<b>50</b>
<b>APPENDIX B-3</b>	<b>51</b>

## List of Tables

Table 1: Number of fatal crashes per province .....	10
Table 2: Percentage distribution of Fatal Crashes per day of week.....	11
Table 3: Comparison of fatalities per province for the two quarters .....	19
Table 4: Number of major crashes, fatalities, and injuries per province .....	28
Table 5: Number of registered vehicles per type.....	33
Table 6: Number of registered vehicles per province .....	35
Table 7: Number of learner licences issued.....	37
Table 8: Number of learners licences issued per province .....	38
Table 9: Number of driving licences issued .....	39
Table 10: Number and percentage of driving licences issued per category .....	41
Table 11: Number of driving licences issued per province .....	41
Table 12: Number of driving licences cards issued and expired per province .....	42
Table 13: Number of PrDP's issued .....	43
Table 14: Number of professional driving permits (PrDP's) issued per province .....	44
Table 15: Number of professional driving permits (PrDP's) issued and expired per province .....	45

## List of Figures

Figure 1: Percentage distribution of fatal crashes for the two quarters .....	11
Figure 2: Percentage distribution of fatal crashes per day of week.....	12
Figure 3: Percentage distribution of fatal crashes per time of day.....	12
Figure 4: Percentage distribution of fatal crashes per crash type.....	13
Figure 5: Percentage distribution of fatal crashes per vehicle type.....	14
Figure 6: Comparison of contributory factors .....	15
Figure 7: Percentage distribution of human factors .....	16
Figure 8: Percentage distribution of road and environmental factors.....	17
Figure 9: Percentage distribution for vehicle factor .....	18
Figure 10: Percentage distribution of fatalities per province .....	20
Figure 11: Percentage distribution of fatalities per road user .....	21
Figure 12: Percentage distribution of fatalities per gender.....	22
Figure 13: Percentage distribution of fatalities per race .....	23
Figure 14: Percentage distribution of fatalities per age for drivers .....	24
Figure 15: Percentage distribution of fatalities per age for passenger.....	25
Figure 16: Percentage distribution of fatalities per age for pedestrians.....	26
Figure 17: Percentage distribution of fatalities per age for cyclists.....	26
Figure 18: Number of major crashes, fatalities, and injuries.....	27
Figure 19: Number of major crashes, fatalities, and injuries per province .....	29
Figure 20: Percentage distribution of fatal crashes per day of week.....	29
Figure 21: Crash types for major crashes.....	30
Figure 22: Vehicles involved in major crashes.....	31
Figure 23: Contributory factors .....	32
Figure 24: Percentage Annual Growth in Vehicles .....	34

Figure 25: Percentage Annual Growth in Vehicle Population .....	35
Figure 26: Percentage Vehicles Registered per Province .....	36
Figure 27: Number of learner licenses issues .....	37
Figure 28: Percentage change in learner licenses issued per province .....	39
Figure 29: Number of driving licenses issued .....	40
Figure 30: Percentage change in driving licenses issued .....	41
Figure 31: Percentage expired driving license cards .....	42
Figure 32: Number of PrDP's issued .....	43
Figure 33: Percentage in PrDP's issued .....	44
Figure 34: Percentage expired professional driving permits .....	45

## List of acronyms and abbreviations

CHOCOR	:	CULPABLE HOMICIDE CRIME: OBSERVATION REPORT
EC	:	EASTERN CAPE
GA	:	GAUTENG
FS	:	FREE STATE
LI	:	LIMPOPO
MP	:	MPUMALANGA
NC	:	NORTHERN CAPE
NW	:	NORTH WEST
WC	:	WESTERN CAPE
KZN	:	KWAZULU NATAL
SAPS	:	SOUTH AFRICAN POLICE SERVICE
NATIS	:	ELECTRONIC NATIONAL TRAFFIC INFORMATION SYSTEM

## **1. OBJECTIVE OF THE REPORT**

This report aims at achieving the following objectives:

- To provide road traffic fatal crashes and fatalities statistics based on the Culpable Homicide Crash: Observation Report (CHoCOR) Forms and provincial inputs; and
- To present statistics on registered vehicles, un-roadworthy vehicles, un-licenced vehicles, driving licence and professional driving permits issued.

## **2. EXECUTIVE SUMMARY**

The purpose of the report is to provide final road crash statistics for the period January to March 2022. The performance is as provided below.

### ***Road Crashes Data***

A total number of 2 855 fatalities were recorded for the period January – March 2022 from 2 373 fatal crashes. An increase of 10% has been recorded for fatal crashes and 12% increase for fatalities.

A total number of twenty-eight (28) major crashes were reported and investigated for the period under review. One-hundred and eighty-seven (187) people were killed, and one hundred and thirty-six (136) victims sustained injuries from the major crashes. In total, all the above amount to three hundred and twenty-three casualties.

### ***Vehicle and driver population***

The number of registered vehicles increased by 286 210 (2,25%) from 12 747 784 on 31 March 2021 to 13 033 994 vehicles as on the 31 March 2022.

The number of learner driving licences issued increased by 177 115 (19,14%) from 925 170 on 31 March 2021 to 1 102 285 on 31 March 2022.



The number of driving licences issued increased by 503 261 (3,59%) from 14 035 426 on 31 March 2021 to 14 538 687 as of 31 March 2022.

The number of Professional Driving Permits (PrDP's) issued decreased by 262 296 (21,93%) from 1 196 190 on 31 March 2021 to 933 894 on 31 March 2022.

## **SECTION A**

### **1. INTRODUCTION**

This report is based on information about fatal crashes that were reported to police stations between January and March of 2021 and 2022 using the CHoCOR Forms and input from provinces. In addition, the report includes information about registered vehicles, learner driving licence, driving licence and professional driving permits issued from the National Traffic Information System (NaTIS).

### **2. METHODOLOGY**

#### **2.1 Road crash data collection methodology**

The Culpable Homicide Crash Observation Report (CHoCOR) form is used to collect fatal road crash data on daily basis. South African Police Service (SAPS) is the primary source of the fatal crash data. SAPS provide the Corporation with a list of all recorded fatal crashes (CAS list) and further to this, the Corporation receive the CHoCOR forms from various police stations and takes input from provinces. Road Traffic Management Corporation captures, processes, and verifies the data to compile a report.

## **2.2 Crash Data Flow**

The data is collected through the CHoCOR forms which are submitted to the Corporation either by fax, email or through the phone. Input is also given by provinces on fatal crashes and fatalities.

## **2.3 Data processing**

The data is captured, verified and the consolidated statistics are compiled. There is a continuous engagement with provinces for validation purpose.

## **2.4 Limitations**

The road traffic information contained in the report is based on the fatal crashes only. There is still a need for in-depth research to be conducted to collect scientific base facts to complement the administrative data.

### 3. FATAL ROAD CRASH ANALYSIS

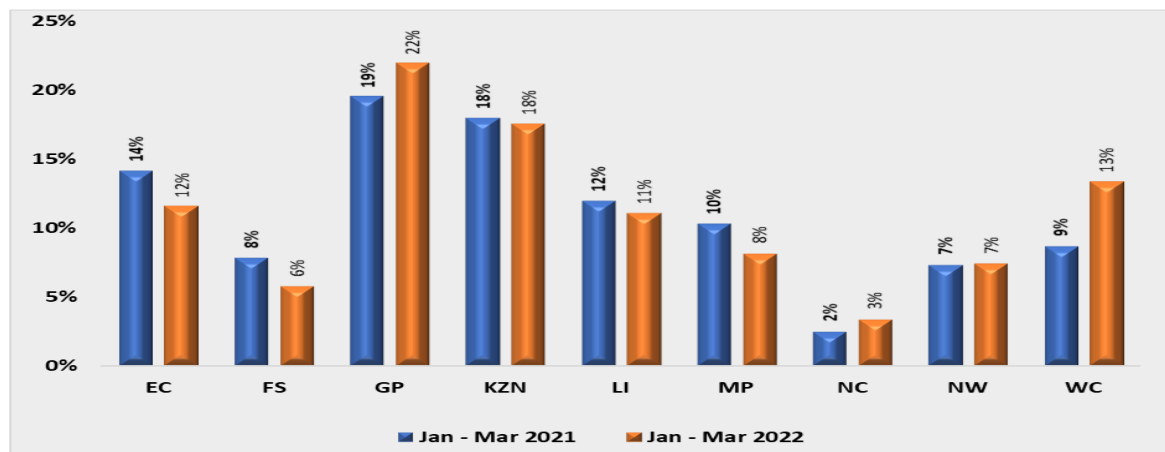
The section covers the data in relation to fatal road crashes, which encompasses the number of fatal crashes and fatalities, contributory factors, fatality information per road user group and major crashes.

#### 3.1 Number of fatal crashes

The table below provides a comparison between the fourth quarter of financial year 2020/21 and fourth quarter of financial year 2021/22. An increase of 218 (10%) has been recorded for the periods under review. With exception of Eastern Cape, Free State and Mpumalanga the other provinces recorded an increase in fatal crashes. The highest percentage increases are Northern Cape at 38%, North West at 22% and Gauteng at 21%.

Number of Fatal Crashes per Province										
Quarter 4	EC	FS	GP	KZN	LI	MP	NC	NW	WC	RSA
Jan - Mar 2021	283	143	428	390	227	199	58	143	284	<b>2 155</b>
Jan - Mar 2022	274	136	520	416	262	193	80	175	317	<b>2 373</b>
Change	-9	-7	92	26	35	-6	22	32	33	<b>218</b>
% Change	-3	-5	21	7	15	-3	38	22	12	<b>10</b>

**Table 1: Number of fatal crashes per province**



**Figure 1: Percentage distribution of fatal crashes for the two quarters**

The Figure above indicates the percentage distribution per province of fatal crashes for the two quarters. The highest contributors to fatal crashes during quarter four of financial year 2021/22 in percentage are Gauteng at 22%, Kwa-Zulu Natal at 18%, Western Cape at 13% and Eastern Cape at 12%.

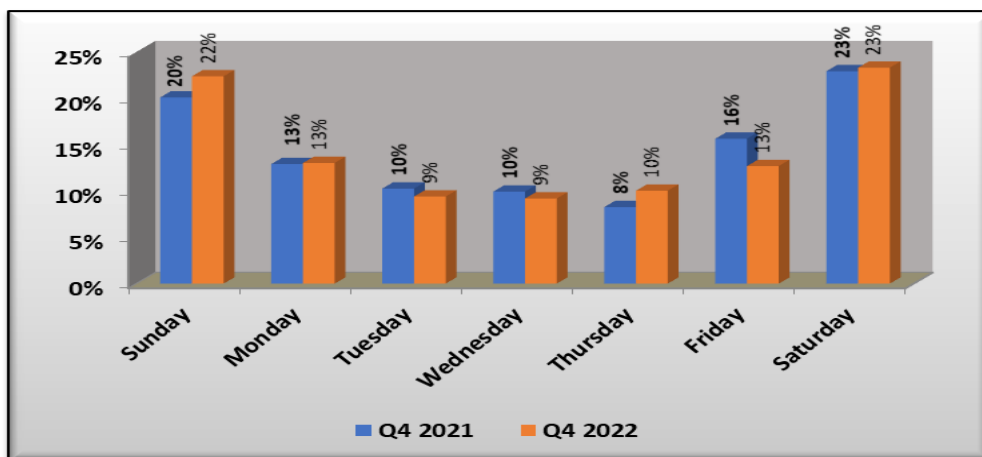
### 3.1.1 Fatal Crashes per Day of Week

The details of the fatal crashes per day of the week is given in the table below. Friday, Saturday, and Sunday are the days of the week with most fatal crashes recorded compared to other days. About 59% of fatal crashes were recorded for the three days for 2021 whilst about 58% were recorded for the same days in 2022.

Quarter 4	Sun	Mon	Tue	Wed	Thurs	Fri	Sat	Total
Jan - Mar 2021	20%	13%	10%	10%	8%	16%	23%	100%
Jan - Mar 2022	22%	13%	9%	9%	10%	13%	23%	100%

**Table 2: Percentage distribution of Fatal Crashes per day of week**

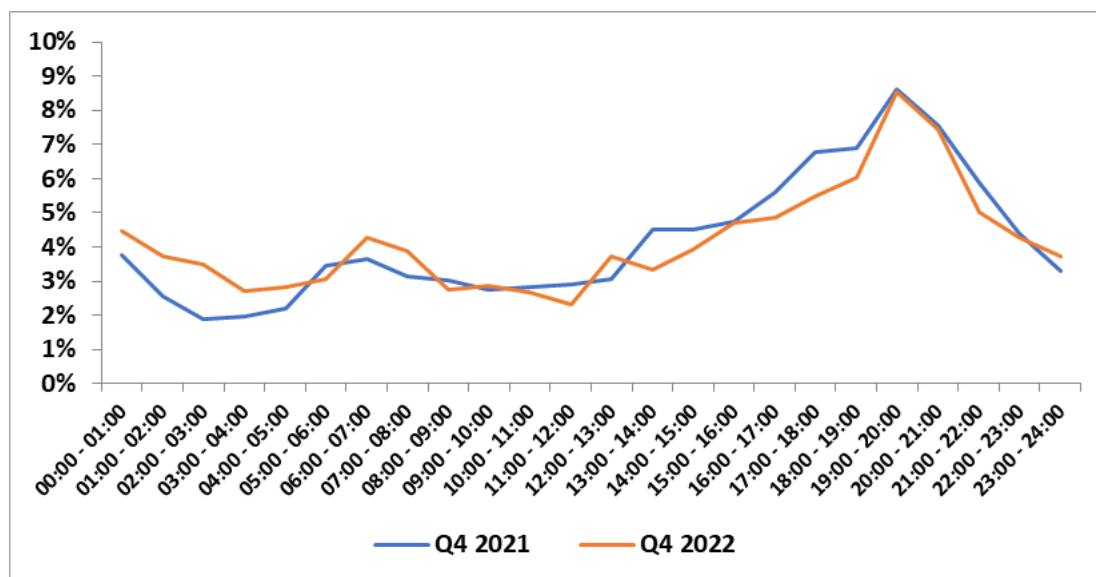
The percentage of fatal crashes per day of the week for the period under review is reflected in the figure below.



**Figure 2: Percentage distribution of fatal crashes per day of week**

### 3.1.2 Fatal Crashes per time of day

The percentage of fatal crashes per time of day for the period under review is reflected in the figure below.



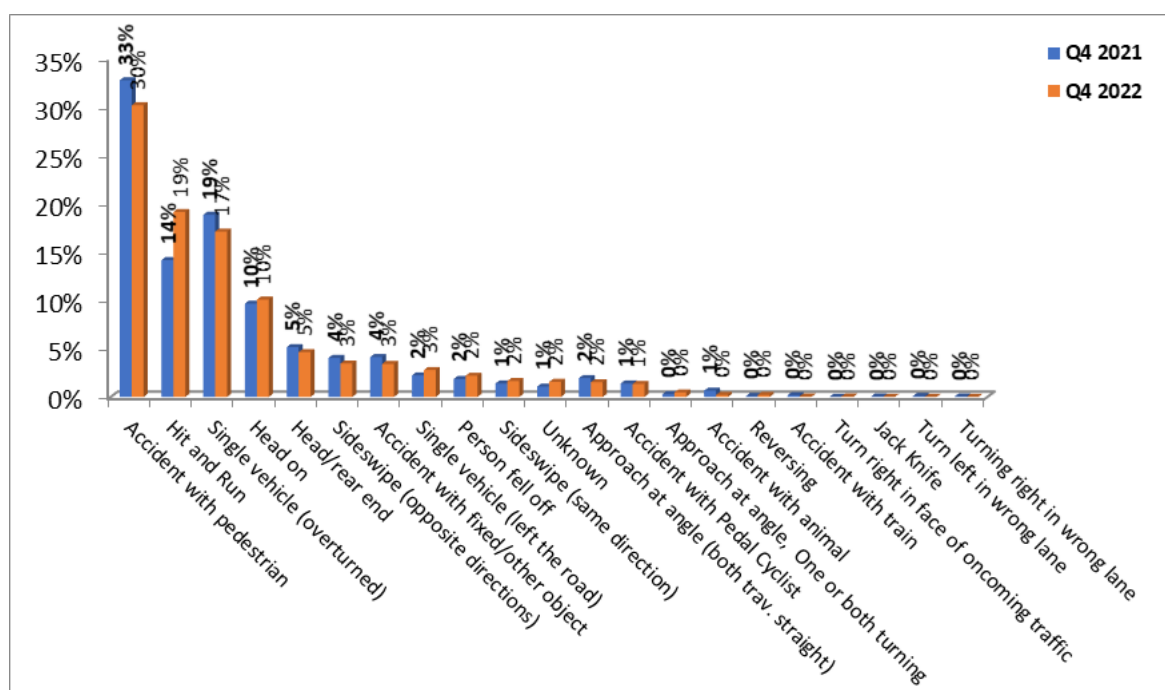
**Figure 3: Percentage distribution of fatal crashes per time of day**

The figure above depicts a comparison between fatal crashes per time of day comparing quarter 4 of 2021 and 2022. From the above figure crashes started peaking from 13h00 until 22:00. The highest pick being between 19:00 to

20:00 time slot with 9% contribution in 2021 and 2022; this is followed by the time period between 20:00 to 21:00 time slot with 8% and 7% for 2021 and 2022.

### 3.1.3 Fatal crashes per crash type

The percentage contribution of fatal crashes per crash type is reflected in the figure below.



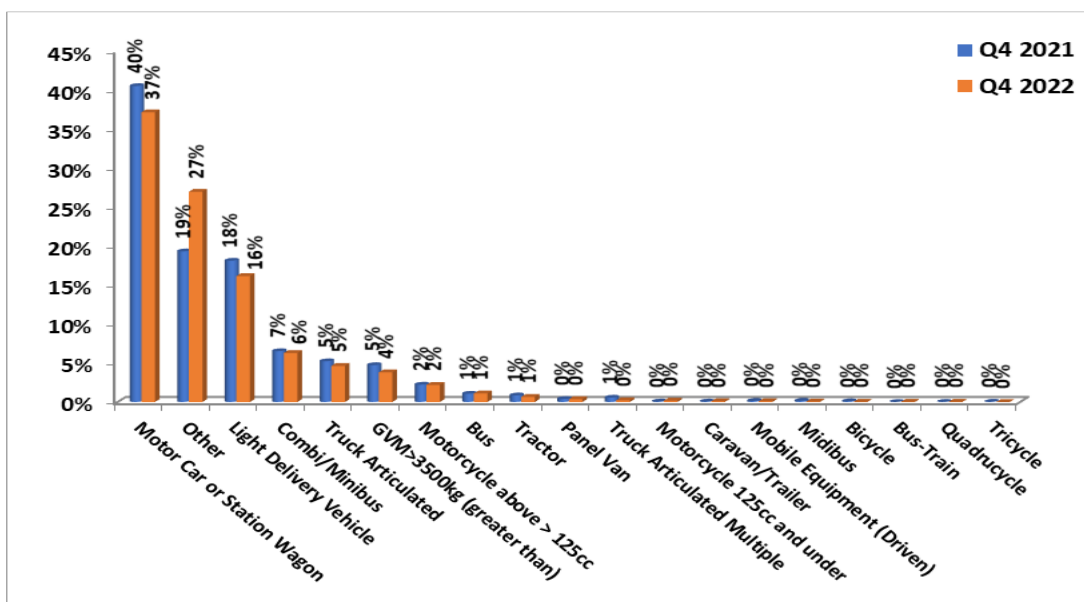
**Figure 4: Percentage distribution of fatal crashes per crash type**

The figure above show that the top three crash types are with pedestrians at 30%, Hit and Run at 19% and single vehicle overturned at 17% in quarter four 2021/22

financial year. Hit and runs and accident with pedestrians accounted for 49% of crash types in that period.

### 3.1.4 Fatal crashes per vehicle type

The percentage contribution of various vehicles involved in the fatal crashes are reflected in the figure below.



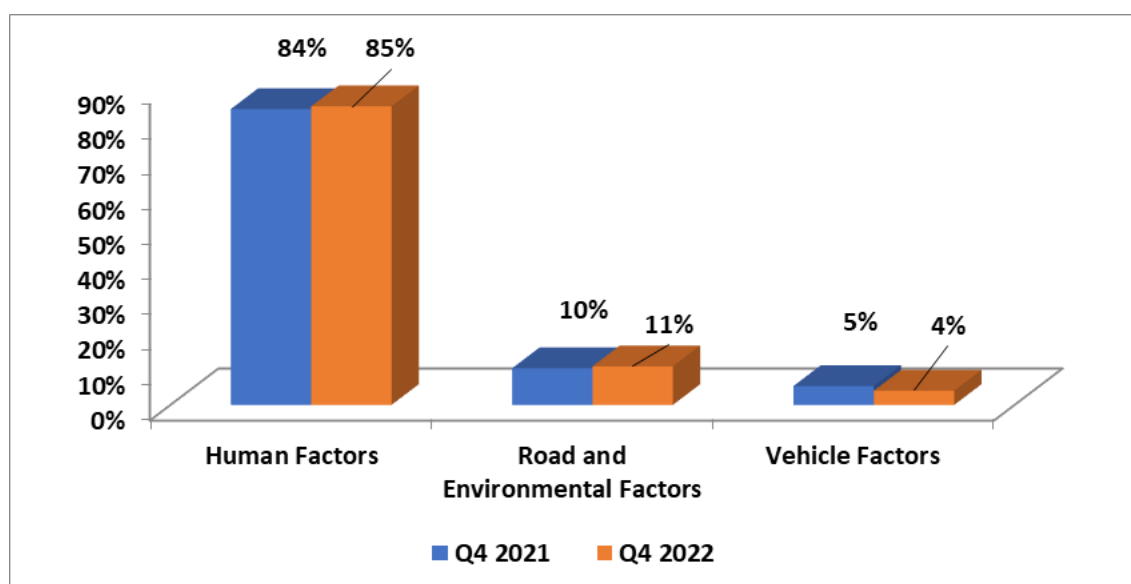
**Figure 5: Percentage distribution of fatal crashes per vehicle type**

The vehicle types that are mostly involved in fatal crashes are the motorcars and light delivery vehicles. However, a slight reduction has been recorded for both compared to the previous year. A reduction of 3% has been observed for motorcars and 2% for light delivery vehicles.



### 3.2 Contributory factors

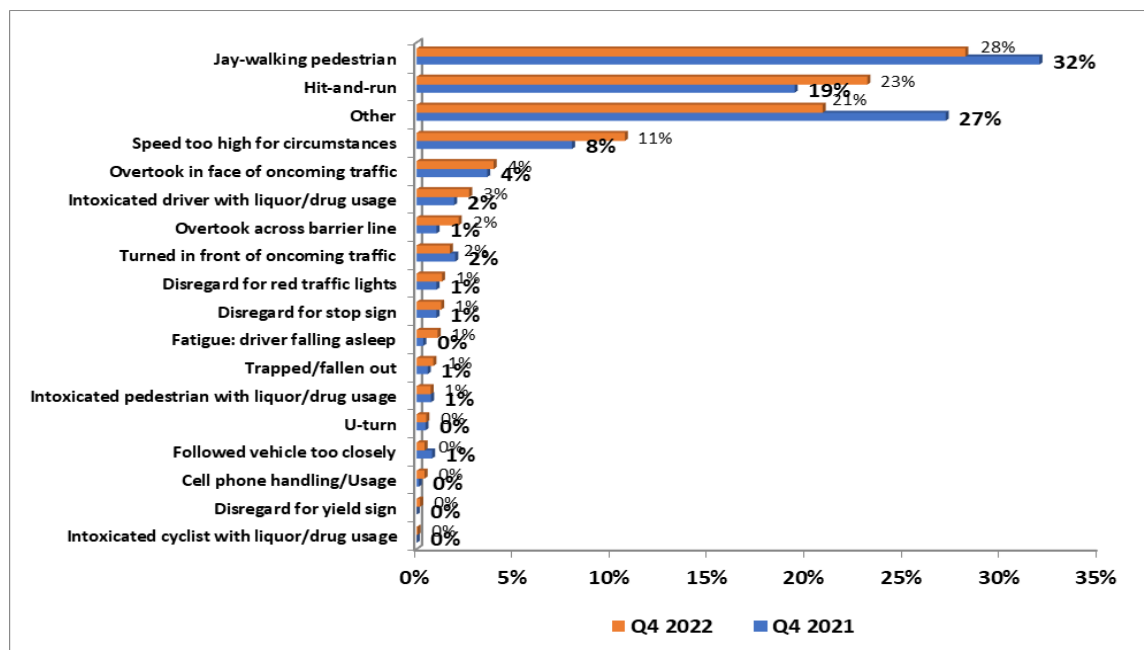
The contributory factors for fatal road crashes are determined as follows: human factors (defined as a stable, general human abilities and limitations that are valid for all users regardless); vehicle factors (are more focussed on the vehicle itself and they cover issues around mechanical failures; and environment (include limited visibility, poorly marked roads, missing road signs, sudden changes in road infrastructure, gravel road, the state of the road and weather conditions).



**Figure 6: Comparison of contributory factors**

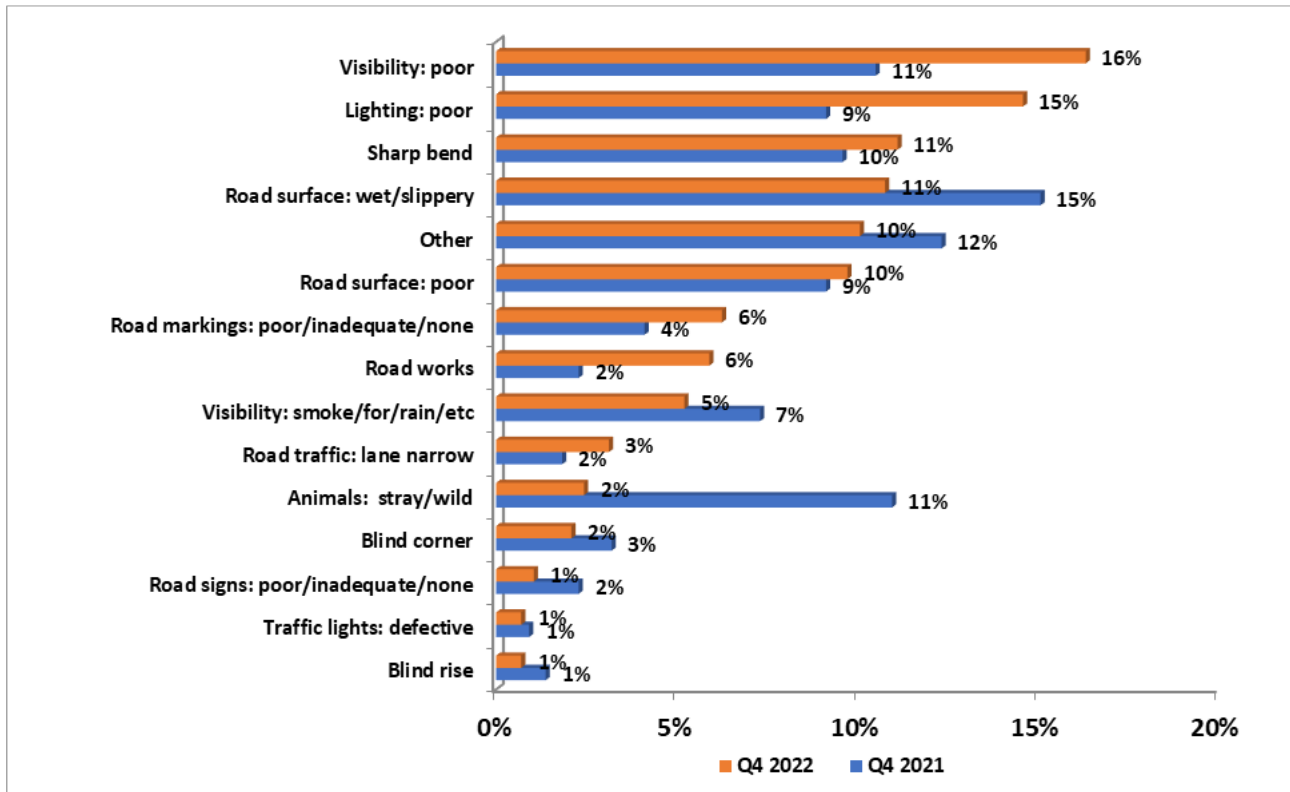
The figure above shows that most fatal crashes do occur due to human factors. In 2020/21 human factors contributed 84% to fatal crashes and 85% in 2021/22. The roads and environmental factors contribute 10% to fatal crashes

in 2020/21 and 11% in 2021/22. Vehicle factors contribute 5% to fatal crashes in 2020/21 and 4% in 2021/22.



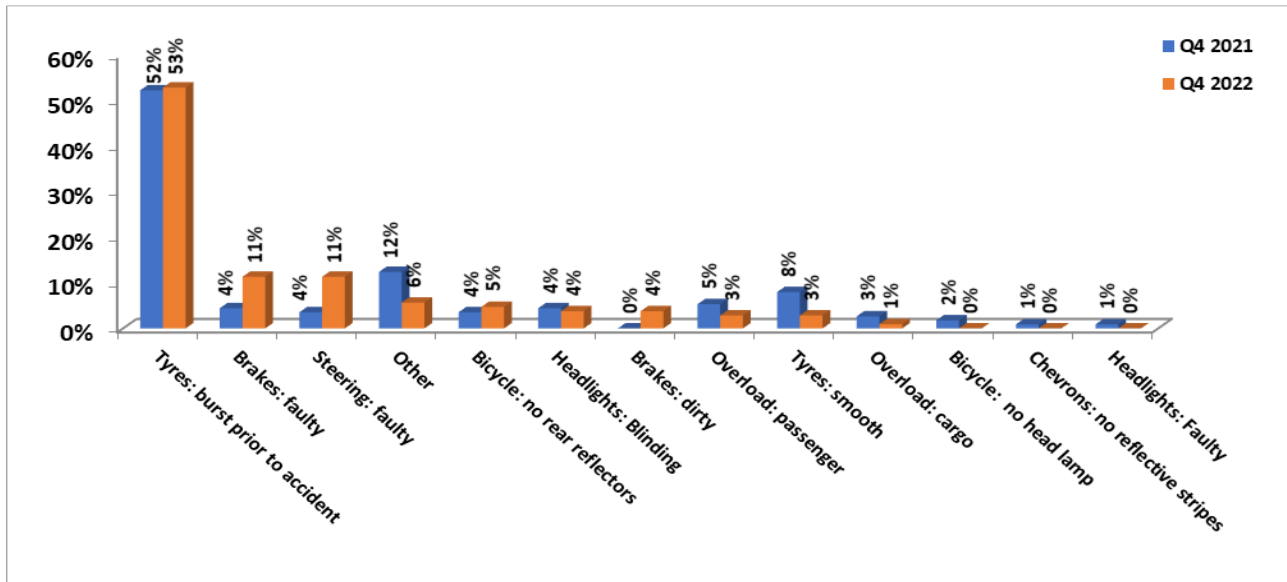
**Figure 7: Percentage distribution of human factors**

A reduction of 4% was recorded for Jay-walking from 32% in 2020/21 to 28% in 2021/22. Hit-and-run increased by 4% from 19% in 2020/21 to 23% in 2021/2. Speed went up by 3% from 8% to 11%.



**Figure 8: Percentage distribution of road and environmental factors**

The figure above depicts the top five (5) factors in this category to be poor visibility, poor lighting, sharp bend, road surface being wet and road surface being poor. An increase of 5% has been recorded for poor visibility from 11% in 2020/21 to 16% recorded in 2021/22, and an increase of 6% from 9% in 2020/21 to 15% in 2021/22 for poor lighting.



**Figure 9: Percentage distribution for vehicle factor**

The figure above shows that within the vehicle factors most crashes occurred due to tyre burst prior to the crash which contributes of 52% during 2020/21 and 53% in 2021/22 within this category. In 2021/22 there has been an increase of 7% for brakes being faulty and steering being faulty.

## 4. ROAD FATALITIES ANALYSIS

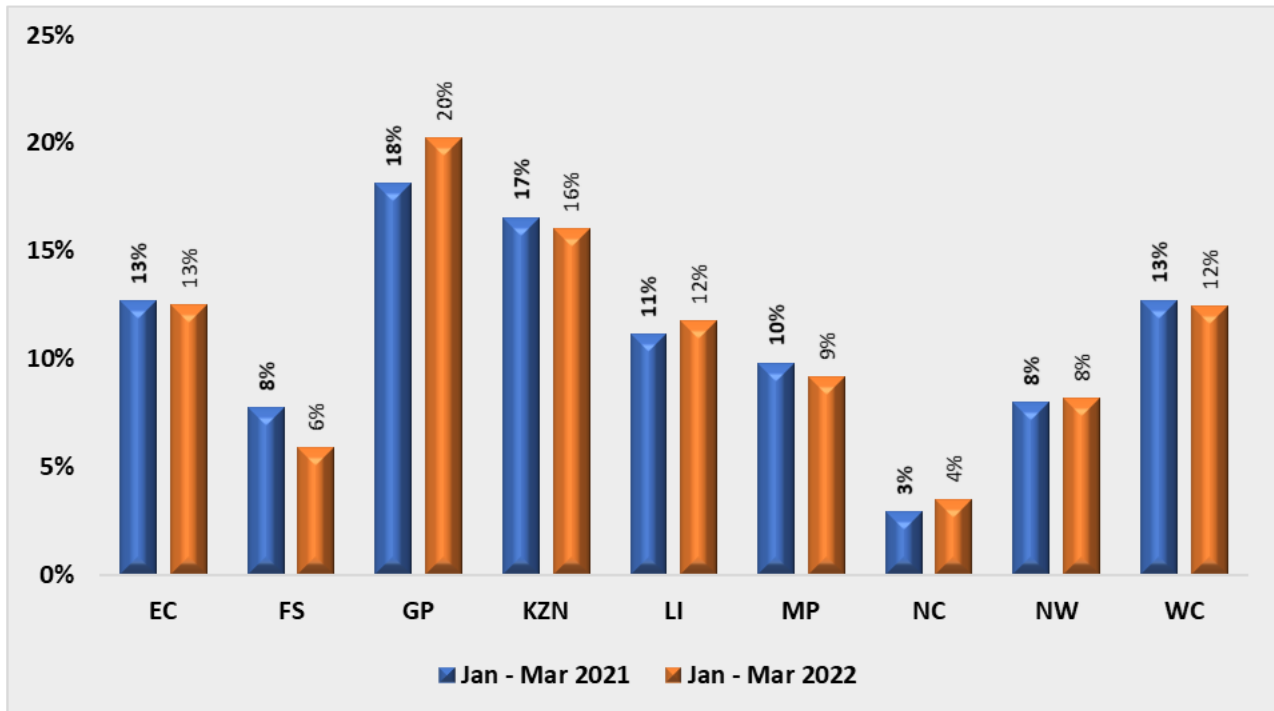
The section covers the data in relation to road fatalities. Fatalities are defined as when a person or persons are killed during or immediately after a crash, or death within 30 days after a crash happened as a direct result on such crash. This section will encompass the number of fatalities and percentage distribution per road user group, gender, race and per age.

### 4.1 Number of fatalities per province

Number of Fatalities per Province										
Quarter 4	EC	FS	GP	KZN	LI	MP	NC	NW	WC	RSA
Jan - Mar 2021	324	198	463	423	285	251	76	205	325	2 550
Jan - Mar 2022	358	169	578	459	337	263	100	235	356	2 855
Change	34	-29	115	36	52	12	24	30	31	305
% Change	10	-15	25	9	18	5	32	15	10	12

**Table 3: Comparison of fatalities per province for the two quarters**

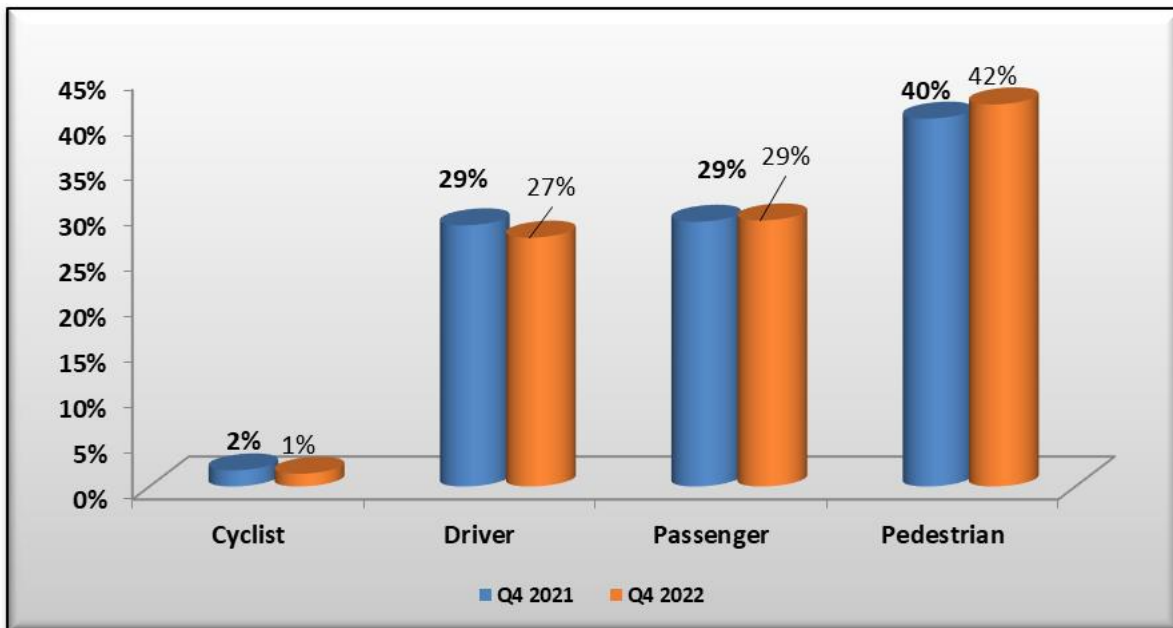
The table above shows a comparison of fatalities per province for the two quarters. An increase of 12% has been recorded for fatalities from 2 550 in 2021 to 2 855 in 2022. Apart from Free State, all provinces recorded an increase during the period under review. The highest percentage change is in Northern Cape with 32% followed by Gauteng with a contribution of 25%.



**Figure 10: Percentage distribution of fatalities per province**

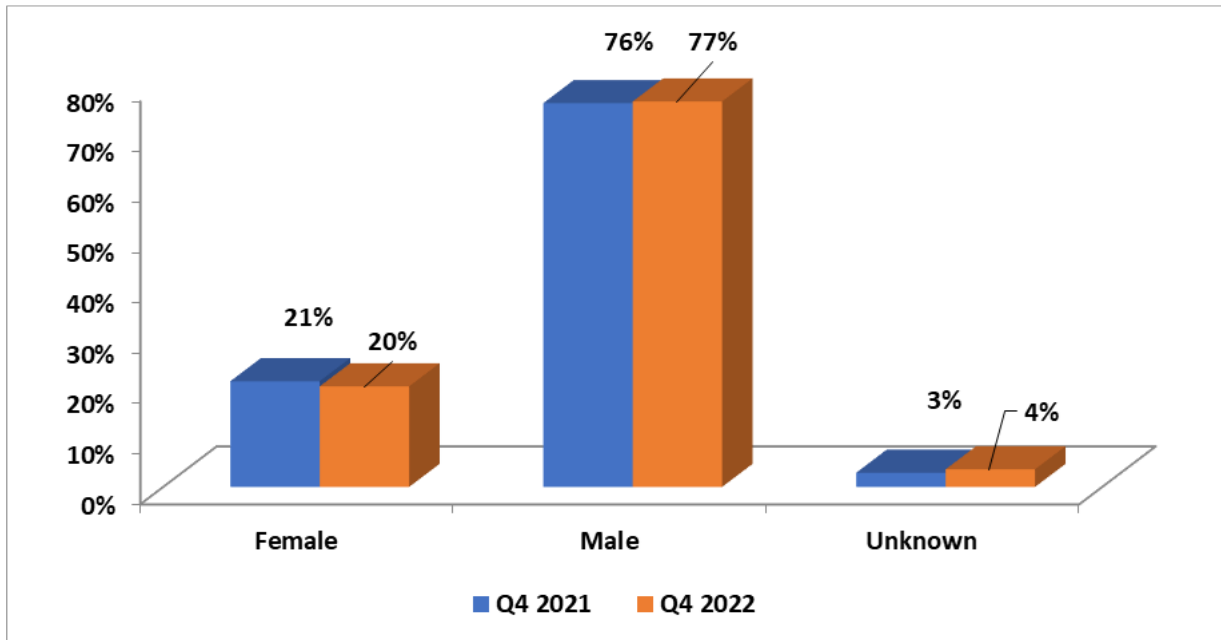
The Figure above indicates the percentage distribution per province of fatal crashes for the two quarters. The highest contributors to fatal crashes during quarter four of financial year 2021/22 in percentage are Gauteng at 20%, Kwa-Zulu Natal at 16%, Eastern Cape at 13% and Western Cape at 12%.

## 4.2 Number of Fatalities per Road User Group



**Figure 11: Percentage distribution of fatalities per road user**

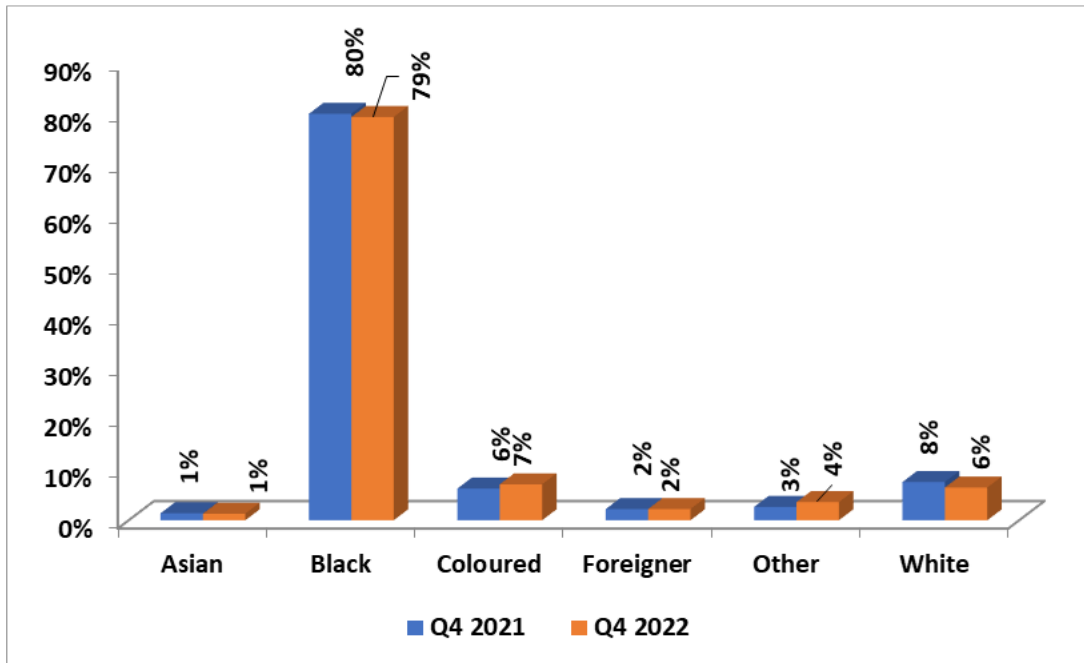
The percentage distributions of fatalities for various road user groups are reflected in the figure above. Pedestrians make up to 40% of road fatalities year on year. Drivers and passengers make up 29% of fatalities each.



**Figure 12: Percentage distribution of fatalities per gender**

The figure above depicts trends for fatalities per gender for the two quarters. Males make up a three quarters of road fatalities.



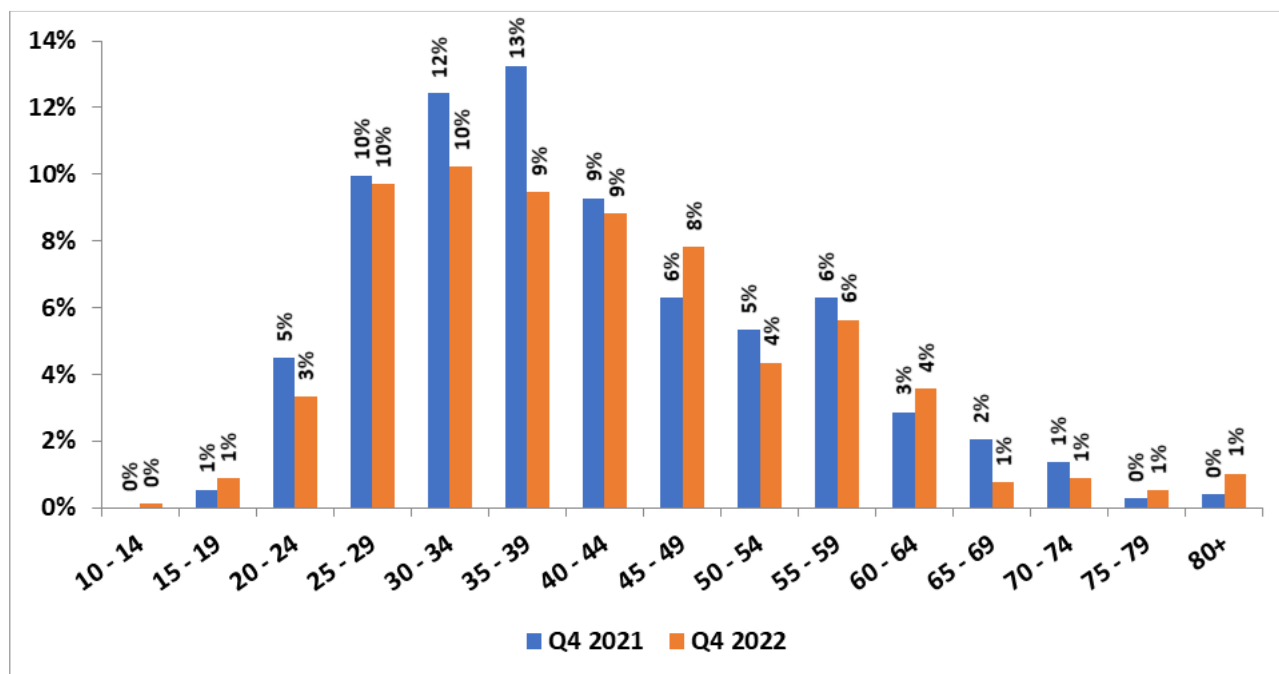


**Figure 13: Percentage distribution of fatalities per race**

The figure above depicts trends for fatalities per race for the two quarters. Black are the most race that gets killed on road crashes.

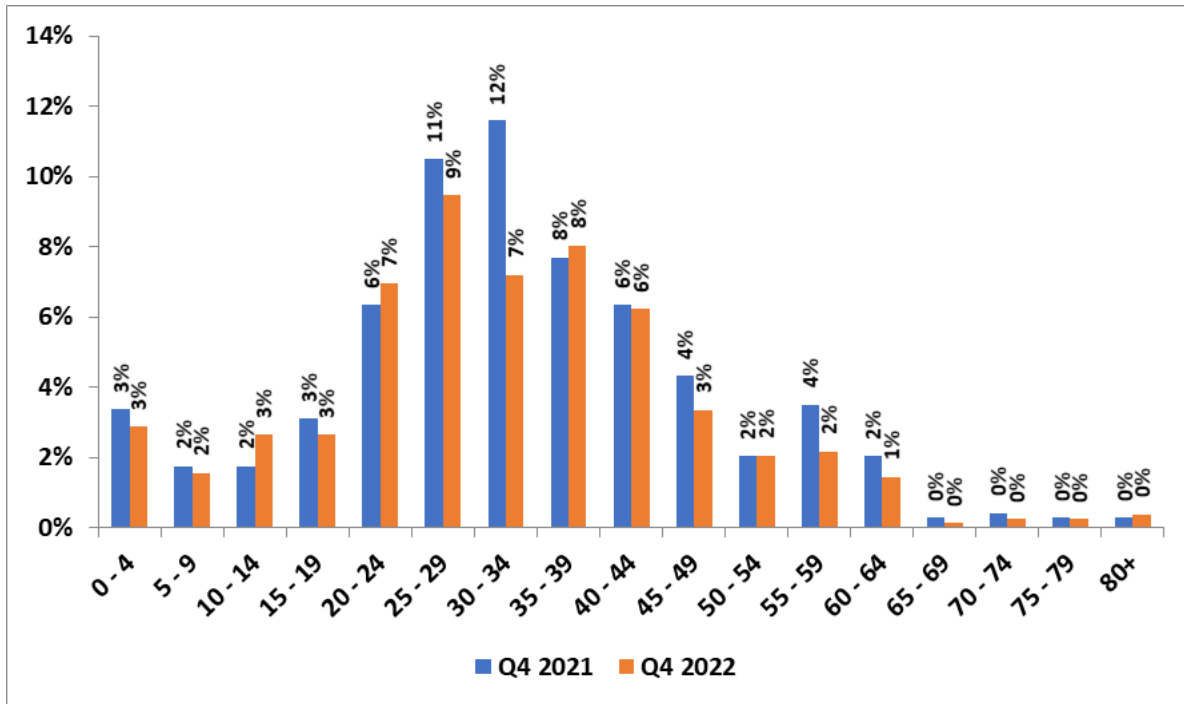
### 4.3 Road user group fatalities per age group

The figures below provide information regarding the fatalities per age and per road user group for the period January to March 2021 and 2022.



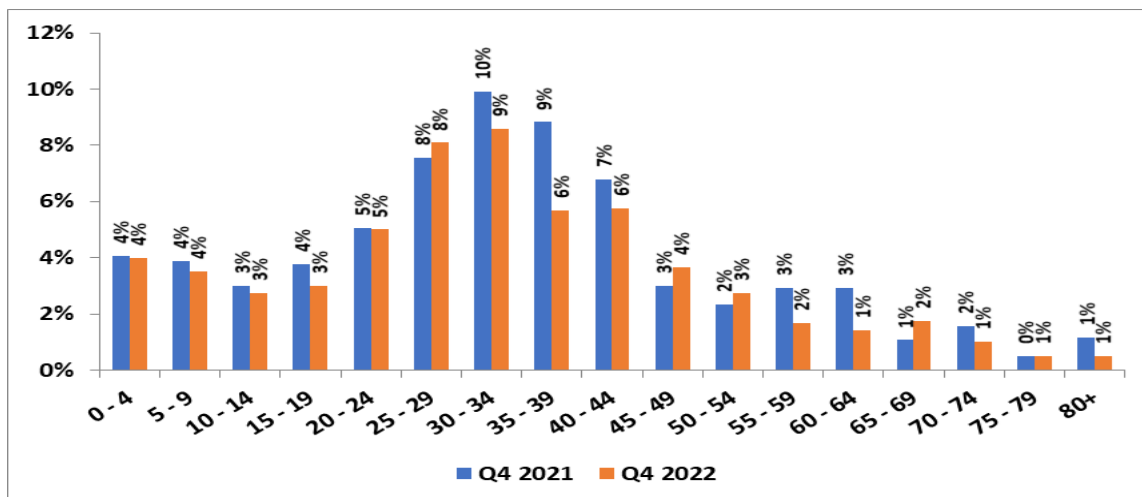
**Figure 14: Percentage distribution of fatalities per age for drivers**

The figure above shows 44% of driver fatalities were between the ages of 25 and 44 in 2020/21 and 38% in 2021/22, with 35 to 39 year old at 13% in 2020/21.



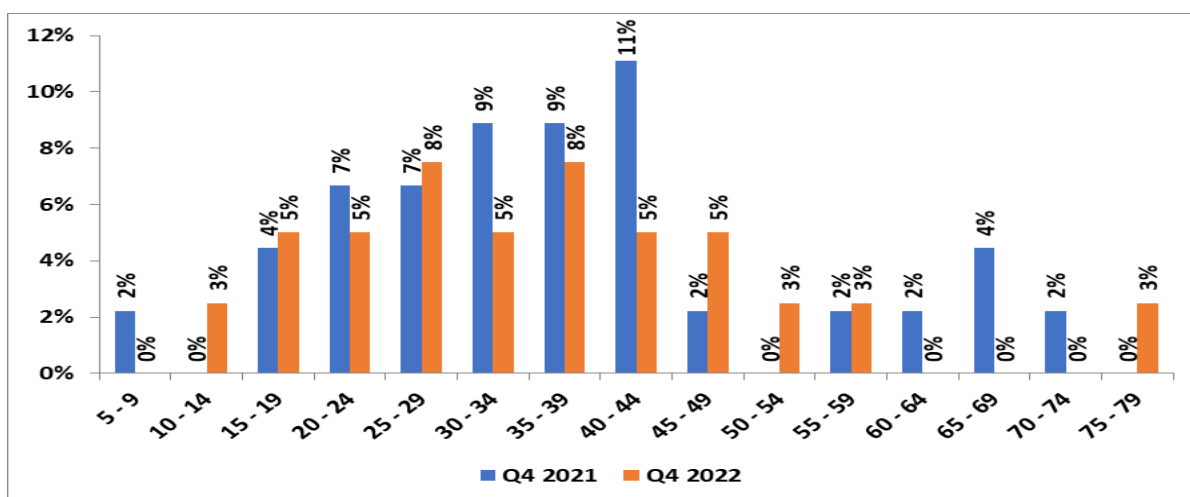
**Figure 15: Percentage distribution of fatalities per age for passenger**

The figure above shows 43% of passenger fatalities were between the ages of 20 and 44 in 2020/21 and 37% in 2021/22, with 25 to 29 year old at 11% and 30 to 34 at 12% in 2020/21.



**Figure 16: Percentage distribution of fatalities per age for pedestrians**

The figure above indicates that most fatalities for pedestrians were recorded between the age group 30 to 34 years for 2020/21 and 2021/22.



**Figure 17: Percentage distribution of fatalities per age for cyclists**

The figure above indicates that in 2020/21 most cyclist fatalities were recorded between age group 40 to 44. In 2021/22 the highest contribution was between the age group 25 to 29 and 35 to 39 years at 8% each.

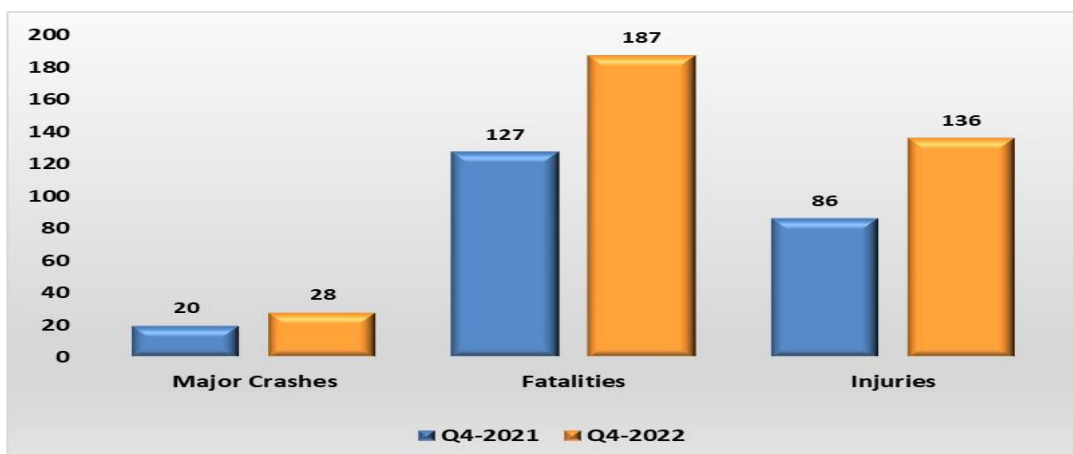
## 5. MAJOR CRASHES

This section provides for all the major crashes for the period under review. Major crashes are defined as Crashes where five (5) or more people died, crashes involving vehicles carrying dangerous goods / hazardous chemicals where there is a fatality and a spillage of the dangerous goods / hazardous chemicals, high profile person and any crash that the Corporation deems necessary to investigate.

### 5.1 Number of major crashes

A total number of twenty-eight (28) major crashes were reported and investigated for the period under review. One-hundred and eighty-seven (187) people were killed, and one hundred and thirty-six (136) victims sustained injuries from the major crashes. In total, all the above amount to three hundred and twenty-three casualties.

The figure below indicates the number of fatalities and injuries sustained during the period under review compared to the previous period. Similarly, the fatalities and injuries increased drastically.



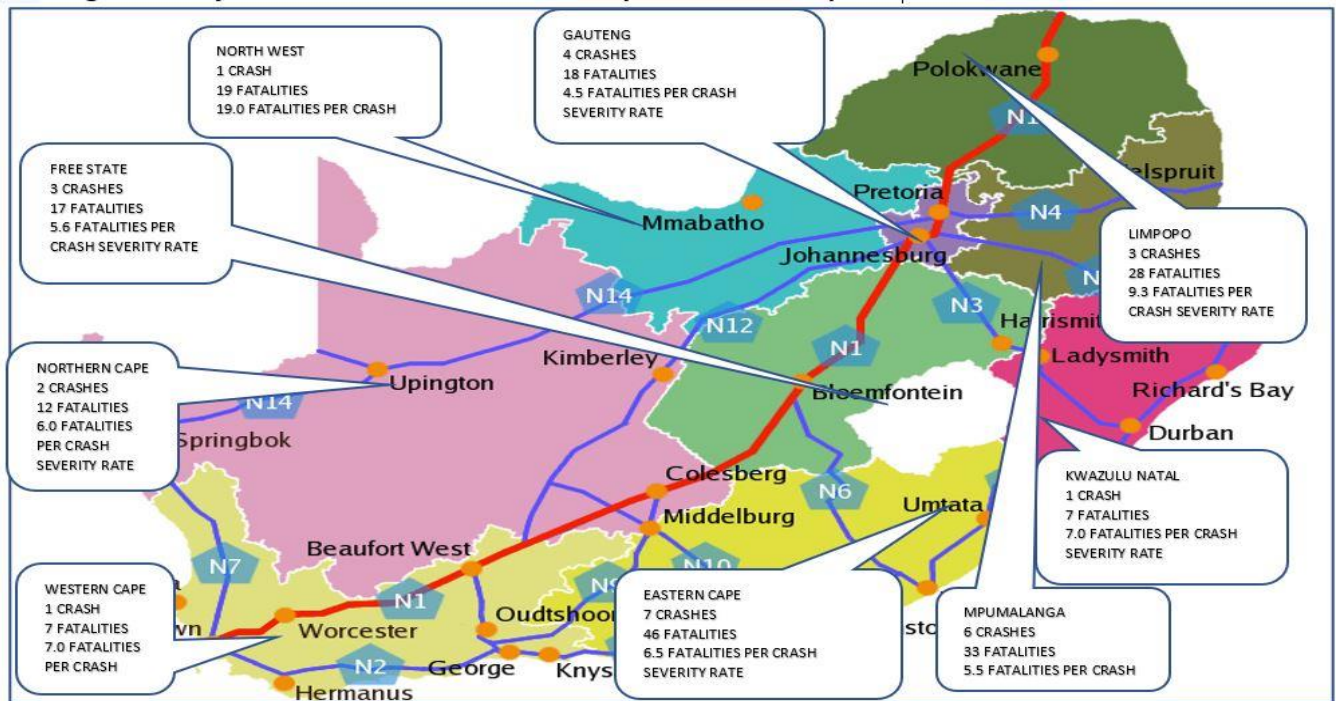
**Figure 18: Number of major crashes, fatalities, and injuries**

The number of crashes and casualties for the 4<sup>th</sup> Quarter 2021/2022 compared to the 4<sup>th</sup> Quarter of 2020/2021 indicated an increase of 8 crashes or 40% in the number of crashes, and an increase of 47.24% in the number of fatalities.

Province	4 <sup>th</sup> Quarter of 2021/2022		4 <sup>th</sup> Quarter of 2021/2022	
	Crashes	Fatalities	Crashes	Fatalities
Eastern Cape	4	25	7	46
Free State	5	36	3	17
Gauteng	-	-	4	18
KwaZulu-Natal	1	4	1	7
Limpopo	3	17	3	28
Mpumalanga	1	5	6	33
Northern Cape	2	11	2	12
North West	3	21	1	19
Western Cape	1	8	1	7
<b>Total</b>	<b>20</b>	<b>127</b>	<b>28</b>	<b>187</b>

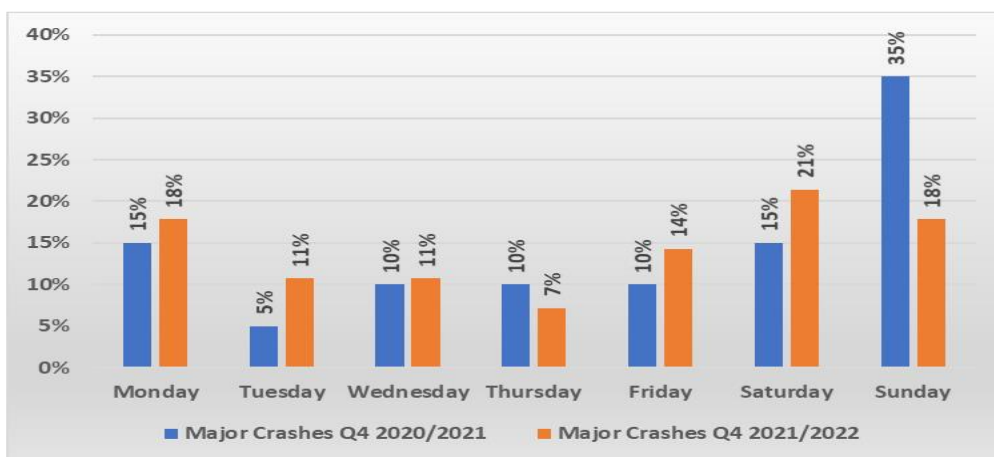
**Table 4: Number of major crashes and fatalities per province**

With regards to the provincial share, most major crashes for 2021/22 were recorded in Eastern Cape and Mpumalanga with 7 and 6 respectively. Similarly, most fatalities have been recorded for the same provinces with 46 and 33.



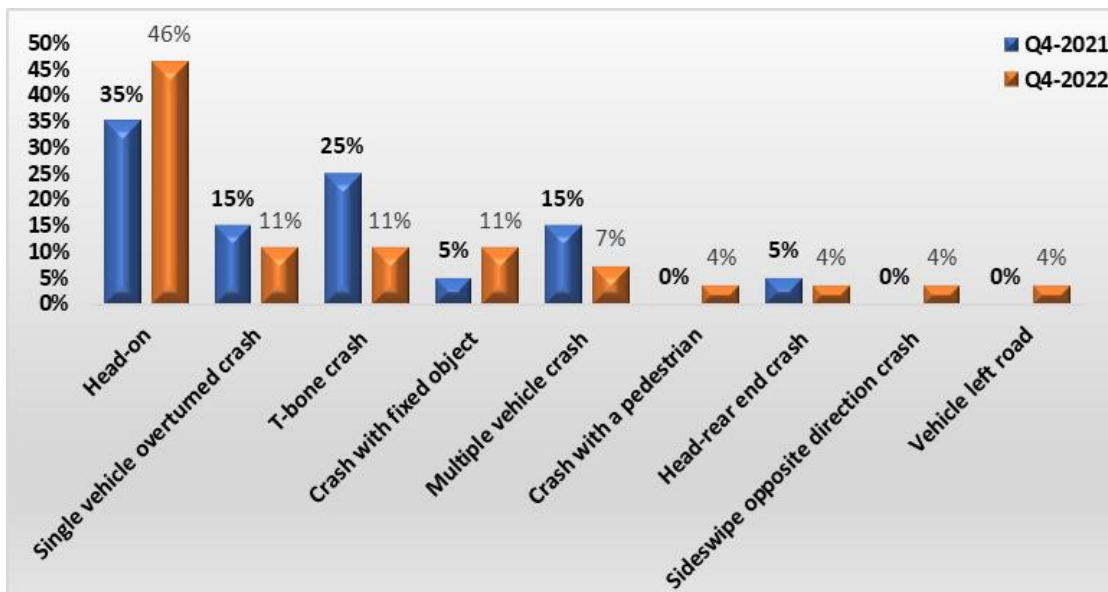
**Figure 19: Number of major crashes, fatalities, and injuries per province**

The table below indicates the major crashes as they were recorded per day during the 4<sup>th</sup> Quarter of 2020/2021 and the 4<sup>th</sup> Quarter of 2021/2022. Most of the major crashes occurred over weekends. About 53% has been recorded for weekend from Friday to Sunday, whilst about 47% has been recorded from Monday – Thursday.



**Figure 20: Percentage distribution of fatal crashes per day of week**

## 5.2 Crash Types



**Figure 21: Crash types for major crashes**

The figure above depicts the major crash types that occurred during the 4<sup>th</sup> quarters of 2020/21 and 2021/22.

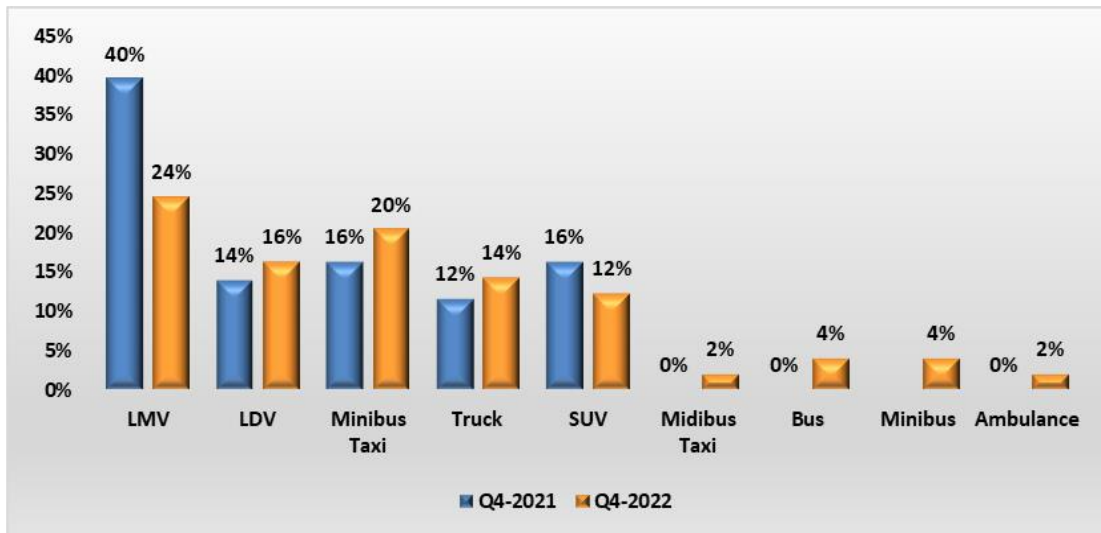
Most of crash types investigated for 2020/21 and 2021/22 were as follows:

- Head-On crash with 35% in 2020/21 and 46% in 2021/22;
- Single Vehicle overturned 15% in 2020/21 and 11% in 2021/22 and
- T-bone with 25% in 2020/21 and 11% in 2021/22.

Head-on collisions had the highest percentage of major crashes.



### 5.3 Vehicles Involved in Major Crashes



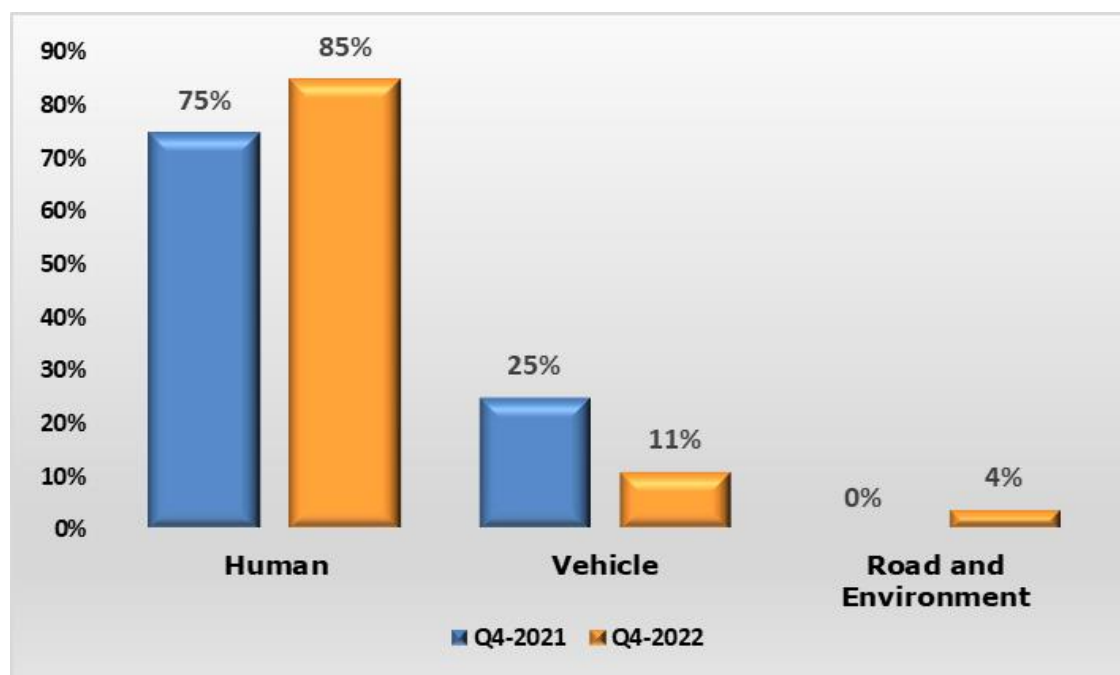
**Figure 22: Vehicles involved in major crashes**

Most major crashes involved LMVs and LDVs.

The following is the breakdown vehicle types:

- Light Motor Vehicles (LMV's) – 40% in 2021 and 24% in 2022
- Light Delivery Vehicles (LDV's) – 14% in 2021 and 16% in 2022
- Minibus Taxi – 16% in 2021 and 20% in 2022
- Trucks – 12% in 2021 and 14% in 2022
- SUV – 16% in 2021 and 12% in 2022

## 5.4 Contributory Factors



**Figure 23: Contributory factors**

The analysis from major fatal crashes report indicates that about 85% crashes occurred due to Driver/ Human Error during 2021/22 from 75% in 2020/21. A reduction from 25% in 2020/21 to 11% in 2021/22 on vehicle as a factor.

## SECTION B

### 1. INTRODUCTION

The section covers the vehicle population and human mobility data, as well as driver population. The vehicle population data will encompass the number of registered vehicles inclusive of the status of their roadworthiness and licencing, as well as human mobility in terms of the number of persons per vehicle. The driver population data covers the number of registered drivers including the status and categories of licences

### 2. VEHICLE POPULATION

#### 2.1 Number of Registered Vehicles

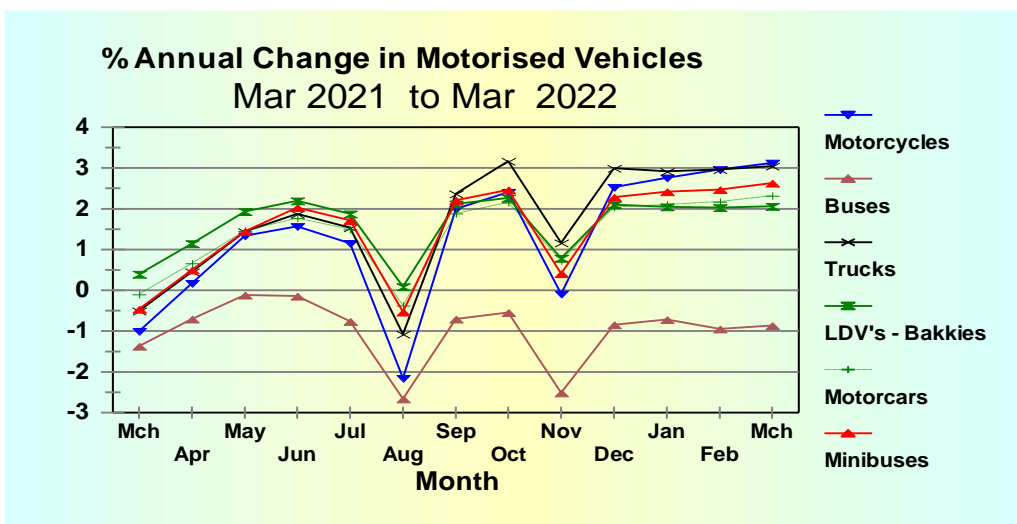
The number of registered vehicles increased by 286 210 (2,25%) from 12 747 784 on 31 March 2021 to 13 033 994 vehicles as on the 31 March 2022. Detail per type of vehicle is given in table below.

Number of Registered Vehicles	Number registered Mar 2021	Number registered Mar 2022	Change	% Change	% of Group Mar 2022	% of Total Mar 2022
<b>Motorised Vehicles</b>						
Motorcars	7 531 996	7 707 210	175 214	2,33	65,31	59,13
Minibuses	342 413	351 426	9 013	2,63	2,98	2,70
Buses	64 665	64 106	-559	-0,86	0,54	0,49
Motorcycles	339 428	350 038	10 610	3,13	2,97	2,69
LDV's - Bakkies	2 630 034	2 684 247	54 213	2,06	22,75	20,59
Trucks	378 862	390 403	11 541	3,05	3,31	3,00
Other & Unknown	248 772	253 144	4 372	1,76	2,15	1,94
<b>Total Motorised</b>	<b>11 536 170</b>	<b>11 800 574</b>	<b>264 404</b>	<b>2,29</b>	<b>100,00</b>	<b>90,54</b>
<b>Towed Vehicles</b>						
Caravans	97 782	97 635	-147	-0,15	7,92	0,75
Heavy Trailers	211 056	223 157	12 101	5,73	18,09	1,71
Light Trailers	888 178	898 247	10 069	1,13	72,83	6,89
Other & Unknown	14 598	14 382	-217	-1,48	1,17	0,11
<b>Total Towed</b>	<b>1 211 614</b>	<b>1 233 421</b>	<b>21 807</b>	<b>1,80</b>	<b>100,00</b>	<b>9,46</b>
<b>All Vehicles</b>	<b>12 747 784</b>	<b>13 033 994</b>	<b>286 210</b>	<b>2,25</b>		<b>100,00</b>

Table 5: Number of registered vehicles per type

The table above shows that the highest percentage change within the motorized vehicles category is for motorcycles with an increase of 3,13%. Trucks recorded percentage change of 3,05%. On towed vehicles, the highest increase is 5,73% for heavy trailers.

The monthly percentage change over the past year for motorised vehicles are shown in the figure below.



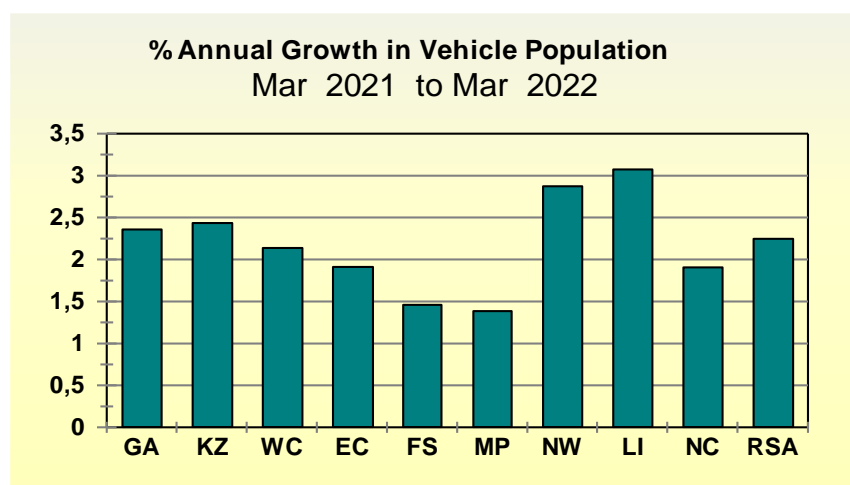
**Figure 24: Percentage Annual Growth in Vehicles**

The total motor vehicle population per Province for March 2021 and March 2022 respectively, is given in table and reflected in the figure below.

Number of Registered Vehicles per Province	Number registered Mar 2021	Number registered Mar 2022	Change	% Change	% of Total Mar 2022
Gauteng	4 883 870	4 999 007	115 137	2,36	38,35
KwaZulu-Natal	1 706 524	1 748 096	41 572	2,44	13,41
Western Cape	2 054 945	2 098 846	43 901	2,14	16,10
Eastern Cape	852 762	869 062	16 300	1,91	6,67
Free State	642 001	651 374	9 373	1,46	5,00
Mpumalanga	920 357	933 099	12 742	1,38	7,16
North West	644 656	663 174	18 518	2,87	5,09
Limpopo	753 448	776 606	23 158	3,07	5,96
Northern Cape	289 221	294 730	5 509	1,90	2,26
<b>RSA</b>	<b>12 747 784</b>	<b>13 033 994</b>	<b>286 210</b>	<b>2,25</b>	<b>100</b>

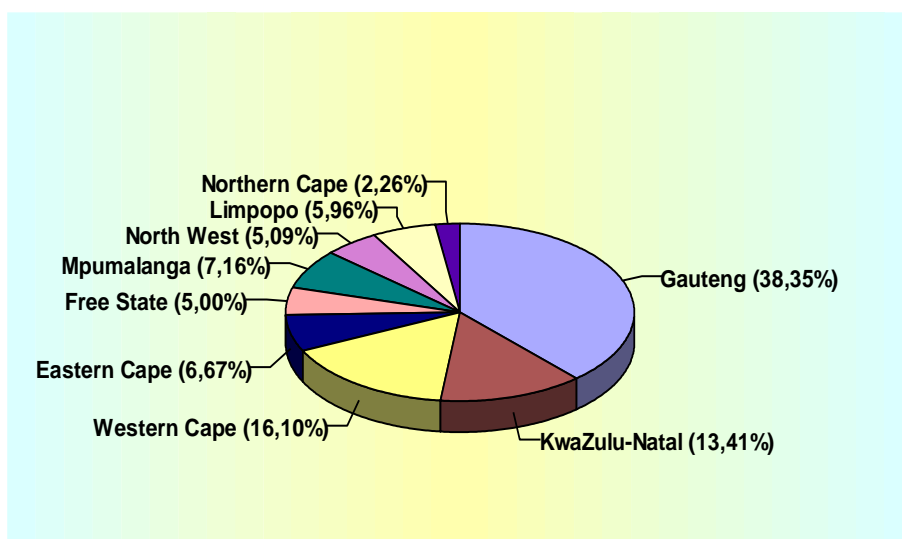
**Table 6: Number of registered vehicles per province**

The table above depicts the number of registered vehicles per province. The highest increase of 3,07% has been recorded for Limpopo from 753 448 in 2021 to 776 606 in 2022. This province then followed by North West, KwaZulu-Natal and Gauteng 2,87%, 2,44% and 2,36% respectively.



**Figure 25: Percentage Annual Growth in Vehicle Population**

The percentage vehicles registered per province as on 31 March 2022 is reflected in the figure below.



**Figure 26: Percentage Vehicles Registered per Province**

The information contained in the figure above depicts 38.31% of vehicles to have been registered in Gauteng province. Whilst Western Cape have a distribution of 16,10% and 13,41% for Kwa-Zulu Natal. These three provinces share a contribution of 67,86%. The remaining six (6) provinces share 32,14%.

More detailed information on the number of vehicles per type registered per Province for March 2021 and March 2022 is given in the table under **Appendix A**.

### 3. Driver Population

#### 3.1 Learner Driving Licences

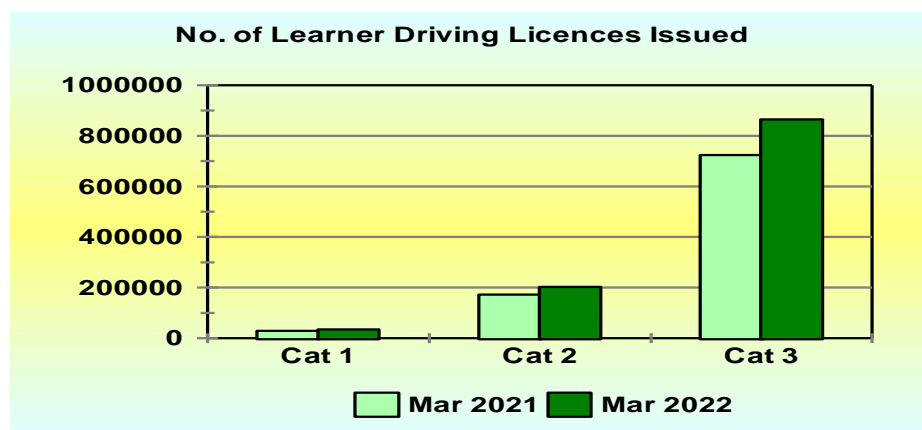
The number of learner driving licences issued increased by 177 115 (19,14%) from 925 170 on 31 March 2021 to 1 102 285 on 31 March 2022. Detail on the number of learner driving licences issued per category is given in table below and graphically reflected in the figure below.

Number of Learner Licences Issued				
Category	Mar 2021	Mar 2022	Change	% Change
1	29 072	34 905	5 833	20,06
2	172 578	202 545	29 967	17,36
3	723 520	864 835	141 315	19,53
<b>Total</b>	<b>925 170</b>	<b>1 102 285</b>	<b>177 115</b>	<b>19,14</b>

**Table 7: Number of learner licences issued**

Learner driving licences are categorised as follows:

- Category 1 : Motorcycle
- Category 2 : Light Motor Vehicle
- Category 3 : Heavy Motor Vehicle



**Figure 27: Number of learner licenses issues**

The table and the figure above depict that most learners enrolled for category 1 (motorcycle) and 3 (heavy motor vehicle) with 20,06% and 19,53% respectively. However, all the categories have recorded an increase compared to the previous year.

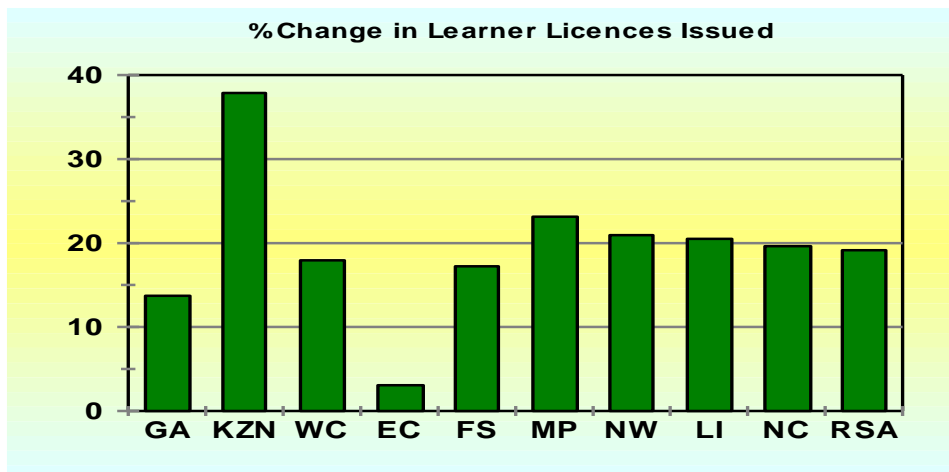
Provincial information in this regard is given in the table below and the percentage change per Province over the 12-month period is reflected in the figure below.

Number of Learners Licences Issued per Province										
Year	GA	KZN	WC	EC	FS	MP	NW	LI	NC	RSA
Mar 2021	292 427	135 536	139 157	76 909	47 690	85 086	50 211	77 797	20 357	925 170
Mar 2022	332 568	186 849	164 108	79 275	55 902	104 768	60 730	93 733	24 352	1 102 285
Change	40 141	51 313	24 951	2 366	8 212	19 682	10 519	15 936	3 995	177 115
% Change	13,73	37,86	17,93	3,08	17,22	23,13	20,95	20,48	19,62	19,14

**Table 8: Number of learners licences issued per province**

With no exception, all the provinces have recorded an increase with regards to the number of Learner Licences issued. The highest increase has been recorded for Kwa-Zulu Natal and Mpumalanga with 37,86% and 23,13% respectively.





**Figure 28: Percentage change in learner licenses issued per province**

## 3.2 Driving Licences Issued and Expired

### 3.2.1 Number of Driving Licences Issued

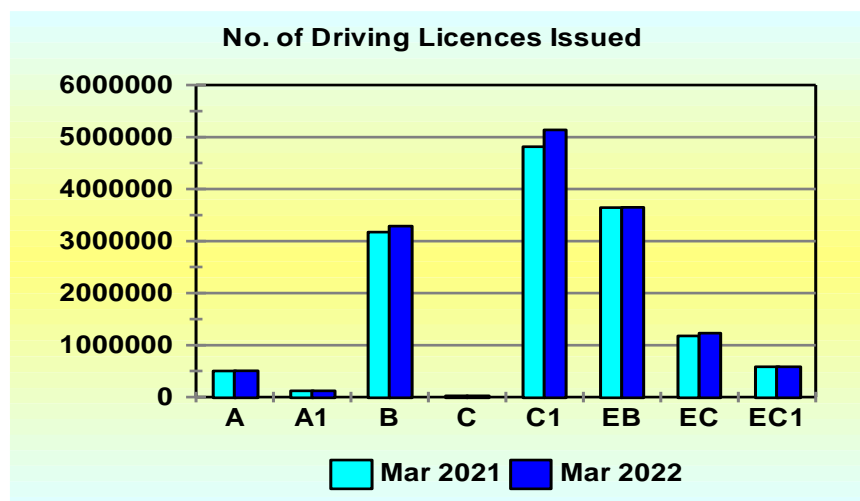
The number of driving licences issued increased by 503 261 (3,59%) from 14 035 426 on 31 March 2021 to 14 538 687 as of 31 March 2022. Details on the number of driving licences issued per category is given in table and graphically reflected in the figure below.

Number of Driving Licences Issued				
Category	Mar 2021	Mar 2022	Change	% Change
A	499 394	506 770	7 376	1,48
A1	122 567	122 502	-65	-0,05
B	3 170 958	3 286 384	115 426	3,64
C	24 599	24 956	357	1,45
C1	4 814 925	5 139 098	324 173	6,73
EB	3 644 717	3 648 504	3 787	0,10
EC	1 174 574	1 227 806	53 232	4,53
EC1	583 692	582 667	-1 025	-0,18
<b>Total</b>	<b>14 035 426</b>	<b>14 538 687</b>	<b>503 261</b>	<b>3,59</b>

**Table 9: Number of driving licences issued**

### Driving licences:

<b>A</b>	Motorcycle > 125 cub.cm	<b>A1</b>	Motorcycle < 125 cub.cm	<b>B</b>	Motor vehicle < 3,500 kg
<b>C</b>	Motorvehicle > 16,000 kg	<b>C1</b>	Motor vehicle 3,500 – 16,000 kg	<b>EB</b>	Articulated motor vehicle <16,000 kg
		<b>EC</b>	Articulated vehicle > 16,000 kg	<b>EC1</b>	Articulated vehicle 3,500 – 16,000 kg



**Figure 29: Number of driving licences issued**

The information contained in the table and figure above depict that the highest percentage change has been recorded for category C1, EC and B with 6,73%, 4,53% and 3,64% respectively.

The number and percentage (%) of driving licences issued per category at the end of March 2022 is reflected in the table below.

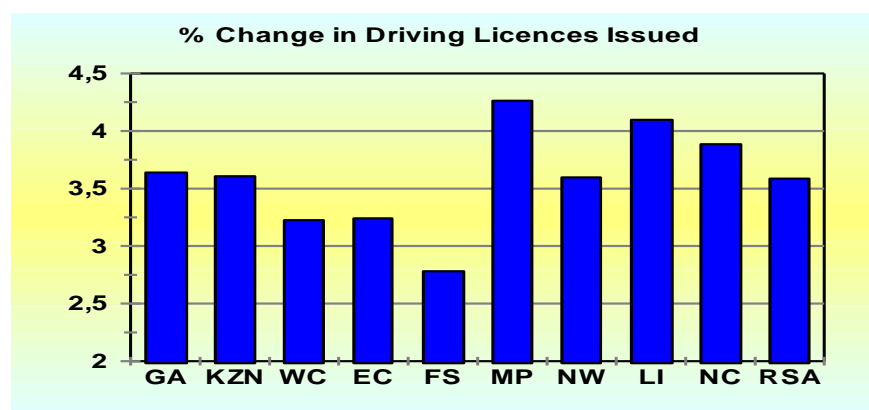
Category	Description	Number	%
A	Motorcycle > 125 cub.cm	506 770	3,49
A1	Motorcycle < 125 cub.cm	122 502	0,84
B	Motor vehicle < 3,5000 kg	3 286 384	22,60
C	Motor vehicle >16,000 kg	24 956	0,17
C1	Motor vehicle 3,500 - 16,000 kg	5 139 098	35,35
EB	Articulated motor vehicle < 16,000 kg	3 648 504	25,10
EC	Articulated vehicle > 16,000 kg	1 227 806	8,45
EC1	Articulated vehicle 3,500 - 16,000 kg	582 667	4,01
<b>Total</b>		<b>14 538 687</b>	<b>100</b>

**Table 10: Number and percentage of driving licences issued per category**

Provincial information in this regard is given in the table below and the percentage change regarding all licences issued per province is reflected in the figure below.

Number of Driving Licences Issued per Province										
Year	GA	KZN	WC	EC	FS	MP	NW	LI	NC	RSA
Mar 2021	4 902 760	2 251 621	2 104 848	1 025 961	685 407	1 055 127	657 294	1 093 438	258 970	14 035 426
Mar 2022	5 081 144	2 332 828	2 172 732	1 059 217	704 466	1 100 111	680 929	1 138 229	269 031	14 538 687
Change	178 384	81 207	67 884	33 256	19 059	44 984	23 635	44 791	10 061	503 261
% Change	3,64	3,61	3,23	3,24	2,78	4,26	3,60	4,10	3,89	3,59

**Table 11: Number of driving licences issued per province**



**Figure 30: Percentage change in driving licenses issued**

All the provinces have recorded an increase as stipulated in the table and figure above with regards to the number of Driving Licences issued. The highest increase has been recorded for Mpumalanga, Limpopo and Northern Cape with 4,26%, 4,10% and 3,89% respectively.

### 3.2.2 Number of Driving Licence Cards Expired

All the provinces have recorded an increase as stipulated in the table and figure above with regards to the number of Driving Licences issued. The highest increase has been recorded for Mpumalanga, Limpopo and Northern Cape with 4,26%, 4,10% and 3,89% respectively.

Mar 2022	Number of Driving Licence Cards Issued and Expired per Province									
Category	GA	KZN	WC	EC	FS	MP	NW	LI	NC	RSA
On system	5 081 144	2 332 828	2 172 732	1 059 217	704 466	1 100 111	680 929	1 138 229	269 031	14 538 687
Not expired	4 238 850	1 886 522	1 793 186	813 064	555 187	929 702	569 907	968 477	223 478	11 978 373
Expired	842 294	446 306	379 546	246 153	149 279	170 409	111 022	169 752	45 553	2 560 314
% Expired	16,58	19,13	17,47	23,24	21,19	15,49	16,30	14,91	16,93	17,61

Table 12: Number of driving licences cards issued and expired per province

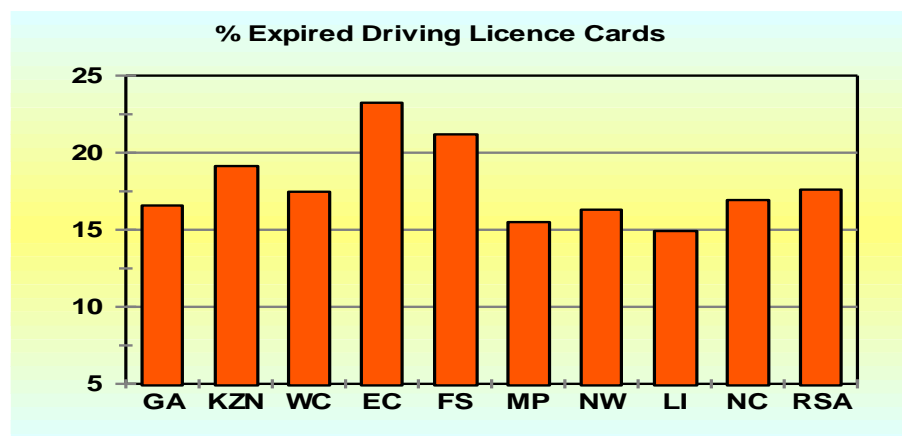


Figure 31: Percentage expired driving license cards

### 3.3 Professional Driving Permits Issued and Expired

#### 3.3.1 Number of Professional Driving Permits Issued

The number of Professional Driving Permits (PrDP's) issued decreased by 262 296 (21,93%) from 1 196 190 on 31 March 2021 to 933 894 on 31 March 2022. Detail on the number of PrDPs issued per category is given in table below and graphically reflected in the figure below.

Number of PrDP's Issued				
Category	Mar 2021	Mar 2022	Change	% Change
G	8 274	5 613	-2 661	-32,16
P G	1 139 560	880 394	-259 166	-22,74
D G	129	136	7	5,43
D P G	48 227	47 751	-476	-0,99
<b>Total</b>	<b>1 196 190</b>	<b>933 894</b>	<b>-262 296</b>	<b>-21,93</b>

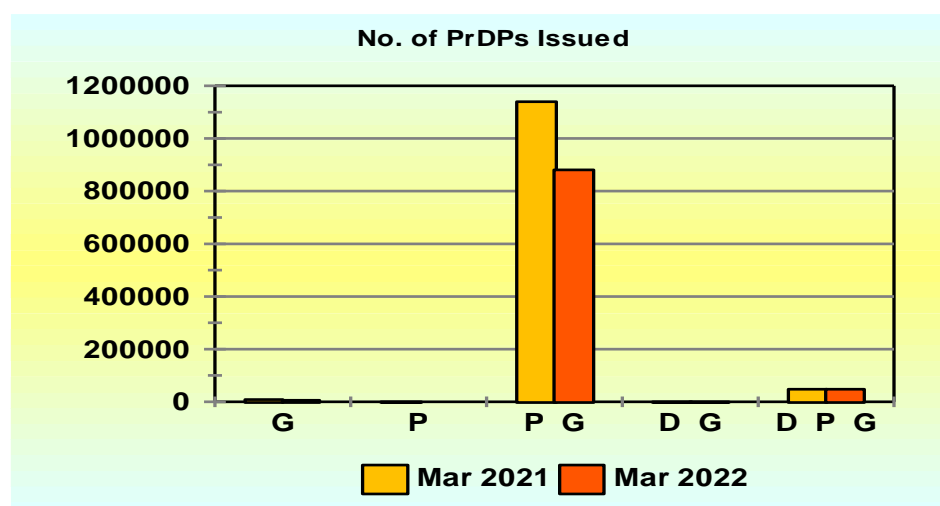
**Table 13: Number of PrDP's issued**

#### Professional Driving Permits (PrDPs)

G: Goods

P: Passengers

D: Dangerous goods



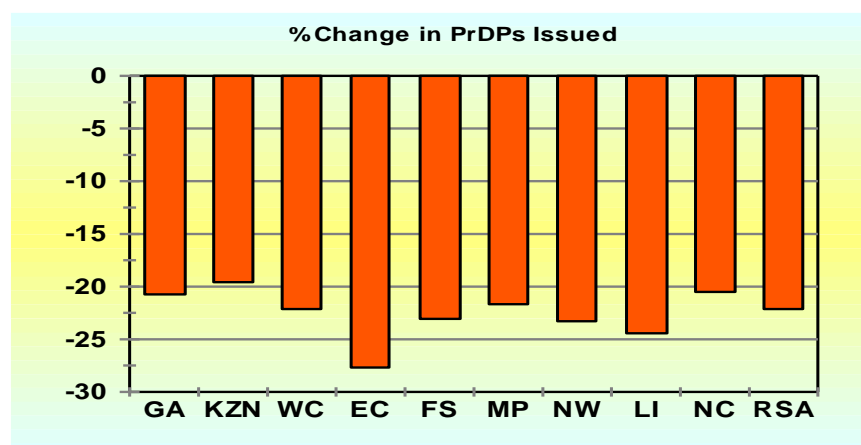
**Figure 32: Number of PrDP's issued**

The table and figure above depict that most drivers do obtain PrDP's for category P and G (Passengers and Goods).

Provincial information in this regard is given in the table below and the percentage change regarding all categories of PrDP's issued per Province is reflected in the figure below.

Number of Professional Driving Permits (PrDP's) Issued per Province										
Year	GA	KZN	WC	EC	FS	MP	NW	LI	NC	RSA
Mar 2021	325 004	212 548	170 406	99 330	69 235	117 686	57 505	116 322	28 154	1 196 190
Mar 2022	257 628	170 932	133 013	71 942	53 369	92 307	44 212	88 112	22 379	933 894
Change	-67 376	-41 616	-37 393	-27 388	-15 866	-25 379	-13 293	-28 210	-5 775	-262 296
% Change	-20,73	-19,58	-21,94	-27,57	-22,92	-21,57	-23,12	-24,25	-20,51	-21,93

**Table 14: Number of professional driving permits (PrDP's) issued per province**



**Figure 33: Percentage in PrDP's issued**

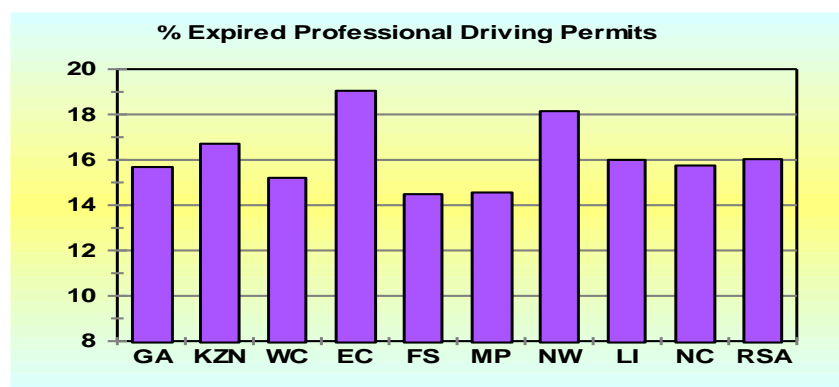
On a provincial level, all provinces have recorded an increase as indicated in the table and figure above. The highest increase has been recorded for Eastern Cape, Limpopo and North West with 27,57%, 24,25% and 23,12% respectively.

### 3.3.2 Number of Expired PrDPs

The information in the table below shows that as on the 31 March 2022 there were 149 720 expired Professional Driving Permits (PrDPs) recorded on the National Traffic Information System (NaTIS). This figure represents 16,03% of all PrDPs issued. This information is also reflected in the figure below.

Mar 2022	Number of Professional Driving Permits (PrDPs) Issued and Expired per Province									
Category	GA	KZN	WC	EC	FS	MP	NW	LI	NC	RSA
On system	257 628	170 932	133 013	71 942	53 369	92 307	44 212	88 112	22 379	933 894
Not expired	217 225	142 368	112 783	58 238	45 639	78 865	36 189	74 013	18 854	784 174
Expired	40 403	28 564	20 230	13 704	7 730	13 442	8 023	14 099	3 525	149 720
% Expired	15,68	16,71	15,21	19,05	14,48	14,56	18,15	16,00	15,75	16,03

**Table 15: Number of professional driving permits (PrDP's) issued and expired per province**



**Figure 34: Percentage expired professional driving permits**

Provinces recorded the highest increase with regards to expired PrDPs are Eastern Cape with 19,05% followed by North West and Kwa-Zulu Natal with 18,15% and 16,17% respectively.

Detailed information on the number of learner licences, driving licences and PrDPs per Province is provided in the tables under **Appendix B**.

**Compiled by**

.....

**Ms Magadi Gainewe**

**Manager: Data Analysis and Reporting**

**Date:**

**Reviewed and supported by**

.....

**Mr Emmanuel Phasha**

**General Manager: Road Traffic Information**

**Date:**



**Recommended by**

.....

**Mr Kevin Kara-Vala**

**Executive Manager: Road Traffic Information & Technology**

**Date:**

**Approved by**

.....

**Advocate Makhosini Msibi**

**Chief Executive Officer**

**Date:**

## APPENDIX A

Mar 2019	Number of Registered Vehicles per Province									Total RSA
	GA	KZ	WC	EC	FS	MP	NW	LI	NC	
<b>Motorised Veh's</b>										
Motorcars	3 080 368	1 011 754	1 290 107	462 628	317 908	436 627	324 229	341 330	129 795	7 394 746
Minibuses	128 190	55 463	37 110	24 584	12 871	24 747	19 775	24 424	5 567	332 731
Buses	20 973	7 972	7 259	4 421	3 229	8 271	4 224	6 682	1 726	64 757
Motorcycles	140 684	31 188	85 621	21 681	18 559	18 437	13 050	9 042	7 990	346 252
LDV's - Bakkies	842 801	366 934	335 499	207 398	131 845	222 756	155 059	234 549	80 229	2 577 070
Trucks	138 841	49 124	44 797	22 371	21 738	47 967	17 420	26 115	9 117	377 490
Other & Unkwn	38 431	33 517	41 682	18 119	37 250	29 478	23 736	18 419	10 020	250 650
<b>Sub-Total</b>	<b>4 390 288</b>	<b>1 555 952</b>	<b>1 842 075</b>	<b>761 202</b>	<b>543 400</b>	<b>788 283</b>	<b>557 493</b>	<b>660 561</b>	<b>244 444</b>	<b>11 343 696</b>
<b>Towed Veh's</b>										
Caravans	38 205	7 133	18 170	5 146	7 428	10 063	6 245	5 479	2 737	100 606
Heavy Trailers	61 671	23 636	22 534	7 227	18 353	40 848	10 967	9 570	5 769	200 575
Light Trailers	336 826	82 279	148 722	57 775	63 416	65 832	54 064	43 184	29 150	881 248
Unknown	2 394	1 497	2 203	1 525	1 924	1 866	2 176	1 192	666	15 441
<b>Sub-Total</b>	<b>439 096</b>	<b>114 545</b>	<b>191 629</b>	<b>71 673</b>	<b>91 121</b>	<b>118 609</b>	<b>73 452</b>	<b>59 425</b>	<b>38 322</b>	<b>1 197 870</b>
<b>All Vehicles</b>	<b>4 829 383</b>	<b>1 670 496</b>	<b>2 033 704</b>	<b>832 875</b>	<b>634 521</b>	<b>906 892</b>	<b>630 944</b>	<b>719 985</b>	<b>282 766</b>	<b>12 541 566</b>

Mar 2021	Province									Total RSA
	GA	KZ	WC	EC	FS	MP	NW	LI	NC	
<b>Motorised Veh's</b>										
Motorcars	3 119 497	1 035 910	1 297 906	477 339	322 968	451 036	334 981	359 511	132 848	7 531 996
Minibuses	128 765	57 872	37 333	26 023	13 058	26 050	20 853	26 402	6 057	342 413
Buses	20 537	8 132	6 987	4 651	3 308	8 261	4 097	6 908	1 784	64 665
Motorcycles	139 927	30 272	84 713	21 135	17 629	17 240	12 407	8 617	7 488	339 428
LDV's - Bakkies	857 042	375 320	341 547	209 861	133 485	227 936	158 768	243 907	82 168	2 630 034
Trucks	139 606	50 624	46 159	22 530	22 621	43 665	17 391	27 091	9 175	378 862
Other & Unkwn	37 996	33 297	42 377	18 396	36 347	29 051	22 609	18 508	10 194	248 772
<b>Sub-Total</b>	<b>4 443 370</b>	<b>1 591 427</b>	<b>1 857 022</b>	<b>779 935</b>	<b>549 416</b>	<b>803 239</b>	<b>571 106</b>	<b>690 944</b>	<b>249 714</b>	<b>11 536 170</b>
<b>Towed Veh's</b>										
Caravans	36 556	6 687	18 477	5 080	7 075	9 664	6 116	5 451	2 676	97 782
Heavy Trailers	65 255	24 856	24 622	7 561	20 397	39 166	11 250	11 900	6 049	211 056
Light Trailers	336 513	82 155	152 680	58 697	63 288	66 529	54 182	44 019	30 115	888 178
Unknown	2 177	1 400	2 145	1 489	1 826	1 760	2 002	1 135	667	14 598
<b>Sub-Total</b>	<b>440 501</b>	<b>115 098</b>	<b>197 924</b>	<b>72 827</b>	<b>92 586</b>	<b>117 119</b>	<b>73 550</b>	<b>62 505</b>	<b>39 507</b>	<b>1 211 614</b>
<b>All Vehicles</b>	<b>4 883 870</b>	<b>1 706 524</b>	<b>2 054 945</b>	<b>852 762</b>	<b>642 001</b>	<b>920 357</b>	<b>644 656</b>	<b>753 448</b>	<b>289 221</b>	<b>12 747 784</b>

% Change Mar 2019-2021	Number of Registered Vehicles per Province									Total RSA
	GA	KZ	WC	EC	FS	MP	NW	LI	NC	
<b>Motorised Vehicles</b>										
Motorcars	1,27	2,39	0,60	3,18	1,59	3,30	3,32	5,33	2,35	1,86
Minibuses	0,45	4,34	0,60	5,85	1,45	5,27	5,45	8,10	8,80	2,91
Buses	-2,08	2,01	-3,75	5,20	2,45	-0,12	-3,01	3,38	3,36	-0,14
Motorcycles	-0,54	-2,94	-1,06	-2,52	-5,01	-6,49	-4,93	-4,70	-6,28	-1,97
LDV's - Bakkies	1,69	2,29	1,80	1,19	1,24	2,33	2,39	3,99	2,42	2,06
Trucks	0,55	3,05	3,04	0,71	4,06	-8,97	-0,17	3,74	0,64	0,36
Other & Unknown	-1,13	-0,66	1,67	1,53	-2,43	-1,45	-4,75	0,48	1,74	-0,75
<b>Sub-Total</b>	<b>1,21</b>	<b>2,28</b>	<b>0,81</b>	<b>2,46</b>	<b>1,11</b>	<b>1,90</b>	<b>2,44</b>	<b>4,60</b>	<b>2,16</b>	<b>1,70</b>
<b>Towed Vehicles</b>										
Caravans	-4,32	-6,25	1,69	-1,28	-4,75	-3,97	-2,07	-0,51	-2,23	-2,81
Heavy Trailers	5,81	5,16	9,27	4,62	11,14	-4,12	2,58	24,35	4,85	5,23
Light Trailers	-0,09	-0,15	2,66	1,60	-0,20	1,06	0,22	1,93	3,31	0,79
Unknown	-9,07	-6,48	-2,66	-2,36	-5,12	-5,71	-7,98	-4,78	0,15	-5,46
<b>Sub-Total</b>	<b>0,32</b>	<b>0,48</b>	<b>3,28</b>	<b>1,61</b>	<b>1,61</b>	<b>-1,26</b>	<b>0,13</b>	<b>5,18</b>	<b>3,09</b>	<b>1,15</b>
<b>All Vehicles</b>	<b>1,13</b>	<b>2,16</b>	<b>1,04</b>	<b>2,39</b>	<b>1,18</b>	<b>1,48</b>	<b>2,17</b>	<b>4,65</b>	<b>2,28</b>	<b>1,64</b>

## APPENDIX B-1

Mar 2019	Number of Learners Licences Issued per Province									
Category	GA	KZ	WC	EC	FS	MP	NW	LI	NC	RSA
1	12 970	3 336	12 481	2 423	2 135	2 096	1 470	1 287	932	39 130
2	63 204	31 692	78 646	23 930	13 907	8 015	8 121	4 734	4 564	236 813
3	259 413	156 742	86 720	71 784	51 661	96 768	50 589	100 009	22 444	896 130
<b>Total</b>	<b>335 587</b>	<b>191 770</b>	<b>177 847</b>	<b>98 137</b>	<b>67 703</b>	<b>106 879</b>	<b>60 180</b>	<b>106 030</b>	<b>27 940</b>	<b>1 172 073</b>
Mar 2021	Number of Learners Licences Issued per Province									
Category	GA	KZ	WC	EC	FS	MP	NW	LI	NC	RSA
1	11 092	2 336	8 439	1 576	1 453	1 580	1 085	962	549	29 072
2	47 187	19 346	61 706	16 575	9 819	5 497	6 048	3 057	3 343	172 578
3	234 148	113 854	69 012	58 758	36 418	78 009	43 078	73 778	16 465	723 520
<b>Total</b>	<b>292 427</b>	<b>135 536</b>	<b>139 157</b>	<b>76 909</b>	<b>47 690</b>	<b>85 086</b>	<b>50 211</b>	<b>77 797</b>	<b>20 357</b>	<b>925 170</b>
% Change	Number of Learners Licences Issued per Province									
Category	GA	KZ	WC	EC	FS	MP	NW	LI	NC	RSA
1	-14,48	-29,98	-32,39	-34,96	-31,94	-24,62	-26,19	-25,25	-41,09	-25,70
2	-25,34	-38,96	-21,54	-30,74	-29,40	-31,42	-25,53	-35,42	-26,75	-27,12
3	-9,74	-27,36	-20,42	-18,15	-29,51	-19,39	-14,85	-26,23	-26,64	-19,26
<b>Total</b>	<b>-12,86</b>	<b>-29,32</b>	<b>-21,75</b>	<b>-21,63</b>	<b>-29,56</b>	<b>-20,39</b>	<b>-16,57</b>	<b>-26,63</b>	<b>-27,14</b>	<b>-21,07</b>

**Learner Licences :**

Category 1 : Motorcycle

Category 2 : Light Motor Vehicle

Category 3 : Heavy Motor Vehicle

## APPENDIX B-2

Mar 2019 Number of Driving Licences Issued per Province										
Category	GA	KZ	WC	EC	FS	MP	NW	LI	NC	RSA
<b>A</b>	177 809	61 611	118 133	35 134	26 465	23 213	19 928	15 349	9 547	<b>487 189</b>
<b>A1</b>	43 581	13 005	28 974	9 155	8 868	6 551	6 274	3 810	2 403	<b>122 621</b>
<b>B</b>	1 094 630	479 360	625 668	246 047	149 921	125 295	119 305	78 136	53 949	<b>2 972 311</b>
<b>C</b>	4 845	4 933	5 190	1 184	536	3 000	1 715	1 839	474	<b>23 716</b>
<b>C1</b>	1 435 322	722 529	231 798	237 409	176 108	485 136	242 833	639 763	75 753	<b>4 246 651</b>
<b>EB</b>	1 285 594	575 683	814 208	313 345	175 488	158 857	140 578	109 098	65 082	<b>3 637 933</b>
<b>EC</b>	318 019	187 582	126 746	75 638	83 484	119 699	57 676	102 597	26 176	<b>1 097 617</b>
<b>EC1</b>	218 442	69 632	50 240	46 398	35 072	52 135	36 855	65 905	11 386	<b>586 065</b>
<b>Total</b>	<b>4 578 242</b>	<b>2 114 335</b>	<b>2 000 957</b>	<b>964 310</b>	<b>655 942</b>	<b>973 886</b>	<b>625 164</b>	<b>1 016 497</b>	<b>244 770</b>	<b>13 174 103</b>
Mar 2021 Number of Driving Licences Issued per Province										
Category	GA	KZ	WC	EC	FS	MP	NW	LI	NC	RSA
<b>A</b>	181 926	62 713	123 361	35 792	26 597	23 519	20 036	15 765	9 685	<b>499 394</b>
<b>A1</b>	43 295	13 015	29 557	9 204	8 737	6 442	6 168	3 790	2 359	<b>122 567</b>
<b>B</b>	1 179 393	503 464	674 926	262 405	158 532	129 958	124 031	81 182	57 067	<b>3 170 958</b>
<b>C</b>	4 976	4 970	5 582	1 242	541	3 252	1 676	1 862	498	<b>24 599</b>
<b>C1</b>	1 649 049	819 918	262 655	276 001	194 605	550 850	270 389	705 560	85 898	<b>4 814 925</b>
<b>EB</b>	1 284 154	575 550	825 123	314 695	174 437	157 440	139 189	109 206	64 923	<b>3 644 717</b>
<b>EC</b>	342 872	202 458	133 596	80 011	87 106	131 699	59 831	109 853	27 148	<b>1 174 574</b>
<b>EC1</b>	217 095	69 533	50 048	46 611	34 852	51 967	35 974	66 220	11 392	<b>583 692</b>
<b>Total</b>	<b>4 902 760</b>	<b>2 251 621</b>	<b>2 104 848</b>	<b>1 025 961</b>	<b>685 407</b>	<b>1 055 127</b>	<b>657 294</b>	<b>1 093 438</b>	<b>258 970</b>	<b>14 035 426</b>
% Change Number of Driving Licences Issued per Province										
Category	GA	KZ	WC	EC	FS	MP	NW	LI	NC	RSA
<b>A</b>	2,32	1,79	4,43	1,87	0,50	1,32	0,54	2,71	1,45	<b>2,51</b>
<b>A1</b>	-0,66	0,08	2,01	0,54	-1,48	-1,66	-1,69	-0,52	-1,83	<b>-0,04</b>
<b>B</b>	7,74	5,03	7,87	6,65	5,74	3,72	3,96	3,90	5,78	<b>6,68</b>
<b>C</b>	2,70	0,75	7,55	4,90	0,93	8,40	-2,27	1,25	5,06	<b>3,72</b>
<b>C1</b>	14,89	13,48	13,31	16,26	10,50	13,55	11,35	10,28	13,39	<b>13,38</b>
<b>EB</b>	-0,11	-0,02	1,34	0,43	-0,60	-0,89	-0,99	0,10	-0,24	<b>0,19</b>
<b>EC</b>	7,81	7,93	5,40	5,78	4,34	10,03	3,74	7,07	3,71	<b>7,01</b>
<b>EC1</b>	-0,62	-0,14	-0,38	0,46	-0,63	-0,32	-2,39	0,48	0,05	<b>-0,40</b>
<b>Total</b>	<b>7,09</b>	<b>6,49</b>	<b>5,19</b>	<b>6,39</b>	<b>4,49</b>	<b>8,34</b>	<b>5,14</b>	<b>7,57</b>	<b>5,80</b>	<b>6,54</b>

### Driving Licences:

<b>A</b>	Motorcycle > 125 cub.cm	<b>A1</b>	Motorcycle < 125 cub.cm	<b>B</b>	Motor vehicle < 3,5000 kg
<b>C</b>	Motorvehicle > 16,000 kg	<b>C1</b>	Motor vehicle 3,500 – 16,000 kg	<b>EB</b>	Articulated motor vehicle <16,000 kg
		<b>EC</b>	Articulated vehicle > 16,000 kg	<b>EC1</b>	Articulated vehicle 3,500 – 16,000 kg

### APPENDIX B-3

Mar 2019	Number of Professional Driving Permits (PrDP's) Issued per Province									
Category	GA	KZ	WC	EC	FS	MP	NW	LI	NC	RSA
G	1 474	1 611	1 486	702	775	833	368	717	340	8 306
P G	272 381	182 211	150 026	86 132	62 791	100 860	51 582	104 481	24 126	1 034 590
D G	30	9	22	15	20	8	15	44	2	165
D P G	14 050	10 946	4 375	2 418	3 164	3 555	1 263	1 997	759	42 527
<b>Total</b>	<b>287 935</b>	<b>194 777</b>	<b>155 909</b>	<b>89 267</b>	<b>66 750</b>	<b>105 256</b>	<b>53 228</b>	<b>107 239</b>	<b>25 227</b>	<b>1 085 588</b>
Mar 2021										
Category	GA	KZ	WC	EC	FS	MP	NW	LI	NC	RSA
G	1 526	1 565	1 497	659	758	806	408	695	360	8 274
P G	306 949	198 589	164 172	95 966	65 240	112 528	55 740	113 401	26 975	1 139 560
D G	29	16	12	8	14	14	11	17	8	129
D P G	16 500	12 378	4 725	2 697	3 223	4 338	1 346	2 209	811	48 227
<b>Total</b>	<b>325 004</b>	<b>212 548</b>	<b>170 406</b>	<b>99 330</b>	<b>69 235</b>	<b>117 686</b>	<b>57 505</b>	<b>116 322</b>	<b>28 154</b>	<b>1 196 190</b>
% Change										
Category	GA	KZ	WC	EC	FS	MP	NW	LI	NC	RSA
G	3,53	-2,86	0,74	-6,13	-2,19	-3,24	10,87	-3,07	5,88	-0,39
P G	12,69	8,99	9,43	11,42	3,90	11,57	8,06	8,54	11,81	10,15
D G	-3,33	77,78	-45,45	-46,67	-30,00	75,00	-26,67	-61,36	300,00	-21,82
D P G	17,44	13,08	8,00	11,54	1,86	22,03	6,57	10,62	6,85	13,40
<b>Total</b>	<b>12,87</b>	<b>9,12</b>	<b>9,30</b>	<b>11,27</b>	<b>3,72</b>	<b>11,81</b>	<b>8,04</b>	<b>8,47</b>	<b>11,60</b>	<b>10,19</b>

#### Professional Driving Permits (PrDPs)

G : Goods

P : Passengers

D : Dangerous goods



Road Traffic  
Management Corporation

Road Traffic Management Corporation  
Eco Origin Office Park, Block F  
349 Witch-Hazel Street  
Highveld Ext 79  
Tell: 012 999 5200

.....  
Want to know more about the RTMC - visit [www.rtmc.co.za](http://www.rtmc.co.za)