



Road Traffic
Management Corporation

State of Road Safety Report

Quarterly Report: October - December 2021



transport

Department:
Transport
REPUBLIC OF SOUTH AFRICA



Table of contents

Table of contents	ii
List of Figures	5
List of acronyms and abbreviations	7
1. OBJECTIVE OF THE REPORT	8
2. EXECUTIVE SUMMARY	9
SECTION A	11
1. INTRODUCTION	11
2. ROAD FATAL CRASHES	13
3. ROAD FATALITIES	22
4. MAJOR CRASHES INVESTIGATED	29
SECTION B	34
1. INTRODUCTION	34
2. VEHICLE POPULATION	34
3. DRIVER POPULATION	54

List of Tables

Table 1: Number of fatal crashes per Province	13
Table 2: Comparison of fatalities per province for the two quarters	22
Table 3: Number of major crashes, fatalities, and injuries for two years	29
Table 4: Number of registered vehicles per type.....	35
Table 5: Number of registered vehicles per province	37
Table 6: Estimated mid-month human population per province - million	40
Table 7: Average number of persons per vehicle (excluding trucks, other, unknown and towed vehicles)	40
Table 8: Percentage improvement in mobility per province	41
Table 9: Average number of persons per "heavy" passenger transport vehicle (buses and minibuses)	42
Table 10: Percentage improvement on average number of persons per "heavy"	43
Table 11: Average number of public transport vehicles (buses and minibuses) per 10,000 human population.....	45
Table 12: Number of un-roadworthy, un-licenced vehicles or both	46
Table 13: Number of vehicles that are un-roadworthy or un-licenced or both	47
Table 14: Number of un-roadworthy vehicles	48
Table 15: Number of un-roadworthy vehicles	49
Table 16: Number of un-licenced vehicles.....	51
Table 17: Number of un-licenced vehicles.....	52
Table 18: Number of learner licences issued	54
Table 19: Number of learners licences issued per province	55
Table 20: Number of driving licences issued.....	56
Table 21: Number and percentage of driving licences issued per category	57
Table 22: Number of driving licences issued per province	58
Table 23: Number of driving licences cards issued and expired per province	59
Table 24: Number of PrDP's issued	60

Table 25: Number of professional driving permits (PrDP's) issued per province 61

Table 26: Number of professional driving permits (PrDP's) issued and expired per province 62

List of Figures

Figure 1: Percentage distribution of fatal crashes per province	14
Figure 2: Percentage distribution of fatal crashes per day of week	15
Figure 3: Percentage distribution of fatal crashes per time of day	15
Figure 4: Percentage distribution of crash types	16
Figure 5: Percentage distribution of fatal crashes per vehicle type	17
Figure 6: Comparison of contributory factors	18
Figure 7: Percentage distribution of human factors	19
Figure 8: Percentage distribution of road and environmental factors	20
Figure 9: Percentage distribution for vehicle factor	21
Figure 10: Percentage distribution of fatalities per road user	23
Figure 11: Percentage distribution of fatalities per gender	24
Figure 12: Percentage distribution of fatalities per race	24
Figure 13: Percentage distribution of fatalities per age for drivers.....	25
Figure 14: Percentage distribution of fatalities per age for passengers	26
Figure 15: Percentage distribution of fatalities per age for pedestrians	27
Figure 16: Percentage distribution of fatalities per age for cyclists	27
Figure 17: Number of major crashes, fatalities, and injuries.....	30
Figure 18: Comparative view of the number of major crashes per province.....	31
Figure 19: Comparative view of the fatalities from major crashes per province.....	32
Figure 20: Major crashes per crash types	32
Figure 21: Vehicles involved in major crashes	33
Figure 22: Percentage distribution of the contributory	33
Figure 23: Percentage Annual Growth in Vehicles	36
Figure 24: Percentage Annual Growth in Vehicles	36
Figure 25: Percentage Annual Growth in Vehicle Population	37
Figure 26: Percentage Annual Growth in Vehicle Population	38

Figure 27: Percentage Vehicles Registered per Province	39
Figure 28: Average number of persons per vehicle (excluding trucks,	41
Figure 29: Percentage improvement in mobility of persons	41
Figure 30: Average number of persons per " heavy vehicles" (buses and minibuses)	43
Figure 31: Average number of persons per " heavy vehicles" (buses and minibuses)	44
Figure 32: Number of buses and minibuses / 10,000 human population	45
Figure 33: Percentage change in number of vehicles un-roadworthy	47
Figure 34: Percentage of un-roadworthy vehicles	48
Figure 35: Percentage change in number of vehicles that are un-roadworthy per province..	49
Figure 36: Percentage of un-roadworthy vehicles	50
Figure 37: Percentage of un-licenced vehicles	52
Figure 38: Percentage change in number of un-licensed vehicles per province	53
Figure 39: Percentage of un-licensed vehicles	53
Figure 40: Number of learner licenses issues	54
Figure 41: Percentage change in learner licenses issued per province	55
Figure 42: Number of driving licenses issued	57
Figure 43: Percentage change in driving licenses issued	58
Figure 44: Percentage expired driving license cards	59
Figure 45: Number of PrDP's issued	60
Figure 46: Percentage in PrDP's issued	61
Figure 47: Percentage expired professional driving permits.....	62

List of acronyms and abbreviations

CHOCOR	:	CULPABLE HOMICIDE CRIME: OBSERVATION REPORT
EC	:	EASTERN CAPE
GA	:	GAUTENG
FS	:	FREE STATE
LI	:	LIMPOPO
MP	:	MPUMALANGA
NC	:	NORTHERN CAPE
NW	:	NORTH WEST
WC	:	WESTERN CAPE
KZN	:	KWAZULU NATAL
SAPS	:	SOUTH AFRICAN POLICE SERVICE
NATIS	:	ELECTRONIC NATIONAL TRAFFIC INFORMATION SYSTEM
NREP	:	NATIONAL ROLLOUT ENFORCEMENT PLAN

1. OBJECTIVE OF THE REPORT

This report is aimed at achieving the following objectives:

- To provide road traffic fatal crashes and fatalities statistics based on the Culpable Homicide Crash: Observation Report (CHoCOR) Forms; and
- To present statistics on registered vehicles, un-roadworthy vehicles, un-licenced vehicles, driving licence and professional driving permits issued.

2. EXECUTIVE SUMMARY

The report seeks to provide the road crash statistics. The performance is for the period between October to December 2021. The performance per each focus areas have been provided below.

Road Crashes Data

A total number of 3 637 fatalities were recorded for the period between October to December 2021 from 3 000 fatal crashes. An increase of 5% has been recorded for fatal crashes and 7% increase for fatalities. The most affected road users were pedestrians and passengers.

A total number of twenty-seven (27) major crashes were reported and investigated during this period. One-hundred and seventy-one (171) persons were killed, and ninety-five (95) persons sustained injuries in the major crashes.

Vehicle and driver population

The number of registered vehicles increased by 259 475 (2,04%) from 12 697 733 on 31 December 2020 to 12 957 208 vehicles on 31 December 2021

The number of learner driving licences issued increased by 131 384 (13.83%) from 950 231 on 31 December 2020 to 1 081 615 on 31 December 2021.

The number of driving licences issued increased by 497 413 (3.57%) from 13 918 881 on 31 December 2020 to 14 416 294 as of 31 December 2021.

The number of Professional Driving Permits (PrDP's) issued increased by 100 047 (7,97%) from 1 255 194 on 31 December 2020 to 1 355 241 on 31 December 2021.

SECTION A

1. INTRODUCTION

This report is based on information about fatal crashes that were reported to police stations between October and December 2021 using the CHoCOR Forms. In addition, the report includes information about registered vehicles, driving licences and professional driving permits issued from the National Traffic Information System (NaTIS).

1.1 Road crash data collection methodology

The Culpable Homicide Crash Observation Report (CHoCOR) form is used to collect fatal crashes data on daily basis. South African Police Service (SAPS) is the primary source of the fatal crashes data. SAPS provide the Corporation with a list of all recorded fatal crashes (CAS list) and furthermore, the Corporation receives the CHoCOR forms from various police stations. Road Traffic Management Corporation captures, processes, and verifies the data to compile a report.

1.2 Crash Data Flow

Data is collected through the CHoCOR forms. The forms are then submitted to the Corporation either by fax, email or through the phone.

1.3 Data processing

The data is captured, processed, and verified for the compilation of the consolidated statistical report. There is a continuous engagement with provinces for validation purpose.

1.4 Limitations

The road traffic information contained in the report is mainly based on the fatal crashes only. There is still a need for in-depth research to be conducted to collect scientific base facts to complement the administrative data.

1.5 Instruments

The Culpable Homicide Crash Observation Report (CHoCOR) forms are being used by Road Traffic Information unit to record fatality data on daily basis.

2. ROAD FATAL CRASHES

The section covers the data in relation to fatal road crashes. The section will encompass the number of fatal crashes and fatalities, contributory factors, fatality data per road user group and major crashes.

2.1 Number of fatal crashes

This section provides a comparison of road fatal crashes during 3rd quarters in 2020 and 2021. An increase of 138 (5%) has been observed when the two quarters are compared. On a provincial level, only three (3) provinces recorded a decrease while the other six (6) provinces recorded an increase in this regard. The highest percentage change was recorded for Western Cape with 40% followed by Northern Cape with 29%.

Number of Fatal Crashes per Province										
Quarter 3	EC	FS	GP	KZN	LI	MP	NC	NW	WC	RSA
Oct -Dec 2020	398	191	583	566	323	282	82	203	234	2 862
Oct - Dec 2021	347	170	648	603	305	285	106	208	328	3 000
Change	-51	-21	65	37	-18	3	24	5	94	138
% Change	-13	-11	11	7	-6	1	29	2	40	5

Table 1: Number of fatal crashes per Province

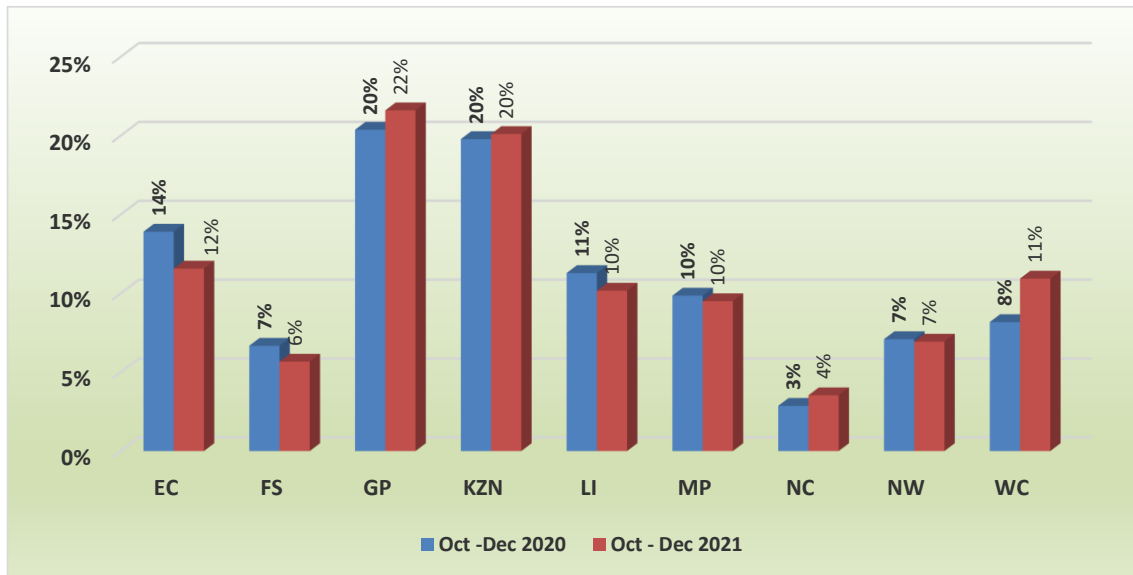


Figure 1: Percentage distribution of fatal crashes per province

The figure above provides percentage distribution of fatal crashes per province. The provinces with the highest contribution of more than 20% are Gauteng and KwaZulu Natal with 22% and 20% respectively for year 2021. Eastern Cape has recorded a decrease of 2% whilst Western Cape has recorded an increase of 3%.

2.1.1 Fatal Crashes per Day of Week

The details of the crashes per day of the week is given in the figure below. Most crashes are still recorded as from Friday until Monday for both reporting periods. However, from the above mentioned three (3) days a slight decrease has been observed for Sunday and Friday. Whilst an increase of 2% has been recorded for Saturday. In 2020 the three day made a contribution of 60% whilst in 2021 62% has been recorded for crashes occurred from Friday to Sunday.

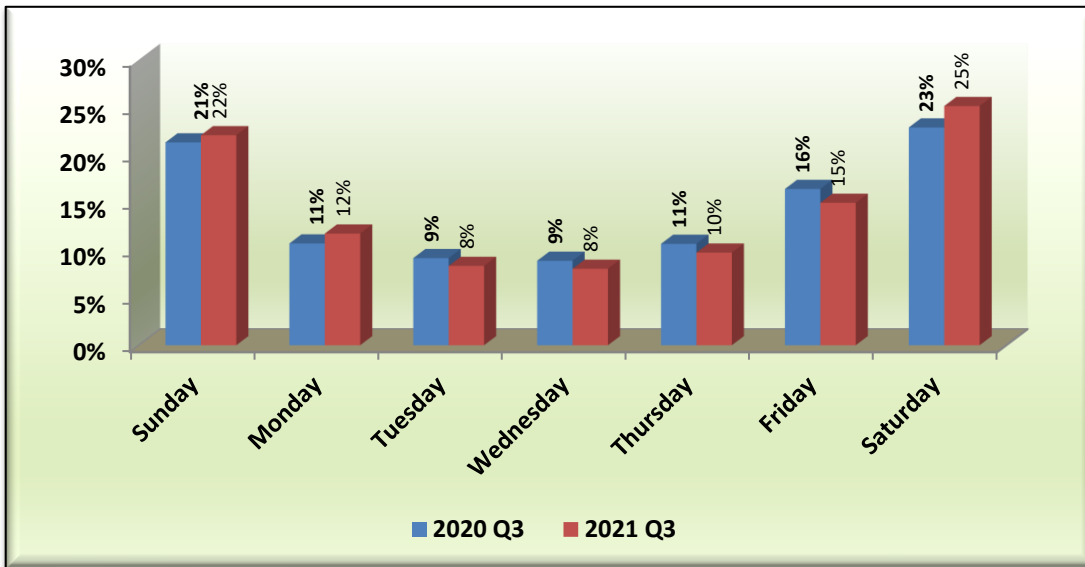


Figure 2: Percentage distribution of fatal crashes per day of week

2.1.2 Fatal Crashes per time of day

The percentage of fatal crashes per time of day for the period under review is reflected in the figure below.

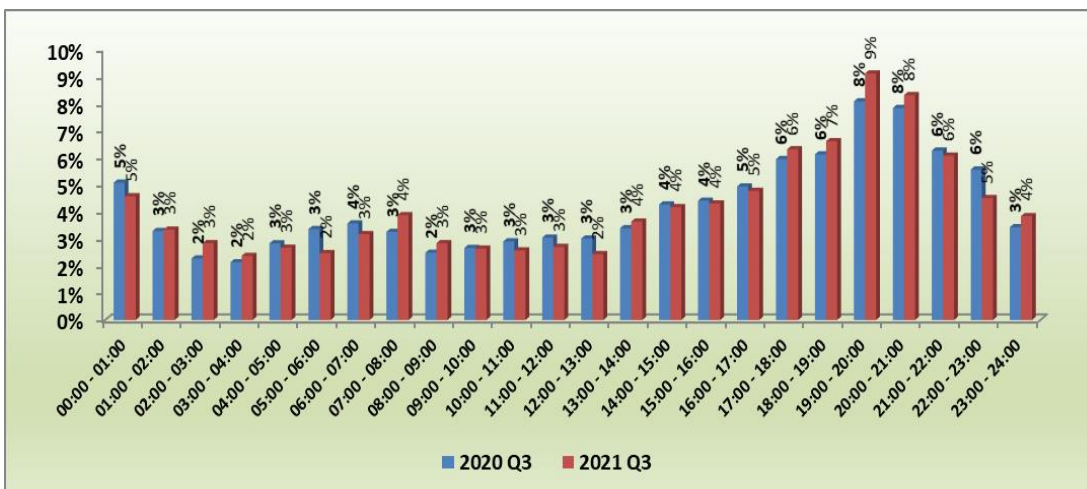


Figure 3: Percentage distribution of fatal crashes per time of day

The figure above depicts a comparison between fatal crashes per time of day for the 2020 and 2021. Majority of the fatal crashes were recorded between 14:00 to 23:00 with 4% and above for both years. However, most fatal crashes were recorded between time slot 19:00 to 21:00 with more than 8% for 2020 and 2021. The figure indicates the information to be skewed to the right of which means that most fatal crashes are recorded in the late hours of the day.

2.1.3 Fatal crashes per crash type

The percentage contribution of fatal crashes per crash type are reflected in the figure below.

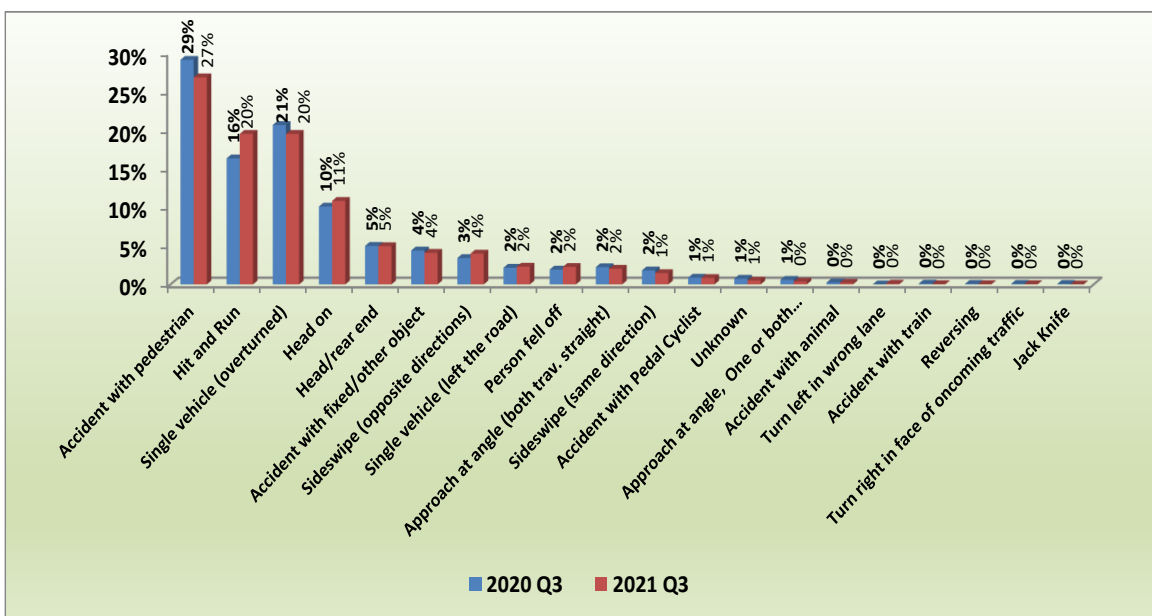


Figure 4: Percentage distribution of crash types

The figure above depicts that most crashes occurred due to crashes with pedestrians, single vehicle overturned and hit and run. A slight decrease has been recorded for accident with pedestrian from 29% in 2020 to 27% in 2021.

Similarly, a slight a decrease of 1% has been recorded for single vehicle overturned. However, an increase of 4% has been recorded for Hit and Run.

2.1.4 Fatal crashes per vehicle type

The percentage contribution of various vehicles involved in the fatal crashes are reflected in the figure below.

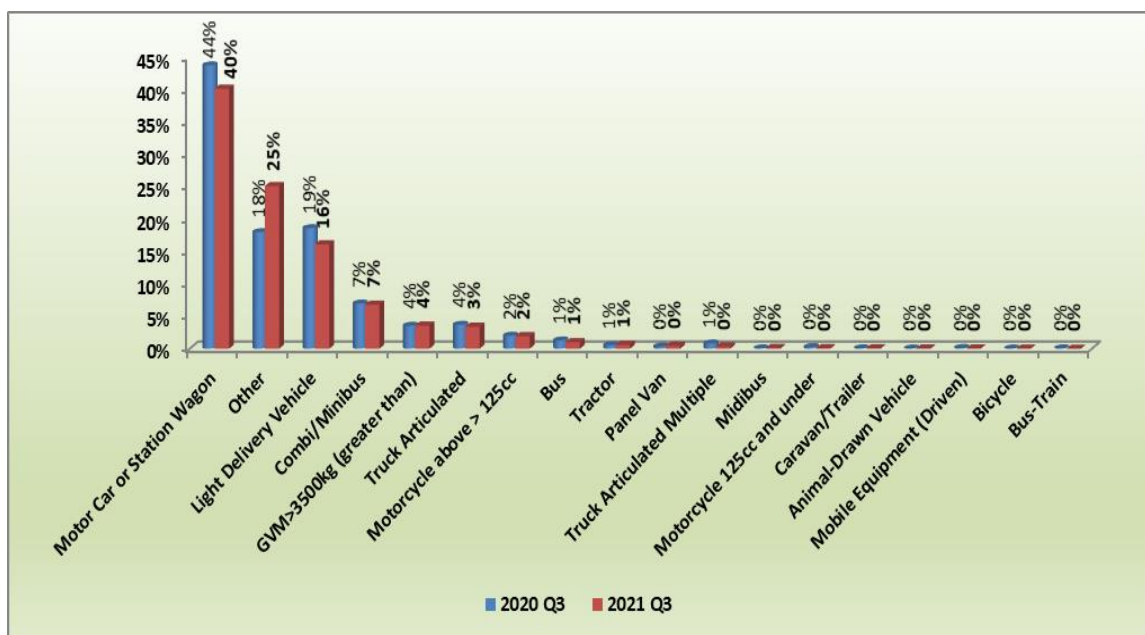


Figure 5: Percentage distribution of fatal crashes per vehicle type

The vehicle types that contributed the highest to fatal crashes were motorcars and LDV's with contributions of 40% and 16%, respectively for 2021. Motor cars recorded a decrease of 4% similarly LDV's recorded a decrease of 3%.

2.2 Contributory factors

The contributory factors for fatal crashes are classified as follows: human factors (defined as a stable, general human abilities and limitations that are valid for all users regardless); vehicle factors (are more focussed on the vehicle itself and they cover issues around mechanical failures; and environment (include limited visibility, poorly marked roads, missing road signs, sudden changes in road infrastructure, gravel road, the state of the road and weather conditions).

Same as the previous year, October to December 2021 still show that human factors remain a challenge with a contribution of 84% of which is less than 85% recorded in 2020. The roads and environmental factors recorded slight decrease of 1%, while vehicle factors remained an increase of 2%.

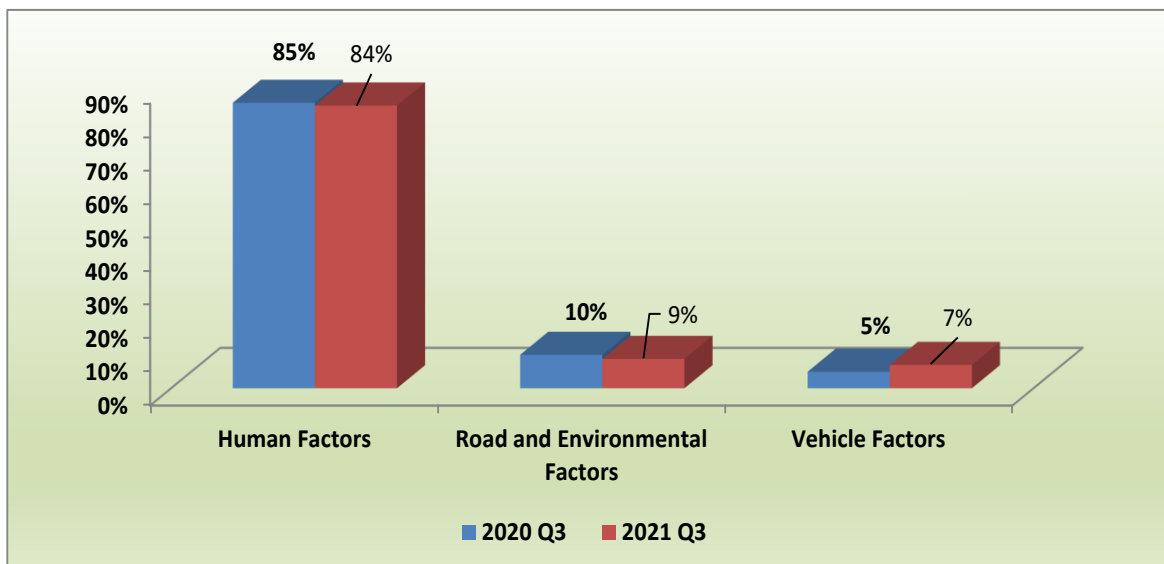


Figure 6: Comparison of contributory factors

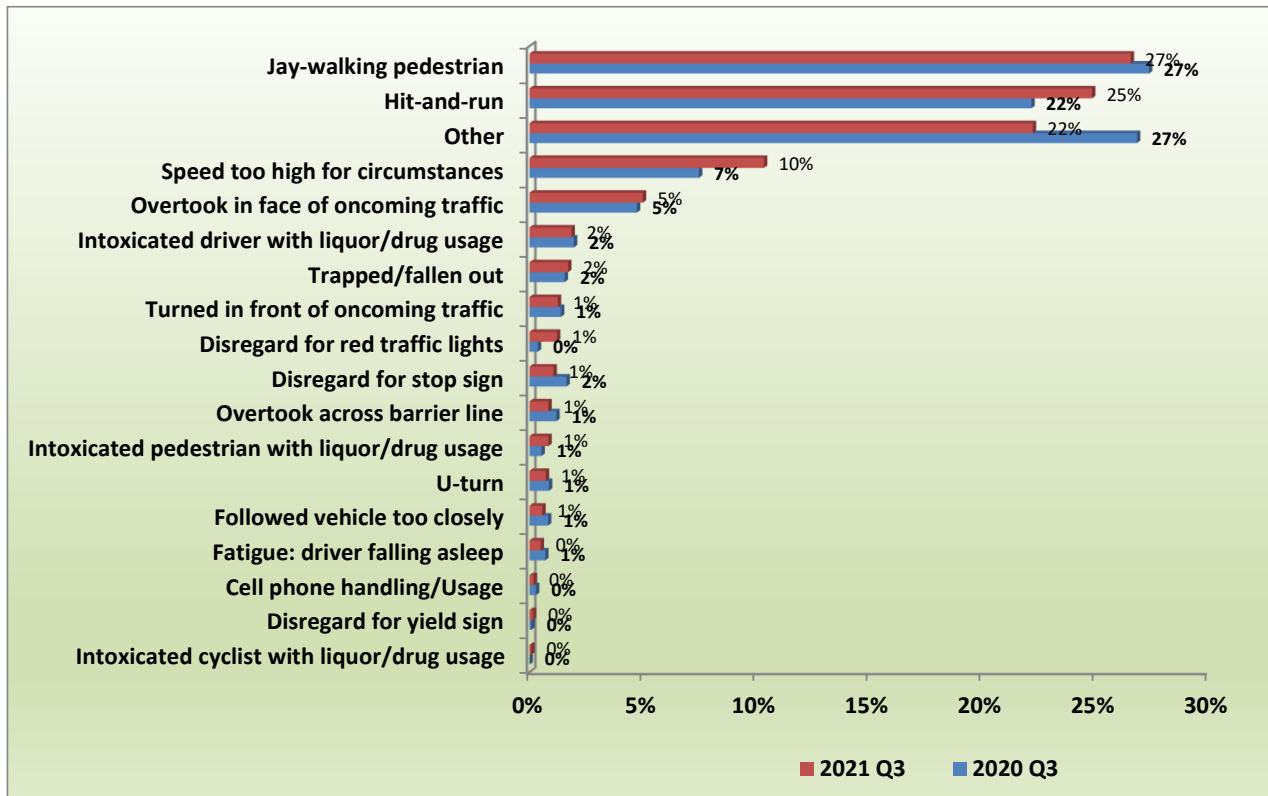


Figure 7: Percentage distribution of human factors

The figure above shows that jay-walking remains to be a challenge within the borders of South Africa. However, an increase of 3% has been recorded for Hit and Run. Similarly, an increase of 3% has been recorded for speed being too high for circumstances.

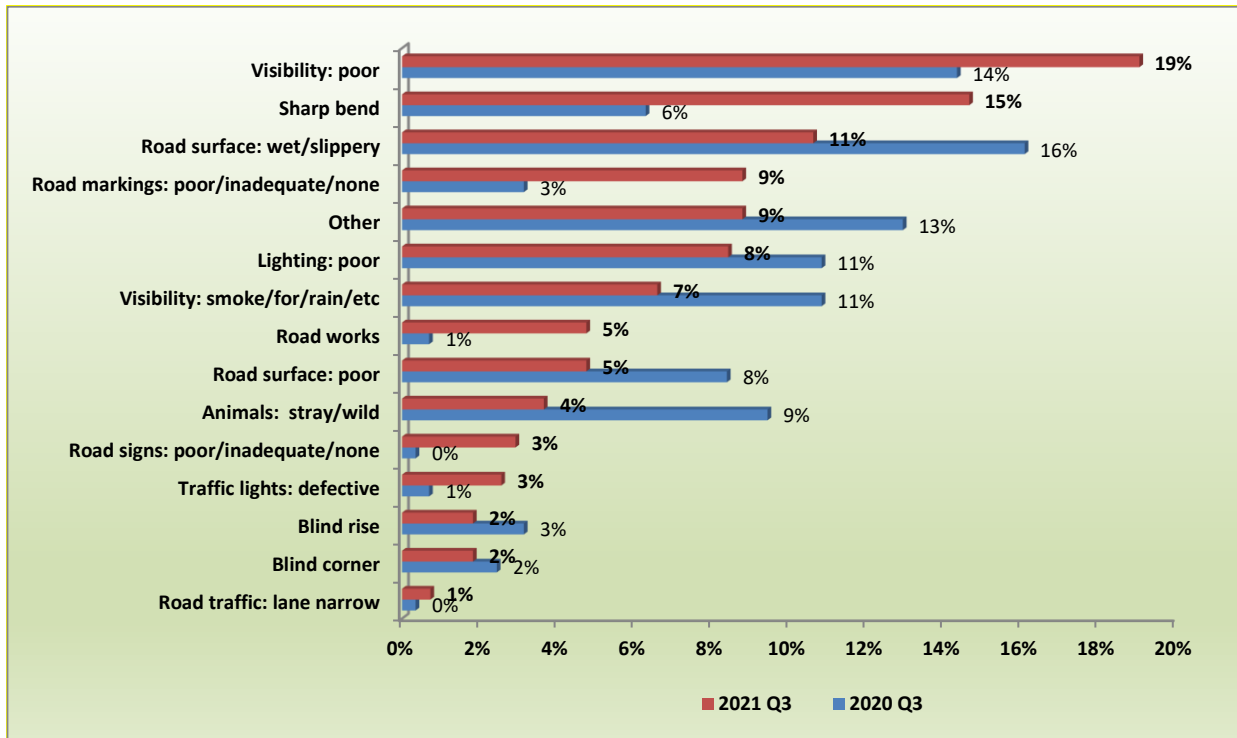


Figure 8: Percentage distribution of road and environmental factors

The figure above depicts that most fatal crashes occurred because of poor visibility and sharp bend. An increase of 9% has been recorded for sharp bend whilst an increase of 5% has been recorded for poor visibility.

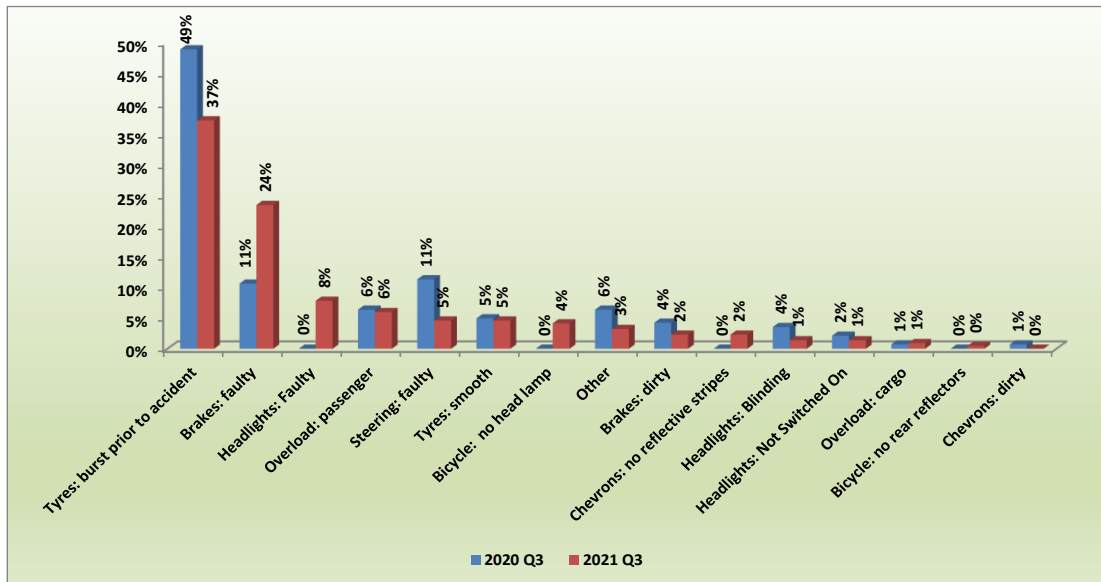


Figure 9: Percentage distribution for vehicle factor

The figure above shows that most crashes occurred because of a tyre burst prior to accident with a contribution of 37% in 2021 as compared to 49% in 2020 which shows a significant decrease of 12%. Undesirably, the brakes being faulty increased by 13%.

3. ROAD FATALITIES

The section covers the data in relation to road fatalities. Fatalities are defined as when a person or persons that are killed during or immediately after a crash, or death within 30 days after a crash happened as a direct result of such a crash. The section will encompass the number of fatalities and percentage distribution per road user, gender, race and per age.

3.1 Number of fatalities per province

Number of Fatalities per Province										
Quarter 3	EC	FS	GP	KZN	LI	MP	NC	NW	WC	RSA
Oct -Dec 2020	485	259	643	655	416	344	93	237	270	3 402
Oct - Dec 2021	420	235	726	695	388	370	129	280	394	3 637
Change	-65	-24	83	40	-28	26	36	43	124	235
% Change	-13	-9	13	6	-7	8	39	18	46	7

Table 2: Comparison of fatalities per province for the two quarters

The table above shows a comparison of fatalities per province for the two quarters in 2020 and 2021. An increase in the number of fatalities is depicted from 3 402 in 2020 to 3 637 in 2021 which resulted in an increase of 7% nationally. Provincially, only three (3) provinces recorded a decrease whilst six (6) of the provinces recorded an increase in this regard. The provinces with the highest percentage changes are Western Cape with 46%, followed by Northern Cape with 39%.

3.2 Number of Fatalities per Road User Group

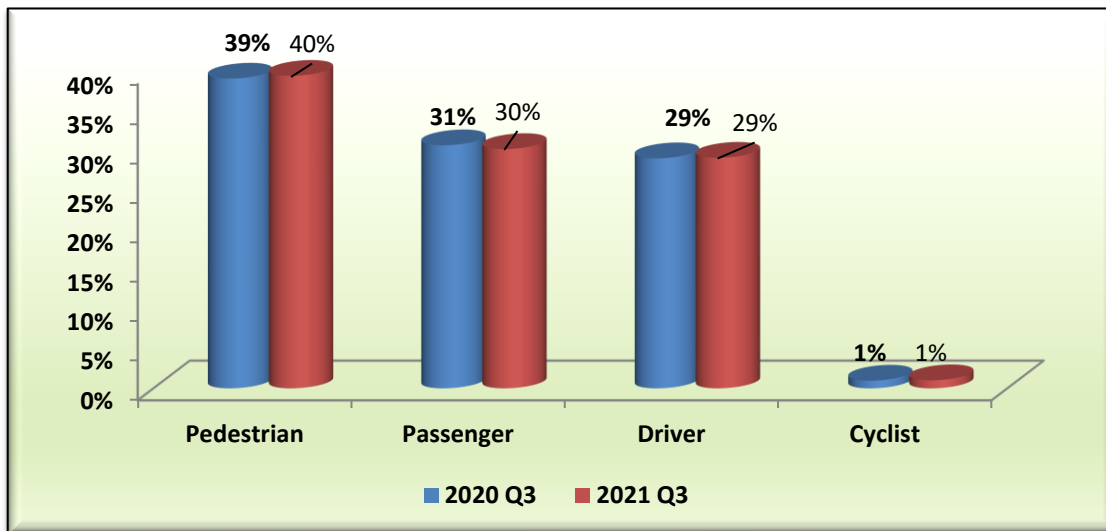


Figure 10: Percentage distribution of fatalities per road user

The percentage distribution of fatalities per road user groups are reflected in the figure above. Pedestrians' fatalities remain a challenge for the country. A contribution of 40% has been recorded for pedestrians followed by passengers with a contribution of 30% in 2021. A slight increase of 1% has recorded for pedestrians and a slight decrease of 1% for passengers.

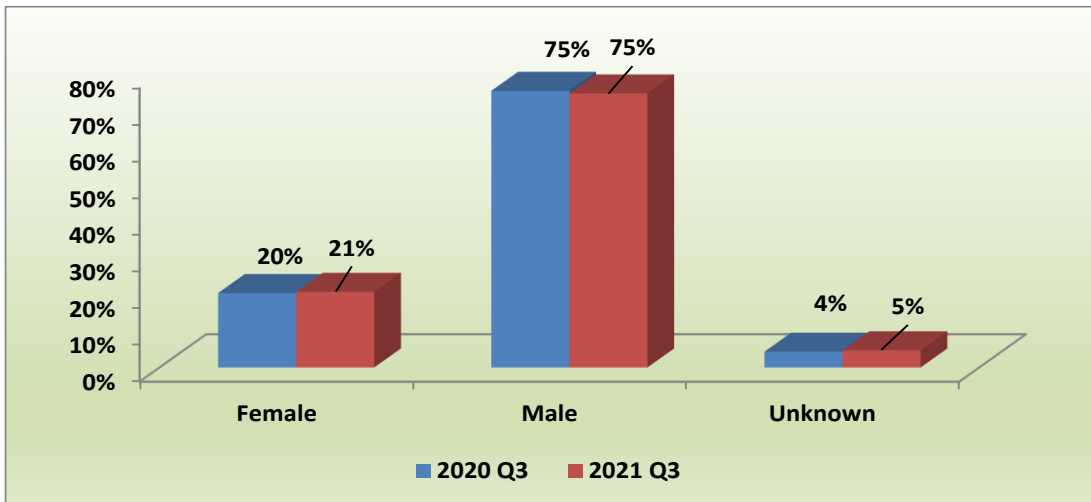


Figure 11: Percentage distribution of fatalities per gender

The figure above depicts trends for fatalities per gender for the two quarters in 2020 and 2021. The male's contribution remains high compared to the female's contribution. However, there a slight increase of 1% for females.

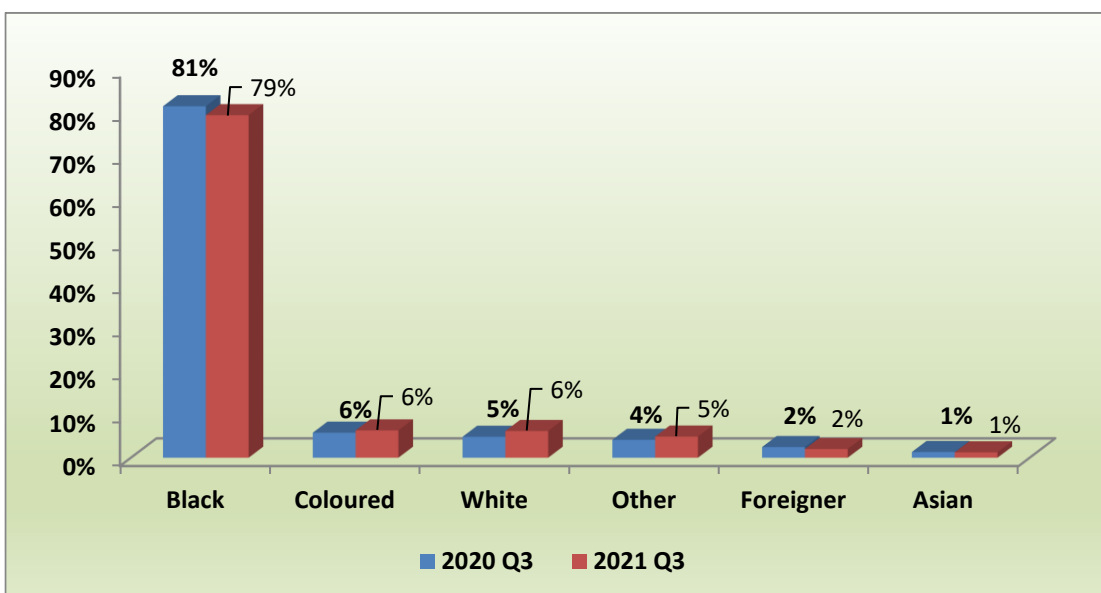


Figure 12: Percentage distribution of fatalities per race

The figure above shows that fatalities relating to blacks are very high in comparison to the other races. At least there is a slight decrease for the black race of 2%. Despite the 2% reduction for the blacks this race category remains high. Other races remain below 10% for the two periods under review.

3.3 Fatalities per Road user group and age group

The figures below provide information regarding the fatalities per age and per road user type for the period October to December 2020 and 2021. The information is categorised per road user group (Driver, Passenger, Pedestrian and Cyclists).

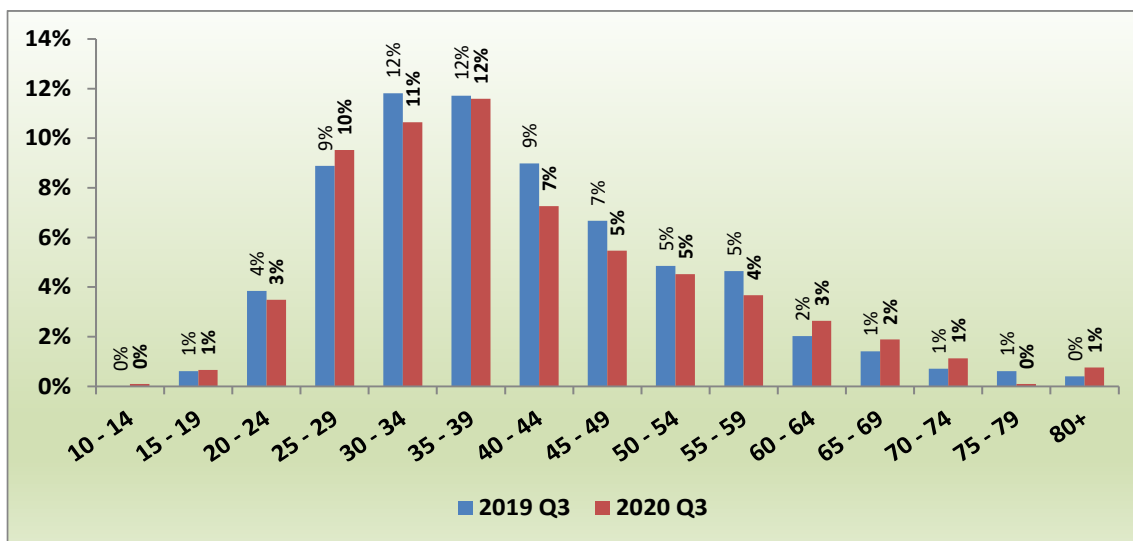


Figure 13: Percentage distribution of fatalities per age for drivers

The figure above shows that the highest fatalities for drivers were recorded from age group 25 to 44 years during 2020 and 2021. The age group between 30 – 34 and 35 – 39 remains to be the highest with more than 10% per year. Although a slight decrease of 1% has been recorded for age group between 30 – 34.

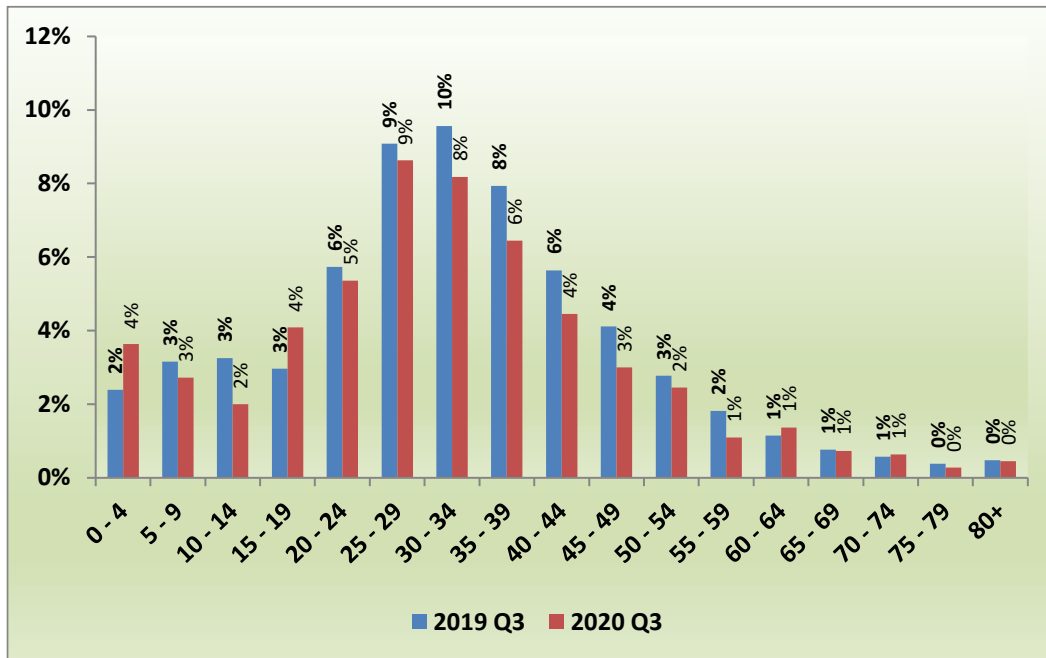


Figure 14: Percentage distribution of fatalities per age for passengers

The figure above indicates that most fatalities for passengers were recorded between age group 20 to 44 years for the two years. However, there are slight decreases for the same age intervals mentioned above. There are few age group intervals that have recorded a decrease for passengers.

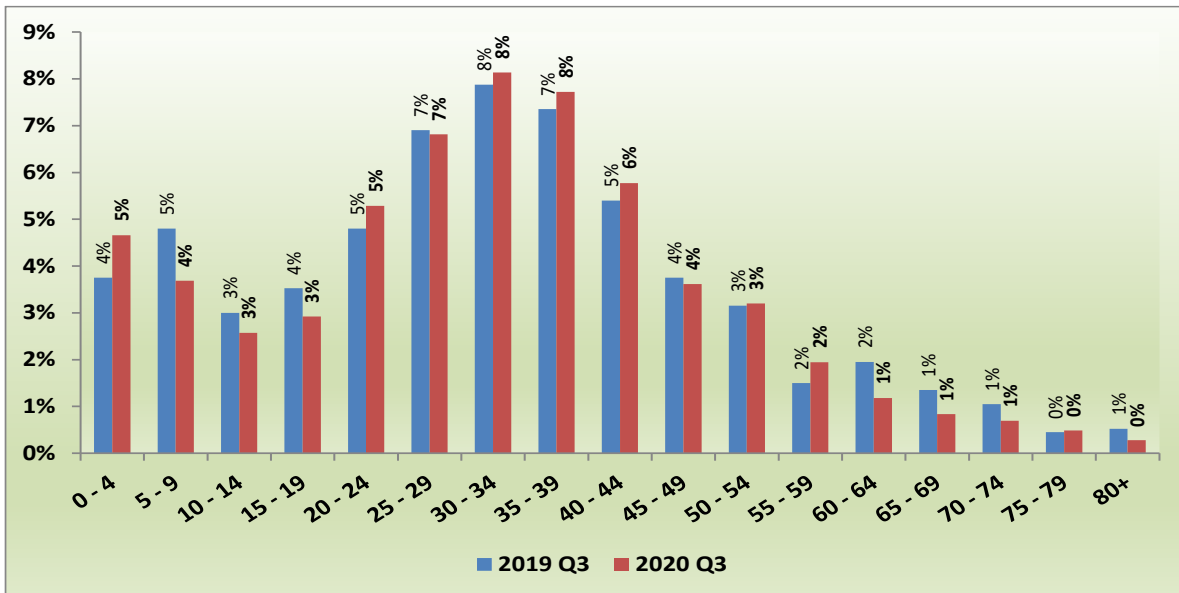


Figure 15: Percentage distribution of fatalities per age for pedestrians

The figure above indicates that most fatalities for pedestrians were recorded between the ages 20 to 44 years. The top three (3) being between 25 to 39 years of age. The highest recorded between age group 30 – 34 for both years.

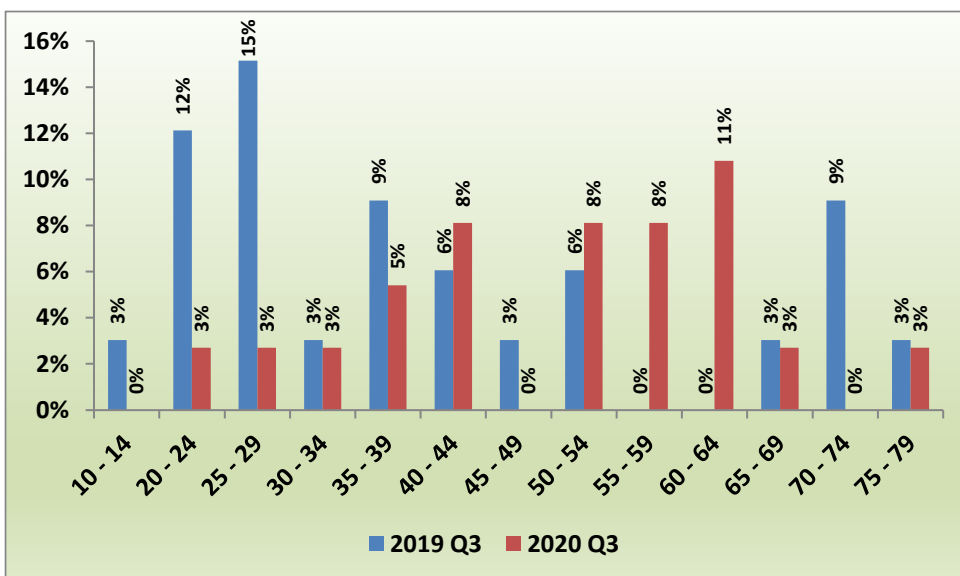


Figure 16: Percentage distribution of fatalities per age for cyclists

The figure above indicates that most fatalities for cyclists were recorded between age groups 60 - 64 years with 11% in 2021. Whilst the highest for 2020 was recorded between age group 25 - 29 years. Comparing the two quarters, most fatalities we recorded on the left of the graph whilst for 2021 were recorded towards the right.

4. MAJOR CRASHES INVESTIGATED

This section provides for all the major crashes for the period under review. Major crashes are defined as Crashes where five (5) or more people died, Crashes involving vehicles carrying dangerous goods/ hazardous chemicals where there is a fatality and a spillage of the dangerous goods/ hazardous chemicals and lastly any crash that the Corporation deems necessary to investigate.

4.1 Number of major crashes

The table and figure provide the number of major crashes investigated in line to the three categories namely: major fatal crashes, fatalities and injuries sustained during the quarter. A total number of thirty-nine (39) fatal crashes, two-hundred and forty (240) fatalities and two-hundred and sixty-one (261) injuries were recorded for the period under review (2021/2022).

Year	Major Crashes	Number of Fatalities	Number of injured	RSA
2020/2021	27	171	95	293
2021/2022	39	240	261	540
Change	12	69	166	247
% Change	44	40	175	84

Table 3: Number of major crashes, fatalities, and injuries for two years

Comparing the two quarters on a percentage basis, an increase of 44% has been recorded for major crashes, whilst a 40% increase has been recorded for number of fatalities and 175% for victims injured.

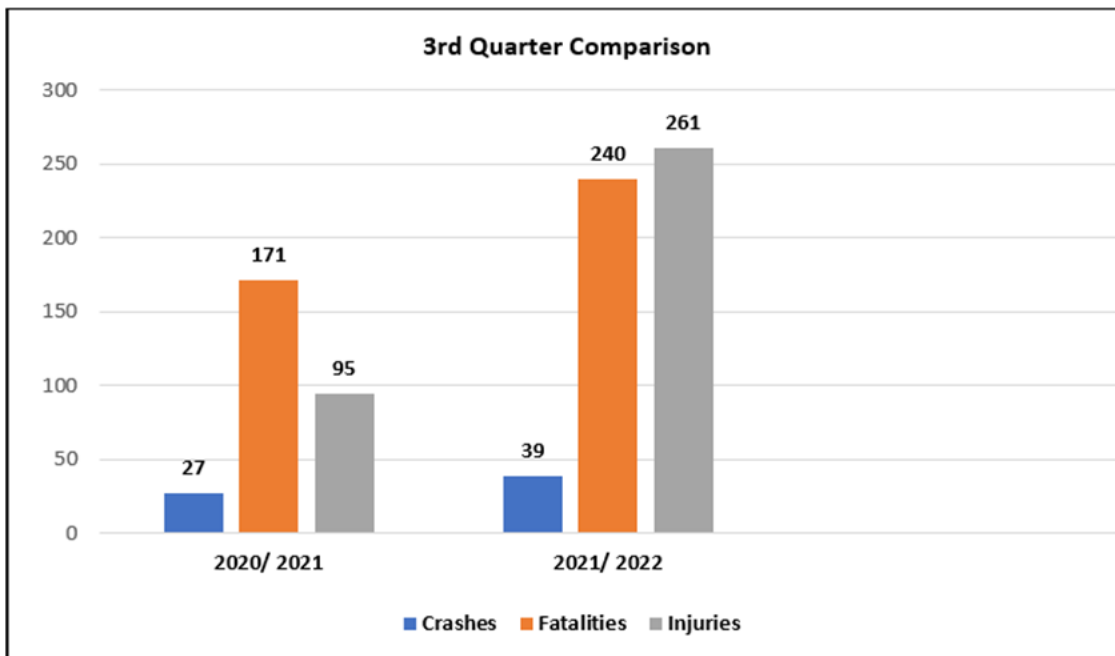


Figure 17: Number of major crashes, fatalities, and injuries

The figure below indicates the distribution of major crashes per province during the two quarters. The highest number of major crashes were investigated in the following Provinces during 2021/2022:

- Kwazulu-Natal Province (7).
- Mpumalanga Province (7); and
- Limpopo Province (6)

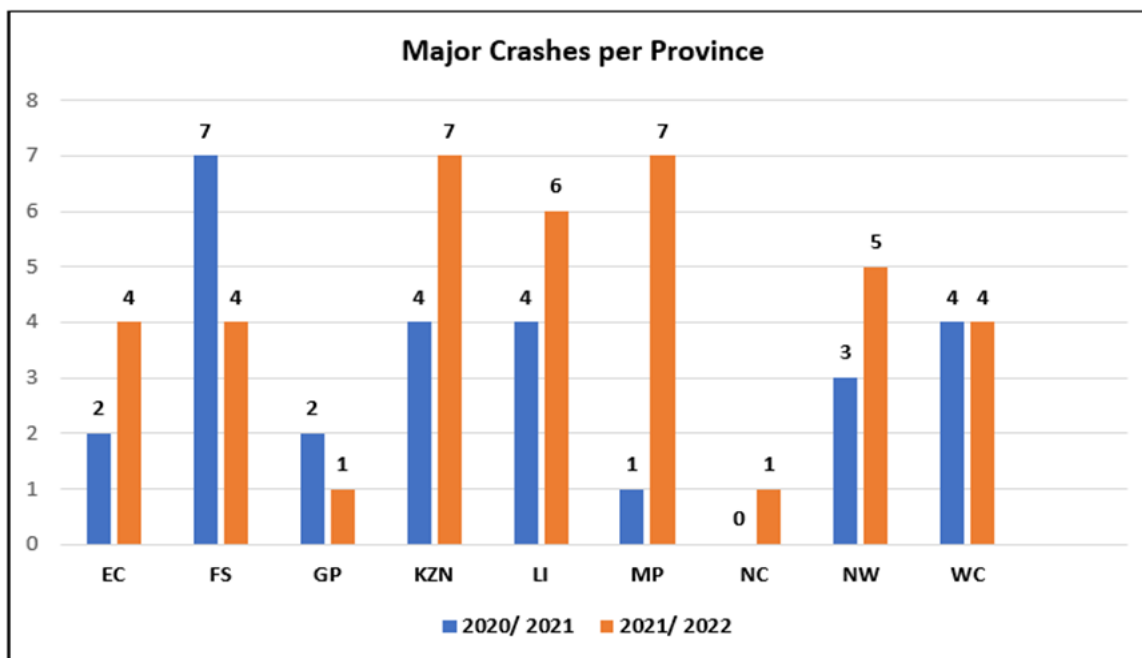


Figure 18: Comparative view of the number of major crashes per province

The figure below indicates the distribution of fatalities per province during the two quarters. The highest number of fatalities from the major crashes were recorded in the following Provinces:

- Mpumalanga Province (44- with a severity rate of 6.3 fatalities per crash)
- Kwazulu-Natal Province (42- with a severity rate of 6 fatalities per crash)
- Limpopo Province (34- with a severity rate of 5.7 fatalities per crash)

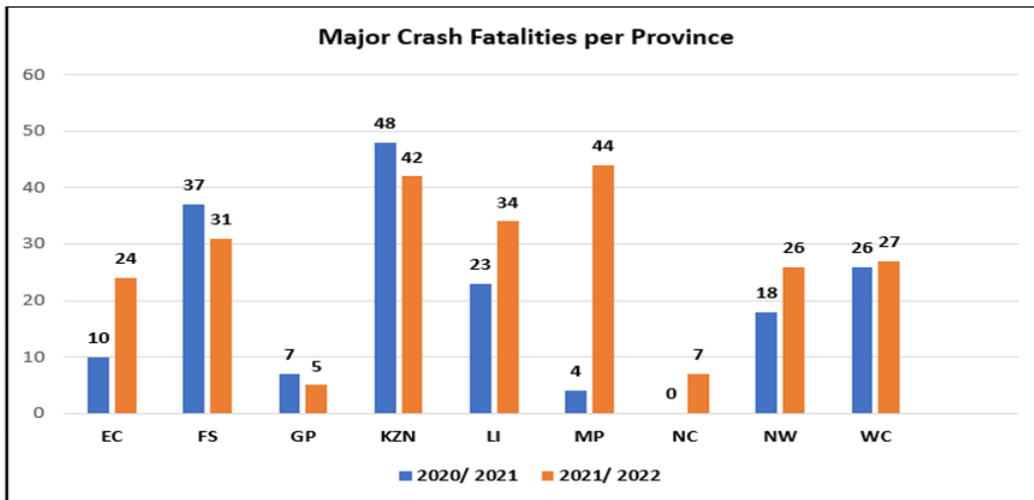


Figure 19: Comparative view of the fatalities from major crashes per province

4.2 Crash Types

The figure below depicts the crash types that were recorded during the period under review. Most crashes occurred because of head-on and multi vehicles being involved during 2021/2022. The absolute figures indicate a significant increase from 7 to 16 times for Head-on whilst single multi vehicle increased from 3 to 8.

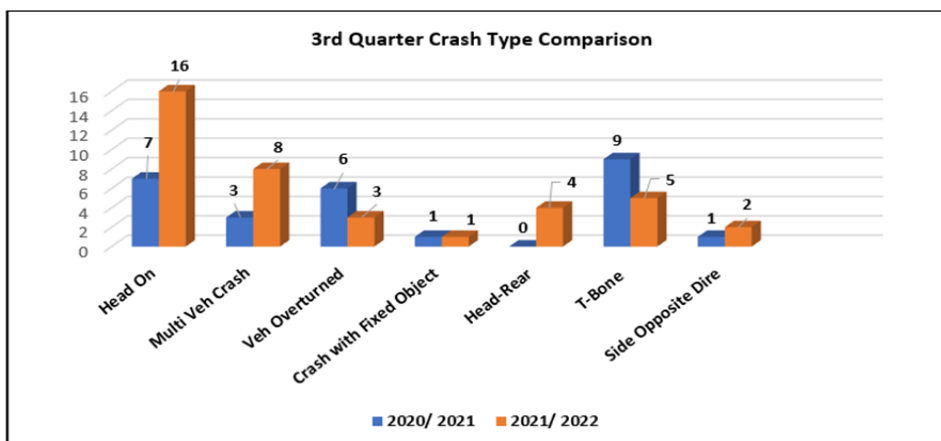


Figure 20: Major crashes per crash types

4.3 Vehicle Involved in Major Crashes

The figure below depicts a comparative view of vehicle types involved in the major crashes reported and investigated during the period under review. The Light Motor Vehicles remained to be the most involved vehicle type with 32 times, followed by Light Delivery Vehicles and Trucks with 25 and 16 times respectively during 2021. The top four are LMV, LDV, Trucks and Minibus Taxi.

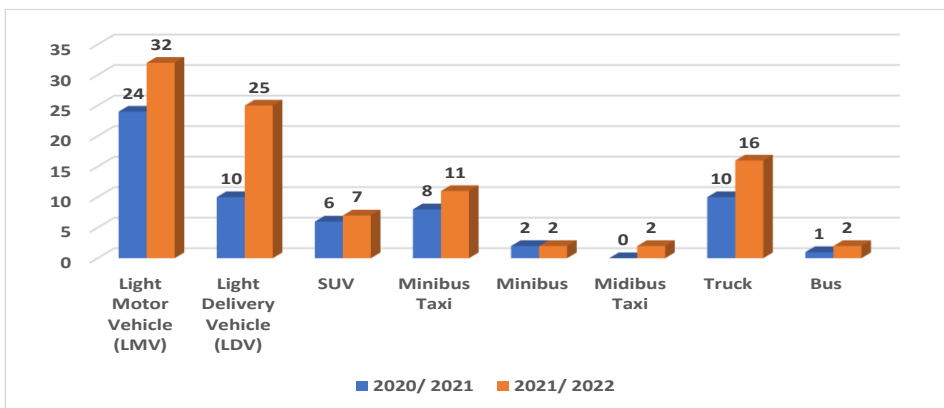


Figure 21: Vehicles involved in major crashes

4.4 Contributory Factors

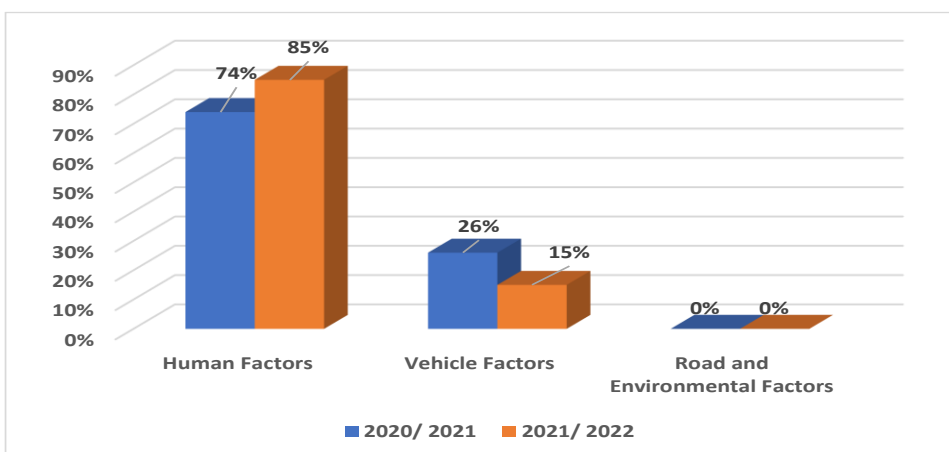


Figure 22: Percentage distribution of the contributory

The figure above provides information for all the contributory factors for the major crashes investigated. Human factors remained to be the major contributor to major crashes for the country with 85% in 2021/2022. A significant reduction has been recorded for vehicle factors from 26% to 15%.

SECTION B

1. INTRODUCTION

The section covers the vehicle population and human mobility data, as well as driver population. The vehicle population data will encompass the number of registered vehicles inclusive of the status of their roadworthiness and licencing, as well as human mobility in terms of the number of persons per vehicle. The driver population data covers the number of registered drivers including the status and categories of licences

2. VEHICLE POPULATION

2.1 Number of Registered Vehicles

The number of registered vehicles increased by 259 475 (2,04%) from 12 697 733 on 31 December 2020 to 12 957 208 vehicles on 31 December 2021. Detail per type of vehicle is given in table below.

Number of Registered Vehicles	Number registered Dec 2020	Number registered Dec 2021	Change	% Change	% of Group Dec 2021	% of Total Dec 2021
Motorised Vehicles						
Motorcars	7 498 920	7 652 045	153 125	2,04	65,25	59,06
Minibuses	341 853	349 671	7 818	2,29	2,98	2,70
Buses	64 888	64 339	-549	-0,85	0,55	0,50
Motorcycles	339 046	347 624	8 578	2,53	2,96	2,68
LDV's - Bakkies	2 616 337	2 671 293	54 956	2,10	22,78	20,62
Trucks	377 787	389 112	11 325	3,00	3,32	3,00
Other & Unknown	248 380	252 392	4 012	1,62	2,15	1,95
Total Motorised	11 487 211	11 726 476	239 265	2,08	100,00	90,50
Caravans	97 913	97 824	-89	-0,09	7,95	0,75
Heavy Trailers	209 400	221 267	11 867	5,67	17,98	1,71
Light Trailers	888 507	897 181	8 674	0,98	72,90	6,92
Other & Unknown	14 702	14 460	-242	-1,65	1,17	0,11
Total Towed	1 210 522	1 230 732	20 210	1,67	100,00	9,50
All Vehicles	12 697 733	12 957 208	259 475	2,04		100,00

Table 4: Number of registered vehicles per type

The table above shows that on a percentage basis the highest change within the motorized category was recorded for trucks with a change of 3% from 377 787 in 2020 to 389 112 in 2021. The motorcycle became the second highest with an increase 2,53%.

The monthly percentage change over the past year for motorised vehicles are shown in the figure below.

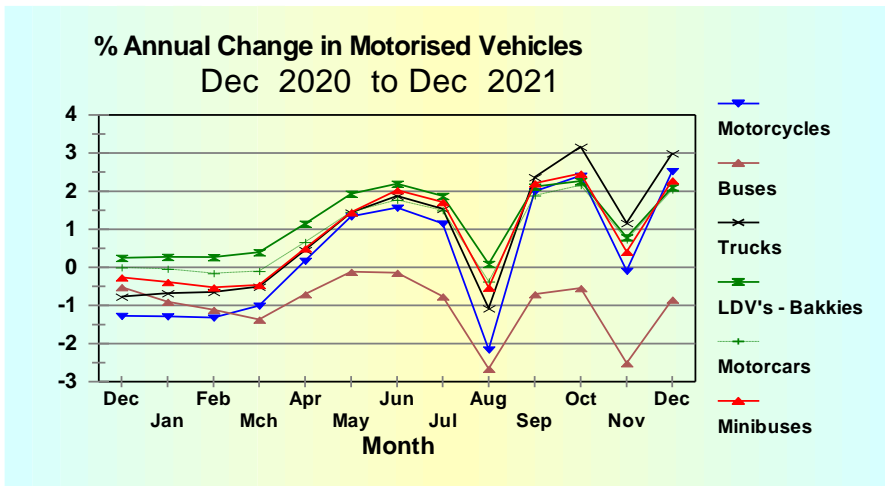


Figure 23: Percentage Annual Growth in Vehicles

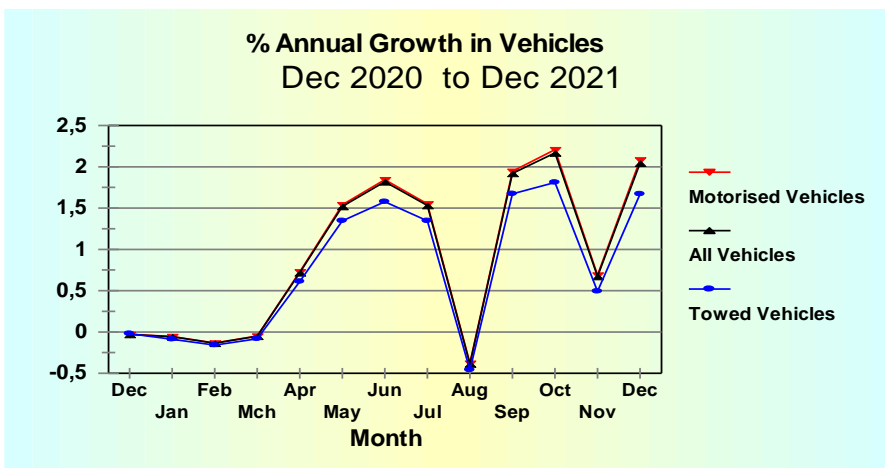


Figure 24: Percentage Annual Growth in Vehicles

The total motor vehicle population per Province for December 2020 and December 2021 respectively, is given in table and reflected in the figure below.

Number of Registered Vehicles per Province	Number registered Dec 2020	Number registered Dec 2021	Change	% Change	% of Total Dec 2021
Gauteng	4 860 348	4 964 003	103 655	2,13	38,31
KwaZulu-Natal	1 699 515	1 735 994	36 479	2,15	13,40
Western Cape	2 050 116	2 086 956	36 840	1,80	16,11
Eastern Cape	848 673	865 899	17 226	2,03	6,68
Free State	640 207	649 808	9 601	1,50	5,02
Mpumalanga	919 594	930 907	11 313	1,23	7,18
North West	641 244	658 540	17 296	2,70	5,08
Limpopo	749 715	771 272	21 557	2,88	5,95
Northern Cape	288 321	293 829	5 508	1,91	2,27
RSA	12 697 733	12 957 208	259 475	2,04	100

Table 5: Number of registered vehicles per province

The number of registered vehicles per province show the highest increase recorded for Limpopo with an increase of 2,88% from 749 715 in 2020 to 771 272 in 2021 followed by North West, with an increase of 2.70%.

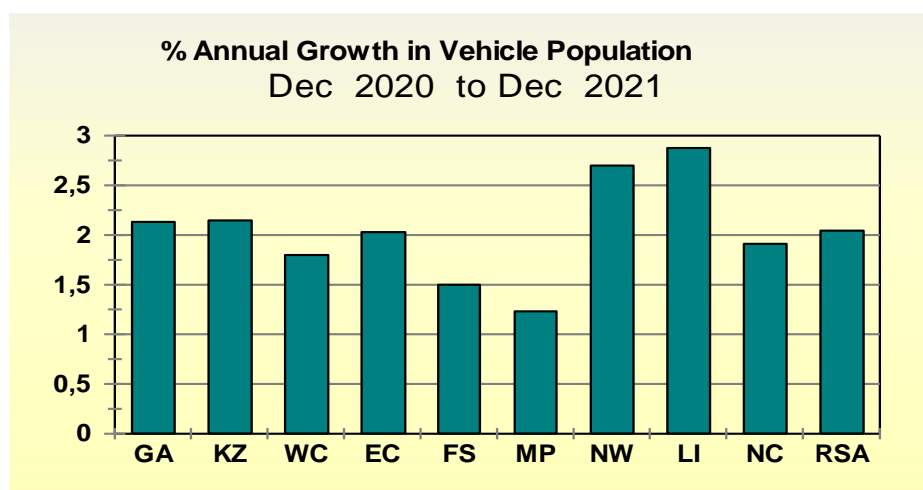


Figure 25: Percentage Annual Growth in Vehicle Population

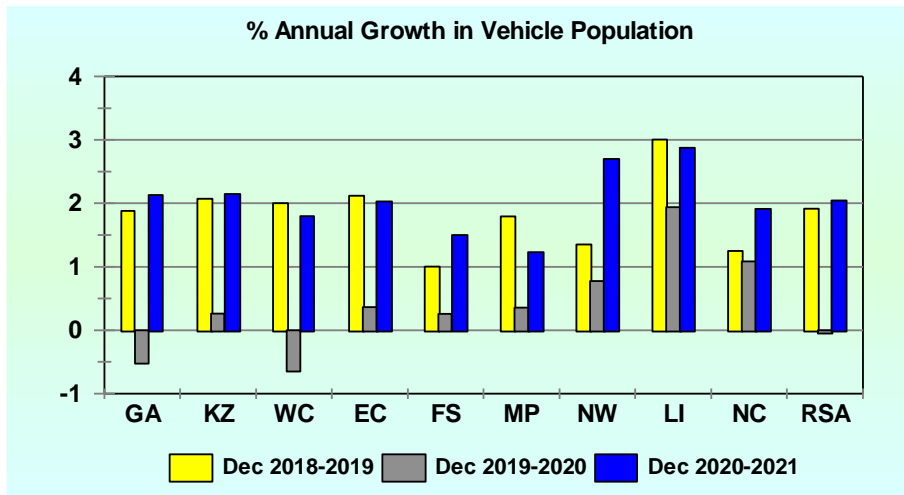


Figure 26: Percentage Annual Growth in Vehicle Population

Over the past year from December 2020 to December 2021 the highest percentage growth in total vehicles were recorded in Limpopo and North West. Amongst others Gauteng and KwaZulu Natal have recorded a slight increase in this regard.

The percentage vehicles registered per province as on 31 December 2021 is reflected in the figure below.

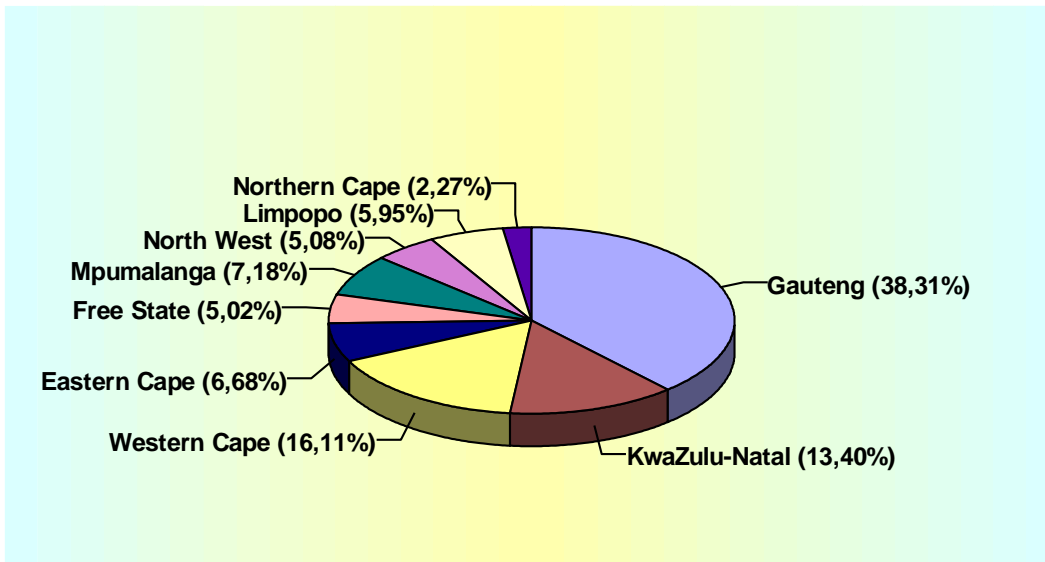


Figure 27: Percentage Vehicles Registered per Province

The information in the figure above shows that 38,31% of all vehicles were registered in Gauteng; about 16,11% in Western Cape and 13,40% in Kwa-Zulu Natal.

More detailed information on the number of vehicles per type registered per Province for December 2020 and December 2021 is given in the table under **Appendix A**.

2.2 Human Population and Mobility

The estimated human population for each year from 2018 to 2021 is given in table below. (These figures are estimates from the mid-year estimates released annually by Stats SA).

Month	Province									Total
	GA	KZ	WC	EC	FS	MP	NW	LI	NC	RSA
Dec 2018	14,50	11,23	6,57	6,51	2,91	4,48	3,92	5,79	1,22	57,12
Dec 2019	14,95	11,34	6,73	6,62	2,92	4,56	4,00	5,89	1,24	58,25
Dec 2020	14,86	11,72	6,76	7,20	2,94	4,63	3,99	6,13	1,26	59,47
Dec 2021	14,68	12,28	6,72	7,76	3,00	4,70	3,98	6,33	1,26	60,72

Table 6: Estimated mid-month human population per province - million

Based on the information on human and vehicle populations, the average number of persons per vehicle per Province (excluding trucks, towed vehicles and "other" and "unknown" vehicles) at the end of December 2018, 2019, 2020 and 2021 is shown in the table and reflected in the figure below.

Month	GA	KZ	WC	EC	FS	MP	NW	LI	NC	RSA
Dec 2018	3,47	7,67	3,76	9,09	6,04	6,36	7,64	9,48	5,44	5,37
Dec 2019	3,51	7,58	3,79	9,03	5,98	6,31	7,67	9,35	5,48	5,36
Dec 2020	3,50	7,81	3,83	9,79	6,00	6,35	7,57	9,55	5,49	5,48
Dec 2021	3,39	8,01	3,74	10,34	6,06	6,35	7,33	9,58	5,40	5,48

Table 7: Average number of persons per vehicle (excluding trucks, other, unknown and towed vehicles)

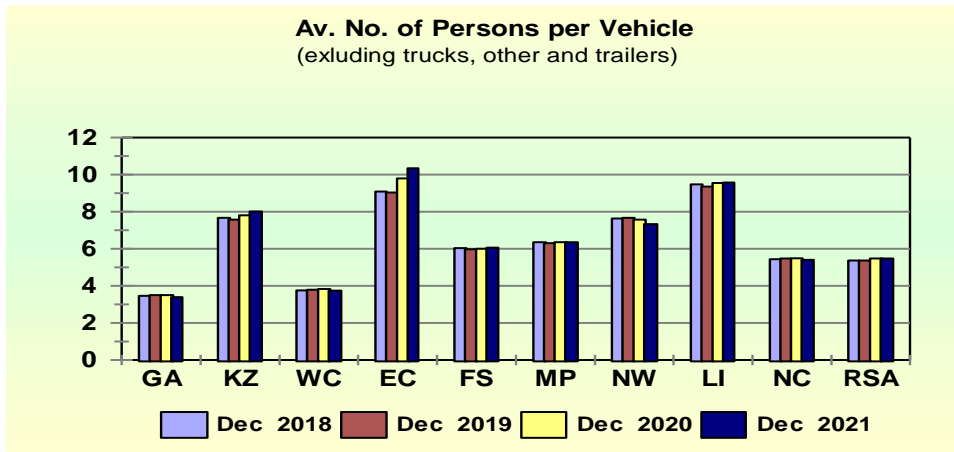


Figure 28: Average number of persons per vehicle (excluding trucks, other and trailer)

The percentage annual change or improvement in human mobility per province is reflected in table below.

Month	Province										Total RSA
	GA	KZ	WC	EC	FS	MP	NW	LI	NC		
Dec 2018-2019	-1,06	1,26	-0,70	0,62	0,94	0,76	-0,36	1,35	-0,66	0,10	
Dec 2019-2020	0,16	-3,05	-1,12	-8,34	-0,38	-0,70	1,28	-2,08	-0,21	-2,09	
Dec 2020-2021	3,24	-2,64	2,23	-5,64	-0,90	0,00	3,11	-0,32	1,63	-0,03	

Table 8: Percentage improvement in mobility per province

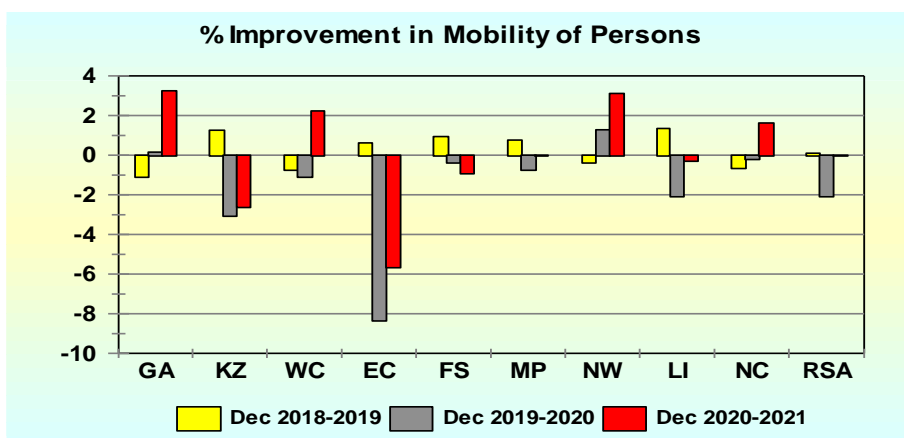


Figure 29: Percentage improvement in mobility of persons

The information in tables and figures above shows that on a national basis the general overall mobility in terms of the number of persons per road vehicle (vehicles that can reasonably transport passengers – motorcars, minibuses, buses, motorcycles and LDV’s “bakkies”), improved by -2.09% from a national average of 5.36 persons per vehicle at the end of December 2019 to 5.48 persons per vehicle at the end of December 2020. Whilst from the end of December 2020 to December 2021 slight decrease of -0.03% has been recorded in this regard.

Although they do show some improvement, the “least mobile” Provinces remain Eastern Cape with 10.34 persons per vehicle; followed by the Limpopo with 9.58 persons per vehicle at the end of December 2021. The “most mobile” Provinces are Kwa-Zulu Natal and the North West with an average of 8.01 and 7.33 persons per vehicle respectively at the end of December 2021.

The average number of persons per “heavy” road passenger transport vehicle (buses and minibuses) is shown in table below and reflected in the figure below.

Month	GA	KZ	WC	EC	FS	MP	NW	LI	NC	RSA
Dec 2018	98	178	149	225	182	138	165	187	169	145
Dec 2019	98	174	148	218	178	134	163	181	163	143
Dec 2020	100	177	151	237	179	135	161	185	161	146
Dec 2021	97	183	151	245	183	135	155	184	153	147

Table 9: Average number of persons per “heavy” passenger transport vehicle (buses and minibuses)

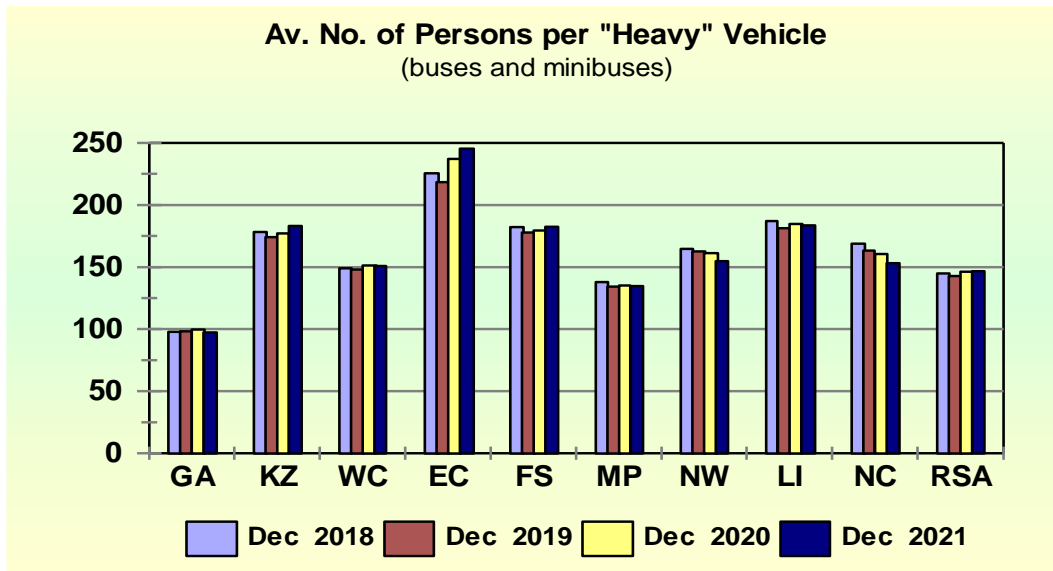


Figure 30: Average number of persons per " heavy vehicles" (buses and minibuses)

The percentage annual change or improvement in the number of persons per "heavy" passenger road transport vehicle per province is reflected in the table below.

Month	Province									Total RSA
	GA	KZ	WC	EC	FS	MP	NW	LI	NC	
Dec 2018-2019	-0,58	2,28	0,64	3,11	2,37	2,73	1,13	3,12	3,25	1,35
Dec 2019-2020	-1,23	-1,71	-2,26	-8,52	-0,92	-0,77	0,89	-1,87	1,68	-2,40
Dec 2020-2021	2,28	-3,29	0,43	-3,47	-1,71	0,31	4,09	0,57	4,68	-0,30

Table 10: Percentage improvement on average number of persons per "heavy" passenger transport vehicles (buses and minibuses)

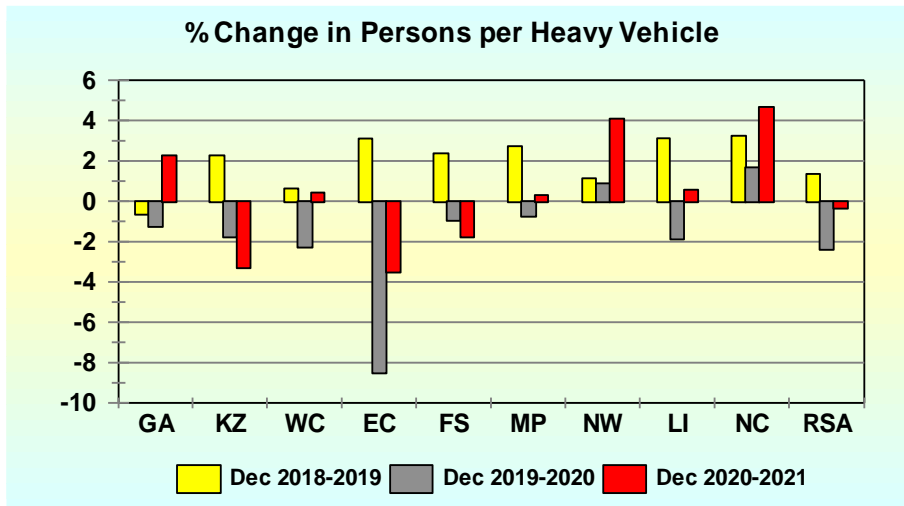


Figure 31: Average number of persons per " heavy vehicles" (buses and minibuses)

The information in tables and figure above show that, since the previous year-on-year improvement, the national overall mobility and quality of public road transport in terms of the number of persons per "heavy" passenger road transport vehicle from December 2019 to 2020 improved by -0,30%.

On a Provincial percentage basis, the highest improvement was in the Eastern Cape where the average number of persons per vehicle changed by -3.47% from about 237 persons per vehicle in December 2020 to 245 persons per vehicle at the end of December 2021. In KwaZulu Natal, the improvement was -3,29%.

The average number of “heavy” road passenger transport vehicle (buses and minibuses) per 10,000 human population per Province is shown in the table below and reflected in the figure below.

Month	GA	KZ	WC	EC	FS	MP	NW	LI	NC	RSA
Dec 2018	102	56	67	44	55	73	61	53	59	69
Dec 2019	102	57	68	46	56	75	61	55	61	70
Dec 2020	100	56	66	42	56	74	62	54	62	68
Dec 2021	103	55	66	41	55	74	65	54	65	68

Table 11: Average number of public transport vehicles (buses and minibuses) per 10,000 human population

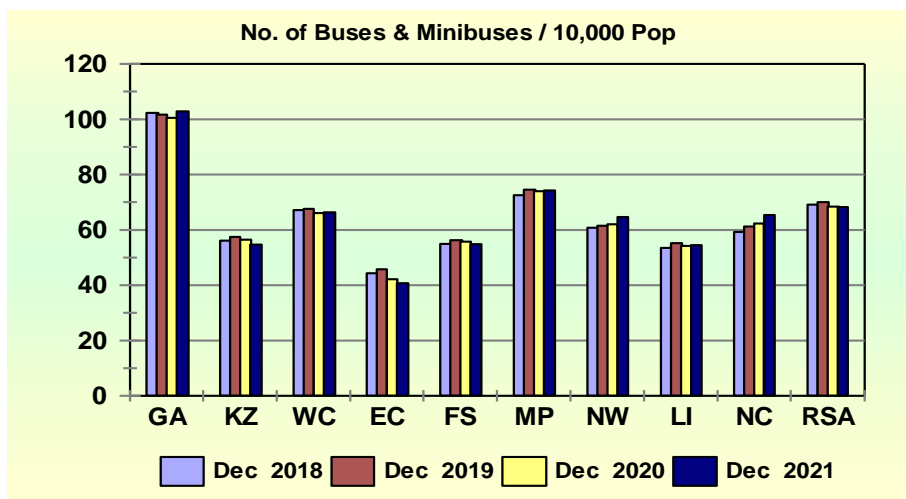


Figure 32: Number of buses and minibuses / 10,000 human population

2.3 Un-Roadworthy and Un-Licensed Vehicles

2.3.1 General

Un-roadworthy vehicles is defined as those of which the owners failed to submit the vehicles for compulsory annual roadworthy tests (including buses, minibus taxis and freight transport vehicles) or on change of ownership. Un-licensed vehicles are those of which the owners failed to renew the vehicle licences within the time frame allowed.

On a national basis the total number of vehicles that are either un-roadworthy, un-licensed or both decreased by 50 270 (-3.27%) from 1 537 634 vehicles as on 31 December 2020 to 1 487 364 vehicles as on 31 December 2021. Detail in this regard per type of vehicle is provided in the table below and the percentage (%) change from 2020 to 2021 reflected in the figure below.

Number of Un-Roadworthy, Un-Licensed Vehicles or Both				
Vehicle Type	Dec 2020	Dec 2021	Change	% Change
Motorcars	844 555	731 269	-113 286	-13,41
Minibuses	84 162	73 953	-10 209	-12,13
Buses	15 439	13 672	-1 767	-11,45
Motorcycles	74 933	67 124	-7 809	-10,42
LDV's - Bakkies	260 948	237 314	-23 634	-9,06
Trucks	79 558	74 701	-4 857	-6,10
Caravans	9 452	8 356	-1 096	-11,60
Heavy Trailers	31 777	42 129	10 352	32,58
Light Trailers	97 740	88 133	-9 607	-9,83
Unknown	39 070	150 713	111 643	285,75
All Vehicles	1 537 634	1 487 364	-50 270	-3,27

Table 12: Number of un-roadworthy, un-licensed vehicles or both

An increase has been observed for all vehicle types. The highest percentage change were recorded for motorcars with -13,41%, minibuses with -12,13% and buses with -11,45%.

Detail on the number of vehicles that are either un-roadworthy, un-licenced or both per Province is provided in the table below and the percentage (%) change from 2020 to 2021 reflected in the figure below.

Year	GA	KZN	WC	EC	FS	MP	NW	LI	NC	RSA
Dec 2020	641 395	201 041	200 481	105 985	83 670	111 985	76 945	85 040	31 092	1 537 634
Dec 2021	595 111	190 131	186 093	103 405	96 552	115 936	80 817	87 040	32 279	1 487 364
Change	-46 284	-10 910	-14 388	-2 580	12 882	3 951	3 872	2 000	1 187	-50 270
% Change	-7,22	-5,43	-7,18	-2,43	15,40	3,53	5,03	2,35	3,82	-3,27

Table 13: Number of vehicles that are un-roadworthy or un-licenced or both

The information in tables and figures above shows that most provinces have recorded an increase in this regard. The highest percentage change has been recorded for Gauteng with -7.22% followed by Western Cape with -7.18%.

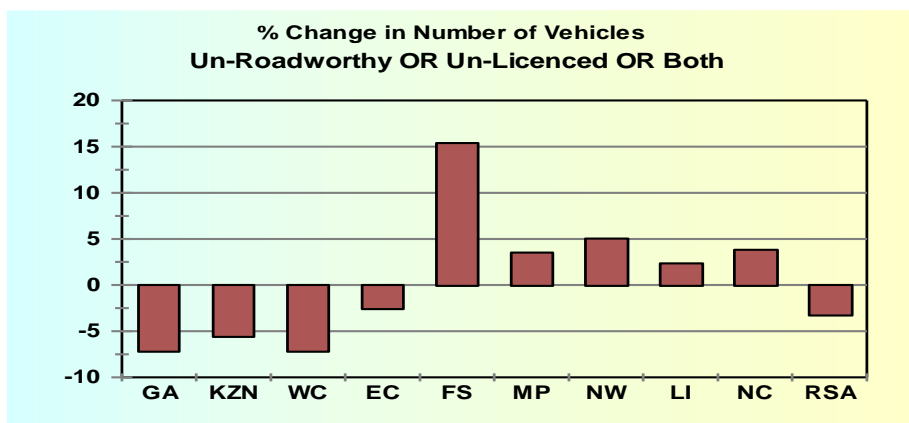


Figure 33: Percentage change in number of vehicles un-roadworthy or un-licensed or both

2.3.2 Number of Un-Roadworthy Vehicles

The number of vehicles that are un-roadworthy (but licenced) increased by 194 102 (32.24%) from 602 085 as on 31 December 2020 to 796 187 vehicles as on 31 December 2021. Detail in this regard is given in the table below and the percentage of un-roadworthy vehicles per type of vehicle, as a percentage of the number registered, is reflected in the figure below.

Number of Un-Roadworthy Vehicles				
Vehicle Type	Dec 2020	Dec 2021	Change	% Change
Motorcars	284 640	318 240	33 600	11,80
Minibuses	46 737	48 450	1 713	3,67
Buses	10 509	10 663	154	1,47
Motorcycles	35 891	40 603	4 712	13,13
LDV's - Bakkies	87 970	104 199	16 229	18,45
Trucks	57 020	58 823	1 803	3,16
Caravans	3 816	4 498	682	17,87
Heavy Trailers	23 745	36 405	12 660	53,32
Light Trailers	29 149	39 693	10 544	36,17
Unknown	22 608	134 613	112 005	495,42
All Vehicles	602 085	796 187	194 102	32,24

Table 14: Number of un-roadworthy vehicles

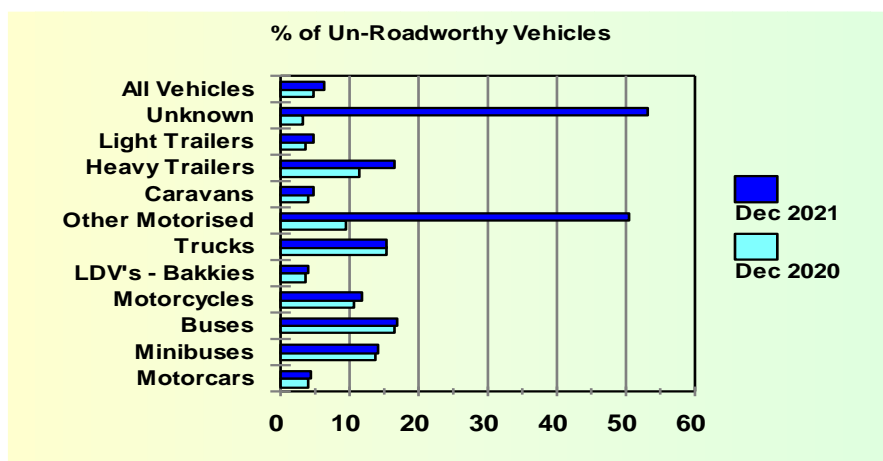


Figure 34: Percentage of un-roadworthy vehicles

The above information shows that all vehicle types have recorded an increase in this regard. The highest increase for un-roadworthy vehicles comparing 2020 and 2021 were recorded for heavy trailers with an increase of 53,32% from 23 745 to 36 405, followed by light trailers and LDV's Bakkie with 36,17% and 18,45% respectively.

Details with regards to the number of vehicles that are un-roadworthy per Province are provided in the table below and the percentage (%) change from 2020 to 2021 reflected in the figure below.

Year	GA	KZN	WC	EC	FS	MP	NW	LI	NC	RSA
Dec 2020	275 934	72 413	69 887	34 868	37 818	42 949	29 700	27 024	11 492	602 085
Dec 2021	327 167	97 879	108 049	46 750	60 358	59 623	43 029	36 357	16 975	796 187
Change	51 233	25 466	38 162	11 882	22 540	16 674	13 329	9 333	5 483	194 102
% Change	18,57	35,17	54,61	34,08	59,60	38,82	44,88	34,54	47,71	32,24

Table 15: Number of un-roadworthy vehicles

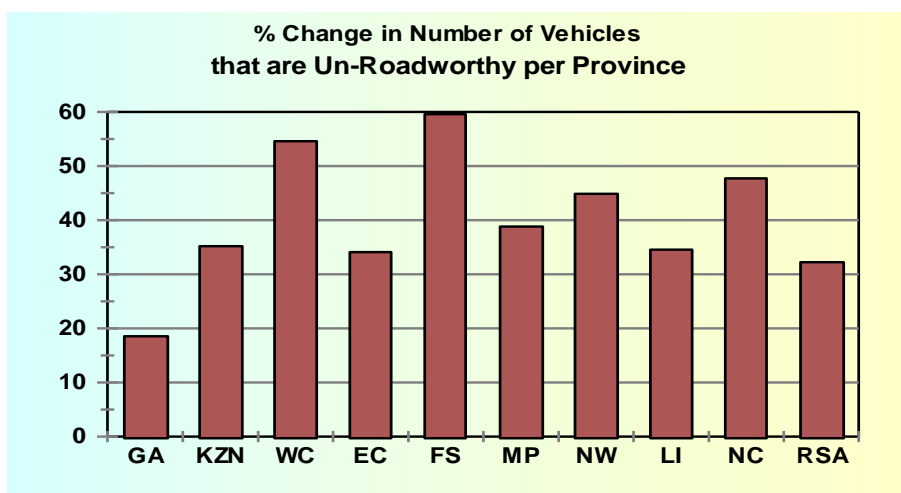


Figure 35: Percentage change in number of vehicles that are un-roadworthy per province

The information in the table and figure above shows that all provinces recorded an increase regarding the number of un-roadworthy vehicles. On a percentage basis the highest increase was recorded in Free State where the number of un-roadworthy vehicles increased by 59,61%, followed by Northern Cape and North West with 47,71% and 44,88% respectively.

The percentage of un-roadworthy vehicles per Province, expressed as a percentage of the total number of vehicles registered per province, is shown in the figure below.

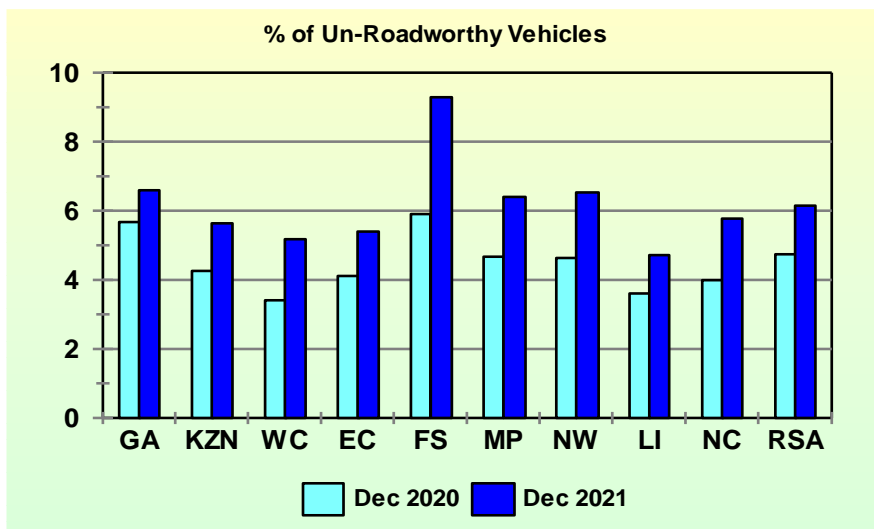


Figure 36: Percentage of un-roadworthy vehicles

2.3.3 Number of Un-Licensed Vehicles

On a national basis the number of un-licensed vehicles decreased by 235 186 (27.35%) from 859 838 vehicles as on 31 December 2020 to 624 652 vehicles as on 31 December 2021.

Detail per type of vehicle in this regard is given in the table below and the percentage of un-licensed vehicles per type of vehicle, as a percentage of the number registered, is reflected in the figure below.

Number of Un-Licensed Vehicles				
Vehicle Type	Dec 2020	Dec 2021	Change	% Change
Motorcars	521 589	380 703	-140 886	-27,01
Minibuses	30 365	20 163	-10 202	-33,60
Buses	3 982	2 216	-1 766	-44,35
Motorcycles	33 404	22 510	-10 894	-32,61
LDV's - Bakkies	160 766	122 801	-37 965	-23,62
Trucks	18 356	12 425	-5 931	-32,31
Caravans	5 170	3 528	-1 642	-31,76
Heavy Trailers	6 807	4 348	-2 459	-36,12
Light Trailers	64 741	45 453	-19 288	-29,79
Unknown	14 658	10 505	-4 153	-28,33
All Vehicles	859 838	624 652	-235 186	-27,35

Table 16: Number of un-licensed vehicles

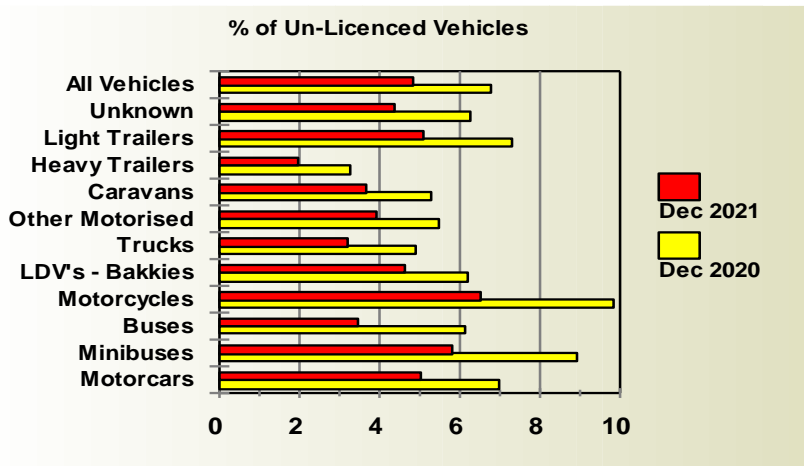


Figure 37: Percentage of un-licensed vehicles

The above information shows that all vehicle recorded a decrease regarding the number of un-licensed vehicles. On a percentage basis the highest increase has been recorded for buses with 44,35% followed by heavy trailers with 36,12% and minibuses with 33,60%.

Detail on the number of vehicles that are un-licensed per Province is provided in the table below and the percentage (%) change from 2020 to 2021 reflected in the figure below.

Year	GA	KZN	WC	EC	FS	MP	NW	LI	NC	RSA
Dec 2020	336 554	119 022	121 040	65 160	40 831	62 858	43 209	53 273	17 891	859 838
Dec 2021	242 951	83 909	70 826	51 062	31 361	50 380	34 077	46 321	13 765	624 652
Change	-93 603	-35 113	-50 214	-14 098	-9 470	-12 478	-9 132	-6 952	-4 126	-235 186
% Change	-27,81	-29,50	-41,49	-21,64	-23,19	-19,85	-21,13	-13,05	-23,06	-27,35

Table 17: Number of un-licensed vehicles

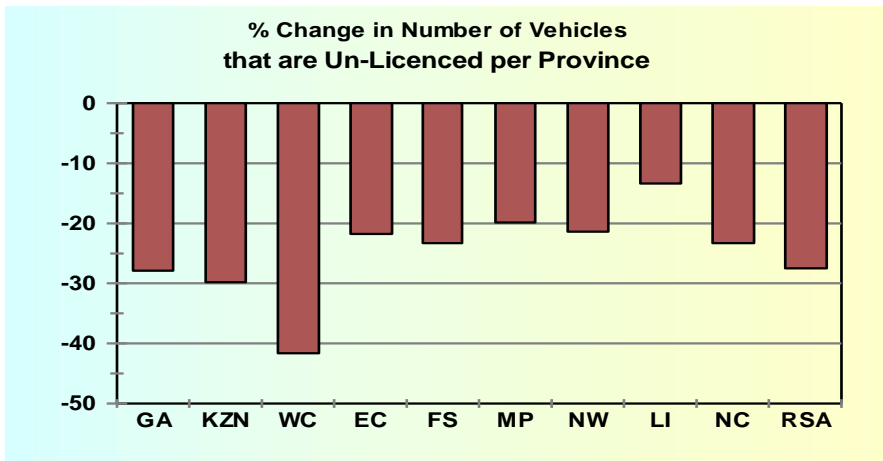


Figure 38: Percentage change in number of un-licensed vehicles per province

The information in the table and figure above shows that all provinces have recorded a decrease with regards to the number of un-licensed vehicles. Western Cape recorded the highest percentage change of 41,49%, followed by KwaZulu Natal and Gauteng with 29,50% and 27,81% respectively.

The percentage of un-licensed vehicles per type of vehicle, as a percentage of the number registered per Province, is reflected in the figure below.

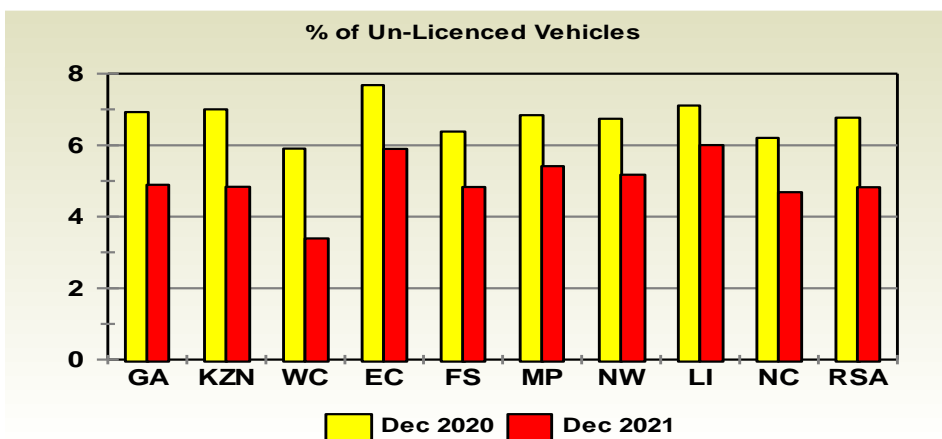


Figure 39: Percentage of un-licensed vehicles

Detailed information on the number of un-roadworthy and un-licensed vehicles per type of vehicle per Province is provided in the tables under **Appendix B**.

3. DRIVER POPULATION

3.1 Learner Driving Licences

The number of learner driving licences issued increased by 131 384 (13.83%) from 950 231 on 31 December 2020 to 1 081 615 on 31 December 2021. Detail on the number of learner driving licences issued per category is given in table below and graphically reflected in the figure below.

Category	Dec 2020	Dec 2021	Change	% Change
1	30 742	32 816	2 074	6,75
2	175 632	191 444	15 812	9,00
3	743 857	857 355	113 498	15,26
Total	950 231	1 081 615	131 384	13,83

Table 18: Number of learner licences issued

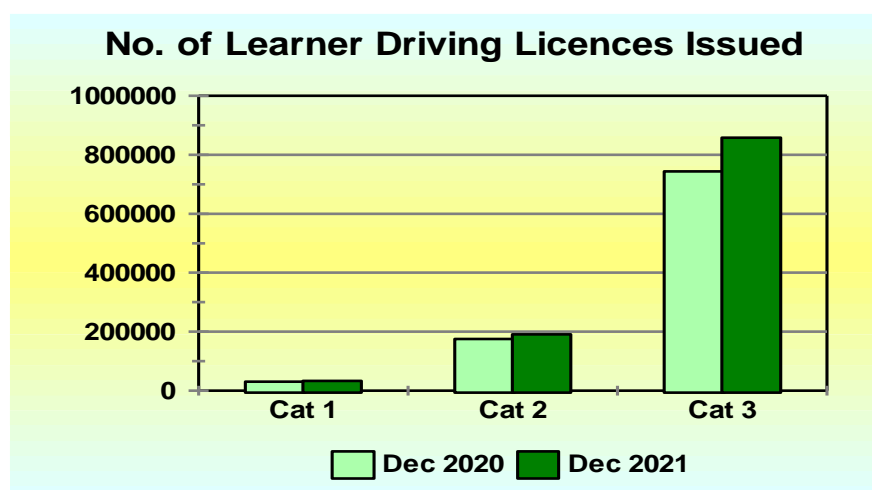


Figure 40: Number of learner licenses issues

Provincial information in this regard is given in the table below and the percentage change per Province over the 12-month period is reflected in the figure below.

Year	GA	KZ	WC	EC	FS	MP	NW	LI	NC	RSA
Dec 2020	299 994	142 975	140 665	78 955	49 743	84 888	51 741	79 166	22 104	950 231
Dec 2021	335 114	171 090	163 225	82 230	52 760	101 305	60 028	91 667	24 196	1 081 615
Change	35 120	28 115	22 560	3 275	3 017	16 417	8 287	12 501	2 092	131 384
% Change	11,71	19,66	16,04	4,15	6,07	19,34	16,02	15,79	9,46	13,83

Table 19: Number of learners licences issued per province

All provinces have recorded an increase with regards to the number of Learner Licences issued. The highest increase was recorded for KwaZulu Natal and Mpumalanga with 19.66% and 19,34% respectively.

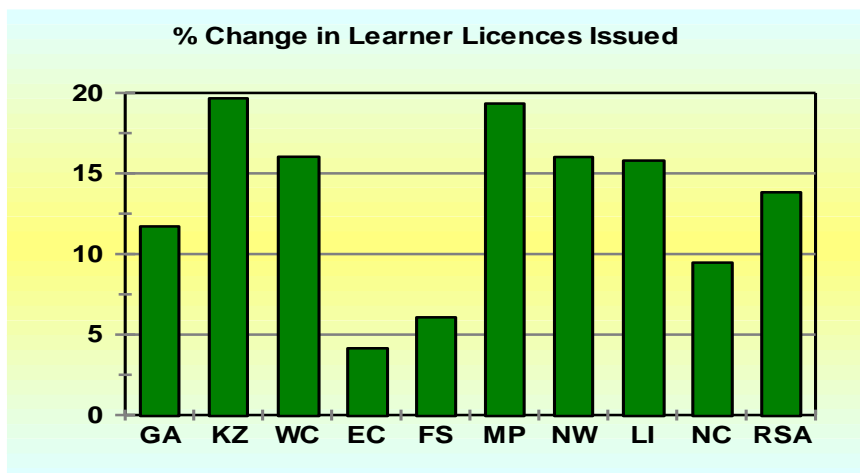


Figure 41: Percentage change in learner licenses issued per province

3.2 Driving Licences Issued and Expired

3.2.1 Number of Driving Licences Issued

The number of driving licences issued increased by 497 413 (3.57%) from 13 918 881 on 31 December 2020 to 14 416 294 as of 31 December 2021. Details on the number of driving licences issued per category is given in table and graphically reflected in the figure below.

Category	Dec 2020	Dec 2021	Change	% Change
A	497 758	504 923	7 165	1,44
A1	122 575	122 513	-62	-0,05
B	3 141 877	3 258 375	116 498	3,71
C	24 501	24 844	343	1,40
C1	4 740 291	5 060 561	320 270	6,76
EB	3 643 811	3 647 457	3 646	0,10
EC	1 164 146	1 214 705	50 559	4,34
EC1	583 922	582 916	-1 006	-0,17
Total	13 918 881	14 416 294	497 413	3,57

Table 20: Number of driving licences issued

Driving licences:

A	Motorcycle > 125 cub.cm	A1	Motorcycle < 125 cub.cm	B	Motor vehicle < 3,5000 kg
C	Motorvehicle > 16,000 kg	C1	Motor vehicle 3,500 – 16,000 kg	EB	Articulated motor vehicle <16,000 kg
		EC	Articulated vehicle > 16,000 kg	EC1	Articulated vehicle 3,500 – 16,000 kg

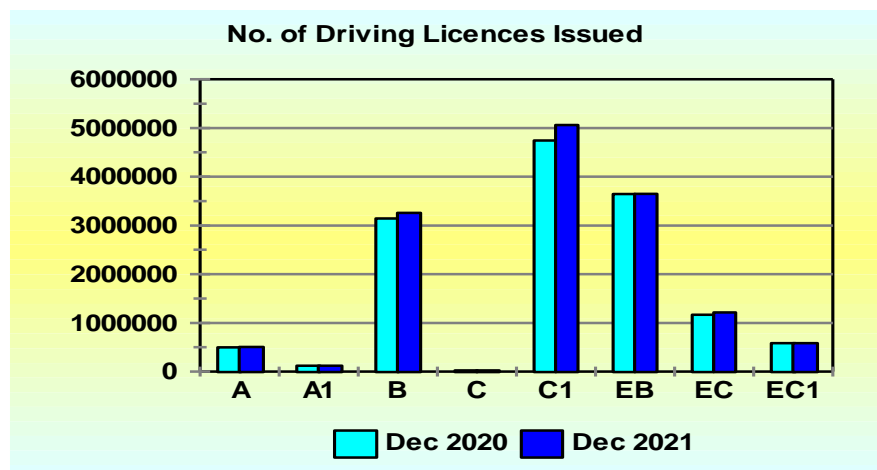


Figure 42: Number of driving licenses issued

The information contained in the table above depict that the highest percentage change remained to be for categories C1, EC, and B with percentages of 6.76%, 4.34% and 3.71% respectively.

The number and percentage (%) of driving licences issued per category at the end of December 2021 is reflected in the table below.

Category	Description	Number	%
A	Motorcycle < 125 cub.cm	504 923	3,50
A1	Motorcycle > 125 cub.cm	122 513	0,85
B	Motor vehicle < 3,5000 kg	3 258 375	22,60
C	Articulated motor vehicle <16,000 kg	24 844	0,17
C1	Motor vehicle 3,500 - 16,000 kg	5 060 561	35,10
EB	Articulated vehicle 3,500 - 16,000 kg	3 647 457	25,30
EC	Motorvehicle > 16,000 kg	1 214 705	8,43
EC1	Articulated vehicle > 16,000 kg	582 916	4,04
Total		14 416 294	100

Table 21: Number and percentage of driving licences issued per category

Provincial information in this regard is given in the table below and the percentage change regarding all licences issued per province is reflected in the figure below.

Year	GA	KZ	WC	EC	FS	MP	NW	LI	NC	RSA
Dec 2020	4 861 245	2 232 743	2 088 886	1 017 559	681 256	1 043 807	652 556	1 083 686	257 143	13 918 881
Dec 2021	5 041 171	2 311 310	2 155 751	1 051 583	699 627	1 088 865	675 490	1 125 903	266 594	14 416 294
Change	179 926	78 567	66 865	34 024	18 371	45 058	22 934	42 217	9 451	497 413
% Change	3,70	3,52	3,20	3,34	2,70	4,32	3,51	3,90	3,68	3,57

Table 22: Number of driving licences issued per province

The information shows that all the provinces have recorded an increase in this regard. The highest percentage change were recorded for Mpumalanga, Limpopo, and Gauteng with the following percentages 4.32%; 3.90% and 3.70% respectively.

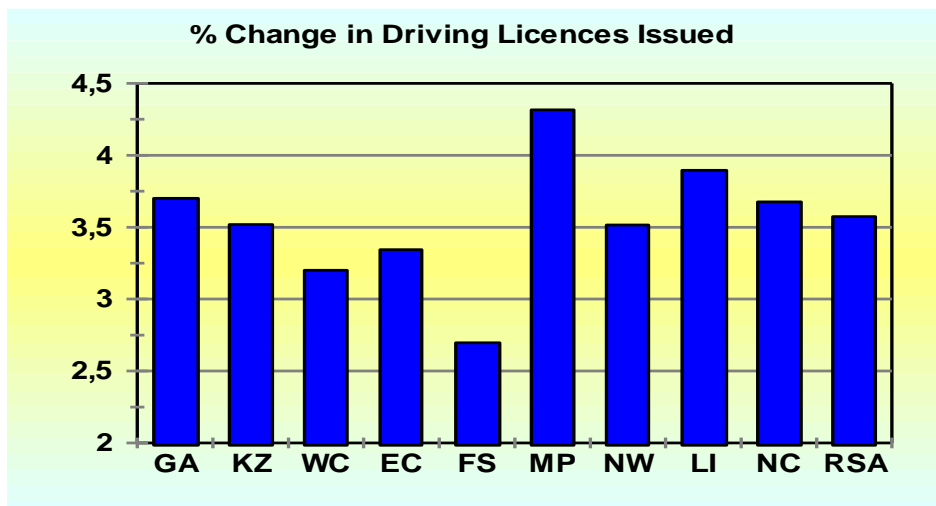


Figure 43: Percentage change in driving licenses issued

3.2.2 Number of Driving Licence Cards Expired

The information in Table below shows that as on 31 December 2021 there were 2 865 091 expired driving licence cards recorded on the National Traffic Information System (NaTIS). This figure represents 19,87% of all driving licences issued. This information is also reflected in the figure below.

Category	GA	KZ	WC	EC	FS	MP	NW	LI	NC	RSA
On system	5 041 171	2 311 310	2 155 751	1 051 583	699 627	1 088 865	675 490	1 125 903	266 594	14 416 294
Not expired	4 084 586	1 816 180	1 741 005	781 492	538 189	895 592	549 676	928 023	216 460	11 551 203
Expired	956 585	495 130	414 746	270 091	161 438	193 273	125 814	197 880	50 134	2 865 091
% Expired	18,98	21,42	19,24	25,68	23,07	17,75	18,63	17,58	18,81	19,87

Table 23: Number of driving licences cards issued and expired per province

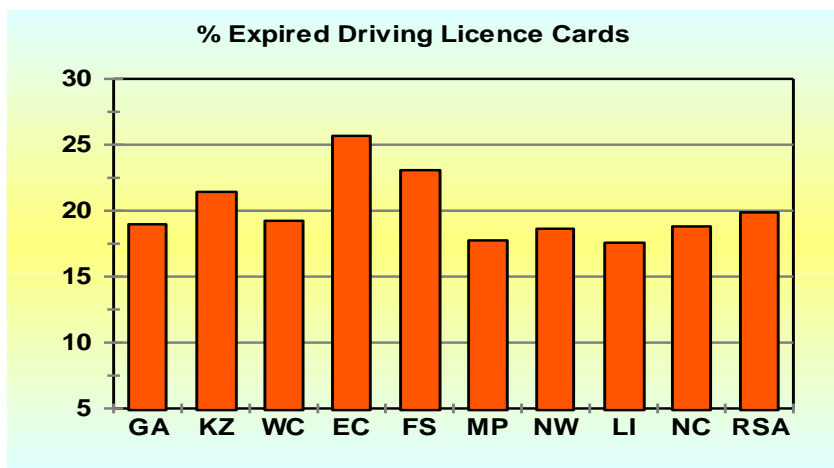


Figure 44: Percentage expired driving license cards

3.3 Professional Driving Permits Issued and Expired

3.3.1 Number of Professional Driving Permits Issued

The number of Professional Driving Permits (PrDP's) issued increased by 100 047 (7,97%) from 1 255 194 on 31 December 2020 to 1 355 241 on 31 December 2021. Detail on the number of PrDPs issued per category is given in table below and graphically reflected in the figure below.

Category	Dec 2020	Dec 2021	Change	% Change
G	8 759	9 172	413	4,72
P G	1 197 376	1 292 660	95 284	7,96
D G	135	164	29	21,48
D P G	48 924	53 245	4 321	8,83
Total	1 255 194	1 355 241	100 047	7,97

Table 24: Number of PrDP's issued

Professional Driving Permits (PrDPs)

G: Goods

P: Passengers

D: Dangerous goods

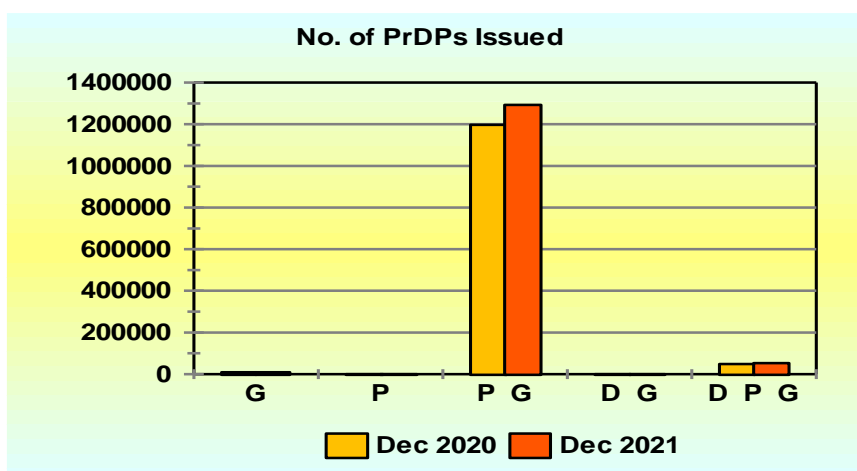


Figure 45: Number of PrDP's issued

Provincial information in this regard is given in the table below and the percentage change regarding all categories of PrDP's issued per Province is reflected in the figure below.

Year	GA	KZ	WC	EC	FS	MP	NW	LI	NC	RSA
Dec 2020	337 829	223 991	178 904	104 732	73 482	123 458	60 360	123 023	29 415	1 255 194
Dec 2021	378 097	239 827	189 966	110 728	75 814	132 632	64 711	131 455	32 011	1 355 241
Change	40 268	15 836	11 062	5 996	2 332	9 174	4 351	8 432	2 596	100 047
% Change	11,92	7,07	6,18	5,73	3,17	7,43	7,21	6,85	8,83	7,97

Table 25: Number of professional driving permits (PrDP's) issued per province

The information shows that all the provinces have recorded an increase in this regard. The highest increases were recorded for Gauteng, Northern Cape, and Mpumalanga with the following percentages 11,92%; 8,83% and 7,43% respectively.

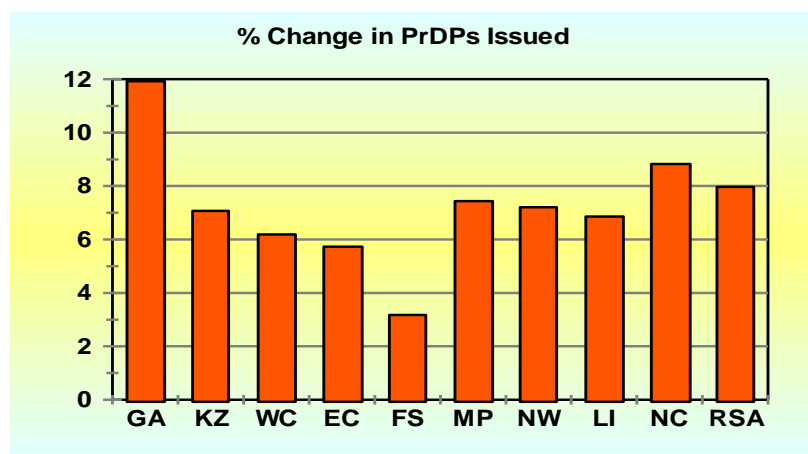


Figure 46: Percentage in PrDP's issued

3.4 Number of Expired PrDPs

The information in the table below shows that on 31 December 2021 there were 207 544 expired Professional Driving Permits (PrDPs) recorded on the National Traffic Information System (NaTIS). This figure represents 15,31% of all PrDPs issued. This information is also reflected in the figure below.

Category	GA	KZ	WC	EC	FS	MP	NW	LI	NC	RSA
On system	378 097	239 827	189 966	110 728	75 814	132 632	64 711	131 455	32 011	1 355 241
Not expired	321 522	200 315	161 770	93 513	64 659	113 346	53 171	112 562	26 839	1 147 697
Expired	56 575	39 512	28 196	17 215	11 155	19 286	11 540	18 893	5 172	207 544
% Expired	14,96	16,48	14,84	15,55	14,71	14,54	17,83	14,37	16,16	15,31

Table 26: Number of professional driving permits (PrDP's) issued and expired per province

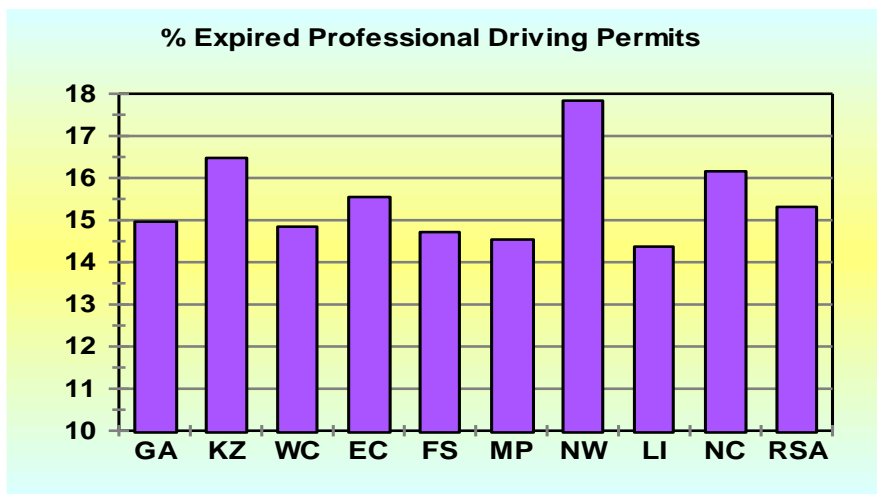


Figure 47: Percentage expired professional driving permits

North West has recorded the highest increase on expired PrDPs with 17,83%. Whilst KwaZulu Natal and Northern Cape has recorded more than 16% respectively.

Detailed information on the number of learner licences, driving licences and PrDPs per Province is provided in the tables under **Appendix C**.

Compiled by

.....

Ms Magadi Gainewe

Manager: Data Analysis and Reporting

Date:

Reviewed and supported by

.....

Mr Emmanuel Phasha

General Manager: Road Traffic Information

Date:

Recommended by

.....

Mr Kevin Kara-Vala

Executive Manager: Road Traffic Information & Technology

Date:

Approved by

.....

Advocate Makhosini Msibi

Chief Executive Officer

Date:

APPENDIX A

Dec 2020	Number of Registered Vehicles per Province									Total RSA
	GA	KZ	WC	EC	FS	MP	NW	LI	NC	
Motorised Veh's										
Motorcars	3 105 661	1 030 702	1 295 345	474 370	321 811	449 382	332 451	356 935	132 263	7 498 920
Minibuses	128 807	57 875	37 575	25 763	13 013	25 911	20 678	26 202	6 029	341 853
Buses	20 418	8 269	7 060	4 593	3 348	8 325	4 081	6 978	1 816	64 888
Motorcycles	139 120	30 152	84 779	21 207	17 784	17 364	12 436	8 665	7 539	339 046
LDV's - Bakkies	850 441	373 873	339 658	209 387	133 133	227 217	157 825	242 886	81 917	2 616 337
Trucks	138 351	50 361	46 078	22 503	22 595	44 307	17 380	27 076	9 136	377 787
Other & Unkwn	37 968	33 265	42 219	18 357	36 241	28 885	22 720	18 492	10 234	248 380
Sub-Total	4 420 766	1 584 497	1 852 714	776 180	547 925	801 391	567 571	687 234	248 934	11 487 211
Towed Veh's										
Caravans	36 693	6 682	18 430	5 064	7 100	9 747	6 094	5 434	2 669	97 913
Heavy Trailers	63 444	24 620	24 656	7 495	20 112	40 143	11 227	11 729	5 974	209 400
Light Trailers	337 252	82 308	152 167	58 439	63 234	66 546	54 322	44 172	30 067	888 507
Unknown	2 193	1 409	2 149	1 495	1 836	1 768	2 030	1 146	677	14 702
Sub-Total	439 582	115 019	197 402	72 493	92 282	118 204	73 673	62 481	39 387	1 210 522
All Vehicles	4 860 348	1 699 515	2 050 116	848 673	640 207	919 594	641 244	749 715	288 321	12 697 733
Dec 2021										
Dec 2021	Province									Total RSA
	GA	KZ	WC	EC	FS	MP	NW	LI	NC	
Motorised Veh's										
Motorcars	3 165 481	1 052 551	1 317 103	486 156	326 391	457 177	343 132	369 026	135 028	7 652 045
Minibuses	130 572	59 064	37 680	26 909	13 144	26 750	21 660	27 508	6 384	349 671
Buses	20 307	8 046	6 893	4 736	3 301	8 140	4 093	6 954	1 869	64 339
Motorcycles	144 190	31 320	87 177	21 338	17 561	17 242	12 539	8 696	7 561	347 624
LDV's - Bakkies	873 674	381 499	345 508	211 688	135 131	230 525	161 711	248 378	83 179	2 671 293
Trucks	144 368	52 221	46 892	22 954	23 614	44 185	17 880	27 648	9 350	389 112
Other & Unkwn	39 081	33 608	43 196	18 424	36 822	29 343	23 034	18 632	10 255	252 392
Sub-Total	4 517 673	1 618 309	1 884 449	792 205	555 964	813 362	584 049	706 842	253 626	11 726 476
Towed Veh's										
Caravans	36 409	6 631	18 825	5 116	7 013	9 648	6 085	5 435	2 662	97 824
Heavy Trailers	70 218	26 131	25 588	7 664	21 518	39 345	11 512	12 979	6 312	221 267
Light Trailers	337 536	83 558	155 947	59 458	63 510	66 817	54 907	44 879	30 569	897 181
Unknown	2 168	1 366	2 147	1 456	1 804	1 736	1 988	1 138	660	14 460
Sub-Total	446 331	117 686	202 507	73 694	93 845	117 546	74 492	64 431	40 203	1 230 732
All Vehicles	4 964 003	1 735 994	2 086 956	865 899	649 808	930 907	658 540	771 272	293 829	12 957 208
% Change Dec 2020 - 2021										
% Change Dec 2020 - 2021	Number of Registered Vehicles per Province									Total RSA
	GA	KZ	WC	EC	FS	MP	NW	LI	NC	
Motorised Vehicles										
Motorcars	1,93	2,12	1,68	2,48	1,42	1,73	3,21	3,39	2,09	2,04
Minibuses	1,37	2,05	0,28	4,45	1,01	3,24	4,75	4,98	5,89	2,29
Buses	-0,54	-2,70	-2,37	3,11	-1,40	-2,22	0,29	-0,34	2,92	-0,85
Motorcycles	3,64	3,87	2,83	0,62	-1,25	-0,70	0,83	0,36	0,29	2,53
LDV's - Bakkies	2,73	2,04	1,72	1,10	1,50	1,46	2,46	2,26	1,54	2,10
Trucks	4,35	3,69	1,77	2,00	4,51	-0,28	2,88	2,11	2,34	3,00
Other & Unknown	2,93	1,03	2,31	0,36	1,60	1,59	1,38	0,75	0,21	1,62
Sub-Total	2,19	2,13	1,71	2,06	1,47	1,49	2,90	2,85	1,88	2,08
Towed Vehicles										
Caravans	-0,77	-0,76	2,14	1,03	-1,23	-1,02	-0,15	0,02	-0,26	-0,09
Heavy Trailers	10,68	6,14	3,78	2,25	6,99	-1,99	2,54	10,66	5,66	5,67
Light Trailers	0,08	1,52	2,48	1,74	0,44	0,41	1,08	1,60	1,67	0,98
Unknown	-1,16	-3,05	-0,09	-2,61	-1,77	-1,81	-2,09	-0,74	-2,51	-1,65
Sub-Total	1,54	2,32	2,59	1,66	1,69	-0,56	1,11	3,12	2,07	1,67
All Vehicles	2,13	2,15	1,80	2,03	1,50	1,23	2,70	2,88	1,91	2,04

APPENDIX B-1

Number of Un-Roadworthy Vehicles										
Dec 2020	GA	KZ	WC	EC	FS	MP	NW	LI	NC	RSA
Motorised Vehicles										
Motorcars	150 151	31 975	34 546	15 647	14 280	14 419	11 382	8 787	3 453	284 640
Minibuses	22 101	7 253	3 659	2 899	2 116	2 836	2 693	2 500	680	46 737
Buses	4 157	1 414	964	623	548	1 083	594	745	381	10 509
Motorcycles	16 492	3 192	6 128	1 668	2 002	2 790	1 685	1 153	781	35 891
LDV's - Bakkies	38 482	11 408	9 188	5 955	4 776	6 489	4 596	5 370	1 706	87 970
Trucks	21 487	7 594	5 226	3 698	4 507	5 835	3 032	3 667	1 974	57 020
Other & Unkwn	3 552	2 453	2 201	1 591	3 735	3 103	2 194	2 120	797	21 746
Sub-Total	256 422	65 289	61 912	32 081	31 964	36 555	26 176	24 342	9 772	544 513
Towed Vehicles										
Caravans	1 401	303	654	164	314	414	249	196	121	3 816
Heavy Trailers	7 652	3 246	2 465	903	2 810	3 609	1 246	1 050	764	23 745
Light Trailers	10 349	3 439	4 761	1 627	2 633	2 256	1 924	1 368	792	29 149
Unknown	110	136	95	93	97	115	105	68	43	862
Sub-Total	19 512	7 124	7 975	2 787	5 854	6 394	3 524	2 682	1 720	57 572
All Vehicles	275 934	72 413	69 887	34 868	37 818	42 949	29 700	27 024	11 492	602 085
Dec 2021	GA	KZ	WC	EC	FS	MP	NW	LI	NC	RSA
Motorised Vehicles										
Motorcars	164 351	35 466	41 191	18 853	15 819	15 702	13 134	9 766	3 958	318 240
Minibuses	22 587	7 354	3 803	3 148	2 167	3 133	2 808	2 731	719	48 450
Buses	4 136	1 397	999	685	571	1 059	601	850	365	10 663
Motorcycles	18 686	3 727	7 303	1 885	2 215	2 810	1 872	1 234	871	40 603
LDV's - Bakkies	47 289	12 974	10 844	7 096	5 329	7 468	5 419	5 830	1 950	104 199
Trucks	23 017	7 971	5 359	3 661	4 487	5 769	2 937	3 624	1 998	58 823
Other & Unkwn	20 112	16 688	23 925	6 961	19 025	12 800	8 255	7 485	4 016	119 267
Sub-Total	300 178	85 577	93 424	42 289	49 613	48 741	35 026	31 520	13 877	700 245
Towed Vehicles										
Caravans	1 633	342	790	243	350	461	304	235	140	4 498
Heavy Trailers	11 122	6 050	3 881	992	4 171	5 207	2 432	1 429	1 121	36 405
Light Trailers	11 974	4 698	7 779	2 313	4 368	2 899	2 699	1 631	1 332	39 693
Unknown	2 260	1 212	2 175	913	1 856	2 315	2 568	1 542	505	15 346
Sub-Total	26 989	12 302	14 625	4 461	10 745	10 882	8 003	4 837	3 098	95 942
All Vehicles	327 167	97 879	108 049	46 750	60 358	59 623	43 029	36 357	16 975	796 187
% Change	GA	KZ	WC	EC	FS	MP	NW	LI	NC	RSA
Motorised Vehicles										
Motorcars	9,46	10,92	19,24	20,49	10,78	8,90	15,39	11,14	14,62	11,80
Minibuses	2,20	1,39	3,94	8,59	2,41	10,47	4,27	9,24	5,74	3,67
Buses	-0,51	-1,20	3,63	9,95	4,20	-2,22	1,18	14,09	-4,20	1,47
Motorcycles	13,30	16,76	19,17	13,01	10,64	0,72	11,10	7,03	11,52	13,13
LDV's - Bakkies	22,89	13,73	18,02	19,16	11,58	15,09	17,91	8,57	14,30	18,45
Trucks	7,12	4,96	2,54	-1,00	-0,44	-1,13	-3,13	-1,17	1,22	3,16
Other & Unkwn	466,22	580,31	987,01	337,52	409,37	312,50	276,25	253,07	403,89	448,45
Sub-Total	17,06	31,07	50,90	31,82	55,22	33,34	33,81	29,49	42,01	28,60
Towed Vehicles										
Caravans	16,56	12,87	20,80	48,17	11,46	11,35	22,09	19,90	15,70	17,87
Heavy Trailers	45,35	86,38	57,44	9,86	48,43	44,28	95,18	36,10	46,73	53,32
Light Trailers	15,70	36,61	63,39	42,16	65,89	28,50	40,28	19,23	68,18	36,17
Unknown	1954,55	791,18	2189,47	881,72	1813,40	1913,04	2345,71	2167,65	1074,42	1680,28
Sub-Total	38,32	72,68	83,39	60,06	83,55	70,19	127,10	80,35	80,12	66,65
All Vehicles	18,57	35,17	54,61	34,08	59,60	38,82	44,88	34,54	47,71	32,24

APPENDIX B-2

Number of Un-Licensed Vehicles										
Dec 2020	GA	KZ	WC	EC	FS	MP	NW	LI	NC	RSA
Motorised Vehicles										
Motorcars	215 342	72 023	80 149	38 028	22 746	33 944	23 642	26 768	8 947	521 589
Minibuses	14 996	4 530	2 288	1 955	1 048	1 690	1 653	1 769	436	30 365
Buses	1 444	433	247	309	178	448	367	422	134	3 982
Motorcycles	14 084	3 116	7 842	2 027	1 647	1 812	1 231	1 011	634	33 404
LDV's - Bakkies	51 368	26 025	16 462	15 294	7 486	14 091	9 435	16 278	4 327	160 766
Trucks	6 398	2 560	1 411	1 310	915	2 676	932	1 805	349	18 356
Other & Unkwn	2 199	1 854	1 653	908	1 739	1 501	1 264	1 101	606	12 825
Sub-Total	305 831	110 541	110 052	59 831	35 759	56 162	38 524	49 154	15 433	781 287
Towed Vehicles										
Caravans	1 948	410	789	294	384	517	302	367	159	5 170
Heavy Trailers	2 093	828	492	268	496	1 699	354	379	198	6 807
Light Trailers	26 383	7 061	9 491	4 549	3 961	4 303	3 730	3 254	2 009	64 741
Unknown	299	182	216	218	231	177	299	119	92	1 833
Sub-Total	30 723	8 481	10 988	5 329	5 072	6 696	4 685	4 119	2 458	78 551
All Vehicles	336 554	119 022	121 040	65 160	40 831	62 858	43 209	53 273	17 891	859 838
Dec 2021	GA	KZ	WC	EC	FS	MP	NW	LI	NC	RSA
Motorised Vehicles										
Motorcars	156 695	51 526	46 297	30 195	18 087	27 700	19 366	23 807	7 030	380 703
Minibuses	9 527	2 859	1 422	1 476	715	1 285	1 135	1 440	304	20 163
Buses	797	194	154	185	110	299	147	267	63	2 216
Motorcycles	10 025	2 163	4 584	1 332	1 164	1 233	857	647	505	22 510
LDV's - Bakkies	38 259	18 492	9 744	12 400	5 822	12 121	7 694	14 954	3 315	122 801
Trucks	4 410	1 610	774	909	638	1 777	659	1 353	295	12 425
Other & Unkwn	1 543	1 421	1 087	750	1 251	1 053	921	789	438	9 253
Sub-Total	221 256	78 265	64 062	47 247	27 787	45 468	30 779	43 257	11 950	570 071
Towed Vehicles										
Caravans	1 381	258	510	172	250	362	230	241	124	3 528
Heavy Trailers	1 475	657	251	129	307	958	233	219	119	4 348
Light Trailers	18 634	4 625	5 864	3 377	2 870	3 450	2 595	2 529	1 509	45 453
Unknown	205	104	139	137	147	142	240	75	63	1 252
Sub-Total	21 695	5 644	6 764	3 815	3 574	4 912	3 298	3 064	1 815	54 581
All Vehicles	242 951	83 909	70 826	51 062	31 361	50 380	34 077	46 321	13 765	624 652
% Change	GA	KZ	WC	EC	FS	MP	NW	LI	NC	RSA
Motorised Vehicles										
Motorcars	-27,23	-28,46	-42,24	-20,60	-20,48	-18,40	-18,09	-11,06	-21,43	-27,01
Minibuses	-36,47	-36,89	-37,85	-24,50	-31,77	-23,96	-31,34	-18,60	-30,28	-33,60
Buses	-44,81	-55,20	-37,65	-40,13	-38,20	-33,26	-59,95	-36,73	-52,99	-44,35
Motorcycles	-28,82	-30,58	-41,55	-34,29	-29,33	-31,95	-30,38	-36,00	-20,35	-32,61
LDV's - Bakkies	-25,52	-28,95	-40,81	-18,92	-22,23	-13,98	-18,45	-8,13	-23,39	-23,62
Trucks	-31,07	-37,11	-45,15	-30,61	-30,27	-33,59	-29,29	-25,04	-15,47	-32,31
Other & Unkwn	-29,83	-23,35	-34,24	-17,40	-28,06	-29,85	-27,14	-28,34	-27,72	-27,85
Sub-Total	-27,65	-29,20	-41,79	-21,03	-22,29	-19,04	-20,10	-12,00	-22,57	-27,03
Towed Vehicles										
Caravans	-29,11	-37,07	-35,36	-41,50	-34,90	-29,98	-23,84	-34,33	-22,01	-31,76
Heavy Trailers	-29,53	-20,65	-48,98	-51,87	-38,10	-43,61	-34,18	-42,22	-39,90	-36,12
Light Trailers	-29,37	-34,50	-38,22	-25,76	-27,54	-19,82	-30,43	-22,28	-24,89	-29,79
Unknown	-31,44	-42,86	-35,65	-37,16	-36,36	-19,77	-19,73	-36,97	-31,52	-31,70
Sub-Total	-29,39	-33,45	-38,44	-28,41	-29,53	-26,64	-29,61	-25,61	-26,16	-30,52
All Vehicles	-27,81	-29,50	-41,49	-21,64	-23,19	-19,85	-21,13	-13,05	-23,06	-27,35

APPENDIX B-3

Number of Vehicles : Un-Roadworthy OR Un-Licensed OR Both										
Dec 2020	GA	KZ	WC	EC	FS	MP	NW	LI	NC	RSA
Motorised Vehicles										
Motorcars	380 294	108 835	120 063	56 931	39 700	51 166	36 875	37 542	13 149	844 555
Minibuses	40 708	12 753	6 409	5 314	3 437	4 920	4 716	4 683	1 222	84 162
Buses	6 012	1 947	1 276	984	766	1 624	1 035	1 241	554	15 439
Motorcycles	33 103	6 857	14 960	3 951	3 978	5 026	3 177	2 364	1 517	74 933
LDV's - Bakkies	93 726	39 200	27 051	22 460	12 970	21 676	14 730	22 788	6 347	260 948
Trucks	29 202	10 653	7 004	5 309	5 722	9 067	4 249	5 910	2 442	79 558
Other & Unkwn	6 076	4 522	3 996	2 605	5 745	4 825	3 630	3 385	1 483	36 267
Sub-Total	589 121	184 767	180 759	97 554	72 318	98 304	68 412	77 913	26 714	1 395 862
Towed Vehicles										
Caravans	3 508	769	1 510	475	734	988	581	596	291	9 452
Heavy Trailers	10 090	4 213	3 065	1 236	3 414	5 553	1 645	1 523	1 038	31 777
Light Trailers	38 247	10 953	14 824	6 399	6 860	6 841	5 888	4 818	2 910	97 740
Unknown	429	339	323	321	344	299	419	190	139	2 803
Sub-Total	52 274	16 274	19 722	8 431	11 352	13 681	8 533	7 127	4 378	141 772
All Vehicles	641 395	201 041	200 481	105 985	83 670	111 985	76 945	85 040	31 092	1 537 634
Number of Vehicles : Un-Roadworthy OR Un-Licensed OR Both										
Dec 2021	GA	KZ	WC	EC	FS	MP	NW	LI	NC	RSA
Motorised Vehicles										
Motorcars	334 315	90 808	91 137	52 091	36 117	45 873	33 986	35 356	11 586	731 269
Minibuses	34 751	10 962	5 561	4 965	3 112	4 744	4 282	4 473	1 103	73 953
Buses	5 232	1 671	1 214	932	728	1 452	792	1 205	446	13 672
Motorcycles	30 569	6 239	12 565	3 405	3 585	4 341	2 926	2 019	1 475	67 124
LDV's - Bakkies	88 938	32 833	21 537	20 557	11 749	20 705	13 665	21 833	5 497	237 314
Trucks	28 525	9 989	6 373	4 853	5 397	7 997	3 824	5 313	2 430	74 701
Other & Unkwn	22 541	18 932	25 703	8 039	21 037	14 436	9 582	8 636	4 642	133 548
Sub-Total	544 871	171 434	164 090	94 842	81 725	99 548	69 057	78 835	27 179	1 331 581
Towed Vehicles										
Caravans	3 124	625	1 348	431	633	866	555	498	276	8 356
Heavy Trailers	12 907	7 008	4 230	1 168	4 634	6 397	2 759	1 731	1 295	42 129
Light Trailers	31 661	9 700	14 058	5 883	7 495	6 594	5 485	4 319	2 938	88 133
Unknown	2 548	1 364	2 367	1 081	2 065	2 531	2 961	1 657	591	17 165
Sub-Total	50 240	18 697	22 003	8 563	14 827	16 388	11 760	8 205	5 100	155 783
All Vehicles	595 111	190 131	186 093	103 405	96 552	115 936	80 817	87 040	32 279	1 487 364
Number of Vehicles : Un-Roadworthy OR Un-Licensed OR Both										
% Change	GA	KZ	WC	EC	FS	MP	NW	LI	NC	RSA
Motorised Vehicles										
Motorcars	-12,09	-16,56	-24,09	-8,50	-9,03	-10,34	-7,83	-5,82	-11,89	-13,41
Minibuses	-14,63	-14,04	-13,23	-6,57	-9,46	-3,58	-9,20	-4,48	-9,74	-12,13
Buses	-12,97	-14,18	-4,86	-5,28	-4,96	-10,59	-23,48	-2,90	-19,49	-11,45
Motorcycles	-7,65	-9,01	-16,01	-13,82	-9,88	-13,63	-7,90	-14,59	-2,77	-10,42
LDV's - Bakkies	-5,11	-16,24	-20,38	-8,47	-9,41	-4,48	-7,23	-4,19	-13,39	-9,06
Trucks	-2,32	-6,23	-9,01	-8,59	-5,68	-11,80	-10,00	-10,10	-0,49	-6,10
Other & Unkwn	270,98	318,66	543,22	208,60	266,18	199,19	163,97	155,13	213,01	268,24
Sub-Total	-7,51	-7,22	-9,22	-2,78	13,01	1,27	0,94	1,18	1,74	-4,61
Towed Vehicles										
Caravans	-10,95	-18,73	-10,73	-9,26	-13,76	-12,35	-4,48	-16,44	-5,15	-11,60
Heavy Trailers	27,92	66,34	38,01	-5,50	35,74	15,20	67,72	13,66	24,76	32,58
Light Trailers	-17,22	-11,44	-5,17	-8,06	9,26	-3,61	-6,84	-10,36	0,96	-9,83
Unknown	493,94	302,36	632,82	236,76	500,29	746,49	606,68	772,11	325,18	512,38
Sub-Total	-3,89	14,89	11,57	1,57	30,61	19,79	37,82	15,13	16,49	9,88
All Vehicles	-7,22	-5,43	-7,18	-2,43	15,40	3,53	5,03	2,35	3,82	-3,27

APPENDIX C-1

Dec 2020	Number of Learners Licences Issued per Province									
Category	GA	KZ	WC	EC	FS	MP	NW	LI	NC	RSA
1	11 536	2 619	8 627	1 686	1 671	1 712	1 174	1 101	616	30 742
2	48 563	20 318	61 254	17 151	9 972	5 379	6 157	3 107	3 731	175 632
3	239 895	120 038	70 784	60 118	38 100	77 797	44 410	74 958	17 757	743 857
Total	299 994	142 975	140 665	78 955	49 743	84 888	51 741	79 166	22 104	950 231
Dec 2021	Number of Learners Licences Issued per Province									
Category	GA	KZ	WC	EC	FS	MP	NW	LI	NC	RSA
1	12 649	2 922	9 406	1 781	1 412	1 681	1 241	1 144	580	32 816
2	50 931	21 395	70 702	18 319	10 734	6 089	6 593	3 232	3 449	191 444
3	271 534	146 773	83 117	62 130	40 614	93 535	52 194	87 291	20 167	857 355
Total	335 114	171 090	163 225	82 230	52 760	101 305	60 028	91 667	24 196	1 081 615
% Change	Number of Learners Licences Issued per Province									
Category	GA	KZ	WC	EC	FS	MP	NW	LI	NC	RSA
1	9,65	11,57	9,03	5,63	-15,50	-1,81	5,71	3,91	-5,84	6,75
2	4,88	5,30	15,42	6,81	7,64	13,20	7,08	4,02	-7,56	9,00
3	13,19	22,27	17,42	3,35	6,60	20,23	17,53	16,45	13,57	15,26
Total	11,71	19,66	16,04	4,15	6,07	19,34	16,02	15,79	9,46	13,83

Learner Licences:

Category 1 : Motorcycle

Category 2 : Light Motor Vehicle

Category 3 : Heavy Motor Vehicle

APPENDIX C-2

Dec 2020	Number of Driving Licences Issued per Province									
Category										
A	181 464	62 559	122 502	35 703	26 594	23 504	20 020	15 717	9 695	497 758
A1	43 354	13 013	29 444	9 207	8 753	6 454	6 189	3 790	2 371	122 575
B	1 167 787	499 701	667 160	260 072	157 199	129 249	123 285	80 734	56 690	3 141 877
C	4 963	4 967	5 533	1 240	543	3 215	1 683	1 861	496	24 501
C1	1 622 103	807 046	258 234	270 722	192 001	541 767	266 695	697 141	84 582	4 740 291
EB	1 284 616	575 594	823 197	314 581	174 688	157 663	139 239	109 287	64 946	3 643 811
EC	339 641	200 331	132 762	79 475	86 621	129 965	59 443	108 939	26 969	1 164 146
EC1	217 317	69 532	50 054	46 559	34 857	51 990	36 002	66 217	11 394	583 922
Total	4 861 245	2 232 743	2 088 886	1 017 559	681 256	1 043 807	652 556	1 083 686	257 143	13 918 881
Dec 2021	Number of Driving Licences Issued per Province									
Category	GA	KZ	WC	EC	FS	MP	NW	LI	NC	RSA
A	183 671	63 137	125 821	36 075	26 689	23 697	20 127	15 974	9 732	504 923
A1	43 061	12 997	29 820	9 231	8 698	6 398	6 155	3 788	2 365	122 513
B	1 213 792	513 820	699 107	269 870	162 392	131 765	126 844	82 154	58 631	3 258 375
C	5 022	4 982	5 676	1 251	549	3 320	1 683	1 858	503	24 844
C1	1 740 934	861 542	277 293	291 216	203 522	577 179	284 663	732 929	91 283	5 060 561
EB	1 281 810	575 456	831 006	315 189	173 971	156 942	138 964	109 260	64 859	3 647 457
EC	356 371	209 846	137 083	82 089	89 067	137 641	61 259	113 529	27 820	1 214 705
EC1	216 510	69 530	49 945	46 662	34 739	51 923	35 795	66 411	11 401	582 916
Total	5 041 171	2 311 310	2 155 751	1 051 583	699 627	1 088 865	675 490	1 125 903	266 594	14 416 294
% Change	Number of Driving Licences Issued per Province									
Category	GA	KZ	WC	EC	FS	MP	NW	LI	NC	RSA
A	1,22	0,92	2,71	1,04	0,36	0,82	0,53	1,64	0,38	1,44
A1	-0,68	-0,12	1,28	0,26	-0,63	-0,87	-0,55	-0,05	-0,25	-0,05
B	3,94	2,83	4,79	3,77	3,30	1,95	2,89	1,76	3,42	3,71
C	1,19	0,30	2,58	0,89	1,10	3,27	0,00	-0,16	1,41	1,40
C1	7,33	6,75	7,38	7,57	6,00	6,54	6,74	5,13	7,92	6,76
EB	-0,22	-0,02	0,95	0,19	-0,41	-0,46	-0,20	-0,02	-0,13	0,10
EC	4,93	4,75	3,25	3,29	2,82	5,91	3,06	4,21	3,16	4,34
EC1	-0,37	-0,00	-0,22	0,22	-0,34	-0,13	-0,57	0,29	0,06	-0,17
Total	3,70	3,52	3,20	3,34	2,70	4,32	3,51	3,90	3,68	3,57

Driving Licences:

A	Motorcycle > 125 cub.cm	A1	Motorcycle < 125 cub.cm	B	Motor vehicle < 3,5000 kg
C	Motorvehicle > 16,000 kg	C1	Motor vehicle 3,500 – 16,000 kg	EB	Articulated motor vehicle <16,000 kg
		EC	Articulated vehicle > 16,000 kg	EC1	Articulated vehicle 3,500 – 16,000 kg

APPENDIX C-3

Dec 2020	Number of Professional Driving Permits (PrDP's) Issued per Province									
Category	GA	KZ	WC	EC	FS	MP	NW	LI	NC	RSA
G	1 627	1 634	1 565	719	800	858	439	745	372	8 759
P G	319 595	209 765	172 482	101 251	69 301	118 266	58 517	119 981	28 218	1 197 376
D G	26	14	12	10	16	12	14	22	9	135
D P G	16 581	12 578	4 845	2 752	3 365	4 322	1 390	2 275	816	48 924
Total	337 829	223 991	178 904	104 732	73 482	123 458	60 360	123 023	29 415	1 255 194
Dec 2021										
Category	GA	KZ	WC	EC	FS	MP	NW	LI	NC	RSA
G	1 650	1 711	1 775	720	728	948	423	802	415	9 172
P G	357 675	224 448	183 279	107 128	71 654	126 843	62 791	128 128	30 714	1 292 660
D G	41	12	17	10	21	24	6	24	9	164
D P G	18 731	13 656	4 895	2 870	3 411	4 817	1 491	2 501	873	53 245
Total	378 097	239 827	189 966	110 728	75 814	132 632	64 711	131 455	32 011	1 355 241
% Change										
Category	GA	KZ	WC	EC	FS	MP	NW	LI	NC	RSA
G	1,41	4,71	13,42	0,14	-9,00	10,49	-3,64	7,65	11,56	4,72
P G	11,92	7,00	6,26	5,80	3,40	7,25	7,30	6,79	8,85	7,96
D G	57,69	-14,29	41,67	0,00	31,25	100,00	-57,14	9,09	0,00	21,48
D P G	12,97	8,57	1,03	4,29	1,37	11,45	7,27	9,93	6,99	8,83
Total	11,92	7,07	6,18	5,73	3,17	7,43	7,21	6,85	8,83	7,97

Professional Driving Permits (PrDPs)

G : Goods

P : Passengers

D : Dangerous goods



Road Traffic
Management Corporation

Road Traffic Management Corporation
Eco Origin Office Park, Block F
349 Witch-Hazel Street
Highveld Ext 79
Tell: 012 999 5200

.....
Want to know more about the RTMC - visit www.rtmc.co.za