



**Road Traffic**  
Management Corporation

***State of Road Safety Report***  
***July – September 2019***



**transport**

---

Department:  
Transport  
**REPUBLIC OF SOUTH AFRICA**

## Table of contents

<b>Table of contents</b>	<b>ii</b>
<b>List of Figures</b>	<b>3</b>
<b>List of acronyms and abbreviations</b>	<b>5</b>
1. OBJECTIVE OF THE REPORT	6
2. EXECUTIVE SUMMARY	7
SECTION A	9
1. INTRODUCTION	9
2. METHODOLOGY	9
3. FATAL ROAD CRASH ANALYSIS	11
4. ROAD FATALITIES ANALYSIS	18
5. MAJOR CRASHES	24
SECTION B	32
1. INTRODUCTION	32
2. VEHICLE POPULATION	32
<b>APPENDIX A</b>	<b>60</b>

## List of Tables

Table 1: Number of fatal crashes per province 2018 and 2019 .....	11
Table 2: Comparison of Number of Fatal Crashes per day of week for quarter 2 of 2018 and 2019 .....	12
Table 3: Comparison of fatalities per province for the two quarters of 2018 and 2019.....	18
Table 4: Number of registered vehicles per type for 2018 and 2019 .....	32
Table 5: Number of registered vehicles per province.....	33
Table 6: Estimated mid-month human population per province – million .....	36
Table 7: Average number of persons per vehicle (excluding trucks, other, unknown and towed vehicles) .....	36
Table 8: Percentage improvement in mobility per province .....	37
Table 9: Average number of persons per "heavy" passenger transport.....	38
Table 10: Percentage improvement in average number of persons per.....	39
Table 11: Average number of public transport vehicles (buses and minibuses).....	40
Table 12: Number of un-roadworthy, un-licenced vehicles or both.....	42
Table 13: Number of vehicles that are un-roadworthy or un-licenced or both.....	43
Table 14: Number of un-roadworthy vehicles.....	44
Table 15: Number of un-roadworthy vehicles.....	45
Table 16: Number of un-licenced vehicles .....	47
Table 17: Number of un-licenced vehicles .....	48
Table 18: Number of learner licences issued .....	50
Table 19: Number of learners licences issued per province .....	51
Table 20: Number of driving licences issued .....	52
Table 21: Number and percentage of driving licences issued per category .....	53
Table 22: Number of driving licences issued per province .....	54
Table 23: Number of driving licences cards issued and expired per province 2019 .....	55
Table 24: Number of PrDP's issued.....	56
Table 25: Number of professional driving permits (PrDP's) issued per province .....	57

Table 26: Number of professional driving permits (PrDP's) issued and expired per province 2019  
..... 58

## List of Figures

Figure 1: Percentage distribution of fatal crashes for the two quarters .....	11
Figure 2: Percentage distribution of fatal crashes per day of week.....	12
Figure 3: Percentage distribution of fatal crashes per time of day for two quarters .....	13
Figure 4: Percentage distribution of fatal crashes per crash type .....	14
Figure 5: Percentage distribution of fatal crashes per vehicle type.....	14
Figure 6: Comparison of contributory factors for 2018 and 2019 .....	15
Figure 7: Percentage distribution of human factors.....	16
Figure 8: Percentage distribution for vehicle factor .....	16
Figure 9: Percentage distribution fatalities per province in 2018 and 2019.....	18
Figure 10: Percentage distribution of fatalities per road user .....	19
Figure 11: Percentage distribution of fatalities per gender .....	19
Figure 12: Percentage distribution of fatalities per race.....	20
Figure 13: Percentage distribution of fatalities per age for drivers .....	21
Figure 14: Percentage distribution of fatalities per age for passengers .....	22
Figure 15: Percentage distribution of fatalities per age for pedestrians.....	22
Figure 16: Percentage distribution of fatalities per age for cyclists.....	23
Figure 17: Comparison of major crashes, fatalities and injuries.....	24
Figure 18: Map showing crashes and fatalities per province .....	25
Figure 19: Major crashes per crash type.....	26
Figure 20: Vehicles involved in major crashes.....	26
Figure 21: Percentage Annual Growth in Vehicles .....	33
Figure 22: Percentage Annual Growth in Vehicle Population .....	34
Figure 23: Percentage Annual Growth in Vehicle Population .....	34
Figure 24: Percentage Vehicles Registered per Province .....	35
Figure 25: Average number of persons per vehicle (excluding trucks, .....	37
Figure 26: Percentage improvement in mobility of persons .....	37

Figure 27: Average number of persons per " heavy vehicles" (buses and minibuses) .....	39
Figure 28: Number of buses and minibuses / 10,000 human population .....	41
Figure 29: Percentage change in number of vehicles un-roadworthy or un-licensed or both ....	43
Figure 30: Percentage of un-roadworthy vehicles .....	45
Figure 31: Percentage change in number of vehicles that are un-roadworthy .....	46
Figure 32: Percentage of un-roadworthy vehicles .....	46
Figure 33: Percentage of un-licenced vehicles .....	48
Figure 34: Percentage change in number of vehicle that are un-licensed .....	49
Figure 35: Percentage of un-licensed vehicles .....	49
Figure 36: Number of learner licenses issues .....	50
Figure 37: Percentage change in learner licenses issued per province .....	51
Figure 38: Number of driving licenses issued .....	53
Figure 39: Percentage change in driving licenses issued .....	54
Figure 40: Percentage expired driving license cards .....	55
Figure 41: Number of PrDP's issued .....	56
Figure 42: Percentage in PrDP's issued .....	57
Figure 43: Percentage expired professional driving permits .....	58

## List of acronyms and abbreviations

CHOCOR	:	CULPABLE HOMICIDE CRIME: OBSERVATION REPORT
EC	:	EASTERN CAPE
GA	:	GAUTENG
FS	:	FREE STATE
LI	:	LIMPOPO
MP	:	MPUMALANGA
NC	:	NORTHERN CAPE
NW	:	NORTH WEST
WC	:	WESTERN CAPE
KZN	:	KWAZULU NATAL
SAPS	:	SOUTH AFRICAN POLICE SERVICE
NATIS	:	ELECTRONIC NATIONAL TRAFFIC INFORMATION SYSTEM
NREP	:	NATIONAL ROLLOUT ENFORCEMENT PLAN

## **1. OBJECTIVE OF THE REPORT**

This report is aimed at achieving the following objectives:

- To provide road traffic fatal crashes and fatalities statistics based on the Culpable Homicide Crash: Observation Report (CHoCOR) Forms; and
- To present statistics on registered vehicles, un-roadworthy vehicles, un-licenced vehicles, driving licence and professional driving permits issued.



## **2. EXECUTIVE SUMMARY**

The purpose of the report is to provide final road crash statistics for the period July – September 2019. The performance is provided below.

### *Road Crashes Data*

A total number of 2 626 fatalities were recorded for the period between July – September 2019 from 2 178 fatal crashes. As a result there was a decrease of 21.61% fatalities from 2018 to 2019. The most affected road user group during 2019 was the pedestrians. However, passengers recorded a slight decrease of 1% from 32% to 31%.

A total number of twenty-seven (27) major crashes were reported and investigated for the period under review. One-hundred and sixty-one (161) persons were killed and two-hundred and forty-seven (247) persons sustained injuries in these major crashes.

### *Vehicle and driver population*

The number of registered vehicles increased by 283 348 (2.28%) from 12 420 372 as on 30 September 2018 to 12 703 720 vehicles as on 30 September 2019.

On a national basis the total number of vehicles that are either un-roadworthy, un-licenced or both decreased by 64 775 (5.50%) from 1 177 497 vehicles as on 30 September 2018 to 1 112 722 vehicles as on 30 September 2019.

The number of learner driving licences issued increased by 2 038 (0.17%) from 1 182 675 as at 30 September 2018 to 1 184 713 as at 30 September 2019. The number of driving licences issued increased by 489 708 (3.79%) from 12 933 975 as at 30 September 2018 to 13 423 683 as of 30 September 2019.

## **SECTION A**

### **1. INTRODUCTION**

This report is based on information about fatal crashes that were reported to police stations between July and September 2018 and 2019 using the CHoCOR Form. In addition, the report includes information about registered vehicles, un-roadworthy and un-licenced vehicles, driving licence and professional driving permits issued from the National Traffic Information System (NaTIS). Furthermore, it includes information about population growth using the 2019 mid-year population estimates from Statistics South Africa (Stats SA).

### **2. METHODOLOGY**

#### **2.1 Road crash data collection methodology**

The Culpable Homicide Crash Observation Report (CHoCOR) form is utilised to collect fatal road crash data on daily basis. South African Police Service (SAPS) is the primary source of the fatal crash data. SAPS provide the Corporation with a list of all recorded fatal crashes (CAS list) and further to this, the Corporation receive the CHoCOR forms from various police stations. Road Traffic Management Corporation captures, processes and verifies the data to compile a report.

#### **2.2 Crash Data Flow**

The data is collected through the CHoCOR forms which are submitted to the Corporation either by fax, email or through the phone.

#### **2.3 Data processing**

The data is captured and verified for compilation of the consolidated statistical report. There is a continuous engagement with provinces for validation purpose.

## **2.4 Limitations**

The road traffic information contained in the report is based mainly on the fatal crashes only. There is still a need for in-depth research to be conducted to collect scientific base facts to complement the administrative data.

## **2.5 Sample**

Sampling is not applicable for fatal crashes routine or administrative data as the data is collected as they occurred within the country from all nine (9) provinces.

## **2.6 Instruments**

The Culpable Homicide Crash Observation Report (CHoCOR) forms are being used by Road Traffic Information unit to record fatal road crash data on daily basis.

### 3. FATAL ROAD CRASH ANALYSIS

The section covers the data in relation to fatal road crashes, which encompasses the number of fatal crashes and fatalities, contributory factors, fatality information per road user group and major crashes.

#### 3.1 Number of fatal crashes

The table below provides a comparison between two quarters. There was a decrease of 591 (21.3%) from 2 769 to 2 178 in comparison to quarter 2 of 2018 and 2019. However, on a provincial level all provinces recorded a decrease in this regard with the exception of Northern Cape and Eastern Cape. The highest decrease was recorded for Gauteng with 42% followed by KwaZulu Natal with 38.4%.

Number of Fatal Crashes per Province										
Year	EC	FS	GP	KZN	LI	MP	NC	NW	WC	RSA
2018	331	182	643	549	326	280	63	212	183	2 769
2019	353	156	373	338	297	254	80	144	183	2 178
change	22	-26	-270	-211	-29	-26	17	-68	0	-591
% change	6,6	-14,3	-42,0	-38,4	-8,9	-9,3	27,0	-32,1	0,0	-21,3

Table 1: Number of fatal crashes per province 2018 and 2019

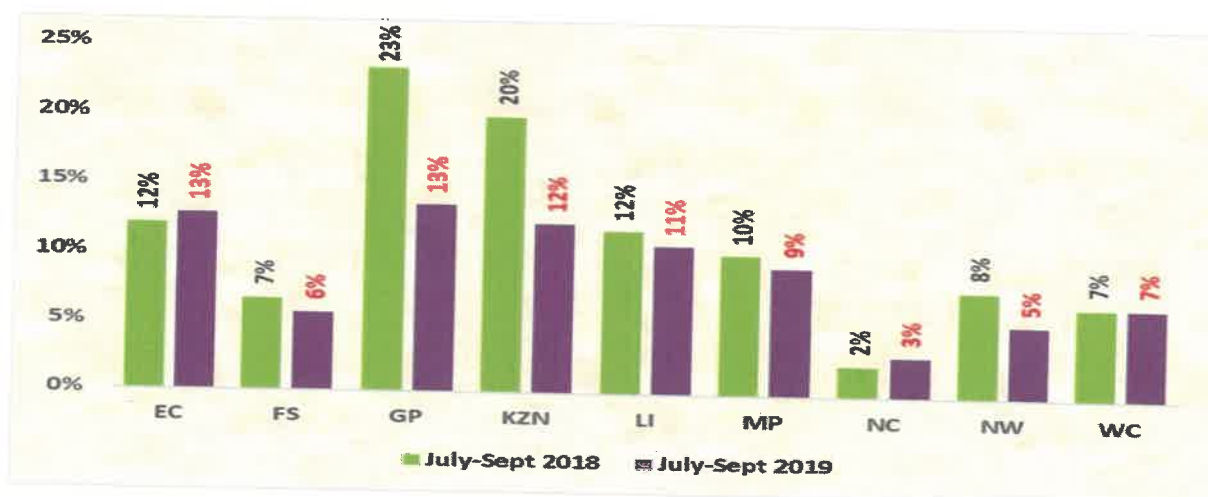


Figure 1: Percentage distribution of fatal crashes for the two quarters

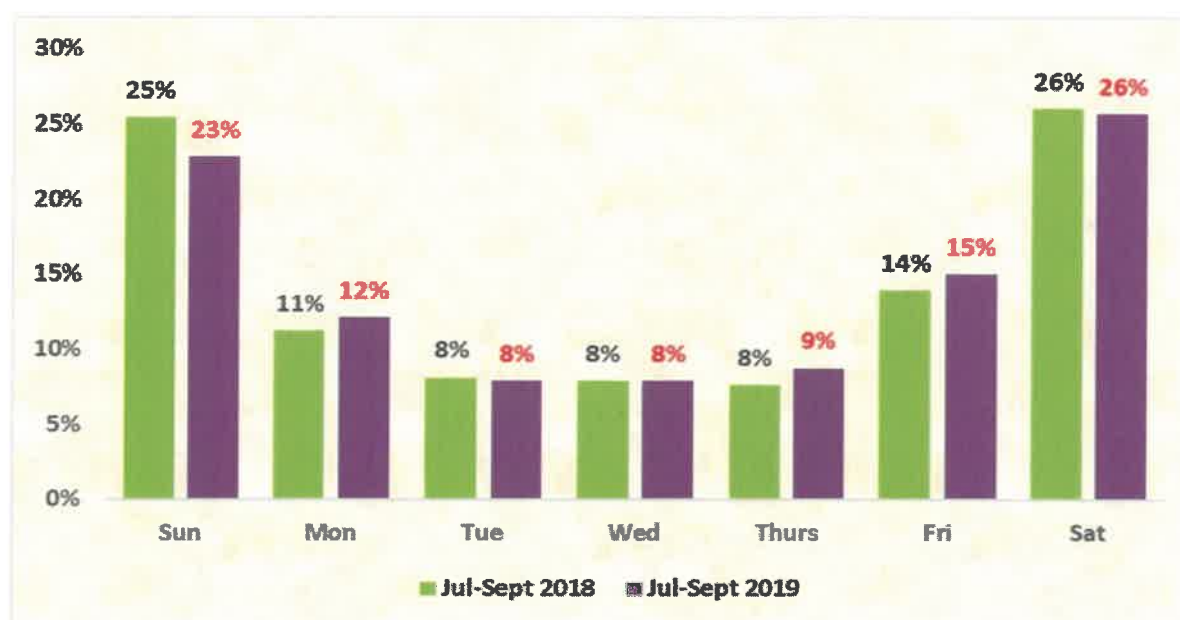
### 3.1.1 Fatal Crashes per Day of Week

The details of the fatal crashes per day of the week is given in the table below. Friday, Saturday and Sunday remain the most affected day of the week by fatal crashes for both 2018 and 2019. Saturday and Sunday contributed more than 20% respectively for both quarters.

Quarter 2	Sun	Mon	Tue	Wed	Thurs	Fri	Sat
Jul-Sept 2018	25%	11%	8%	8%	8%	14%	26%
Jul-Sept 2019	23%	12%	8%	8%	9%	15%	26%

**Table 2: Comparison of Number of Fatal Crashes per day of week for quarter 2 of 2018 and 2019**

The percentage of fatal crashes per day of the week for the period under review is reflected in the figure below.



**Figure 2: Percentage distribution of fatal crashes per day of week**

### 3.1.2 Fatal Crashes per time of day

The percentage of fatal crashes per time of day for the period under review is reflected in the figure below.

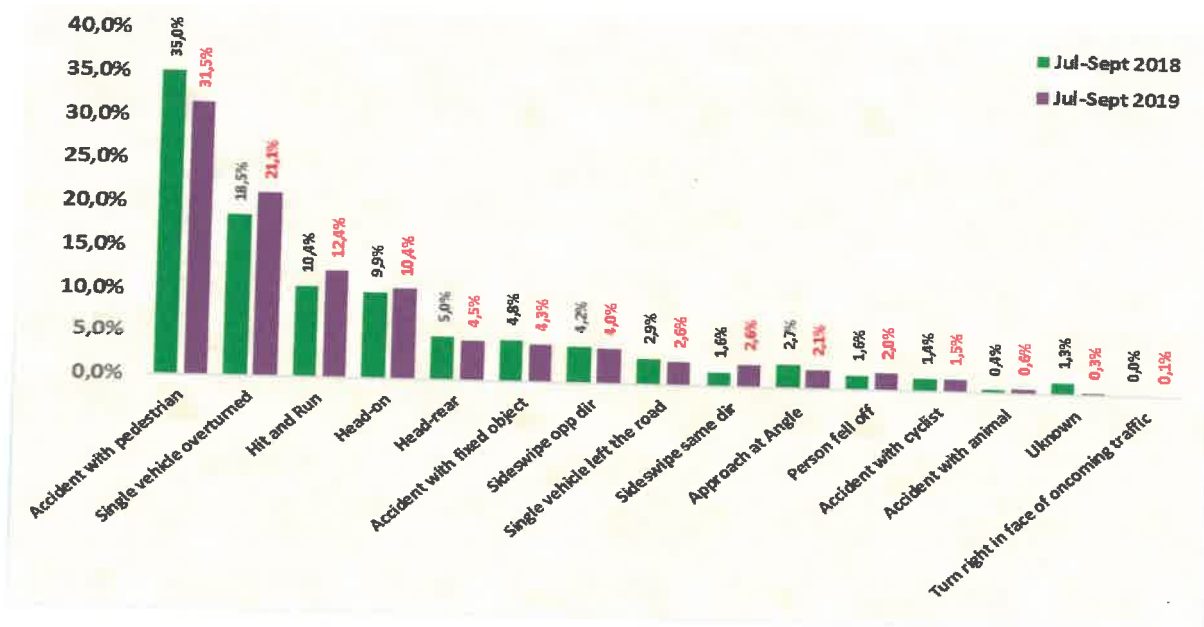


**Figure 3: Percentage distribution of fatal crashes per time of day for two quarters 2018 and 2019**

The figure above depicts a comparison between fatal crashes per time of day comparing quarter 2 of 2018 and 2019. In comparison, slot 18:00 to 19:00 remained the highest with more than 10% however with a slight decrease of 0.7% compared to the previous year. A downward trend was observed for slots 22:00 to 23:00, and a slight increase of 1.1% for time slot 20:00 to 21:00.

### 3.1.3 Fatal crashes per crash type

The percentage contribution of fatal crashes per crash type is reflected in the figure below.



**Figure 4: Percentage distribution of fatal crashes per crash type**

The figure above depicts that most crashes occurred due to crashes with pedestrians and single vehicle overturned. A contribution of 35% for 2018 was recorded for fatal crashes involving pedestrians and 31.5% in 2019 of which shows a decrease of 4.5%. Followed by single vehicle overturned with a contribution of 18.5% in 2018 and 21.1% for 2019, of which shows an increase of 2.6%.

### 3.1.4 Fatal crashes per vehicle type

The percentage contribution of various vehicles involved in the fatal crashes are reflected in the figure below.

**Figure 5: Percentage distribution of fatal crashes per vehicle type**

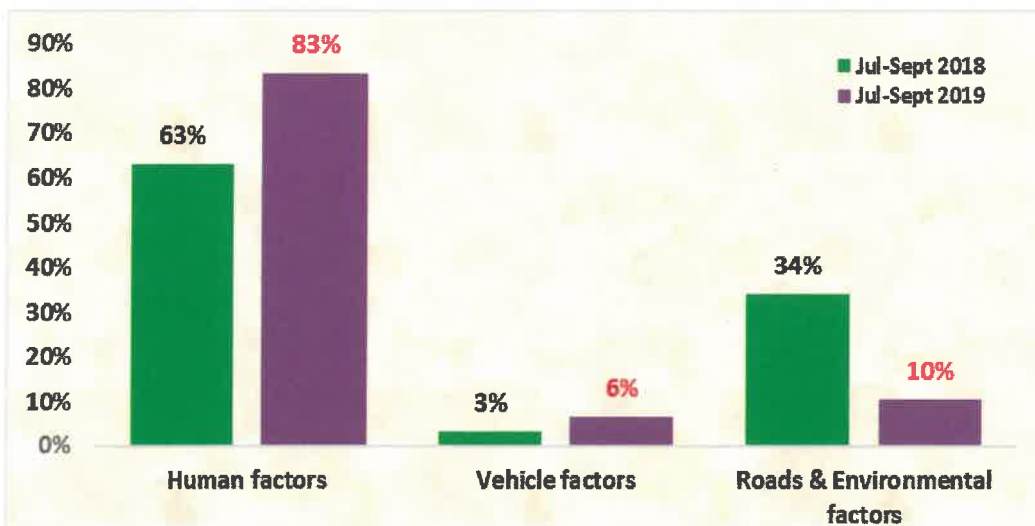


The vehicle types that contributed the highest to fatal crashes were motorcars and LDV's with contributions of 45.8% and 19.9% respectively during 2019. The two vehicle types may contribute to high number of fatalities for passengers.

### 3.2 Contributory factors

The contributory factors for fatal road crashes are determined as follows: human factors (defined as a stable, general human abilities and limitations that are valid for all users regardless); vehicle factors (are more focussed on the vehicle itself and they cover issues around mechanical failures; and environment (include limited visibility, poorly marked roads, missing road signs, sudden changes in road infrastructure, gravel road, the state of the road and weather conditions).

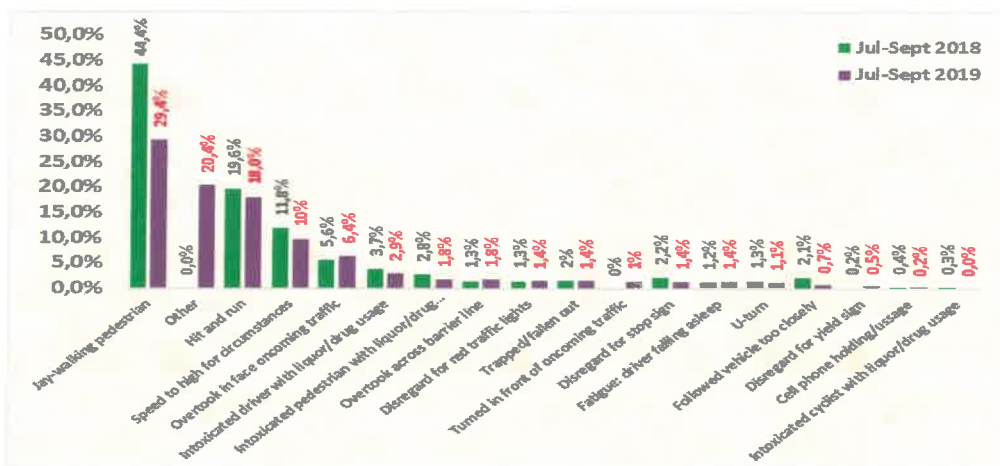
The fatal crashes for July - September 2019 showed that human factors contributed 83% to the occurrence of fatal crashes followed by roads and environmental factors at 10%; and vehicle factors with a contribution of 6%.



**Figure 6: Comparison of contributory factors for 2018 and 2019**

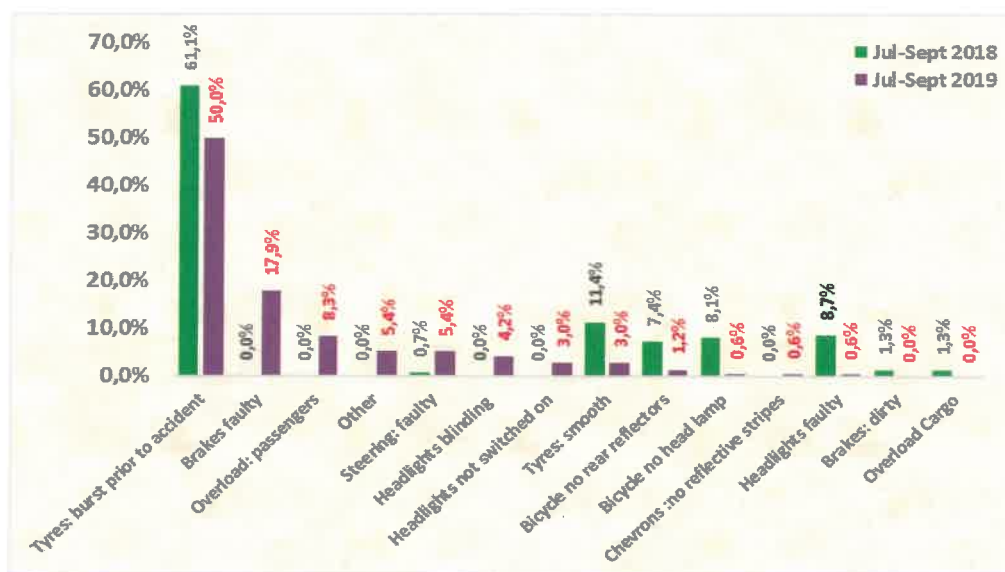
The figure above depicts trends for contributory factors for the two quarters. The human factors remain a challenge compared to other factors.

There was an increase of 20% for human factors and a decrease of 24% for roads and environmental factors, while vehicles factors recorded an increase of 3%.



**Figure 7: Percentage distribution of human factors**

The figure above shows that jay-walking contributed 29,4% to the occurrence of fatal crashes, followed by hit and run and speeding with 18% and 10% respectively during 2019. Jay-walking and hit and run as depicted above correlate to a high number of fatalities for pedestrians.



**Figure 8: Percentage distribution for vehicle factor**

The figure above shows that most crashes occurred as a result of a tyre burst prior to the crash with a contribution of 61,1% in 2019 and 50% during 2018. The brakes faulty brakes with a contribution of 17.9% and overloading of passengers with 8.3% contribution.

## 4. ROAD FATALITIES ANALYSIS

The section covers the data in relation to road fatalities. Fatalities are defined as when a person or persons are killed during or immediately after a crash, or death within 30 days after a crash happened as a direct result on such crash. This section encompassed the number of fatalities and percentage distribution per road user group, gender, race and per age.

### 4.1 Number of fatalities per province

Number of Fatalities per Province										
Year	EC	FS	GP	KZN	LI	MP	NC	NW	WC	RSA
2018	418	246	727	648	411	340	91	253	216	3350
2019	423	192	423	385	389	336	102	175	201	2626
change	5	-54	-304	-263	-22	-4	11	-78	-15	-724
% change	1,20	-21,95	-41,82	-40,59	-5,35	-1,18	12,09	-30,83	-6,94	-21,61

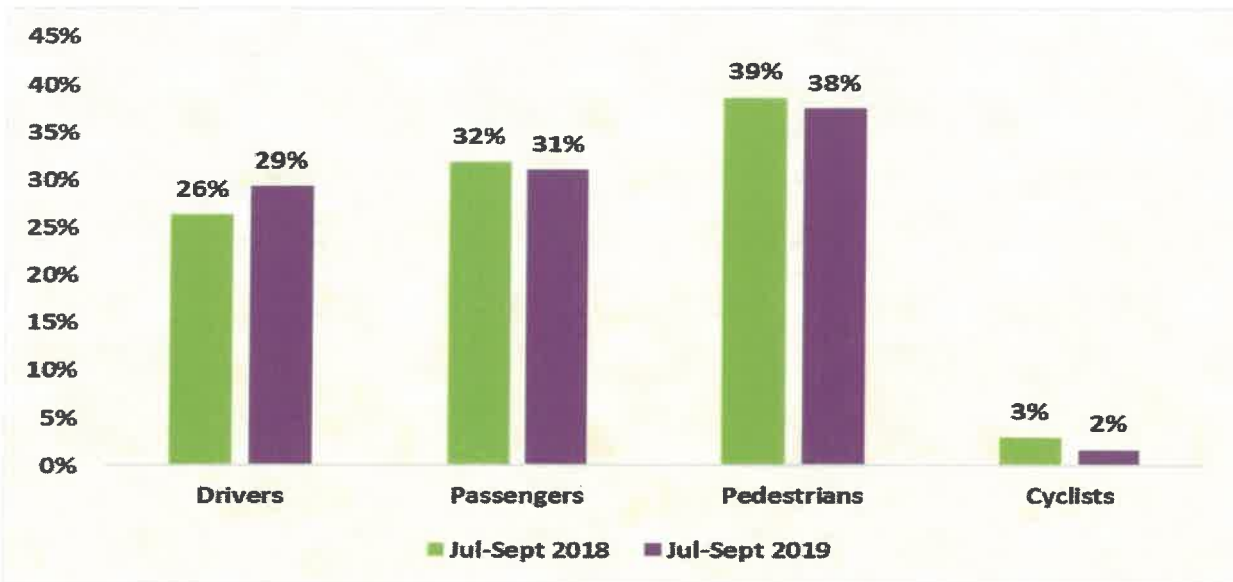
**Table 3: Comparison of fatalities per province for the two quarters of 2018 and 2019**

The table above shows a comparison of fatalities per province for the two quarters. A decrease in the number of fatalities is depicted from 3 350 in 2018 to 2 626 in 2019. All the provinces with the exception of Northern Cape and Eastern Cape recorded a decrease in the number of fatalities. The highest recorded decreases were for Gauteng with 41.82% followed by KwaZulu Natal with 40.59%.



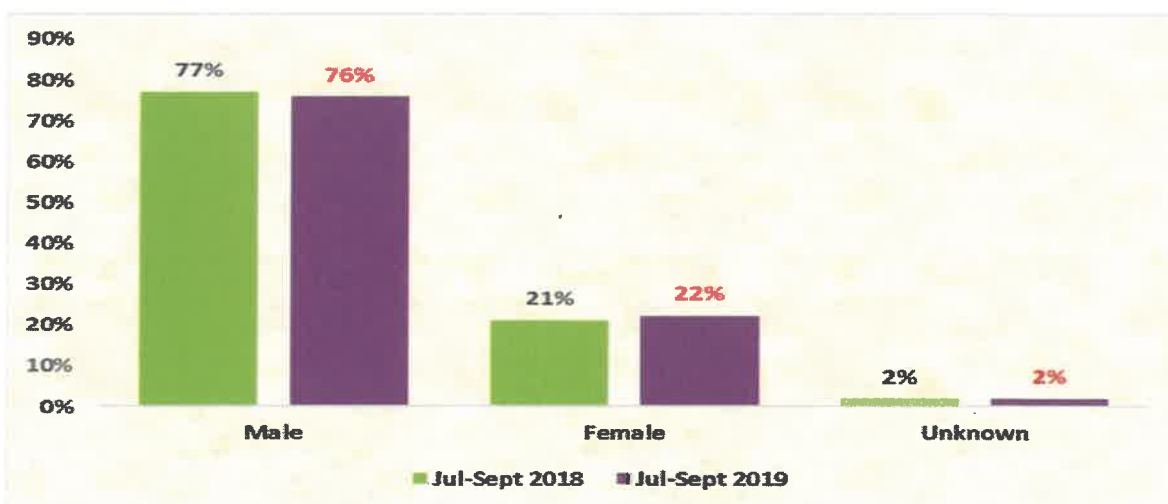
**Figure 9: Percentage distribution fatalities per province in 2018 and 2019**

## 4.2 Number of Fatalities per Road User Group



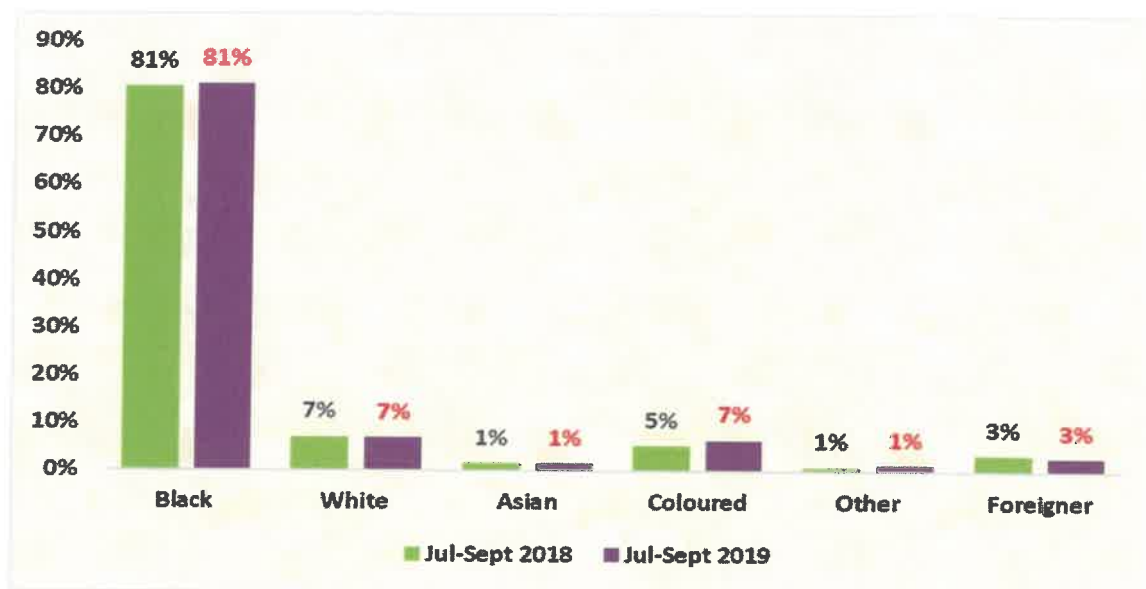
**Figure 10: Percentage distribution of fatalities per road user**

The percentage distribution of fatalities per road user groups is reflected in the figure above. During the period under review, pedestrians contributed 38%, followed by passengers with 31% and drivers with 29% to the total number of fatalities. All road user groups with exception of drivers recorded a decrease as compared to the previous year.



**Figure 11: Percentage distribution of fatalities per gender**

The figure above depicts trends for fatalities per gender for the two quarters. The trends show that there is a slight decrease of 1% for both males and females in comparison of the two quarters.

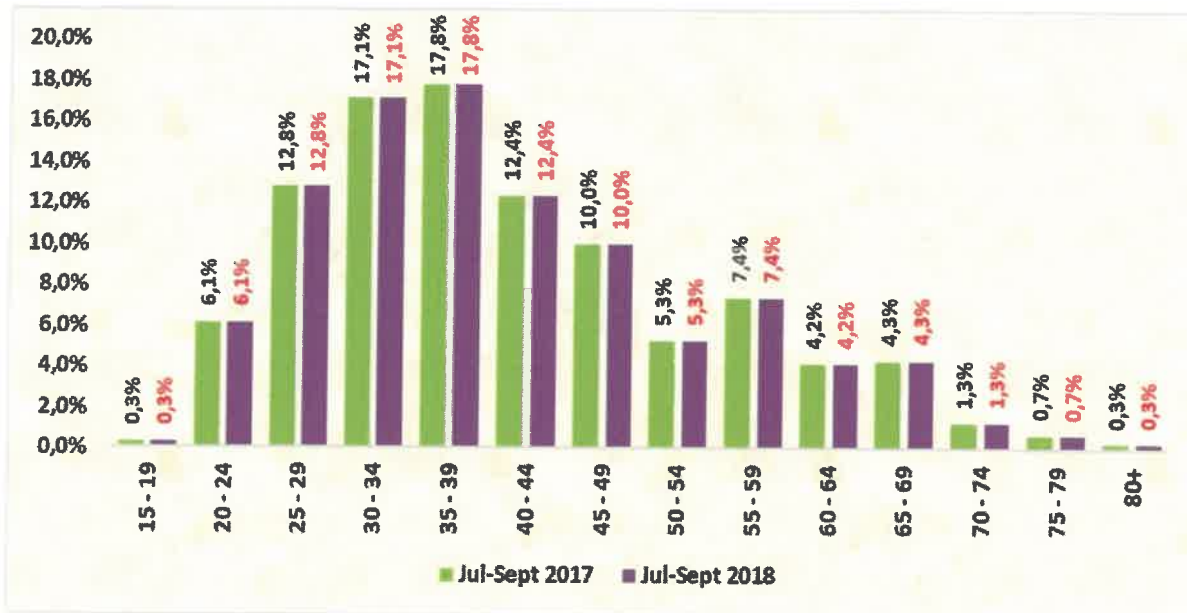


**Figure 12: Percentage distribution of fatalities per race**

The figure above depicts trends for fatalities per race for the two quarters. The trend shows that there was an increase of 2% for coloured while the other race groups remained the same.

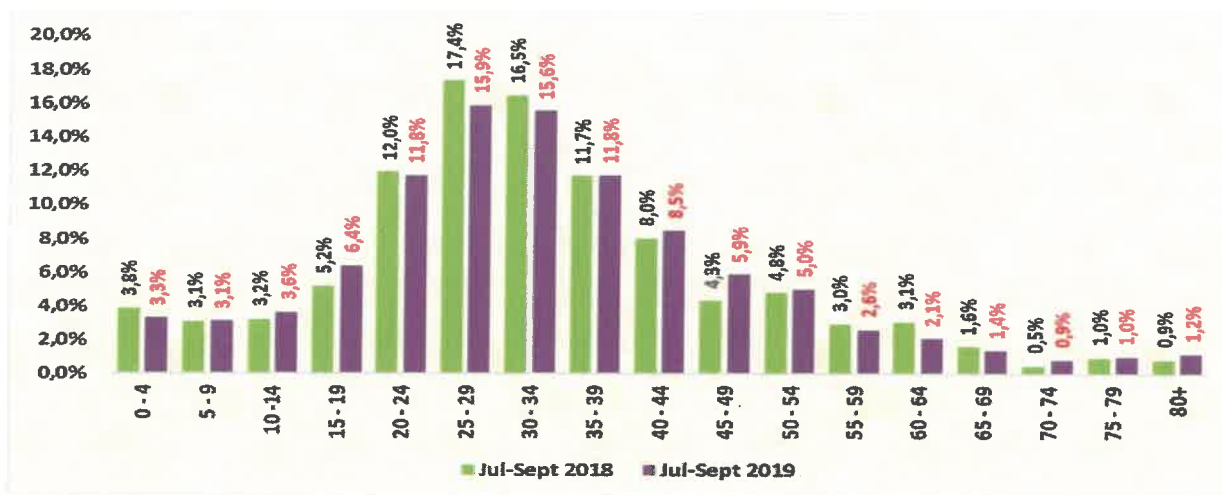
### 4.3 Road user group fatalities per age group

The figures below provide information with regard to the fatalities per age and per road user group for the period July to September 2018 and 2019. The information is categorised per road user group (Driver, Passenger, Pedestrian and Cyclists).



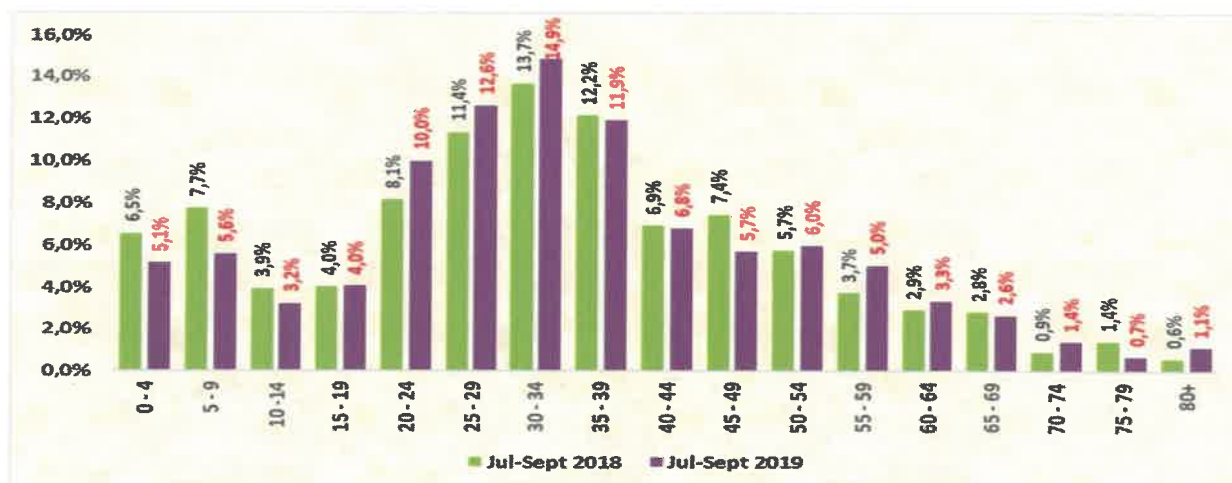
**Figure 13: Percentage distribution of fatalities per age for drivers**

The figure above shows that the highest fatalities for drivers were recorded from age group 30 to 39 years with a contribution of more than 17%. Followed by age groups 25-29 and 40-44 years with a contribution of more than 12% respectively during 2019 period.



**Figure 14: Percentage distribution of fatalities per age for passengers**

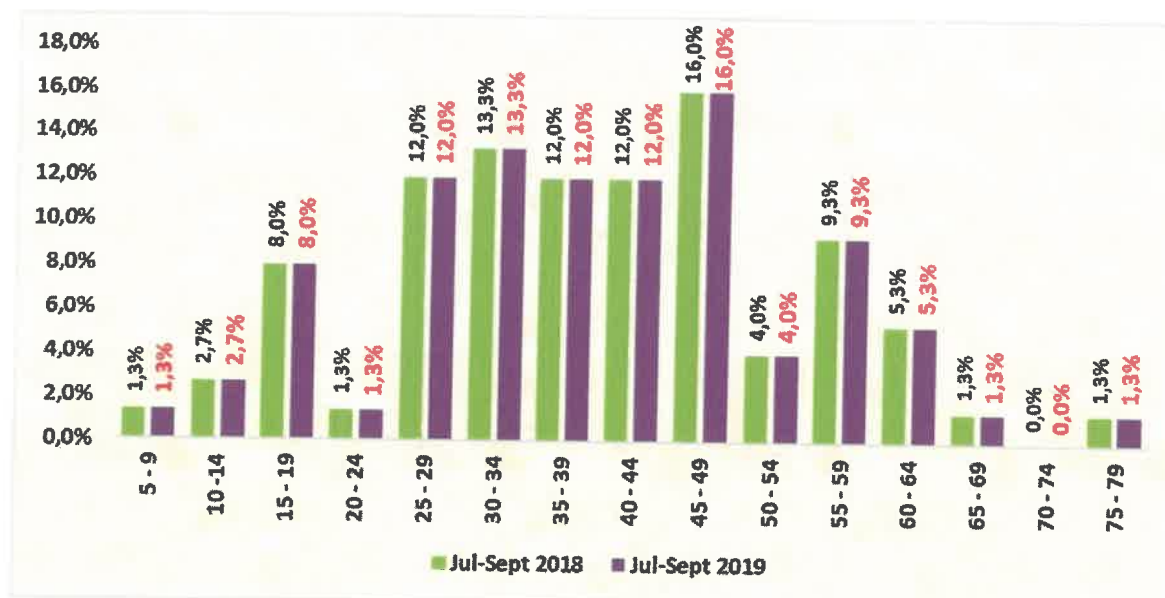
The figure above indicates that most fatalities for passengers were recorded for age group 25 and 34 years with a contribution of above 15%. Followed by the age groups between 20 to 24 and 35 to 39 years with a contribution of more than 11% respectively during 2019.



**Figure 15: Percentage distribution of fatalities per age for pedestrians**

The figure above indicates that the highest fatalities for pedestrians were recorded between the age group 30 to 34 years with a contribution of 14.9% for 2019. Followed by age group between 25 to 29 with a contribution of 12.6%.





**Figure 16: Percentage distribution of fatalities per age for cyclists**

The figure above indicates that most fatalities for cyclists were recorded between ages 45 to 49 with a contribution of 16% for 2018 and 2019. The age group 30 to 34 recorded the second highest percentage at 13.3% for both periods.

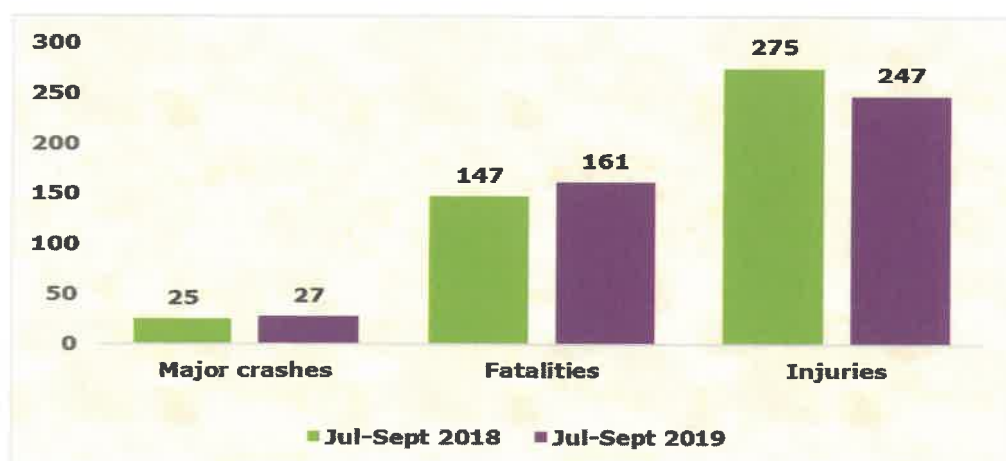
## 5. MAJOR CRASHES

This section provides for all the major crashes for the period under review. Major crashes are defined as Crashes where five (5) or more people died, crashes involving vehicles carrying dangerous goods / hazardous chemicals where there is a fatality and a spillage of the dangerous goods / hazardous chemicals, and any crash that the Corporation deems necessary to investigate.

### 5.1 Number of major crashes

A total number of twenty-seven (27) major crashes were reported and investigated for the period under review. One-hundred and sixty-one (161) persons were killed in the major crashes and two-hundred and forty-seven (247) persons sustained injuries in these major crashes.

The figure below indicates the number of major crashes recorded and investigated, number of fatalities and injuries sustained during the period under review in comparison with the previous year's quarter. During the current period under review the number of the major crashes reported and fatalities has increased by 2 and 14 respectively as compared to the previous year.



**Figure 17: Comparison of major crashes, fatalities and injuries**

## 5.2 MAJOR CRASHES PER PROVINCE

The highest number of fatal crashes and fatalities were reported and investigated in the following Provinces:

- Eastern Cape Province (4 crashes and 23 fatalities);
- Gauteng Province (5 crashes and 26 fatalities);
- Kwa-Zulu Natal Province (7 crashes and 45 fatalities);
- Limpopo Province (2 crashes and 19 fatalities);
- Mpumalanga Province (5 crashes and 24 fatalities);
- Northern Cape Province (1 crash and 5 fatalities); and
- Western Cape Province (3 crashes and 19 fatalities).

The following Provinces recorded the highest severity rate of fatalities per crash:

- Limpopo Province (9.5 fatalities per crash);
- Kwazulu-Natal Province (6.4 fatalities per crash);
- Western Cape Province (6.3 fatalities per crash); and
- Eastern Cape Province (5.8 fatalities per crash).

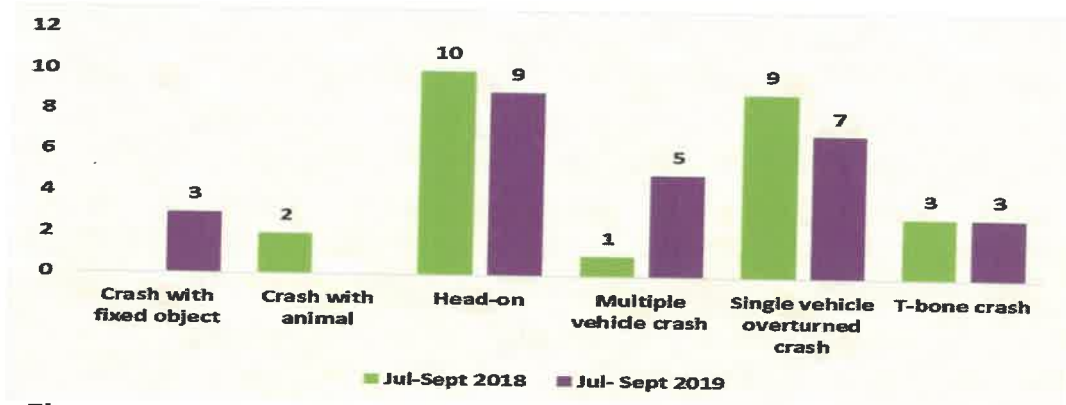
The map below indicates the spread of the number of major crashes and fatalities across the provinces for the period under review.



**Figure 18: Map showing crashes and fatalities per province**

### 5.3 Crash Types

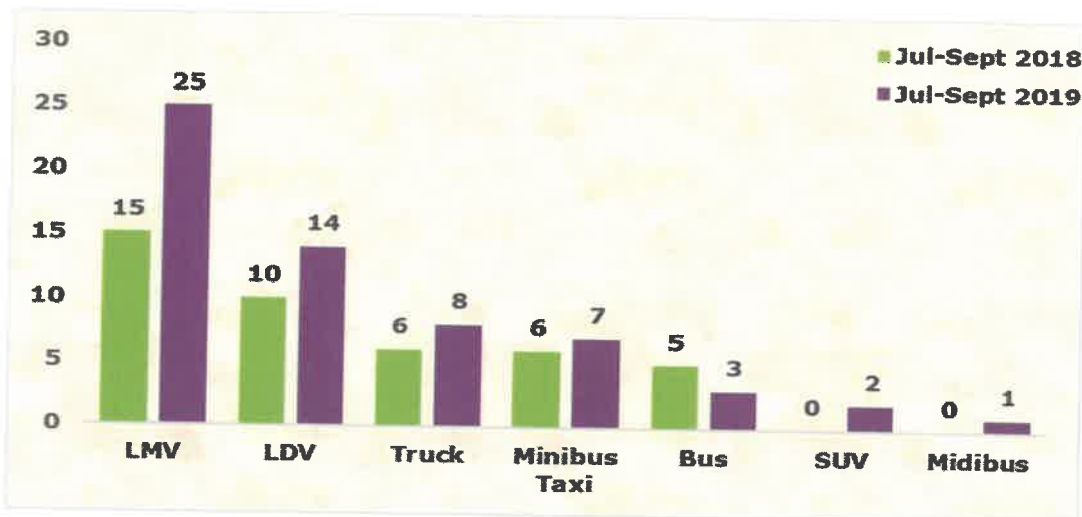
The figure below indicates the number of crashes per crash type.



**Figure 19: Major crashes per crash type**

The crash type with the highest contribution to major fatal crashes were Head-on with 9 followed by single vehicle overturned with 7 major fatal crashes.

### 5.4 Vehicle Involved in Major Crashes



**Figure 20: Vehicles involved in major crashes**

The figure above depicts the vehicle types involved in the major crashes reported and investigated during the second quarters of 2018 and 2019. A total of forty-two (42) vehicles were involved during the second quarter of 2018 while during the second quarter of 2019 there were sixty (60) vehicles involved.

## **Contributory Factors in Major Crashes**

The analysis from major fatal crashes report indicates that 89% of the contributory factors occurred were due to Driver/ Human Error which increased by 9% from 80% in 2018. The vehicle factor contributed 4% to the major crashes which decreased by 8% from 12% in 2018. The road and environment contributed 7% to the major crashes which reduced by 1% from 8% in 2018.

## SECTION B

### 1. INTRODUCTION

The section covers the vehicle population and human mobility data, as well as driver population. The vehicle population data will encompass the number of registered vehicles inclusive of the status of their roadworthiness and licencing, as well as human mobility in terms of the number of persons per vehicle. The driver population data covers the number of registered drivers including the status and categories of licences

### 2. VEHICLE POPULATION

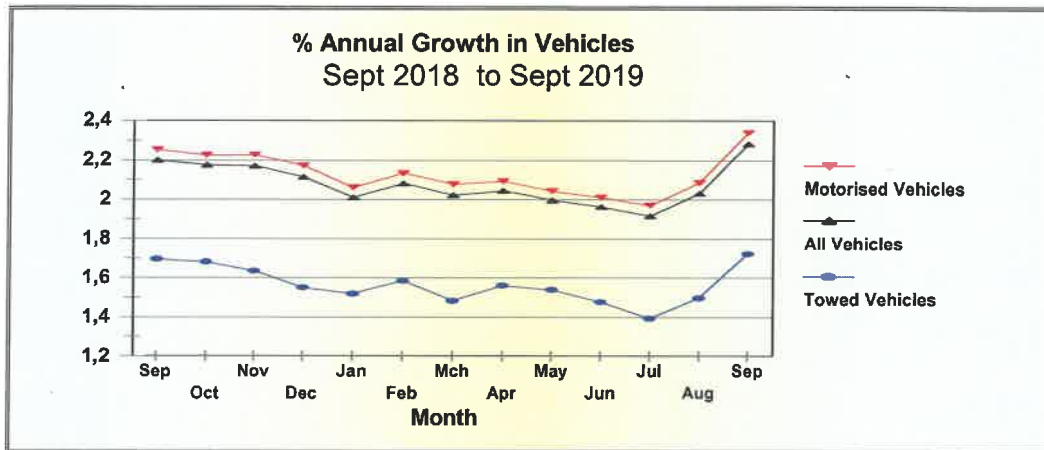
#### 2.1 Number of Registered Vehicles

The number of registered vehicles increased by 283 348 (2.28%) from 12 420 372 on 30 September 2018 to 12 703 720 vehicles as at 30 September 2019. Detail per type of vehicle is given in table below.

Number of Registered Vehicles	Number registered Sept 2018	Number registered Sept 2019	Change	% Change	% of Group Sept 2019	% of Total Sept 2019
<b>Motorised Vehicles</b>						
Motorcars	7 317 044	7 495 294	178 250	2,44	65,21	59,00
Minibuses	326 419	341 194	14 775	4,53	2,97	2,69
Buses	64 217	65 408	1 191	1,85	0,57	0,51
Motorcycles	347 418	346 516	-902	-0,26	3,01	2,73
LDV's - Bakkies	2 548 999	2 612 980	63 981	2,51	22,73	20,57
Trucks	375 933	381 148	5 215	1,39	3,32	3,00
Other & Unknown	250 906	251 249	344	0,14	2,19	1,98
<b>Total Motorised</b>	<b>11 230 936</b>	<b>11 493 789</b>	<b>262 854</b>	<b>2,34</b>	<b>100,00</b>	<b>90,48</b>
<b>Towed Vehicles</b>						
Caravans	101 204	100 119	-1 085	-1,07	8,27	0,79
Heavy Trailers	198 073	205 458	7 385	3,73	16,98	1,62
Light Trailers	874 583	889 084	14 501	1,66	73,48	7,00
Other & Unknown	15 577	15 270	-307	-1,97	1,26	0,12
<b>Total Towed</b>	<b>1 189 437</b>	<b>1 209 931</b>	<b>20 495</b>	<b>1,72</b>	<b>100,00</b>	<b>9,52</b>
<b>All Vehicles</b>	<b>12 420 372</b>	<b>12 703 720</b>	<b>283 348</b>	<b>2,28</b>		<b>100,00</b>

**Table 4: Number of registered vehicles per type for 2018 and 2019**

The table above shows that on a percentage basis the biggest change was for motorcars and LDV Bakkies with an increase of 59% and 20.57% respectively. The number of registered motorcars increased from 7 317 044 to 7 495 294 and followed by LDV Bakkies with an increased from 2 548 999 to 2 612 980 respectively. The monthly percentage change over the past year for motorised vehicles are shown in the figure below.



**Figure 21: Percentage Annual Growth in Vehicles**

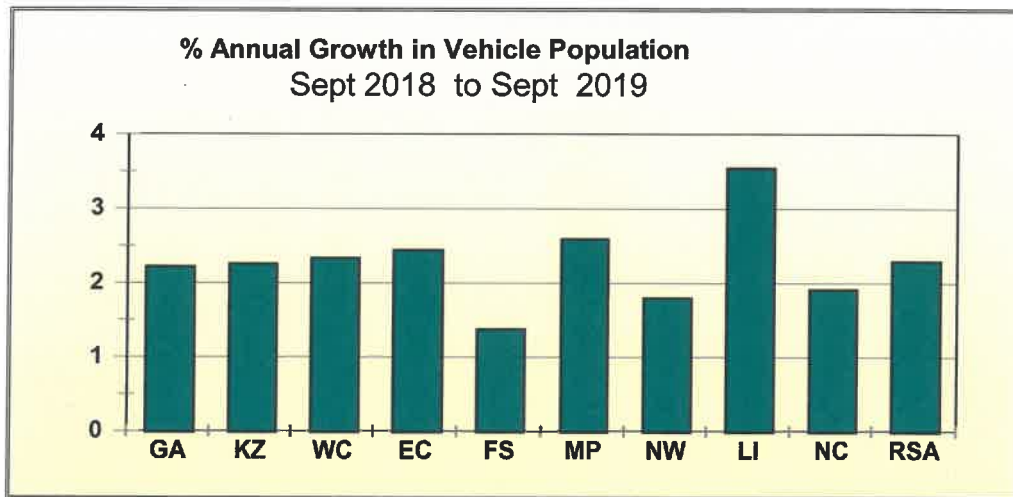
The total motor vehicle population per Province for September 2018 and September 2019 respectively, is given in table and reflected in the figure below.

Number of Registered Vehicles per Province	Number registered Sept 2018	Number registered Sept 2019	Change	% Change	% of Total Sept 2019
<b>Gauteng</b>	4 788 182	4 893 971	105 789	2,21	38,52
<b>KwaZulu-Natal</b>	1 655 265	1 692 524	37 259	2,25	13,32
<b>Western Cape</b>	2 009 304	2 056 052	46 748	2,33	16,18
<b>Eastern Cape</b>	825 250	845 339	20 089	2,43	6,65
<b>Free State</b>	631 707	640 371	8 664	1,37	5,04
<b>Mpumalanga</b>	895 461	918 601	23 140	2,58	7,23
<b>North West</b>	625 936	637 158	11 222	1,79	5,02
<b>Limpopo</b>	708 770	733 857	25 087	3,54	5,78
<b>Northern Cape</b>	280 497	285 847	5 350	1,91	2,25
<b>RSA</b>	<b>12 420 372</b>	<b>12 703 720</b>	<b>283 348</b>	<b>2,28</b>	<b>100</b>

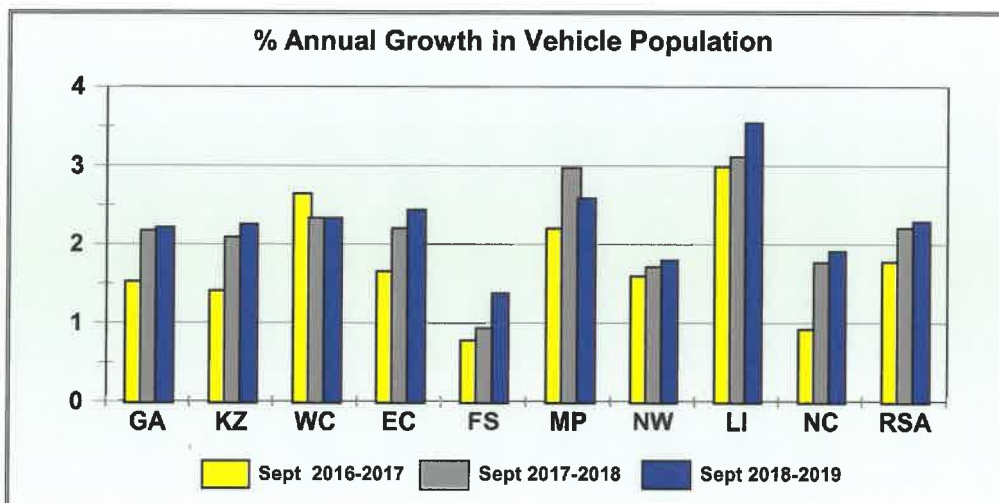
**Table 5: Number of registered vehicles per province**



The number of registered vehicles per province show the highest increase (percentage change) recorded for Limpopo with an increase of 3.54% from 708 770 in 2018 to 733 857 followed closely by Mpumalanga, with an increase of 2.58% from 895 461 to 918 601.



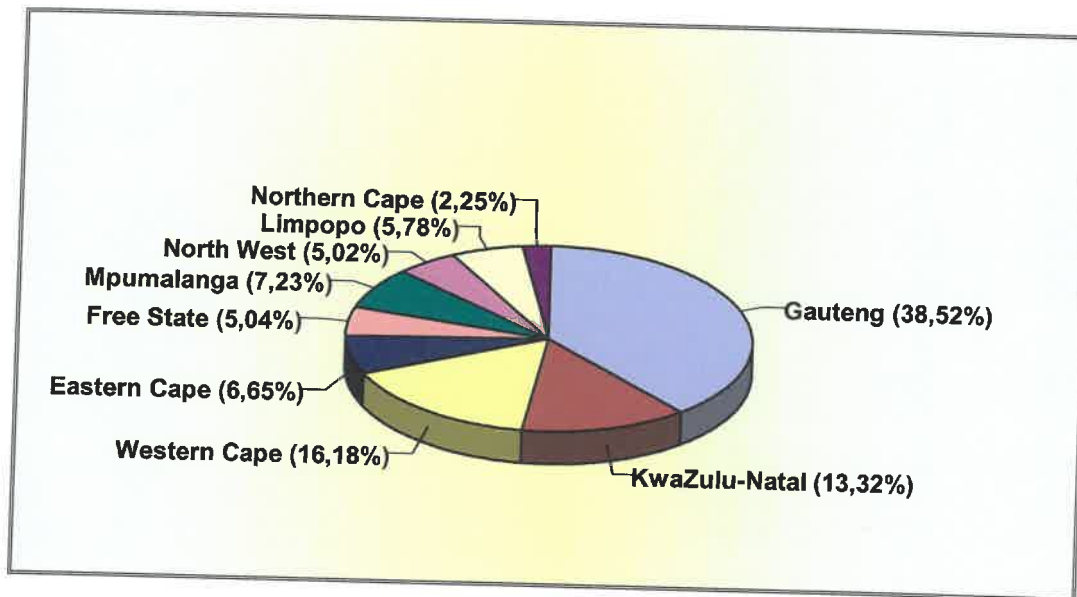
**Figure 22: Percentage Annual Growth in Vehicle Population**



**Figure 23: Percentage Annual Growth in Vehicle Population**



The percentage vehicles registered per province as on 30 September 2019 is reflected in the figure below.



**Figure 24: Percentage Vehicles Registered per Province**

The information in the figure above shows that 38.52% of all vehicles were registered in Gauteng; 16.18% in Western Cape and 13.32% in Kwa-Zulu Natal.

More detailed information on the number of vehicles per type registered per Province for September 2018 and September 2019 is given in the table under **Appendix A**.

### 5.1.2 Human Population and Mobility

The estimated human population for each year from 2016 to 2019 is given in table below. (These figures are estimates from the mid-year estimates released annually by Stats SA).

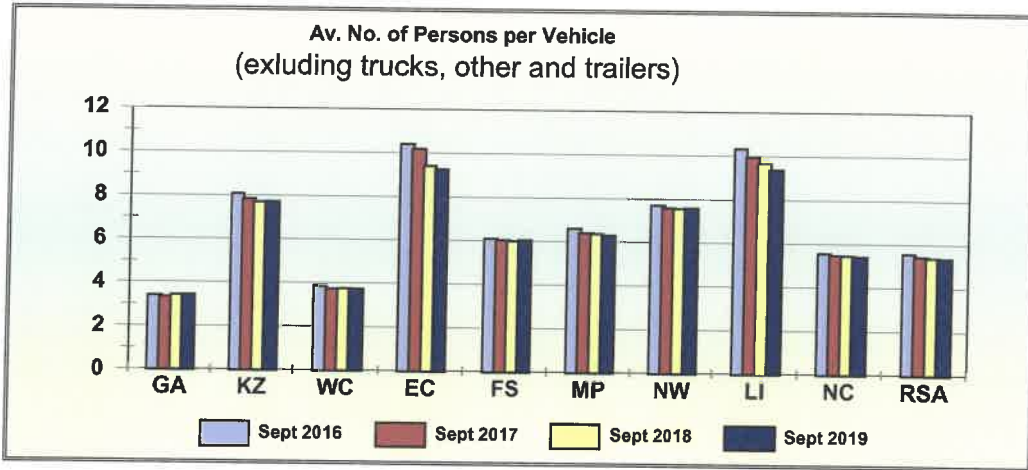
Month	Province									Total RSA
	GA	KZ	WC	EC	FS	MP	NW	LI	NC	
<b>Sept 2016</b>	13,51	11,22	6,32	7,11	2,86	4,38	3,77	5,86	1,20	<b>56,23</b>
<b>Sept 2017</b>	13,55	11,16	6,32	7,10	2,87	4,35	3,79	5,84	1,20	<b>56,18</b>
<b>Sept 2018</b>	14,20	11,22	6,50	6,72	2,88	4,46	3,86	5,85	1,22	<b>56,90</b>
<b>Sept 2019</b>	14,60	11,51	6,61	6,77	2,95	4,54	3,96	5,89	1,23	<b>58,07</b>

**Table 6: Estimated mid-month human population per province – million**

Based on the information on human and vehicle populations, the average number of persons per vehicle per Province (excluding trucks, towed vehicles and “other” and “unknown” vehicles) at the end of September 2016, 2017, 2018 and 2019 is shown in the table and reflected in the figure below.

Month	GA	KZ	WC	EC	FS	MP	NW	LI	NC	RSA
<b>Sept 2016</b>	3,37	8,07	3,83	10,40	6,09	6,59	7,70	10,32	5,55	<b>5,54</b>
<b>Sept 2017</b>	3,32	7,83	3,72	10,18	6,03	6,39	7,58	9,95	5,47	<b>5,42</b>
<b>Sept 2018</b>	3,40	7,69	3,75	9,41	5,98	6,37	7,55	9,64	5,45	<b>5,37</b>
<b>Sept 2019</b>	3,42	7,71	3,73	9,25	6,03	6,28	7,58	9,37	5,40	<b>5,35</b>

**Table 7: Average number of persons per vehicle (excluding trucks, other, unknown and towed vehicles)**

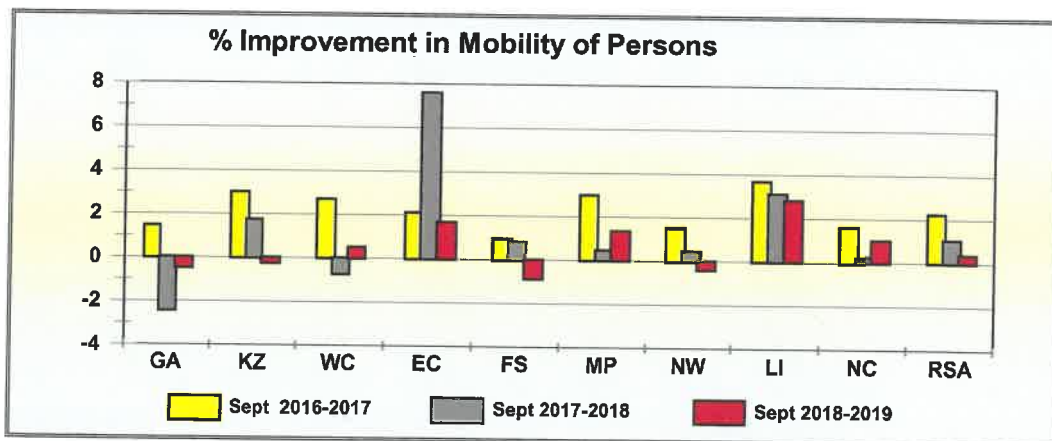


**Figure 25: Average number of persons per vehicle (excluding trucks, other and trailer)**

The percentage annual change or improvement in human mobility per province is reflected in table below.

Month	Province									Total RSA
	GA	KZ	WC	EC	FS	MP	NW	LI	NC	
<b>Sept 2016-2017</b>	1,45	3,00	2,69	2,10	0,93	2,98	1,49	3,66	1,60	<b>2,21</b>
<b>Sept 2017-2018</b>	-2,40	1,74	-0,66	7,60	0,79	0,46	0,44	3,10	0,24	<b>1,04</b>
<b>Sept 2018-2019</b>	-0,46	-0,18	0,50	1,68	-0,80	1,34	-0,39	2,80	1,02	<b>0,37</b>

**Table 8: Percentage improvement in mobility per province**



**Figure 26: Percentage improvement in mobility of persons**

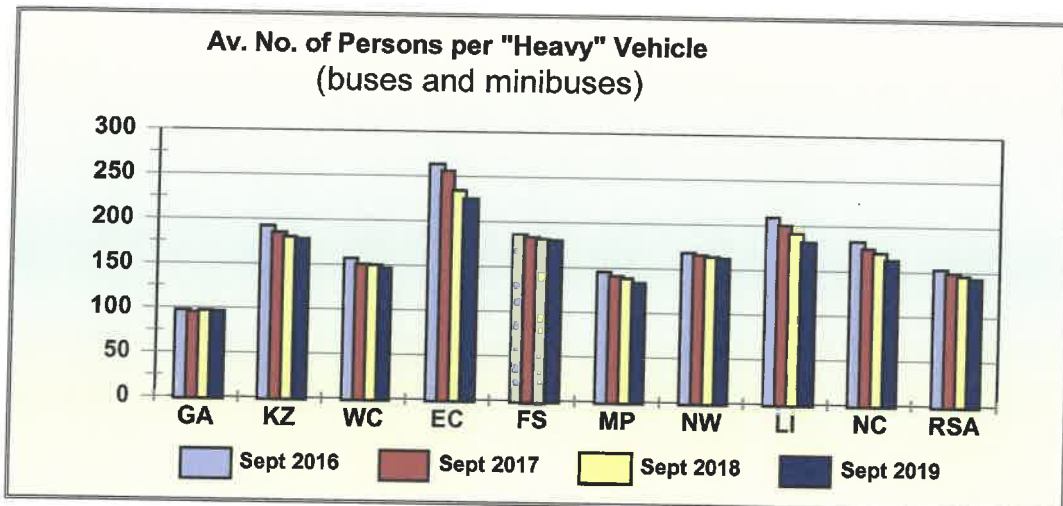
The information in tables and figures above shows that on a national basis the general overall mobility in terms of the number of persons per road vehicle (vehicles that can reasonably transport passengers – motorcars, minibuses, buses, motorcycles and LDV’s “bakkies”), improved by 1.04% from a national average of 5.42 persons per vehicle at the end of September 2017 to 5.37 persons per vehicle at the end of September 2018. As from the end of September 2018 to September 2019 the improvement shows a decrease of 0.37%, from 5.37 to 5.35 persons per vehicle.

Although they do show some improvement, the “least mobile” Provinces remain Limpopo with 9.35 persons per vehicle; followed by the Eastern Cape with 9.25 persons per vehicle at the end of September 2019. The “most mobile” Provinces are Kwa-Zulu Natal and the North West with an average of 7.71 and 7.58 persons per vehicle respectively at the end of September 2019.

The average number of persons per “heavy” road passenger transport vehicle (buses and minibuses) is shown in table below and reflected in the figure below.

Month	GA	KZ	WC	EC	FS	MP	NW	LI	NC	RSA
<b>Sept 2016</b>	97	193	157	264	186	145	168	209	183	<b>153</b>
<b>Sept 2017</b>	95	185	150	256	183	141	166	200	175	<b>149</b>
<b>Sept 2018</b>	97	180	150	235	181	138	164	191	170	<b>146</b>
<b>Sept 2019</b>	96	178	147	225	180	134	162	182	163	<b>143</b>

**Table 9: Average number of persons per “heavy” passenger transport vehicle (buses and minibuses)**



**Figure 27: Average number of persons per " heavy vehicles" (buses and minibuses)**

The percentage annual change or improvement in the number of persons per "heavy" passenger road transport vehicle per province is reflected in the table below.

Month	Province									Total
	GA	KZ	WC	EC	FS	MP	NW	LI	NC	
<b>Sept 2016-2017</b>	2,10	3,76	4,19	2,88	1,66	3,38	1,45	4,18	4,39	<b>2,97</b>
<b>Sept 2017-2018</b>	-1,73	2,75	0,50	8,53	1,19	1,70	1,26	4,66	2,72	<b>2,02</b>
<b>Sept 2018-2019</b>	0,75	1,16	1,95	3,89	0,60	3,31	1,09	4,89	4,62	<b>1,96</b>

**Table 10: Percentage improvement in average number of persons per " heavy" passenger transport vehicles (buses and minibuses)**

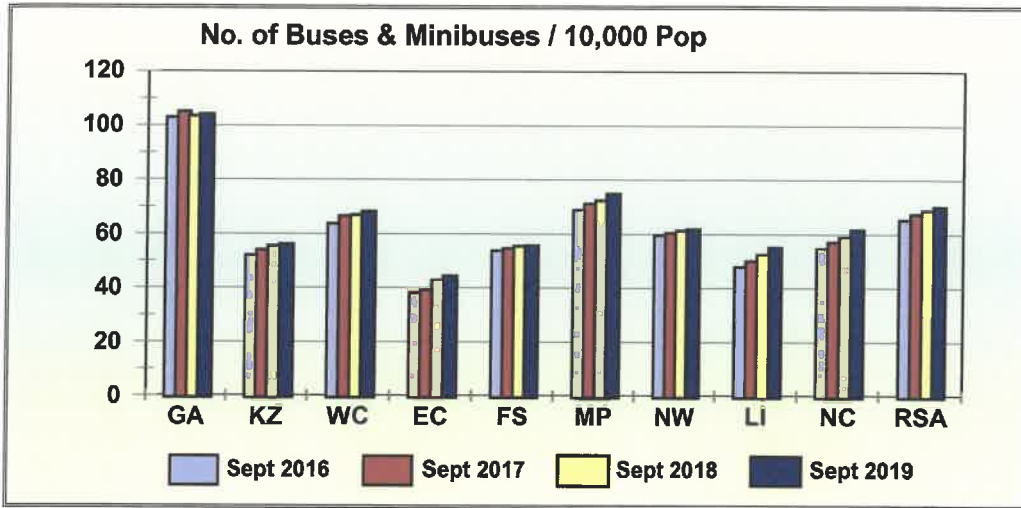
The information in tables and figure above show that, since the previous year-on-year improvement, the national overall mobility and quality of public road transport in terms of the number of persons per “heavy” passenger road transport vehicle from September 2017 to September 2018 increased by 2.02% from 149 persons per vehicle to 146 persons per vehicle. Whilst a slight improvement has been observed between 2018 and 2019 with 1.96% from 146 to 143.

On a Provincial percentage basis, the highest improvement was recorded for Limpopo where the average number of persons per vehicle changed by 4.89% from about 191 persons per vehicle in September 2018 to 182 persons per vehicle at the end of September 2019. In Northern Cape the improvement is 4.62% from 170 to 163.

The average number of “heavy” road passenger transport vehicle (buses and minibuses) per 10,000 human population per Province is shown in the table below and reflected in the figure below.

Month	GA	KZ	WC	EC	FS	MP	NW	LI	NC	RSA
<b>Sept 2016</b>	103	52	64	38	54	69	59	48	55	<b>65</b>
<b>Sept 2017</b>	105	54	66	39	55	71	60	50	57	<b>67</b>
<b>Sept 2018</b>	103	55	67	43	55	72	61	52	59	<b>69</b>
<b>Sept 2019</b>	104	56	68	44	56	75	62	55	62	<b>70</b>

**Table 11: Average number of public transport vehicles (buses and minibuses) per 10,000 human population**



**Figure 28: Number of buses and minibuses / 10,000 human population**



## 5.2 Un-Roadworthy and Un-Licensed Vehicles

### 5.2.1 General

Un-roadworthy vehicles is defined as those of which the owners failed to submit the vehicles for compulsory annual roadworthy tests (including buses, minibus taxis and freight transport vehicles) or on change of ownership. Un-licensed vehicles are those of which the owners failed to renew the vehicle licences within the time frame allowed.

On a national basis the total number of vehicles that are either un-roadworthy, un-licensed or both decreased by 64 775 (5.50%) from 1 177 497 vehicles as on 30 September 2018 to 1 112 722 vehicles as on 30 September 2019. Detail in this regard per type of vehicle is provided in the table below and the percentage (%) change from 2018 to 2019 reflected in the figure below.

Vehicle Type	Sept 2018	Sept 2019	Change	% Change
<b>Motorcars</b>	641 566	601 786	-39 780	-6,20
<b>Minibuses</b>	59 209	60 276	1 067	1,80
<b>Buses</b>	9 632	9 884	252	2,62
<b>Motorcycles</b>	67 688	61 317	-6 371	-9,41
<b>LDV's - Bakkies</b>	197 273	187 532	-9 741	-4,94
<b>Trucks</b>	64 013	64 296	283	0,44
<b>Caravans</b>	8 041	6 934	-1 107	-13,77
<b>Heavy Trailers</b>	25 697	26 436	739	2,88
<b>Light Trailers</b>	73 710	64 584	-9 126	-12,38
<b>Unknown</b>	30 668	29 677	-991	-3,23
<b>All Vehicles</b>	<b>1 177 497</b>	<b>1 112 722</b>	<b>-64 775</b>	<b>-5,50</b>

**Table 12: Number of un-roadworthy, un-licensed vehicles or both**



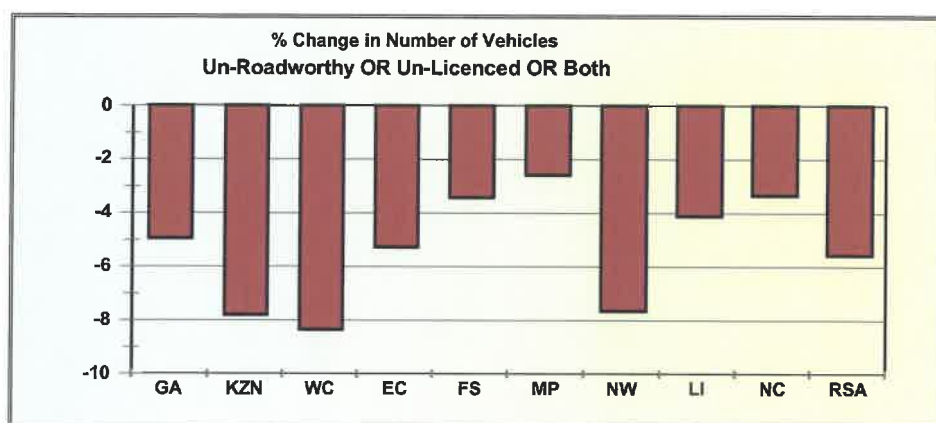
Increases were recorded for all types of vehicles in this regard. The highest decrease was recorded for caravans with 13.77% followed by light trailers with 12.38%.

Detail on the number of vehicles that are either un-roadworthy, un-licenced or both per Province is provided in the table below and the percentage (%) change from 2018 to 2019 reflected in the figure below.

Year	GA	KZN	WC	EC	FS	MP	NW	LI	NC	RSA
<b>Sept 2018</b>	500 936	146 580	148 688	79 226	63 849	87 810	62 848	64 454	23 106	<b>1 177 497</b>
<b>Sept 2019</b>	476 286	135 283	136 388	75 129	61 717	85 618	58 101	61 860	22 340	<b>1 112 722</b>
<b>Change</b>	-24 650	-11 297	-12 300	-4 097	-2 132	-2 192	-4 747	-2 594	-766	<b>-64 775</b>
<b>% Change</b>	-4,92	-7,71	-8,27	-5,17	-3,34	-2,50	-7,55	-4,02	-3,32	<b>-5,50</b>

**Table 13: Number of vehicles that are un-roadworthy or un-licenced or both**

The information in tables and figures above shows that all provinces recorded a decrease in this regard. On a provincial level the highest percentage change decrease has been recorded for Western Cape with 8.27% followed by KwaZulu Natal with 7.71%.



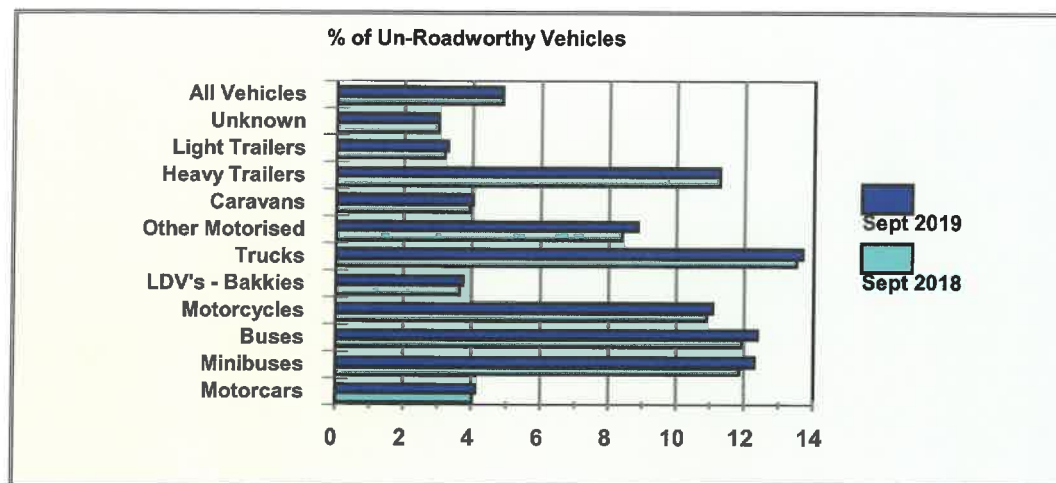
**Figure 29: Percentage change in number of vehicles un-roadworthy or un-licensed or both**

## 5.2.2 Number of Un-Roadworthy Vehicles

The number of vehicles that are un-roadworthy (but licenced) increased by 23 398 (4.00%) from 584 590 vehicles as at 30 September 2018 to 607 988 vehicles as at 30 September 2019. Detail in this regard is given in the table below and the percentage of un-roadworthy vehicles per type of vehicle, as a percentage of the number registered, is reflected in the figure below.

Vehicle Type	Sept 2018	Sept 2019	Change	% Change
<b>Motorcars</b>	287 116	297 035	9 919	3,45
<b>Minibuses</b>	38 279	41 700	3 421	8,94
<b>Buses</b>	7 607	8 014	407	5,35
<b>Motorcycles</b>	37 564	38 135	571	1,52
<b>LDV's - Bakkies</b>	90 646	94 574	3 928	4,33
<b>Trucks</b>	50 485	51 875	1 390	2,75
<b>Caravans</b>	3 870	3 880	10	0,26
<b>Heavy Trailers</b>	22 028	22 926	898	4,08
<b>Light Trailers</b>	26 583	28 390	1 807	6,80
<b>Unknown</b>	20 412	21 459	1 047	5,13
<b>All Vehicles</b>	<b>584 590</b>	<b>607 988</b>	<b>23 398</b>	<b>4,00</b>

**Table 14: Number of un-roadworthy vehicles**



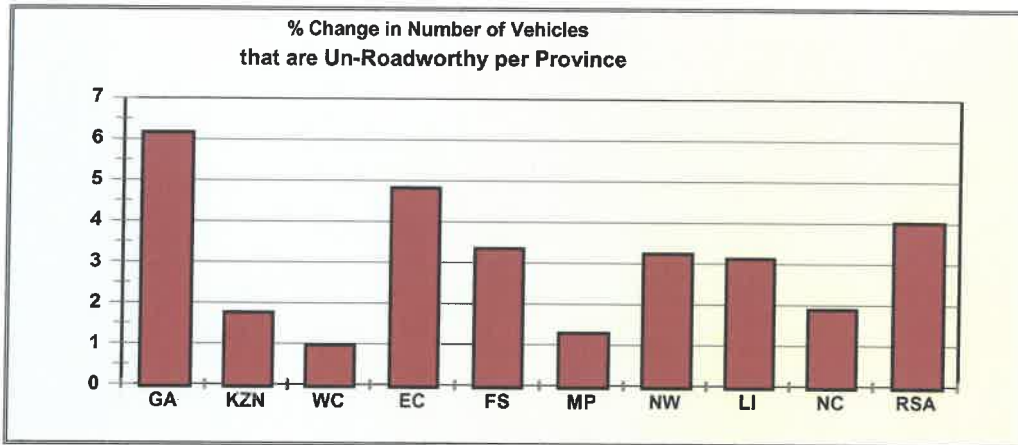
**Figure 30: Percentage of un-roadworthy vehicles**

The information in the table and figure above shows that all vehicle types recorded an increase in this regard. The highest increase for un-roadworthy vehicles was recorded for minibuses with an increase of 3 421 (8.94%) from 38 279 as at the end of September 2018 to 41 700 as at the end of September 2019.

Details with regards to the number of vehicles that are un-roadworthy per Province are provided in the table below and the percentage (%) change from 2018 to 2019 reflected in the figure below.

Year	GA	KZN	WC	EC	FS	MP	NW	LI	NC	RSA
<b>Sept 2018</b>	262 951	68 475	74 125	32 190	35 612	43 926	29 585	26 638	11 088	<b>584 590</b>
<b>Sept 2019</b>	279 143	69 672	74 836	33 740	36 801	44 489	30 542	27 468	11 297	<b>607 988</b>
<b>Change</b>	16 192	1 197	711	1 550	1 189	563	957	830	209	<b>23 398</b>
<b>% Change</b>	6,16	1,75	0,96	4,82	3,34	1,28	3,23	3,12	1,88	<b>4,00</b>

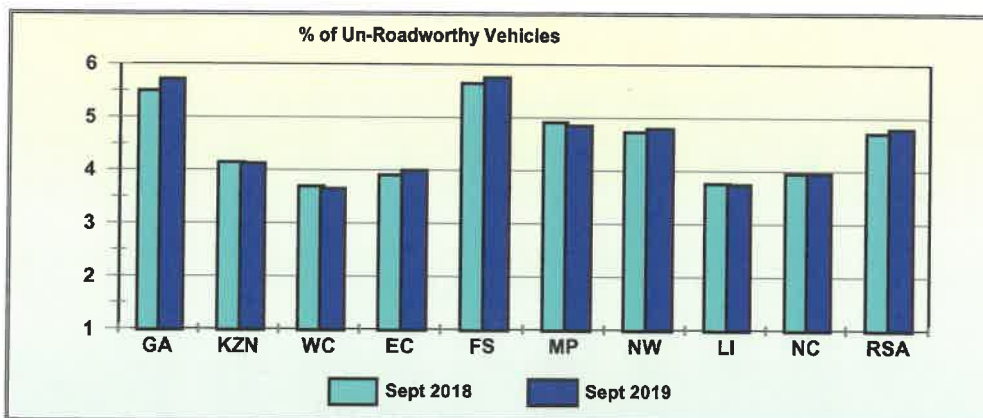
**Table 15: Number of un-roadworthy vehicles**



**Figure 31: Percentage change in number of vehicles that are un-roadworthy per province**

The information in the table and figure above shows that all provinces recorded increase in the number of un-roadworthy vehicles. On a percentage basis the highest increase was recorded in Gauteng where the number of un-roadworthy vehicles increased by 16 192 (6.16%) from 262 951 in 2018 to 279 143 as at the end of September 2019. Other increase in this regard was recorded in Eastern Cape with an increase of 4.82%.

The percentage of un-roadworthy vehicles per Province, expressed as a percentage of the total number of vehicles registered per province, is shown in the figure below.



**Figure 32: Percentage of un-roadworthy vehicles**

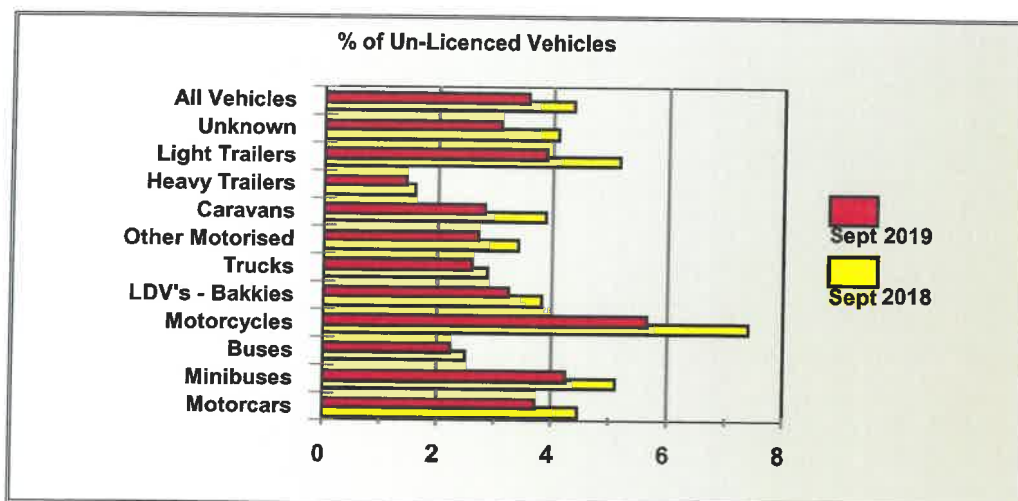
### 5.2.3 Number of Un-Licensed Vehicles

On a national basis the number of un-licensed vehicles decreased by 83 728 (15.72%) from 532 713 vehicles as at 30 September 2018 to 448 985 vehicles as at 30 September 2019.

Detail per type of vehicle in this regard is given in the table below and the percentage of un-licensed vehicles per type of vehicle, as a percentage of the number registered, is reflected in the figure below.

Vehicle Type	Sept 2018	Sept 2019	Change	% Change
<b>Motorcars</b>	321 735	273 984	-47 751	-14,84
<b>Minibuses</b>	16 406	14 224	-2 182	-13,30
<b>Buses</b>	1 570	1 423	-147	-9,36
<b>Motorcycles</b>	25 497	19 247	-6 250	-24,51
<b>LDV's - Bakkies</b>	96 466	83 709	-12 757	-13,22
<b>Trucks</b>	10 639	9 692	-947	-8,90
<b>Caravans</b>	3 846	2 789	-1 057	-27,48
<b>Heavy Trailers</b>	3 022	2 846	-176	-5,82
<b>Light Trailers</b>	44 441	33 865	-10 576	-23,80
<b>Unknown</b>	9 091	7 206	-1 885	-20,73
<b>All Vehicles</b>	<b>532 713</b>	<b>448 985</b>	<b>-83 728</b>	<b>-15,72</b>

**Table 16: Number of un-licensed vehicles**



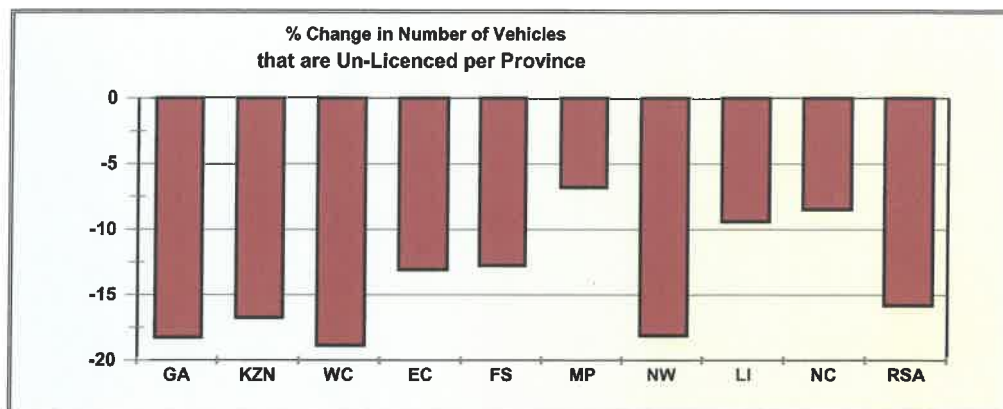
**Figure 33: Percentage of un-licensed vehicles**

The information in the table and figure above shows that all vehicle types recorded a decrease with regard to the number of un-licensed vehicles. On a percentage basis the highest decrease was recorded for caravans with 27.48% followed by motorcycles with 24.51%.

Detail on the number of vehicles that are un-licensed per Province is provided in the table below and the percentage (%) change from 2018 to 2019 reflected in the figure below.

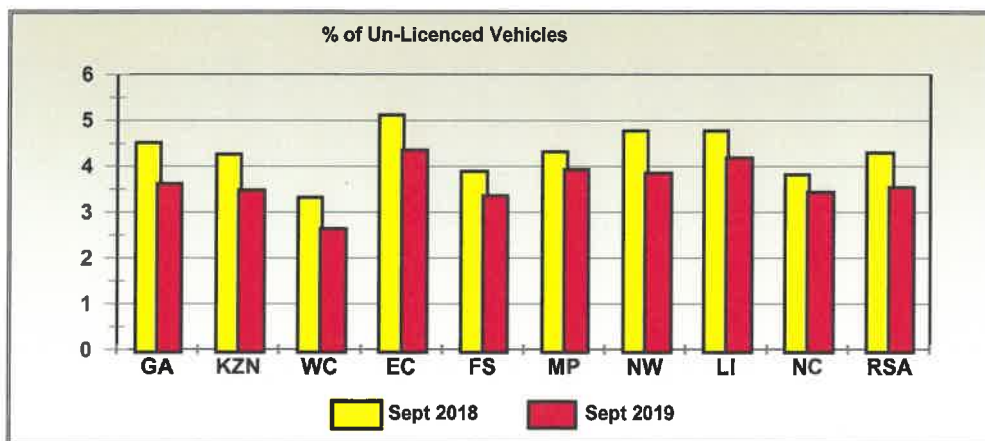
Year	GA	KZN	WC	EC	FS	MP	NW	LI	NC	RSA
<b>Sept 2018</b>	215 810	70 491	66 616	42 223	24 556	38 638	29 879	33 805	10 695	<b>532 713</b>
<b>Sept 2019</b>	176 800	58 775	54 096	36 786	21 462	36 068	24 513	30 686	9 799	<b>448 985</b>
<b>Change</b>	-39 010	-11 716	-12 520	-5 437	-3 094	-2 570	-5 366	-3 119	-896	<b>-83 728</b>
<b>% Change</b>	-18,08	-16,62	-18,79	-12,88	-12,60	-6,65	-17,96	-9,23	-8,38	<b>-15,72</b>

**Table 17: Number of un-licensed vehicles**



**Figure 34: Percentage change in number of vehicle that are un-licensed per province**

The information in the table and figure above shows that the highest decrease in the number of un-licensed vehicles were recorded in Western Cape with 18.79%, followed by Gauteng with 18.08%. The percentage of un-licensed vehicles per type of vehicle, as a percentage of the number registered per Province, is reflected in the figure below.



**Figure 35: Percentage of un-licensed vehicles**

Detailed information on the number of un-roadworthy and un-licensed vehicles per type of vehicle per Province is provided in the tables under **Appendix B**.



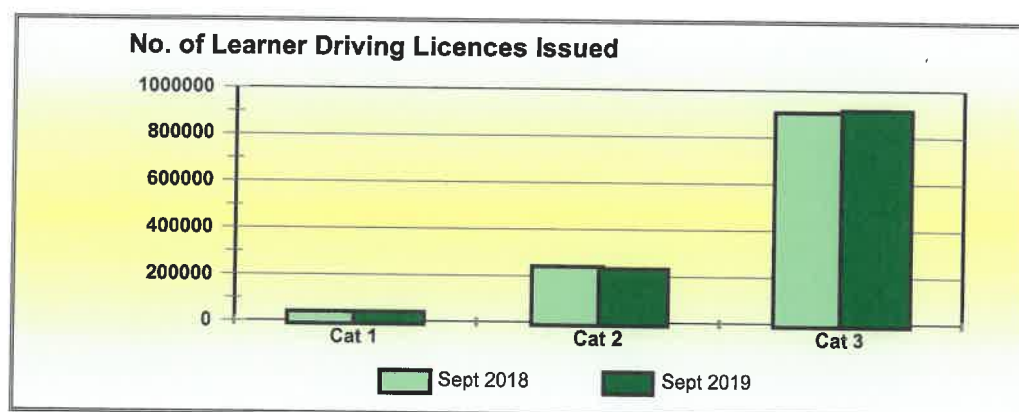
## 6 Driver Population

### 6.1 Learner Driving Licences

The number of learner driving licences issued increased by 2 038 (0.17%) from 1 182 675 as at 30 September 2018 to 1 184 713 as at 30 September 2019. Detail on the number of learner driving licences issued per category is given in table below and graphically reflected in the figure below.

Category	Sept 2018	Sept 2019	Change	% Change
1	39 422	38 679	-743	-1,88
2	238 596	230 555	-8 041	-3,37
3	904 657	915 479	10 822	1,20
<b>Total</b>	<b>1 182 675</b>	<b>1 184 713</b>	<b>2 038</b>	<b>0,17</b>

**Table 18: Number of learner licences issued**



**Figure 36: Number of learner licenses issues**

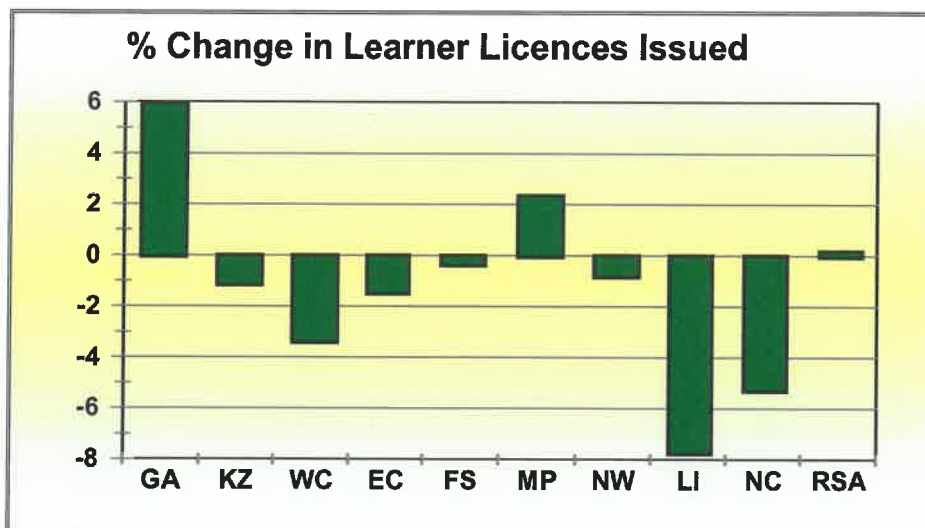
Provincial information in this regard is given in the table below and the percentage change per Province over the 12-month period is reflected in the figure below.



Year	GA	KZ	WC	EC	FS	MP	NW	LI	NC	RSA
<b>Sept 2018</b>	330 565	195 288	182 649	102 446	67 016	105 034	61 808	107 900	29 969	<b>1 182 675</b>
<b>Sept 2019</b>	350 238	193 138	176 662	100 971	66 851	107 493	61 324	99 623	28 413	<b>1 184 713</b>
<b>Change</b>	19 673	-2 150	-5 987	-1 475	-165	2 459	-484	-8 277	-1 556	<b>2 038</b>
<b>% Change</b>	5,95	-1,10	-3,28	-1,44	-0,25	2,34	-0,78	-7,67	-5,19	<b>0,17</b>

**Table 19: Number of learners licences issued per province**

Most provinces recorded a decrease with regards to the number of Learner Licences issued with exception of Gauteng. The highest decrease was recorded for Limpopo with 7.67% followed by Northern Cape with 5.19%.



**Figure 37: Percentage change in learner licenses issued per province**

## 6.2 Driving Licences Issued and Expired

### 6.2.1 Number of Driving Licences Issued

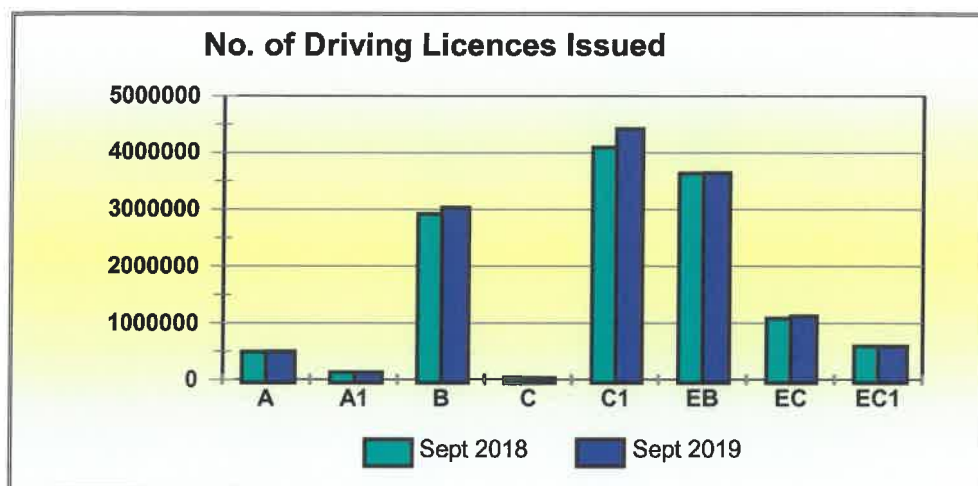
The number of driving licences issued increased by 489 708 (3.79%) from 12 933 975 as at 30 September 2018 to 13 423 683 as of 30 September 2019. Details on the number of driving licences issued per category is given in table and graphically reflected in the figure below.

Category	Sept 2018	Sept 2019	Change	% Change
<b>A</b>	483 698	490 698	7 000	1,45
<b>A1</b>	122 670	122 628	-42	-0,03
<b>B</b>	2 915 180	3 028 017	112 837	3,87
<b>C</b>	23 377	24 051	674	2,88
<b>C1</b>	4 088 232	4 413 306	325 074	7,95
<b>EB</b>	3 635 811	3 639 972	4 161	0,11
<b>EC</b>	1 078 310	1 119 659	41 349	3,83
<b>EC1</b>	586 697	585 352	-1 345	-0,23
<b>Total</b>	<b>12 933 975</b>	<b>13 423 683</b>	<b>489 708</b>	<b>3,79</b>

**Table 20: Number of driving licences issued**

#### Driving licences:

<b>A</b>	Motorcycle > 125 cub.cm	<b>A1</b>	Motorcycle < 125 cub.cm	<b>B</b>	Motor vehicle < 3,5000 kg
<b>C</b>	Motorvehicle > 16,000 kg	<b>C1</b>	Motor vehicle 3,500 - 16,000 kg	<b>EB</b>	Articulated motor vehicle <16,000 kg
		<b>EC</b>	Articulated vehicle > 16,000 kg	<b>EC1</b>	Articulated vehicle 3,500 - 16,000 kg



**Figure 38: Number of driving licenses issued**

The information contained in the table above depicts that the highest percentage change was recorded for Categories C1, B, and EC with percentages of 7.95%, 3.87% and 3.83% respectively.

The number and percentage (%) of driving licences issued per category at the end of September 2019 is reflected in the table below.

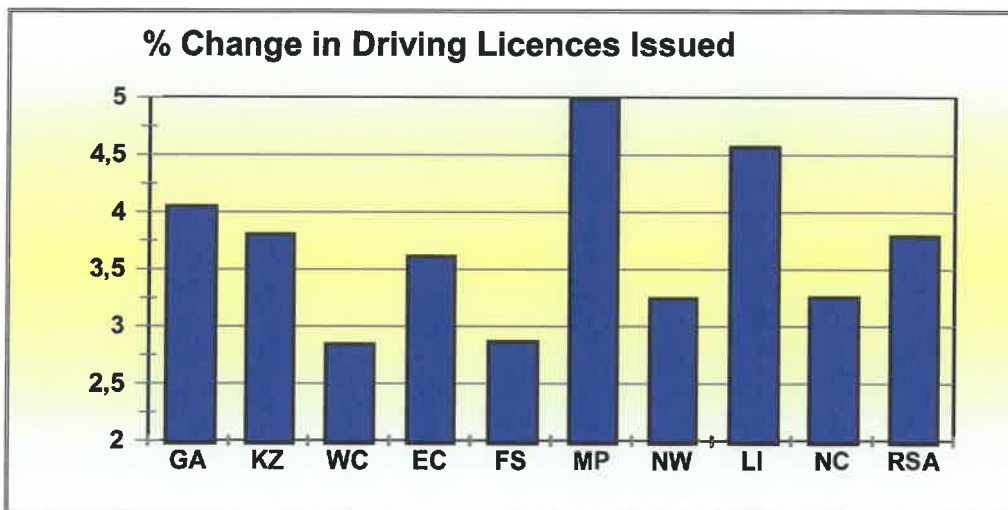
Category	Description	Number	%
<b>A</b>	Motorcycle > 125 cub.cm	490 698	3,66
<b>A1</b>	Motorcycle < 125 cub.cm	122 628	0,91
<b>B</b>	Motor vehicle < 3,5000 kg	3 028 017	22,56
<b>C</b>	Motor vehicle >16,000 kg	24 051	0,18
<b>C1</b>	Motor vehicle 3,500 - 16,000 kg	4 413 306	32,88
<b>EB</b>	Articulated motor vehicle < 16,000 kg	3 639 972	27,12
<b>EC</b>	Articulated vehicle > 16,000 kg	1 119 659	8,34
<b>EC1</b>	Articulated vehicle 3,500 - 16,000 kg	585 352	4,36
<b>Total</b>		<b>13 423 683</b>	<b>100</b>

**Table 21: Number and percentage of driving licences issued per category**

Provincial information in this regard is given in the table below and the percentage change with regard to all licences issued per province is reflected in the figure below.

Year	GA	KZ	WC	EC	FS	MP	NW	LI	NC	RSA
<b>Sept 2018</b>	4 490 009	2 074 596	1 973 619	947 987	646 618	950 457	615 096	994 437	241 156	<b>12 933 975</b>
<b>Sept 2019</b>	4 671 575	2 153 411	2 029 673	982 180	665 125	997 868	635 025	1 039 831	248 995	<b>13 423 683</b>
<b>Change</b>	181 566	78 815	56 054	34 193	18 507	47 411	19 929	45 394	7 839	<b>489 708</b>
<b>% Change</b>	4,04	3,80	2,84	3,61	2,86	4,99	3,24	4,56	3,25	<b>3,79</b>

**Table 22: Number of driving licences issued per province**



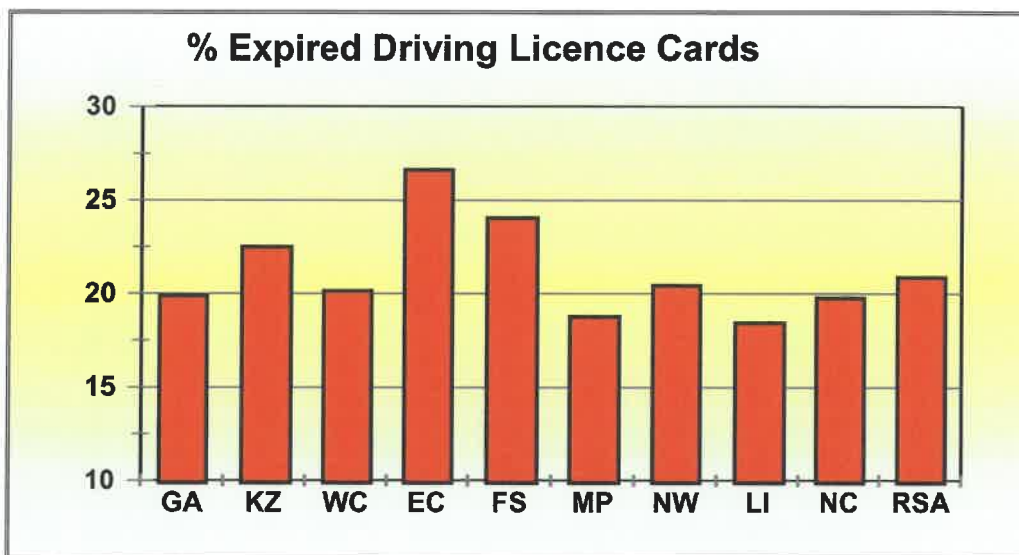
**Figure 39: Percentage change in driving licenses issued**

### 6.3 Number of Driving Licence Cards Expired

The information in Table below shows that as at 30 September 2019 there were 2 799 340 expired driving licence cards recorded on the National Traffic Information System (NaTIS). This figure represents 20,85% of all driving licences issued. This information is also reflected in the figure below.

Category	GA	KZ	WC	EC	FS	MP	NW	LI	NC	RSA
<b>On system</b>	4 671 575	2 153 411	2 029 673	982 180	665 125	997 868	635 025	1 039 831	248 995	<b>13 423 683</b>
<b>Not expired</b>	3 743 376	1 669 593	1 621 033	720 935	505 261	810 790	505 370	848 163	199 822	<b>10 624 343</b>
<b>Expired</b>	928 199	483 818	408 640	261 245	159 864	187 078	129 655	191 668	49 173	<b>2 799 340</b>
<b>% Expired</b>	19,87	22,47	20,13	26,60	24,04	18,75	20,42	18,43	19,75	<b>20,85</b>

**Table 23: Number of driving licences cards issued and expired per province 2019**



**Figure 40: Percentage expired driving license cards**

### 6.3.1 Professional Driving Permits Issued and Expired

#### 6.3.1.1 Number of Professional Driving Permits Issued

The number of Professional Driving Permits (PrDP's) issued increased by 23 913 (2.20%) from 1 086 476 as at 30 September 2018 to 1 110 389 as at 30 September 2019. Detail on the number of PrDPs issued per category is given in table below and graphically reflected in the figure below.

Category	Sept 2018	Sept 2019	Change	% Change
<b>G</b>	8 687	8 073	-614	-7,07
<b>P G</b>	1 035 495	1 058 296	22 801	2,20
<b>D G</b>	168	142	-26	-15,48
<b>D P G</b>	42 126	43 878	1 752	4,16
<b>Total</b>	<b>1 086 476</b>	<b>1 110 389</b>	<b>23 913</b>	<b>2,20</b>

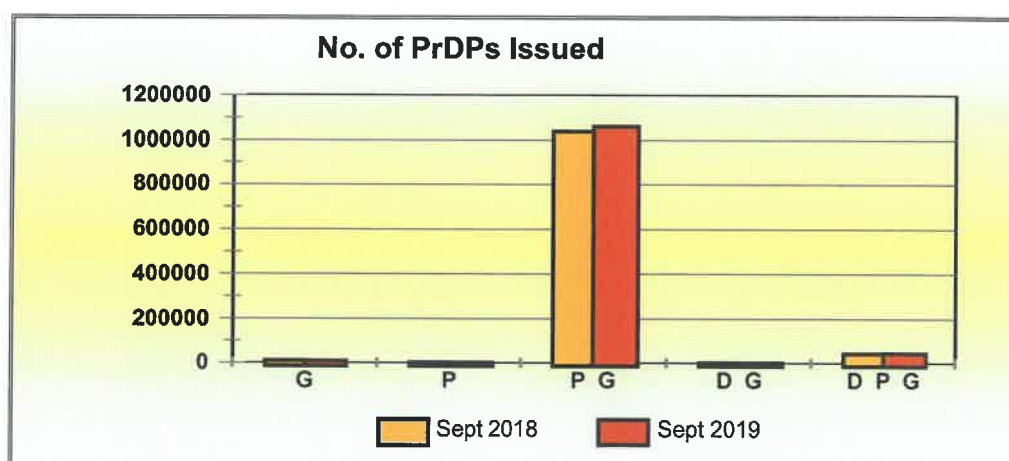
**Table 24: Number of PrDP's issued**

#### Professional Driving Permits (PrDPs)

G: Goods

P: Passengers

D: Dangerous goods

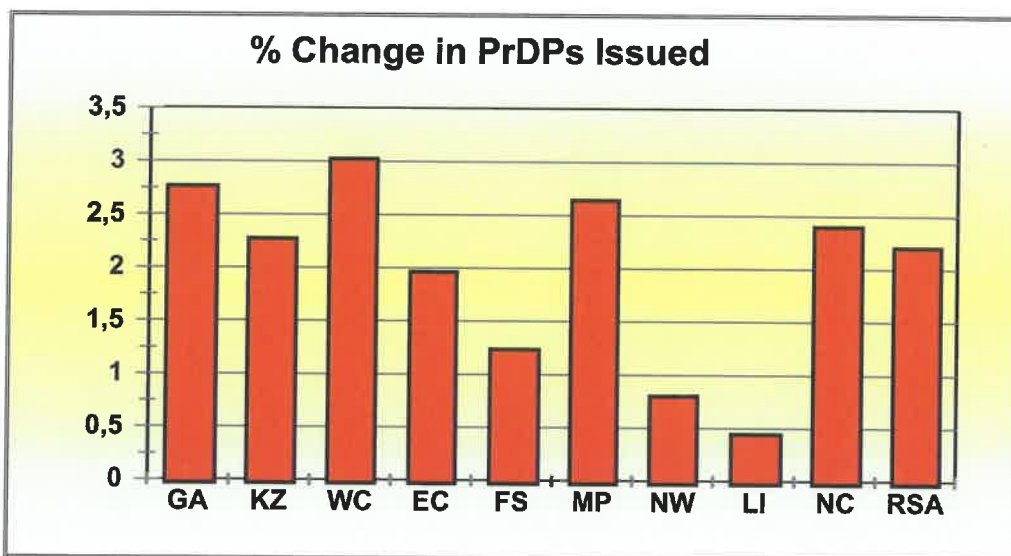


**Figure 41: Number of PrDP's issued**

Provincial information in this regard is given in the table below and the percentage change with regard to all categories of PrDP's issued per Province is reflected in the figure below.

Year	GA	KZ	WC	EC	FS	MP	NW	LI	NC	RSA
<b>Sept 2018</b>	290 358	192 733	154 892	89 524	66 568	105 011	53 701	108 470	25 219	<b>1 086 476</b>
<b>Sept 2019</b>	298 373	197 103	159 567	91 276	67 387	107 780	54 130	108 950	25 823	<b>1 110 389</b>
<b>Change</b>	8 015	4 370	4 675	1 752	819	2 769	429	480	604	<b>23 913</b>
<b>% Change</b>	2,76	2,27	3,02	1,96	1,23	2,64	0,80	0,44	2,40	<b>2,20</b>

**Table 25: Number of professional driving permits (PrDP's) issued per province**



**Figure 42: Percentage in PrDP's issued**

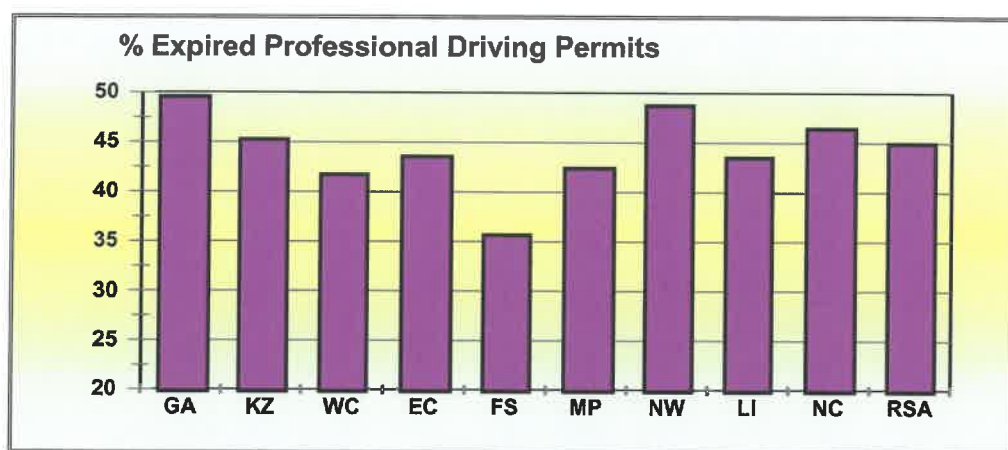


### 6.3.2 Number of Expired PrDPs

The information in table below shows that as at 30 September 2019 there were 498 280 expired Professional Driving Permits (PrDPs) recorded on the National Traffic Information System (NaTIS). This figure represents 44.87% of all PrDPs issued. This information is also reflected in the figure below.

Category	GA	KZ	WC	EC	FS	MP	NW	LI	NC	RSA
<b>On system</b>	298 373	197 103	159 567	91 276	67 387	107 780	54 130	108 950	25 823	<b>1 110 389</b>
<b>Not expired</b>	150 693	108 025	93 055	51 556	43 400	62 124	27 768	61 646	13 842	<b>612 109</b>
<b>Expired</b>	147 680	89 078	66 512	39 720	23 987	45 656	26 362	47 304	11 981	<b>498 280</b>
<b>% Expired</b>	49,50	45,19	41,68	43,52	35,60	42,36	48,70	43,42	46,40	<b>44,87</b>

**Table 26: Number of professional driving permits (PrDP's) issued and expired per province 2019**




**Figure 43: Percentage expired professional driving permits**

The highest increase for expired PrDPs were recorded in Gauteng, North West and Northern Cape with 49.50%, 48.70% and 46.40% respectively. Detailed information on the number of learner licences, driving licences and PrDPs per Province is provided in the tables under **Appendix C**.



**Reviewed and Supported by**



.....

**Mr Kevin Kara-vala**  
**DH: RTIS**

21/10/2019  
.....

**Date**

**Recommended by**



.....

**Adv. Makhosini Msibi**  
**CEO**

23/10/2019  
.....

**Date**

**Approved by**



.....

**Mr Zola Majavu CD (SA)**  
**Chairman of the Board**

23/10/2019  
.....

**Date**

## APPENDIX A

Sept 2018	Number of Registered Vehicles per Province									Total RSA
	GA	KZ	WC	EC	FS	MP	NW	LI	NC	
<b>Motorised Veh's</b>										
Motorcars	3 052 713	1 001 289	1 274 181	457 982	315 368	430 342	320 582	336 018	128 569	7 317 044
Minibuses	126 040	54 318	36 349	24 273	12 763	24 010	19 351	23 897	5 418	326 419
Buses	20 760	7 917	7 100	4 362	3 165	8 282	4 216	6 692	1 723	64 217
Motorcycles	141 396	31 378	84 962	21 906	18 764	18 615	13 244	9 127	8 026	347 418
LDV's - Bakkies	834 149	363 582	331 666	205 399	131 016	219 544	153 338	230 837	79 468	2 548 999
Trucks	138 234	48 994	44 612	22 210	21 981	47 716	17 816	25 189	9 181	375 933
Other & Unkwn	38 326	33 659	41 390	17 974	37 373	29 614	24 092	18 455	10 025	250 906
<b>Sub-Total</b>	<b>4 351 618</b>	<b>1 541 137</b>	<b>1 820 260</b>	<b>754 106</b>	<b>540 430</b>	<b>778 123</b>	<b>552 639</b>	<b>650 215</b>	<b>242 410</b>	<b>11 230 936</b>
<b>Towed Veh's</b>										
Caravans	38 507	7 194	18 130	5 167	7 531	10 066	6 327	5 529	2 753	101 204
Heavy Trailers	60 795	23 480	22 019	7 150	18 478	40 209	11 046	9 177	5 719	198 073
Light Trailers	334 851	81 950	146 683	57 306	63 314	65 168	53 714	42 651	28 946	874 583
Unknown	2 411	1 505	2 213	1 521	1 955	1 896	2 210	1 199	669	15 577
<b>Sub-Total</b>	<b>436 564</b>	<b>114 129</b>	<b>189 045</b>	<b>71 144</b>	<b>91 278</b>	<b>117 339</b>	<b>73 297</b>	<b>58 556</b>	<b>38 087</b>	<b>1 189 437</b>
<b>All Vehicles</b>	<b>4 788 182</b>	<b>1 655 265</b>	<b>2 009 304</b>	<b>825 250</b>	<b>631 707</b>	<b>895 461</b>	<b>625 936</b>	<b>708 770</b>	<b>280 497</b>	<b>12 420 372</b>

Sept 2019	Number of Registered Vehicles per Province									Total RSA
	GA	KZ	WC	EC	FS	MP	NW	LI	NC	
<b>Motorised Veh's</b>										
Motorcars	3 123 429	1 025 722	1 301 597	470 572	321 709	444 234	328 607	348 194	131 230	7 495 294
Minibuses	131 416	56 591	37 790	25 403	13 120	25 455	20 242	25 402	5 775	341 194
Buses	20 638	8 030	7 250	4 641	3 316	8 528	4 229	6 988	1 788	65 408
Motorcycles	141 160	31 042	85 918	21 739	18 388	18 363	12 913	9 049	7 944	346 516
LDV's - Bakkies	855 702	372 713	339 054	209 871	133 001	226 221	156 524	238 832	81 062	2 612 980
Trucks	139 868	49 782	46 664	22 494	22 021	47 434	17 438	26 402	9 045	381 148
Other & Unkwn	38 891	33 341	42 107	18 418	37 012	29 348	23 403	18 597	10 134	251 249
<b>Sub-Total</b>	<b>4 451 104</b>	<b>1 577 221</b>	<b>1 860 380</b>	<b>773 138</b>	<b>548 567</b>	<b>799 583</b>	<b>563 356</b>	<b>673 464</b>	<b>246 978</b>	<b>11 493 789</b>
<b>Towed Veh's</b>										
Caravans	37 770	7 068	18 338	5 154	7 367	9 990	6 190	5 504	2 738	100 119
Heavy Trailers	63 026	23 895	24 839	7 358	18 871	40 778	11 019	9 973	5 699	205 458
Light Trailers	339 736	82 872	150 298	58 153	63 657	66 417	54 458	43 731	29 762	889 084
Unknown	2 336	1 468	2 198	1 536	1 909	1 834	2 136	1 185	670	15 270
<b>Sub-Total</b>	<b>442 868</b>	<b>115 303</b>	<b>195 673</b>	<b>72 201</b>	<b>91 804</b>	<b>119 019</b>	<b>73 803</b>	<b>60 393</b>	<b>38 869</b>	<b>1 209 931</b>
<b>All Vehicles</b>	<b>4 893 971</b>	<b>1 692 524</b>	<b>2 056 052</b>	<b>845 339</b>	<b>640 371</b>	<b>918 601</b>	<b>637 158</b>	<b>733 857</b>	<b>285 847</b>	<b>12 703 720</b>

% Change Sep 2018-2019	Number of Registered Vehicles per Province									Total RSA
	GA	KZ	WC	EC	FS	MP	NW	LI	NC	
	<b>Motorised Vehicles</b>									
Motorcars	2,32	2,44	2,15	2,75	2,01	3,23	2,50	3,62	2,07	2,44
Minibuses	4,27	4,18	3,96	4,66	2,80	6,02	4,60	6,30	6,59	4,53
Buses	-0,59	1,43	2,11	6,40	4,77	2,97	0,31	4,42	3,77	1,85
Motorcycles	-0,17	-1,07	1,13	-0,76	-2,00	-1,35	-2,50	-0,85	-1,02	-0,26
LDV's - Bakkies	2,58	2,51	2,23	2,18	1,52	3,04	2,08	3,46	2,01	2,51
Trucks	1,18	1,61	4,60	1,28	0,18	-0,59	-2,12	4,82	-1,48	1,39
Other & Unknown	1,47	-0,94	1,73	2,47	-0,96	-0,90	-2,86	0,77	1,09	0,14
<b>Sub-Total</b>	<b>2,29</b>	<b>2,34</b>	<b>2,20</b>	<b>2,52</b>	<b>1,51</b>	<b>2,76</b>	<b>1,94</b>	<b>3,58</b>	<b>1,88</b>	<b>2,34</b>
	<b>Towed Vehicles</b>									
Caravans	-1,91	-1,75	1,15	-0,25	-2,18	-0,76	-2,17	-0,45	-0,54	-1,07
Heavy Trailers	3,67	1,77	12,81	2,91	2,13	1,42	-0,24	8,67	-0,35	3,73
Light Trailers	1,46	1,13	2,46	1,48	0,54	1,92	1,39	2,53	2,82	1,66
Unknown	-3,13	-2,43	-0,68	0,99	-2,33	-3,27	-3,37	-1,13	0,15	-1,97
<b>Sub-Total</b>	<b>1,44</b>	<b>1,03</b>	<b>3,51</b>	<b>1,49</b>	<b>0,58</b>	<b>1,43</b>	<b>0,69</b>	<b>3,14</b>	<b>2,05</b>	<b>1,72</b>
<b>All Vehicles</b>	<b>2,21</b>	<b>2,25</b>	<b>2,33</b>	<b>2,43</b>	<b>1,37</b>	<b>2,58</b>	<b>1,79</b>	<b>3,54</b>	<b>1,91</b>	<b>2,28</b>

## APPENDIX B-1

Number of Un-Roadworthy Vehicles										
Sept 2018	GA	KZ	WC	EC	FS	MP	NW	LI	NC	RSA
<b>Motorised Vehicles</b>										
<b>Motorcars</b>	144 092	31 832	41 435	15 178	14 091	15 535	12 116	9 245	3 592	287 116
<b>Minibuses</b>	18 584	5 641	2 979	2 293	1 607	2 311	2 176	2 171	517	38 279
<b>Buses</b>	3 116	895	624	440	335	809	464	617	307	7 607
<b>Motorcycles</b>	17 205	3 500	6 271	1 650	2 049	3 060	1 785	1 258	786	37 564
<b>LDV's - Bakkies</b>	39 480	11 650	9 802	5 932	4 805	6 935	4 789	5 490	1 763	90 646
<b>Trucks</b>	19 395	6 257	4 310	2 897	3 919	5 655	2 856	3 395	1 801	50 485
<b>Other &amp; Unkwn</b>	2 984	2 319	1 935	1 275	3 445	2 839	2 024	1 921	766	19 508
<b>Sub-Total</b>	<b>244 856</b>	<b>62 094</b>	<b>67 356</b>	<b>29 665</b>	<b>30 251</b>	<b>37 144</b>	<b>26 210</b>	<b>24 097</b>	<b>9 532</b>	<b>531 205</b>
<b>Towed Vehicles</b>										
Caravans	1 380	339	599	147	354	449	243	236	123	3 870
Heavy Trailers	7 159	2 762	1 829	822	2 491	4 035	1 260	951	719	22 028
Light Trailers	9 424	3 131	4 257	1 467	2 398	2 197	1 747	1 288	674	26 583
Unknown	132	149	84	89	118	101	125	66	40	904
<b>Sub-Total</b>	<b>18 095</b>	<b>6 381</b>	<b>6 769</b>	<b>2 525</b>	<b>5 361</b>	<b>6 782</b>	<b>3 375</b>	<b>2 541</b>	<b>1 556</b>	<b>53 385</b>
<b>All Vehicles</b>	<b>262 951</b>	<b>68 475</b>	<b>74 125</b>	<b>32 190</b>	<b>35 612</b>	<b>43 926</b>	<b>29 585</b>	<b>26 638</b>	<b>11 088</b>	<b>584 590</b>
Sept 2019	GA	KZ	WC	EC	FS	MP	NW	LI	NC	RSA
<b>Motorised Vehicles</b>										
Motorcars	153 548	32 484	39 918	15 462	14 596	15 325	12 580	9 487	3 635	297 035
Minibuses	20 272	5 766	3 313	2 709	1 769	2 545	2 431	2 340	555	41 700
Buses	3 301	889	728	492	391	837	485	596	295	8 014
Motorcycles	17 479	3 496	6 549	1 711	2 066	2 967	1 784	1 276	807	38 135
LDV's - Bakkies	41 971	11 738	10 126	6 230	4 831	7 180	4 978	5 661	1 859	94 574
Trucks	20 066	6 503	4 545	3 135	3 980	5 714	2 797	3 389	1 746	51 875
Other & Unkwn	3 175	2 377	2 092	1 437	3 626	2 991	2 075	2 060	741	20 574
<b>Sub-Total</b>	<b>259 812</b>	<b>63 253</b>	<b>67 271</b>	<b>31 176</b>	<b>31 259</b>	<b>37 559</b>	<b>27 130</b>	<b>24 809</b>	<b>9 638</b>	<b>551 907</b>
<b>Towed Vehicles</b>										
Caravans	1 434	330	620	148	355	423	243	211	116	3 880
Heavy Trailers	7 549	2 682	2 260	835	2 563	4 046	1 202	1 041	748	22 926
Light Trailers	10 222	3 265	4 599	1 491	2 518	2 330	1 858	1 351	756	28 390
Unknown	126	142	86	90	106	131	109	56	39	885
<b>Sub-Total</b>	<b>19 331</b>	<b>6 419</b>	<b>7 565</b>	<b>2 564</b>	<b>5 542</b>	<b>6 930</b>	<b>3 412</b>	<b>2 659</b>	<b>1 659</b>	<b>56 081</b>
<b>All Vehicles</b>	<b>279 143</b>	<b>69 672</b>	<b>74 836</b>	<b>33 740</b>	<b>36 801</b>	<b>44 489</b>	<b>30 542</b>	<b>27 468</b>	<b>11 297</b>	<b>607 988</b>
% Change	GA	KZ	WC	EC	FS	MP	NW	LI	NC	RSA
<b>Motorised Vehicles</b>										
Motorcars	6,56	2,05	-3,66	1,87	3,58	-1,35	3,83	2,62	1,20	3,45
Minibuses	9,08	2,22	11,21	18,14	10,08	10,13	11,72	7,78	7,35	8,94
Buses	5,94	-0,67	16,67	11,82	16,72	3,46	4,53	-3,40	-3,91	5,35
Motorcycles	1,59	-0,11	4,43	3,70	0,83	-3,04	-0,06	1,43	2,67	1,52
LDV's - Bakkies	6,31	0,76	3,31	5,02	0,54	3,53	3,95	3,11	5,45	4,33
Trucks	3,46	3,93	5,45	8,22	1,56	1,04	-2,07	-0,18	-3,05	2,75
Other & Unkwn	6,40	2,50	8,11	12,71	5,25	5,35	2,52	7,24	-3,26	5,46
<b>Sub-Total</b>	<b>6,11</b>	<b>1,87</b>	<b>-0,13</b>	<b>5,09</b>	<b>3,33</b>	<b>1,12</b>	<b>3,51</b>	<b>2,95</b>	<b>1,11</b>	<b>3,90</b>
<b>Towed Vehicles</b>										
Caravans	3,91	-2,65	3,51	0,68	0,28	-5,79	0,00	-10,59	-5,69	0,26
Heavy Trailers	5,45	-2,90	23,56	1,58	2,89	0,27	-4,60	9,46	4,03	4,08
Light Trailers	8,47	4,28	8,03	1,64	5,00	6,05	6,35	4,89	12,17	6,80
Unknown	-4,55	-4,70	2,38	1,12	-10,17	29,70	-12,80	-15,15	-2,50	-2,10
<b>Sub-Total</b>	<b>6,83</b>	<b>0,60</b>	<b>11,76</b>	<b>1,54</b>	<b>3,38</b>	<b>2,18</b>	<b>1,10</b>	<b>4,64</b>	<b>6,62</b>	<b>5,05</b>
<b>All Vehicles</b>	<b>6,16</b>	<b>1,75</b>	<b>0,96</b>	<b>4,82</b>	<b>3,34</b>	<b>1,28</b>	<b>3,23</b>	<b>3,12</b>	<b>1,88</b>	<b>4,00</b>



## PPENDIX B-2

Number of Un-Licensed Vehicles										
Sept 2018	GA	KZ	WC	EC	FS	MP	NW	LI	NC	RSA
<b>Motorised Vehicles</b>										
<b>Motorcars</b>	137 683	42 581	43 557	24 336	13 927	20 815	16 124	17 064	5 648	321 735
<b>Minibuses</b>	7 937	2 309	1 353	1 258	504	883	961	955	246	16 406
<b>Buses</b>	537	144	118	130	69	222	159	125	66	1 570
<b>Motorcycles</b>	11 327	2 506	4 872	1 582	1 292	1 466	1 120	827	505	25 497
<b>LDV's - Bakkies</b>	31 774	14 515	8 679	9 851	4 273	8 518	6 229	10 177	2 450	96 466
<b>Trucks</b>	3 697	1 333	773	773	539	1 525	655	1 080	264	10 639
<b>Other &amp; Unkwn</b>	1 242	1 260	726	622	890	1 140	990	719	250	7 839
<b>Sub-Total</b>	194 197	64 648	60 078	38 552	21 494	34 569	26 238	30 947	9 429	480 152
<b>Towed Vehicles</b>										
<b>Caravans</b>	1 586	305	548	233	250	326	269	227	102	3 846
<b>Heavy Trailers</b>	916	415	221	99	213	572	281	215	90	3 022
<b>Light Trailers</b>	18 906	4 962	5 648	3 190	2 470	3 057	2 862	2 311	1 035	44 441
<b>Unknown</b>	205	161	121	149	129	114	229	105	39	1 252
<b>Sub-Total</b>	21 613	5 843	6 538	3 671	3 062	4 069	3 641	2 858	1 266	52 561
<b>All Vehicles</b>	215 810	70 491	66 616	42 223	24 556	38 638	29 879	33 805	10 695	532 713
Sept 2019	GA	KZ	WC	EC	FS	MP	NW	LI	NC	RSA
<b>Motorised Vehicles</b>										
<b>Motorcars</b>	114 130	35 818	36 093	21 767	12 258	19 418	13 622	15 567	5 311	273 984
<b>Minibuses</b>	6 787	1 951	1 185	1 066	472	839	835	886	203	14 224
<b>Buses</b>	471	140	112	108	59	188	158	142	45	1 423
<b>Motorcycles</b>	8 428	1 905	3 735	1 193	955	1 239	778	606	408	19 247
<b>LDV's - Bakkies</b>	26 463	12 477	7 111	8 788	3 647	8 099	5 316	9 569	2 239	83 709
<b>Trucks</b>	3 296	1 172	703	653	469	1 611	545	1 007	236	9 692
<b>Other &amp; Unkwn</b>	970	939	567	480	898	911	662	670	182	6 279
<b>Sub-Total</b>	160 545	54 402	49 506	34 055	18 758	32 305	21 916	28 447	8 624	408 558
<b>Towed Vehicles</b>										
<b>Caravans</b>	1 024	209	366	173	253	312	185	184	83	2 789
<b>Heavy Trailers</b>	868	360	194	107	210	634	193	200	80	2 846
<b>Light Trailers</b>	14 222	3 703	3 934	2 356	2 127	2 684	2 064	1 801	974	33 865
<b>Unknown</b>	141	101	96	95	114	133	155	54	38	927
<b>Sub-Total</b>	16 255	4 373	4 590	2 731	2 704	3 763	2 597	2 239	1 175	40 427
<b>All Vehicles</b>	176 800	58 775	54 096	36 786	21 462	36 068	24 513	30 686	9 799	448 985
% Change	GA	KZ	WC	EC	FS	MP	NW	LI	NC	RSA
<b>Motorised Vehicles</b>										
<b>Motorcars</b>	-17,11	-15,88	-17,14	-10,56	-11,98	-6,71	-15,52	-8,77	-5,97	-14,84
<b>Minibuses</b>	-14,49	-15,50	-12,42	-15,26	-6,35	-4,98	-13,11	-7,23	-17,48	-13,30
<b>Buses</b>	-12,29	-2,78	-5,08	-16,92	-14,49	-15,32	-0,63	13,60	-31,82	-9,36
<b>Motorcycles</b>	-25,59	-23,98	-23,34	-24,59	-26,08	-15,48	-30,54	-26,72	-19,21	-24,51
<b>LDV's - Bakkies</b>	-16,71	-14,04	-18,07	-10,79	-14,65	-4,92	-14,66	-5,97	-8,61	-13,22
<b>Trucks</b>	-10,85	-12,08	-9,06	-15,52	-12,99	5,64	-16,79	-6,76	-10,61	-8,90
<b>Other &amp; Unkwn</b>	-21,90	-25,48	-21,90	-22,83	0,90	-20,09	-33,13	-6,82	-27,20	-19,90
<b>Sub-Total</b>	-17,33	-15,83	-17,60	-11,66	-12,73	-6,53	-15,47	-8,08	-8,54	-14,91
<b>Towed Vehicles</b>										
<b>Caravans</b>	-35,44	-31,48	-33,21	-25,75	1,20	-4,29	-31,23	-18,94	-18,63	-27,48
<b>Heavy Trailers</b>	-5,24	-13,25	-12,22	8,08	-1,41	10,84	-31,32	-6,98	-11,11	-5,82
<b>Light Trailers</b>	-24,78	-25,37	-30,35	-26,14	-13,89	-12,20	-27,88	-22,07	-5,89	-23,80
<b>Unknown</b>	-31,22	-37,27	-20,66	-36,24	-11,63	16,67	-32,31	-48,57	-2,56	-25,96
<b>Sub-Total</b>	-24,79	-25,16	-29,80	-25,61	-11,69	-7,52	-28,67	-21,66	-7,19	-23,09
<b>All Vehicles</b>	-18,08	-16,62	-18,79	-12,88	-12,60	-6,65	-17,96	-9,23	-8,38	-15,72

## APPENDIX B-3

Number of Both Un-Roadworthy & Un-Licensed Vehicles										
Sept 2018	GA	KZ	WC	EC	FS	MP	NW	LI	NC	RSA
<b>Motorised Vehicles</b>										
<b>Motorcars</b>	12 223	3 979	4 916	2 798	2 080	2 585	1 628	1 842	664	32 715
<b>Minibuses</b>	2 182	679	354	285	162	250	285	271	56	4 524
<b>Buses</b>	144	41	46	43	21	59	40	40	21	455
<b>Motorcycles</b>	2 088	470	735	231	228	375	228	177	95	4 627
<b>LDV's - Bakkies</b>	3 144	1 455	1 082	1 000	567	1 089	558	1 032	234	10 161
<b>Trucks</b>	877	331	262	187	214	381	214	308	115	2 889
<b>Other &amp; Unkwn</b>	206	167	62	70	148	135	128	139	35	1 090
<b>Sub-Total</b>	<b>20 864</b>	<b>7 122</b>	<b>7 457</b>	<b>4 614</b>	<b>3 420</b>	<b>4 874</b>	<b>3 081</b>	<b>3 809</b>	<b>1 220</b>	<b>56 461</b>
<b>Towed Vehicles</b>										
<b>Caravans</b>	105	28	49	18	31	31	26	22	15	325
<b>Heavy Trailers</b>	172	86	53	20	59	114	73	39	31	647
<b>Light Trailers</b>	1 022	360	382	156	164	221	191	139	51	2 686
<b>Unknown</b>	12	18	6	5	7	6	13	2	6	75
<b>Sub-Total</b>	<b>1 311</b>	<b>492</b>	<b>490</b>	<b>199</b>	<b>261</b>	<b>372</b>	<b>303</b>	<b>202</b>	<b>103</b>	<b>3 733</b>
<b>All Vehicles</b>	<b>22 175</b>	<b>7 614</b>	<b>7 947</b>	<b>4 813</b>	<b>3 681</b>	<b>5 246</b>	<b>3 384</b>	<b>4 011</b>	<b>1 323</b>	<b>60 194</b>
Sept 2019	GA	KZ	WC	EC	FS	MP	NW	LI	NC	RSA
<b>Motorised Vehicles</b>										
<b>Motorcars</b>	11 360	3 738	4 671	2 712	1 941	2 460	1 482	1 779	624	30 767
<b>Minibuses</b>	2 092	560	340	296	200	266	278	271	49	4 352
<b>Buses</b>	128	45	53	30	26	57	52	36	20	447
<b>Motorcycles</b>	1 745	380	636	210	201	339	184	156	84	3 935
<b>LDV's - Bakkies</b>	2 813	1 271	1 040	979	469	966	561	897	253	9 249
<b>Trucks</b>	826	340	246	162	193	416	174	261	111	2 729
<b>Other &amp; Unkwn</b>	188	133	59	50	150	133	110	99	27	949
<b>Sub-Total</b>	<b>19 152</b>	<b>6 467</b>	<b>7 045</b>	<b>4 439</b>	<b>3 180</b>	<b>4 637</b>	<b>2 841</b>	<b>3 499</b>	<b>1 168</b>	<b>52 428</b>
<b>Towed Vehicles</b>										
<b>Caravans</b>	84	20	29	12	32	39	15	25	9	265
<b>Heavy Trailers</b>	166	76	61	13	72	160	51	48	17	664
<b>Light Trailers</b>	929	265	318	136	159	210	135	131	46	2 329
<b>Unknown</b>	12	8	3	3	11	15	4	3	4	63
<b>Sub-Total</b>	<b>1 191</b>	<b>369</b>	<b>411</b>	<b>164</b>	<b>274</b>	<b>424</b>	<b>205</b>	<b>207</b>	<b>76</b>	<b>3 321</b>
<b>All Vehicles</b>	<b>20 343</b>	<b>6 836</b>	<b>7 456</b>	<b>4 603</b>	<b>3 454</b>	<b>5 061</b>	<b>3 046</b>	<b>3 706</b>	<b>1 244</b>	<b>55 749</b>
% Change	GA	KZ	WC	EC	FS	MP	NW	LI	NC	RSA
<b>Motorised Vehicles</b>										
<b>Motorcars</b>	-7,06	-6,06	-4,98	-3,07	-6,68	-4,84	-8,97	-3,42	-6,02	-5,95
<b>Minibuses</b>	-4,12	-17,53	-3,95	3,86	23,46	6,40	-2,46	0,00	-12,50	-3,80
<b>Buses</b>	-11,11	9,76	15,22	-30,23	23,81	-3,39	30,00	-10,00	-4,76	-1,76
<b>Motorcycles</b>	-16,43	-19,15	-13,47	-9,09	-11,84	-9,60	-19,30	-11,86	-11,58	-14,96
<b>LDV's - Bakkies</b>	-10,53	-12,65	-3,88	-2,10	-17,28	-11,29	0,54	-13,08	8,12	-8,98
<b>Trucks</b>	-5,82	2,72	-6,11	-13,37	-9,81	9,19	-18,69	-15,26	-3,48	-5,54
<b>Other &amp; Unkwn</b>	-8,74	-20,36	-4,84	-28,57	1,35	-1,48	-14,06	-28,78	-22,86	-12,94
<b>Sub-Total</b>	<b>-8,21</b>	<b>-9,20</b>	<b>-5,53</b>	<b>-3,79</b>	<b>-7,02</b>	<b>-4,86</b>	<b>-7,79</b>	<b>-8,14</b>	<b>-4,26</b>	<b>-7,14</b>
<b>Towed Vehicles</b>										
<b>Caravans</b>	-20,00	-28,57	-40,82	-33,33	3,23	25,81	-42,31	13,64	-40,00	-18,46
<b>Heavy Trailers</b>	-3,49	-11,63	15,09	-35,00	22,03	40,35	-30,14	23,08	-45,16	2,63
<b>Light Trailers</b>	-9,10	-26,39	-16,75	-12,82	-3,05	-4,98	-29,32	-5,76	-9,80	-13,29
<b>Unknown</b>	0,00	-55,56	-50,00	-40,00	57,14	150,00	-69,23	50,00	-33,33	-16,00
<b>Sub-Total</b>	<b>-9,15</b>	<b>-25,00</b>	<b>-16,12</b>	<b>-17,59</b>	<b>4,98</b>	<b>13,98</b>	<b>-32,34</b>	<b>2,48</b>	<b>-26,21</b>	<b>-11,04</b>
<b>All Vehicles</b>	<b>-8,26</b>	<b>-10,22</b>	<b>-6,18</b>	<b>-4,36</b>	<b>-6,17</b>	<b>-3,53</b>	<b>-9,99</b>	<b>-7,60</b>	<b>-5,97</b>	<b>-7,38</b>

## PPENDIX C-1

Sept 2018		Number of Learners Licences Issued per Province								
Category	GA	KZ	WC	EC	FS	MP	NW	LI	NC	RSA
<b>1</b>	13 227	3 436	12 333	2 557	2 084	2 040	1 467	1 338	940	<b>39 422</b>
<b>2</b>	63 250	30 535	79 120	25 388	13 916	8 167	8 459	4 949	4 812	<b>238 596</b>
<b>3</b>	254 088	161 317	91 196	74 501	51 016	94 827	51 882	101 613	24 217	<b>904 657</b>
<b>Total</b>	<b>330 565</b>	<b>195 288</b>	<b>182 649</b>	<b>102 446</b>	<b>67 016</b>	<b>105 034</b>	<b>61 808</b>	<b>107 900</b>	<b>29 969</b>	<b>1 182 675</b>
Sept 2019		Number of Learners Licences Issued per Province								
Category	GA	KZ	WC	EC	FS	MP	NW	LI	NC	RSA
<b>1</b>	13 238	3 416	11 639	2 273	2 116	2 208	1 514	1 346	929	<b>38 679</b>
<b>2</b>	63 318	29 201	76 045	24 132	13 459	7 613	7 821	4 250	4 716	<b>230 555</b>
<b>3</b>	273 682	160 521	88 978	74 566	51 276	97 672	51 989	94 027	22 768	<b>915 479</b>
<b>Total</b>	<b>350 238</b>	<b>193 138</b>	<b>176 662</b>	<b>100 971</b>	<b>66 851</b>	<b>107 493</b>	<b>61 324</b>	<b>99 623</b>	<b>28 413</b>	<b>1 184 713</b>
% Change		Number of Learners Licences Issued per Province								
Category	GA	KZ	WC	EC	FS	MP	NW	LI	NC	RSA
<b>1</b>	0,08	-0,58	-5,63	-11,11	1,54	8,24	3,20	0,60	-1,17	<b>-1,88</b>
<b>2</b>	0,11	-4,37	-3,89	-4,95	-3,28	-6,78	-7,54	-14,12	-2,00	<b>-3,37</b>
<b>3</b>	7,71	-0,49	-2,43	0,09	0,51	3,00	0,21	-7,47	-5,98	<b>1,20</b>
<b>Total</b>	<b>5,95</b>	<b>-1,10</b>	<b>-3,28</b>	<b>-1,44</b>	<b>-0,25</b>	<b>2,34</b>	<b>-0,78</b>	<b>-7,67</b>	<b>-5,19</b>	<b>0,17</b>

### Learner Licences :

Category 1 : Motorcycle

Category 2 : Light Motor Vehicle

Category 3 : Heavy Motor Vehicle



## APPENDIX C-2

Sept 2018		Number of Driving Licences Issued per Province								
Category	GA	KZ	WC	EC	FS	MP	NW	LI	NC	RSA
<b>A1</b>	176 630	61 347	116 656	34 861	26 392	23 159	19 881	15 255	9 517	483 698
<b>A</b>	43 668	13 018	28 821	9 156	8 889	6 544	6 338	3 813	2 423	122 670
<b>B</b>	1 070 348	472 191	612 757	241 248	147 055	123 692	117 623	77 220	53 046	2 915 180
<b>EB</b>	4 783	4 915	5 033	1 178	532	2 944	1 706	1 833	453	23 377
<b>C1</b>	1 377 714	693 994	223 850	227 680	170 546	466 071	234 569	620 614	73 194	4 088 232
<b>EC1</b>	1 285 931	575 854	811 196	312 897	175 597	159 140	140 914	109 094	65 188	3 635 811
<b>C</b>	312 113	183 589	125 050	74 582	82 484	116 764	57 043	100 762	25 923	1 078 310
<b>EC</b>	218 822	69 688	50 256	46 385	35 123	52 143	37 022	65 846	11 412	586 697
<b>Total</b>	<b>4 490 009</b>	<b>2 074 596</b>	<b>1 973 619</b>	<b>947 987</b>	<b>646 618</b>	<b>950 457</b>	<b>615 096</b>	<b>994 437</b>	<b>241 156</b>	<b>12 933 975</b>
Sept 2019		Number of Driving Licences Issued per Province								
Category	GA	KZ	WC	EC	FS	MP	NW	LI	NC	RSA
<b>A1</b>	178 919	61 949	119 571	35 347	26 519	23 335	19 957	15 499	9 602	490 698
<b>A</b>	43 541	13 012	29 104	9 177	8 824	6 511	6 259	3 812	2 388	122 628
<b>B</b>	1 118 904	485 726	639 027	250 858	152 489	126 595	120 627	78 994	54 797	3 028 017
<b>EB</b>	4 894	4 933	5 323	1 216	540	3 101	1 720	1 844	480	24 051
<b>C1</b>	1 496 742	750 742	240 857	248 561	181 913	504 727	251 232	659 678	78 854	4 413 306
<b>EC1</b>	1 285 521	575 677	816 895	313 731	175 267	158 511	140 258	109 059	65 053	3 639 972
<b>C</b>	324 934	191 773	128 722	76 835	84 622	123 023	58 347	104 989	26 414	1 119 659
<b>EC</b>	218 120	69 599	50 174	46 455	34 951	52 065	36 625	65 956	11 407	585 352
<b>Total</b>	<b>4 671 575</b>	<b>2 153 411</b>	<b>2 029 673</b>	<b>982 180</b>	<b>665 125</b>	<b>997 868</b>	<b>635 025</b>	<b>1 039 831</b>	<b>248 995</b>	<b>13 423 683</b>
% Change		Number of Driving Licences Issued per Province								
Category	GA	KZ	WC	EC	FS	MP	NW	LI	NC	RSA
<b>A1</b>	1,30	0,98	2,50	1,39	0,48	0,76	0,38	1,60	0,89	1,45
<b>A</b>	-0,29	-0,05	0,98	0,23	-0,73	-0,50	-1,25	-0,03	-1,44	-0,03
<b>B</b>	4,54	2,87	4,29	3,98	3,70	2,35	2,55	2,30	3,30	3,87
<b>EB</b>	2,32	0,37	5,76	3,23	1,50	5,33	0,82	0,60	5,96	2,88
<b>C1</b>	8,64	8,18	7,60	9,17	6,67	8,29	7,10	6,29	7,73	7,95
<b>EC1</b>	-0,03	-0,03	0,70	0,27	-0,19	-0,40	-0,47	-0,03	-0,21	0,11
<b>C</b>	4,11	4,46	2,94	3,02	2,59	5,36	2,29	4,20	1,89	3,83
<b>EC</b>	-0,32	-0,13	-0,16	0,15	-0,49	-0,15	-1,07	0,17	-0,04	-0,23
<b>Total</b>	<b>4,04</b>	<b>3,80</b>	<b>2,84</b>	<b>3,61</b>	<b>2,86</b>	<b>4,99</b>	<b>3,24</b>	<b>4,56</b>	<b>3,25</b>	<b>3,79</b>

### Driving Licences:

<b>A</b>	Motorcycle > 125 cub.cm	<b>A1</b>	Motorcycle < 125 cub.cm	<b>B</b>	Motor vehicle < 3,5000 kg
<b>C</b>	Motorvehicle > 16,000 kg	<b>C1</b>	Motor vehicle 3,500 – 16,000 kg	<b>EB</b>	Articulated motor vehicle <16,000 kg
		<b>EC</b>	Articulated vehicle > 16,000 kg	<b>EC1</b>	Articulated vehicle 3,500 – 16,000 kg

## APPENDIX C-3

Sept 2018										
Number of Professional Driving Permits (PrDP's) Issued per Province										
Category	GA	KZ	WC	EC	FS	MP	NW	LI	NC	RSA
<b>G</b>	1 566	1 728	1 499	703	798	921	386	759	327	<b>8 687</b>
<b>P G</b>	274 907	180 164	149 004	86 405	62 651	100 534	52 014	105 672	24 144	<b>1 035 495</b>
<b>D G</b>	39	10	17	17	19	10	13	41	2	<b>168</b>
<b>D P G</b>	13 846	10 831	4 372	2 399	3 100	3 546	1 288	1 998	746	<b>42 126</b>
<b>Total</b>	<b>290 358</b>	<b>192 733</b>	<b>154 892</b>	<b>89 524</b>	<b>66 568</b>	<b>105 011</b>	<b>53 701</b>	<b>108 470</b>	<b>25 219</b>	<b>1 086 476</b>
Sept 2019										
Number of Professional Driving Permits (PrDP's) Issued per Province										
Category	GA	KZ	WC	EC	FS	MP	NW	LI	NC	RSA
<b>G</b>	1 472	1 530	1 418	672	805	784	364	681	347	<b>8 073</b>
<b>P G</b>	282 200	184 264	153 636	88 115	63 393	103 326	52 456	106 201	24 705	<b>1 058 296</b>
<b>D G</b>	22	9	19	16	17	5	14	37	3	<b>142</b>
<b>D P G</b>	14 679	11 300	4 494	2 473	3 172	3 665	1 296	2 031	768	<b>43 878</b>
<b>Total</b>	<b>298 373</b>	<b>197 103</b>	<b>159 567</b>	<b>91 276</b>	<b>67 387</b>	<b>107 780</b>	<b>54 130</b>	<b>108 950</b>	<b>25 823</b>	<b>1 110 389</b>
% Change										
Category	GA	KZ	WC	EC	FS	MP	NW	LI	NC	RSA
<b>G</b>	-6,00	-11,46	-5,40	-4,41	0,88	-14,88	-5,70	-10,28	6,12	-7,07
<b>P G</b>	2,65	2,28	3,11	1,98	1,18	2,78	0,85	0,50	2,32	2,20
<b>D G</b>	-43,59	-10,00	11,76	-5,88	-10,53	-50,00	7,69	-9,76	50,00	-15,48
<b>D P G</b>	6,02	4,33	2,79	3,08	2,32	3,36	0,62	1,65	2,95	4,16
<b>Total</b>	<b>2,76</b>	<b>2,27</b>	<b>3,02</b>	<b>1,96</b>	<b>1,23</b>	<b>2,64</b>	<b>0,80</b>	<b>0,44</b>	<b>2,40</b>	<b>2,20</b>

### Professional Driving Permits (PrDPs)

G : Goods

P : Passengers

D : Dangerous goods





**Road Traffic**  
Management Corporation

Road Traffic Management Corporation  
Eco Origin Office Park, Block F  
349 Witch-Hazel Street  
Highveld Ext 79  
Tell: 012 999 5200

.....  
Want to know more about the RTMC - visit [www.rtmc.co.za](http://www.rtmc.co.za)

