



Road Traffic
Management Corporation

State of Road Safety Report

Quarterly Report: October - December 2019



transport

Department:
Transport
REPUBLIC OF SOUTH AFRICA

Table of contents

Table of contents	ii
List of Figures	5
List of acronyms and abbreviations	7
1. OBJECTIVE OF THE REPORT	8
2. EXECUTIVE SUMMARY	9
SECTION A	10
1. INTRODUCTION	10
2. ROAD FATAL CRASHES	12
3. ROAD FATALITIES	21
4. MAJOR CRASHES INVESTIGATED	28
1. INTRODUCTION	32
3. DRIVER POPULATION	53

List of Tables

Table 1: Number of fatal crashes per Province	12
Table 2: Comparison of fatalities per province for the two quarters of 2018.....	21
Table 3: Number of registered vehicles per type	32
Table 4: Number of registered vehicles per province	34
Table 5: Estimated mid-month human population per province - million	37
Table 6: Average number of persons per vehicle (excluding trucks, other, unknown and towed vehicles)	37
Table 7: Percentage improvement in mobility per province.....	38
Table 8: Average number of persons per "heavy" passenger transport vehicle (buses and minibuses)	40
Table 9: Percentage improvement on average number of persons per "heavy" passenger transport vehicles (buses and minibuses)	41
Table 10: Average number of public transport vehicles (buses and minibuses) per 10,000 human population	42
Table 11: Number of un-roadworthy, un-licenced vehicles or both	44
Table 12: Number of vehicles that are un-roadworthy or un-licenced or both	45
Table 13: Number of un-roadworthy vehicles	46
Table 14: Number of un-roadworthy vehicles	47
Table 15: Number of un-licenced vehicles	49
Table 16: Number of un-licenced vehicles	50
Table 17: Number of learner licences issued.....	53
Table 18: Number of learners licences issued per province.....	54
Table 19: Number of driving licences issued	55
Table 20: Number and percentage of driving licences issued per category.....	57
Table 21: Number of driving licences issued per province.....	57

Table 22: Number of driving licences cards issued and expired per province 2018..	58
Table 23: Number of PrDP's issued.....	59
Table 24: Number of professional driving permits (PrDP's) issued per province.....	60
Table 25: Number of professional driving permits (PrDP's) issued and expired per province 2018	61

List of Figures

Figure 1: Percentage distribution of fatal crashes per province	13
Figure 2: Percentage distribution of fatal crashes per day of week	14
Figure 3: Percentage distribution of fatal crashes per time of day for 2018 and 2019	14
Figure 4: Percentage distribution of crash types.....	15
Figure 5: Percentage distribution of fatal crashes per vehicle type.....	16
Figure 6: Comparison of contributory factors for 2018 and 2019.....	17
Figure 7: Percentage distribution of human factors.....	18
Figure 8: Percentage distribution of road and environmental factors.....	19
Figure 9: Percentage distribution for vehicle factor.....	19
Figure 10: Percentage distribution of fatalities per road user	22
Figure 11: Percentage distribution of fatalities per gender	23
Figure 12: Percentage distribution of fatalities per race.....	23
Figure 13: Percentage distribution of fatalities per age for drivers	24
Figure 14: Percentage distribution of fatalities per age for passengers.....	25
Figure 15: Percentage distribution of fatalities per age for pedestrians	26
Figure 16: Percentage distribution of fatalities per age for cyclists.....	26
Figure 17: Major crash casualties during 3rd quarter of 2018 and 2019	28
Figure 18: Vehicle types involved in major crashes investigated	29
Figure 19: Crash types that occurred for major crashes investigated	30
Figure 20: Contributing factors to major crashes investigated.....	31
Figure 21: Percentage Annual Growth in Vehicles.....	33
Figure 22: Percentage Annual Growth in Vehicle Population.....	35
Figure 23: Percentage Annual Growth in Vehicle Population.....	35

Figure 24: Percentage Vehicles Registered per Province.....	36
Figure 25: Average number of persons per vehicle (excluding trucks,	38
Figure 26: Percentage improvement in mobility of persons.....	39
Figure 27: Average number of persons per " heavy vehicles".....	40
Figure 28: Average number of persons per " heavy vehicles".....	41
Figure 29: Number of buses and minibuses / 10,000 human population.....	43
Figure 30: Percentage change in number of vehicles un-roadworthy or un-licensed or both	45
Figure 31: Percentage of un-roadworthy vehicles.....	46
Figure 32: Percentage change in number of vehicles that are un-roadworthy per province	47
Figure 33: Percentage of un-roadworthy vehicles.....	48
Figure 34: Percentage of un-licenced vehicles.....	50
Figure 35: Percentage change in number of vehicle that are un-licensed per province	51
Figure 36: Percentage of un-licensed vehicles.....	51
Figure 37: Number of learner licenses issues.....	53
Figure 38: Percentage change in learner licenses issued per province.....	54
Figure 39: Number of driving licenses issued.....	56
Figure 40: Percentage change in driving licenses issued.....	57
Figure 41: Percentage expired driving license cards	58
Figure 42: Number of PrDP's issued	59
Figure 43: Percentage in PrDP's issued	60
Figure 44: Percentage expired professional driving permits	61

List of acronyms and abbreviations

CHOCOR	:	CULPABLE HOMICIDE CRIME: OBSERVATION REPORT
EC	:	EASTERN CAPE
GA	:	GAUTENG
FS	:	FREE STATE
LI	:	LIMPOPO
MP	:	MPUMALANGA
NC	:	NORTHERN CAPE
NW	:	NORTH WEST
WC	:	WESTERN CAPE
KZN	:	KWAZULU NATAL
SAPS	:	SOUTH AFRICAN POLICE SERVICE
NATIS	:	ELECTRONIC NATIONAL TRAFFIC INFORMATION SYSTEM
NREP	:	NATIONAL ROLLOUT ENFORCEMENT PLAN

1. OBJECTIVE OF THE REPORT

This report is aimed at achieving the following objectives:

- To provide road traffic fatal crashes and fatalities statistics based on the Culpable Homicide Crash: Observation Report (CHoCOR) Forms; and
- To present statistics on registered vehicles, un-roadworthy vehicles, un-licenced vehicles, driving licence and professional driving permits issued.

2. EXECUTIVE SUMMARY

The report seeks to provide the road crash statistics. The performance is for the period between October to December 2019. The performance per each focus areas have been provided below.

Road Crashes Data

A total number of 3 416 fatalities were recorded for the period between October to December 2019 from 2 861 fatal crashes. That resulted in an increase of 6% fatalities from 2018. The most affected road users were pedestrians and passengers.

A total number of thirty-four (34) major crashes were reported and investigated during this period. One-hundred and ninety-five (195) persons were killed and two-hundred and twenty-seven (227) persons sustained injuries in the major crashes.

Vehicle and driver population

The number of registered vehicles increased by 238 650 (1.91%) from 12 462 979 on 31 December 2018 to 12 701 629 vehicles on 31 December 2019.

The number of learner driving licences issued decreased by 1 759 (0.15%) from 1 171 788 on 31 December 2018 to 1 170 029 on 31 December 2019. The number of driving licences issued increased by 491 744 (3.77%) from 13 055 317 on 31 December 2018 to 13 547 061 as of 31 December 2019.

SECTION A

1. INTRODUCTION

This report is based on information about fatal crashes that were reported to police stations between October and December 2019 using the CHoCOR Forms. In addition, the report includes information about registered vehicles, driving licences and professional driving permits issued from the National Traffic Information System (NaTIS).

1.1 Road crash data collection methodology

The Culpable Homicide Crash Observation Report (CHoCOR) form is used to collect fatal crashes data on daily basis. South African Police Service (SAPS) is the primary source of the fatal crashes data. SAPS provide the Corporation with a list of all recorded fatal crashes (CAS list) and furthermore, the Corporation receives the CHoCOR forms from various police stations. Road Traffic Management Corporation captures, processes and verifies the data to compile a report.

1.2 Crash Data Flow

Data is collected through the CHoCOR forms. The forms are then submitted to the Corporation either by fax, email or through the phone.

1.3 Data processing

The data is captured, processed and verified for the compilation of the consolidated statistical report. There is a continuous engagement with provinces for validation purpose.

1.4 Limitations

The road traffic information contained in the report is mainly based on the fatal crashes only. There is still a need for in-depth research to be conducted to collect scientific base facts to complement the administrative data.

1.5 Instruments

The Culpable Homicide Crash Observation Report (CHoCOR) forms are being used by Road Traffic Information unit to record fatality data on daily basis.

2. ROAD FATAL CRASHES

The section covers the data in relation to fatal road crashes. The section will encompass the number of fatal crashes and fatalities, contributory factors, fatality data per road user group and major crashes.

2.1 Number of fatal crashes

The table below provides a comparison during the 3rd quarters in 2018 and 2019. There was an increase of 286 (11%) in comparison to the two quarters of 2018 and 2019 nationally. On a provincial level, only two (2) provinces recorded a decrease while the other seven (7) provinces recorded an increase in the number of fatal crashes. The highest increase was recorded for Northern Cape with 48% followed by Western Cape and KwaZulu Natal with 33% and 25% respectively.

Number of Fatal Crashes per Province										
Quarter 3	EC	FS	GP	KZN	LI	MP	NC	NW	WC	RSA
Oct - Dec 2018	363	201	502	462	307	265	64	188	223	2 575
Oct - Dec 2019	358	180	566	577	317	282	95	189	297	2 861
Change	-5	-21	64	115	10	17	31	1	74	286
% Change	-1	-10	13	25	3	6	48	1	33	11

Table 1: Number of fatal crashes per Province

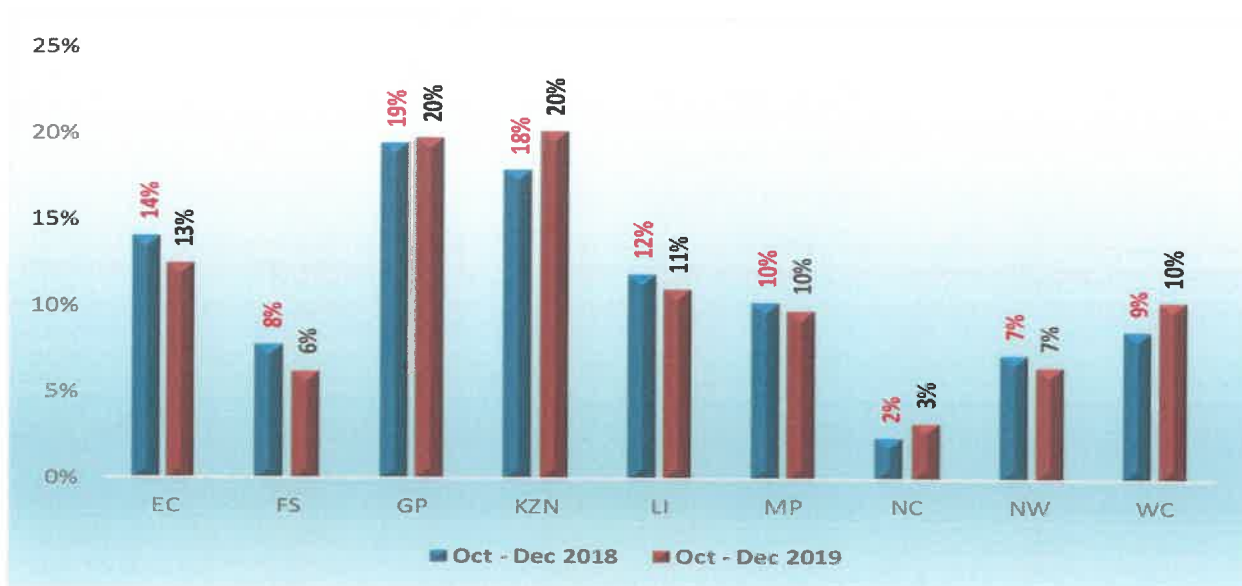


Figure 1: Percentage distribution of fatal crashes per province

The figure above provides percentage distribution of fatal crashes per province. The provinces with the highest contribution of more than 15% were KwaZulu Natal and Gauteng with 20%, followed by Eastern Cape and Limpopo with 13% and 11%, respectively for 2019.

2.1.1 Fatal Crashes per Day of Week

The details of the crashes per day of the week is given in the figure below. Most crashes are still recorded as from Friday until Monday for both reporting periods. It's clear that the country do record less fatal crashes during the week.

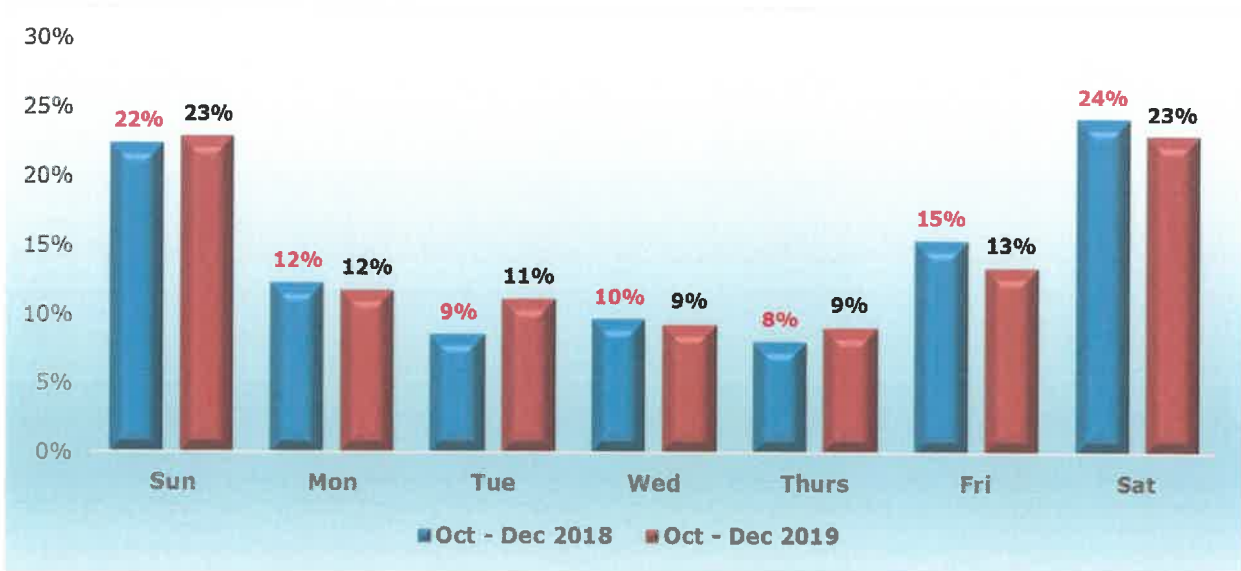


Figure 2: Percentage distribution of fatal crashes per day of week

2.1.2 Fatal Crashes per time of day

The percentage of fatal crashes per time of day for the period under review is reflected in the figure below.

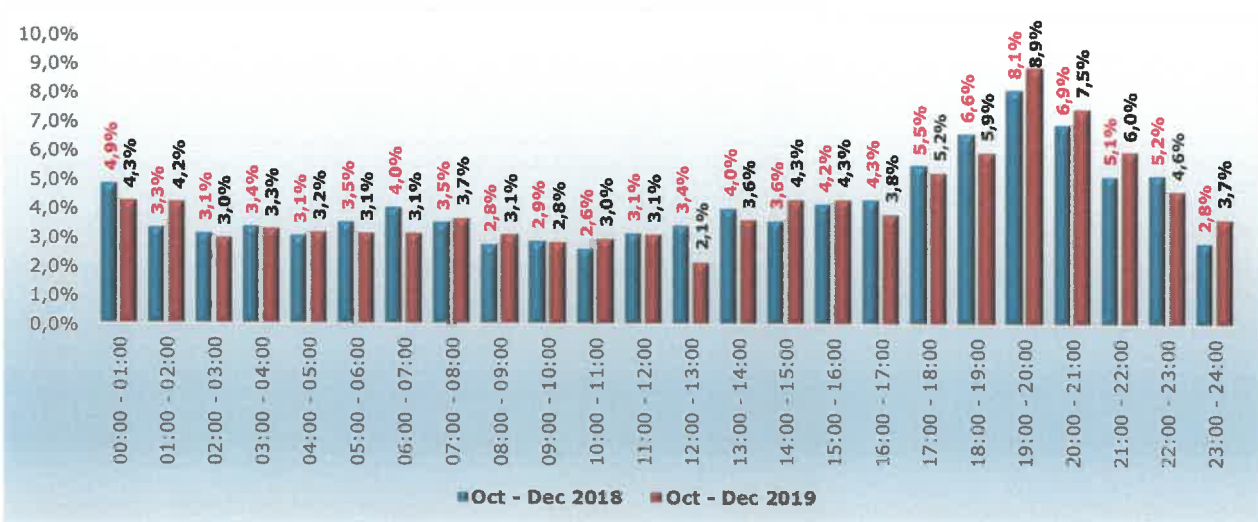


Figure 3: Percentage distribution of fatal crashes per time of day for 2018 and 2019

The figure above depicts a comparison between fatal crashes per time of day for the 2018 and 2019. Most fatal crashes were recorded between slot 19:00 to 20:00 with 9% during 2019. Followed by slot between 20:00 to 21:00 with 7% and slot 21:00 to 22:00 with 6% in 2019. However, the time slot between 18:00 to 19:00 has recorded a slight decrease of 1% compared to the previous year.

2.1.3 Fatal crashes per crash type

The percentage contribution of fatal crashes per crash type are reflected in the figure below.

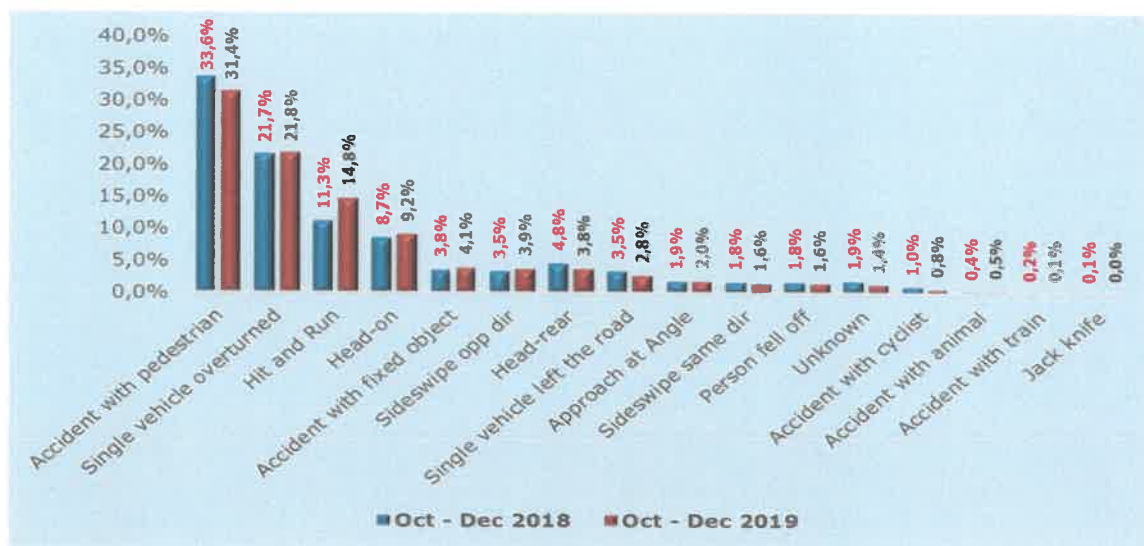


Figure 4: Percentage distribution of crash types

The figure above depicts that most crashes occurred due to crashes with pedestrians and single vehicle overturned. Contribution of 33% for 2018 and 31% for 2019 were recorded in this regard. Followed by single vehicle overturned with a contribution of 22% for both 2018 and 2019.

2.1.4 Fatal crashes per vehicle type

The percentage contribution of various vehicles involved in the fatal crashes are reflected in the figure below.

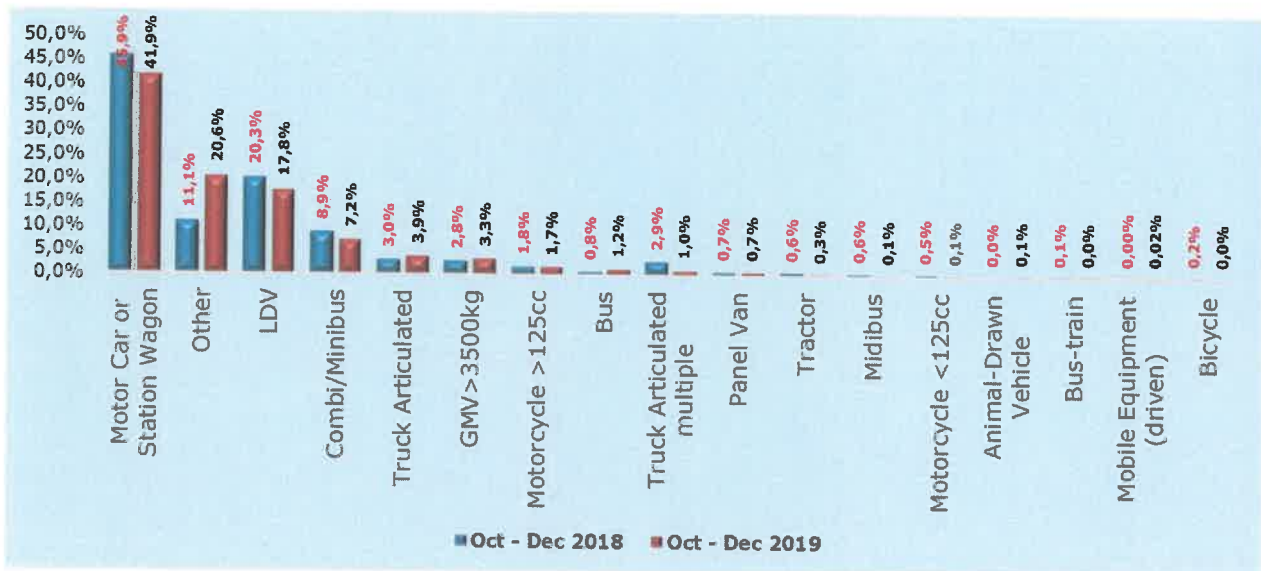


Figure 5: Percentage distribution of fatal crashes per vehicle type

The vehicle types that contributed the highest to fatal crashes were motorcars and LDV's with contributions of 42% and 18%, respectively for 2019. However, motor cars recorded a decrease of 4% while LDV's recorded a decrease of 2,5% in comparison of the two periods. The two vehicle types may contribute to high number of fatalities for passengers.

2.2 Contributory factors

The contributory factors for fatal crashes are classified as follows: human factors (defined as a stable, general human abilities and limitations that are valid for all users regardless); vehicle factors (are more focussed on the vehicle itself and they cover issues around mechanical failures; and environment (include limited visibility, poorly marked roads, missing road signs, sudden changes in road infrastructure, gravel road, the state of the road and weather conditions).

The fatal crashes for October to December 2019 showed that human factors contributed 87% as compared to 90% recorded during October to December 2018. The roads and environmental factors recorded 6% in 2018 and 8% in 2019 which shows a significant increase of 2%, while vehicle factors increased with 1% from 4% in 2018 to 5% in 2019.

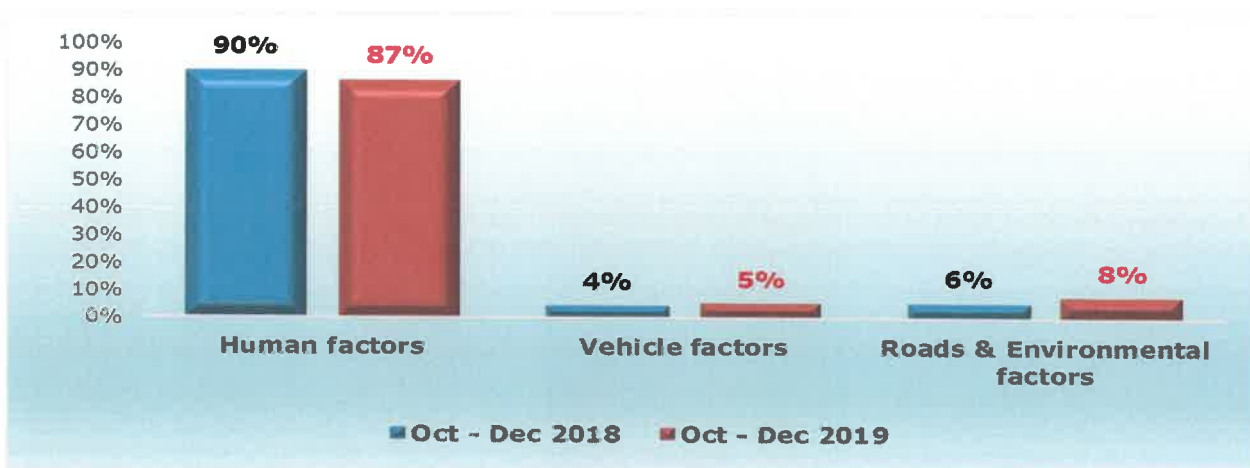


Figure 6: Comparison of contributory factors for 2018 and 2019

The human factors remained a challenge compared to other factors, however with a decrease of 3% in comparison of the two quarters in 2018 and 2019.

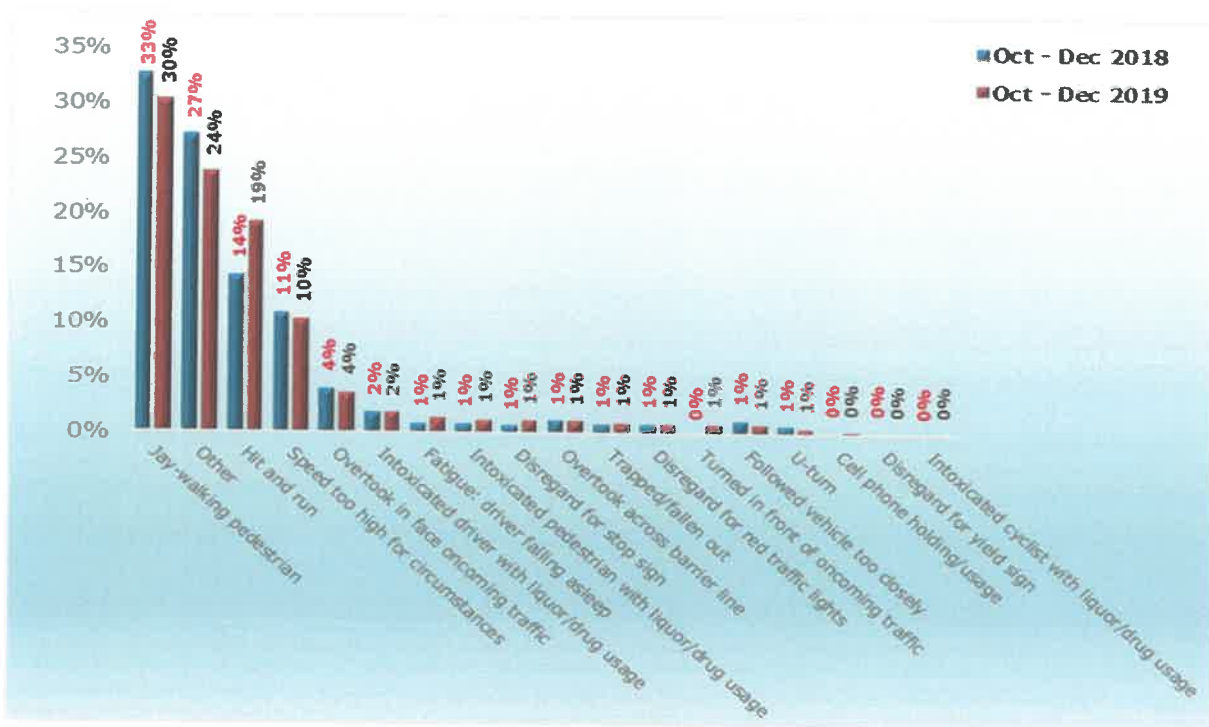


Figure 7: Percentage distribution of human factors

The figure above shows that jay-walking contribution to fatal crashes has remains to be the highest though a decrease of 3% was recorded from 33% in 2018 to 30% in 2019. However, hit and run increased with a contribution of 5% from 14% in 2018 to 19% in 2019. Speeding was still a challenge as it also contributed to fatal crashes. The jay-walking and hit and run as depicted above correlate to a high number of fatalities for pedestrians.

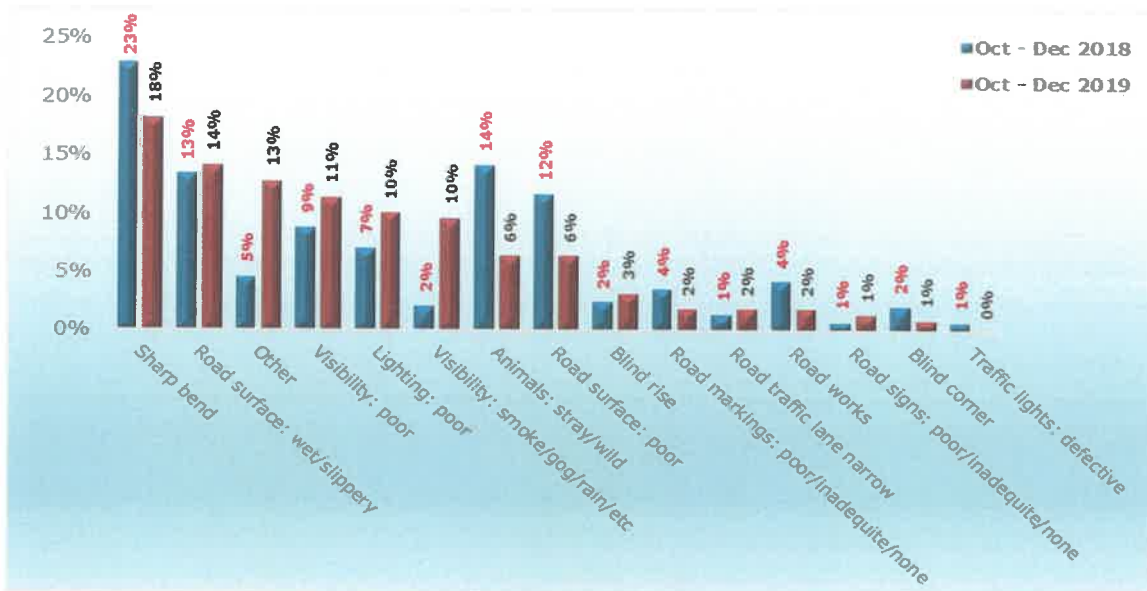


Figure 8: Percentage distribution of road and environmental factors

The figure above depicts that most fatal crashes occurred as a result of sharp bend which contributed 23% in 2018 and 18% in 2019 with a decrease of 5%; followed by road surface wet or slippery which contributed 13% in 2018 and 14% in 2019 with an increase of 1%.

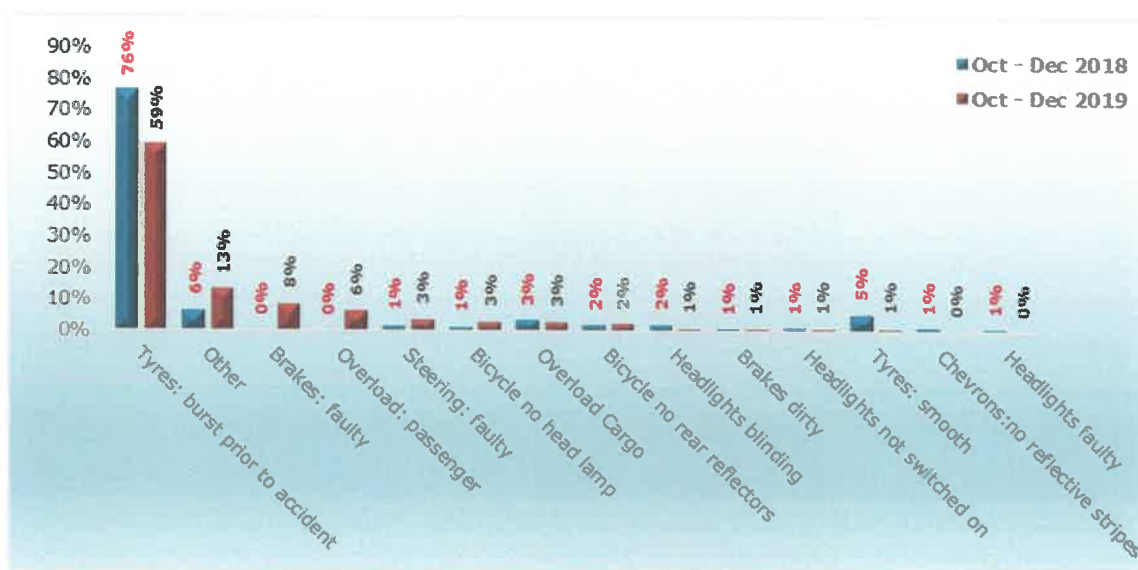


Figure 9: Percentage distribution for vehicle factor

The figure above shows that most crashes occurred as a result of a tyre burst prior to accident with a contribution of 59% in 2019 as compared to 76% in 2018 which shows decrease of 17%. Furthermore, the Brakes faulty and overload passengers contributed 8% and 6%, respectively in 2019, from 0% in 2018.

3. ROAD FATALITIES

The section covers the data in relation to road fatalities. Fatalities are defined as when a person or persons that are killed during or immediately after a crash, or death within 30 days after a crash happened as a direct result of such a crash. The section will encompass the number of fatalities and percentage distribution per road user, gender, race and per age.

3.1 Number of fatalities per province

Number of Fatalities per Province										
Quarter 3	EC	FS	GP	KZN	LI	MP	NC	NW	WC	RSA
Oct - Dec 2018	460	277	558	552	445	335	82	241	261	3 211
Oct - Dec 2019	447	232	623	675	406	349	109	233	342	3 416
Change	-13	-45	65	123	-39	14	27	-8	81	205
% Change	-3	-16	12	22	-9	4	33	-3	31	6

Table 2: Comparison of fatalities per province for the two quarters of 2018 and 2019

The table above shows a comparison of fatalities per province for the two quarters in 2018 and 2019. An increase in the number of fatalities is depicted from 3 211 in 2018 to 3 416 in 2019 which resulted to an increase of 6% nationally. Provincially, four (4) provinces recorded a decrease whilst five (5) of the provinces recorded increases in this regard. The provinces with the highest increases were Northern Cape with 33%, followed by Western Cape with 31% and KwaZulu Natal with 22% during 2019.

3.2 Number of Fatalities per Road User Group

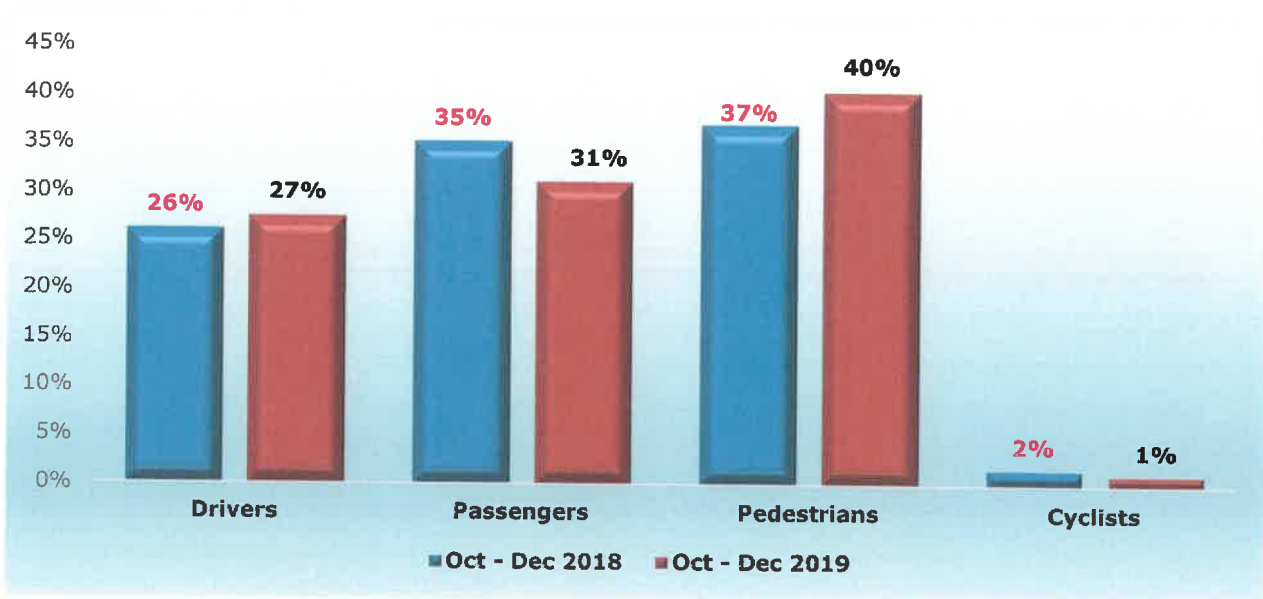


Figure 10: Percentage distribution of fatalities per road user

The percentage distribution of fatalities per road user groups are reflected in the figure above. The pedestrians contributed 37% in 2018 and 40% in 2019, giving an increase of 3% in comparison of the two periods. The passengers followed with a contribution of 35% in 2018 and 31% in 2019, which is a slight decrease of 4%. The drivers recorded an increase of 1% from 26% in 2018 to 27% in 2019.

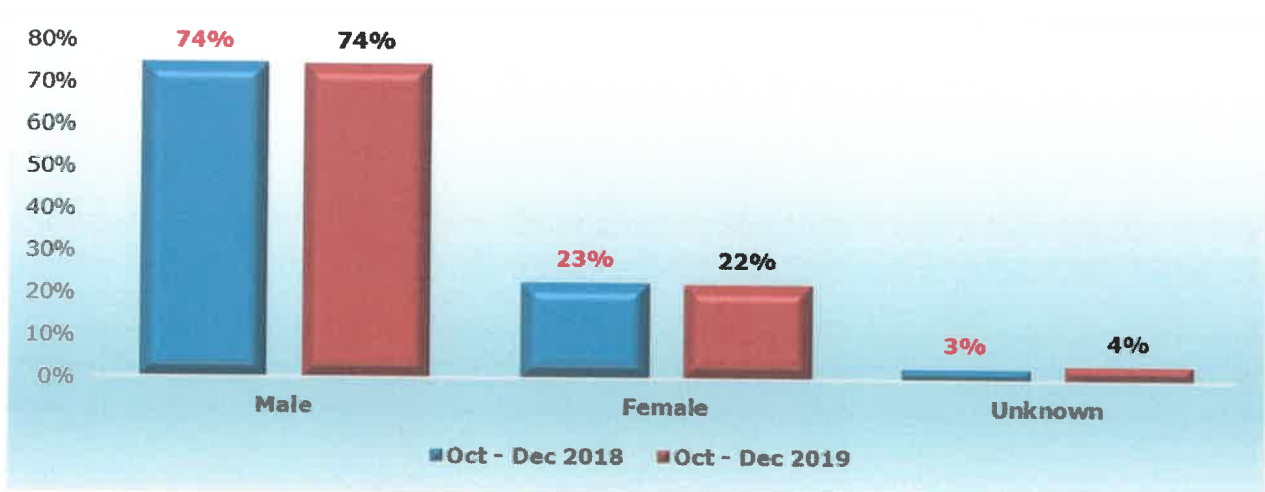


Figure 11: Percentage distribution of fatalities per gender

The figure above depicts trends for fatalities per gender for the two quarters in 2018 and 2019. The trend shows that the contribution by both gender groups remained the same for males at 74% whilst the figure for females shows a decrease of 1%.

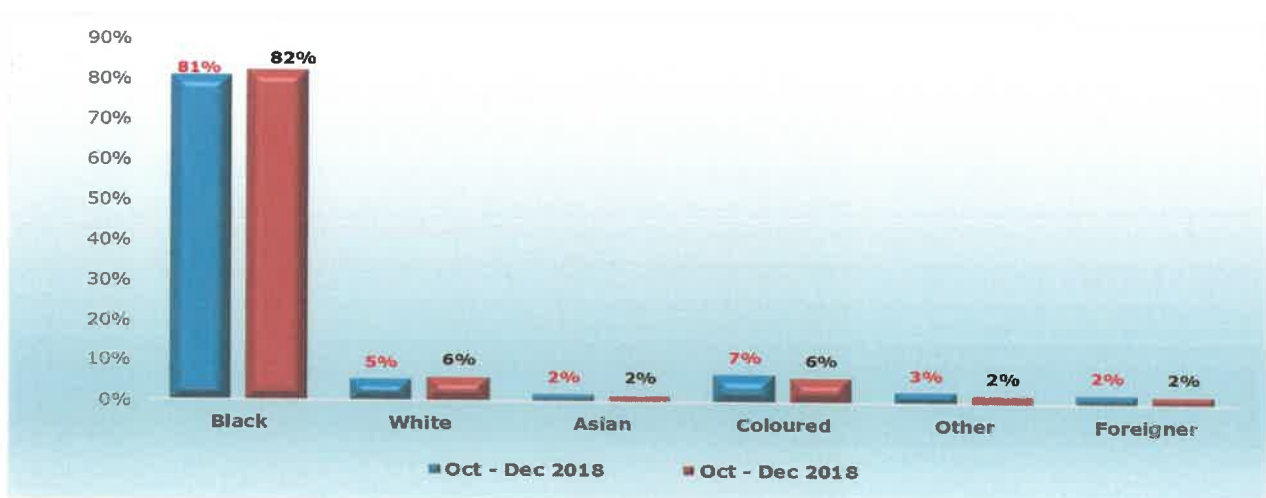


Figure 12: Percentage distribution of fatalities per race

The figure above shows that fatalities relating to blacks are very high in comparison to the other races. Blacks contributed 81% to the total fatalities in 2018 and 82% in 2019 that showed a slight increase of 1%. The whites also recorded a slight increase of 1% from 5% in 2018 to 6% in 2019, while the coloured race group showed a slight decrease of 1% with a contribution of 7% in 2018 and 6% in 2019 in comparison of the two periods.

3.3 Fatalities per Road user group and age group

The figures below provide information with regard to the fatalities per age and per road user type for the period October to December 2019. The information is categorised per road user group (Driver, Passenger, Pedestrian and Cyclists).

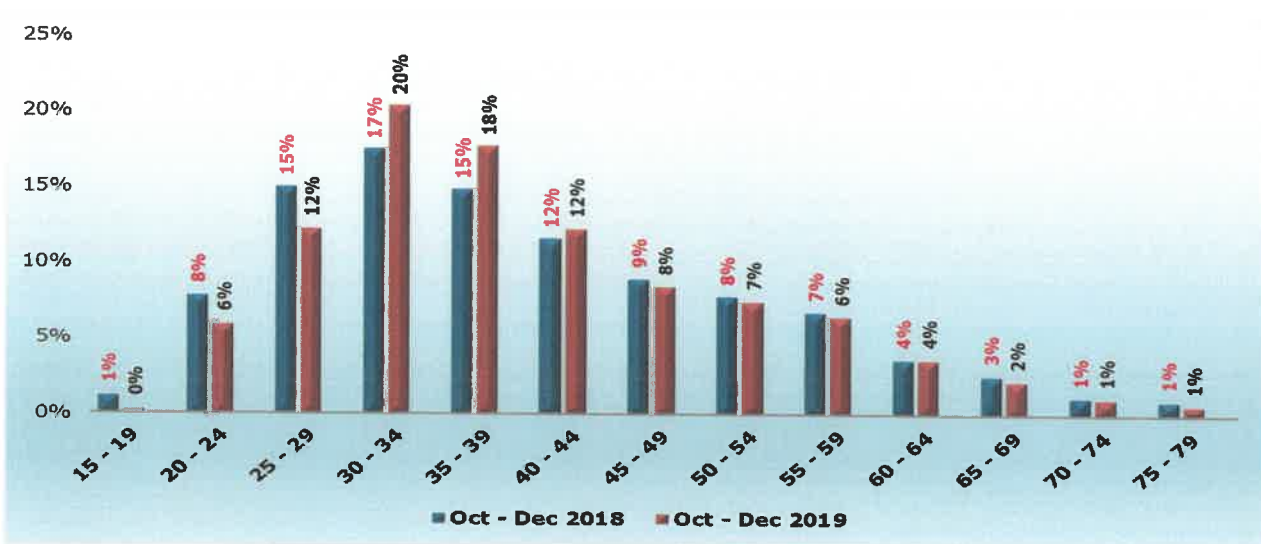


Figure 13: Percentage distribution of fatalities per age for drivers

The figure above shows that the highest fatalities for drivers were recorded from age group 30 to 34 and 35 to 39 years during 2019.

The two age categories recorded 20% and 18% respectively in 2019 as compared to 17% and 15% contributions. Respectively in 2018; recording an increase of 3% of fatalities for per age group in 2019.

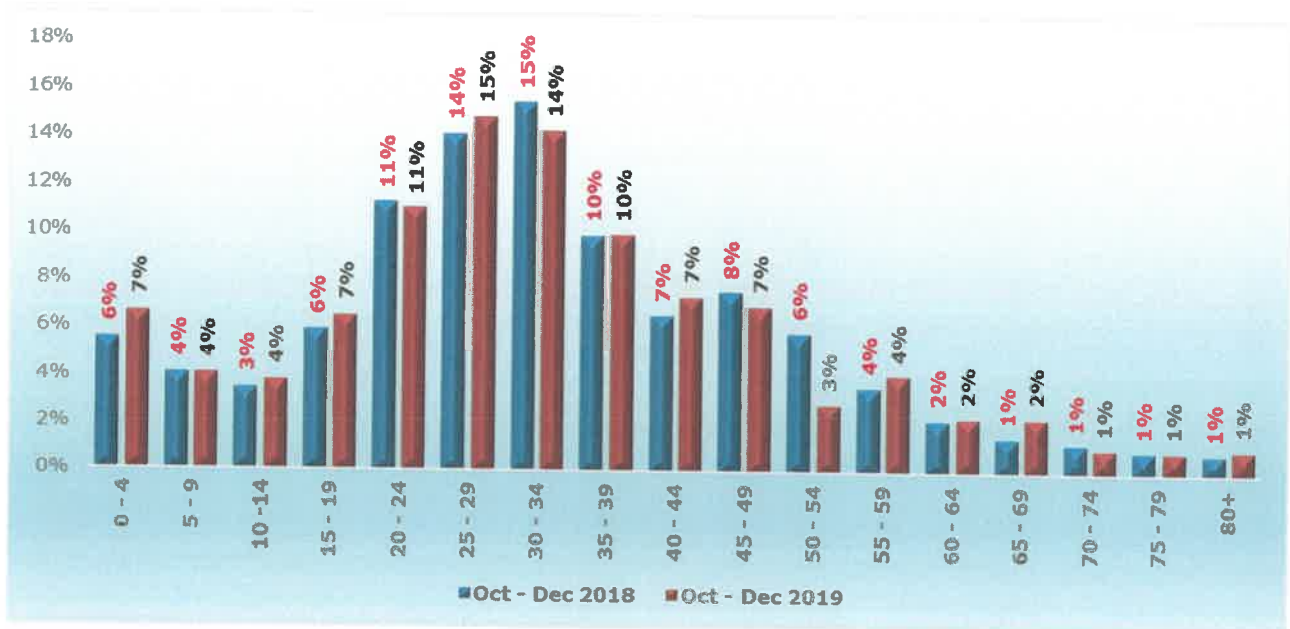


Figure 14: Percentage distribution of fatalities per age for passengers

The figure above indicates that most fatalities for passengers were recorded between age group 25 to 29 years. There was a slight increase from 14% in 2018 to 15% in 2019. Furthermore, a slight decrease has been recorded between age group 30 to 34 years.

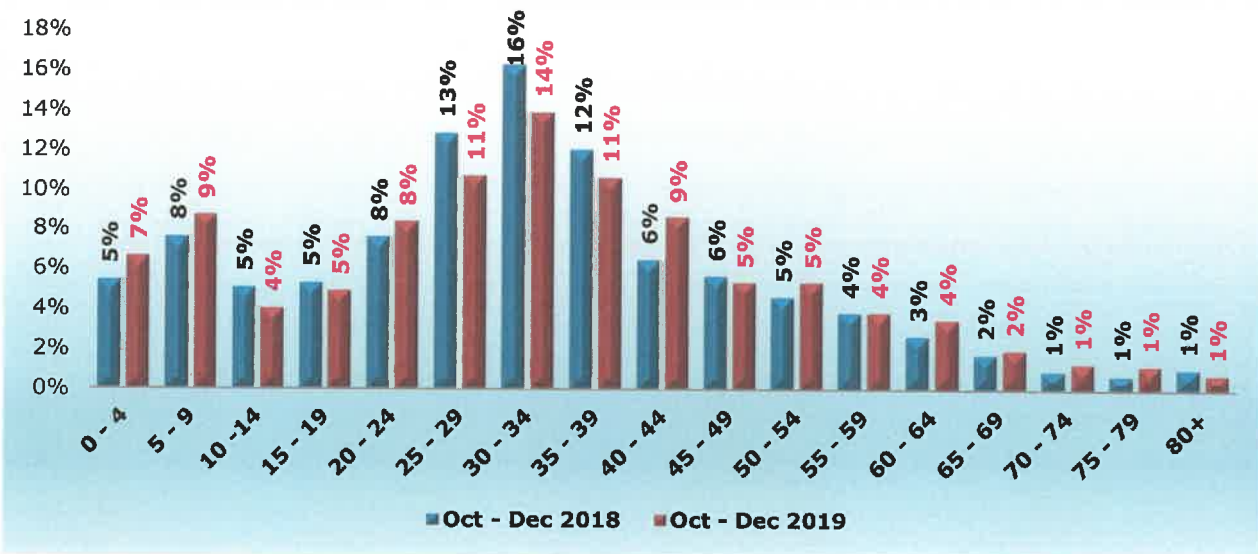


Figure 15: Percentage distribution of fatalities per age for pedestrians

The figure above indicates that most fatalities for pedestrians were recorded between the ages 30 to 34 years with 16% in 2018 and 14% in 2019. The age groups 25 to 29 and 35 to 39 years recorded decreases of 2% in 2019 respectively.

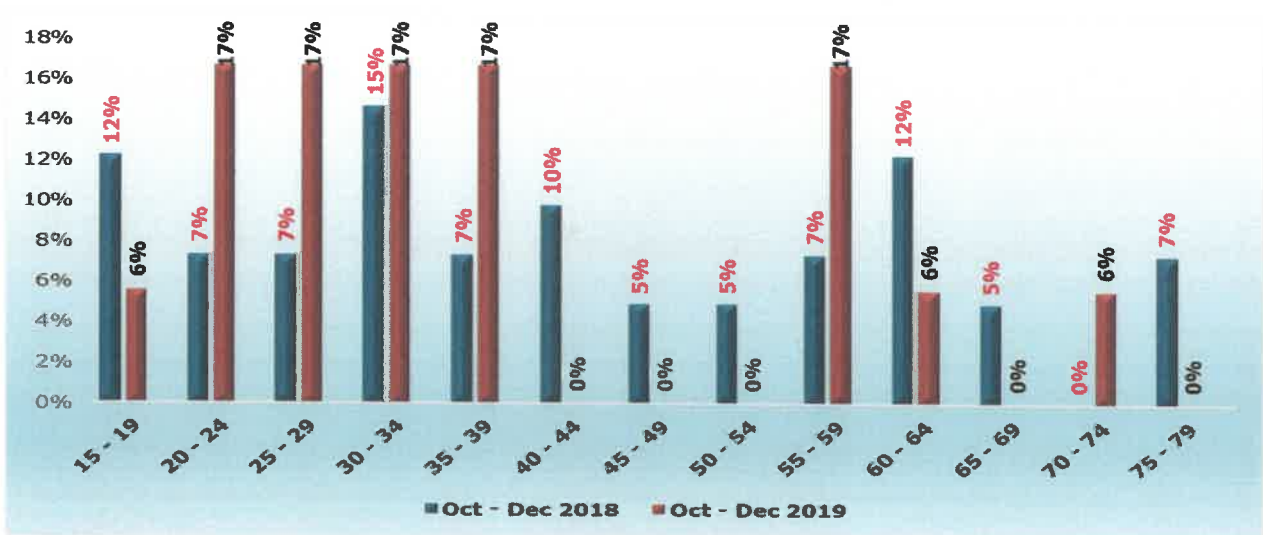


Figure 16: Percentage distribution of fatalities per age for cyclists

The figure above indicates that most fatalities for cyclists were recorded between age groups 20 to 29, 35 to 39 and 55 to 59 years with a contribution of 7% in 2018 and 17% in 2019 resulting with an increase of 10%. The age group 30 to 34 years followed with a contribution of 15% in 2018 and 17% in 2019 which increased by 2% in comparison of the two periods.

4. MAJOR CRASHES INVESTIGATED

This section provides for all the major crashes for the period under review. Major crashes are defined as Crashes where five (5) or more people died, Crashes involving vehicles carrying dangerous goods/ hazardous chemicals where there is a fatality and a spillage of the dangerous goods/ hazardous chemicals and any crash that the Corporation deems necessary to investigate.

A total number of thirty-four (34) major crashes were reported and investigated during this period. One-hundred and ninety-five (195) persons were killed and two-hundred and twenty-seven (227) persons sustained injuries in the major crashes.

The figure below provides comparison of the number of major crashes reported and investigated and casualties during the third quarters in 2018 and 2019.

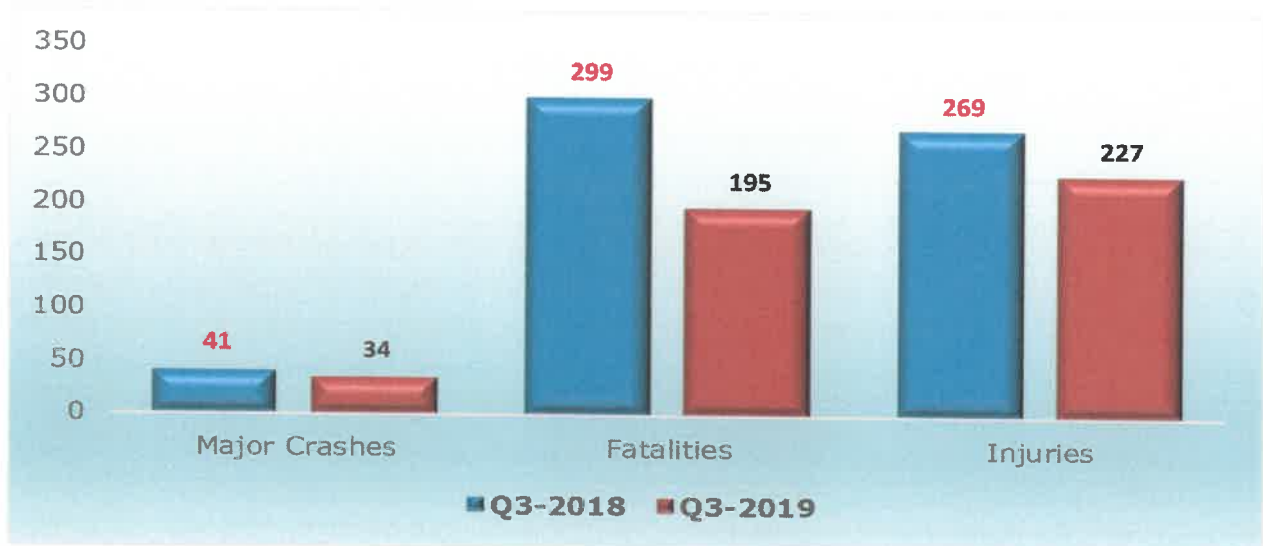


Figure 17: Major crash casualties during 3rd quarter of 2018 and 2019

A decrease has been recorded for the number of crashes from forty-one (41) in 2018 to thirty-four (34) in 2019. A downward trend has been observed for the number of fatalities from two-hundred and ninety-nine (299) in 2018 to one-hundred and ninety-five (195) in 2019.

4.1 Vehicle types comparison on major crashes

The figure below depicts the vehicle types involved in the major crashes reported and investigated during the third quarter of 2018 and 2019. The vehicle type mostly involved in major crashes were 21 light motor vehicles followed by 14 light delivery vehicles during 2019.

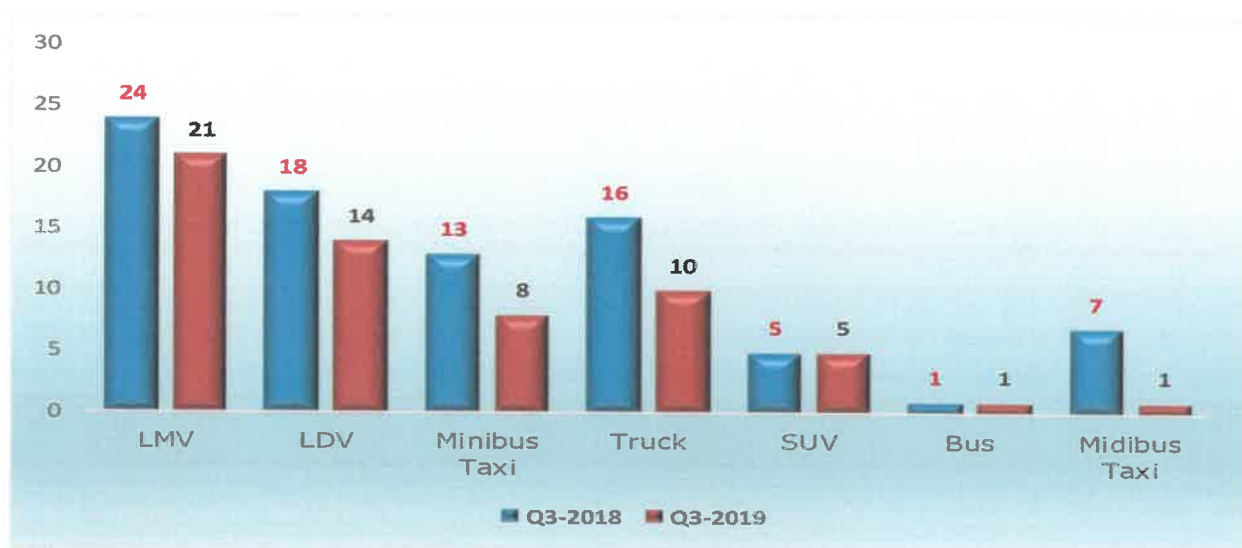


Figure 18: Vehicle types involved in major crashes investigated

4.2 Major crash type comparison on major crashes

The figure below depicts the major crash type comparison on crashes that occurred during the third quarter of 2018 and 2019. The majority of the major crashes that occurred during the third quarter in 2019 were as a result of head on with a contribution of 26%, followed by Single Vehicle Overturned and T-bone crash with a contribution of 21% respectively.

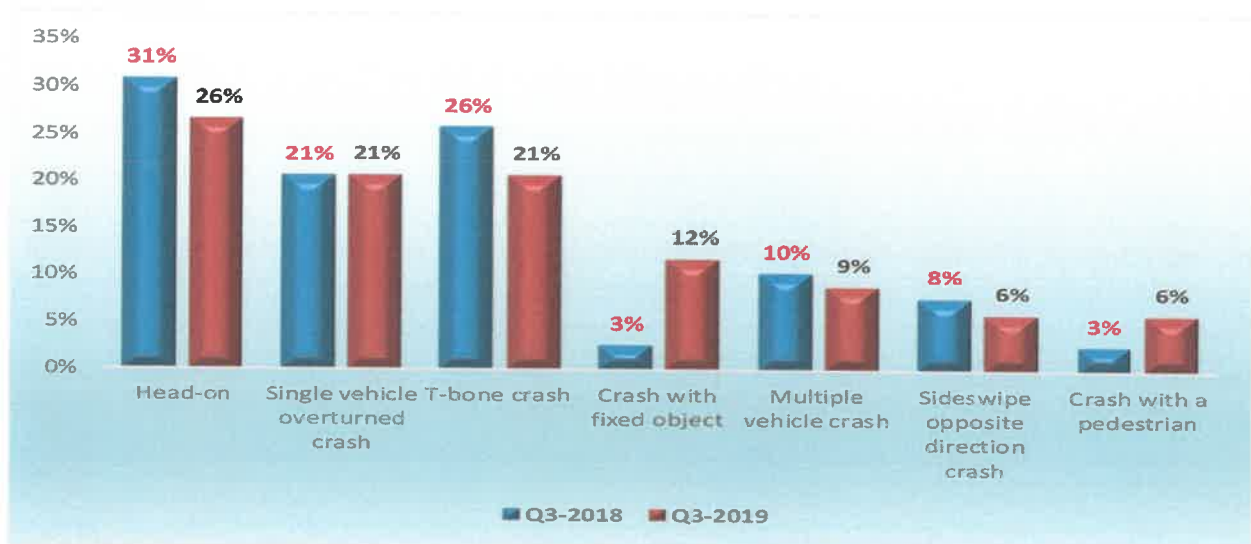


Figure 19: Crash types that occurred for major crashes investigated

4.3 Contributing factors to the major crashes

Human factor contributed 88% to the major crashes, followed by vehicle factors with 12%.

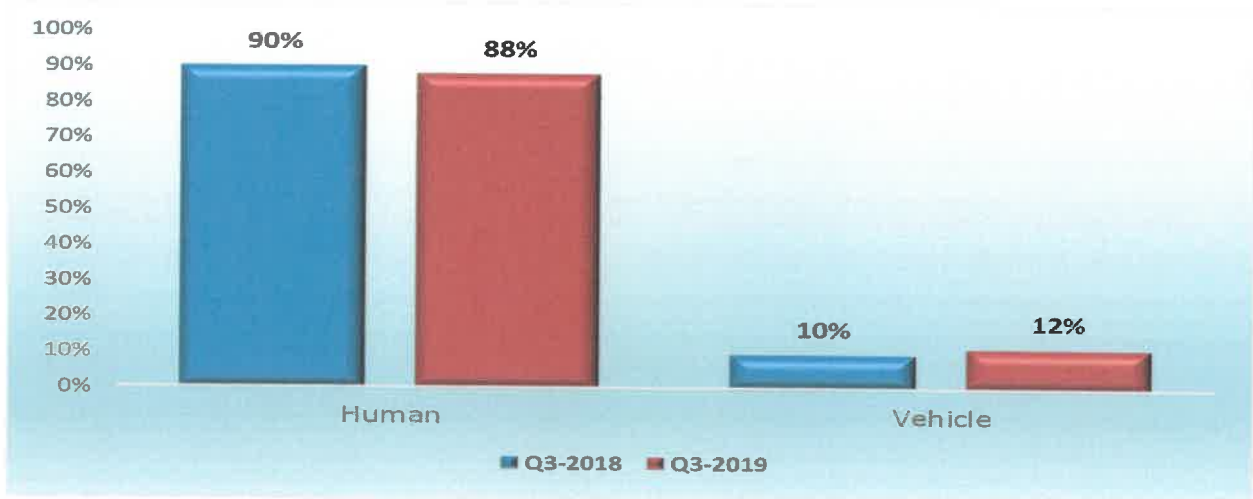


Figure 20: Contributing factors to major crashes investigated

SECTION B

1. INTRODUCTION

The section covers the vehicle population and human mobility data, as well as driver population. The vehicle population data will encompass the number of registered vehicles inclusive of the status of their roadworthiness and licencing, as well as human mobility in terms of the number of persons per vehicle. The driver population data covers the number of registered drivers including the status and categories of licences

2. VEHICLE POPULATION

2.1 Number of Registered Vehicles

The number of registered vehicles increased by 238 650 (1.91%) from 12 462 979 on 31 December 2018 to 12 701 629 vehicles on 31 December 2019. Detail per type of vehicle is given in table below.

Number of Registered Vehicles	Number registered Dec 2018	Number registered Dec 2019	Change	% Change	% of Group Dec 2019	% of Total Dec 2019
Motorised Vehicles						
Motorcars	7 340 740	7 498 948	158 208	2,16	65,26	59,04
Minibuses	330 023	342 735	12 712	3,85	2,98	2,70
Buses	64 652	65 229	577	0,89	0,57	0,51
Motorcycles	346 617	343 391	-3 226	-0,93	2,99	2,70
LDV's - Bakkies	2 557 847	2 609 745	51 898	2,03	22,71	20,55
Trucks	377 090	380 710	3 620	0,96	3,31	3,00
Other & Unknown	250 843	250 069	-774	-0,31	2,18	1,97
Total Motorised	11 267 812	11 490 827	223 016	1,98	100,00	90,47
Towed Vehicles						
Caravans	100 906	99 590	-1 316	-1,30	8,23	0,78
Heavy Trailers	199 410	206 917	7 507	3,76	17,09	1,63
Light Trailers	879 337	889 185	9 848	1,12	73,44	7,00
Other & Unknown	15 515	15 110	-405	-2,61	1,25	0,12
Total Towed	1 195 168	1 210 802	15 635	1,31	100,00	9,53
All Vehicles	12 462 979	12 701 629	238 650	1,91		100,00

Table 3: Number of registered vehicles per type

The table above shows that on a percentage basis the biggest change was for minibuses and heavy trailers with an increase of 3.85% and 3.76% respectively. The number of registered minibuses increased from 330 023 to 342 735 and followed by heavy trailers which increased from 199 410 to 206 917, respectively.

The monthly percentage change over the past year for motorised vehicles are shown in the figure below.

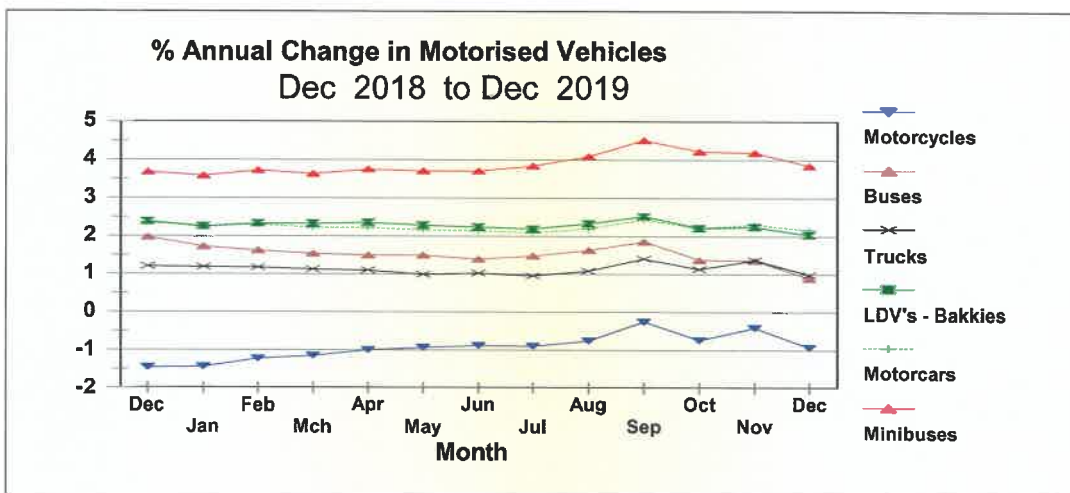


Figure 21: Percentage Annual Growth in Vehicles

The total motor vehicle population per Province for December 2018 and December 2019 respectively, is given in table and reflected in the figure below.

Number of Registered Vehicles per Province	Number registered Dec 2018	Number registered Dec 2019	Change	% Change	% of Total Dec 2019
Gauteng	4 795 503	4 885 748	90 245	1,88	38,47
KwaZulu-Natal	1 660 652	1 695 075	34 423	2,07	13,35
Western Cape	2 022 790	2 063 299	40 509	2,00	16,24
Eastern Cape	828 069	845 614	17 545	2,12	6,66
Free State	632 208	638 550	6 342	1,00	5,03
Mpumalanga	900 217	916 351	16 134	1,79	7,21
North West	627 847	636 321	8 474	1,35	5,01
Limpopo	713 993	735 448	21 455	3,00	5,79
Northern Cape	281 700	285 223	3 523	1,25	2,25
RSA	12 462 979	12 701 629	238 650	1,91	100

Table 4: Number of registered vehicles per province

The number of registered vehicles per province show the highest increase recorded for Limpopo with an increase of 3% from 713 993 in 2018 to 735 448 in 2019 followed by Eastern Cape, with an increase of 2.12% from 828 069 to 845 614.

% Annual Growth in Vehicle Population
Dec 2018 to Dec 2019

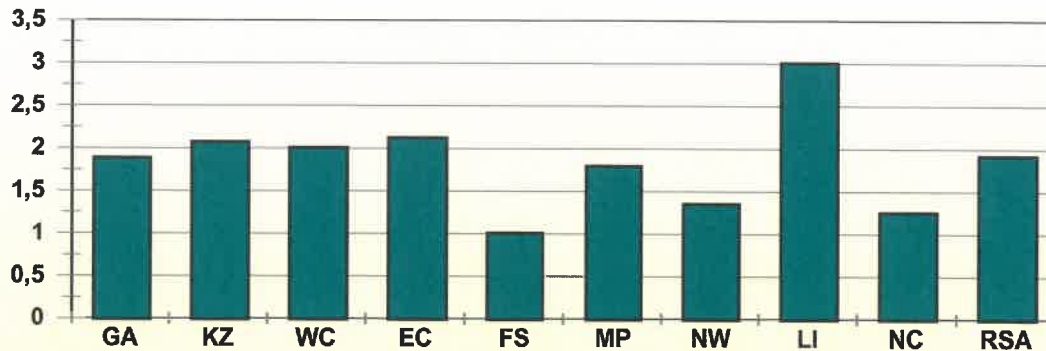


Figure 22: Percentage Annual Growth in Vehicle Population

% Annual Growth in Vehicle Population

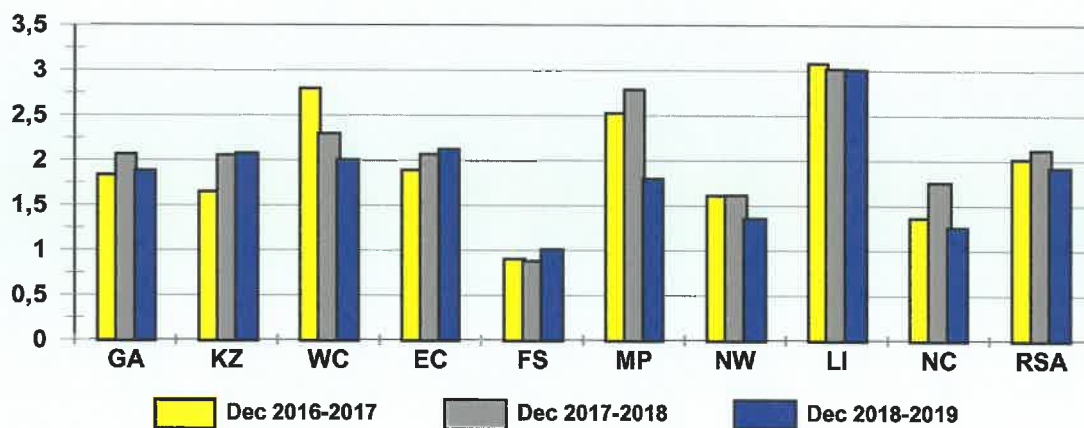


Figure 23: Percentage Annual Growth in Vehicle Population

Over the past year from December 2018 to December 2019 the highest percentage growth in total vehicles was recorded in Limpopo with a growth of 3.00% followed by Eastern Cape with a growth of 2.12%.

The percentage vehicles registered per province as on 31 December 2019 is reflected in the figure below.

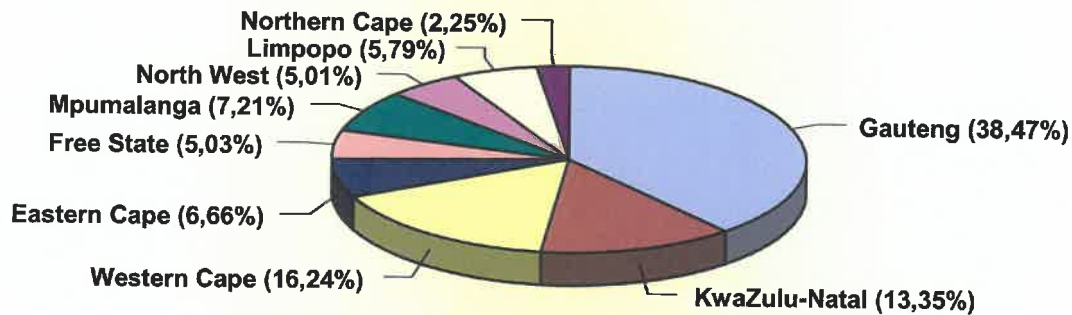


Figure 24: Percentage Vehicles Registered per Province

The information in the figure above shows that 38.47% of all vehicles were registered in Gauteng; 16.24% in Western Cape and 13.35% in Kwa-Zulu Natal.

More detailed information on the number of vehicles per type registered per Province for December 2018 and December 2019 is given in the table under **Appendix A**.

2.2 Human Population and Mobility

The estimated human population for each year from 2016 to 2019 is given in table below. (These figures are estimates from the mid-year estimates released annually by Stats SA).

Month	Province									Total
	GA	KZ	WC	EC	FS	MP	NW	LI	NC	RSA
Dec 2016	13,58	11,28	6,34	7,14	2,87	4,40	3,79	5,89	1,20	56,48
Dec 2017	13,61	11,24	6,34	7,14	2,87	4,38	3,80	5,87	1,20	56,45
Dec 2018	14,13	11,36	6,49	6,93	2,89	4,48	3,86	5,91	1,22	57,28
Dec 2019	14,49	11,64	6,60	7,02	2,95	4,55	3,94	5,98	1,23	58,41

Table 5: Estimated mid-month human population per province - million

Based on the information on human and vehicle populations, the average number of persons per vehicle per Province (excluding trucks, towed vehicles and "other" and "unknown" vehicles) at the end of December 2016, 2017, 2018 and 2019 is shown in the table and reflected in the figure below.

Month	GA	KZ	WC	EC	FS	MP	NW	LI	NC	RSA
Dec 2016	3,39	8,10	3,82	10,42	6,10	6,59	7,69	10,29	5,57	5,56
Dec 2017	3,33	7,85	3,71	10,19	6,03	6,39	7,56	9,92	5,47	5,43
Dec 2018	3,38	7,76	3,72	9,68	6,00	6,35	7,52	9,69	5,44	5,38
Dec 2019	3,40	7,78	3,71	9,59	6,04	6,30	7,55	9,49	5,43	5,38

Table 6: Average number of persons per vehicle (excluding trucks, other, unknown and towed vehicles)

Av. No. of Persons per Vehicle
 (excluding trucks, other and trailers)

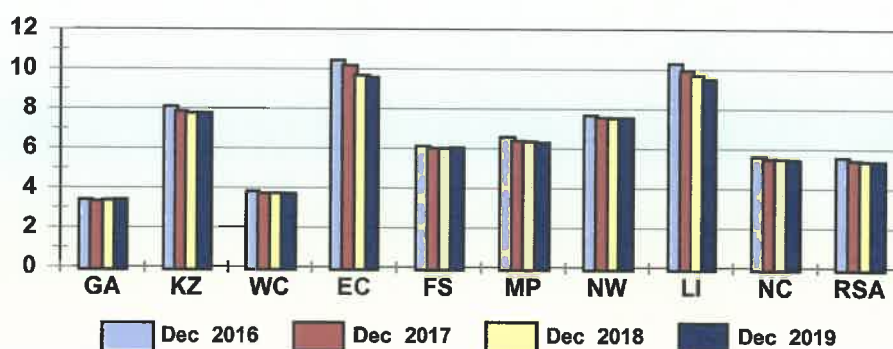


Figure 25: Average number of persons per vehicle (excluding trucks, other and trailer)

The percentage annual change or improvement in human mobility per province is reflected in table below.

Month	Province									Total
	GA	KZ	WC	EC	FS	MP	NW	LI	NC	RSA
Dec 2016-2017	1,88	3,03	2,81	2,27	1,23	3,00	1,66	3,55	1,90	2,41
Dec 2017-2018	-1,60	1,15	-0,16	4,96	0,52	0,63	0,51	2,39	0,43	0,78
Dec 2018-2019	-0,51	-0,22	0,24	0,96	-0,77	0,69	-0,40	2,01	0,29	0,09

Table 7: Percentage improvement in mobility per province

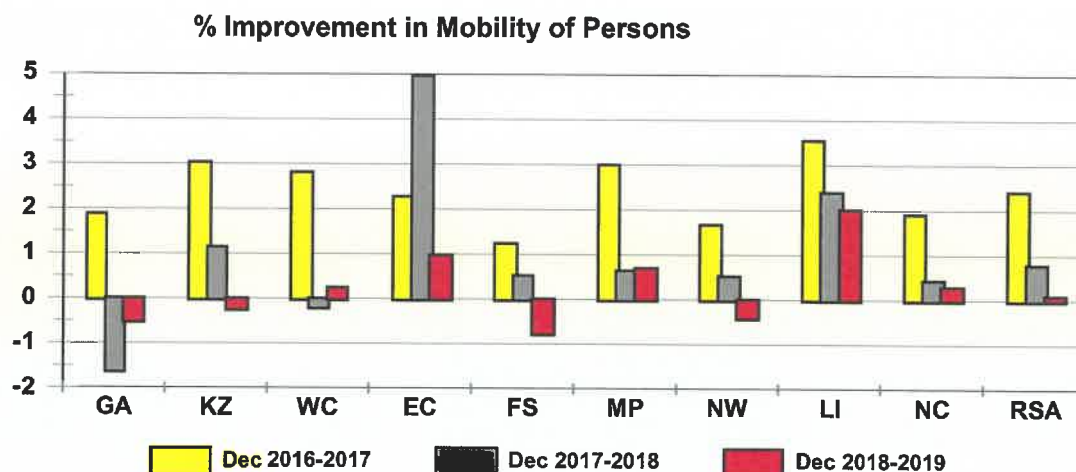


Figure 26: Percentage improvement in mobility of persons

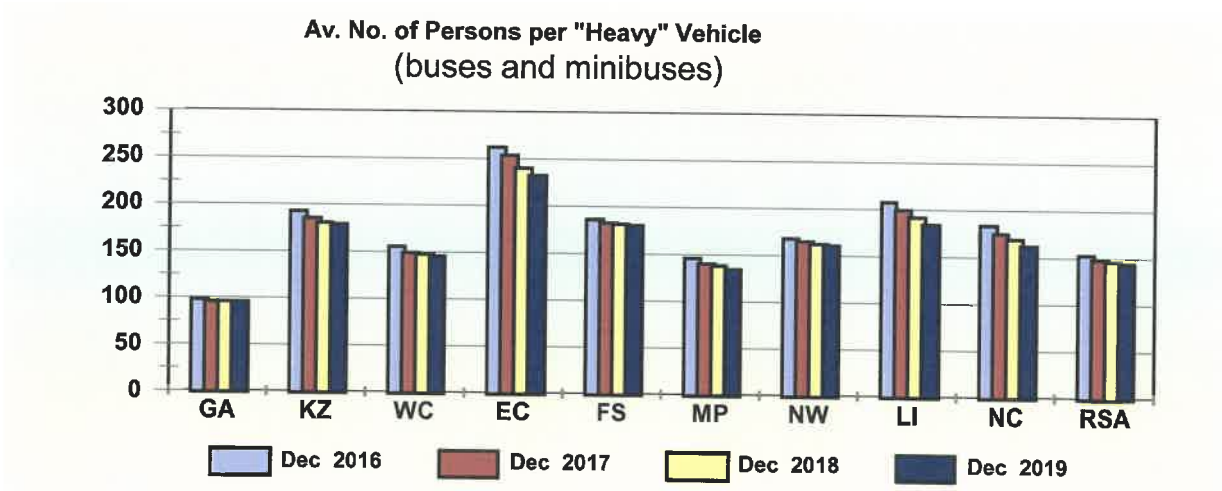
The information in tables and figures above shows that on a national basis the general overall mobility in terms of the number of persons per road vehicle (vehicles that can reasonably transport passengers – motorcars, minibuses, buses, motorcycles and LDV’s “bakkies”), improved by 0.78% from a national average of 5.43 persons per vehicle at the end of December 2017 to 5.38 persons per vehicle at the end of December 2018. From the end of December 2018 to December 2019 the improvement shows a decrease of 0.09%, from 5.38 to 5.38 persons per vehicle.

Although they do show some improvement, the “least mobile” Provinces remain Eastern Cape with 9.59 persons per vehicle; followed by the Limpopo with 9.49 persons per vehicle at the end of December 2019. The “most mobile” Provinces are Kwa-Zulu Natal and the North West with an average of 7.78 and 7.55 persons per vehicle respectively at the end of December 2019.

The average number of persons per “heavy” road passenger transport vehicle (buses and minibuses) is shown in table below and reflected in the figure below.

Month	GA	KZ	WC	EC	FS	MP	NW	LI	NC	RSA
Dec 2016	97	192	155	262	186	145	167	208	183	153
Dec 2017	95	185	149	254	182	140	165	199	175	148
Dec 2018	95	180	147	240	181	138	162	191	169	145
Dec 2019	95	179	145	232	180	134	160	184	162	143

Table 8: Average number of persons per "heavy" passenger transport vehicle (buses and minibuses)



**Figure 27: Average number of persons per " heavy vehicles"
(buses and minibuses)**

The percentage annual change or improvement in the number of persons per "heavy" passenger road transport vehicle per province is reflected in the table below.

Month	Province									Total RSA
	GA	KZ	WC	EC	FS	MP	NW	LI	NC	
Dec 2016-2017	2,46	3,89	4,37	3,23	2,07	3,96	1,68	4,03	4,74	3,22
Dec 2017-2018	-0,51	2,44	0,88	5,28	0,69	1,38	1,56	4,04	3,35	1,87
Dec 2018-2019	-0,02	0,81	1,57	3,44	0,68	2,66	1,09	3,77	4,15	1,35

Table 9: Percentage improvement on average number of persons per "heavy" passenger transport vehicles (buses and minibuses)

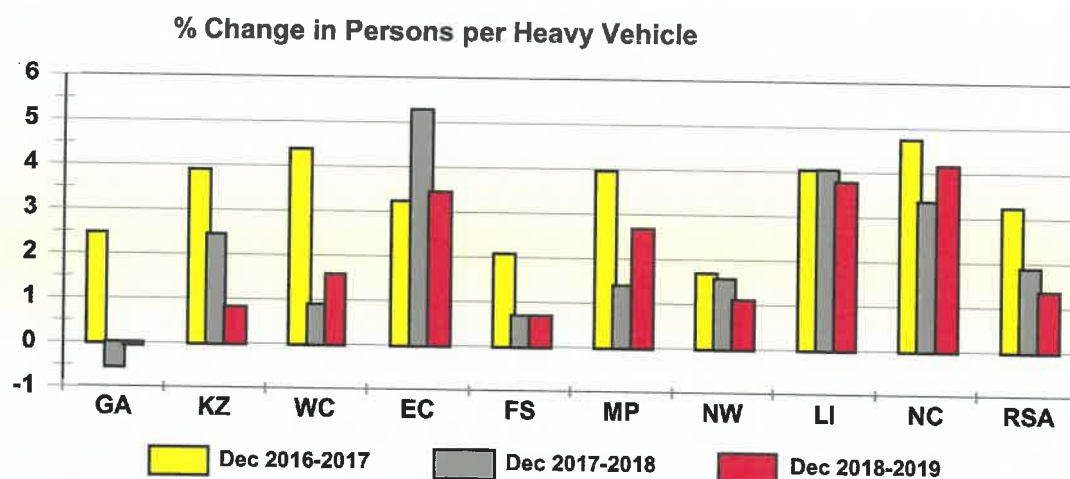


Figure 28: Average number of persons per " heavy vehicles" (buses and minibuses)

The information in tables and figure above show that, since the previous year-on-year improvement, the national overall mobility and quality of public road transport in terms of the number of persons per “heavy” passenger road transport vehicle from December 2018 to December 2019 increased by 1.35% from 145 persons per vehicle to 143 persons per vehicle.

On a Provincial percentage basis, the highest improvement was in the Northern Cape where the average number of persons per vehicle changed by 4.15% from about 169 persons per vehicle in December 2018 to 162 persons per vehicle at the end of December 2019. In Limpopo the improvement was 3.77% from 191 to 184.

The average number of “heavy” road passenger transport vehicle (buses and minibuses) per 10,000 human population per Province is shown in the table below and reflected in the figure below.

Month	GA	KZ	WC	EC	FS	MP	NW	LI	NC	RSA
Dec 2016	103	52	64	38	54	69	60	48	55	65
Dec 2017	105	54	67	39	55	72	61	50	57	68
Dec 2018	105	55	68	42	55	73	62	52	59	69
Dec 2019	105	56	69	43	56	75	62	54	62	70

Table 10: Average number of public transport vehicles (buses and minibuses) per 10,000 human population

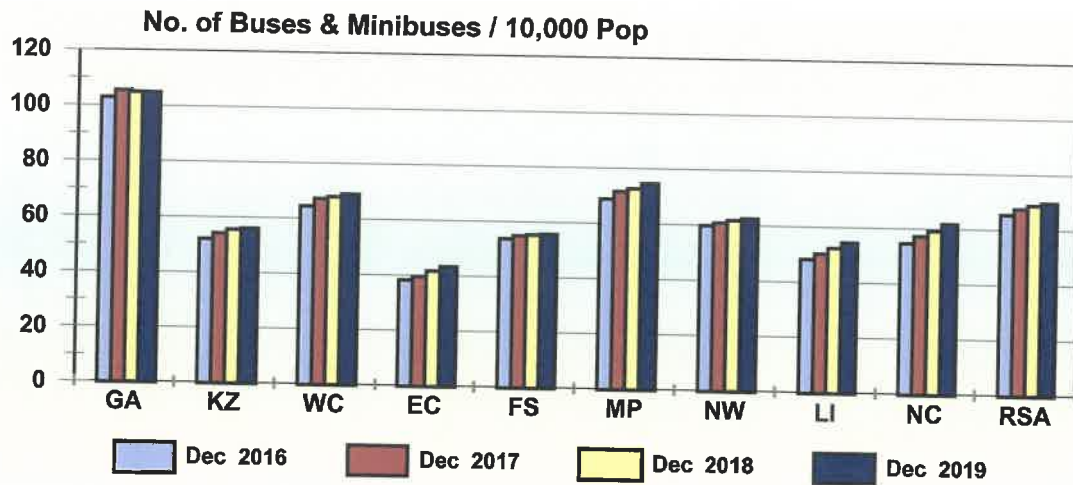


Figure 29: Number of buses and minibuses / 10,000 human population

2.3 Un-Roadworthy and Un-Licensed Vehicles

2.3.1 General

Un-roadworthy vehicles is defined as those of which the owners failed to submit the vehicles for compulsory annual roadworthy tests (including buses, minibus taxis and freight transport vehicles) or on change of ownership. Un-licensed vehicles are those of which the owners failed to renew the vehicle licences within the time frame allowed.

On a national basis the total number of vehicles that are either un-roadworthy, un-licensed or both increased by 105 543 (9.91%) from 1 064 623 vehicles as on 31 December 2017 to 1 170 166 vehicles as on 31 December 2018. Detail in this regard per type of vehicle is provided in the table below and the percentage (%) change from 2017 to 2018 reflected in the figure below.

Number of Un-Roadworthy, Un-Licensed Vehicles or Both				
Vehicle Type	Dec 2017	Dec 2018	Change	% Change
Motorcars	570 754	625 878	55 124	9,66
Minibuses	55 209	59 911	4 702	8,52
Buses	8 993	9 871	878	9,76
Motorcycles	65 228	68 473	3 245	4,97
LDV's - Bakkies	180 440	198 099	17 659	9,79
Trucks	62 009	65 462	3 453	5,57
Caravans	7 035	8 047	1 012	14,39
Heavy Trailers	23 984	25 924	1 940	8,09
Light Trailers	61 860	75 718	13 858	22,40
Unknown	29 111	32 783	3 672	12,61
All Vehicles	1 064 623	1 170 166	105 543	9,91

Table 11: Number of un-roadworthy, un-licensed vehicles or both

All the vehicles have recorded increases in this regard. The biggest increase recorded was for light trailers with 22.40% followed minibuses with 14.39%.

Detail on the number of vehicles that are either un-roadworthy, un-licenced or both per Province is provided in the table below and the percentage (%) change from 2017 to 2018 reflected in the figure below.

Year	GA	KZN	WC	EC	FS	MP	NW	LI	NC	RSA
Dec 2017	445 565	130 986	135 421	68 569	60 350	84 121	57 141	60 747	21 723	1 064 623
Dec 2018	488 933	143 785	147 940	79 064	65 754	89 611	63 701	66 802	24 576	1 170 166
Change	43 368	12 799	12 519	10 495	5 404	5 490	6 560	6 055	2 853	105 543
% Change	9,73	9,77	9,24	15,31	8,95	6,53	11,48	9,97	13,13	9,91

Table 12: Number of vehicles that are un-roadworthy or un-licenced or both

The information in tables and figures above shows that all provinces have recorded an increase in this regard. The highest percentage change increase has been recorded for Eastern Cape with 15.31% followed by Northern Cape with 13.13%.

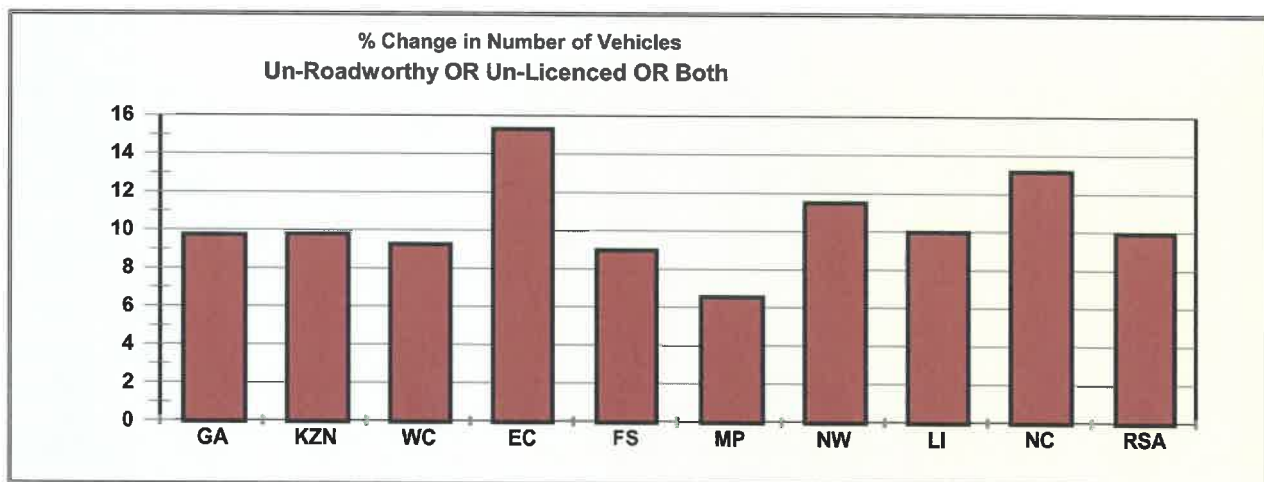


Figure 30: Percentage change in number of vehicles un-roadworthy or un-licenced or both

2.3.2 Number of Un-Roadworthy Vehicles

The number of vehicles that are un-roadworthy (but licenced) increased by 27 353 (4.98%) from 548 820 vehicles as on 31 December 2017 to 576 173 vehicles as on 31 December 2018. Detail in this regard is given in the table below and the percentage of un-roadworthy vehicles per type of vehicle, as a percentage of the number registered, is reflected in the figure below.

Number of Un-Roadworthy Vehicles				
Vehicle Type	Dec 2017	Dec 2018	Change	% Change
Motorcars	266 143	279 059	12 916	4,85
Minibuses	35 970	39 065	3 095	8,60
Buses	7 097	7 734	637	8,98
Motorcycles	37 161	37 381	220	0,59
LDV's - Bakkies	86 430	89 793	3 363	3,89
Trucks	48 319	50 339	2 020	4,18
Caravans	3 747	3 786	39	1,04
Heavy Trailers	19 848	21 787	1 939	9,77
Light Trailers	24 731	26 758	2 027	8,20
Unknown	19 374	20 471	1 097	5,66
All Vehicles	548 820	576 173	27 353	4,98

Table 13: Number of un-roadworthy vehicles

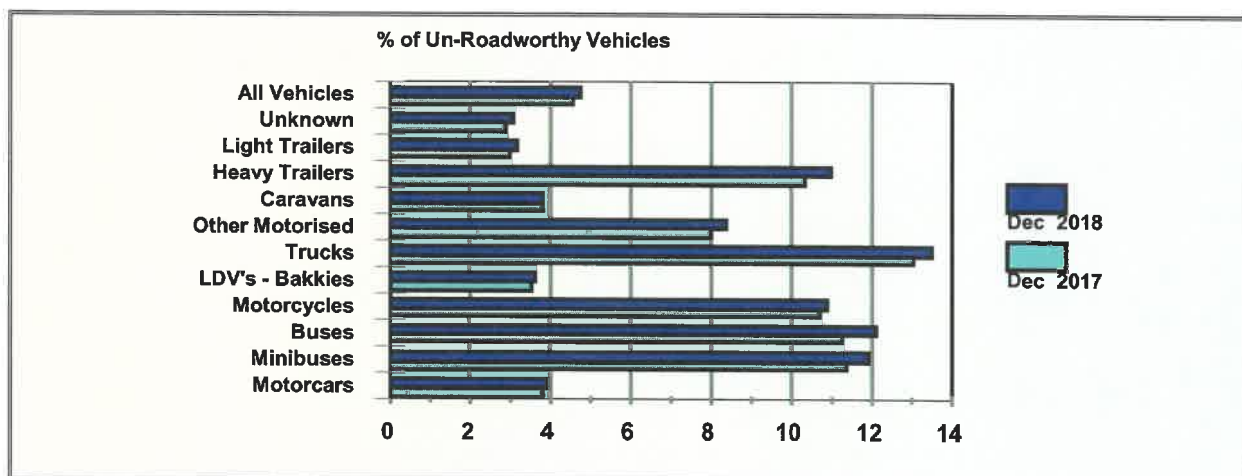


Figure 31: Percentage of un-roadworthy vehicles

The information in the table and figure above shows that all vehicle types have recorded an increase in this regard. The highest increase for un-roadworthy vehicles was recorded for heavy trailer with an increase of 1 939 (9.77%) from 19 848 at the end of December 2017 to 21 787 at the end of December 2018.

Details with regards to the number of vehicles that are un-roadworthy per Province are provided in the table below and the percentage (%) change from 2017 to 2018 reflected in the figure below.

Year	GA	KZN	WC	EC	FS	MP	NW	LI	NC	RSA
Dec 2017	240 086	66 540	70 213	30 636	34 291	42 387	28 099	25 822	10 746	548 820
Dec 2018	258 416	66 423	73 843	31 715	35 128	43 614	29 127	26 811	11 096	576 173
Change	18 330	-117	3 630	1 079	837	1 227	1 028	989	350	27 353
% Change	7,63	-0,18	5,17	3,52	2,44	2,89	3,66	3,83	3,26	4,98

Table 14: Number of un-roadworthy vehicles

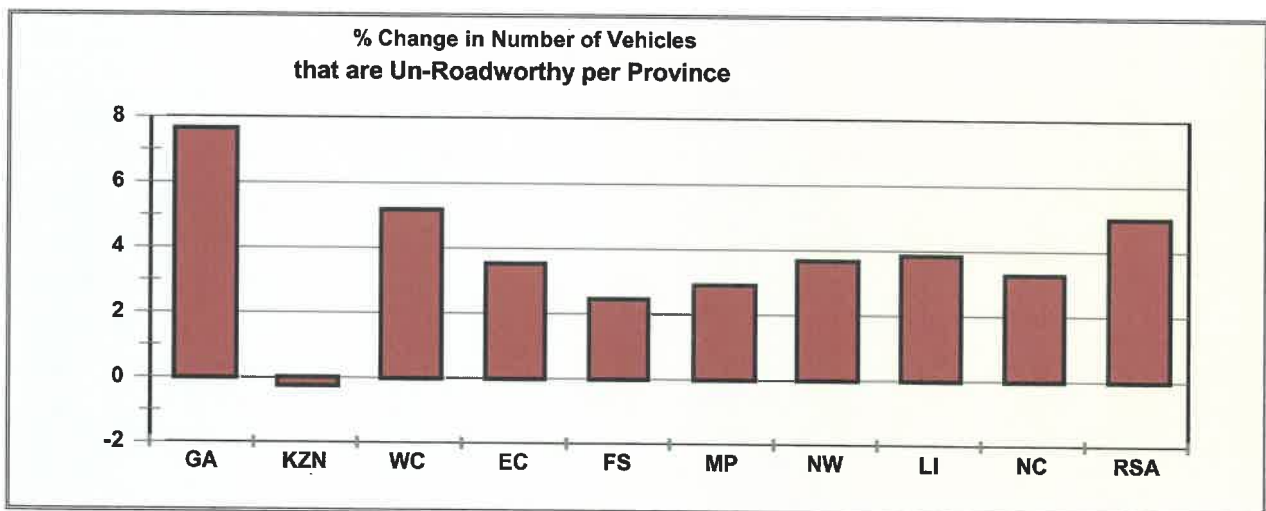


Figure 32: Percentage change in number of vehicles that are un-roadworthy per province

The information in the table and figure above shows that with exception of Kwa-Zulu Natal, all other provinces recorded increase in the number of un-roadworthy vehicles. On a percentage basis the highest increase was recorded in Gauteng where the number of un-roadworthy vehicles increased by 18 330 (7.63%) from 240 086 in 2017 to 258 416 at the end of December 2018. Other increase in this regard recorded was in Western Cape with an increase of 5.17%.

The percentage of un-roadworthy vehicles per Province, expressed as a percentage of the total number of vehicles registered per province, is shown in the figure below.

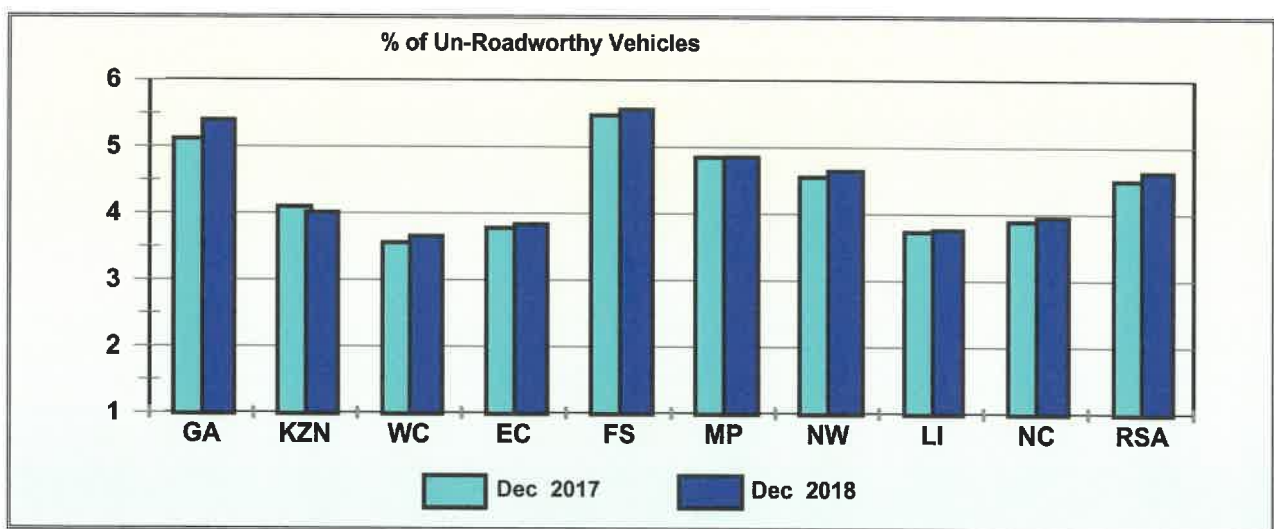


Figure 33: Percentage of un-roadworthy vehicles

2.3.3 Number of Un-Licensed Vehicles

On a national basis the number of un-licensed vehicles increased by 73 857 (16.09%) from 458 938 vehicles as on 31 December 2017 to 532 795 vehicles as on 31 December 2018.

Detail per type of vehicle in this regard is given in the table below and the percentage of un-licensed vehicles per type of vehicle, as a percentage of the number registered, is reflected in the figure below.

Number of Un-Licensed Vehicles				
Vehicle Type	Dec 2017	Dec 2018	Change	% Change
Motorcars	273 732	314 256	40 524	14,80
Minibuses	14 839	16 295	1 456	9,81
Buses	1 467	1 649	182	12,41
Motorcycles	23 647	26 229	2 582	10,92
LDV's - Bakkies	84 397	98 062	13 665	16,19
Trucks	10 852	11 883	1 031	9,50
Caravans	3 012	3 893	881	29,25
Heavy Trailers	3 368	3 424	56	1,66
Light Trailers	34 911	46 170	11 259	32,25
Unknown	8 713	10 934	2 221	25,49
All Vehicles	458 938	532 795	73 857	16,09

Table 15: Number of un-licensed vehicles

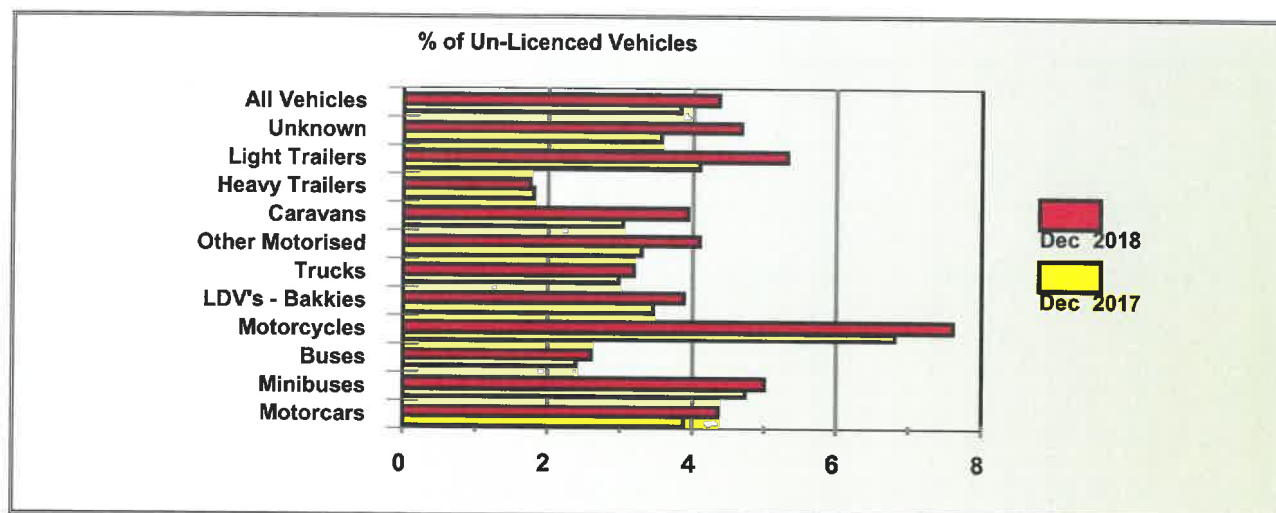


Figure 34: Percentage of un-licensed vehicles

The information in the table and figure above shows that all vehicle types recorded an increase with regard to the number of un-licensed vehicles. On a percentage basis the highest increase was recorded for light trailer with 32.25% from 34 911 to 46 170, followed by caravans with 29.25%.

Detail on the number of vehicles that are un-licensed per Province is provided in the table below and the percentage (%) change from 2017 to 2018 reflected in the figure below.

Year	GA	KZN	WC	EC	FS	MP	NW	LI	NC	RSA
Dec 2017	184 767	57 141	57 906	33 615	22 501	36 349	25 908	30 950	9 801	458 938
Dec 2018	208 374	69 763	66 102	42 486	26 631	40 552	31 083	35 783	12 021	532 795
Change	23 607	12 622	8 196	8 871	4 130	4 203	5 175	4 833	2 220	73 857
% Change	12,78	22,09	14,15	26,39	18,35	11,56	19,97	15,62	22,65	16,09

Table 16: Number of un-licensed vehicles

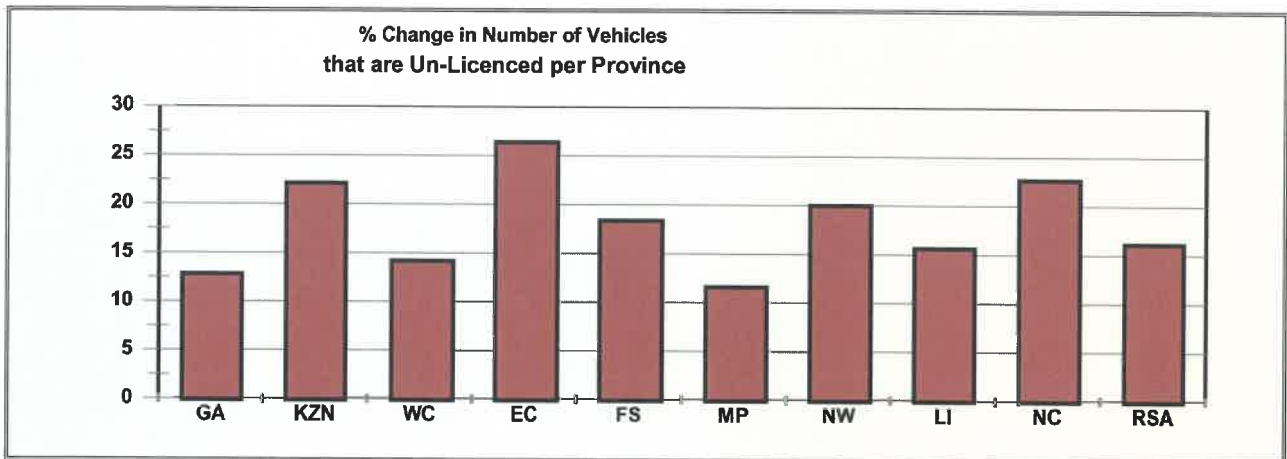


Figure 35: Percentage change in number of vehicle that are un-licensed per province

The information in the table and figure above shows that the highest increase in the number of un-licensed vehicles were recorded in Eastern Cape with 26.39%, followed by Northern Cape with 22.65%).

The percentage of un-licensed vehicles per type of vehicle, as a percentage of the number registered per Province, is reflected in the figure below.

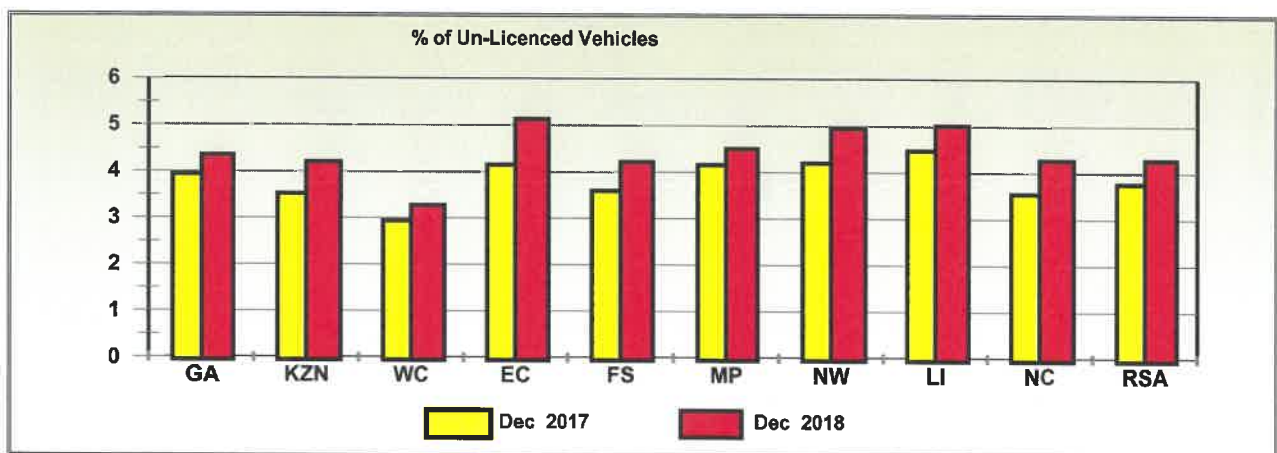


Figure 36: Percentage of un-licensed vehicles

Detailed information on the number of un-roadworthy and un-licenced vehicles per type of vehicle per Province is provided in the tables under **Appendix B**.

3. DRIVER POPULATION

3.1 Learner Driving Licences

The number of learner driving licences issued decreased by 1 759 (0.15%) from 1 171 788 on 31 December 2018 to 1 170 029 on 31 December 2019. Detail on the number of learner driving licences issued per category is given in table below and graphically reflected in the figure below.

Category	Dec 2018	Dec 2019	Change	% Change
1	39 688	38 971	-717	-1,81
2	238 702	231 752	-6 950	-2,91
3	893 398	899 306	5 908	0,66
Total	1 171 788	1 170 029	-1 759	-0,15

Table 17: Number of learner licences issued

No. of Learner Driving Licences Issued

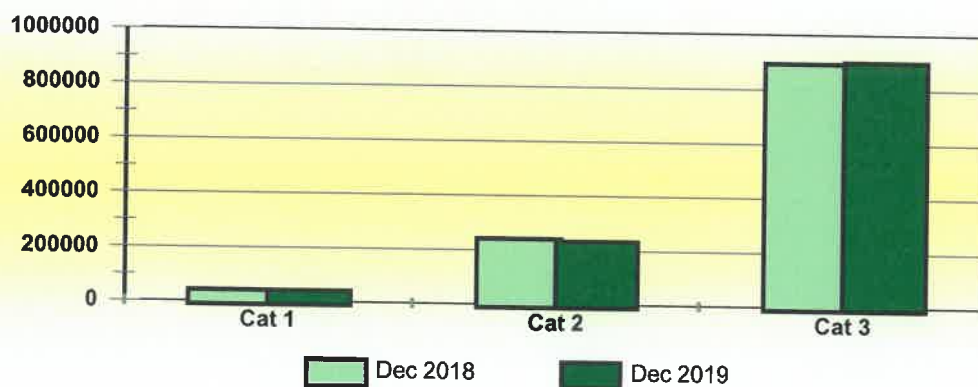


Figure 37: Number of learner licenses issues

Provincial information in this regard is given in the table below and the percentage change per Province over the 12-month period is reflected in the figure below.

Year	GA	KZ	WC	EC	FS	MP	NW	LI	NC	RSA
Dec 2018	331 686	190 755	180 998	99 574	67 847	104 965	60 808	105 836	29 319	1 171 788
Dec 2019	349 994	189 685	173 645	100 219	65 557	105 485	61 133	96 213	28 098	1 170 029
Change	18 308	-1 070	-7 353	645	-2 290	520	325	-9 623	-1 221	-1 759
% Change	5,52	-0,56	-4,06	0,65	-3,38	0,50	0,53	-9,09	-4,16	-0,15

Table 18: Number of learners licences issued per province

With exception of Gauteng, Eastern Cape, Mpumalanga and North West, other provinces recorded a decrease with regards to the number of Learner Licences issued. The highest decrease was recorded for Limpopo with 9.09% followed by Northern Cape with 4.16%.

% Change in Learner Licences Issued

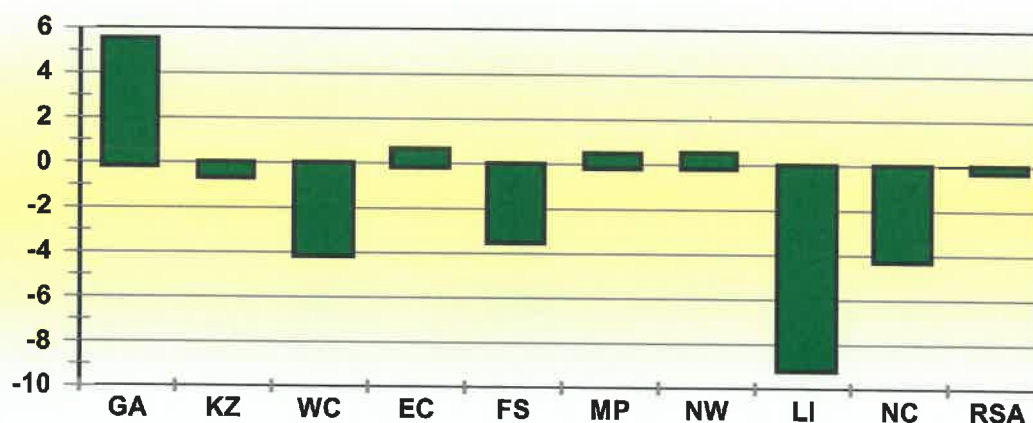


Figure 38: Percentage change in learner licenses issued per province

3.2 Driving Licences Issued and Expired

3.2.1 Number of Driving Licences Issued

The number of driving licences issued increased by 491 744 (3.77%) from 13 055 317 on 31 December 2018 to 13 547 061 as of 31 December 2019. Details on the number of driving licences issued per category is given in table and graphically reflected in the figure below.

Category	Dec 2018	Dec 2019	Change	% Change
A	485 418	492 545	7 127	1,47
A1	122 642	122 599	-43	-0,04
B	2 943 761	3 056 535	112 774	3,83
C	23 551	24 194	643	2,73
C1	4 168 879	4 494 607	325 728	7,81
EB	3 636 856	3 641 023	4 167	0,11
EC	1 087 803	1 130 558	42 755	3,93
EC1	586 407	585 000	-1 407	-0,24
Total	13 055 317	13 547 061	491 744	3,77

Table 19: Number of driving licences issued

Driving licences:

A	Motorcycle > 125 cub.cm	A1	Motorcycle < 125 cub.cm	B	Motor vehicle < 3,5000 kg
C	Motorvehicle > 16,000 kg	C1	Motor vehicle 3,500 – 16,000 kg	EB	Articulated motor vehicle <16,000 kg
		EC	Articulated vehicle > 16,000 kg	EC1	Articulated vehicle 3,500 – 16,000 kg

No. of Driving Licences Issued

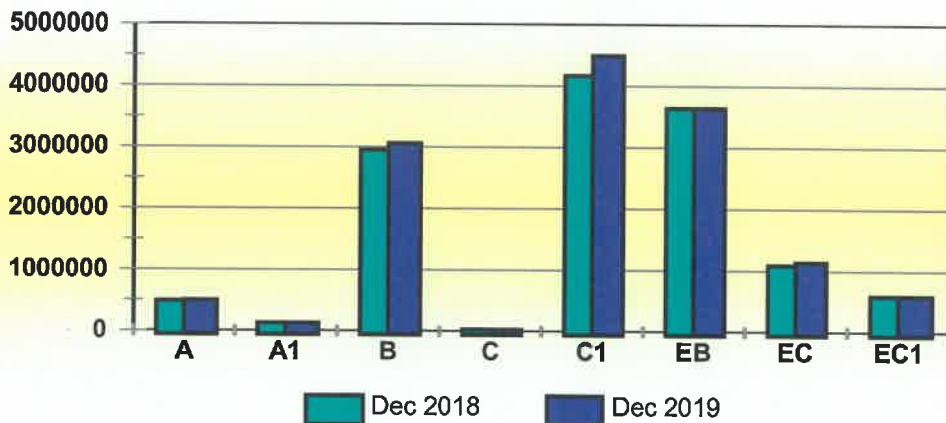


Figure 39: Number of driving licenses issued

The information contained in the table above depict that the highest percentage change was recorded for Categories C1, B, C and EC with percentages of 7.81%, 3.83%, 2.73% and 3.93% respectively.

The number and percentage (%) of driving licences issued per category at the end of December 2019 is reflected in the table below.

Category	Description	Number	%
A	Motorcycle < 125 cub.cm	492 545	3,64
A1	Motorcycle > 125 cub.cm	122 599	0,90
B	Motor vehicle < 3,5000 kg	3 056 535	22,56
C	Articulated motor vehicle <16,000 kg	24 194	0,18
C1	Motor vehicle 3,500 - 16,000 kg	4 494 607	33,18
EB	Articulated vehicle 3,500 - 16,000 kg	3 641 023	26,88
EC	Motorvehicle > 16,000 kg	1 130 558	8,35
EC1	Articulated vehicle > 16,000 kg	585 000	4,32
Total		13 547 061	100

Table 20: Number and percentage of driving licences issued per category

Provincial information in this regard is given in the table below and the percentage change with regard to all licences issued per province is reflected in the figure below.

Year	GA	KZ	WC	EC	FS	MP	NW	LI	NC	RSA
Dec 2018	4 533 979	2 094 835	1 987 803	956 440	651 552	962 199	620 560	1 004 930	243 019	13 055 317
Dec 2019	4 718 545	2 174 131	2 044 146	991 293	669 565	1 008 404	640 353	1 049 458	251 166	13 547 061
Change	184 566	79 296	56 343	34 853	18 013	46 205	19 793	44 528	8 147	491 744
% Change	4,07	3,79	2,83	3,64	2,76	4,80	3,19	4,43	3,35	3,77

Table 21: Number of driving licences issued per province

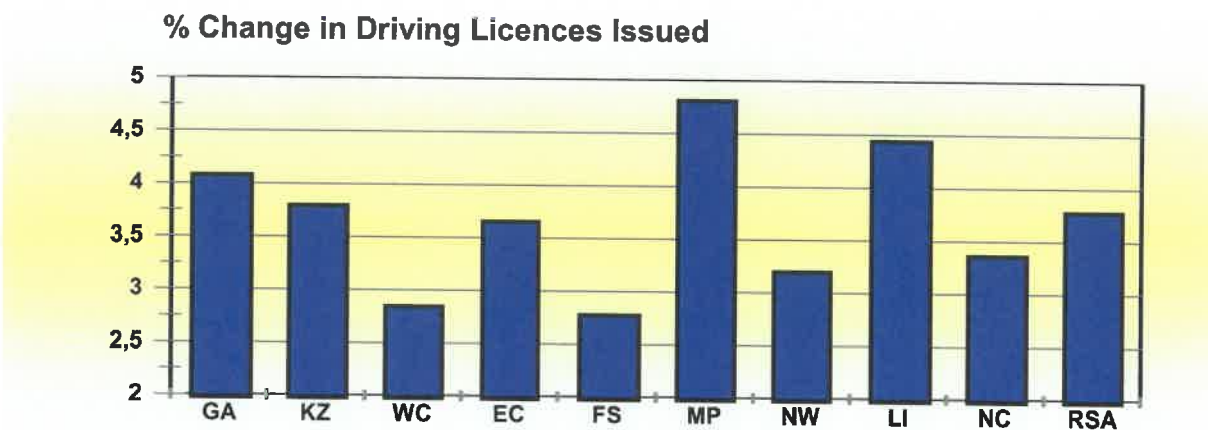


Figure 40: Percentage change in driving licenses issued

3.2.2 Number of Driving Licence Cards Expired

The information in Table below shows that as on 31 December 2019 there were 2 740 692 expired driving licence cards recorded on the National Traffic Information System (NaTIS). This figure represents 20.23% of all driving licences issued. This information is also reflected in the figure below.

Category	GA	KZ	WC	EC	FS	MP	NW	LI	NC	RSA
On system	4 718 545	2 174 131	2 044 146	991 293	669 565	1 008 404	640 353	1 049 458	251 166	13 547 061
Not expired	3 806 368	1 701 361	1 645 698	734 230	513 291	825 942	514 272	862 033	203 174	10 806 369
Expired	912 177	472 770	398 448	257 063	156 274	182 462	126 081	187 425	47 992	2 740 692
% Expired	19,33	21,75	19,49	25,93	23,34	18,09	19,69	17,86	19,11	20,23

Table 22: Number of driving licences cards issued and expired per province 2018

% Expired Driving Licence Cards

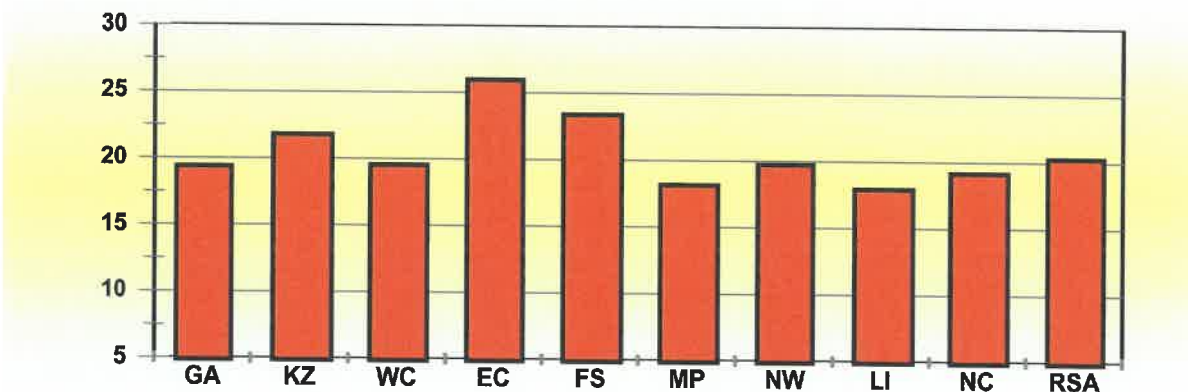


Figure 41: Percentage expired driving license cards

3.3 Professional Driving Permits Issued and Expired

3.3.1 Number of Professional Driving Permits Issued

The number of Professional Driving Permits (PrDP's) issued increased by 38 809 (3.59%) from 1 081 051 on 31 December 2018 to 1 119 860 on 31 December 2019. Detail on the number of PrDPs issued per category is given in table below and graphically reflected in the figure below.

Category	Dec 2018	Dec 2019	Change	% Change
G	8 527	7 980	-547	-6,41
P G	1 030 056	1 067 195	37 139	3,61
D G	166	131	-35	-21,08
D P G	42 302	44 554	2 252	5,32
Total	1 081 051	1 119 860	38 809	3,59

Table 23: Number of PrDP's issued

Professional Driving Permits (PrDPs)

G: Goods

P: Passengers

D: Dangerous goods

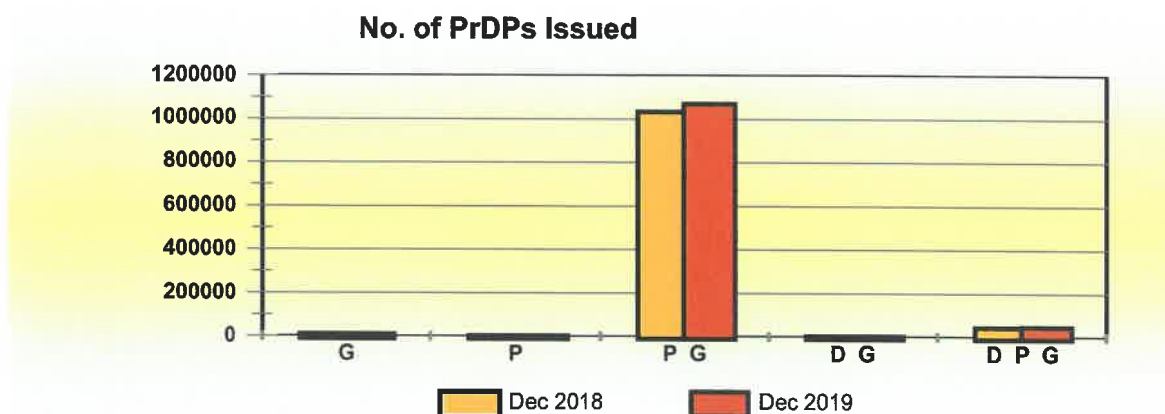


Figure 42: Number of PrDP's issued

Provincial information in this regard is given in the table below and the percentage change with regard to all categories of PrDP's issued per Province is reflected in the figure below.

Year	GA	KZ	WC	EC	FS	MP	NW	LI	NC	RSA
Dec 2018	288 966	192 936	153 864	88 052	66 675	104 531	53 208	107 670	25 149	1 081 051
Dec 2019	301 146	198 490	161 240	93 115	67 620	108 872	54 333	109 210	25 834	1 119 860
Change	12 180	5 554	7 376	5 063	945	4 341	1 125	1 540	685	38 809
% Change	4,22	2,88	4,79	5,75	1,42	4,15	2,11	1,43	2,72	3,59

Table 24: Number of professional driving permits (PrDP's) issued per province

% Change in PrDPs Issued

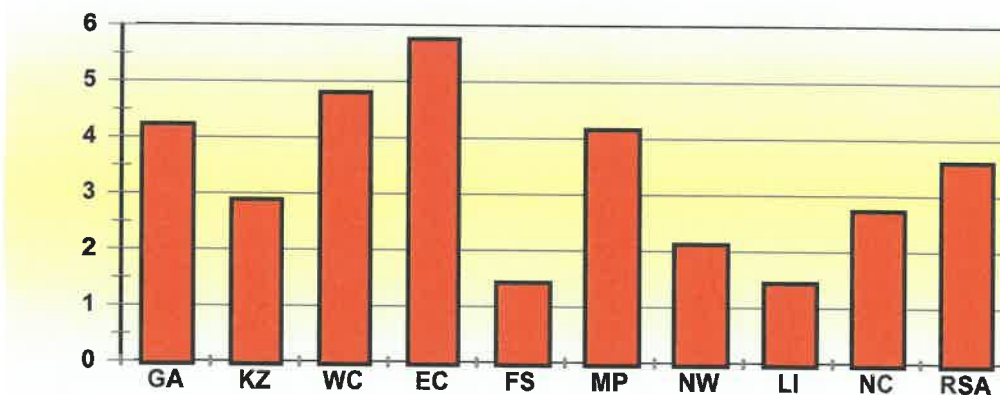


Figure 43: Percentage in PrDP's issued

3.3.2 Number of Expired PrDPs

The information in the table below shows that on 31 December 2019 there were 498 731 expired Professional Driving Permits (PrDPs) recorded on the National Traffic Information System (NaTIS). This figure represents 44.54% of all PrDPs issued. This information is also reflected in the figure below.

Category	GA	KZ	WC	EC	FS	MP	NW	LI	NC	RSA
On system	301 146	198 490	161 240	93 115	67 620	108 872	54 333	109 210	25 834	1 119 860
Not expired	152 932	108 379	94 659	53 813	44 073	63 152	28 326	62 006	13 789	621 129
Expired	148 214	90 111	66 581	39 302	23 547	45 720	26 007	47 204	12 045	498 731
% Expired	49,22	45,40	41,29	42,21	34,82	41,99	47,87	43,22	46,62	44,54

Table 25: Number of professional driving permits (PrDP's) issued and expired per province 2018

% Expired Professional Driving Permits

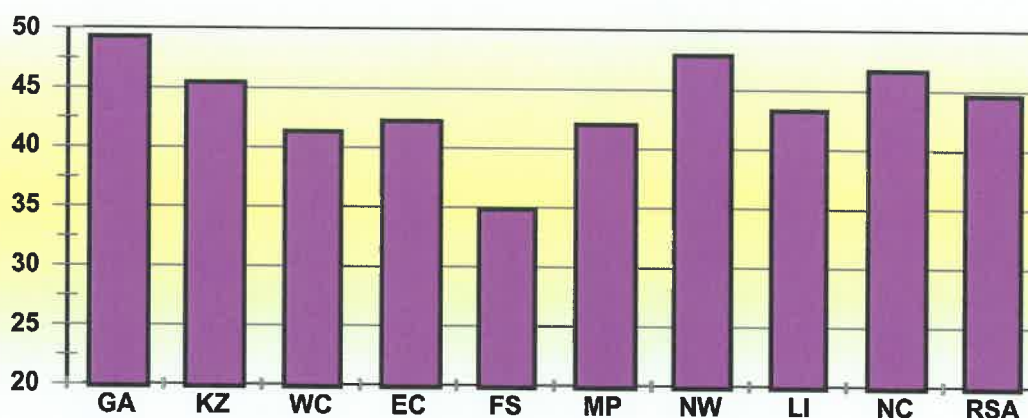



Figure 44: Percentage expired professional driving permits

Provinces that recorded the highest increase of expired PrDPs were recorded in Gauteng and North West with 49.22% and 47.87% respectively.

Detailed information on the number of learner licences, driving licences and PrDPs per Province is provided in the tables under **Appendix C**.

Reviewed and Supported by



.....

Mr Kevin Kara-Vala

EM: RTI & T

Date:

Recommended by



.....

Adv. Makhosini Msibi

CEO

30/01/2020
.....

Date

Approved by



.....

Mr Zola Majavu CD (SA)
CHAIRMAN OF THE BOARD

30/01/2020
.....

Date



APPENDIX A

Dec 2018	Number of Registered Vehicles per Province									Total RSA
	GA	KZ	WC	EC	FS	MP	NW	LI	NC	
Motorised Veh's										
Motorcars	3 054 378	1 004 449	1 283 169	459 546	316 238	433 542	321 994	338 247	129 177	7 340 740
Minibuses	127 286	54 994	36 885	24 473	12 786	24 338	19 598	24 174	5 489	330 023
Buses	20 985	7 996	7 186	4 400	3 194	8 182	4 209	6 764	1 736	64 652
Motorcycles	140 792	31 191	85 496	21 798	18 618	18 479	13 145	9 096	8 002	346 617
LDV's - Bakkies	836 364	364 622	333 094	205 976	131 274	220 691	153 821	232 217	79 788	2 557 847
Trucks	138 528	49 141	44 723	22 306	21 862	47 791	17 641	25 917	9 181	377 090
Other & Unkwn	38 521	33 629	41 559	18 150	37 222	29 318	23 970	18 467	10 008	250 843
Sub-Total	4 356 854	1 546 022	1 832 112	756 649	541 194	782 341	554 378	654 882	243 381	11 267 812
Towed Veh's										
Caravans	38 434	7 122	18 137	5 159	7 486	10 070	6 280	5 489	2 729	100 906
Heavy Trailers	61 543	23 475	22 268	7 141	18 234	40 475	11 034	9 486	5 754	199 410
Light Trailers	336 276	82 536	148 069	57 593	63 351	65 448	53 959	42 939	29 166	879 337
Unknown	2 396	1 497	2 205	1 528	1 943	1 884	2 196	1 197	670	15 515
Sub-Total	438 649	114 630	190 679	71 421	91 014	117 877	73 469	59 111	38 319	1 195 168
All Vehicles	4 795 503	1 660 652	2 022 790	828 069	632 208	900 217	627 847	713 993	281 700	12 462 979

Dec 2019	Province									Total RSA
	GA	KZ	WC	EC	FS	MP	NW	LI	NC	
Motorised Veh's										
Motorcars	3 119 017	1 027 531	1 306 677	471 061	321 190	444 760	328 427	349 302	130 983	7 498 948
Minibuses	131 501	56 992	38 208	25 669	13 080	25 483	20 389	25 580	5 833	342 735
Buses	20 485	8 081	7 274	4 618	3 347	8 502	4 216	6 919	1 787	65 229
Motorcycles	139 648	30 639	85 785	21 604	18 177	18 045	12 768	8 949	7 776	343 391
LDV's - Bakkies	853 193	372 801	339 761	209 526	132 647	225 589	156 292	239 029	80 907	2 609 745
Trucks	140 296	50 297	46 671	22 431	21 951	46 222	17 355	26 459	9 028	380 710
Other & Unkwn	38 681	33 304	42 130	18 370	36 604	29 150	23 165	18 570	10 097	250 069
Sub-Total	4 442 821	1 579 645	1 866 506	773 279	546 996	797 751	562 612	674 808	246 411	11 490 827
Towed Veh's										
Caravans	37 520	6 969	18 377	5 140	7 299	9 910	6 171	5 476	2 728	99 590
Heavy Trailers	64 166	24 147	25 078	7 368	18 918	40 358	11 058	10 104	5 720	206 917
Light Trailers	338 939	82 864	151 158	58 307	63 449	66 511	54 373	43 891	29 693	889 185
Unknown	2 303	1 450	2 180	1 520	1 888	1 822	2 107	1 170	672	15 110
Sub-Total	442 928	115 430	196 793	72 335	91 554	118 601	73 709	60 641	38 813	1 210 802
All Vehicles	4 885 748	1 695 075	2 063 299	845 614	638 550	916 351	636 321	735 448	285 223	12 701 629

% Change Dec 2019 - 2020	Number of Registered Vehicles per Province									Total RSA
	GA	KZ	WC	EC	FS	MP	NW	LI	NC	
	Motorised Vehicles									
Motorcars	2,12	2,30	1,83	2,51	1,57	2,59	2,00	3,27	1,40	2,16
Minibuses	3,31	3,63	3,59	4,89	2,30	4,70	4,04	5,82	6,27	3,85
Buses	-2,38	1,06	1,22	4,95	4,79	3,91	0,17	2,29	2,94	0,89
Motorcycles	-0,81	-1,77	0,34	-0,89	-2,37	-2,35	-2,87	-1,62	-2,82	-0,93
LDV's - Bakkies	2,01	2,24	2,00	1,72	1,05	2,22	1,61	2,93	1,40	2,03
Trucks	1,28	2,35	4,36	0,56	0,41	-3,28	-1,62	2,09	-1,67	0,96
Other & Unknown	0,41	-0,97	1,38	1,21	-1,66	-0,57	-3,36	0,56	0,88	-0,31
Sub-Total	1,97	2,17	1,88	2,20	1,07	1,97	1,49	3,04	1,24	1,98
	Towed Vehicles									
Caravans	-2,38	-2,15	1,32	-0,37	-2,50	-1,59	-1,74	-0,24	-0,04	-1,30
Heavy Trailers	4,26	2,86	12,62	3,18	3,75	-0,29	0,22	6,51	-0,59	3,76
Light Trailers	0,79	0,40	2,09	1,24	0,15	1,62	0,77	2,22	1,81	1,12
Unknown	-3,90	-3,14	-1,11	-0,49	-2,83	-3,29	-4,05	-2,30	0,22	-2,61
Sub-Total	0,98	0,70	3,21	1,28	0,59	0,61	0,33	2,59	1,29	1,31
All Vehicles	1,88	2,07	2,00	2,12	1,00	1,79	1,35	3,00	1,25	1,91



APPENDIX B-1

Number of Un-Roadworthy Vehicles										
Dec 2018	GA	KZ	WC	EC	FS	MP	NW	LI	NC	RSA
Motorised Vehicles										
Motorcars	139 775	30 631	40 681	14 571	13 797	15 146	11 676	9 230	3 552	279 059
Minibuses	19 102	5 551	3 004	2 397	1 639	2 393	2 214	2 239	526	39 065
Buses	3 147	839	697	495	340	814	482	609	311	7 734
Motorcycles	17 107	3 466	6 286	1 684	2 045	2 973	1 769	1 269	782	37 381
LDV's - Bakkies	39 015	11 363	9 859	5 789	4 662	6 937	4 844	5 563	1 761	89 793
Trucks	19 386	6 101	4 408	2 969	3 915	5 565	2 776	3 413	1 806	50 339
Other & Unkwn	2 956	2 267	1 956	1 310	3 485	2 894	2 017	1 921	756	19 562
Sub-Total	240 488	60 218	66 891	29 215	29 883	36 722	25 778	24 244	9 494	522 933
Towed Vehicles										
Caravans	1 349	318	592	144	348	441	250	224	120	3 786
Heavy Trailers	6 919	2 615	1 984	816	2 411	4 117	1 233	956	736	21 787
Light Trailers	9 529	3 129	4 296	1 450	2 375	2 202	1 747	1 324	706	26 758
Unknown	131	143	80	90	111	132	119	63	40	909
Sub-Total	17 928	6 205	6 952	2 500	5 245	6 892	3 349	2 567	1 602	53 240
All Vehicles	258 416	66 423	73 843	31 715	35 128	43 614	29 127	26 811	11 096	576 173
Dec 2019	GA	KZ	WC	EC	FS	MP	NW	LI	NC	RSA
Motorised Vehicles										
Motorcars	147 346	31 627	37 364	15 400	14 030	14 835	12 079	9 376	3 468	285 525
Minibuses	20 079	5 892	3 276	2 742	1 765	2 525	2 397	2 342	559	41 577
Buses	3 222	948	717	509	396	870	487	641	284	8 074
Motorcycles	17 025	3 436	6 441	1 686	2 036	2 897	1 754	1 248	783	37 306
LDV's - Bakkies	40 550	11 766	9 820	6 224	4 745	7 101	4 907	5 773	1 770	92 656
Trucks	20 426	6 648	4 478	3 041	3 822	5 477	2 715	3 495	1 746	51 848
Other & Unkwn	3 049	2 361	2 068	1 417	3 586	2 947	2 083	2 072	744	20 327
Sub-Total	251 697	62 678	64 164	31 019	30 380	36 652	26 422	24 947	9 354	537 313
Towed Vehicles										
Caravans	1 422	319	610	144	325	422	240	205	114	3 801
Heavy Trailers	7 814	2 704	2 163	800	2 396	3 668	1 203	978	738	22 464
Light Trailers	10 123	3 244	4 567	1 513	2 492	2 273	1 873	1 376	749	28 210
Unknown	112	142	88	91	104	124	114	52	40	867
Sub-Total	19 471	6 409	7 428	2 548	5 317	6 487	3 430	2 611	1 641	55 342
All Vehicles	271 168	69 087	71 592	33 567	35 697	43 139	29 852	27 558	10 995	592 655
% Change	GA	KZ	WC	EC	FS	MP	NW	LI	NC	RSA
Motorised Vehicles										
Motorcars	5,42	3,25	-8,15	5,69	1,69	-2,05	3,45	1,58	-2,36	2,32
Minibuses	5,11	6,14	9,05	14,39	7,69	5,52	8,27	4,60	6,27	6,43
Buses	2,38	12,99	2,87	2,83	16,47	6,88	1,04	5,25	-8,68	4,40
Motorcycles	-0,48	-0,87	2,47	0,12	-0,44	-2,56	-0,85	-1,65	0,13	-0,20
LDV's - Bakkies	3,93	3,55	-0,40	7,51	1,78	2,36	1,30	3,77	0,51	3,19
Trucks	5,36	8,97	1,59	2,43	-2,38	-1,58	-2,20	2,40	-3,32	3,00
Other & Unkwn	3,15	4,15	5,73	8,17	2,90	1,83	3,27	7,86	-1,59	3,91
Sub-Total	4,66	4,09	-4,08	6,17	1,66	-0,19	2,50	2,90	-1,47	2,75
Towed Vehicles										
Caravans	5,41	0,31	3,04	0,00	-6,61	-4,31	-4,00	-8,48	-5,00	0,40
Heavy Trailers	12,94	3,40	9,02	-1,96	-0,62	-10,91	-2,43	2,30	0,27	3,11
Light Trailers	6,23	3,68	6,31	4,34	4,93	3,22	7,21	3,93	6,09	5,43
Unknown	-14,50	-0,70	10,00	1,11	-6,31	-6,06	-4,20	-17,46	0,00	-4,62
Sub-Total	8,61	3,29	6,85	1,92	1,37	-5,88	2,42	1,71	2,43	3,95
All Vehicles	4,93	4,01	-3,05	5,84	1,62	-1,09	2,49	2,79	-0,91	2,86

APPENDIX B-2

Number of Un-Licensed Vehicles										
Dec 2018	GA	KZ	WC	EC	FS	MP	NW	LI	NC	RSA
Motorised Vehicles										
Motorcars	131 227	41 325	42 637	23 806	14 297	21 129	16 304	17 519	6 012	314 256
Minibuses	7 817	2 188	1 306	1 231	522	963	1 010	1 013	245	16 295
Buses	579	145	103	148	71	202	173	144	84	1 649
Motorcycles	11 332	2 646	5 055	1 727	1 329	1 521	1 164	864	591	26 229
LDV's - Bakkies	30 674	14 377	8 792	10 037	4 734	9 172	6 611	10 852	2 813	98 062
Trucks	4 040	1 476	799	840	626	1 799	754	1 241	308	11 883
Other & Unkwn	1 366	1 413	900	827	1 344	1 238	1 147	907	362	9 504
Sub-Total	187 035	63 570	59 592	38 616	22 923	36 024	27 163	32 540	10 415	477 878
Towed Vehicles										
Caravans	1 497	315	534	214	296	361	279	269	128	3 893
Heavy Trailers	1 033	419	217	136	275	691	288	258	107	3 424
Light Trailers	18 576	5 272	5 615	3 386	2 982	3 327	3 103	2 600	1 309	46 170
Unknown	233	187	144	134	155	149	250	116	62	1 430
Sub-Total	21 339	6 193	6 510	3 870	3 708	4 528	3 920	3 243	1 606	54 917
All Vehicles	208 374	69 763	66 102	42 486	26 631	40 552	31 083	35 783	12 021	532 795
Dec 2019	GA	KZ	WC	EC	FS	MP	NW	LI	NC	RSA
Motorised Vehicles										
Motorcars	126 480	37 033	35 359	21 496	12 975	21 484	14 762	17 612	5 428	292 629
Minibuses	7 633	2 186	1 216	1 124	547	994	926	1 051	225	15 902
Buses	551	206	93	126	74	231	177	192	60	1 710
Motorcycles	9 877	2 007	3 942	1 203	993	1 380	877	728	455	21 462
LDV's - Bakkies	30 148	13 534	7 366	9 166	3 971	9 212	5 930	11 032	2 339	92 698
Trucks	3 894	1 419	741	713	531	2 015	636	1 235	257	11 441
Other & Unkwn	1 232	1 126	614	556	871	1 076	796	804	197	7 272
Sub-Total	179 815	57 511	49 331	34 384	19 962	36 392	24 104	32 654	8 961	443 114
Towed Vehicles										
Caravans	1 303	212	305	141	237	334	223	237	79	3 071
Heavy Trailers	1 228	498	313	115	178	895	252	239	91	3 809
Light Trailers	16 492	3 974	3 842	2 204	2 138	2 902	2 228	2 281	929	36 990
Unknown	194	120	79	90	117	147	177	57	40	1 021
Sub-Total	19 217	4 804	4 539	2 550	2 670	4 278	2 880	2 814	1 139	44 891
All Vehicles	199 032	62 315	53 870	36 934	22 632	40 670	26 984	35 468	10 100	488 005
% Change	GA	KZ	WC	EC	FS	MP	NW	LI	NC	RSA
Motorised Vehicles										
Motorcars	-3,62	-10,39	-17,07	-9,70	-9,25	1,68	-9,46	0,53	-9,71	-6,88
Minibuses	-2,35	-0,09	-6,89	-8,69	4,79	3,22	-8,32	3,75	-8,16	-2,41
Buses	-4,84	42,07	-9,71	-14,86	4,23	14,36	2,31	33,33	-28,57	3,70
Motorcycles	-12,84	-24,15	-22,02	-30,34	-25,28	-9,27	-24,66	-15,74	-23,01	-18,17
LDV's - Bakkies	-1,71	-5,86	-16,22	-8,68	-16,12	0,44	-10,30	1,66	-16,85	-5,47
Trucks	-3,61	-3,86	-7,26	-15,12	-15,18	12,01	-15,65	-0,48	-16,56	-3,72
Other & Unkwn	-9,81	-20,31	-31,78	-32,77	-35,19	-13,09	-30,60	-11,36	-45,58	-23,48
Sub-Total	-3,86	-9,53	-17,22	-10,96	-12,92	1,02	-11,26	0,35	-13,96	-7,27
Towed Vehicles										
Caravans	-12,96	-32,70	-42,88	-34,11	-19,93	-7,48	-20,07	-11,90	-38,28	-21,11
Heavy Trailers	18,88	18,85	44,24	-15,44	-35,27	29,52	-12,50	-7,36	-14,95	11,24
Light Trailers	-11,22	-24,62	-31,58	-34,91	-28,30	-12,77	-28,20	-12,27	-29,03	-19,88
Unknown	-16,74	-35,83	-45,14	-32,84	-24,52	-1,34	-29,20	-50,86	-35,48	-28,60
Sub-Total	-9,94	-22,43	-30,28	-34,11	-27,99	-5,52	-26,53	-13,23	-29,08	-18,26
All Vehicles	-4,48	-10,68	-18,50	-13,07	-15,02	0,29	-13,19	-0,88	-15,98	-8,41



APPENDIX B-3

Number of Both Un-Roadworthy & Un-Licensed Vehicles										
Dec 2018	GA	KZ	WC	EC	FS	MP	NW	LI	NC	RSA
Motorised Vehicles										
Motorcars	12 101	3 913	4 878	2 717	2 165	2 581	1 610	1 905	693	32 563
Minibuses	2 161	643	344	296	190	272	283	302	60	4 551
Buses	151	44	49	40	21	52	45	49	37	488
Motorcycles	2 155	523	782	246	228	378	265	178	108	4 863
LDV's - Bakkies	3 037	1 443	1 112	1 026	605	1 094	611	1 061	255	10 244
Trucks	970	360	267	203	282	452	239	323	144	3 240
Other & Unkwn	227	185	79	87	184	195	150	137	56	1 300
Sub-Total	20 802	7 111	7 511	4 615	3 675	5 024	3 203	3 955	1 353	57 249
Towed Vehicles										
Caravans	119	35	47	20	34	36	34	29	14	368
Heavy Trailers	187	86	46	34	63	156	67	43	31	713
Light Trailers	1 028	350	382	189	216	224	172	175	54	2 790
Unknown	7	17	9	5	7	5	15	6	7	78
Sub-Total	1 341	488	484	248	320	421	288	253	106	3 949
All Vehicles	22 143	7 599	7 995	4 863	3 995	5 445	3 491	4 208	1 459	61 198
Dec 2019	GA	KZ	WC	EC	FS	MP	NW	LI	NC	RSA
Motorised Vehicles										
Motorcars	12 546	3 874	4 632	2 822	2 091	2 683	1 610	1 933	674	32 865
Minibuses	2 342	613	339	294	182	316	304	288	65	4 743
Buses	173	66	41	43	27	67	44	37	22	520
Motorcycles	1 966	434	674	229	202	353	217	161	81	4 317
LDV's - Bakkies	3 200	1 374	1 072	1 055	496	1 156	579	1 037	249	10 218
Trucks	974	371	248	184	210	506	201	349	105	3 148
Other & Unkwn	199	150	80	79	181	151	136	106	33	1 115
Sub-Total	21 400	6 882	7 086	4 706	3 389	5 232	3 091	3 911	1 229	56 926
Towed Vehicles										
Caravans	101	24	38	12	27	34	23	29	10	298
Heavy Trailers	256	99	92	23	47	199	63	63	34	876
Light Trailers	1 081	285	324	131	185	226	162	139	56	2 589
Unknown	14	12	3	8	8	12	11	4	5	77
Sub-Total	1 452	420	457	174	267	471	259	235	105	3 840
All Vehicles	22 852	7 302	7 543	4 880	3 656	5 703	3 350	4 146	1 334	60 766
% Change	GA	KZ	WC	EC	FS	MP	NW	LI	NC	RSA
Motorised Vehicles										
Motorcars	3,68	-1,00	-5,04	3,86	-3,42	3,95	0,00	1,47	-2,74	0,93
Minibuses	8,38	-4,67	-1,45	-0,68	-4,21	16,18	7,42	-4,64	8,33	4,22
Buses	14,57	50,00	-16,33	7,50	28,57	28,85	-2,22	-24,49	-40,54	6,56
Motorcycles	-8,77	-17,02	-13,81	-6,91	-11,40	-6,61	-18,11	-9,55	-25,00	-11,23
LDV's - Bakkies	5,37	-4,78	-3,60	2,83	-18,02	5,67	-5,24	-2,26	-2,35	-0,25
Trucks	0,41	3,06	-7,12	-9,36	-25,53	11,95	-15,90	8,05	-27,08	-2,84
Other & Unkwn	-12,33	-18,92	1,27	-9,20	-1,63	-22,56	-9,33	-22,63	-41,07	-14,23
Sub-Total	2,87	-3,22	-5,66	1,97	-7,78	4,14	-3,50	-1,11	-9,16	-0,56
Towed Vehicles										
Caravans	-15,13	-31,43	-19,15	-40,00	-20,59	-5,56	-32,35	0,00	-28,57	-19,02
Heavy Trailers	36,90	15,12	100,00	-32,35	-25,40	27,56	-5,97	46,51	9,68	22,86
Light Trailers	5,16	-18,57	-15,18	-30,69	-14,35	0,89	-5,81	-20,57	3,70	-7,20
Unknown	100,00	-29,41	-66,67	60,00	14,29	140,00	-26,67	-33,33	-28,57	-1,28
Sub-Total	8,28	-13,93	-5,58	-29,84	-16,56	11,88	-10,07	-7,11	-0,94	-2,76
All Vehicles	3,20	-3,91	-5,65	0,35	-8,49	4,74	-4,04	-1,47	-8,57	-0,71

APPENDIX C-1

Dec 2018										
Number of Learners Licences Issued per Province										
Category	GA	KZ	WC	EC	FS	MP	NW	LI	NC	RSA
1	13 286	3 413	12 504	2 515	2 132	2 088	1 461	1 318	971	39 688
2	63 263	30 769	79 343	24 514	14 283	8 246	8 544	4 932	4 808	238 702
3	255 137	156 573	89 151	72 545	51 432	94 631	50 803	99 586	23 540	893 398
Total	331 686	190 755	180 998	99 574	67 847	104 965	60 808	105 836	29 319	1 171 788
Dec 2019										
Number of Learners Licences Issued per Province										
Category	GA	KZ	WC	EC	FS	MP	NW	LI	NC	RSA
1	13 317	3 524	11 543	2 323	2 155	2 253	1 544	1 397	915	38 971
2	64 070	30 036	75 318	24 116	13 549	7 711	7 911	4 221	4 820	231 752
3	272 607	156 125	86 784	73 780	49 853	95 521	51 678	90 595	22 363	899 306
Total	349 994	189 685	173 645	100 219	65 557	105 485	61 133	96 213	28 098	1 170 029
% Change										
Number of Learners Licences Issued per Province										
Category	GA	KZ	WC	EC	FS	MP	NW	LI	NC	RSA
1	0,23	3,25	-7,69	-7,63	1,08	7,90	5,68	5,99	-5,77	-1,81
2	1,28	-2,38	-5,07	-1,62	-5,14	-6,49	-7,41	-14,42	0,25	-2,91
3	6,85	-0,29	-2,66	1,70	-3,07	0,94	1,72	-9,03	-5,00	0,66
Total	5,52	-0,56	-4,06	0,65	-3,38	0,50	0,53	-9,09	-4,16	-0,15

Learner Licences :

Category 1 : Motorcycle

Category 2 : Light Motor Vehicle

Category 3 : Heavy Motor Vehicle

APPENDIX C-2

Dec 2018										
Number of Driving Licences Issued per Province										
Category	GA	KZ	WC	EC	FS	MP	NW	LI	NC	RSA
A	177 092	61 516	117 430	34 985	26 427	23 185	19 932	15 307	9 544	485 418
A1	43 602	13 008	28 904	9 168	8 883	6 548	6 299	3 823	2 407	122 642
B	1 081 943	475 840	619 416	243 678	148 593	124 584	118 545	77 656	53 506	2 943 761
C	4 797	4 923	5 099	1 185	536	2 992	1 710	1 841	468	23 551
C1	1 407 298	708 543	228 071	232 779	173 456	475 570	238 978	629 691	74 493	4 168 879
EB	1 285 447	575 785	812 724	313 126	175 579	159 055	140 814	109 147	65 179	3 636 856
EC	315 101	185 544	125 909	75 138	82 981	118 166	57 341	101 606	26 017	1 087 803
EC1	218 699	69 676	50 250	46 381	35 097	52 099	36 941	65 859	11 405	586 407
Total	4 533 979	2 094 835	1 987 803	956 440	651 552	962 199	620 560	1 004 930	243 019	13 055 317
Dec 2019										
Number of Driving Licences Issued per Province										
Category	GA	KZ	WC	EC	FS	MP	NW	LI	NC	RSA
A	179 516	62 114	120 324	35 460	26 547	23 399	20 034	15 532	9 619	492 545
A1	43 465	13 018	29 172	9 181	8 815	6 514	6 249	3 806	2 379	122 599
B	1 130 709	489 702	645 568	253 301	153 930	127 219	121 414	79 405	55 287	3 056 535
C	4 915	4 941	5 400	1 227	543	3 130	1 710	1 841	487	24 194
C1	1 528 345	765 129	245 315	254 146	184 467	513 321	255 556	667 894	80 434	4 494 607
EB	1 285 177	575 705	818 459	313 973	175 131	158 244	140 190	109 116	65 028	3 641 023
EC	328 483	193 968	129 765	77 522	85 178	124 548	58 695	105 866	26 533	1 130 558
EC1	217 935	69 554	50 143	46 483	34 954	52 029	36 505	65 998	11 399	585 000
Total	4 718 545	2 174 131	2 044 146	991 293	669 565	1 008 404	640 353	1 049 458	251 166	13 547 061
% Change										
Number of Driving Licences Issued per Province										
Category	GA	KZ	WC	EC	FS	MP	NW	LI	NC	RSA
A	1,37	0,97	2,46	1,36	0,45	0,92	0,51	1,47	0,79	1,47
A1	-0,31	0,08	0,93	0,14	-0,77	-0,52	-0,79	-0,44	-1,16	-0,04
B	4,51	2,91	4,22	3,95	3,59	2,12	2,42	2,25	3,33	3,83
C	2,46	0,37	5,90	3,54	1,31	4,61	0,00	0,00	4,06	2,73
C1	8,60	7,99	7,56	9,18	6,35	7,94	6,94	6,07	7,98	7,81
EB	-0,02	-0,01	0,71	0,27	-0,26	-0,51	-0,44	-0,03	-0,23	0,11
EC	4,25	4,54	3,06	3,17	2,65	5,40	2,36	4,19	1,98	3,93
EC1	-0,35	-0,18	-0,21	0,22	-0,41	-0,13	-1,18	0,21	-0,05	-0,24
Total	4,07	3,79	2,83	3,64	2,76	4,80	3,19	4,43	3,35	3,77

Driving Licences:

A	Motorcycle > 125 cub.cm	A1	Motorcycle < 125 cub.cm	B	Motor vehicle < 3,5000 kg
C	Motorvehicle > 16,000 kg	C1	Motor vehicle 3,500 – 16,000 kg	EB	Articulated motor vehicle <16,000 kg
		EC	Articulated vehicle > 16,000 kg	EC1	Articulated vehicle 3,500 – 16,000 kg

APPENDIX C-3

Dec 2018										
Number of Professional Driving Permits (PrDP's) Issued per Province										
Category	GA	KZ	WC	EC	FS	MP	NW	LI	NC	RSA
G	1 531	1 698	1 482	692	798	886	369	738	333	8 527
P G	273 357	180 357	148 008	84 967	62 730	100 111	51 544	104 919	24 063	1 030 056
D G	33	10	19	16	22	10	10	44	2	166
D P G	14 045	10 871	4 355	2 377	3 125	3 524	1 285	1 969	751	42 302
Total	288 966	192 936	153 864	88 052	66 675	104 531	53 208	107 670	25 149	1 081 051
Dec 2019										
Category	GA	KZ	WC	EC	FS	MP	NW	LI	NC	RSA
G	1 475	1 487	1 393	668	798	763	377	677	342	7 980
P G	284 725	185 606	155 226	89 884	63 604	104 330	52 646	106 455	24 719	1 067 195
D G	20	10	15	15	15	5	16	31	4	131
D P G	14 926	11 387	4 606	2 548	3 203	3 774	1 294	2 047	769	44 554
Total	301 146	198 490	161 240	93 115	67 620	108 872	54 333	109 210	25 834	1 119 860
% Change										
Category	GA	KZ	WC	EC	FS	MP	NW	LI	NC	RSA
G	-3,66	-12,43	-6,01	-3,47	0,00	-13,88	2,17	-8,27	2,70	-6,41
P G	4,16	2,91	4,88	5,79	1,39	4,21	2,14	1,46	2,73	3,61
D G	-39,39	0,00	-21,05	-6,25	-31,82	-50,00	60,00	-29,55	100,00	-21,08
D P G	6,27	4,75	5,76	7,19	2,50	7,09	0,70	3,96	2,40	5,32
Total	4,22	2,88	4,79	5,75	1,42	4,15	2,11	1,43	2,72	3,59

Professional Driving Permits (PrDPs)

G : Goods

P : Passengers

D : Dangerous goods



Road Traffic
Management Corporation

Road Traffic Management Corporation
Eco Origin Office Park, Block F
349 Witch-Hazel Street
Highveld Ext 79
Tell: 012 999 5200

Want to know more about the RTMC - visit www.rtmc.co.za